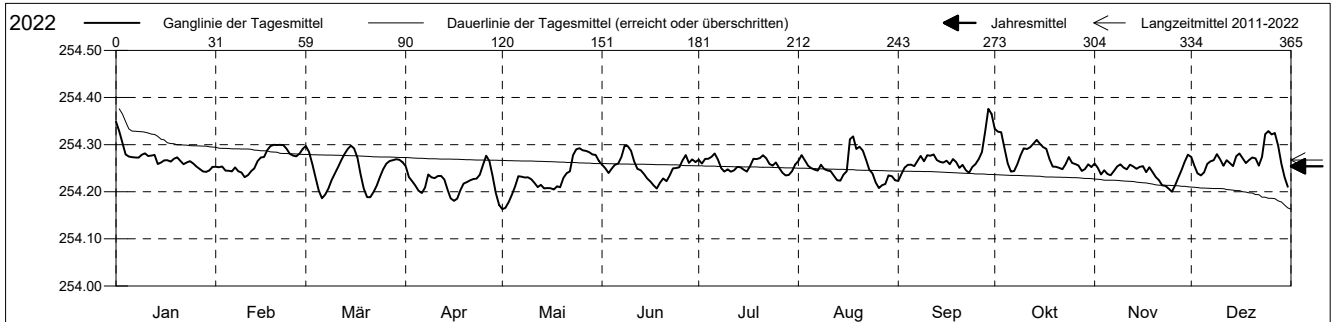


Grundwasserstände

Birstal
 Birsfelden 17.J.8 Swissterminal
 Abstichpunkt: 0.00 m ü.M.
 OK Terrain: 0.00 m ü.M.

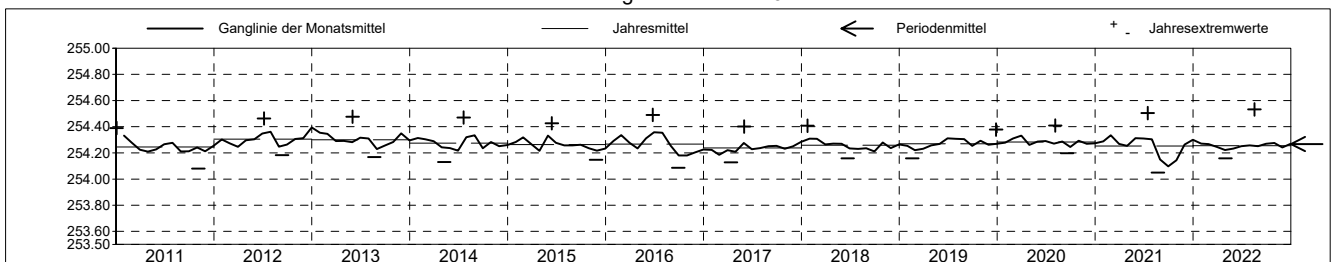
Amt für Umweltschutz und Energie
Kanton Basel-Landschaft
 Koordinaten: 0.00 / 0.00

2022	Januar	Februar	März	April	Mai	Juni	Juli	August	September	Oktober	November	Dezember	
1	254.35 +	254.25	254.30 +	254.25	254.16 -	254.26	254.27	254.27	254.22 -	254.33 +	254.26	254.27	1
2	254.33	254.25	254.28	254.23	254.17	254.25	254.26	254.28	254.24	254.33 +	254.25	254.26	2
3	254.30	254.25	254.26	254.22	254.18	254.24	254.27	254.27	254.25	254.33 +	254.24	254.24	3
4	254.28	254.25	254.23	254.21	254.19	254.25	254.27	254.25	254.26	254.29	254.25	254.23	4
5	254.27	254.24	254.20	254.20	254.21	254.26	254.27	254.25	254.26	254.26	254.24	254.24	5
Tagesmittel													
6	254.27	254.24	254.19 -	254.20	254.23	254.26	254.28 +	254.25	254.25	254.24 -	254.24	254.26	6
7	254.27	254.25	254.19 -	254.21	254.23	254.27	254.27	254.24	254.27	254.24 -	254.24	254.26	7
8	254.27	254.24	254.21	254.24	254.23	254.30 +	254.25	254.26	254.28	254.26	254.25	254.27	8
9	254.28	254.24	254.22	254.23	254.23	254.30 +	254.24	254.25	254.26	254.28	254.26	254.28	9
10	254.28	254.23 -	254.24	254.23	254.23	254.29	254.25	254.25	254.28	254.29	254.25	254.27	10
11	254.28	254.24	254.25	254.23	254.22	254.26	254.24	254.24	254.28	254.29	254.25	254.26	11
12	254.28	254.24	254.27	254.23	254.21	254.25	254.25	254.23	254.28	254.29	254.26	254.27	12
13	254.28	254.25	254.28	254.23	254.21	254.25	254.25	254.22	254.27	254.30	254.25	254.26	13
14	254.26	254.27	254.29	254.20	254.21	254.24	254.25	254.22	254.26	254.31	254.25	254.25	14
15	254.26	254.27	254.30 +	254.19	254.21	254.23	254.25	254.24	254.26	254.30	254.25	254.28	15
Max. +													
16	254.27	254.27	254.29	254.18	254.21	254.22	254.24	254.24	254.27	254.29	254.25	254.28	16
17	254.27	254.29	254.27	254.19	254.20	254.21 -	254.25	254.31	254.26	254.29	254.24	254.27	17
18	254.26	254.30 +	254.24	254.20	254.21	254.21 -	254.27	254.32 +	254.27	254.27	254.25	254.26	18
19	254.27	254.30 +	254.21	254.22	254.21	254.22	254.27	254.29	254.26	254.25	254.24	254.27	19
20	254.27	254.30 +	254.19 -	254.22	254.23	254.23	254.27	254.30	254.25	254.25	254.23	254.27	20
Min. -													
21	254.27	254.30 +	254.19 -	254.22	254.24	254.22	254.28 +	254.29	254.26	254.25	254.22	254.27	21
22	254.26	254.30 +	254.20	254.23	254.24	254.23	254.27	254.27	254.25	254.25	254.21	254.26	22
23	254.26	254.29	254.21	254.23	254.28	254.25	254.26	254.25	254.24	254.26	254.21	254.27	23
24	254.27	254.28	254.23	254.24	254.29 +	254.25	254.26	254.24	254.25	254.27	254.21	254.32	24
25	254.26	254.28	254.25	254.26	254.29 +	254.25	254.26	254.22	254.26	254.26	254.20 -	254.33 +	25
26	254.25	254.27	254.26	254.28 +	254.29 +	254.27	254.25	254.21 -	254.27	254.26	254.21	254.32	26
27	254.25	254.28	254.27	254.27	254.29 +	254.28	254.24	254.21 -	254.28	254.26	254.23	254.32	27
28	254.24 -	254.29	254.27	254.23	254.28	254.26	254.23 -	254.22	254.33	254.24 -	254.25	254.30	28
29	254.24 -		254.27	254.20	254.28	254.27	254.24	254.23	254.38 +	254.25	254.26	254.26	29
30	254.25		254.27	254.17 -	254.28	254.26	254.24	254.23	254.36	254.26	254.28 +	254.23	30
31	254.25		254.26		254.27		254.26	254.22		254.25		254.21 -	31
Monatsmittel	254.27 +	254.27 +	254.24	254.22 -	254.23	254.25	254.26	254.25	254.27 +	254.27 +	254.24	254.27 +	
Maximum	254.36	254.30	254.30	254.29	254.30	254.30	254.29	254.53 +	254.39	254.36	254.28 -	254.34	
Datum	01.01	19.02	01.03	26.04	23.05	08.06	06.07	17.08	29.09	01.10	30.11	24.12	
Amplitude	0.12	0.08	0.12	0.12	0.14	0.11	0.06	0.33	0.18	0.12	0.09	0.14	
Jahr 2022	Mittel	254.25 m ü.M.	Maximum	254.53 (17.Aug)	Minimum	254.16 (01.Mai)	Amplitude	0.37 m					



Periode	2011 - 2022												
Monatsmittel	254.29 +	254.29 +	254.26	254.25	254.28	254.28	254.29 +	254.25	254.23 -	254.25	254.26	254.28	
Maximum	254.42	254.41	254.37 -	254.38	254.42	254.49	254.50	254.53 +	254.39	254.40	254.43	254.44	
Jahr	2021	2013	2020	2012	2013	2016	2021	2022	2022	2012	2012	2012	
Minimum	254.15	254.16	254.14	254.13	254.13	254.15	254.15	254.05 -	254.05 -	254.07	254.08	254.18 +	
Jahr	2017	2019	2017	2017	2014	2014	2017	2021	2021	2021	2011	2015	
Amplitude	0.18	0.15 -	0.15 -	0.18	0.20	0.26	0.34 +	0.33	0.18	0.22	0.21	0.16	
Jahr	2018	2019	2015	2013	2013	2015	2021	2022	2020	2018	2011	2019	
Periode	Mittel	254.27 m ü.M.	Maximum	254.53 (17.Aug 2022)	Minimum	254.05 (22.Aug 2021)	Amplitude	0.48 m					

Darstellung der letzten 12 Jahre

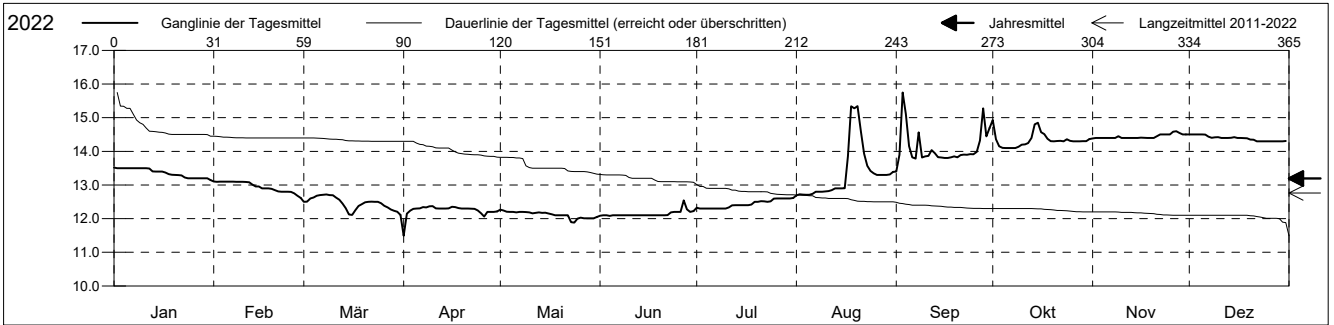


Grundwassertemperatur

Birstal
 Birsfelden 17.J.8 Swissterminal
 Abstichpunkt: 0.00 m ü.M.
 OK Terrain: 0.00 m ü.M.

Amt für Umweltschutz und Energie
Kanton Basel-Landschaft
 Koordinaten: 0.00 / 0.00

2022	Januar	Februar	März	April	Mai	Juni	Juli	August	September	Oktober	November	Dezember	
1	13.5 +	13.1 +	12.5	11.5 -	12.3 +	12.1 -	12.3 -	12.7 -	13.4 -	14.9 +	14.4 -	14.5 +	1
2	13.5 +	13.1 +	12.5	12.1	12.2	12.1 -	12.3 -	12.7 -	13.9	14.4	14.4 -	14.5 +	2
3	13.5 +	13.1 +	12.6	12.2	12.2	12.1 -	12.3 -	12.7 -	15.7 +	14.2	14.4 -	14.5 +	3
4	13.5 +	13.1 +	12.6	12.3	12.2	12.1 -	12.3 -	12.7 -	15.1	14.1 -	14.4 -	14.5 +	4
5	13.5 +	13.1 +	12.7 +	12.3	12.2	12.1 -	12.3 -	12.7 -	14.2	14.1 -	14.4 -	14.5 +	5
Tagesmittel													
6	13.5 +	13.1 +	12.7 +	12.3	12.2	12.1 -	12.3 -	12.7 -	13.8	14.1 -	14.4 -	14.5 +	6
7	13.5 +	13.1 +	12.7 +	12.3	12.2	12.1 -	12.3 -	12.8	13.8	14.1 -	14.4 -	14.4	7
8	13.5 +	13.1 +	12.7 +	12.3	12.2	12.1 -	12.3 -	12.8	14.6	14.1 -	14.4 -	14.4	8
9	13.5 +	13.1 +	12.7 +	12.4 +	12.2	12.1 -	12.3 -	12.8	13.8	14.1 -	14.4 -	14.4	9
10	13.5 +	13.1 +	12.7 +	12.4 +	12.2	12.1 -	12.3 -	12.8	13.9	14.2	14.4 -	14.4	10
11	13.5 +	13.1 +	12.6	12.3	12.2	12.1 -	12.3 -	12.8	13.9	14.2	14.4 -	14.4	11
12	13.5 +	13.1 +	12.6	12.3	12.2	12.1 -	12.4	12.9	14.0	14.2	14.4 -	14.4	12
13	13.4	13.0	12.4	12.3	12.2	12.1 -	12.4	12.9	13.9	14.4	14.4 -	14.4	13
14	13.4	13.0	12.3	12.3	12.2	12.1 -	12.4	12.9	13.8	14.8	14.4 -	14.4	14
15	13.4	13.0	12.1 -	12.3	12.2	12.1 -	12.4	12.9	13.8	14.9 +	14.4 -	14.4	15
Max. +													
16	13.4	12.9	12.1 -	12.4 +	12.2	12.1 -	12.4	12.9	13.8	14.6	14.4 -	14.4	16
17	13.4	12.9	12.3	12.3	12.1	12.1 -	12.4	13.9	13.8	14.5	14.4 -	14.4	17
18	13.3	12.9	12.4	12.3	12.1	12.1 -	12.4	15.3 +	13.8	14.4	14.4 -	14.4	18
19	13.3	12.9	12.4	12.3	12.1	12.1 -	12.5	15.3 +	13.9	14.3	14.4 -	14.4	19
20	13.3	12.9	12.5	12.3	12.1	12.1 -	12.5	15.3 +	13.8	14.3	14.4 -	14.4	20
Min. -													
21	13.3	12.8	12.5	12.3	12.1	12.1 -	12.5	14.6	13.9	14.3	14.4 -	14.3	21
22	13.3	12.8	12.5	12.3	12.1	12.1 -	12.5	13.9	13.9	14.3	14.5	14.3 -	22
23	13.2	12.8	12.5	12.3	11.9 -	12.2	12.5	13.6	13.9	14.3	14.5	14.3 -	23
24	13.2	12.8	12.5	12.2	11.9 -	12.2	12.5	13.4	13.9	14.4	14.5	14.3 -	24
25	13.2	12.8	12.5	12.2	12.0	12.2	12.6 +	13.3	13.9	14.3	14.5	14.3 -	25
26	13.2	12.8	12.4	12.1	12.0	12.2	12.6 +	13.3	14.0	14.3	14.6 +	14.3 -	26
27	13.2	12.7	12.3	12.2	12.0	12.5 +	12.6 +	13.3	14.3	14.3	14.6 +	14.3 -	27
28	13.2	12.6 -	12.3	12.2	12.0	12.3	12.6 +	13.3	15.3	14.3	14.5	14.3 -	28
29	13.2		12.2	12.2	12.0	12.2	12.6 +	13.3	14.4	14.3	14.5	14.3 -	29
30	13.2		12.2	12.2	12.0	12.2	12.6 +	13.3	14.7	14.3	14.5	14.3 -	30
31	13.1 -		12.1 -		12.1		12.6 +	13.4		14.4		14.3 -	31
Monatsmittel	13.4	12.9	12.5	12.2	12.1 -	12.1 -	12.4	13.3	14.1	14.3	14.4 +	14.4 +	
Maximum	13.6	13.2	12.8	12.4	12.3 -	12.7	12.7	16.3 +	16.0	15.3	14.8	14.5	
Datum	01.01	01.02	07.03	06.04	01.05	27.06	31.07	17.08	03.09	01.10	09.11	01.12	
Minimum	13.1	12.5	11.6	11.3 -	11.6	12.0	12.3	12.6	13.4	14.1	14.3 +	14.3 +	
Datum	31.01	28.02	31.03	01.04	23.05	01.06	01.07	01.08	01.09	03.10	01.11	18.12	
Amplitude	0.5	0.7	1.2	1.1	0.7	0.7	0.4	3.7	2.6	1.2	0.5	0.2	
Jahr 2022	Mittel	13.2 °C		Maximum	16.3 (17.Aug)		Minimum	11.3 (01.Apr)		Amplitude	5.0 °C		



Periode	2011 - 2022												
Monatsmittel	13.3	12.8	12.4	12.0	11.8 -	11.8 -	12.1	12.6	13.1	13.6	13.8 +	13.8 +	
Maximum	14.5	14.1	13.9	13.3	12.8 -	14.1	15.0	16.3 +	16.0	15.4	14.8	14.7	
Jahr	2019	2019	2019	2019	2019	2015	2016	2022	2022	2018	2022	2018	
Minimum	11.8	10.8	10.8	10.7	10.2 -	11.0	11.1	11.4	11.9	12.5	12.9 +	12.5	
Jahr	2014	2011	2014	2016	2013	2013	2013	2013	2013	2013	2013	2013	
Amplitude	1.4	1.4	1.2	1.4	1.2	2.5	3.3	3.7 +	2.6	1.6	0.8	0.6 -	
Jahr	2021	2016	2022	2012	2013	2015	2016	2016	2022	2014	2013	2013	
Periode	Mittel	12.8 °C		Maximum	16.3 (17.Aug 2022)		Minimum	10.2 (02.Mai 2013)		Amplitude	6.1 °C		

Darstellung der letzten 12 Jahre

