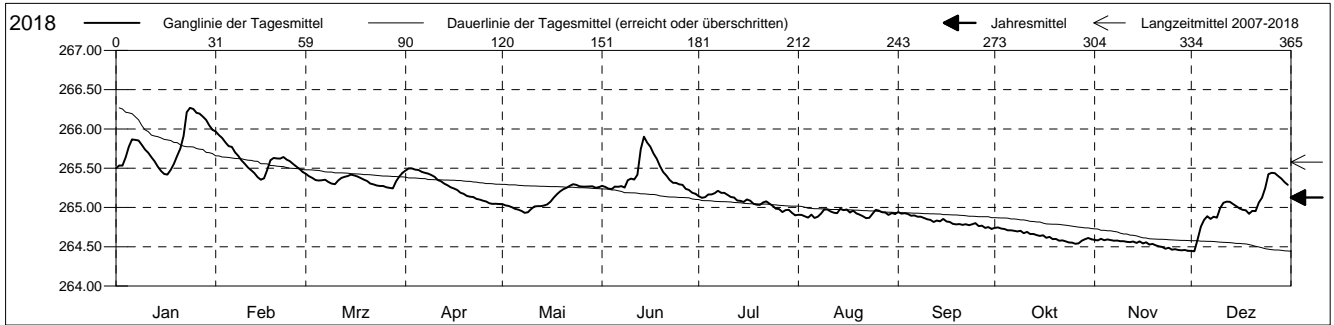


**Grundwasserstände**

Birstal  
 Münchenstein 20.K.4 Hofmatt  
 Abstichpunkt: 0.00 m ü.M.  
 OK Terrain: 0.00 m ü.M.

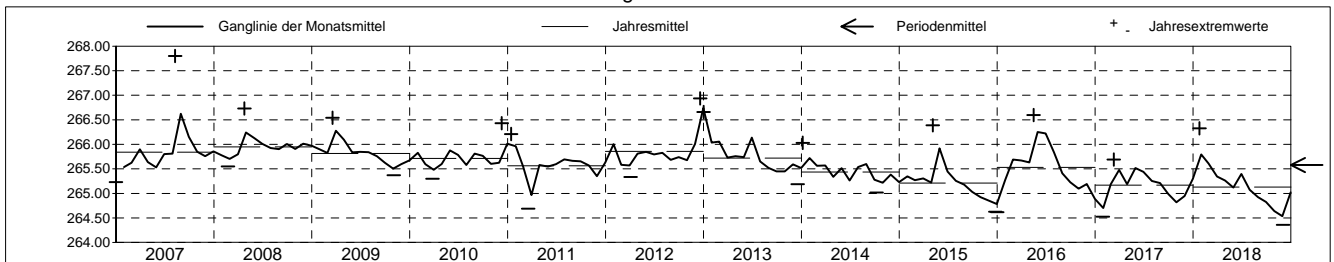
**Amt für Umweltschutz und Energie**  
**Kanton Basel-Landschaft**  
 Koordinaten: 0.00 / 0.00

2018	Januar	Februar	März	April	Mai	Juni	Juli	August	September	Oktober	November	Dezember	
1	265.50	265.97 +	265.43	265.47	265.04	265.28	265.14	264.91	264.94 +	264.74	264.59	264.45	1
2	265.53	265.92	265.40	265.50 +	265.03	265.26	265.12	264.90	264.92	264.75 +	264.58	264.44 -	2
3	265.53	265.88	265.37	265.50 +	265.02	265.24	265.13	264.89	264.93	264.73	264.60 +	264.59	3
4	265.64	265.83	265.35	265.48	265.00	265.24	265.16	264.87	264.92	264.73	264.58	264.76	4
5	265.77	265.78	265.34	265.48	264.98	265.27	265.17	264.91	264.90	264.71	264.59	264.84	5
Tagesmittel													
6	265.87	265.77	265.35	265.45	264.97	265.26	265.18	264.87	264.90	264.71	264.58	264.89	6
7	265.86	265.70	265.35	265.44	264.96	265.27	265.21 +	264.88	264.88	264.70	264.58	264.85	7
8	265.85	265.66	265.33	265.43	264.93 -	265.25	265.18	264.92	264.88	264.69	264.58	264.88	8
9	265.80	265.60	265.30	265.41	264.94	265.35	265.19	264.97	264.86	264.70	264.57	264.87	9
10	265.74	265.56	265.30	265.39	264.98	265.37	265.16	264.97	264.85	264.67	264.57	264.99	10
11	265.70	265.51	265.34	265.35	265.01	265.36	265.13	264.95	264.84	264.69	264.56	265.06	11
12	265.64	265.47	265.38	265.33	265.02	265.42	265.13	264.93	264.81	264.66	264.56	265.07	12
13	265.59	265.44	265.39	265.30	265.02	265.74	265.09	264.93	264.83	264.66	264.57	265.07	13
14	265.52	265.39	265.40	265.28	265.02	265.90 +	265.09	264.98 +	264.82	264.65	264.55	265.04	14
15	265.46	265.35 -	265.42	265.26	265.04	265.83	265.07	264.97	264.85	264.64	264.57	265.02	15
Max. +													
16	265.43	265.37	265.41	265.24	265.07	265.77	265.10	264.97	264.82	264.64	264.54	264.99	16
17	265.42 -	265.48	265.39	265.22	265.13	265.68	265.09	264.93	264.82	264.61	264.56	264.97	17
18	265.48	265.60	265.37	265.19	265.17	265.62	265.05	264.96	264.79	264.63	264.53	264.96	18
19	265.56	265.63	265.36	265.17	265.20	265.53	265.04	264.93	264.79	264.60	264.53	264.92	19
20	265.66	265.63	265.34	265.15	265.23	265.45	265.03	264.91	264.79	264.60	264.52	264.96	20
Min. -													
21	265.75	265.62	265.30	265.14	265.25	265.41	265.06	264.89	264.78	264.58	264.51	264.95	21
22	265.91	265.64	265.29	265.13	265.28	265.35	265.08	264.86 -	264.79	264.58	264.50	265.06	22
23	266.21	265.61	265.28	265.11	265.30 +	265.31	265.05	264.87	264.77	264.57	264.48	265.12	23
24	266.27 +	265.59	265.27	265.10	265.29	265.31	265.02	264.92	264.79	264.55	264.49	265.25	24
25	266.25	265.55	265.27	265.09	265.27	265.29	264.99	264.97	264.80	264.55	264.46	265.43	25
26	266.21	265.52	265.26	265.08	265.27	265.29	264.98	264.96	264.76	264.54 -	264.47	265.44 +	26
27	266.19	265.49	265.25	265.05	265.27	265.24	264.94	264.94	264.77	264.54 -	264.46	265.44 +	27
28	266.16	265.45	265.24 -	265.04 -	265.27	265.22	264.96	264.94	264.74	264.58	264.45 -	265.40	28
29	266.12		265.33	265.05	265.27	265.19	264.97	264.90	264.75	264.59	264.46	265.37	29
30	266.05		265.39	265.04 -	265.25	265.17 -	264.93	264.93	264.73 -	264.61	264.45 -	265.32	30
31	265.99		265.44 +		265.26		264.90 -	264.92		264.59		265.29	31
Monatsmittel	265.79 +	265.61	265.34	265.26	265.12	265.40	265.08	264.92	264.83	264.64	264.53 -	265.02	
Maximum	266.33 +	266.03	265.52	265.57	265.37	265.96	265.26	265.04	264.99	264.79	264.65 -	265.48	
Datum	24.01	01.02	31.03	03.04	23.05	13.06	07.07	14.08	01.09	02.10	03.11	26.12	
Amplitude	1.04	0.80	0.39	0.64	0.55	0.90	0.46	0.29	0.35	0.33	0.27	1.12	
Jahr 2018	Mittel	265.13 m ü.M.		Maximum	266.33 (24.Jan)		Minimum	264.36 (02.Dez)		Amplitude	1.97 m		



Periode	2007 - 2018												
Monatsmittel	265.66	265.60	265.59	265.61	265.74 +	265.73	265.61	265.61	265.48	265.35 -	265.40	265.55	
Maximum	266.66	266.49	266.54	266.73	266.60	266.55	266.36	267.80 +	266.71	266.25 -	266.76	266.94	
Jahr	2013	2013	2009	2008	2016	2016	2016	2007	2007	2008	2012	2012	
Minimum	264.52	264.69	264.69	264.93	264.82	265.04 +	264.80	264.75	264.64	264.46	264.38	264.36 -	
Jahr	2017	2017	2011	2018	2018	2014	2018	2018	2018	2018	2018	2018	
Amplitude	1.09	0.94	0.77	1.07	1.27	0.90	0.92	2.18 +	0.77	0.69 -	1.17	1.12	
Jahr	2016	2013	2011	2012	2015	2018	2016	2007	2007	2012	2012	2018	
Periode	Mittel	265.58 m ü.M.		Maximum	267.80 (09.Aug 2007)		Minimum	264.36 (02.Dez 2018)		Amplitude	3.44 m		

Darstellung der letzten 12 Jahre

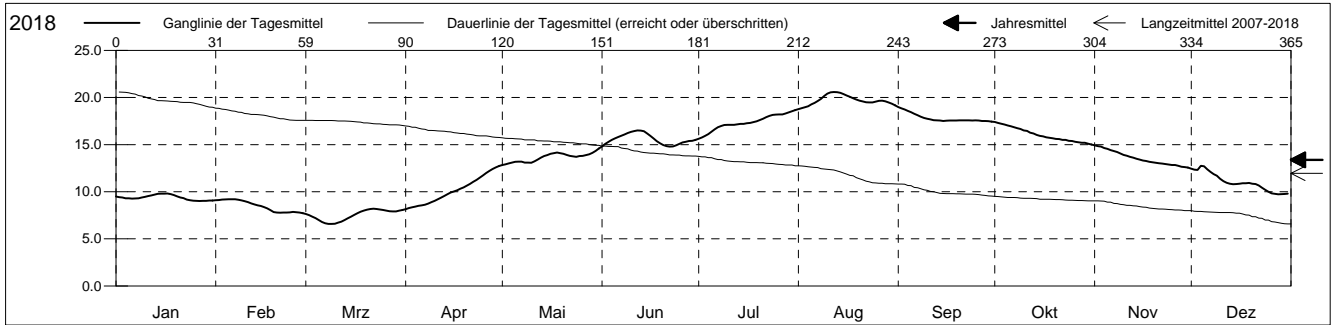


**Grundwassertemperatur**

Birstal  
 Münchenstein 20.K.4 Hofmatt  
 Abstichpunkt: 0.00 m ü.M.  
 OK Terrain: 0.00 m ü.M.

**Amt für Umweltschutz und Energie**  
**Kanton Basel-Landschaft**  
 Koordinaten: 0.00 / 0.00

2018	Januar	Februar	März	April	Mai	Juni	Juli	August	September	Oktober	November	Dezember	
1	9.5	9.1	7.6	8.2 -	12.8 -	14.8 -	15.6 -	18.8 -	19.0 +	17.4 +	14.9 +	12.5	1
2	9.4	9.1	7.5	8.3	12.9	15.1	15.8	18.9	18.9	17.3	14.8	12.4	2
3	9.4	9.2 +	7.4	8.4	13.0	15.3	15.9	19.0	18.7	17.2	14.8	12.3	3
4	9.3	9.2 +	7.2	8.4	13.1	15.5	16.1	19.1	18.6	17.1	14.6	12.7 +	4
5	9.3	9.2 +	7.0	8.5	13.2	15.7	16.4	19.3	18.5	17.0	14.5	12.7 +	5
Tagesmittel													
6	9.3	9.2 +	6.8	8.6	13.2	15.8	16.6	19.4	18.3	17.0	14.4	12.4	6
7	9.3	9.2 +	6.7	8.6	13.2	15.9	16.8	19.6	18.1	16.8	14.3	12.1	7
8	9.3	9.1	6.6 -	8.7	13.1	16.1	17.0	19.9	18.0	16.7	14.2	11.9	8
9	9.4	9.1	6.6 -	8.9	13.1	16.2	17.1	20.2	17.8	16.7	14.1	11.7	9
10	9.5	9.0	6.6 -	9.0	13.1	16.4	17.1	20.4	17.7	16.5	13.9	11.4	10
11	9.5	8.9	6.7	9.2	13.2	16.4	17.1	20.5	17.7	16.5	13.8	11.1	11
12	9.6	8.8	6.8	9.4	13.4	16.5 +	17.1	20.6 +	17.6	16.3	13.7	10.9	12
13	9.7	8.7	7.0	9.6	13.6	16.5 +	17.2	20.6 +	17.6	16.2	13.6	10.9	13
14	9.8 +	8.6	7.2	9.8	13.8	16.4	17.2	20.5	17.6	16.0	13.5	10.8	14
15	9.8 +	8.5	7.4	9.9	13.9	16.2	17.2	20.4	17.5	15.9	13.4	10.8	15
Max. +													
16	9.8 +	8.4	7.5	10.0	14.0	15.9	17.3	20.2	17.5	15.9	13.3	10.9	16
17	9.8 +	8.2	7.7	10.2	14.1	15.7	17.3	20.1	17.6	15.8	13.3	10.9	17
18	9.7	8.1	7.9	10.3	14.2	15.4	17.4	19.9	17.6	15.7	13.2	10.9	18
19	9.6	7.8	8.0	10.5	14.1	15.1	17.5	19.8	17.6	15.7	13.1	10.9	19
20	9.5	7.8	8.1	10.6	14.0	15.0	17.6	19.7	17.6	15.6	13.1	10.9	20
Min. -													
21	9.4	7.8	8.2 +	10.8	13.9	14.8 -	17.8	19.6	17.6	15.6	13.0	10.8	21
22	9.3	7.8	8.2 +	11.0	13.8	14.8 -	17.9	19.5	17.6	15.5	13.0	10.7	22
23	9.2	7.8	8.2 +	11.3	13.7	14.8 -	18.1	19.5	17.6	15.5	12.9	10.4	23
24	9.1	7.8	8.1	11.5	13.7	14.9	18.2	19.5	17.6	15.4	12.9	10.2	24
25	9.1	7.9	8.1	11.7	13.8	15.1	18.2	19.6	17.6	15.4	12.8	10.0	25
26	9.0 -	7.8	8.0	12.0	13.8	15.2	18.2	19.6	17.6	15.3	12.8	9.8	26
27	9.0 -	7.8	7.9	12.2	13.9	15.3	18.2	19.7	17.5	15.3	12.7	9.8	27
28	9.0 -	7.7 -	7.9	12.4	14.0	15.4	18.3	19.6	17.5	15.2	12.7	9.7 -	28
29	9.0 -		7.9	12.6	14.1	15.4	18.4	19.5	17.5	15.2	12.6 -	9.7 -	29
30	9.1		8.0	12.7 +	14.3	15.5	18.5	19.3	17.4 -	15.1	12.6 -	9.8	30
31	9.1		8.1		14.6 +		18.7 +	19.2		15.0 -		9.8	31
Monatsmittel	9.4	8.5	7.5 -	10.1	13.6	15.6	17.3	19.7 +	17.8	16.1	13.6	11.0	
Maximum	9.9	9.2	8.2 -	12.8	14.7	16.5	18.7	20.6 +	19.1	17.5	15.0	13.0	
Datum	17.01	01.02	21.03	30.04	31.05	11.06	31.07	11.08	01.09	01.10	01.11	04.12	
Minimum	9.0	7.7	6.5 -	8.1	12.8	14.7	15.5	18.7 +	17.3	15.0	12.5	9.7	
Datum	24.01	21.02	08.03	01.04	01.05	01.06	01.07	01.08	30.09	31.10	30.11	27.12	
Amplitude	0.9	1.5	1.7	4.7	1.9	1.8	3.2	1.9	1.8	2.5	2.5	3.3	
Jahr 2018	Mittel	13.4 °C		Maximum	20.6 (11.Aug)		Minimum	6.5 (08.Mrz)		Amplitude	14.1 °C		



Periode	2007 - 2018												
Monatsmittel	7.6	6.9 -	7.9	10.0	12.4	14.8	16.7	17.2 +	16.0	13.7	11.0	8.8	
Maximum	9.9	9.2 -	10.2	13.4	16.8	19.4	20.4	20.6 +	19.1	17.5	15.0	13.0	
Jahr	2018	2018	2017	2007	2011	2017	2015	2018	2011	2018	2018	2018	
Minimum	4.0	3.9 -	5.7	7.3	9.5	10.7	13.0	13.1 +	12.8	10.1	7.1	5.4	
Jahr	2009	2012	2012	2008	2008	2013	2016	2007	2008	2010	2007	2007	
Amplitude	2.8 -	3.8	3.7	4.9	4.5	5.2 +	5.2 +	4.0	4.2	4.8	3.2	3.4	
Jahr	2013	2012	2012	2007	2009	2017	2015	2011	2011	2009	2013	2016	
Periode	Mittel	11.9 °C		Maximum	20.6 (11.Aug 2018)		Minimum	3.9 (18.Feb 2012)		Amplitude	16.7 °C		

Darstellung der letzten 12 Jahre

