

Grundwasserstände

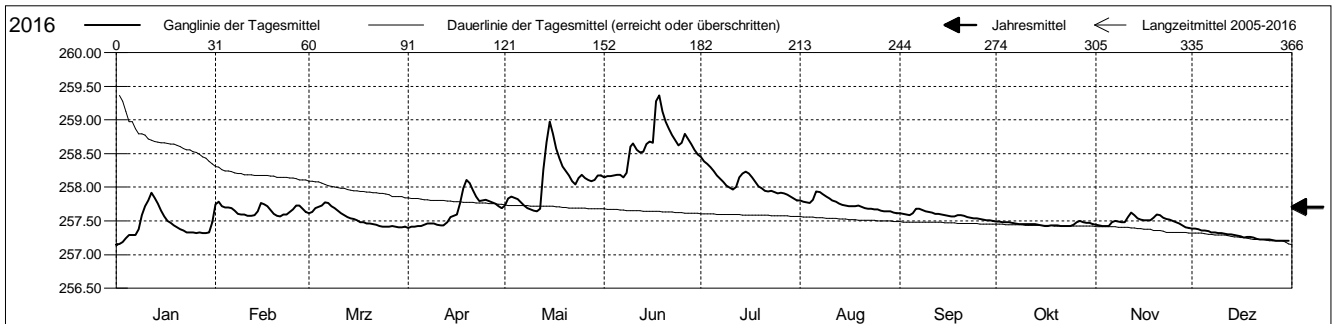
Ergolzthal

Pratteln 41.J.8 Hausmatt
 Abstichpunkt: 0.00 m ü.M.
 OK Terrain: 0.00 m ü.M.

Amt für Umweltschutz und Energie

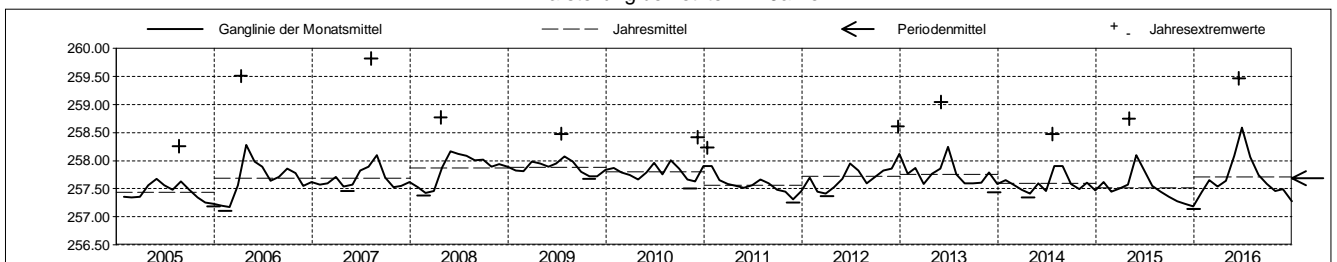
Kanton Basel-Landschaft
 Koordinaten: 0.00 / 0.00

2016	Januar	Februar	März	April	Mai	Juni	Juli	August	September	Oktober	November	Dezember	
1	257.14 -	257.75	257.61	257.40 -	257.72	258.15 -	258.45 +	257.80	257.61	257.50 +	257.45	257.39 +	1
2	257.16	257.78 +	257.63	257.41	257.83	258.16	258.39	257.79	257.60	257.49	257.43	257.38	2
3	257.19	257.72	257.69	257.42	257.86	258.16	258.35	257.78	257.59	257.48	257.42	257.37	3
4	257.24	257.70	257.71	257.42	257.84	258.17	258.29	257.76	257.58	257.48	257.42	257.36	4
5	257.29	257.70	257.73	257.42	257.82	258.19	258.24	257.82	257.61	257.48	257.43	257.35	5
Tagesmittel													
6	257.29	257.69	257.77 +	257.44	257.78	258.19	258.18	257.93 +	257.68 +	257.47	257.48	257.35	6
7	257.29	257.65	257.76	257.46	257.73	258.15 -	258.12	257.92	257.68 +	257.46	257.50	257.33	7
8	257.38	257.60	257.72	257.47	257.69	258.21	258.08	257.90	257.66	257.45	257.49	257.33	8
9	257.59	257.60	257.69	257.46	257.67	258.60	258.02	257.86	257.64	257.45	257.48	257.32	9
10	257.72	257.60	257.65	257.44	257.65 -	258.65	257.99	257.83	257.63	257.45	257.48	257.32	10
11	257.80	257.58	257.61	257.43	257.65 -	258.56	257.96	257.81	257.62	257.45	257.56	257.31	11
12	257.91 +	257.57 -	257.59	257.44	257.68	258.51	258.01	257.78	257.61	257.45	257.62 +	257.30	12
13	257.85	257.58	257.56	257.48	258.26	258.53	258.15	257.76	257.60	257.45	257.59	257.30	13
14	257.76	257.65	257.54	257.56	258.67	258.65	258.21	257.74	257.59	257.45	257.54	257.29	14
Max. +	257.66	257.77	257.53	257.57	258.97 +	258.68	258.24	257.73	257.58	257.43	257.52	257.28	15
16	257.57	257.75	257.51	257.59	258.79	258.66	258.20	257.71	257.57	257.43	257.51	257.27	16
17	257.50	257.72	257.48	257.77	258.58	259.28	258.14	257.72	257.57	257.42 -	257.51	257.26	17
18	257.47	257.66	257.48	257.99	258.43	259.36 +	258.08	257.72	257.57	257.43	257.51	257.26	18
19	257.44	257.61	257.47	258.10 +	258.31	259.12	258.02	257.73	257.58	257.44	257.55	257.26	19
Min. -	257.40	257.57 -	257.46	258.06	258.24	258.98	257.99	257.71	257.59	257.43	257.60	257.25	20
21	257.37	257.57 -	257.45	257.95	258.17	258.87	257.95	257.69	257.57	257.42 -	257.58	257.24	21
22	257.35	257.59	257.44	257.86	258.09	258.78	257.94	257.68	257.56	257.42 -	257.55	257.23	22
23	257.33	257.60	257.43	257.80	258.04	258.70	257.95	257.68	257.55	257.42 -	257.53	257.22	23
24	257.33	257.64	257.41	257.81	258.14	258.62	257.93	257.68	257.54	257.42 -	257.52	257.22	24
25	257.33	257.67	257.41	257.82	258.18	258.66	257.90	257.67	257.53	257.45	257.50	257.22	25
26	257.32	257.73	257.42	257.80	258.14	258.79	257.91	257.65	257.53	257.48	257.48	257.21	26
27	257.33	257.73	257.42	257.78	258.11	258.72	257.91	257.64	257.51	257.50 +	257.46	257.21	27
28	257.32	257.68	257.42	257.76	258.09	258.64	257.89	257.65	257.51	257.48	257.43	257.21	28
29	257.32	257.63	257.40 -	257.72	258.11	258.55	257.86	257.64	257.51	257.48	257.41	257.21	29
30	257.33		257.40 -	257.69	258.18	258.49	257.83	257.63	257.50 -	257.47	257.40 -	257.20 -	30
31	257.48		257.41		258.17		257.80 -	257.62 -		257.45		257.20 -	31
Monatsmittel	257.43	257.66	257.54	257.64	258.08	258.59 +	258.06	257.74	257.58	257.45	257.50	257.28 -	
Maximum	257.93	257.82	257.78	258.13	259.01	259.47 +	258.47	257.94	257.68	257.51	257.63	257.39 -	
Datum	12.01	01.02	06.03	19.04	15.05	17.06	01.07	06.08	06.09	27.10	12.11	01.12	
Amplitude	0.79	0.26	0.38	0.73	1.37	1.34	0.67	0.33	0.19	0.10	0.24	0.20	
Jahr 2016	Mittel	257.71 m ü.M.		Maximum	259.47 (17.Jun)		Minimum	257.14 (01.Jan)		Amplitude		2.33 m	



Periode	2005 - 2016												
Monatsmittel	257.62	257.57 -	257.58	257.70	257.82	257.91 +	257.81	257.78	257.67	257.59	257.58	257.60	
Maximum	258.39	258.35	258.39	258.51	259.01	259.47 +	258.48	259.82 +	259.27	258.47	258.23 -	258.61	
Jahr	2010	2013	2006	2006	2016	2016	2009	2007	2006	2012	2012	2012	
Minimum	257.13	257.10 -	257.14	257.34	257.46 +	257.40	257.43	257.39	257.30	257.23	257.18	257.14	
Jahr	2006	2006	2006	2014	2007	2014	2005	2015	2015	2015	2015	2015	
Amplitude	0.79	0.75	1.25	1.58	1.37	1.34	1.02	2.12 +	1.73	0.89	0.62 -	0.85	
Jahr	2016	2013	2006	2006	2016	2016	2014	2007	2006	2012	2012	2010	
Periode	Mittel	257.69 m ü.M.		Maximum	259.82 (09.Aug 2007)		Minimum	257.10 (10.Feb 2006)		Amplitude		2.72 m	

Darstellung der letzten 12 Jahre



Grundwassertemperatur

Ergolzthal

Pratteln

Abstichpunkt:

OK Terrain:

41.J.8

0.00

0.00

Hausmatt

m ü.M.

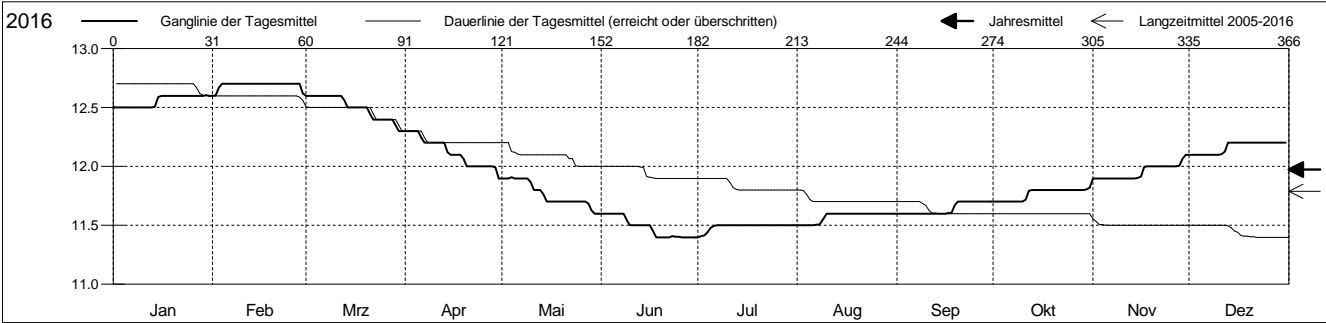
m ü.M.

Amt für Umweltschutz und Energie

Kanton Basel-Landschaft

Koordinaten: 0.00 / 0.00

2016	Januar	Februar	März	April	Mai	Juni	Juli	August	September	Oktober	November	Dezember	
1	12.5 -	12.6 -	12.6 +	12.3 +	11.9 +	11.6 +	11.4 -	11.5 -	11.6 -	11.7 -	11.9 -	12.1 -	1
2	12.5 -	12.6 -	12.6 +	12.3 +	11.9 +	11.6 +	11.4 -	11.5 -	11.6 -	11.7 -	11.9 -	12.1 -	2
3	12.5 -	12.7 +	12.6 +	12.3 +	11.9 +	11.6 +	11.4 -	11.5 -	11.6 -	11.7 -	11.9 -	12.1 -	3
4	12.5 -	12.7 +	12.6 +	12.3 +	11.9 +	11.6 +	11.4 -	11.5 -	11.6 -	11.7 -	11.9 -	12.1 -	4
5	12.5 -	12.7 +	12.6 +	12.3 +	11.9 +	11.6 +	11.5 +	11.5 -	11.6 -	11.7 -	11.9 -	12.1 -	5
6	12.5 -	12.7 +	12.6 +	12.2	11.9 +	11.6 +	11.5 +	11.5 -	11.6 -	11.7 -	11.9 -	12.1 -	6
7	12.5 -	12.7 +	12.6 +	12.2	11.9 +	11.6 +	11.5 +	11.5 -	11.6 -	11.7 -	11.9 -	12.1 -	7
8	12.5 -	12.7 +	12.6 +	12.2	11.9 +	11.6 +	11.5 +	11.5 -	11.6 -	11.7 -	11.9 -	12.1 -	8
9	12.5 -	12.7 +	12.6 +	12.2	11.9 +	11.5	11.5 +	11.6 +	11.6 -	11.7 -	11.9 -	12.1 -	9
10	12.5 -	12.7 +	12.6 +	12.2	11.9 +	11.5	11.5 +	11.6 +	11.6 -	11.7 -	11.9 -	12.1 -	10
11	12.5 -	12.7 +	12.6 +	12.2	11.8	11.5	11.5 +	11.6 +	11.6 -	11.7 -	11.9 -	12.1 -	11
12	12.5 -	12.7 +	12.6 +	12.2	11.8	11.5	11.5 +	11.6 +	11.6 -	11.8 +	11.9 -	12.1 -	12
13	12.5 -	12.7 +	12.6 +	12.2	11.8	11.5	11.5 +	11.6 +	11.6 -	11.8 +	11.9 -	12.2 +	13
14	12.5 -	12.7 +	12.5	12.1	11.8	11.5	11.5 +	11.6 +	11.6 -	11.8 +	11.9 -	12.2 +	14
15	12.6 +	12.7 +	12.5	12.1	11.7	11.5	11.5 +	11.6 +	11.6 -	11.8 +	11.9 -	12.2 +	15
16	12.6 +	12.7 +	12.5	12.1	11.7	11.5	11.5 +	11.6 +	11.6 -	11.8 +	11.9 -	12.2 +	16
17	12.6 +	12.7 +	12.5	12.1	11.7	11.5	11.5 +	11.6 +	11.6 -	11.8 +	12.0	12.2 +	17
18	12.6 +	12.7 +	12.5	12.1	11.7	11.4 -	11.5 +	11.6 +	11.6 -	11.8 +	12.0	12.2 +	18
19	12.6 +	12.7 +	12.5	12.1	11.7	11.4 -	11.5 +	11.6 +	11.7 +	11.8 +	12.0	12.2 +	19
20	12.6 +	12.7 +	12.5	12.0	11.7	11.4 -	11.5 +	11.6 +	11.7 +	11.8 +	12.0	12.2 +	20
21	12.6 +	12.7 +	12.4	12.0	11.7	11.4 -	11.5 +	11.6 +	11.7 +	11.8 +	12.0	12.2 +	21
22	12.6 +	12.7 +	12.4	12.0	11.7	11.4 -	11.5 +	11.6 +	11.7 +	11.8 +	12.0	12.2 +	22
23	12.6 +	12.7 +	12.4	12.0	11.7	11.4 -	11.5 +	11.6 +	11.7 +	11.8 +	12.0	12.2 +	23
24	12.6 +	12.7 +	12.4	12.0	11.7	11.4 -	11.5 +	11.6 +	11.7 +	11.8 +	12.0	12.2 +	24
25	12.6 +	12.7 +	12.4	12.0	11.7	11.4 -	11.5 +	11.6 +	11.7 +	11.8 +	12.0	12.2 +	25
26	12.6 +	12.7 +	12.4	12.0	11.7	11.4 -	11.5 +	11.6 +	11.7 +	11.8 +	12.0	12.2 +	26
27	12.6 +	12.7 +	12.4	12.0	11.7	11.4 -	11.5 +	11.6 +	11.7 +	11.8 +	12.0	12.2 +	27
28	12.6 +	12.7 +	12.4	12.0	11.7	11.4 -	11.5 +	11.6 +	11.7 +	11.8 +	12.0	12.2 +	28
29	12.6 +	12.6 -	12.4	12.0	11.6 -	11.4 -	11.5 +	11.6 +	11.7 +	11.8 +	12.1 +	12.2 +	29
30	12.6 +		12.3 -	11.9 -	11.6 -	11.4 -	11.5 +	11.6 +	11.7 +	11.8 +	12.1 +	12.2 +	30
31	12.6 +		12.3 -		11.6 -		11.5 +	11.6 +		11.8 +		12.2 +	31
Monatsmittel	12.6	12.7 +	12.5	12.1	11.8	11.5 -	11.5 -	11.6	11.6	11.8	12.0	12.2	
Maximum	12.7 +	12.7 +	12.6	12.3	12.1	11.6	11.5 -	11.6	11.8	11.9	12.1	12.2	
Datum	30.01	02.02	01.03	01.04	04.05	01.06	02.07	07.08	29.09	30.10	28.11	11.12	
Minimum	12.5	12.6 +	12.3	11.9	11.6	11.4 -	11.4 -	11.5	11.6	11.7	11.9	12.1	
Datum	01.01	01.02	29.03	29.04	28.05	17.06	01.07	01.08	01.09	01.10	01.11	01.12	
Amplitude	0.2	0.1	0.3	0.4	0.5	0.2	0.1	0.1	0.2	0.2	0.2	0.1	
Jahr 2016	Mittel	12.0 °C		Maximum	12.7 (30.Jan)		Minimum	11.4 (17.Jun)		Amplitude	1.3 °C		



Periode	2005 - 2016												
Monatsmittel	12.3 +	12.2	12.0	11.8	11.6	11.4 -	11.4 -	11.4 -	11.5	11.7	12.0	12.2	
Maximum	12.8 +	12.7	12.6	12.3	12.1	11.6	11.5 -	11.6	11.9	12.2	12.6	12.8 +	
Jahr	2013	2013	2016	2016	2016	2010	2007	2007	2007	2012	2012	2012	
Minimum	11.6	11.7 +	11.6	11.3	11.2	11.1 -	11.1 -	11.2	11.2	11.4	11.5	11.5	
Jahr	2012	2012	2008	2008	2008	2008	2008	2008	2009	2006	2006	2011	
Amplitude	0.2	0.4	0.4	0.4	0.5 +	0.2	0.1 -	0.1 -	0.4	0.5 +	0.5 +	0.3	
Jahr	2010	2009	2009	2016	2013	2012	2007	2007	2014	2008	2013	2009	
Periode	Mittel	11.8 °C		Maximum	12.8 (11.Dez 2012)		Minimum	11.1 (29.Jun 2008)		Amplitude	1.7 °C		

Darstellung der letzten 12 Jahre

