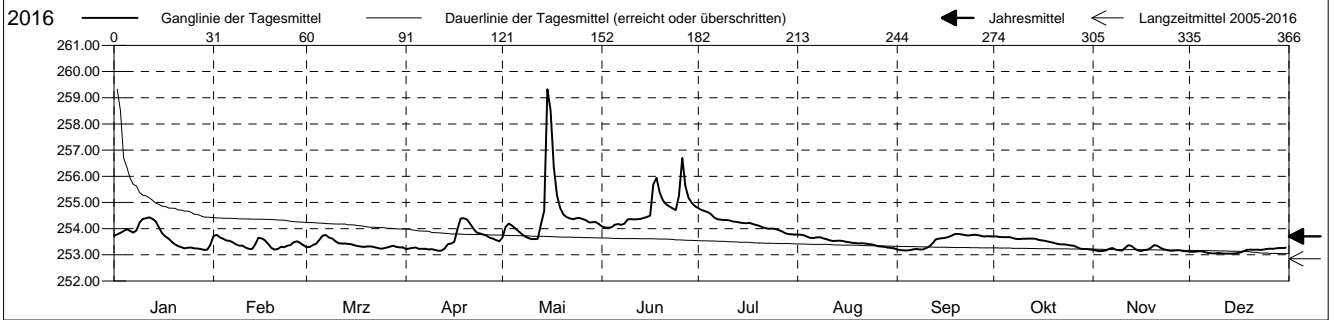


Grundwasserstände

Birstal
 Muttentz 21.J.01 Asprain
 Abstichpunkt: 0.00 m ü.M.
 OK Terrain: 0.00 m ü.M.

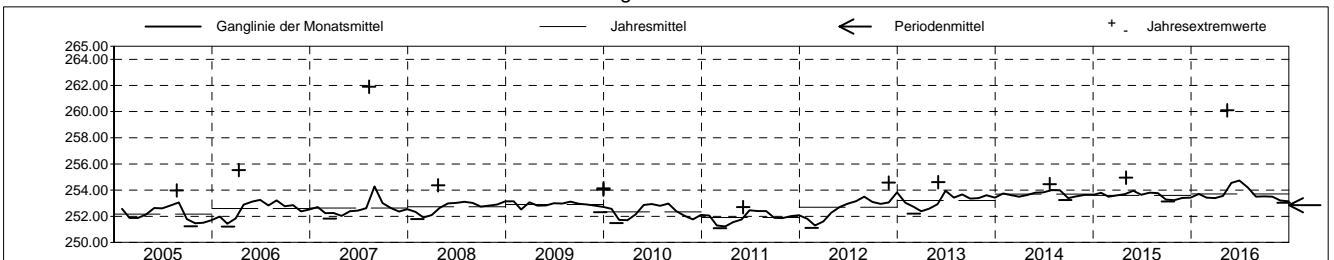
Amt für Umweltschutz und Energie
Kanton Basel-Landschaft
 Koordinaten: 0.00 / 0.00

2016	Januar	Februar	März	April	Mai	Juni	Juli	August	September	Oktober	November	Dezember	
1	253.73	253.72	253.29	253.22	253.66	254.08	254.78 +	253.77 +	253.20	253.71 +	253.19	253.12	1
2	253.78	253.76 +	253.30	253.24	254.07	254.04	254.71	253.77 +	253.18	253.70	253.16	253.11	2
3	253.84	253.67	253.37	253.27	254.20	254.03 -	254.67	253.74	253.17 -	253.68	253.13 -	253.12	3
4	253.90	253.61	253.42	253.27	254.11	254.05	254.63	253.69	253.17 -	253.68	253.14	253.13	4
5	253.98	253.55	253.57	253.23	254.01	254.14	254.55	253.64	253.18	253.67	253.17	253.13	5
6	253.91	253.54	253.73	253.23	253.90	254.17	254.42	253.65	253.21	253.68	253.23	253.09	6
7	253.84	253.48	253.75 +	253.23	253.79	254.14	254.36	253.67	253.22	253.64	253.26	253.07	7
8	253.93	253.40	253.66	253.20	253.71	254.19	254.34	253.67	253.21	253.61	253.20	253.06	8
9	254.23	253.35	253.62	253.21	253.64	254.35	254.33	253.63	253.21	253.60	253.18	253.05	9
10	254.37	253.35	253.51	253.18	253.60 -	254.37	254.33	253.60	253.26	253.61	253.16	253.07	10
11	254.40	253.28	253.44	253.15 -	253.60 -	254.35	254.30	253.55	253.32	253.61	253.27	253.06	11
12	254.43 +	253.23	253.43	253.16	253.62	254.36	254.27	253.53	253.44	253.62	253.37 +	253.04 -	12
13	254.37	253.22	253.43	253.24	254.18	254.37	254.25	253.53	253.59	253.62	253.33	253.04 -	13
14	254.28	253.39	253.42	253.41	254.67	254.41	254.23	253.54	253.62	253.61	253.24	253.05	14
15	254.04	253.65	253.40	253.43	253.33 +	254.44	254.21	253.53	253.63	253.57	253.16	253.05	15
16	253.82	253.63	253.37	253.49	258.52	254.50	254.21	253.50	253.65	253.55	253.15	253.07	16
17	253.70	253.56	253.33	253.98	256.35	255.69	254.22	253.48	253.69	253.53	253.19	253.09	17
18	253.62	253.41	253.31	254.39	255.28	255.94	254.18	253.46	253.74	253.50	253.20	253.15	18
19	253.50	253.26	253.30	254.40 +	254.79	255.37	254.14	253.45	253.80 +	253.48	253.26	253.19	19
20	253.40	253.20 -	253.32	254.34	254.55	255.08	254.11	253.44	253.80 +	253.45	253.37 +	253.20	20
21	253.33	253.22	253.32	254.18	254.44	254.93	254.06	253.44	253.78	253.41	253.35	253.19	21
22	253.29	253.31	253.30	253.99	254.39	254.85	254.02	253.43	253.75	253.40	253.26	253.20	22
23	253.25	253.29	253.26	253.85	254.36	254.77	253.99	253.41	253.74	253.40	253.21	253.19	23
24	253.27	253.35	253.24 -	253.82	254.40	254.71	254.00	253.40	253.75	253.38	253.18	253.20	24
25	253.27	253.38	253.25	253.78	254.40	255.26	253.99	253.37	253.76	253.36	253.15	253.22	25
26	253.25	253.48	253.28	253.73	254.37	256.70 +	253.95	253.33	253.76	253.35	253.16	253.24	26
27	253.24	253.51	253.31	253.66	254.32	255.63	253.90	253.31	253.73	253.29	253.18	253.23	27
28	253.22	253.45	253.34	253.62	254.24	255.18	253.84	253.30	253.70	253.24	253.18	253.24	28
29	253.19 -	253.37	253.30	253.57	254.24	254.98	253.79	253.28	253.71	253.22	253.14	253.26	29
30	253.19 -		253.29	253.51	254.26	254.85	253.78	253.26	253.70	253.22	253.13 -	253.26	30
31	253.37		253.28	254.18	254.18		253.77 -	253.25 -	253.70	253.20 -	253.13 -	253.27 +	31
Monatsmittel	253.71	253.43	253.39	253.57	254.55	254.73 +	254.20	253.50	253.52	253.50	253.21	253.14 -	
Maximum	254.45	253.78	253.77	254.40	260.10 +	257.13	254.81	253.78	253.82	253.72	253.38	253.04 -	
Datum	12.01	01.02	07.03	18.04	15.05	26.06	01.07	01.08	19.09	01.10	12.11	31.12	
Amplitude	1.27	0.59	0.54	1.26	6.59	3.10	1.04	0.56	0.66	0.53	0.26	0.25	
Jahr 2016	Mittel	253.71 m ü.M.		Maximum	260.10 (15.Mai)		Minimum	253.03 (12.Dez)		Amplitude	7.07 m		



Periode	2005 - 2016												
Monatsmittel	252.79	252.30 -	252.38	252.66	253.04	253.24	253.18	253.38 +	252.85	252.76	252.72	252.86	
Maximum	254.45	253.96 -	254.22	255.53	260.10	257.13	254.81	261.90 +	254.43	254.30	254.57	254.48	
Jahr	2016	2013	2006	2006	2016	2016	2016	2007	2006	2006	2012	2013	
Minimum	251.34	251.11	251.09 -	251.33	251.64	252.09	252.18 +	252.13	251.30	251.24	251.39	251.34	
Jahr	2012	2012	2011	2011	2011	2007	2011	2011	2005	2005	2005	2005	
Amplitude	2.26	1.72	3.01	4.13	6.59	3.10	1.04 -	9.34 +	2.25	1.85	2.05	1.73	
Jahr	2010	2013	2006	2006	2016	2016	2016	2007	2006	2006	2012	2010	
Periode	Mittel	252.85 m ü.M.		Maximum	261.90 (10.Aug 2007)		Minimum	251.09 (11.Mrz 2011)		Amplitude	10.81 m		

Darstellung der letzten 12 Jahre

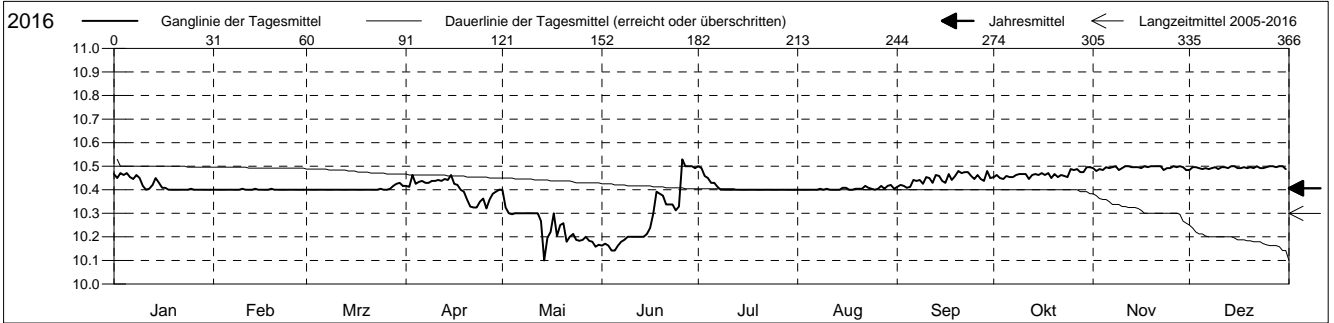


Grundwassertemperatur

Birstal
 Muttenz 21.J.01 Asprain
 Abstichpunkt: 0.00 m ü.M.
 OK Terrain: 0.00 m ü.M.

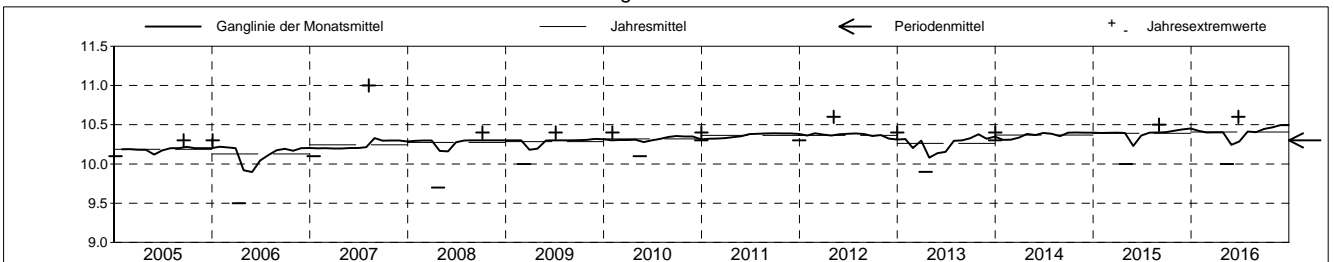
Amt für Umweltschutz und Energie
Kanton Basel-Landschaft
 Koordinaten: 0.00 / 0.00

2016	Januar	Februar	März	April	Mai	Juni	Juli	August	September	Oktober	November	Dezember	
1	10.5 +	10.4 +	10.4 +	10.4	10.4 +	10.2	10.5 +	10.4 +	10.4 -	10.5 +	10.5 +	10.5 +	1
2	10.4 -	10.4 +	10.4 +	10.4	10.3	10.2	10.5 +	10.4 +	10.4 -	10.5 +	10.5 +	10.5 +	2
3	10.5 +	10.4 +	10.4 +	10.5 +	10.3	10.2	10.5 +	10.4 +	10.4 -	10.4 -	10.5 +	10.5 +	3
4	10.5 +	10.4 +	10.4 +	10.4	10.3	10.1 -	10.4 -	10.4 +	10.4 -	10.4 -	10.5 +	10.5 +	4
5	10.5 +	10.4 +	10.4 +	10.4	10.3	10.1 -	10.4 -	10.4 +	10.4 -	10.5 +	10.5 +	10.5 +	5
6	10.5 +	10.4 +	10.4 +	10.4	10.3	10.2	10.4 -	10.4 +	10.4 -	10.5 +	10.5 +	10.5 +	6
7	10.4 -	10.4 +	10.4 +	10.4	10.3	10.2	10.4 -	10.4 +	10.4 -	10.5 +	10.5 +	10.5 +	7
8	10.5 +	10.4 +	10.4 +	10.4	10.3	10.2	10.4 -	10.4 +	10.4 -	10.5 +	10.5 +	10.5 +	8
9	10.4 -	10.4 +	10.4 +	10.4	10.3	10.2	10.4 -	10.4 +	10.4 -	10.5 +	10.5 +	10.5 +	9
10	10.4 -	10.4 +	10.4 +	10.4	10.3	10.2	10.4 -	10.4 +	10.5 +	10.5 +	10.5 +	10.5 +	10
11	10.4 -	10.4 +	10.4 +	10.4	10.3	10.2	10.4 -	10.4 +	10.4 -	10.5 +	10.5 +	10.5 +	11
12	10.4 -	10.4 +	10.4 +	10.4	10.3	10.2	10.4 -	10.4 +	10.4 -	10.4 -	10.5 +	10.5 +	12
13	10.4 -	10.4 +	10.4 +	10.4	10.3	10.2	10.4 -	10.4 +	10.5 +	10.5 +	10.5 +	10.5 +	13
14	10.4 -	10.4 +	10.4 +	10.4	10.1 -	10.2	10.4 -	10.4 +	10.5 +	10.5 +	10.5 +	10.5 +	14
15	10.4 -	10.4 +	10.4 +	10.5 +	10.2	10.2	10.4 -	10.4 +	10.4 -	10.5 +	10.5 +	10.5 +	15
16	10.4 -	10.4 +	10.4 +	10.4	10.2	10.2	10.4 -	10.4 +	10.4 -	10.5 +	10.5 +	10.5 +	16
17	10.4 -	10.4 +	10.4 +	10.4	10.3	10.3	10.4 -	10.4 +	10.5 +	10.5 +	10.5 +	10.5 +	17
18	10.4 -	10.4 +	10.4 +	10.4	10.2	10.4	10.4 -	10.4 +	10.4 -	10.5 +	10.5 +	10.5 +	18
19	10.4 -	10.4 +	10.4 +	10.4	10.3	10.4	10.4 -	10.4 +	10.5 +	10.4 -	10.5 +	10.5 +	19
20	10.4 -	10.4 +	10.4 +	10.4	10.3	10.4	10.4 -	10.4 +	10.5 +	10.5 +	10.5 +	10.5 +	20
21	10.4 -	10.4 +	10.4 +	10.3 -	10.2	10.3	10.4 -	10.4 +	10.5 +	10.5 +	10.5 +	10.5 +	21
22	10.4 -	10.4 +	10.4 +	10.3 -	10.2	10.3	10.4 -	10.4 +	10.5 +	10.5 +	10.5 +	10.5 +	22
23	10.4 -	10.4 +	10.4 +	10.3 -	10.2	10.3	10.4 -	10.4 +	10.5 +	10.5 +	10.5 +	10.5 +	23
24	10.4 -	10.4 +	10.4 +	10.4	10.2	10.3	10.4 -	10.4 +	10.5 +	10.5 +	10.5 +	10.5 +	24
25	10.4 -	10.4 +	10.4 +	10.4	10.2	10.3	10.4 -	10.4 +	10.4 -	10.5 +	10.5 +	10.5 +	25
26	10.4 -	10.4 +	10.4 +	10.3 -	10.2	10.5 +	10.4 -	10.4 +	10.5 +	10.5 +	10.5 +	10.5 +	26
27	10.4 -	10.4 +	10.4 +	10.4	10.2	10.5 +	10.4 -	10.4 +	10.4 -	10.5 +	10.5 +	10.5 +	27
28	10.4 -	10.4 +	10.4 +	10.4	10.2	10.5 +	10.4 -	10.4 +	10.4 -	10.5 +	10.5 +	10.5 +	28
29	10.4 -	10.4 +	10.4 +	10.4	10.2	10.5 +	10.4 -	10.4 +	10.5 +	10.5 +	10.5 +	10.5 +	29
30	10.4 -	10.4 +	10.4 +	10.4	10.2	10.5 +	10.4 -	10.4 +	10.4 -	10.5 +	10.5 +	10.5 +	30
31	10.4 -	10.4 +	10.4 +	10.4	10.2	10.4 -	10.4 -	10.4 +	10.4 -	10.5 +	10.5 +	10.5 +	31
Monatsmittel	10.4	10.4	10.4	10.4	10.2 -	10.3	10.4	10.4	10.4	10.5 +	10.5 +	10.5 +	
Maximum	10.5	10.5	10.5	10.5	10.4 -	10.6 +	10.5	10.5	10.5	10.5	10.5	10.5	
Datum	01.01	10.02	24.03	01.04	01.05	26.06	01.07	08.08	01.09	01.10	01.11	01.12	
Minimum	10.4 +	10.4 +	10.4 +	10.3	10.0 -	10.1	10.4 +	10.4 +	10.4 +	10.4 +	10.4 +	10.4 +	
Datum	01.01	01.02	01.03	19.04	14.05	01.06	02.07	01.08	01.09	01.10	01.11	01.12	
Amplitude	0.1	0.1	0.1	0.2	0.4	0.5	0.1	0.1	0.1	0.1	0.1	0.1	
Jahr 2016	Mittel	10.4 °C		Maximum	10.6 (26.Jun)		Minimum	10.0 (14.Mai)			Amplitude	0.6 °C	



Periode	2005 - 2016												
Monatsmittel	10.3 +	10.3 +	10.3 +	10.2 -	10.2 -	10.3 +	10.3 +	10.3 +	10.3 +	10.3 +	10.3 +	10.3 +	10.3 +
Maximum	10.5 -	10.5 -	10.5 -	10.5 -	10.6	10.6	10.5 -	11.0 +	10.5 -	10.5 -	10.5 -	10.5 -	10.5 -
Jahr	2016	2016	2016	2016	2012	2016	2016	2007	2015	2015	2015	2015	
Minimum	10.1	10.0	10.0	9.5 -	9.7	10.0	10.1	10.1	10.1	10.1	10.2 +	10.1	
Jahr	2005	2013	2009	2006	2006	2006	2006	2006	2006	2006	2005	2006	
Amplitude	0.2	0.3	0.3	0.7	0.4	0.5	0.2	0.8 +	0.2	0.2	0.1 -	0.2	
Jahr	2007	2013	2009	2006	2015	2016	2013	2007	2006	2006	2007	2006	
Periode	Mittel	10.3 °C		Maximum	11.0 (09.Aug 2007)		Minimum	9.5 (11.Apr 2006)			Amplitude	1.5 °C	

Darstellung der letzten 12 Jahre

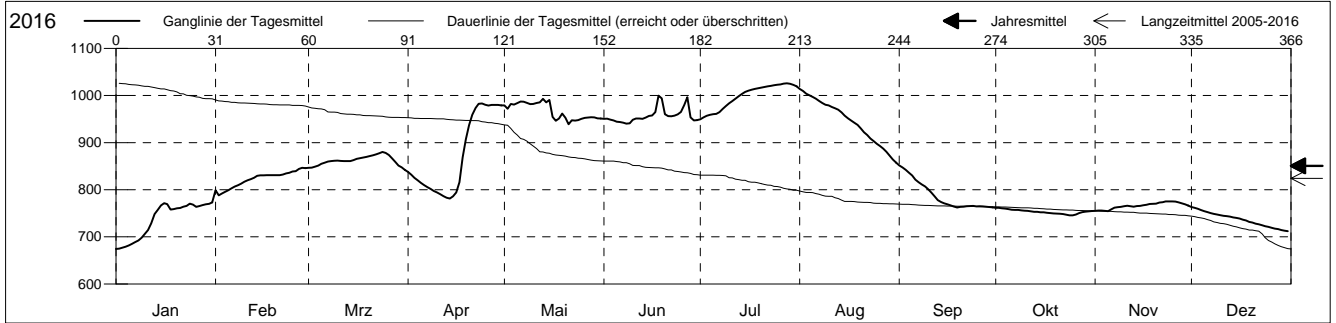


Leitfähigkeit

Birstal
 Muttenz 21.J.01 Asprain
 Abstichpunkt: 0.00 m ü.M.
 OK Terrain: 0.00 m ü.M.

Amt für Umweltschutz und Energie
Kanton Basel-Landschaft
 Koordinaten: 0.00 / 0.00

2016	Januar	Februar	März	April	Mai	Juni	Juli	August	September	Oktober	November	Dezember		
1	674 -	799	847	838	979	950	950 -	1014 +	852 +	762 +	755 -	764 +	1	
2	675	788 -	847	832	972	951	954	1009	847	761	756	762	2	
3	677	792	849	825	982	949	957	1004	842	761	756	759	3	
4	679	795	851	820	981	947	959	1000	836	760	755 -	757	4	
5	682	799	855	814	984	945	961	997	830	759	755 -	755	5	
Tagesmittel														
6	685	803	858	810	987	944	961	994	821	758	758	753	6	
7	689	807	860	806	987	942	965	989	816	757	762	750	7	
8	693	810	861	802	985	940 -	971	984	811	757	763	749	8	
9	698	813	862	797	982	941	978	980	807	756	764	748	9	
10	706	817	862	794	982	948	983	979	801	756	765	746	10	
11	714	820	861	791	984	951	988	976	794	755	766	745	11	
12	729	822	861	786	985	951	994	973	786	754	765	744	12	
13	748	826	861	783	993 +	951	999	970	778	753	764	743	13	
14	757	830	861	781 -	986	953	1004	964	774	753	765	741	14	
15	767	831	863	786	991	957	1008	957	771	752	766	740	15	
Max. +														
16	771	831	865	794	955	958	1010	952	769	752	767	739	16	
17	769	831	867	816	946	965	1012	947	767	751	768	737	17	
18	758	831	868	869	951	1000 +	1014	943	765	750	770	735	18	
19	759	831	870	907	962	994	1015	937	763 -	750	770	732	19	
20	761	831	872	937	953	960	1017	930	764	750	770	730	20	
Min. -														
21	761	831	873	959	939 -	956	1018	922	764	749	773	728	21	
22	764	832	875	974	947	956	1020	916	765	748	774	726	22	
23	766	835	877	982	947	957	1021	909	766	747	775 +	725	23	
24	770	836	880 +	983 +	948	960	1022	903	766	746 -	775 +	723	24	
25	769	839	878	981	951	965	1023	898	765	746 -	775 +	721	25	
26	764	839	874	979	953	980	1024	893	765	748	775 +	719	26	
27	765	844	866	980	953	996	1025	887	765	750	773	718	27	
28	767	846 +	859	980	954	954	1026 +	881	764	753	771	716	28	
29	769	846 +	852	980	954	947	1025	873	764	753	769	715	29	
30	770		848	979	952	948	1023	864	763 -	754	767	713	30	
31	773 +		842 -		951		1019	857 -		755		712 -	31	
Monatsmittel	737 -	823	862	872	967	957	998 +	945	788	753	766	737 -		
Maximum	777	847	883	985	1116 +	1008	1026	1018	860	764 -	779	769		
Datum	31.01	28.02	24.03	23.04	15.05	18.06	27.07	01.08	01.09	01.10	23.11	01.12		
Minimum	672 -	777	836	775	914	920	948 +	851	758	743	751	711		
Datum	01.01	01.02	31.03	14.04	15.05	26.06	01.07	31.08	19.09	25.10	06.11	30.12		
Amplitude	105	70	47	210	202	88	78	167	102	21	28	58		
Jahr 2016	Mittel	851 µs/cm		Maximum	1116 (15.Mai)			Minimum	672 (01.Jan)			Amplitude	444 µs/cm	



Periode	2005 - 2016													
Monatsmittel	816	840	898	947	956 +	894	823	777	746	713 -	722	760		
Maximum	1117	1123	1068	1149	1236 +	1171	1169	1072	1041	1043	906 -	1122		
Jahr	2013	2013	2007	2015	2015	2013	2013	2007	2007	2006	2012	2012		
Minimum	672	703	716	720 +	672	619	618	587 -	587 -	597	601	609		
Jahr	2016	2006	2008	2012	2011	2011	2011	2010	2011	2008	2009	2011		
Amplitude	134	241	247	322	313	239	274	356 +	194	208	131 -	244		
Jahr	2013	2013	2006	2008	2010	2005	2013	2007	2014	2007	2006	2012		
Periode	Mittel	824 µs/cm		Maximum	1236 (04.Mai 2015)			Minimum	587 (15.Aug 2010)			Amplitude	649 µs/cm	

Darstellung der letzten 12 Jahre

