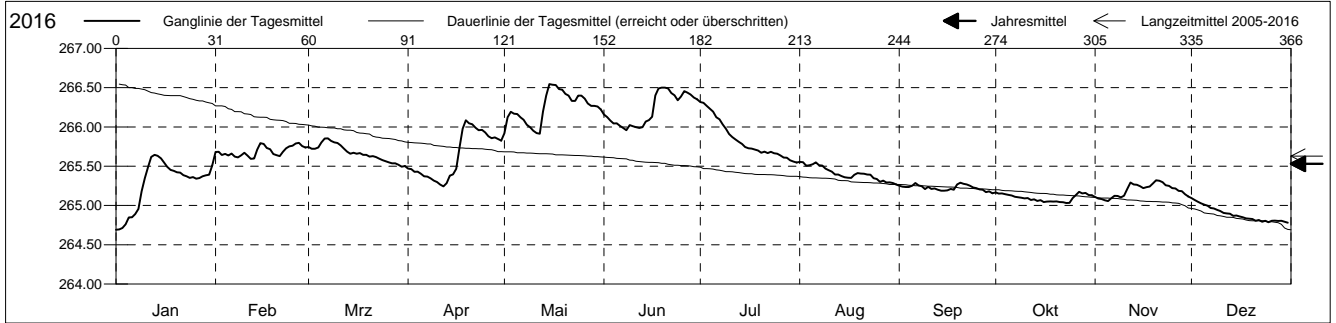


**Grundwasserstände**

Birstal  
 Münchenstein 20.K.4 Hofmatt  
 Abstichpunkt: 0.00 m ü.M.  
 OK Terrain: 0.00 m ü.M.

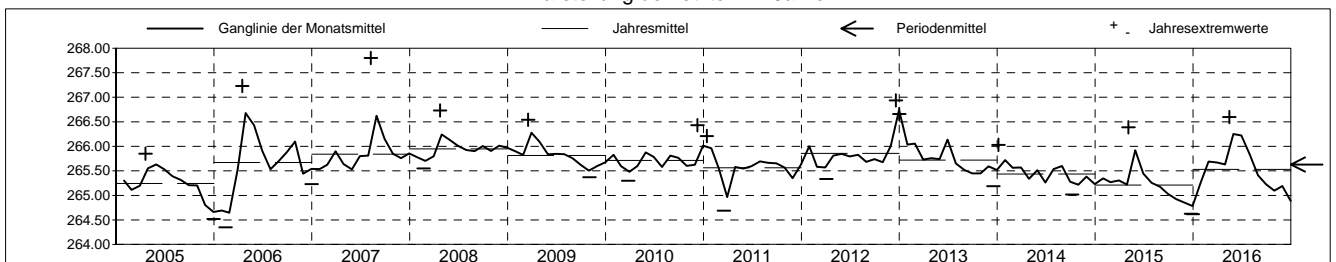
**Amt für Umweltschutz und Energie**  
**Kanton Basel-Landschaft**  
 Koordinaten: 0.00 / 0.00

2016	Januar	Februar	März	April	Mai	Juni	Juli	August	September	Oktober	November	Dezember	
1	264.69 -	265.68	265.74	265.47	265.92	266.16	266.32 +	265.56 +	265.25	265.17 +	265.11	265.10 +	1
2	264.70	265.68	265.72	265.46	266.12	266.13	266.31	265.55	265.24	265.15	265.09	265.07	2
3	264.71	265.64	265.72	265.43	266.19	266.08	266.27	265.50	265.23	265.15	265.08	265.05	3
4	264.76	265.66	265.74	265.43	266.17	266.04	266.23	265.51	265.23	265.14	265.07	265.03	4
5	264.85	265.64	265.80	265.40	266.17	266.05	266.20	265.52	265.25	265.13	265.05 -	265.01	5
Tagesmittel													
6	264.85	265.66	265.85 +	265.37	266.12	266.01	266.12	265.55	265.29 +	265.13	265.09	265.00	6
7	264.89	265.62	265.85 +	265.37	266.09	265.99	266.10	265.51	265.26	265.11	265.12	264.97	7
8	264.96	265.61	265.82	265.35	266.03	265.96 -	266.03	265.51	265.24	265.11	265.12	264.96	8
9	265.18	265.64	265.80	265.32	266.00	266.02	265.98	265.47	265.21	265.10	265.10	264.94	9
10	265.35	265.67	265.80	265.30	265.95	266.01	265.91	265.45	265.24	265.09	265.12	264.93	10
11	265.49	265.63	265.76	265.27	265.92	266.00	265.87	265.43	265.21	265.09	265.21	264.90	11
12	265.62	265.59 -	265.73	265.24 -	265.91 -	265.99	265.84	265.39	265.22	265.07	265.29	264.90	12
13	265.64 +	265.60	265.68	265.28	266.19	266.00	265.81	265.39	265.20	265.08	265.27	264.90	13
14	265.63	265.71	265.66	265.38	266.40	266.07	265.78	265.37	265.19	265.06	265.26	264.87	14
15	265.60	265.79	265.67	265.40	266.55 +	266.09	265.75	265.36	265.19	265.07	265.24	264.87	15
Max. +													
16	265.54	265.78	265.66	265.47	266.54	266.13	265.73	265.35	265.19	265.04	265.22	264.86	16
17	265.49	265.73	265.67	265.73	266.53	266.40	265.72	265.35	265.21	265.05	265.23	264.85	17
18	265.45	265.72	265.64	265.98	266.48	266.49	265.71	265.39	265.20	265.05	265.24	264.84	18
19	265.44	265.65	265.64	266.08 +	266.47	266.50 +	265.70	265.41	265.27	265.05	265.28	264.83	19
20	265.42	265.64	265.62	266.05	266.42	266.50 +	265.67	265.41	265.29 +	265.05	265.32 +	264.83	20
Min. -													
21	265.42	265.63	265.63	266.03	266.40	266.49	265.68	265.40	265.28	265.04	265.32 +	264.80	21
22	265.39	265.68	265.62	265.99	266.33	266.43	265.67	265.39	265.27	265.04	265.30	264.81	22
23	265.37	265.73	265.60	265.96	266.33	266.40	265.68	265.39	265.25	265.03 -	265.26	264.79	23
24	265.35	265.75	265.58	265.96	266.40	266.34	265.67	265.35	265.23	265.03 -	265.25	264.80	24
25	265.36	265.76	265.56	265.93	266.40	266.39	265.66	265.34	265.22	265.09	265.22	264.79	25
26	265.34	265.79	265.55	265.88	266.36	266.46	265.64	265.30	265.20	265.13	265.22	264.80	26
27	265.35	265.80 +	265.54	265.86	266.30	266.44	265.61	265.32	265.20	265.17 +	265.18	264.81	27
28	265.37	265.76	265.54	265.87	266.27	266.41	265.61	265.29	265.17	265.15	265.18	264.80	28
29	265.38	265.74	265.52	265.85	266.27	266.37	265.58	265.29	265.18	265.16	265.14	264.80	29
30	265.39	265.74	265.49 -	265.83	266.26	266.35	265.56	265.29	265.16 -	265.13	265.11	264.79	30
31	265.51	265.70	265.50	265.82	266.22	266.35	265.55 -	265.27 -	265.13	265.13	265.11	264.78 -	31
Monatsmittel	265.27	265.69	265.67	265.63	266.25 +	266.22	265.84	265.41	265.23	265.10	265.19	264.89 -	
Maximum	265.71	265.85	265.91	266.13	266.60 +	266.55	266.36	265.60	265.33	265.21	265.36	265.13 -	
Datum	13.01	26.02	06.03	19.04	15.05	19.06	01.07	01.08	20.09	27.10	20.11	01.12	
Amplitude	1.09	0.34	0.50	0.95	0.85	0.69	0.92	0.42	0.26	0.26	0.38	0.43	
Jahr 2016	Mittel	265.53 m ü.M.		Maximum	266.60 (15.Mai)		Minimum	264.62 (01.Jan)			Amplitude	1.98 m	



Periode	2005 - 2016												
Monatsmittel	265.61	265.52	265.58	265.76	265.85 +	265.78	265.66	265.68	265.58	265.51	265.47 -	265.54	
Maximum	266.66	266.49	266.54	267.23	266.73	266.55	266.36 -	267.80 +	266.71	266.57	266.76	266.94	
Jahr	2013	2013	2009	2006	2006	2016	2016	2007	2007	2006	2012	2012	
Minimum	264.48	264.35 -	264.69	264.97	265.11 +	265.04	265.06	265.02	264.87	264.78	264.59	264.52	
Jahr	2006	2006	2011	2015	2015	2014	2015	2015	2015	2015	2005	2005	
Amplitude	1.09	0.94	1.31	1.28	1.27	0.82 -	0.92	2.18 +	0.88	1.00	1.17	0.99	
Jahr	2016	2013	2006	2006	2015	2013	2016	2007	2006	2006	2012	2010	
Periode	Mittel	265.63 m ü.M.		Maximum	267.80 (09.Aug 2007)		Minimum	264.35 (13.Feb 2006)			Amplitude	3.45 m	

Darstellung der letzten 12 Jahre

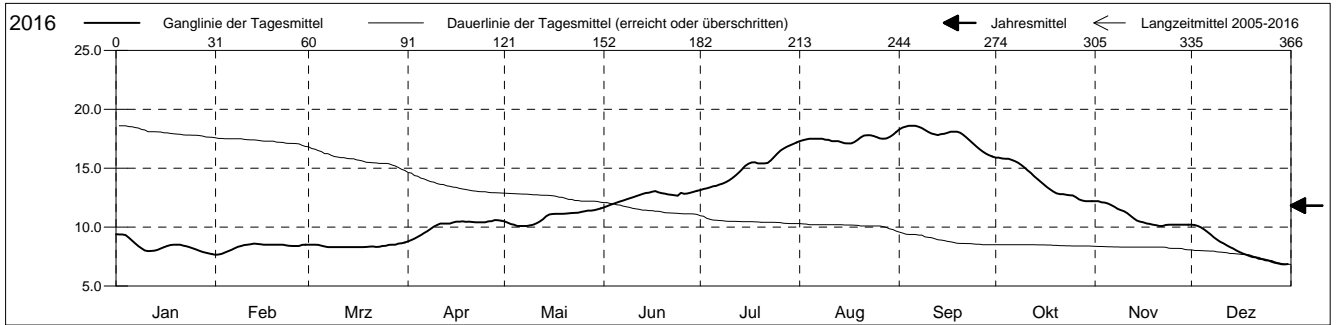


**Grundwassertemperatur**

Birstal  
 Münchenstein 20.K.4 Hofmatt  
 Abstichpunkt: 0.00 m ü.M.  
 OK Terrain: 0.00 m ü.M.

**Amt für Umweltschutz und Energie**  
**Kanton Basel-Landschaft**  
 Koordinaten: 0.00 / 0.00

2016	Januar	Februar	März	April	Mai	Juni	Juli	August	September	Oktober	November	Dezember	
1	9.4 +	7.7 -	8.5	8.8 -	10.5	11.7 -	13.1 -	17.3	18.3	15.9 +	12.2 +	10.2 +	1
2	9.4 +	7.7 -	8.5	8.9	10.4	11.8	13.2	17.4	18.5	15.9 +	12.2 +	10.2 +	2
3	9.4 +	7.7 -	8.5	9.0	10.3	11.9	13.3	17.4	18.5	15.8	12.1	10.1	3
4	9.3	7.9	8.5	9.2	10.2	12.0	13.4	17.5	18.6 +	15.8	12.1	10.0	4
5	9.1	8.0	8.4	9.3	10.1 -	12.1	13.5	17.5	18.6 +	15.8	12.0	9.8	5
Tagesmittel													
6	8.9	8.1	8.4	9.5	10.1 -	12.2	13.5	17.5	18.6 +	15.7	11.9	9.6	6
7	8.6	8.2	8.3 -	9.7	10.1 -	12.3	13.6	17.5	18.5	15.6	11.7	9.4	7
8	8.4	8.3	8.3 -	9.8	10.1 -	12.4	13.7	17.5	18.4	15.5	11.6	9.1	8
9	8.2	8.4	8.3 -	10.0	10.1 -	12.4	13.8	17.4	18.3	15.3	11.4	8.9	9
10	8.0	8.5	8.3 -	10.2	10.2	12.5	14.0	17.4	18.1	15.1	11.3	8.8	10
11	8.0	8.5	8.3 -	10.3	10.3	12.6	14.2	17.3	17.9	14.8	11.2	8.6	11
12	8.0	8.5	8.3 -	10.3	10.5	12.7	14.4	17.3	17.9	14.6	11.0	8.5	12
13	8.0	8.6 +	8.3 -	10.3	10.7	12.8	14.6	17.3	17.8	14.3	10.8	8.3	13
14	8.1	8.6 +	8.3 -	10.3	10.9	12.9	14.9	17.2	17.9	14.1	10.6	8.2	14
15	8.2	8.5	8.3 -	10.4	11.1	12.9	15.2	17.1 -	17.9	13.9	10.5	8.0	15
Max. +													
16	8.3	8.5	8.3 -	10.5	11.1	13.0	15.4	17.1 -	18.0	13.6	10.4	7.9	16
17	8.4	8.5	8.3 -	10.5	11.1	13.1 +	15.5	17.1 -	18.1	13.4	10.3	7.8	17
18	8.5	8.5	8.3 -	10.5	11.1	13.0	15.5	17.2	18.1	13.2	10.3	7.7	18
19	8.5	8.5	8.3 -	10.4	11.1	12.9	15.4	17.4	18.1	13.0	10.2	7.6	19
20	8.5	8.5	8.3 -	10.5	11.1	12.8	15.4	17.6	18.0	12.9	10.2	7.5	20
Min. -													
21	8.5	8.5	8.4	10.4	11.2	12.8	15.4	17.8	17.8	12.8	10.1 -	7.4	21
22	8.4	8.5	8.3 -	10.4	11.2	12.7	15.5	17.8	17.6	12.8	10.1 -	7.3	22
23	8.4	8.4	8.3 -	10.4	11.2	12.7	15.7	17.8	17.3	12.7	10.2	7.3	23
24	8.3	8.4	8.4	10.4	11.2	12.7	15.9	17.7	17.1	12.7	10.2	7.2	24
25	8.2	8.4	8.4	10.4	11.3	12.9	16.2	17.6	16.8	12.7	10.2	7.2	25
26	8.1	8.4	8.5	10.5	11.3	12.8	16.5	17.5	16.6	12.5	10.2	7.1	26
27	8.0	8.4	8.5	10.5	11.4	12.9	16.7	17.5	16.4	12.4	10.2	7.0	27
28	7.9	8.5	8.5	10.6 +	11.4	12.9	16.8	17.5	16.2	12.3	10.2	6.9	28
29	7.8	8.5	8.6	10.6 +	11.4	13.0	16.9	17.6	16.1	12.2 -	10.2	6.8 -	29
30	7.8	8.5	8.6	10.5	11.5	13.1 +	17.1	17.8	16.0 -	12.2 -	10.2	6.8 -	30
31	7.7 -	8.7 +			11.6 +		17.2 +	18.1 +		12.2 -		6.9	31
Monatsmittel	8.4	8.3	8.4	10.1	10.8	12.6	15.0	17.5	17.7 +	13.9	10.9	8.2 -	
Maximum	9.6	8.6 -	8.7	10.6	11.6	13.6	17.3	18.2	18.6 +	15.9	12.2	10.2	
Datum	01.01	12.02	30.03	27.04	30.05	25.06	31.07	31.08	03.09	01.10	01.11	01.12	
Minimum	7.7	7.6	8.2	8.7	10.1	11.6	13.0	17.1 +	15.9	12.2	10.1	6.8 -	
Datum	30.01	01.02	08.03	01.04	05.05	01.06	01.07	15.08	30.09	28.10	20.11	29.12	
Amplitude	1.9	1.0	0.5	1.9	1.5	2.0	4.3	1.1	2.7	3.7	2.1	3.4	
Jahr 2016	Mittel	11.8 °C		Maximum	18.6 (03.Sep)		Minimum	6.8 (29.Dez)		Amplitude	11.8 °C		



Periode	2005 - 2016												
Monatsmittel	7.5	6.8 -	7.8	9.9	12.4	14.5	16.5	16.8 +	15.7	13.4	10.7	8.6	
Maximum	9.6	8.7 -	9.6	13.4	16.8	17.2	20.4 +	19.8	19.1	16.0	13.0	11.4	
Jahr	2016	2015	2014	2007	2011	2014	2015	2015	2011	2009	2014	2015	
Minimum	4.0	3.9 -	5.7	7.3	9.5	10.7	13.0	13.1 +	12.8	10.1	7.1	5.4	
Jahr	2009	2012	2012	2008	2008	2013	2016	2007	2008	2010	2007	2007	
Amplitude	2.8 -	3.8	3.7	4.9	4.5	3.9	5.2 +	4.0	4.2	4.8	3.2	3.4	
Jahr	2013	2012	2012	2007	2009	2014	2015	2011	2011	2009	2013	2016	
Periode	Mittel	11.7 °C		Maximum	20.4 (26.Jul 2015)		Minimum	3.9 (18.Feb 2012)		Amplitude	16.5 °C		

Darstellung der letzten 12 Jahre

