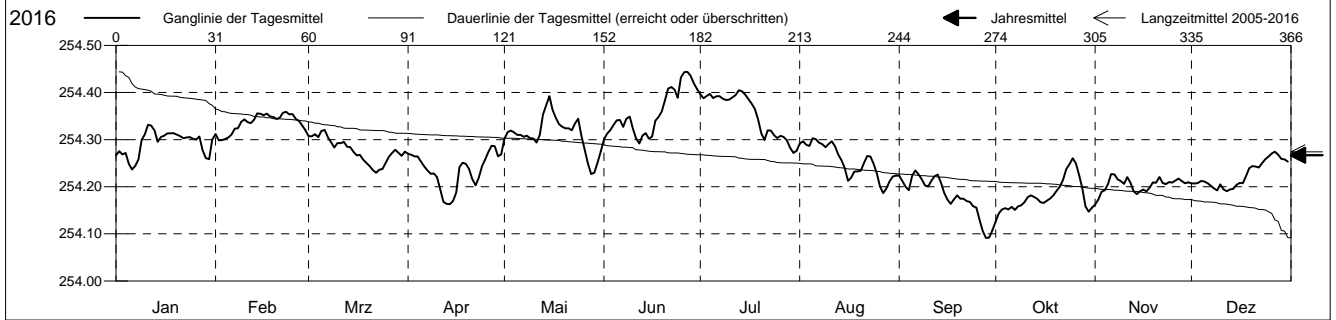


**Grundwasserstände**

Birstal  
 Birsfelden 17.J.8 Swissterminal  
 Abstichpunkt: 0.00 m ü.M.  
 OK Terrain: 0.00 m ü.M.

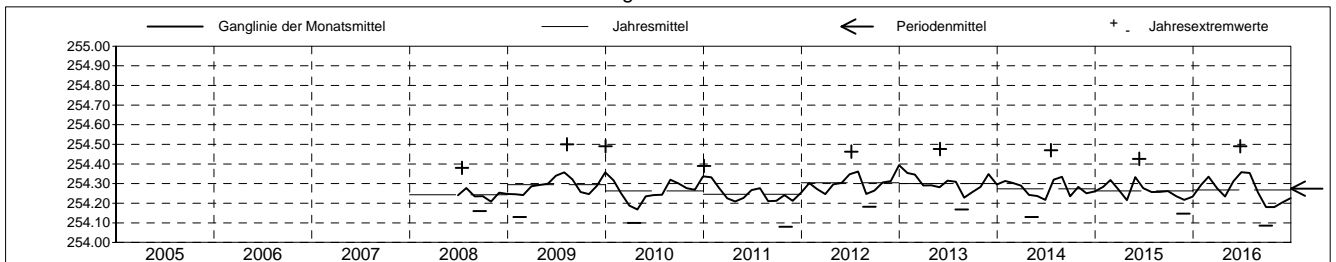
**Amt für Umweltschutz und Energie**  
**Kanton Basel-Landschaft**  
 Koordinaten: 0.00 / 0.00

2016	Januar	Februar	März	April	Mai	Juni	Juli	August	September	Oktober	November	Dezember	
1	254.27	254.31	254.31	254.27	254.30	254.30	254.40	254.29	254.22	254.13 -	254.16 -	254.21	1
2	254.28	254.30 -	254.31	254.27	254.32	254.31	254.39	254.30 +	254.21	254.14	254.17	254.21	2
3	254.27	254.30 -	254.31	254.26	254.32	254.32	254.39	254.29	254.20	254.15	254.19	254.21	3
4	254.27	254.30 -	254.31	254.26	254.32	254.33	254.40	254.29	254.19	254.15	254.19	254.21	4
5	254.25	254.30 -	254.32 +	254.25	254.31	254.34	254.39	254.30 +	254.22	254.15	254.21	254.21	5
Tagesmittel													
6	254.24 -	254.31	254.32 +	254.24	254.31	254.34	254.39	254.30 +	254.23 +	254.16	254.23 +	254.21	6
7	254.24 -	254.32	254.30	254.23	254.31	254.33	254.39	254.29	254.23 +	254.15	254.23 +	254.20	7
8	254.26	254.32	254.29	254.23	254.31	254.34	254.39	254.29	254.22	254.16	254.22	254.20	8
9	254.30	254.34	254.28	254.23	254.30	254.35	254.38	254.28	254.20	254.16	254.21	254.19 -	9
10	254.31	254.34	254.29	254.22	254.30	254.32	254.38	254.29	254.20	254.17	254.21	254.21	10
11	254.33 +	254.34	254.29	254.19	254.29	254.30	254.39	254.30 +	254.21	254.18	254.22	254.19 -	11
12	254.33 +	254.33	254.29	254.17	254.31	254.29 -	254.39	254.29	254.22	254.18	254.21	254.19 -	12
13	254.32	254.34	254.29	254.16 -	254.35	254.31	254.41 +	254.27	254.23 +	254.18	254.19	254.19 -	13
14	254.30	254.36 +	254.28	254.16 -	254.37	254.31	254.40	254.26	254.21	254.17	254.18	254.20	14
Max. +	254.31	254.36 +	254.27	254.17	254.39 +	254.30	254.40	254.24	254.19	254.17	254.19	254.20	15
16	254.31	254.35	254.27	254.19	254.36	254.31	254.39	254.21	254.17	254.17	254.19	254.21	16
17	254.31	254.36 +	254.27	254.24	254.35	254.34	254.38	254.22	254.16	254.17	254.19	254.21	17
18	254.31	254.35	254.26	254.25	254.33	254.35	254.37	254.23	254.17	254.18	254.20	254.22	18
19	254.31	254.35	254.25	254.25	254.33	254.36	254.34	254.23	254.18	254.18	254.21	254.24	19
Min. -	254.31	254.34	254.24	254.24	254.32	254.38	254.31	254.23	254.17	254.19	254.21	254.24	20
21	254.31	254.35	254.24	254.22	254.32	254.41	254.30	254.25	254.17	254.20	254.22	254.24	21
22	254.30	254.36 +	254.23 -	254.20	254.32	254.41	254.32	254.27	254.17	254.21	254.21	254.24	22
23	254.30	254.36 +	254.24	254.22	254.33	254.41	254.32	254.26	254.17	254.24	254.21	254.25	23
24	254.31	254.35	254.24	254.24	254.34	254.39	254.31	254.25	254.16	254.25	254.21	254.26	24
25	254.30	254.35	254.25	254.26	254.31	254.43	254.30	254.23	254.16	254.26 +	254.21	254.26	25
26	254.30	254.34	254.26	254.27	254.28	254.44 +	254.31	254.20	254.13	254.25	254.21	254.27 +	26
27	254.31	254.34	254.27	254.29 +	254.25	254.44 +	254.31	254.19 -	254.11	254.23	254.22	254.27 +	27
28	254.28	254.33	254.28	254.29 +	254.23 -	254.44 +	254.30	254.20	254.09 -	254.20	254.21	254.27 +	28
29	254.26	254.32	254.27	254.26	254.23 -	254.42	254.28	254.21	254.09 -	254.16	254.21	254.26	29
30	254.26		254.27	254.27	254.25	254.41	254.27 -	254.22	254.11	254.15	254.21	254.26	30
31	254.30		254.27		254.27		254.28	254.22		254.16		254.25	31
Monatsmittel	254.29	254.34	254.28	254.23	254.31	254.36 +	254.35	254.25	254.18 -	254.18 -	254.20	254.23	
Maximum	254.34	254.38	254.32	254.30	254.42	254.49 +	254.41	254.31	254.24	254.28	254.23 -	254.28	
Datum	11.01	23.02	06.03	26.04	14.05	25.06	13.07	05.08	06.09	25.10	06.11	27.12	
Amplitude	0.11	0.09	0.10	0.14	0.19	0.21	0.14	0.13	0.15	0.16	0.08	0.10	
Jahr 2016	Mittel	254.27 m ü.M.		Maximum	254.49 (25.Jun)		Minimum	254.09 (28.Sep)		Amplitude		0.40 m	



Periode	2005 - 2016												
Monatsmittel	254.30	254.29	254.26	254.24 -	254.28	254.29	254.31 +	254.27	254.24 -	254.25	254.26	254.29	
Maximum	254.49	254.41	254.37 -	254.38	254.42	254.49	254.47	254.50 +	254.37 -	254.40	254.43	254.49	
Jahr	2010	2013	2015	2012	2013	2016	2014	2009	2010	2012	2012	2009	
Minimum	254.20 +	254.13	254.14	254.10	254.13	254.15	254.17	254.16	254.09	254.12	254.08 -	254.18	
Jahr	2009	2009	2010	2010	2014	2014	2011	2011	2016	2016	2011	2015	
Amplitude	0.25	0.16	0.15 -	0.18	0.20	0.26 +	0.23	0.23	0.16	0.18	0.21	0.20	
Jahr	2010	2009	2015	2013	2013	2015	2014	2009	2008	2014	2011	2009	
Periode	Mittel	254.27 m ü.M.		Maximum	254.50 (10.Aug 2009)		Minimum	254.08 (04.Nov 2011)		Amplitude		0.42 m	

Darstellung der letzten 12 Jahre

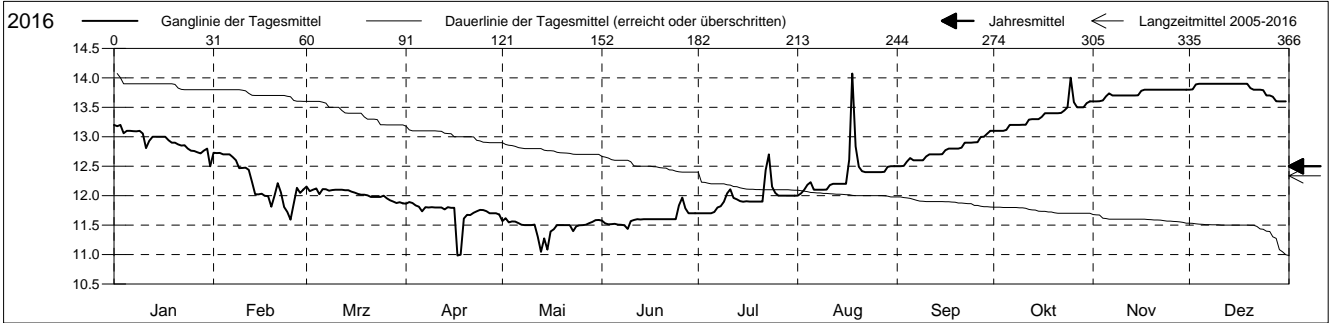


**Grundwassertemperatur**

Birstal  
 Birsfelden 17.J.8 Swissterminal  
 Abstichpunkt: 0.00 m ü.M.  
 OK Terrain: 0.00 m ü.M.

**Amt für Umweltschutz und Energie**  
**Kanton Basel-Landschaft**  
 Koordinaten: 0.00 / 0.00

2016	Januar	Februar	März	April	Mai	Juni	Juli	August	September	Oktober	November	Dezember	
1	13.2 +	12.7 +	12.2 +	11.9 +	11.6 +	11.6	11.7 -	12.0 -	12.5 -	13.1 -	13.6 -	13.8	1
2	13.2 +	12.7 +	12.1	11.9 +	11.6 +	11.5	11.7 -	12.0 -	12.5 -	13.1 -	13.6 -	13.8	2
3	13.2 +	12.7 +	12.1	11.9 +	11.5	11.5	11.7 -	12.1	12.5 -	13.1 -	13.6 -	13.9 +	3
4	13.1	12.7 +	12.1	11.8	11.6 +	11.5	11.7 -	12.2	12.6	13.1 -	13.6 -	13.9 +	4
5	13.1	12.7 +	12.0	11.8	11.6 +	11.5	11.7 -	12.2	12.6	13.1 -	13.7	13.9 +	5
Tagesmittel													
6	13.1	12.7 +	12.1	11.7	11.5	11.5	11.7 -	12.1	12.6	13.2	13.7	13.9 +	6
7	13.1	12.7 +	12.1	11.8	11.5	11.5	11.8	12.1	12.6	13.2	13.7	13.9 +	7
8	13.1	12.6	12.1	11.8	11.5	11.5	11.8	12.1	12.6	13.2	13.7	13.9 +	8
9	13.1	12.5	12.1	11.8	11.5	11.4 -	11.9	12.1	12.6	13.2	13.7	13.9 +	9
10	13.1	12.5	12.1	11.8	11.5	11.6	12.0	12.1	12.7	13.2	13.7	13.9 +	10
11	12.8	12.5	12.1	11.8	11.5	11.6	12.1	12.2	12.7	13.2	13.7	13.9 +	11
12	12.9	12.4	12.1	11.8	11.3	11.6	12.0	12.2	12.7	13.3	13.7	13.9 +	12
13	13.0	12.2	12.1	11.8	11.0 -	11.6	11.9	12.2	12.7	13.3	13.7	13.9 +	13
14	13.0	12.0	12.1	11.8	11.3	11.6	11.9	12.2	12.7	13.3	13.7	13.9 +	14
15	13.0	12.0	12.1	11.8	11.1	11.6	11.9	12.2	12.7	13.3	13.7	13.9 +	15
Max. +													
16	13.0	12.0	12.1	11.8	11.4	11.6	11.9	12.2	12.8	13.3	13.8 +	13.9 +	16
17	13.0	12.0	12.0	11.0 -	11.4	11.6	11.9	12.6	12.8	13.4	13.8 +	13.9 +	17
18	12.9	12.0	12.0	11.0 -	11.5	11.6	11.9	14.1 +	12.8	13.4	13.8 +	13.9 +	18
19	12.9	11.8	12.0	11.6	11.5	11.6	11.9	12.8	12.8	13.4	13.8 +	13.9 +	19
20	12.9	12.0	12.0	11.7	11.5	11.6	11.9	12.5	12.8	13.4	13.8 +	13.8	20
Min. -													
21	12.9	12.2	12.0	11.7	11.5	11.6	11.9	12.4	12.8	13.4	13.8 +	13.8	21
22	12.9	12.1	12.0	11.7	11.5	11.6	12.4	12.4	12.9	13.4	13.8 +	13.8	22
23	12.9	11.8	12.0	11.7	11.4	11.6	12.7 +	12.4	12.9	13.4	13.8 +	13.8	23
24	12.8	11.7	12.0	11.8	11.5	11.6	12.2	12.4	12.9	13.5	13.8 +	13.8	24
25	12.8	11.6 -	12.0	11.8	11.5	11.8	12.0	12.4	12.9	14.0 +	13.8 +	13.7	25
26	12.8	11.9	12.0	11.7	11.5	12.0 +	12.0	12.4	12.9	13.6	13.8 +	13.7	26
27	12.7	12.1	11.9 -	11.7	11.5	11.8	12.0	12.4	13.0	13.5	13.8 +	13.7	27
28	12.7	12.0	11.9 -	11.7	11.5	11.7	12.0	12.4	13.0	13.5	13.8 +	13.6 -	28
29	12.8	12.1	11.9 -	11.7	11.6 +	11.7	12.0	12.5	13.1 +	13.5	13.8 +	13.6 -	29
30	12.8	11.9 -	11.9 -	11.7	11.6 +	11.7	12.0	12.5	13.1 +	13.6	13.8 +	13.6 -	30
31	12.5 -		11.9 -		11.6 +		12.0	12.5		13.6		13.6 -	31
Monatsmittel	12.9	12.2	12.0	11.7	11.5 -	11.6	11.9	12.4	12.8	13.4	13.7	13.8 +	
Maximum	13.2	12.8	12.2	11.9	11.7 -	12.6	15.0	15.7 +	13.1	14.5	14.0	13.9	
Datum	01.01	01.02	01.03	01.04	02.05	25.06	22.07	17.08	29.09	25.10	06.11	02.12	
Minimum	12.1	11.4	11.8	10.7 -	10.8	11.4	11.7	12.0	12.5	13.1	13.6 +	13.6 +	
Datum	31.01	23.02	02.03	18.04	13.05	08.06	01.07	01.08	01.09	01.10	01.11	27.12	
Amplitude	1.1	1.4	0.4	1.2	0.9	1.2	3.3	3.7	0.6	1.4	0.4	0.3	
Jahr 2016	Mittel	12.5 °C		Maximum	15.7 (17.Aug)		Minimum	10.7 (18.Apr)		Amplitude	5.0 °C		



Periode	2005 - 2016												
Monatsmittel	12.9	12.4	12.0	11.6	11.4 -	11.4 -	11.7	12.1	12.6	13.1	13.3 +	13.3 +	
Maximum	13.5	13.1	12.8	12.4	12.0 -	14.1	15.0	15.7 +	14.9	14.5	14.0	13.9	
Jahr	2009	2009	2012	2012	2012	2015	2016	2016	2015	2014	2016	2016	
Minimum	11.8	10.8	10.8	10.7	10.2 -	11.0	11.0	11.4	11.9	12.5	12.8 +	12.5	
Jahr	2014	2011	2014	2016	2013	2008	2008	2008	2008	2008	2010	2013	
Amplitude	1.1	1.4	1.1	1.4	1.2	2.5	3.3	3.7 +	2.3	1.6	0.8	0.6 -	
Jahr	2016	2016	2014	2012	2013	2015	2016	2016	2015	2014	2013	2009	
Periode	Mittel	12.3 °C		Maximum	15.7 (17.Aug 2016)		Minimum	10.2 (02.Mai 2013)		Amplitude	5.5 °C		

Darstellung der letzten 12 Jahre

