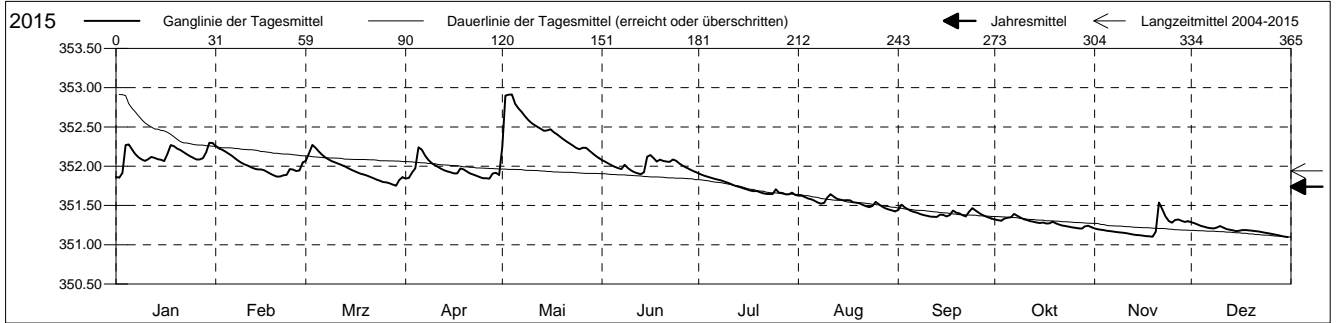


Grundwasserstände

Ergolztal
 Sissach 71.P.11 ARA Ergolz 1
 Abstichpunkt: 0.00 m ü.M.
 OK Terrain: 0.00 m ü.M.

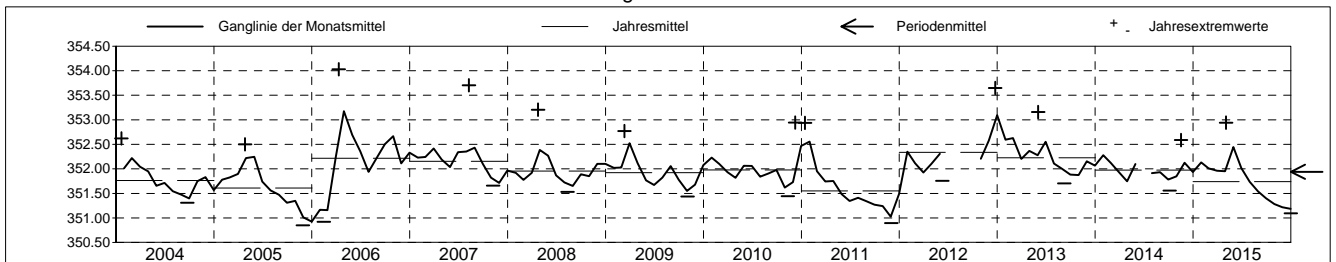
Amt für Umweltschutz und Energie
Kanton Basel-Landschaft
 Koordinaten: 0.00 / 0.00

2015		Januar	Februar	März	April	Mai	Juni	Juli	August	September	Oktober	November	Dezember	
1		351.86	352.26 +	352.07	351.84 -	352.25	352.08	351.91 +	351.63	351.44	351.32	351.21	351.29 +	1
2		351.85 -	352.23	352.16	351.85	352.90	352.06	351.89	351.63	351.51 +	351.31	351.20	351.27	2
3		351.91	352.21	352.27 +	351.92	352.91 +	352.03	351.88	351.61	351.48	351.30	351.19	351.26	3
4		352.27	352.18	352.23	351.97	352.91 +	352.01	351.86	351.59	351.45	351.33	351.18	351.24	4
5	Tagesmittel	352.28	352.16	352.19	352.24 +	352.79	351.99	351.85	351.58	351.43	351.34	351.18	351.23	5
6		352.21	352.13	352.15	352.21	352.74	351.98	351.84	351.56	351.42	351.35	351.17	351.22	6
7		352.15	352.10	352.11	352.14	352.69	351.96	351.83	351.54	351.41	351.39 +	351.17	351.21	7
8		352.11	352.07	352.09	352.08	352.64	352.02	351.82	351.52	351.39	351.37	351.16	351.21	8
9		352.08	352.04	352.07	352.04	352.59	351.98	351.80	351.53	351.38	351.34	351.16	351.22	9
10		352.07	352.02	352.05	352.01	352.55	351.95	351.79	351.60	351.37	351.33	351.15	351.24	10
11		352.09	352.00	352.03	351.99	352.52	351.93	351.77	351.64 +	351.36	351.31	351.15	351.22	11
12		352.12	351.99	352.02	351.97	352.50	351.91	351.76	351.61	351.36	351.30	351.14	351.20	12
13		352.10	351.97	352.00	351.95	352.47	351.90 -	351.74	351.58	351.35	351.29	351.13	351.19	13
14		352.09	351.96	351.98	351.93	352.45	351.92	351.73	351.57	351.38	351.28	351.12	351.18	14
15	Max. +	352.08	351.96	351.96	351.92	352.46	352.12	351.72	351.57	351.38	351.28	351.12	351.17	15
16		352.06	351.95	351.94	351.91	352.47	352.14 +	351.71	351.57	351.36	351.28	351.12	351.18	16
17		352.16	351.93	351.92	351.91	352.43	352.10	351.69	351.57	351.38	351.27	351.11	351.19	17
18		352.27	351.90	351.90	351.97	352.40	352.06	351.68	351.54	351.44	351.27	351.11	351.19	18
19		352.25	351.88	351.89	351.96	352.37	352.08	351.68	351.53	351.41	351.29	351.10 -	351.18	19
20	Min. -	352.22	351.87 -	351.88	351.93	352.34	352.07	351.67	351.53	351.40	351.27	351.17	351.18	20
21		352.21	351.87 -	351.86	351.91	352.31	352.06	351.66	351.51	351.38	351.25	351.54 +	351.17	21
22		352.18	351.88	351.85	351.89	352.29	352.06	351.65	351.49	351.36	351.24	351.45	351.17	22
23		352.15	351.89	351.83	351.88	352.26	352.08	351.65	351.48	351.42	351.24	351.36	351.16	23
24		352.13	351.96	351.81	351.86	352.23	352.07	351.65	351.49	351.47	351.23	351.30	351.15	24
25		352.11	351.96	351.80	351.85	352.21	352.03	351.71	351.55	351.44	351.22	351.28	351.15	25
26		352.09	351.94	351.79	351.85	352.23	352.01	351.66	351.52	351.41	351.22	351.32	351.14	26
27		352.09	351.94	351.78	351.84 -	352.24	351.99	351.66	351.49	351.38	351.21	351.32	351.13	27
28		352.10	352.05	351.76	351.91	352.20	351.96	351.64	351.46	351.36	351.20 -	351.30	351.12	28
29		352.18		351.75 -	351.92	352.16	351.95	351.64	351.45	351.35	351.23	351.29	351.11	29
30		352.30 +		351.82	351.89	352.13	351.93	351.66	351.44	351.33 -	351.24	351.30	351.10 -	30
31		352.30 +		351.86		352.10 -		351.63 -	351.43 -		351.22		351.10 -	31
Monatsmittel		352.13	352.01	351.96	351.95	352.44 +	352.01	351.74	351.54	351.40	351.28	351.22	351.19 -	
Maximum		352.32	352.28	352.28	352.26	352.94 +	352.16	351.92	351.65	351.52	351.40	351.57	351.29 -	
Datum		30.01	01.02	03.03	05.04	03.05	15.06	01.07	11.08	02.09	07.10	21.11	01.12	
Amplitude		0.47	0.42	0.53	0.43	1.06	0.27	0.29	0.23	0.19	0.20	0.48	0.20	
Jahr 2015		Mittel	351.74 m ü.M.		Maximum	352.94 (03.Mai)		Minimum	351.09 (31.Dez)			Amplitude	1.85 m	



Periode		2004 - 2015												
Monatsmittel		352.11	352.01	352.06	352.15 +	352.11	351.97	351.81	351.82	351.75 -	351.76	351.77	351.93	
Maximum		353.11	352.93	352.93	354.03 +	352.94	353.16	352.71 -	353.70	353.90	353.30	353.35	353.65	
Jahr		2013	2013	2006	2006	2015	2013	2013	2007	2006	2006	2012	2012	
Minimum		350.96	350.92	351.22	351.63 +	351.36	351.24	351.22	351.19	351.17	351.12	350.85 -	350.85 -	
Jahr		2006	2006	2006	2011	2011	2011	2011	2011	2005	2011	2005	2005	
Amplitude		1.22	0.56 -	1.71	1.41	1.06	0.94	0.94	1.64	1.79 +	1.24	1.11	1.35	
Jahr		2004	2013	2006	2006	2015	2013	2009	2007	2006	2004	2012	2012	
Periode		Mittel	351.94 m ü.M.		Maximum	354.03 (10.Apr 2006)		Minimum	350.85 (28.Nov 2005)			Amplitude	3.18 m	

Darstellung der letzten 12 Jahre

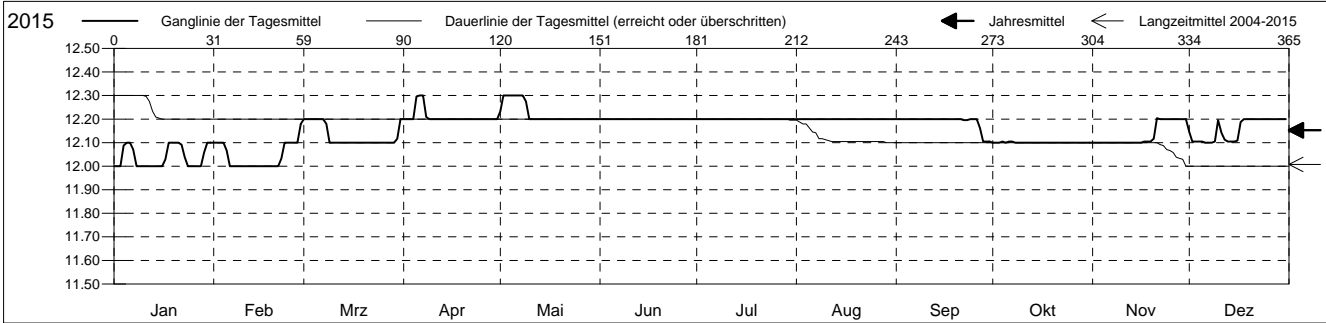


Grundwassertemperatur

Ergolztal
 Sissach 71.P.11 ARA Ergolz 1
 Abstichpunkt: 0.00 m ü.M.
 OK Terrain: 0.00 m ü.M.

Amt für Umweltschutz und Energie
Kanton Basel-Landschaft
 Koordinaten: 0.00 / 0.00

2015	Januar	Februar	März	April	Mai	Juni	Juli	August	September	Oktober	November	Dezember	
1	12.0 -	12.1	12.2 +	12.2 -	12.2 -	12.2 +	12.2 +	12.2 +	12.2 +	12.1 +	12.1 -	12.1 -	1
2	12.0 -	12.1	12.2 +	12.2 -	12.3 +	12.2 +	12.2 +	12.2 +	12.2 +	12.1 +	12.1 -	12.1 -	2
3	12.0 -	12.1	12.2 +	12.2 -	12.3 +	12.2 +	12.2 +	12.2 +	12.2 +	12.1 +	12.1 -	12.1 -	3
4	12.1 +	12.1	12.2 +	12.2 -	12.3 +	12.2 +	12.2 +	12.2 +	12.2 +	12.1 +	12.1 -	12.1 -	4
5	12.1 +	12.1	12.2 +	12.3 +	12.3 +	12.2 +	12.2 +	12.2 +	12.2 +	12.1 +	12.1 -	12.1 -	5
Tagesmittel													
6	12.1 +	12.0 -	12.2 +	12.3 +	12.3 +	12.2 +	12.2 +	12.2 +	12.2 +	12.1 +	12.1 -	12.1 -	6
7	12.1 +	12.0 -	12.2 +	12.3 +	12.3 +	12.2 +	12.2 +	12.2 +	12.2 +	12.1 +	12.1 -	12.1 -	7
8	12.0 -	12.0 -	12.2 +	12.2 -	12.3 +	12.2 +	12.2 +	12.2 +	12.2 +	12.1 +	12.1 -	12.1 -	8
9	12.0 -	12.0 -	12.1 -	12.2 -	12.3 +	12.2 +	12.2 +	12.2 +	12.2 +	12.1 +	12.1 -	12.1 -	9
10	12.0 -	12.0 -	12.1 -	12.2 -	12.2 -	12.2 +	12.2 +	12.2 +	12.2 +	12.1 +	12.1 -	12.2 +	10
11	12.0 -	12.0 -	12.1 -	12.2 -	12.2 -	12.2 +	12.2 +	12.2 +	12.2 +	12.1 +	12.1 -	12.1 -	11
12	12.0 -	12.0 -	12.1 -	12.2 -	12.2 -	12.2 +	12.2 +	12.2 +	12.2 +	12.1 +	12.1 -	12.1 -	12
13	12.0 -	12.0 -	12.1 -	12.2 -	12.2 -	12.2 +	12.2 +	12.2 +	12.2 +	12.1 +	12.1 -	12.1 -	13
14	12.0 -	12.0 -	12.1 -	12.2 -	12.2 -	12.2 +	12.2 +	12.2 +	12.2 +	12.1 +	12.1 -	12.1 -	14
15	12.0 -	12.0 -	12.1 -	12.2 -	12.2 -	12.2 +	12.2 +	12.2 +	12.2 +	12.1 +	12.1 -	12.1 -	15
Max. +													
16	12.0 -	12.0 -	12.1 -	12.2 -	12.2 -	12.2 +	12.2 +	12.2 +	12.2 +	12.1 +	12.1 -	12.1 -	16
17	12.0 -	12.0 -	12.1 -	12.2 -	12.2 -	12.2 +	12.2 +	12.2 +	12.2 +	12.1 +	12.1 -	12.2 +	17
18	12.1 +	12.0 -	12.1 -	12.2 -	12.2 -	12.2 +	12.2 +	12.2 +	12.2 +	12.1 +	12.1 -	12.2 +	18
19	12.1 +	12.0 -	12.1 -	12.2 -	12.2 -	12.2 +	12.2 +	12.2 +	12.2 +	12.1 +	12.1 -	12.2 +	19
20	12.1 +	12.0 -	12.1 -	12.2 -	12.2 -	12.2 +	12.2 +	12.2 +	12.2 +	12.1 +	12.1 -	12.2 +	20
Min. -													
21	12.1 +	12.0 -	12.1 -	12.2 -	12.2 -	12.2 +	12.2 +	12.2 +	12.2 +	12.1 +	12.2 +	12.2 +	21
22	12.1 +	12.0 -	12.1 -	12.2 -	12.2 -	12.2 +	12.2 +	12.2 +	12.2 +	12.1 +	12.2 +	12.2 +	22
23	12.0 -	12.1	12.1 -	12.2 -	12.2 -	12.2 +	12.2 +	12.2 +	12.2 +	12.1 +	12.2 +	12.2 +	23
24	12.0 -	12.1	12.1 -	12.2 -	12.2 -	12.2 +	12.2 +	12.2 +	12.2 +	12.1 +	12.2 +	12.2 +	24
25	12.0 -	12.1	12.1 -	12.2 -	12.2 -	12.2 +	12.2 +	12.2 +	12.2 +	12.1 +	12.2 +	12.2 +	25
26	12.0 -	12.1	12.1 -	12.2 -	12.2 -	12.2 +	12.2 +	12.2 +	12.2 +	12.1 +	12.2 +	12.2 +	26
27	12.0 -	12.1	12.1 -	12.2 -	12.2 -	12.2 +	12.2 +	12.2 +	12.2 +	12.1 +	12.2 +	12.2 +	27
28	12.0 -	12.2 +	12.1 -	12.2 -	12.2 -	12.2 +	12.2 +	12.2 +	12.1 -	12.1 +	12.2 +	12.2 +	28
29	12.1 +		12.1 -	12.2 -	12.2 -	12.2 +	12.2 +	12.2 +	12.1 -	12.1 +	12.2 +	12.2 +	29
30	12.1 +		12.1 -	12.2 -	12.2 -	12.2 +	12.2 +	12.2 +	12.1 -	12.1 +	12.2 +	12.2 +	30
31	12.1 +		12.2 +		12.2 -		12.2 +	12.2 +		12.1 +		12.2 +	31
Monatsmittel	12.0 -	12.0 -	12.1	12.2 +	12.2 +	12.2 +	12.2 +	12.2 +	12.2 +	12.1	12.1	12.2 +	
Maximum	12.1 -	12.2	12.2	12.3 +	12.3 +	12.2	12.2	12.2	12.2	12.2	12.3 +	12.2	
Datum	04.01	28.02	01.03	05.04	01.05	01.06	01.07	01.08	01.09	04.10	21.11	01.12	
Minimum	12.0 -	12.0 -	12.1	12.2 +	12.2 +	12.2 +	12.2 +	12.2 +	12.1	12.1	12.1	12.1	
Datum	01.01	05.02	08.03	01.04	01.05	01.06	01.07	01.08	22.09	01.10	01.11	01.12	
Amplitude	0.1	0.2	0.1	0.1	0.1	0.0 +	0.0 +	0.0 +	0.1	0.1	0.2	0.1	
Jahr 2015	Mittel	12.2 °C		Maximum	12.3 (05.Apr)		Minimum	12.0 (01.Jan)			Amplitude	0.3 °C	



Periode	2004 - 2015												
Monatsmittel	12.0	12.0	12.1 +	12.1 +	12.1 +	12.1 +	12.0	12.0	12.0	11.9 -	11.9 -	11.9 -	
Maximum	12.3	12.4	12.4	12.4	12.6 +	12.3	12.2 -	12.2 -	12.2 -	12.2 -	12.3	12.3	
Jahr	2013	2013	2013	2008	2013	2008	2008	2008	2015	2015	2015	2012	
Minimum	11.7 -	11.8	11.8	11.9 +	11.9 +	11.9 +	11.9 +	11.8	11.8	11.7 -	11.7 -	11.7 -	
Jahr	2007	2007	2010	2010	2010	2010	2009	2009	2009	2006	2006	2006	
Amplitude	0.2	0.2	0.2	0.1 -	0.5 +	0.1 -	0.2	0.1 -	0.2	0.1 -	0.2	0.2	
Jahr	2007	2012	2007	2009	2013	2008	2013	2011	2014	2008	2015	2012	
Periode	Mittel	12.0 °C		Maximum	12.6 (17.Mai 2013)		Minimum	11.7 (25.Okt 2006)			Amplitude	0.9 °C	

Darstellung der letzten 12 Jahre

