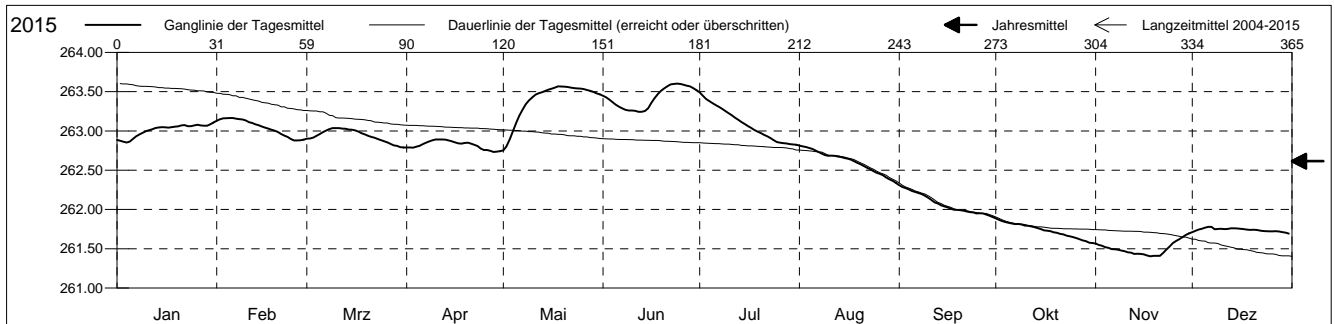


**Grundwasserstände**

Ergolzthal  
 Pratteln 41.J.15 Löli  
 Abstichpunkt: 0.00 m ü.M.  
 OK Terrain: 0.00 m ü.M.

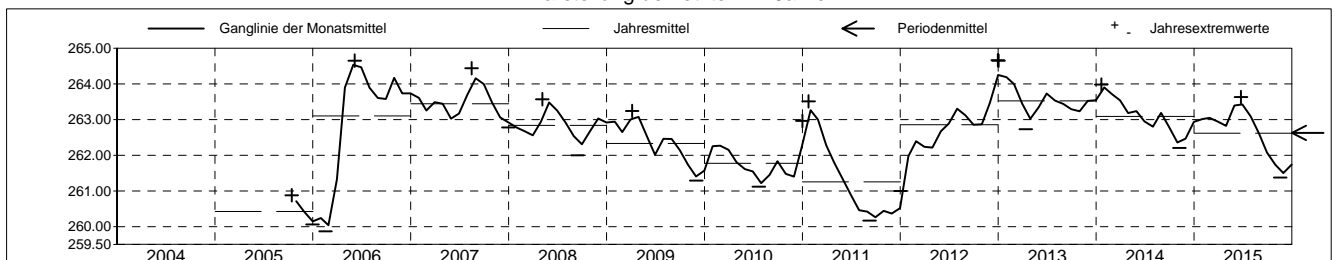
**Amt für Umweltschutz und Energie**  
**Kanton Basel-Landschaft**  
 Koordinaten: 0.00 / 0.00

2015	Januar	Februar	März	April	Mai	Juni	Juli	August	September	Oktober	November	Dezember	
1	262.89	263.13	262.90	262.79	262.75 -	263.45	263.49 +	262.81 +	262.31 +	261.89 +	261.57	261.71	1
2	262.87	263.15	262.90	262.79	262.80	263.43	263.45	262.80	262.29	261.87	261.55	261.73	2
3	262.86	263.16	262.91	262.79	262.89	263.40	263.41	262.80	262.27	261.85	261.54	261.74	3
4	262.85 -	263.16	262.94	262.80	263.00	263.37	263.38	262.78	262.25	261.84	261.52	261.75	4
5	262.86	263.17 +	262.96	262.81	263.10	263.33	263.35	262.77	262.23	261.83	261.51	261.77	5
Tagesmittel													
6	262.90	263.16	262.98	262.83	263.19	263.31	263.33	262.75	262.22	261.82	261.50	261.78 +	6
7	262.93	263.16	263.00	262.85	263.27	263.29	263.31	262.73	262.21	261.81	261.49	261.78 +	7
8	262.96	263.15	263.02	262.87	263.34	263.27	263.28	262.71	262.20	261.82	261.49	261.75	8
9	262.98	263.15	263.04 +	262.88	263.39	263.26	263.25	262.69	262.17	261.81	261.48	261.75	9
10	263.00	263.13	263.04 +	262.89 +	263.43	263.26	263.23	262.68	262.15	261.79	261.47	261.75	10
11	263.01	263.11	263.03	262.89 +	263.46	263.26	263.20	262.68	262.12	261.79	261.45	261.75	11
12	263.02	263.10	263.03	262.89 +	263.48	263.24 -	263.17	262.68	262.09	261.79	261.45	261.75	12
13	263.04	263.09	263.03	262.89 +	263.49	263.24 -	263.14	262.67	262.08	261.77	261.43	261.76	13
14	263.04	263.07	263.02	262.88	263.51	263.25	263.11	262.67	262.05	261.76	261.43	261.76	14
Max. +	263.05	263.06	263.02	262.87	263.52	263.29	263.09	262.66	262.04	261.75	261.43	261.76	15
16	263.05	263.04	263.01	262.85	263.54	263.36	263.06	262.65	262.03	261.73	261.43	261.75	16
17	263.04	263.03	262.99	262.84	263.55	263.42	263.04	262.63	262.01	261.73	261.41	261.75	17
18	263.05	263.02	262.97	262.84	263.57 +	263.47	263.01	262.61	262.00	261.72	261.40 -	261.74	18
19	263.05	263.00	262.96	262.85	263.57 +	263.51	262.99	262.59	261.99	261.71	261.41	261.74	19
Min. -	263.06	262.99	262.94	262.85	263.56	263.54	262.97	262.58	261.99	261.70	261.41	261.74	20
21	263.07	262.96	262.92	262.84	263.56	263.57	262.95	262.55	261.98	261.69	261.41	261.74	21
22	263.07	262.94	262.91	262.82	263.55	263.59	262.93	262.53	261.98	261.68	261.45	261.73	22
23	263.06	262.92	262.90	262.81	263.55	263.60 +	262.91	262.51	261.97	261.67	261.49	261.73	23
24	263.06	262.90	262.88	262.78	263.54	263.60 +	262.88	262.49	261.96	261.66	261.53	261.72	24
25	263.07	262.88 -	262.87	262.76	263.54	263.60 +	262.86	262.47	261.95	261.65	261.57	261.72	25
26	263.08	262.88 -	262.85	262.76	263.53	263.59	262.85	262.45	261.95	261.64	261.60	261.72	26
27	263.07	262.88 -	262.83	262.75	263.52	263.58	262.84	262.43	261.95	261.62	261.62	261.72	27
28	263.07	262.89	262.82	262.73 -	263.51	263.57	262.84	262.41	261.94	261.61	261.65	261.72	28
29	263.07		262.81	262.74	263.50	263.55	262.83	262.38	261.92	261.60	261.68	261.71	29
30	263.08		262.79 -	262.74	263.48	263.52	262.83	262.36	261.90 -	261.58	261.69 +	261.70	30
31	263.11 +		262.79 -		263.47		262.82 -	262.34 -		261.57 -		261.69 -	31
Monatsmittel	263.01	263.05	262.94	262.82	263.39	263.42 +	263.09	262.61	262.07	261.73	261.50 -	261.74	
Maximum	263.14	263.19	263.06	262.92	263.59	263.63 +	263.50	262.82	262.33	261.91	261.71 -	261.80	
Datum	31.01	05.02	10.03	12.04	18.05	24.06	01.07	01.08	01.09	01.10	30.11	07.12	
Amplitude	0.31	0.34	0.30	0.21	0.88	0.42	0.68	0.51	0.45	0.37	0.33	0.13	
Jahr 2015	Mittel	262.61 m ü.M.		Maximum	263.63 (24.Jun)		Minimum	261.38 (18.Nov)		Amplitude	2.25 m		



Periode	2004 - 2015												
Monatsmittel	262.81	262.70	262.69	262.82	262.92 +	262.83	262.74	262.70	262.51	262.26	262.22 -	262.41	
Maximum	264.65	264.15	263.84 -	264.58	264.61	264.65	264.24	264.44	264.25	264.32	263.99	264.66 +	
Jahr	2013	2013	2013	2006	2006	2006	2006	2007	2007	2006	2006	2012	
Minimum	260.06	259.87 -	260.13	261.42 +	261.04	260.60	260.28	260.23	260.17	260.30	260.20	260.06	
Jahr	2006	2006	2006	2010	2011	2011	2011	2011	2011	2011	2005	2005	
Amplitude	1.52	0.76	2.60 +	1.89	0.88	0.75	0.74	0.74	0.67	0.59 -	0.74	1.34	
Jahr	2012	2011	2006	2006	2015	2013	2006	2007	2008	2012	2012	2010	
Periode	Mittel	262.63 m ü.M.		Maximum	264.66 (29.Dez 2012)		Minimum	259.87 (17.Feb 2006)		Amplitude	4.79 m		

Darstellung der letzten 12 Jahre

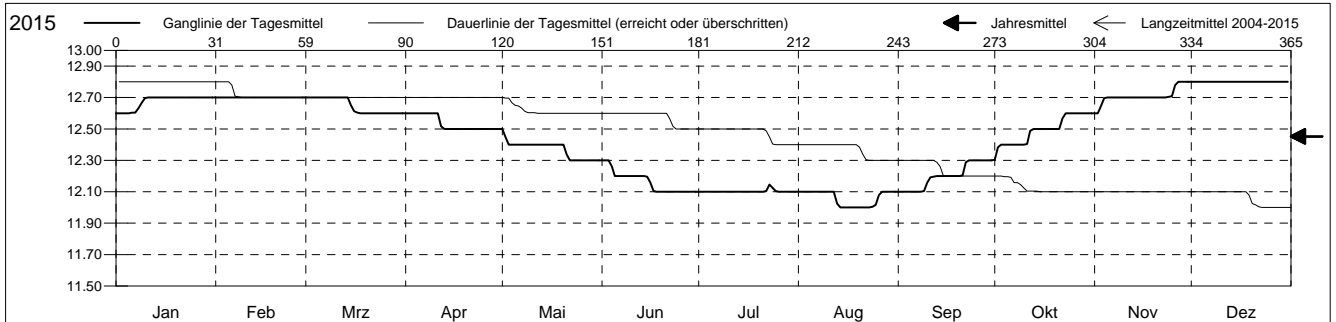


**Grundwassertemperatur**

Ergolzthal  
 Pratteln 41.J.15 Löli  
 Abstichpunkt: 0.00 m ü.M.  
 OK Terrain: 0.00 m ü.M.

**Amt für Umweltschutz und Energie**  
**Kanton Basel-Landschaft**  
 Koordinaten: 0.00 / 0.00

2015	Januar	Februar	März	April	Mai	Juni	Juli	August	September	Oktober	November	Dezember	
1	12.6 -	12.7 +	12.7 +	12.6 +	12.5 +	12.3 +	12.1 +	12.1 +	12.1 -	12.3 -	12.6 -	12.8 +	1
2	12.6 -	12.7 +	12.7 +	12.6 +	12.4	12.3 +	12.1 +	12.1 +	12.1 -	12.4	12.6 -	12.8 +	2
3	12.6 -	12.7 +	12.7 +	12.6 +	12.4	12.3 +	12.1 +	12.1 +	12.1 -	12.4	12.6 -	12.8 +	3
4	12.6 -	12.7 +	12.7 +	12.6 +	12.4	12.3 +	12.1 +	12.1 +	12.1 -	12.4	12.7	12.8 +	4
5	12.6 -	12.7 +	12.7 +	12.6 +	12.4	12.2	12.1 +	12.1 +	12.1 -	12.4	12.7	12.8 +	5
Tagesmittel													
6	12.6 -	12.7 +	12.7 +	12.6 +	12.4	12.2	12.1 +	12.1 +	12.1 -	12.4	12.7	12.8 +	6
7	12.6 -	12.7 +	12.7 +	12.6 +	12.4	12.2	12.1 +	12.1 +	12.1 -	12.4	12.7	12.8 +	7
8	12.6 -	12.7 +	12.7 +	12.6 +	12.4	12.2	12.1 +	12.1 +	12.1 -	12.4	12.7	12.8 +	8
9	12.7 +	12.7 +	12.7 +	12.6 +	12.4	12.2	12.1 +	12.1 +	12.1 -	12.4	12.7	12.8 +	9
10	12.7 +	12.7 +	12.7 +	12.6 +	12.4	12.2	12.1 +	12.1 +	12.2	12.4	12.7	12.8 +	10
11	12.7 +	12.7 +	12.7 +	12.6 +	12.4	12.2	12.1 +	12.1 +	12.2	12.4	12.7	12.8 +	11
12	12.7 +	12.7 +	12.7 +	12.5 -	12.4	12.2	12.1 +	12.1 +	12.2	12.5	12.7	12.8 +	12
13	12.7 +	12.7 +	12.7 +	12.5 -	12.4	12.2	12.1 +	12.0 -	12.2	12.5	12.7	12.8 +	13
14	12.7 +	12.7 +	12.7 +	12.5 -	12.4	12.2	12.1 +	12.0 -	12.2	12.5	12.7	12.8 +	14
15	12.7 +	12.7 +	12.6 -	12.5 -	12.4	12.2	12.1 +	12.0 -	12.2	12.5	12.7	12.8 +	15
Max. +													
16	12.7 +	12.7 +	12.6 -	12.5 -	12.4	12.2	12.1 +	12.0 -	12.2	12.5	12.7	12.8 +	16
17	12.7 +	12.7 +	12.6 -	12.5 -	12.4	12.1 -	12.1 +	12.0 -	12.2	12.5	12.7	12.8 +	17
18	12.7 +	12.7 +	12.6 -	12.5 -	12.4	12.1 -	12.1 +	12.0 -	12.2	12.5	12.7	12.8 +	18
19	12.7 +	12.7 +	12.6 -	12.5 -	12.4	12.1 -	12.1 +	12.0 -	12.2	12.5	12.7	12.8 +	19
20	12.7 +	12.7 +	12.6 -	12.5 -	12.4	12.1 -	12.1 +	12.0 -	12.2	12.5	12.7	12.8 +	20
Min. -													
21	12.7 +	12.7 +	12.6 -	12.5 -	12.3 -	12.1 -	12.1 +	12.0 -	12.2	12.5	12.7	12.8 +	21
22	12.7 +	12.7 +	12.6 -	12.5 -	12.3 -	12.1 -	12.1 +	12.0 -	12.3 +	12.6 +	12.7	12.8 +	22
23	12.7 +	12.7 +	12.6 -	12.5 -	12.3 -	12.1 -	12.1 +	12.0 -	12.3 +	12.6 +	12.7	12.8 +	23
24	12.7 +	12.7 +	12.6 -	12.5 -	12.3 -	12.1 -	12.1 +	12.0 -	12.3 +	12.6 +	12.7	12.8 +	24
25	12.7 +	12.7 +	12.6 -	12.5 -	12.3 -	12.1 -	12.1 +	12.0 -	12.3 +	12.6 +	12.7	12.8 +	25
26	12.7 +	12.7 +	12.6 -	12.5 -	12.3 -	12.1 -	12.1 +	12.1 +	12.3 +	12.6 +	12.8 +	12.8 +	26
27	12.7 +	12.7 +	12.6 -	12.5 -	12.3 -	12.1 -	12.1 +	12.1 +	12.3 +	12.6 +	12.8 +	12.8 +	27
28	12.7 +	12.7 +	12.6 -	12.5 -	12.3 -	12.1 -	12.1 +	12.1 +	12.3 +	12.6 +	12.8 +	12.8 +	28
29	12.7 +		12.6 -	12.5 -	12.3 -	12.1 -	12.1 +	12.1 +	12.3 +	12.6 +	12.8 +	12.8 +	29
30	12.7 +		12.6 -	12.5 -	12.3 -	12.1 -	12.1 +	12.1 +	12.3 +	12.6 +	12.8 +	12.8 +	30
31	12.7 +		12.6 -		12.3 -		12.1 +	12.1 +		12.6 +		12.8 +	31
Monatsmittel	12.7	12.7	12.6	12.5	12.4	12.2	12.1 -	12.1 -	12.2	12.5	12.7	12.8 +	
Maximum	12.8 +	12.7	12.7	12.6	12.5	12.3	12.2	12.1 -	12.3	12.6	12.8 +	12.8 +	
Datum	08.01	01.02	01.03	01.04	01.05	01.06	22.07	01.08	21.09	22.10	24.11	01.12	
Minimum	12.6	12.7	12.6	12.5	12.3	12.1	12.1	12.0 -	12.1	12.3	12.6	12.8 +	
Datum	01.01	01.02	15.03	12.04	21.05	15.06	01.07	13.08	01.09	01.10	01.11	01.12	
Amplitude	0.2	0.0 +	0.1	0.1	0.2	0.2	0.1	0.1	0.2	0.3	0.2	0.0 +	
Jahr 2015	Mittel	12.5 °C		Maximum	12.8 (08.Jan)		Minimum	12.0 (13.Aug)		Amplitude	0.8 °C		



Periode	2004 - 2015												
Monatsmittel	12.8 +	12.7	12.6	12.5	12.4	12.2	12.1 -	12.1 -	12.2	12.4	12.6	12.7	
Maximum	13.1 +	13.1 +	12.9	12.9	12.9	12.8	12.8	12.7 -	12.8	12.9	13.1 +	13.1 +	
Jahr	2007	2007	2007	2012	2012	2012	2010	2010	2012	2012	2012	2006	
Minimum	12.3	12.4 +	12.3	12.1	11.8	11.6	11.5	11.4 -	11.5	11.9	12.2	12.3	
Jahr	2010	2010	2014	2008	2008	2008	2008	2008	2008	2008	2009	2009	
Amplitude	0.2 -	0.3	0.3	0.4	0.4	0.3	0.3	0.3	0.4	0.6 +	0.4	0.3	
Jahr	2013	2008	2008	2008	2013	2006	2006	2007	2008	2006	2013	2008	
Periode	Mittel	12.4 °C		Maximum	13.1 (17.Dez 2006)		Minimum	11.4 (05.Aug 2008)		Amplitude	1.7 °C		

Darstellung der letzten 12 Jahre

