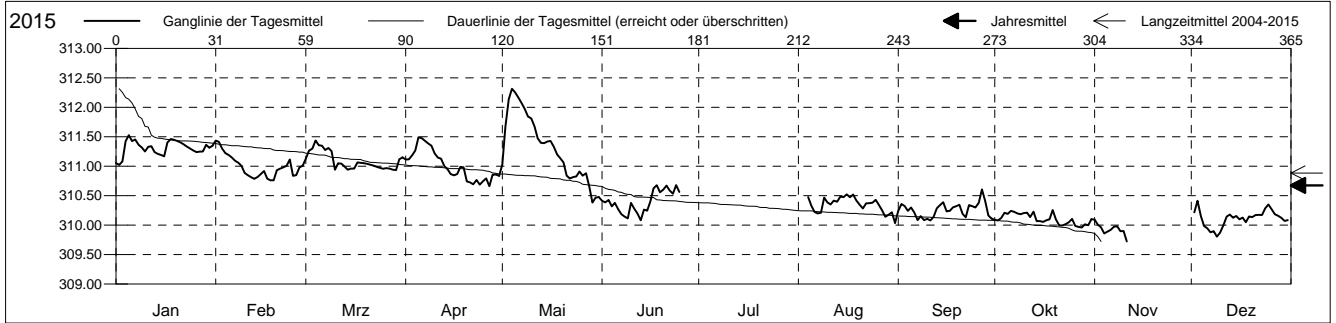


Grundwasserstände

Ergolzthal
 Liestal 39.A.4 PW Gitterli
 Abstichpunkt: 0.00 m ü.M.
 OK Terrain: 0.00 m ü.M.

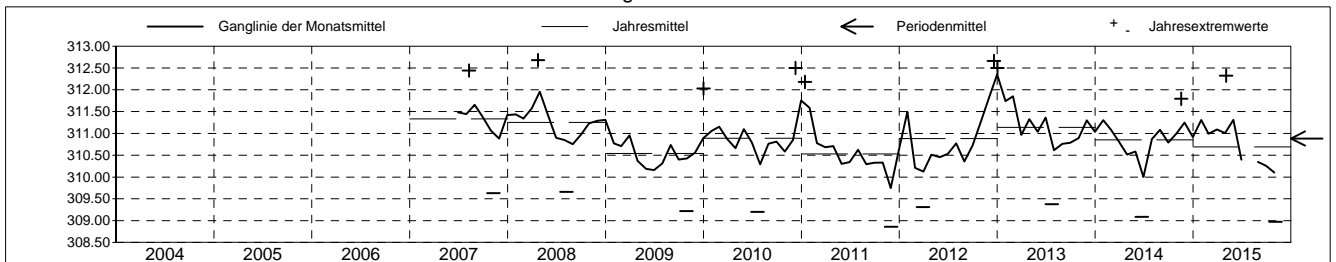
Amt für Umweltschutz und Energie
Kanton Basel-Landschaft
 Koordinaten: 0.00 / 0.00

| 2015 | Januar | Februar | März | April | Mai | Juni | Juli | August | September | Oktober | November | Dezember |
|--------------|----------|---------------|----------|----------|-----------------|--------|---------|-----------------|-----------|-----------|----------|----------|
| 1 | 311.05 | 311.44 + | 311.13 | 311.11 | 311.03 | 310.41 | | | 310.24 | 310.09 | 310.09 + | |
| 2 | 311.02 - | 311.41 | 311.26 | 311.12 | 311.67 | 310.39 | | | 310.36 | 310.08 | 310.01 | 310.22 |
| 3 | 311.08 | 311.30 | 311.30 | 311.19 | 312.14 | 310.43 | | | 310.32 | 310.12 | 309.96 | 310.41 + |
| 4 | 311.42 | 311.22 | 311.44 + | 311.26 | 312.32 + | 310.32 | | | 310.24 | 310.21 | 309.86 | 310.15 |
| 5 | 311.53 + | 311.19 | 311.19 | 311.49 + | 312.25 | 310.38 | | 310.47 | 310.30 | 310.19 | 309.89 | 309.98 |
| Tagesmittel | | | | | | | | 310.22 | 310.22 | 310.24 | 309.92 | 309.94 |
| 6 | 311.43 | 311.15 | 311.35 | 311.48 | 312.17 | 310.27 | | 310.20 | 310.08 - | 310.22 | 309.97 | 309.88 |
| 7 | 311.45 | 311.09 | 311.27 | 311.43 | 312.07 | 310.19 | | 310.21 | 310.15 | 310.20 | 309.98 | 309.90 |
| 8 | 311.36 | 311.06 | 311.31 | 311.39 | 311.97 | 310.14 | | 310.47 | 310.08 - | 310.18 | 309.90 | 309.80 |
| 9 | 311.32 | 311.01 | 311.26 | 311.35 | 311.84 | 310.11 | | 310.38 | 310.11 | 310.20 | 309.90 | 309.87 |
| 10 | 311.25 | 310.89 | 310.94 | 311.22 | 311.81 | 310.38 | | 310.35 | 310.08 - | 310.21 | 309.72 | 310.00 |
| 11 | 311.33 | 310.84 | 311.05 | 311.15 | 311.68 | 310.28 | | 310.41 | 310.14 | 310.14 | | 310.14 |
| 12 | 311.34 | 310.81 | 311.04 | 311.13 | 311.47 | 310.20 | | 310.40 | 310.29 | 310.23 | | 310.18 |
| 13 | 311.24 | 310.78 | 310.99 | 311.00 | 311.40 | 310.08 | | 310.48 | 310.34 | 310.07 | | 310.12 |
| 14 | 311.21 | 310.82 | 310.94 | 310.95 | 311.39 | 310.26 | | 310.47 | 310.39 | 310.07 | | 310.15 |
| Max. + | 311.19 | 310.87 | 310.96 | 310.87 | 311.42 | 310.24 | | 310.52 + | 310.23 | 310.05 | | 310.10 |
| 16 | 311.17 | 310.92 | 310.96 | 310.85 | 311.43 | 310.40 | | 310.47 | 310.24 | 310.08 | | 310.13 |
| 17 | 311.40 | 310.79 | 311.07 | 310.86 | 311.33 | 310.62 | | 310.52 + | 310.30 | 310.10 | | 310.05 |
| 18 | 311.46 | 310.76 - | 311.06 | 310.99 | 311.20 | 310.68 | | 310.42 | 310.32 | 310.26 + | | 310.14 |
| 19 | 311.45 | 310.76 - | 311.05 | 310.98 | 311.14 | 310.56 | | 310.35 | 310.35 | 310.10 | | 310.14 |
| Min. - | 311.43 | 310.93 | 311.04 | 310.74 | 311.07 | 310.60 | | 310.28 | 310.19 | 310.00 | | 310.17 |
| 21 | 311.40 | 310.96 | 311.03 | 310.73 | 310.84 | 310.67 | | 310.37 | 310.13 | 309.99 | | 310.17 |
| 22 | 311.37 | 310.98 | 311.01 | 310.69 | 310.79 | 310.59 | | 310.37 | 310.34 | 310.02 | | 310.17 |
| 23 | 311.33 | 311.01 | 310.99 | 310.77 | 310.81 | 310.53 | | 310.38 | 310.32 | 310.05 | | 310.28 |
| 24 | 311.30 | 311.12 | 310.97 | 310.69 | 310.83 | 310.68 | | 310.43 | 310.30 | 310.11 | | 310.35 |
| 25 | 311.27 | 310.84 | 310.96 | 310.74 | 310.91 | 310.56 | | 310.34 | 310.38 | 309.99 | | 310.27 |
| 26 | 311.24 | 310.85 | 310.97 | 310.79 | 310.84 | | | 310.25 | 310.60 + | 309.97 | | 310.19 |
| 27 | 311.25 | 310.98 | 310.96 | 310.66 - | 310.88 | | | 310.14 | 310.41 | 309.96 - | | 310.16 |
| 28 | 311.25 | 311.01 | 310.94 | 310.86 | 310.66 | | | 310.17 | 310.16 | 310.01 | | 310.12 |
| 29 | 311.37 | | 310.93 - | 310.86 | 310.38 - | | | 310.22 | 310.11 | 310.00 | | 310.07 |
| 30 | 311.31 | | 311.12 | 310.84 | 310.47 | | | 310.04 | 310.10 | 310.10 | | 310.08 |
| 31 | 311.35 | | 311.15 | | 310.47 | | | | | | | |
| Monatsmittel | 311.31 + | 310.99 | 311.09 | 311.01 | 311.31 + | 310.40 | | 310.35 | 310.26 | 310.10 - | | 310.11 |
| Maximum | 311.57 | 311.45 | 311.48 | 311.50 | 312.32 + | 310.91 | | 310.83 | 310.68 | 310.58 | 310.40 - | 310.71 |
| Datum | 04.01 | 01.02 | 02.03 | 05.04 | 04.05 | 01.06 | | 11.08 | 01.09 | 06.10 | 01.11 | 02.12 |
| Amplitude | 1.12 | 1.42 | 1.54 | 1.77 | 2.73 | 1.60 | | 1.60 | 1.48 | 1.52 | 1.43 | 1.56 |
| Jahr 2015 | Mittel | 310.67 m ü.M. | | Maximum | 312.32 (04.Mai) | | Minimum | 308.97 (04.Nov) | | Amplitude | 3.35 m | |



| Periode | 2004 - 2015 | | | | | | | | | | | |
|--------------|-------------|---------------|--------|----------|----------------------|----------|----------|----------------------|--------|-----------|--------|----------|
| Monatsmittel | 311.34 + | 311.02 | 310.88 | 310.88 | 310.80 | 310.66 - | 310.72 | 310.75 | 310.72 | 310.77 | 310.96 | 311.16 |
| Maximum | 312.50 | 312.42 | 311.90 | 312.68 + | 312.32 | 312.16 | 311.84 - | 312.44 | 312.03 | 312.28 | 312.64 | 312.66 |
| Jahr | 2013 | 2013 | 2009 | 2008 + | 2015 | 2013 | 2012 | 2007 | 2008 | 2008 | 2012 | 2012 |
| Minimum | 309.67 + | 309.44 | 309.31 | 309.32 | 309.25 | 309.09 | 309.20 | 309.17 | 309.21 | 309.07 | 308.87 | 308.86 - |
| Jahr | 2009 | 2012 | 2012 | 2012 | 2011 | 2014 | 2010 | 2011 | 2015 | 2015 | 2011 | 2011 |
| Amplitude | 2.23 | 2.20 | 1.89 - | 2.59 | 2.73 + | 2.33 | 2.45 | 2.38 | 2.37 | 2.48 | 2.19 | 2.70 |
| Jahr | 2010 | 2012 | 2009 | 2012 | 2015 | 2013 | 2014 | 2007 | 2008 | 2008 | 2008 | 2011 |
| Periode | Mittel | 310.88 m ü.M. | | Maximum | 312.68 (23.Apr 2008) | | Minimum | 308.86 (01.Dez 2011) | | Amplitude | 3.82 m | |

Darstellung der letzten 12 Jahre



Grundwassertemperatur

Ergolzthal

Liestal

Abstichpunkt: OK Terrain:

39.A.4

0.00

0.00

PW Gitterli

m ü.M.

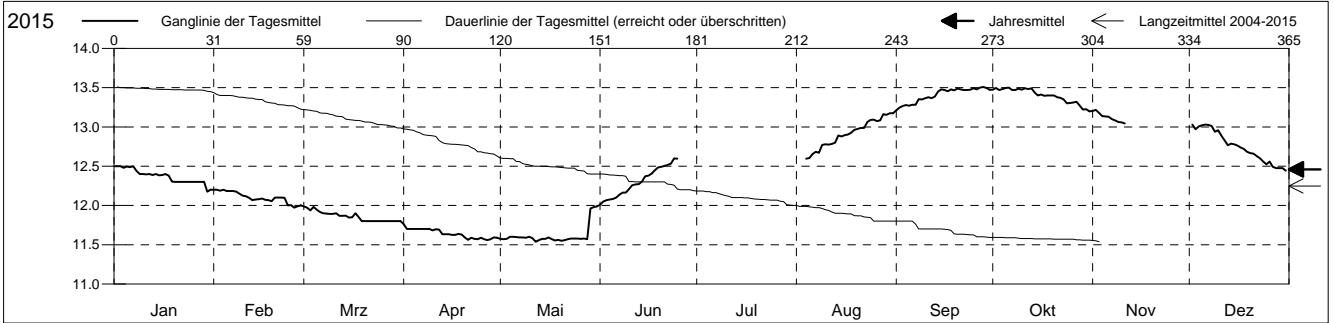
m ü.M.

Amt für Umweltschutz und Energie

Kanton Basel-Landschaft

Koordinaten: 0.00 / 0.00

| 2015 | Januar | Februar | März | April | Mai | Juni | Juli | August | September | Oktober | November | Dezember | |
|--------------|--------|---------|--------|---------|---------------|--------|---------|---------------|-----------|-----------|----------|----------|----|
| 1 | 12.5 + | 12.2 + | 12.0 + | 11.8 + | 11.6 | 12.0 | | | 13.2 - | 13.5 + | 13.2 + | | 1 |
| 2 | 12.5 + | 12.2 + | 12.0 + | 11.7 | 11.6 | 12.1 | | | 13.2 - | 13.5 + | 13.2 + | 13.0 + | 2 |
| 3 | 12.5 + | 12.2 + | 11.9 | 11.7 | 11.6 | 12.1 | | | 13.3 | 13.5 + | 13.2 + | 13.0 + | 3 |
| 4 | 12.5 + | 12.2 + | 12.0 + | 11.7 | 11.6 | 12.1 | | 12.6 | 13.3 | 13.5 + | 13.1 | 13.0 + | 4 |
| 5 | 12.5 + | 12.2 + | 11.9 | 11.7 | 11.6 | 12.1 | | 12.6 | 13.3 | 13.5 + | 13.1 | 13.0 + | 5 |
| Tagesmittel | | | | | | | | | | | | | |
| 6 | 12.5 + | 12.2 + | 11.9 | 11.7 | 11.6 | 12.1 | | 12.7 | 13.3 | 13.5 + | 13.1 | 13.0 + | 6 |
| 7 | 12.5 + | 12.2 + | 11.9 | 11.7 | 11.6 | 12.1 | | 12.7 | 13.3 | 13.5 + | 13.1 | 13.0 + | 7 |
| 8 | 12.4 | 12.2 + | 11.9 | 11.7 | 11.6 | 12.2 | | 12.7 | 13.4 | 13.5 + | 13.1 | 13.0 + | 8 |
| 9 | 12.4 | 12.1 | 11.9 | 11.7 | 11.6 | 12.2 | | 12.8 | 13.3 | 13.5 + | 13.1 | 12.9 | 9 |
| 10 | 12.4 | 12.1 | 11.9 | 11.7 | 11.6 | 12.2 | | 12.8 | 13.4 | 13.5 + | 13.1 | 13.0 + | 10 |
| 11 | 12.4 | 12.1 | 11.9 | 11.7 | 11.6 | 12.3 | | 12.8 | 13.4 | 13.5 + | 13.0 | 12.9 | 11 |
| 12 | 12.4 | 12.1 | 11.9 | 11.7 | 11.5 - | 12.3 | | 12.8 | 13.4 | 13.5 + | | 12.8 | 12 |
| 13 | 12.4 | 12.1 | 11.9 | 11.6 - | 11.6 | 12.3 | | 12.8 | 13.4 | 13.5 + | | 12.8 | 13 |
| 14 | 12.4 | 12.1 | 11.9 | 11.6 - | 11.6 | 12.3 | | 12.9 | 13.4 | 13.4 | | 12.8 | 14 |
| 15 | 12.4 | 12.1 | 11.8 - | 11.6 - | 11.6 | 12.4 | | 12.9 | 13.5 + | 13.4 | | 12.8 | 15 |
| Max. + | | | | | | | | | | | | | |
| 16 | 12.4 | 12.1 | 11.8 - | 11.6 - | 11.6 | 12.4 | | 12.9 | 13.5 + | 13.4 | | 12.8 | 16 |
| 17 | 12.4 | 12.1 | 11.9 | 11.6 - | 11.6 | 12.4 | | 12.9 | 13.5 + | 13.4 | | 12.7 | 17 |
| 18 | 12.4 | 12.1 | 11.9 | 11.6 - | 11.6 | 12.4 | | 12.9 | 13.5 + | 13.4 | | 12.7 | 18 |
| 19 | 12.3 | 12.1 | 11.8 - | 11.6 - | 11.6 | 12.5 | | 13.0 | 13.5 + | 13.4 | | 12.7 | 19 |
| 20 | 12.3 | 12.1 | 11.8 - | 11.6 - | 11.6 | 12.5 | | 13.0 | 13.5 + | 13.4 | | 12.7 | 20 |
| Min. - | | | | | | | | | | | | | |
| 21 | 12.3 | 12.1 | 11.8 - | 11.6 - | 11.6 | 12.5 | | 13.0 | 13.5 + | 13.4 | | 12.7 | 21 |
| 22 | 12.3 | 12.1 | 11.8 - | 11.6 - | 11.6 | 12.5 | | 13.0 | 13.5 + | 13.4 | | 12.6 | 22 |
| 23 | 12.3 | 12.1 | 11.8 - | 11.6 - | 11.6 | 12.5 | | 13.1 | 13.5 + | 13.4 | | 12.6 | 23 |
| 24 | 12.3 | 12.0 - | 11.8 - | 11.6 - | 11.6 | 12.6 + | | 13.1 | 13.5 + | 13.3 | | 12.6 | 24 |
| 25 | 12.3 | 12.0 - | 11.8 - | 11.6 - | 11.6 | 12.6 + | | 13.1 | 13.5 + | 13.3 | | 12.5 | 25 |
| 26 | 12.3 | 12.0 - | 11.8 - | 11.6 - | 11.6 | | | 13.1 | 13.5 + | 13.3 | | 12.6 | 26 |
| 27 | 12.3 | 12.0 - | 11.8 - | 11.6 - | 11.6 | | | 13.1 | 13.5 + | 13.3 | | 12.5 | 27 |
| 28 | 12.3 | 12.0 - | 11.8 - | 11.6 - | 11.6 | | | 13.2 + | 13.5 + | 13.3 | | 12.5 | 28 |
| 29 | 12.3 | | 11.8 - | 11.6 - | 12.0 + | | | 13.2 + | 13.5 + | 13.2 - | | 12.5 | 29 |
| 30 | 12.2 - | | 11.8 - | 11.6 - | 12.0 + | | | 13.2 + | 13.5 + | 13.2 - | | 12.5 | 30 |
| 31 | 12.2 - | | 11.8 - | | 12.0 + | | | 13.2 + | | 13.2 - | | 12.4 | 31 |
| Monatsmittel | 12.4 | 12.1 | 11.9 | 11.6 - | 11.6 - | 12.3 | | 12.9 | 13.4 + | 13.4 + | | 12.8 | |
| Maximum | 12.5 | 12.2 | 12.0 | 11.8 - | 12.0 | 12.7 | | 13.3 | 13.6 + | 13.6 + | 13.3 | 13.1 | |
| Datum | 01.01 | 01.02 | 01.03 | 01.04 | 29.05 | 24.06 | | 30.08 | 28.09 | 01.10 | 01.11 | 02.12 | |
| Minimum | 12.1 | 11.9 | 11.7 | 11.5 | 11.4 - | 12.0 | | 12.5 | 13.1 | 13.2 + | 13.0 | 12.3 | |
| Datum | 30.01 | 19.02 | 15.03 | 13.04 | 12.05 | 01.06 | | 04.08 | 01.09 | 25.10 | 08.11 | 31.12 | |
| Amplitude | 0.4 | 0.3 | 0.3 | 0.3 | 0.6 | 0.7 | | 0.8 | 0.5 | 0.4 | 0.3 | 0.8 | |
| Jahr 2015 | Mittel | 12.5 °C | | Maximum | 13.6 (28.Sep) | | Minimum | 11.4 (12.Mai) | | Amplitude | 2.2 °C | | |



| Periode | 2004 - 2015 | | | | | | | | | | | | |
|--------------|-------------|---------|------|---------|--------------------|------|---------|--------------------|--------|-----------|--------|------|--|
| Monatsmittel | 12.2 | 12.0 | 11.6 | 11.4 - | 11.4 - | 11.8 | 12.2 | 12.6 | 13.0 + | 13.0 + | 12.8 | 12.6 | |
| Maximum | 12.6 | 12.4 | 12.2 | 12.0 - | 12.0 - | 12.7 | 12.9 | 13.3 | 13.6 + | 13.6 + | 13.3 | 13.1 | |
| Jahr | 2012 | 2013 | 2013 | 2013 | 2015 | 2015 | 2009 | 2011 | 2011 | 2011 | 2011 | 2015 | |
| Minimum | 10.3 - | 11.3 | 10.9 | 10.6 | 10.5 | 11.3 | 11.4 | 11.9 | 12.4 | 12.5 + | 12.5 + | 12.0 | |
| Jahr | 2013 | 2009 | 2009 | 2008 | 2008 | 2008 | 2013 | 2013 | 2007 | 2007 | 2010 | 2011 | |
| Amplitude | 2.1 + | 0.8 | 0.9 | 0.9 | 1.0 | 0.9 | 1.1 | 0.9 | 0.8 | 0.5 - | 0.8 | 0.8 | |
| Jahr | 2013 | 2012 | 2012 | 2009 | 2008 | 2009 | 2009 | 2012 | 2011 | 2011 | 2011 | 2011 | |
| Periode | Mittel | 12.2 °C | | Maximum | 13.6 (27.Sep 2011) | | Minimum | 10.3 (16.Jan 2013) | | Amplitude | 3.3 °C | | |

Darstellung der letzten 12 Jahre

