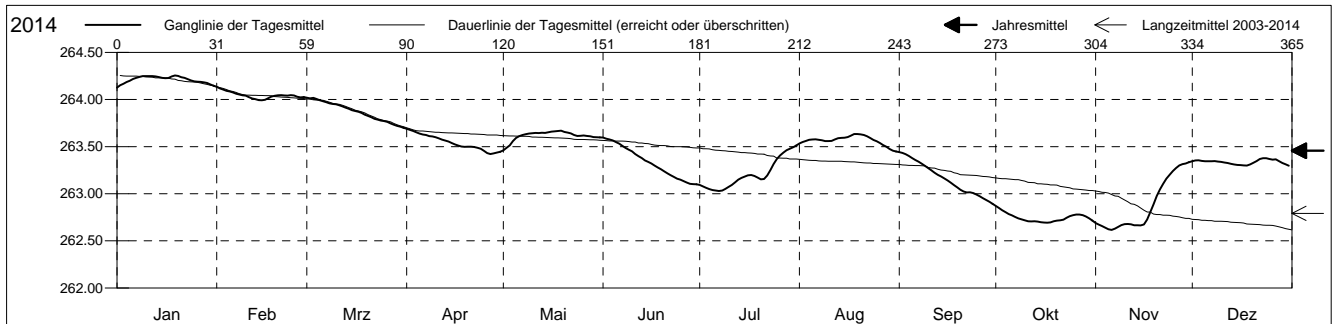


**Grundwasserstände**

Ergolzthal  
 Pratteln 41.J.14 Löli - Remeli  
 Abstichpunkt: 0.00 m ü.M.  
 OK Terrain: 0.00 m ü.M.

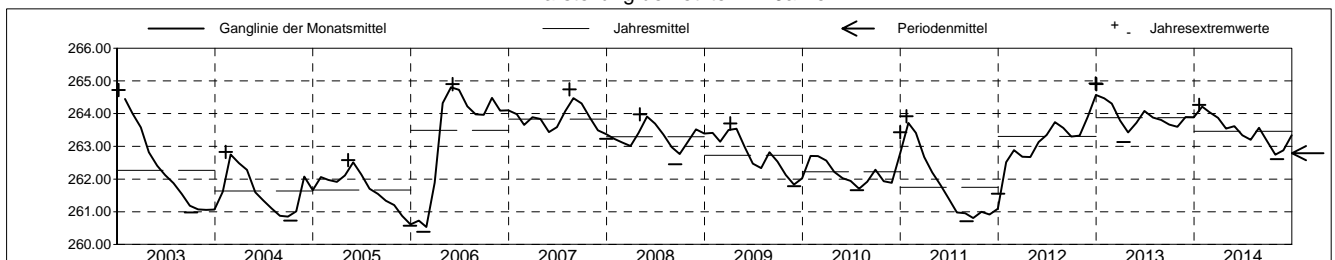
**Amt für Umweltschutz und Energie**  
**Kanton Basel-Landschaft**  
 Koordinaten: 0.00 / 0.00

2014	Januar	Februar	März	April	Mai	Juni	Juli	August	September	Oktober	November	Dezember	
1	264.13 -	264.13 +	264.02 +	263.69 +	263.46 -	263.60 +	263.09	263.53	263.44 +	262.87 +	262.69	263.35	1
2	264.15	264.12	264.01	263.68	263.49	263.59	263.08	263.55	263.43	262.85	262.67	263.35	2
3	264.17	264.11	264.02 +	263.67	263.51	263.58	263.06	263.56	263.42	262.83	262.66	263.36	3
4	264.19	264.09	264.01	263.65	263.56	263.57	263.05	263.57	263.40	262.80	262.64	263.35	4
5	264.20	264.09	263.99	263.64	263.59	263.55	263.04	263.58	263.38	262.78	262.62 -	263.35	5
Tagesmittel													
6	264.22	264.07	263.98	263.63	263.61	263.53	263.03 -	263.58	263.36	262.77	262.62 -	263.35	6
7	264.23	264.06	263.97	263.62	263.62	263.51	263.03 -	263.57	263.34	262.75	262.63	263.34	7
8	264.24	264.05	263.96	263.61	263.63	263.49	263.03 -	263.57	263.32	262.74	262.65	263.35	8
9	264.25	264.04	263.95	263.61	263.64	263.47	263.05	263.56	263.30	262.73	262.67	263.34	9
10	264.25	264.04	263.95	263.60	263.64	263.45	263.07	263.56	263.27	262.72	262.68	263.34	10
11	264.25	264.02	263.94	263.59	263.65	263.42	263.09	263.56	263.25	262.71	262.68	263.33	11
12	264.25	264.01	263.93	263.57	263.64	263.40	263.12	263.58	263.22	262.71	262.67	263.33	12
13	264.25	264.00	263.91	263.56	263.65	263.38	263.15	263.59	263.20	262.71	262.67	263.32	13
14	264.24	263.99 -	263.90	263.55	263.65	263.35	263.17	263.59	263.18	262.70	262.67	263.31	14
15	264.23	263.99 -	263.89	263.54	263.65	263.34	263.18	263.59	263.16	262.70	262.66	263.31	15
Max. +													
16	264.23	264.00	263.88	263.52	263.66	263.32	263.19	263.60	263.14	262.69 -	262.67	263.30 -	16
17	264.23	264.01	263.87	263.51	263.66	263.30	263.20	263.62	263.12	262.69 -	262.73	263.30 -	17
18	264.25	264.03	263.86	263.50	263.67 +	263.28	263.19	263.63 +	263.09	262.70	262.81	263.30 -	18
19	264.26 +	264.04	263.84	263.50	263.67 +	263.26	263.17	263.63 +	263.07	262.71	262.89	263.31	19
20	264.25	264.05	263.82	263.50	263.65	263.24	263.15	263.63 +	263.04	262.72	262.98	263.33	20
Min. -													
21	264.24	264.05	263.81	263.50	263.65	263.22	263.16	263.62	263.02	262.72	263.05	263.35	21
22	264.23	264.04	263.80	263.50	263.64	263.20	263.19	263.61	263.01	262.73	263.11	263.37	22
23	264.22	264.04	263.79	263.49	263.62	263.18	263.25	263.59	263.01	262.74	263.16	263.38 +	23
24	264.20	264.05	263.78	263.48	263.61	263.16	263.32	263.57	263.01	262.76	263.20	263.38 +	24
25	264.19	264.04	263.77	263.46	263.62	263.15	263.37	263.56	262.99	262.77	263.24	263.37	25
26	264.19	264.03	263.76	263.43	263.62	263.13	263.41	263.54	262.97	262.78	263.27	263.36	26
27	264.19	264.02	263.75	263.42 -	263.61	263.12	263.44	263.52	262.95	262.78	263.30	263.36	27
28	264.18	264.03	263.73	263.43	263.61	263.11	263.46	263.50	262.93	262.77	263.31	263.34	28
29	264.17		263.72	263.44	263.60	263.10 -	263.48	263.47	262.92	262.76	263.32	263.33	29
30	264.16		263.71	263.44	263.60	263.10 -	263.49	263.46	262.89 -	262.74	263.33 +	263.31	30
31	264.15		263.70 -		263.60		263.51 +	263.45 -		262.71		263.30 -	31
Monatsmittel	264.21 +	264.04	263.87	263.54	263.62	263.34	263.20	263.57	263.16	262.75 -	262.87	263.34	
Maximum	264.27 +	264.14	264.03	263.70	263.68	263.60	263.53	263.64	263.45	262.88 -	263.35	263.39	
Datum	19.01	01.02	01.03	01.04	19.05	01.06	31.07	18.08	01.09	01.10	30.11	23.12	
Amplitude	0.16	0.15	0.33	0.28	0.23	0.51	0.50	0.20	0.57	0.20	0.74	0.10	
Jahr 2014	Mittel	263.46 m ü.M.		Maximum	264.27 (19.Jan)		Minimum	262.61 (06.Nov)		Amplitude	1.66 m		



Periode	2003 - 2014												
Monatsmittel	263.09 +	263.04	262.99	263.03	262.99	262.85	262.68	262.67	262.51	262.46 -	262.53	262.66	
Maximum	264.90	264.43	264.15 -	264.87	264.87	264.90	264.51	264.74	264.53	264.61	264.32	264.92 +	
Jahr	2013	2013	2013	2006	2006	2006	2006	2007	2007	2006	2006	2012	
Minimum	260.57	260.39 -	260.67	261.87 +	261.33	261.14	260.82	260.75	260.71	260.73	260.67	260.57	
Jahr	2006	2006	2006	2010	2004	2011	2011	2011	2011	2004	2005	2005	
Amplitude	1.58	0.73	2.61 +	1.59	0.56 -	0.73	0.76	0.66	0.68	1.12	0.74	1.32	
Jahr	2004	2011	2006	2006	2004	2005	2009	2007	2008	2004	2014	2010	
Periode	Mittel	262.79 m ü.M.		Maximum	264.92 (29.Dez 2012)		Minimum	260.39 (17.Feb 2006)		Amplitude	4.53 m		

Darstellung der letzten 12 Jahre

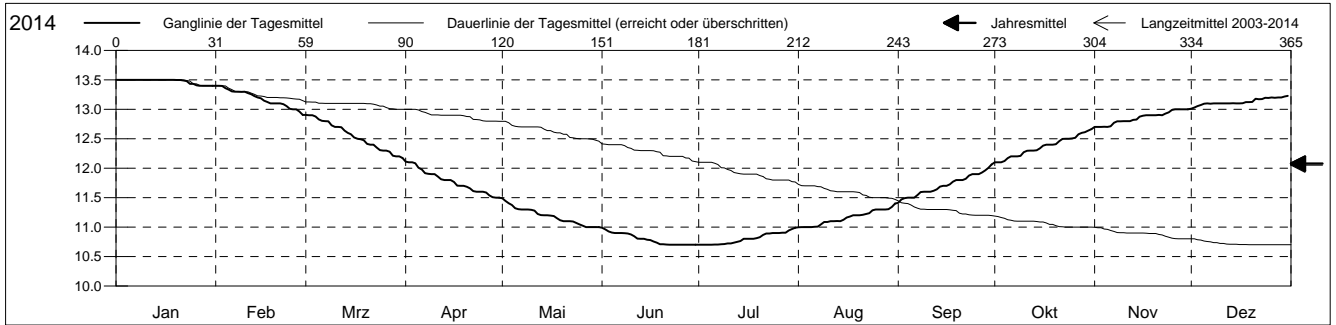


**Grundwassertemperatur**

Ergolzthal  
 Pratteln 41.J.14 Löli - Remeli  
 Abstichpunkt: 0.00 m ü.M.  
 OK Terrain: 0.00 m ü.M.

**Amt für Umweltschutz und Energie**  
**Kanton Basel-Landschaft**  
 Koordinaten: 0.00 / 0.00

2014	Januar	Februar	März	April	Mai	Juni	Juli	August	September	Oktober	November	Dezember	
1	13.5 +	13.4 +	12.9 +	12.1 +	11.5 +	11.0 +	10.7 -	11.0 -	11.4 -	12.1 -	12.7 -	13.0 -	1
2	13.5 +	13.4 +	12.9 +	12.1 +	11.4	11.0 +	10.7 -	11.0 -	11.5	12.1 -	12.7 -	13.0 -	2
3	13.5 +	13.4 +	12.9 +	12.1 +	11.4	10.9	10.7 -	11.0 -	11.5	12.1 -	12.7 -	13.1	3
4	13.5 +	13.4 +	12.9 +	12.1 +	11.4	10.9	10.7 -	11.0 -	11.5	12.1 -	12.7 -	13.1	4
5	13.5 +	13.3	12.8	12.0	11.3	10.9	10.7 -	11.0 -	11.5	12.2	12.7 -	13.1	5
Tagesmittel													
6	13.5 +	13.3	12.8	12.0	11.3	10.9	10.7 -	11.0 -	11.5	12.2	12.7 -	13.1	6
7	13.5 +	13.3	12.8	11.9	11.3	10.9	10.7 -	11.0 -	11.5	12.2	12.8	13.1	7
8	13.5 +	13.3	12.8	11.9	11.3	10.9	10.7 -	11.0 -	11.6	12.2	12.8	13.1	8
9	13.5 +	13.3	12.7	11.9	11.3	10.9	10.7 -	11.1	11.6	12.2	12.8	13.1	9
10	13.5 +	13.3	12.7	11.9	11.3	10.9	10.7 -	11.1	11.6	12.3	12.8	13.1	10
11	13.5 +	13.3	12.7	11.9	11.3	10.8	10.7 -	11.1	11.6	12.3	12.8	13.1	11
12	13.5 +	13.3	12.7	11.8	11.2	10.8	10.7 -	11.1	11.6	12.3	12.8	13.1	12
13	13.5 +	13.2	12.6	11.8	11.2	10.8	10.8	11.1	11.6	12.3	12.8	13.1	13
14	13.5 +	13.2	12.6	11.8	11.2	10.8	10.8	11.1	11.7	12.3	12.8	13.1	14
15	13.5 +	13.2	12.6	11.8	11.2	10.8	10.8	11.1	11.7	12.3	12.9	13.1	15
Max. +													
16	13.5 +	13.1	12.5	11.8	11.2	10.8	10.8	11.2	11.7	12.4	12.9	13.1	16
17	13.5 +	13.1	12.5	11.7	11.2	10.8	10.8	11.2	11.7	12.4	12.9	13.1	17
18	13.5 +	13.1	12.5	11.7	11.1	10.7 -	10.8	11.2	11.8	12.4	12.9	13.1	18
19	13.5 +	13.1	12.5	11.7	11.1	10.7 -	10.8	11.2	11.8	12.4	12.9	13.1	19
20	13.5 +	13.1	12.4	11.7	11.1	10.7 -	10.8	11.2	11.8	12.4	12.9	13.1	20
Min. -													
21	13.5 +	13.1	12.4	11.7	11.1	10.7 -	10.9	11.2	11.8	12.5	12.9	13.2 +	21
22	13.5 +	13.1	12.4	11.6	11.1	10.7 -	10.9	11.2	11.8	12.5	12.9	13.2 +	22
23	13.5 +	13.1	12.4	11.6	11.1	10.7 -	10.9	11.2	11.9	12.5	12.9	13.2 +	23
24	13.4 -	13.0	12.3	11.6	11.1	10.7 -	10.9	11.3	11.9	12.5	12.9	13.2 +	24
25	13.4 -	13.0	12.3	11.6	11.0 -	10.7 -	10.9	11.3	11.9	12.5	13.0 +	13.2 +	25
26	13.4 -	13.0	12.3	11.6	11.0 -	10.7 -	10.9	11.3	11.9	12.5	13.0 +	13.2 +	26
27	13.4 -	13.0	12.3	11.5 -	11.0 -	10.7 -	10.9	11.3	11.9	12.6	13.0 +	13.2 +	27
28	13.4 -	12.9 -	12.2 -	11.5 -	11.0 -	10.7 -	10.9	11.3	12.0	12.6	13.0 +	13.2 +	28
29	13.4 -		12.2 -	11.5 -	11.0 -	10.7 -	10.9	11.3	12.0	12.6	13.0 +	13.2 +	29
30	13.4 -		12.2 -	11.5 -	11.0 -	10.7 -	11.0 +	11.3	12.1 +	12.6	13.0 +	13.2 +	30
31	13.4 -		12.2 -		11.0 -		11.0 +	11.4 +		12.7 +		13.2 +	31
Monatsmittel	13.5 +	13.2	12.5	11.8	11.2	10.8 -	10.8 -	11.2	11.7	12.4	12.9	13.1	
Maximum	13.5 +	13.4	13.0	12.2	11.5	11.0 -	11.0 -	11.4	12.1	12.7	13.0	13.3	
Datum	01.01	01.02	01.03	01.04	01.05	01.06	27.07	29.08	29.09	29.10	21.11	30.12	
Minimum	13.4 +	12.9	12.1	11.5	11.0	10.7 -	10.7 -	10.9	11.4	12.1	12.7	13.0	
Datum	20.01	27.02	31.03	26.04	23.05	15.06	01.07	01.08	01.09	01.10	01.11	01.12	
Amplitude	0.1	0.5	0.9	0.7	0.5	0.3	0.3	0.5	0.7	0.6	0.3	0.3	
Jahr 2014	Mittel	12.1 °C		Maximum	13.5 (01.Jan)		Minimum	10.7 (15.Jun)		Amplitude	2.8 °C		



Periode	2003 - 2014												
Monatsmittel	12.9 +	12.8	12.5	12.1	11.7	11.4	11.2 -	11.2 -	11.6	12.0	12.5	12.8	
Maximum	13.6 +	13.4	13.0	12.7	12.5	12.3	12.1	12.0 -	12.3	12.9	13.5	13.6 +	
Jahr	2007	2007	2014	2010	2004	2004	2004	2004	2007	2006	2006	2006	
Minimum	12.1	12.2 +	11.9	11.4	10.8	10.5	10.4 -	10.5	10.8	11.2	11.7	12.1	
Jahr	2006	2006	2003	2008	2008	2003	2008	2003	2003	2009	2009	2004	
Amplitude	0.2 -	0.5	0.9	0.7	0.6	0.6	0.5	0.6	0.8	1.1 +	0.9	0.5	
Jahr	2004	2008	2014	2008	2003	2006	2006	2007	2008	2006	2013	2010	
Periode	Mittel	12.1 °C		Maximum	13.6 (08.Dez 2006)		Minimum	10.4 (24.Jul 2008)		Amplitude	3.2 °C		

Darstellung der letzten 12 Jahre

