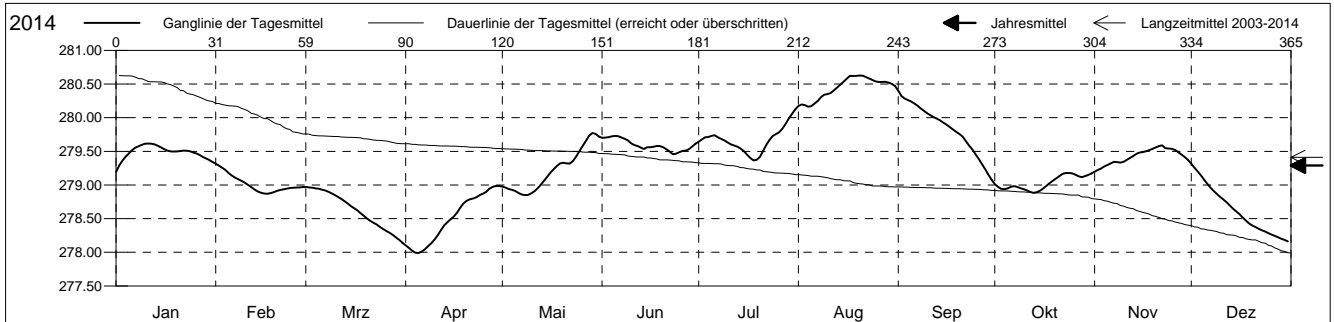


Grundwasserstände

Birstal
 Reinach 24.J.16 Kägen
 Abstichpunkt: 0.00 m ü.M.
 OK Terrain: 0.00 m ü.M.

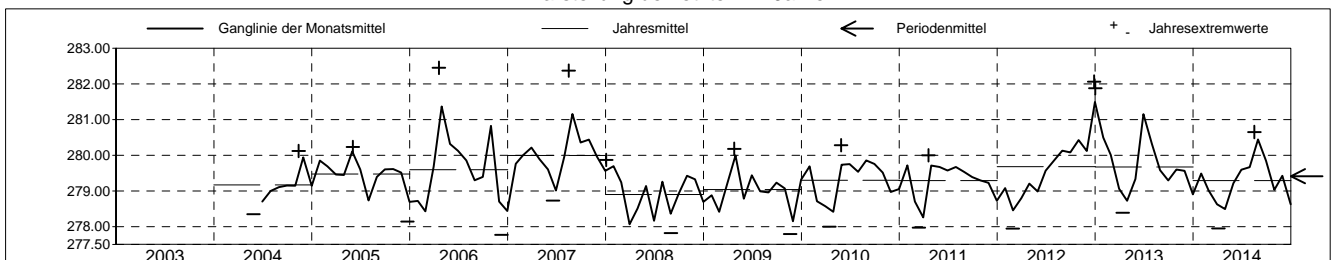
Amt für Umweltschutz und Energie
Kanton Basel-Landschaft
 Koordinaten: 0.00 / 0.00

2014	Januar	Februar	März	April	Mai	Juni	Juli	August	September	Oktober	November	Dezember	
1	279.19 -	279.32 +	278.97 +	278.10	278.98	279.70	279.64	280.17	280.40 +	279.02	279.20 -	279.32 +	1
2	279.29	279.29	278.96	278.06	278.96	279.70	279.68	280.20	280.32	278.97	279.22	279.26	2
3	279.36	279.26	278.96	278.02	278.94	279.71	279.71	280.19	280.29	278.94	279.25	279.21	3
4	279.42	279.22	278.95	277.99 -	278.93	279.72	279.71	280.16 -	280.26	278.94	279.28	279.15	4
5	279.47	279.18	278.94	277.99 -	278.91	279.73 +	279.73	280.17	280.24	278.95	279.30	279.08	5
Tagesmittel													
6	279.52	279.14	278.93	278.01	278.88	279.73 +	279.74	280.21	280.21	278.98	279.32	279.02	6
7	279.55	279.11	278.92	278.05	278.86	279.71	279.71	280.25	280.18	278.98	279.35	278.96	7
8	279.58	279.09	278.90	278.09	278.85 -	279.69	279.68	280.30	280.14	278.97	279.34	278.91	8
9	279.60	279.06	278.88	278.14	278.85 -	279.66	279.66	280.34	280.10	278.95	279.33	278.87	9
10	279.61	279.04	278.85	278.19	278.88	279.62	279.63	280.35	280.06	278.94	279.35	278.82	10
11	279.62 +	279.00	278.82	278.25	278.91	279.59	279.60	280.36	280.04	278.92	279.37	278.78	11
12	279.61	278.97	278.79	278.33	278.95	279.58	279.59	280.41	280.01	278.90	279.40	278.74	12
13	279.60	278.94	278.76	278.40	279.01	279.56	279.57	280.45	279.99	278.88 -	279.43	278.70	13
14	279.58	278.91	278.73	278.45	279.06	279.54	279.54	280.49	279.96	278.89	279.46	278.65	14
15	279.56	278.88	278.69	278.49	279.12	279.56	279.51	280.53	279.93	278.92	279.48	278.61	15
Max. +													
16	279.53	278.87 -	278.66	278.53	279.18	279.56	279.46	280.58	279.90	278.95	279.49	278.57	16
17	279.51	278.87 -	278.62	278.59	279.24	279.57	279.40	280.62	279.86	278.99	279.50	278.52	17
18	279.50	278.88	278.58	278.67	279.29	279.58	279.37 -	280.62	279.83	279.03	279.52	278.47	18
19	279.50	278.89	278.54	278.73	279.32	279.58	279.37 -	280.62	279.79	279.06	279.54	278.43	19
20	279.50	278.91	278.50	278.77	279.33	279.56	279.42	280.63 +	279.76	279.09	279.56	278.40	20
Min. -													
21	279.50	278.93	278.47	278.79	279.32	279.53	279.50	280.62	279.72	279.13	279.58	278.37	21
22	279.51	278.94	278.44	278.80	279.32	279.50	279.59	280.60	279.65	279.16	279.59 +	278.35	22
23	279.51	278.95	278.41	278.82	279.36	279.46 -	279.67	280.58	279.59	279.18 +	279.55	278.33	23
24	279.50	278.95	278.38	278.85	279.42	279.47	279.73	280.56	279.53	279.18 +	279.54	278.31	24
25	279.48	278.96	278.35	278.87	279.50	279.49	279.76	280.54	279.46	279.17	279.54	278.28	25
26	279.47	278.96	278.32	278.90	279.58	279.51	279.78	280.53	279.39	279.16	279.52	278.26	26
27	279.45	278.96	278.29	278.95	279.66	279.51	279.84	280.53	279.31	279.13	279.49	278.24	27
28	279.42	278.97	278.26	278.97	279.74	279.53	279.91	280.53	279.23	279.12	279.45	278.22	28
29	279.40		278.22	278.99 +	279.77 +	279.57	279.99	280.52	279.15	279.13	279.42	278.20	29
30	279.37		278.18	278.98	279.76	279.61	280.06	280.50	279.08 -	279.15	279.37	278.18	30
31	279.34		278.14 -		279.72		280.12 +	280.47		279.17		278.16 -	31
Monatsmittel	279.49	279.02	278.63	278.49 -	279.21	279.59	279.67	280.44 +	279.85	279.03	279.42	278.63	
Maximum	279.65	279.35	279.01 -	279.02	279.81	279.76	280.17	280.65 +	280.43	279.21	279.62	279.34	
Datum	10.01	01.02	01.03	29.04	29.05	05.06	31.07	17.08	01.09	24.10	22.11	01.12	
Amplitude	0.53	0.53	0.90	1.07	1.00	0.34	0.84	0.52	1.39	0.37	0.47	1.21	
Jahr 2014	Mittel	279.29 m ü.M.		Maximum	280.65 (17.Aug)		Minimum	277.95 (05.Apr)		Amplitude	2.70 m		



Periode	2003 - 2014												
Monatsmittel	279.54	279.07	279.00 -	279.38	279.49	279.52	279.53	279.62	279.55	279.67 +	279.35	279.15	
Maximum	281.88	280.41 -	280.87	282.45 +	281.45	281.77	281.15	282.37	280.62	281.48	280.58	282.06	
Jahr	2013	2013	2006	2006	2006	2013	2013	2007	2007	2006	2012	2012	
Minimum	278.50	277.95	277.91	277.95	278.25	277.85	278.14	277.83	277.82	278.64 +	277.79	277.77 -	
Jahr	2009	2012	2008	2014	2009	2008	2008	2008	2008	2009	2009	2006	
Amplitude	2.47	1.36 -	2.78 +	2.26	1.68	1.71	1.56	2.30	1.81	1.74	1.74	1.85	
Jahr	2013	2008	2006	2006	2006	2013	2008	2007	2008	2006	2006	2006	
Periode	Mittel	279.41 m ü.M.		Maximum	282.45 (19.Apr 2006)		Minimum	277.77 (09.Dez 2006)		Amplitude	4.68 m		

Darstellung der letzten 12 Jahre

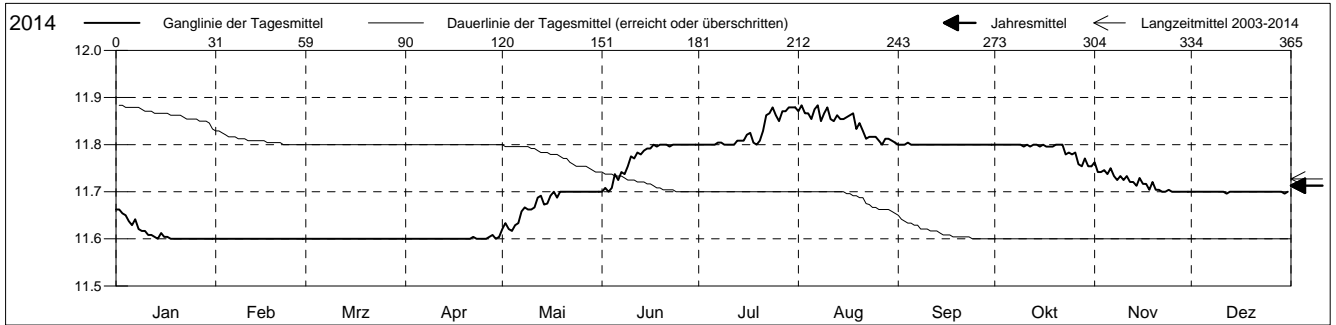


Grundwassertemperatur

Birstal
 Reinach 24.J.16 Kägen
 Abstichpunkt: 0.00 m ü.M.
 OK Terrain: 0.00 m ü.M.

Amt für Umweltschutz und Energie
Kanton Basel-Landschaft
 Koordinaten: 0.00 / 0.00

2014	Januar	Februar	März	April	Mai	Juni	Juli	August	September	Oktober	November	Dezember	
1	11.7 +	11.6 +	11.6 +	11.6 +	11.6 -	11.7 -	11.8 -	11.9 +	11.8 +	11.8 +	11.8 +	11.7 +	1
2	11.7 +	11.6 +	11.6 +	11.6 +	11.6 -	11.7 -	11.8 -	11.9 +	11.8 +	11.8 +	11.7 -	11.7 +	2
3	11.7 +	11.6 +	11.6 +	11.6 +	11.6 -	11.7 -	11.8 -	11.9 +	11.8 +	11.8 +	11.7 -	11.7 +	3
4	11.6 -	11.6 +	11.6 +	11.6 +	11.6 -	11.7 -	11.8 -	11.9 +	11.8 +	11.8 +	11.7 -	11.7 +	4
5	11.6 -	11.6 +	11.6 +	11.6 +	11.6 -	11.7 -	11.8 -	11.9 +	11.8 +	11.8 +	11.7 -	11.7 +	5
Tagesmittel													
6	11.6 -	11.6 +	11.6 +	11.6 +	11.6 -	11.7 -	11.8 -	11.9 +	11.8 +	11.8 +	11.8 +	11.7 +	6
7	11.6 -	11.6 +	11.6 +	11.6 +	11.7 +	11.7 -	11.8 -	11.9 +	11.8 +	11.8 +	11.7 -	11.7 +	7
8	11.6 -	11.6 +	11.6 +	11.6 +	11.7 +	11.7 -	11.8 -	11.9 +	11.8 +	11.8 +	11.7 -	11.7 +	8
9	11.6 -	11.6 +	11.6 +	11.6 +	11.7 +	11.8 +	11.8 -	11.9 +	11.8 +	11.8 +	11.7 -	11.7 +	9
10	11.6 -	11.6 +	11.6 +	11.6 +	11.7 +	11.8 +	11.8 -	11.9 +	11.8 +	11.8 +	11.7 -	11.7 +	10
11	11.6 -	11.6 +	11.6 +	11.6 +	11.7 +	11.8 +	11.8 -	11.9 +	11.8 +	11.8 +	11.7 -	11.7 +	11
12	11.6 -	11.6 +	11.6 +	11.6 +	11.7 +	11.8 +	11.8 -	11.9 +	11.8 +	11.8 +	11.7 -	11.7 +	12
13	11.6 -	11.6 +	11.6 +	11.6 +	11.7 +	11.8 +	11.8 -	11.9 +	11.8 +	11.8 +	11.7 -	11.7 +	13
14	11.6 -	11.6 +	11.6 +	11.6 +	11.7 +	11.8 +	11.8 -	11.9 +	11.8 +	11.8 +	11.7 -	11.7 +	14
15	11.6 -	11.6 +	11.6 +	11.6 +	11.7 +	11.8 +	11.8 -	11.9 +	11.8 +	11.8 +	11.7 -	11.7 +	15
Max. +													
16	11.6 -	11.6 +	11.6 +	11.6 +	11.7 +	11.8 +	11.8 -	11.9 +	11.8 +	11.8 +	11.7 -	11.7 +	16
17	11.6 -	11.6 +	11.6 +	11.6 +	11.7 +	11.8 +	11.8 -	11.9 +	11.8 +	11.8 +	11.7 -	11.7 +	17
18	11.6 -	11.6 +	11.6 +	11.6 +	11.7 +	11.8 +	11.8 -	11.9 +	11.8 +	11.8 +	11.7 -	11.7 +	18
19	11.6 -	11.6 +	11.6 +	11.6 +	11.7 +	11.8 +	11.8 -	11.8 -	11.8 +	11.8 +	11.7 -	11.7 +	19
20	11.6 -	11.6 +	11.6 +	11.6 +	11.7 +	11.8 +	11.8 -	11.8 -	11.8 +	11.8 +	11.7 -	11.7 +	20
Min. -													
21	11.6 -	11.6 +	11.6 +	11.6 +	11.7 +	11.8 +	11.8 -	11.8 -	11.8 +	11.8 +	11.7 -	11.7 +	21
22	11.6 -	11.6 +	11.6 +	11.6 +	11.7 +	11.8 +	11.9 +	11.8 -	11.8 +	11.8 +	11.7 -	11.7 +	22
23	11.6 -	11.6 +	11.6 +	11.6 +	11.7 +	11.8 +	11.9 +	11.8 -	11.8 +	11.8 +	11.7 -	11.7 +	23
24	11.6 -	11.6 +	11.6 +	11.6 +	11.7 +	11.8 +	11.9 +	11.8 -	11.8 +	11.8 +	11.7 -	11.7 +	24
25	11.6 -	11.6 +	11.6 +	11.6 +	11.7 +	11.8 +	11.9 +	11.8 -	11.8 +	11.8 +	11.7 -	11.7 +	25
26	11.6 -	11.6 +	11.6 +	11.6 +	11.7 +	11.8 +	11.9 +	11.8 -	11.8 +	11.8 +	11.7 -	11.7 +	26
27	11.6 -	11.6 +	11.6 +	11.6 +	11.7 +	11.8 +	11.9 +	11.8 -	11.8 +	11.8 +	11.7 -	11.7 +	27
28	11.6 -	11.6 +	11.6 +	11.6 +	11.7 +	11.8 +	11.9 +	11.8 -	11.8 +	11.8 +	11.7 -	11.7 +	28
29	11.6 -		11.6 +	11.6 +	11.7 +	11.8 +	11.9 +	11.8 -	11.8 +	11.8 +	11.7 -	11.7 +	29
30	11.6 -		11.6 +	11.6 +	11.7 +	11.8 +	11.9 +	11.8 -	11.8 +	11.8 +	11.7 -	11.7 +	30
31	11.6 -		11.6 +		11.7 +		11.9 +			11.8 +		11.7 +	31
Monatsmittel	11.6 -	11.6 -	11.6 -	11.6 -	11.7	11.8 +	11.8 +	11.8 +	11.8 +	11.8 +	11.7	11.7	
Maximum	11.7	11.6 -	11.6 -	11.7	11.7	11.8	11.9 +	11.9 +	11.9 +	11.8	11.8	11.7	
Datum	01.01	01.02	01.03	22.04	01.05	02.06	07.07	01.08	04.09	01.10	01.11	01.12	
Minimum	11.6 -	11.6 -	11.6 -	11.6 -	11.6 -	11.7	11.8 +	11.8 +	11.8 +	11.7	11.7	11.6 -	
Datum	01.01	01.02	01.03	01.04	01.05	01.06	01.07	01.08	01.09	10.10	01.11	12.12	
Amplitude	0.1	0.0 +	0.0 +	0.1	0.1	0.1	0.1	0.1	0.1	0.1	0.1	0.1	
Jahr 2014	Mittel	11.7 °C		Maximum	11.9 (07.Jul)		Minimum	11.6 (01.Jan)			Amplitude	0.3 °C	



Periode	2003 - 2014												
Monatsmittel	11.5 -	11.6	11.6	11.7	11.8	11.9 +	11.9 +	11.9 +	11.8	11.7	11.6	11.5 -	
Maximum	12.0	11.9 -	12.0	12.2	12.2	12.2	12.3	12.8 +	12.2	12.1	11.9 -	12.0	
Jahr	2013	2005	2005	2005	2005	2005	2004	2007	2012	2012	2012	2012	
Minimum	11.2 -	11.3	11.3	11.4	11.5	11.6	11.7 +	11.6	11.5	11.3	11.2 -	11.2 -	
Jahr	2010	2007	2009	2009	2009	2007	2007	2007	2007	2009	2009	2009	
Amplitude	0.3	0.2 -	0.2 -	0.3	0.2 -	0.3	0.2 -	1.2 +	0.2 -	0.3	0.2 -	0.3	
Jahr	2013	2006	2007	2012	2009	2013	2011	2007	2004	2005	2005	2012	
Periode	Mittel	11.7 °C		Maximum	12.8 (08.Aug 2007)		Minimum	11.2 (26.Nov 2009)			Amplitude	1.6 °C	

Darstellung der letzten 12 Jahre

