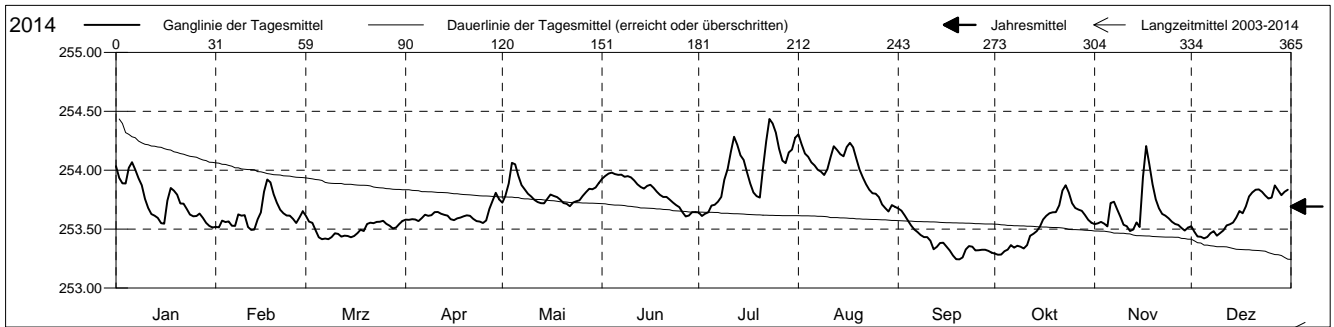


Grundwasserstände

Birstal
 Muttentz 21.J.01 Asprain
 Abstichpunkt: 0.00 m ü.M.
 OK Terrain: 0.00 m ü.M.

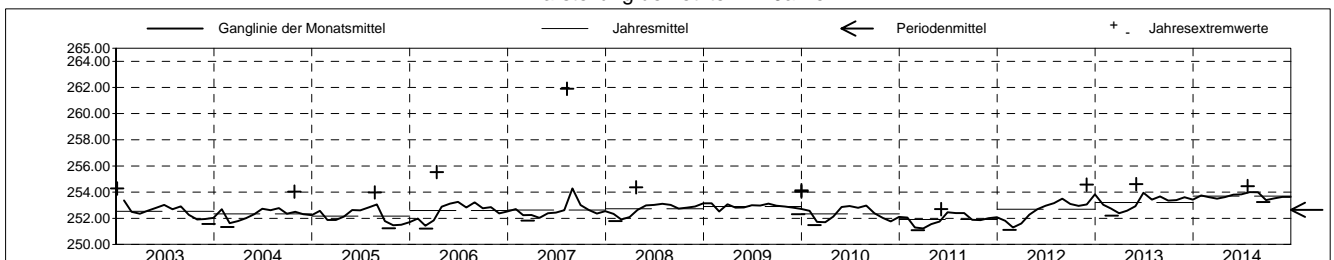
Amt für Umweltschutz und Energie
Kanton Basel-Landschaft
 Koordinaten: 0.00 / 0.00

2014	Januar	Februar	März	April	Mai	Juni	Juli	August	September	Oktober	November	Dezember	
1	254.03	253.52	253.61 +	253.58	253.72	253.93	253.64	254.30 +	253.67 +	253.29	253.54	253.52	1
2	253.94	253.51	253.56	253.58	253.78	253.95	253.61 -	254.22	253.66	253.28 -	253.55	253.48	2
3	253.89	253.57	253.55	253.58	253.89	253.97	253.63	254.14	253.62	253.28 -	253.56	253.44	3
4	253.89	253.56	253.49	253.58	254.06 +	253.98 +	253.64	254.11	253.57	253.31	253.55	253.43	4
5	254.02	253.57	253.43	253.57	254.05	253.97	253.70	254.07	253.53	253.33	253.52	253.42 -	5
Tagesmittel													
6	254.07 +	253.53	253.41 -	253.59	253.95	253.96	253.71	254.04	253.50	253.36	253.72	253.43	6
7	254.00	253.53	253.42	253.62	253.87	253.96	253.73	254.00	253.47	253.34	253.73	253.46	7
8	253.93	253.62	253.41 -	253.61	253.84	253.94	253.77	253.99	253.45	253.36	253.67	253.48	8
9	253.87	253.61	253.43	253.62	253.80	253.95	253.92	253.96	253.43	253.35	253.60	253.44	9
10	253.76	253.62	253.46	253.64	253.78	253.94	254.01	254.01	253.43	253.34	253.54	253.47	10
11	253.68	253.52	253.46	253.64	253.75	253.91	254.16	254.11	253.40	253.36	253.52	253.49	11
12	253.63	253.49 -	253.44	253.63	253.73	253.88	254.28	254.20	253.33	253.44	253.48 -	253.53	12
13	253.61	253.50	253.44	253.62	253.72	253.86	254.22	254.17	253.35	253.46	253.50	253.44	13
14	253.59	253.58	253.44	253.61	253.72	253.84	254.13	254.14	253.38	253.48	253.56	253.56	14
15	253.55	253.64	253.43	253.58	253.76	253.87	254.09	254.12	253.38	253.52	253.52	253.60	15
Max. +													
16	253.55	253.82	253.44	253.58	253.79	253.88	253.99	254.20	253.35	253.58	253.94	253.65	16
17	253.74	253.92 +	253.47	253.59	253.78	253.85	253.89	254.23	253.32	253.61	254.20 +	253.63	17
18	253.85	253.90	253.49	253.60	253.77	253.82	253.81	254.19	253.28	253.63	254.05	253.69	18
19	253.83	253.80	253.48	253.61	253.75	253.79	253.78	254.10	253.24 -	253.64	253.88	253.78	19
20	253.79	253.72	253.54	253.62	253.72	253.77	253.77	254.00	253.24 -	253.64	253.75	253.81	20
Min. -													
21	253.72	253.66	253.55	253.61	253.71	253.77	254.02	253.94	253.26	253.70	253.68	253.83	21
22	253.72	253.63	253.55	253.59	253.69 -	253.75	254.25	253.88	253.33	253.83	253.63	253.84	22
23	253.67	253.62	253.56	253.57	253.73	253.73	254.44 +	253.83	253.36	253.87 +	253.61	253.82	23
24	253.62	253.61	253.56	253.56	253.74	253.70	254.40	253.80	253.35	253.81	253.59	253.78	24
25	253.61	253.59	253.57	253.55 -	253.74	253.69	254.32	253.80	253.32	253.72	253.56	253.76	25
26	253.61	253.55	253.54	253.57	253.78	253.64	254.18	253.77	253.32	253.68	253.54	253.77	26
27	253.63	253.60	253.53	253.67	253.81	253.61 -	254.08	253.71	253.32	253.67	253.53	253.87 +	27
28	253.59	253.65	253.50	253.74	253.84	253.62	254.06	253.68	253.32	253.66	253.51	253.83	28
29	253.55		253.51	253.81 +	253.84	253.64	254.15	253.65 -	253.31	253.62	253.49	253.79	29
30	253.53		253.54	253.75	253.85	253.64	254.18	253.70	253.30	253.58	253.51	253.82	30
31	253.51 -		253.57		253.89		254.28	253.69		253.55		253.83	31
Monatsmittel	253.74	253.62	253.50	253.62	253.80	253.83	253.99 +	253.99 +	253.39 -	253.53	253.63	253.64	
Maximum	254.08	253.93	253.63 -	253.82	254.08	253.99	254.46 +	254.33	253.68	253.88	254.25	253.89	
Datum	06.01	17.02	01.03	29.04	04.05	04.06	23.07	01.08	01.09	23.10	17.11	27.12	
Amplitude	0.57	0.46	0.23	0.29	0.40	0.39	0.86	0.69	0.44	0.61	0.80	0.48	
Jahr 2014	Mittel	253.69 m ü.M.		Maximum	254.46 (23.Jul)		Minimum	253.24 (19.Sep)		Amplitude	1.22 m		



Periode	2003 - 2014												
Monatsmittel	252.67	252.07 -	252.14	252.44	252.76	253.02	252.96	253.24 +	252.67	252.57	252.52	252.67	
Maximum	254.28	253.96 -	254.22	255.53	254.08	254.61	254.46	261.90 +	254.43	254.30	254.57	254.48	
Jahr	2003	2013	2006	2006	2014	2013	2014	2007	2006	2006	2012	2013	
Minimum	251.34	251.11	251.09 -	251.33	251.64	252.09	252.18 +	252.13	251.30	251.24	251.39	251.34	
Jahr	2012	2012	2011	2011	2011	2007	2011	2011	2005	2005	2005	2005	
Amplitude	2.26	1.72	3.01	4.13	1.64	1.15	0.86 -	9.34 +	2.25	1.94	2.05	1.73	
Jahr	2010	2013	2006	2006	2010	2013	2014	2007	2006	2004	2012	2010	
Periode	Mittel	252.65 m ü.M.		Maximum	261.90 (10.Aug 2007)		Minimum	251.09 (11.Mrz 2011)		Amplitude	10.81 m		

Darstellung der letzten 12 Jahre

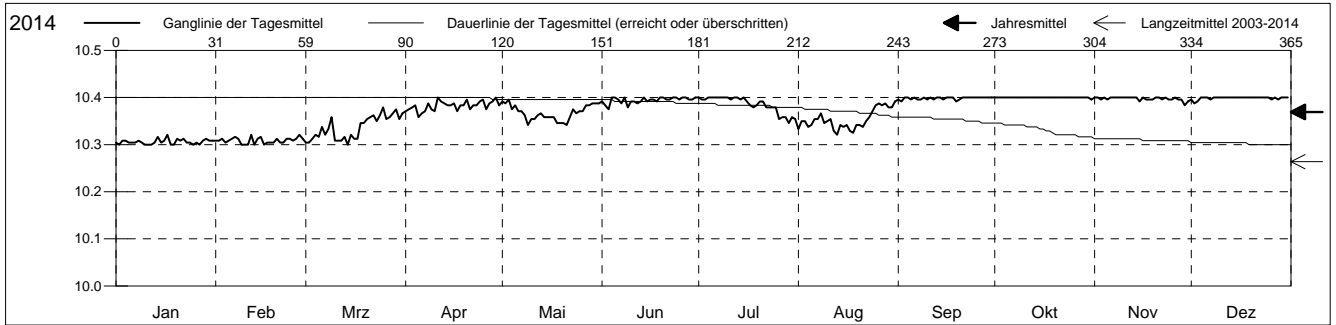


Grundwassertemperatur

Birstal
 Muttentz 21.J.01 Asprain
 Abstichpunkt: 0.00 m ü.M.
 OK Terrain: 0.00 m ü.M.

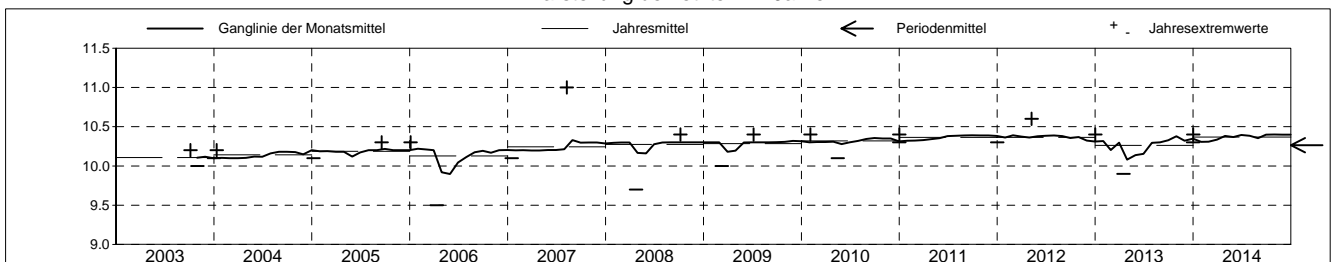
Amt für Umweltschutz und Energie
Kanton Basel-Landschaft
 Koordinaten: 0.00 / 0.00

2014	Januar	Februar	März	April	Mai	Juni	Juli	August	September	Oktober	November	Dezember	
1	10.3 +	10.3 +	10.3 -	10.4 +	10.4 +	10.4 +	10.4 +	10.3 -	10.4 +	10.4 +	10.4 +	10.4 +	1
2	10.3 +	10.3 +	10.3 -	10.4 +	10.4 +	10.4 +	10.4 +	10.4 +	10.4 +	10.4 +	10.4 +	10.4 +	2
3	10.3 +	10.3 +	10.3 -	10.4 +	10.4 +	10.4 +	10.4 +	10.4 +	10.4 +	10.4 +	10.4 +	10.4 +	3
4	10.3 +	10.3 +	10.3 -	10.4 +	10.4 +	10.4 +	10.4 +	10.3 -	10.4 +	10.4 +	10.4 +	10.4 +	4
5	10.3 +	10.3 +	10.3 -	10.4 +	10.4 +	10.4 +	10.4 +	10.3 -	10.4 +	10.4 +	10.4 +	10.4 +	5
Tagesmittel													
6	10.3 +	10.3 +	10.3 -	10.4 +	10.4 +	10.4 +	10.4 +	10.4 +	10.4 +	10.4 +	10.4 +	10.4 +	6
7	10.3 +	10.3 +	10.3 -	10.4 +	10.4 +	10.4 +	10.4 +	10.4 +	10.4 +	10.4 +	10.4 +	10.4 +	7
8	10.3 +	10.3 +	10.3 -	10.4 +	10.4 +	10.4 +	10.4 +	10.4 +	10.4 +	10.4 +	10.4 +	10.4 +	8
9	10.3 +	10.3 +	10.4 +	10.4 +	10.3 -	10.4 +	10.4 +	10.3 -	10.4 +	10.4 +	10.4 +	10.4 +	9
10	10.3 +	10.3 +	10.3 -	10.4 +	10.4 +	10.4 +	10.4 +	10.4 +	10.4 +	10.4 +	10.4 +	10.4 +	10
11	10.3 +	10.3 +	10.3 -	10.4 +	10.4 +	10.4 +	10.4 +	10.4 +	10.4 +	10.4 +	10.4 +	10.4 +	11
12	10.3 +	10.3 +	10.3 -	10.4 +	10.4 +	10.4 +	10.4 +	10.3 -	10.4 +	10.4 +	10.4 +	10.4 +	12
13	10.3 +	10.3 +	10.3 -	10.4 +	10.4 +	10.4 +	10.4 +	10.3 -	10.4 +	10.4 +	10.4 +	10.4 +	13
14	10.3 +	10.3 +	10.3 -	10.4 +	10.4 +	10.4 +	10.4 +	10.3 -	10.4 +	10.4 +	10.4 +	10.4 +	14
15	10.3 +	10.3 +	10.3 -	10.4 +	10.4 +	10.4 +	10.4 +	10.3 -	10.4 +	10.4 +	10.4 +	10.4 +	15
Max. +													
16	10.3 +	10.3 +	10.3 -	10.4 +	10.4 +	10.4 +	10.4 +	10.3 -	10.4 +	10.4 +	10.4 +	10.4 +	16
17	10.3 +	10.3 +	10.3 -	10.4 +	10.4 +	10.4 +	10.4 +	10.3 -	10.4 +	10.4 +	10.4 +	10.4 +	17
18	10.3 +	10.3 +	10.3 -	10.4 +	10.3 -	10.4 +	10.4 +	10.3 -	10.4 +	10.4 +	10.4 +	10.4 +	18
19	10.3 +	10.3 +	10.3 -	10.4 +	10.3 -	10.4 +	10.4 +	10.3 -	10.4 +	10.4 +	10.4 +	10.4 +	19
20	10.3 +	10.3 +	10.4 +	10.4 +	10.3 -	10.4 +	10.4 +	10.3 -	10.4 +	10.4 +	10.4 +	10.4 +	20
Min. -													
21	10.3 +	10.3 +	10.4 +	10.4 +	10.3 -	10.4 +	10.4 +	10.3 -	10.4 +	10.4 +	10.4 +	10.4 +	21
22	10.3 +	10.3 +	10.4 +	10.4 +	10.4 +	10.4 +	10.4 +	10.4 +	10.4 +	10.4 +	10.4 +	10.4 +	22
23	10.3 +	10.3 +	10.4 +	10.4 +	10.4 +	10.4 +	10.4 +	10.4 +	10.4 +	10.4 +	10.4 +	10.4 +	23
24	10.3 +	10.3 +	10.4 +	10.4 +	10.4 +	10.4 +	10.4 +	10.4 +	10.4 +	10.4 +	10.4 +	10.4 +	24
25	10.3 +	10.3 +	10.4 +	10.4 +	10.4 +	10.4 +	10.4 +	10.4 +	10.4 +	10.4 +	10.4 +	10.4 +	25
26	10.3 +	10.3 +	10.4 +	10.4 +	10.4 +	10.4 +	10.4 +	10.4 +	10.4 +	10.4 +	10.4 +	10.4 +	26
27	10.3 +	10.3 +	10.4 +	10.4 +	10.4 +	10.4 +	10.4 +	10.4 +	10.4 +	10.4 +	10.4 +	10.4 +	27
28	10.3 +	10.3 +	10.4 +	10.4 +	10.4 +	10.4 +	10.4 +	10.4 +	10.4 +	10.4 +	10.4 +	10.4 +	28
29	10.3 +		10.4 +	10.4 +	10.4 +	10.4 +	10.3 -	10.4 +	10.4 +	10.4 +	10.4 +	10.4 +	29
30	10.3 +		10.4 +	10.4 +	10.4 +	10.4 +	10.4 +	10.4 +	10.4 +	10.4 +	10.4 +	10.4 +	30
31	10.3 +		10.4 +	10.4 +	10.4 +		10.4 +	10.4 +		10.4 +		10.4 +	31
Monatsmittel	10.3 -	10.3 -	10.3 -	10.4 +	10.4 +	10.4 +	10.4 +	10.4 +	10.4 +	10.4 +	10.4 +	10.4 +	
Maximum	10.4 +	10.4 +	10.4 +	10.4 +	10.4 +	10.4 +	10.4 +	10.4 +	10.4 +	10.4 +	10.4 +	10.4 +	
Datum	01.01	01.02	01.03	01.04	01.05	01.06	01.07	01.08	01.09	01.10	01.11	01.12	
Minimum	10.3 +	10.3 +	10.3 +	10.3 +	10.3 +	10.3 +	10.3 +	10.3 +	10.3 +	10.3 +	10.3 +	10.3 +	
Datum	01.01	01.02	01.03	01.04	01.05	01.06	02.07	01.08	01.09	31.10	03.11	01.12	
Amplitude	0.1	0.1	0.1	0.1	0.1	0.1	0.1	0.1	0.1	0.1	0.1	0.1	
Jahr 2014	Mittel	10.4 °C		Maximum	10.4 (01.Jan)		Minimum	10.3 (01.Jan)		Amplitude	0.1 °C		



Periode	2003 - 2014												
Monatsmittel	10.3 +	10.3 +	10.3 +	10.2 -	10.2 -	10.2 -	10.3 +	10.3 +	10.3 +	10.3 +	10.3 +	10.3 +	10.3 +
Maximum	10.4 -	10.4 -	10.4 -	10.4 -	10.6	10.4 -	10.4 -	11.0 +	10.4 -	10.4 -	10.4 -	10.4 -	10.4 -
Jahr	2011	2010	2010	2010	2012	2010	2009	2007	2009	2008	2009	2009	2009
Minimum	10.1 +	10.0	10.0	9.5 -	9.7	10.0	10.1 +	10.1 +	10.1 +	10.0	10.1 +	10.1 +	10.1 +
Jahr	2004	2013	2009	2006	2006	2006	2004	2004	2003	2003	2003	2003	2003
Amplitude	0.2	0.3	0.3	0.7	0.3	0.3	0.2	0.8 +	0.2	0.2	0.1 -	0.2	0.2
Jahr	2007	2013	2009	2006	2006	2013	2013	2007	2006	2003	2007	2006	2006
Periode	Mittel	10.3 °C		Maximum	11.0 (09.Aug 2007)		Minimum	9.5 (11.Apr 2006)		Amplitude	1.5 °C		

Darstellung der letzten 12 Jahre

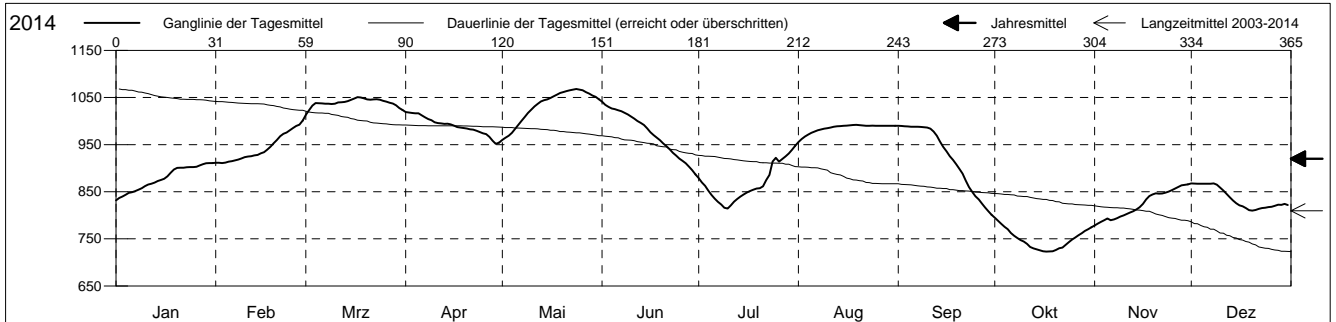


Leitfähigkeit

Birstal
 Muttenz 21.J.01 Asprain
 Abstichpunkt: 0.00 m ü.M.
 OK Terrain: 0.00 m ü.M.

Amt für Umweltschutz und Energie
Kanton Basel-Landschaft
 Koordinaten: 0.00 / 0.00

2014	Januar	Februar	März	April	Mai	Juni	Juli	August	September	Oktober	November	Dezember	
1	832 -	911 -	1013 -	1019 +	960 -	1041 +	879	955 -	990 +	795 +	779 -	868 +	1
2	837	912	1023	1018	965	1035	870	962	990 +	789	782	867	2
3	840	911 -	1033	1017	969	1030	863	967	989	782	786	867	3
4	843	912	1038	1017	975	1027	852	971	989	776	790	867	4
5	848	914	1038	1016	984	1025	843	975	988	771	793	867	5
Tagesmittel													
6	849	915	1038	1012	992	1023	835	978	988	763	790	867	6
7	852	917	1037	1008	1001	1021	829	980	988	756	791	867	7
8	854	918	1037	1004	1009	1018	823	982	988	752	794	868 +	8
9	858	921	1036	1002	1017	1014	816	984	987	747	797	865	9
10	862	924	1037	998	1024	1010	814 -	985	986	744	800	859	10
11	865	925	1040	996	1031	1005	821	986	984	739	803	853	11
12	867	925	1040	995	1037	1000	829	988	978	733	806	845	12
13	869	927	1041	994	1042	996	835	989	969	730	809	838	13
14	873	928	1042	994	1044	992	840	989	957	728	813	831	14
15	875	932	1045	993	1046	984	844	990	945	726	817	826	15
Max. +													
16	878	934	1048	990	1049	976	849	991	935	724	824	821	16
17	882	940	1051 +	987	1053	970	852	991	926	723 -	834	819	17
18	891	946	1050	986	1056	965	854	992 +	918	723 -	841	815	18
19	897	953	1049	985	1060	960	857	992 +	908	723 -	844	811	19
20	901	960	1046	984	1062	953	858	991	899	726	846	810 -	20
Min. -													
21	901	968	1046	982	1064	947	862	991	889	730	846	811	21
22	901	973	1046	982	1065	941	875	990	873	732	846	814	22
23	902	976	1046	980	1067	933	886	990	860	737	848	815	23
24	902	981	1045	977	1068 +	927	914	990	850	743	851	816	24
25	902	985	1043	974	1067	920	922	990	841	748	854	818	25
26	903	990	1041	972	1065	916	914	990	834	753	857	818	26
27	906	992	1039	967	1061	911	920	990	825	758	860	820	27
28	908	1001 +	1037	958	1058	903	925	990	816	762	864	822	28
29	910		1033	952 -	1054	896	931	990	809	767	864	822	29
30	911 +		1028	954	1051	887 -	939	990	801 -	771	866 +	824	30
31	911 +		1024		1046		947 +	990		775		822	31
Monatsmittel	878	942	1039 +	990	1034	974	868	985	923	749 -	823	837	
Maximum	911	1006	1052	1024	1068 +	1046	951	992	990	802 -	867	869	
Datum	29.01	28.02	17.03	01.04	23.05	01.06	31.07	17.08	01.09	01.10	30.11	08.12	
Minimum	831	911	1008 +	945	957	882	810	951	796	719 -	777	805	
Datum	01.01	01.02	01.03	29.04	01.05	30.06	09.07	01.08	30.09	18.10	01.11	19.12	
Amplitude	80	95	44	79	111	164	141	41	194	83	90	64	
Jahr 2014	Mittel	920 µs/cm		Maximum	1068 (23.Mai)		Minimum	719 (18.Okt)		Amplitude	349 µs/cm		



Periode	2003 - 2014												
Monatsmittel	818	841	895	932 +	918	858	786	750	737	706 -	728	767	
Maximum	1117	1123	1068	1116	1141	1171 +	1169	1072	1041	1043	906 -	1122	
Jahr	2013	2013	2007	2005	2005	2013	2013	2007	2007	2006	2012	2012	
Minimum	680	703	716	720 +	672	619	618	587 -	587 -	597	601	609	
Jahr	2006	2006	2008	2012	2011	2011	2011	2010	2011	2008	2009	2011	
Amplitude	158	241	247	322	313	239	274	356 +	194	208	131 -	244	
Jahr	2004	2013	2006	2008	2010	2005	2013	2007	2014	2007	2006	2012	
Periode	Mittel	809 µs/cm		Maximum	1171 (23.Jun 2013)		Minimum	587 (15.Aug 2010)		Amplitude	584 µs/cm		

Darstellung der letzten 12 Jahre

