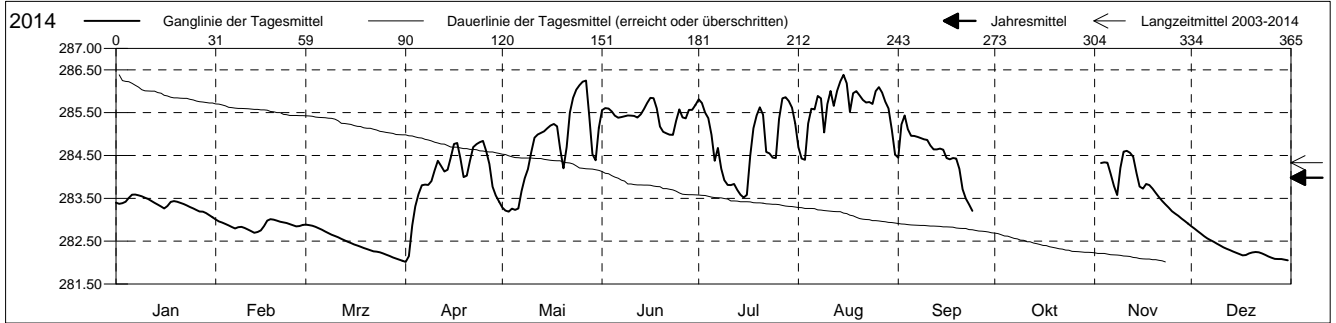


Grundwasserstände

Birstal
 Aesch 11.J.1 Streif
 Abstichpunkt: 0.00 m ü.M.
 OK Terrain: 0.00 m ü.M.

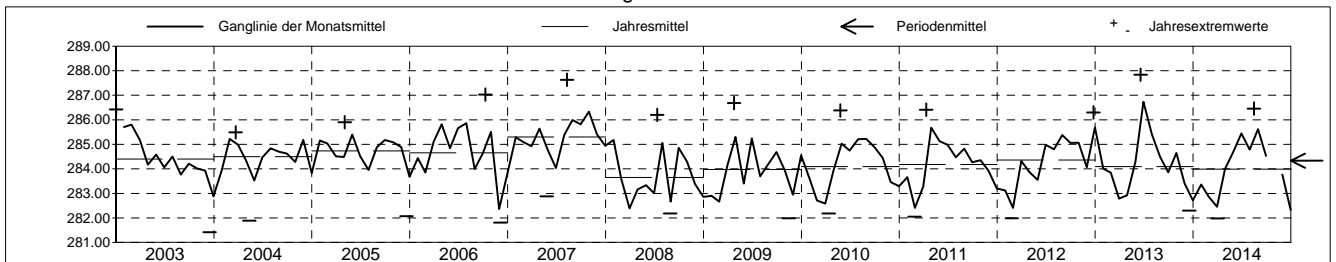
Amt für Umweltschutz und Energie
Kanton Basel-Landschaft
 Koordinaten: 0.00 / 0.00

2014	Januar	Februar	März	April	Mai	Juni	Juli	August	September	Oktober	November	Dezember	
1	283.40	283.01	282.88 +	282.01 -	283.29	285.56	285.81	284.69	284.45			282.85 +	1
2	283.37	282.96	282.88 +	282.15	283.21	285.61	285.73	284.43	285.23			282.79	2
3	283.39	282.93	282.86 +	282.87	283.19 -	285.59	285.50	284.40 -	285.43 +		284.33	282.74	3
4	283.42	282.90	282.83	283.31	283.26	285.53	285.37	285.25	285.11		284.34	282.68	4
5	283.51	282.87	282.80	283.60	283.23	285.43	284.98	285.59	284.96		284.33	282.62	5
Tagesmittel													
6	283.59 +	282.83	282.76	283.80	283.26	285.38	284.38	285.58	284.96		284.07	282.57	6
7	283.59 +	282.80	282.73	283.82	283.67	285.40	284.68	285.89	284.93		283.79	282.52	7
8	283.57	282.83	282.69	283.81	283.97	285.42	284.19	285.84	284.91		283.58	282.48	8
9	283.55	282.83	282.65	283.90	284.18	285.43	283.92	285.04	284.88		284.21	282.44	9
10	283.52	282.81	282.62	284.15	284.58	285.43	283.81	285.70	284.86		284.59	282.40	10
11	283.48	282.77	282.59	284.38	284.92	285.42	283.81	286.01	284.73		284.61 +	282.36	11
12	283.44	282.73	282.55	284.26	284.99	285.38	283.83	285.66	284.64		284.57	282.32	12
13	283.40	282.69 -	282.52	284.13	285.02	285.46	283.70	286.01	284.64		284.47	282.29	13
14	283.35	282.71	282.49	284.17	285.06	285.58	283.59	286.23	284.66		284.09	282.26	14
15	283.31	282.75	282.45	284.44	285.14	285.73	283.52 -	286.38 +	284.63		283.78	282.23	15
Max. +													
16	283.26	282.85	282.42	284.77	285.20	285.85 +	283.58	286.18	284.44		283.73	282.20	16
17	283.32	282.98	282.40	284.79	285.24	285.84	284.49	285.52	284.41		283.83	282.17	17
18	283.42	283.02 +	282.37	284.43	285.18	285.60	285.14	285.95	284.44		283.81	282.18	18
19	283.43	283.00	282.34	284.00	284.66	285.18	285.44	286.00	284.43		283.73	282.22	19
20	283.42	282.98	282.31	284.03	284.20	285.05	285.62	285.90	284.18		283.63	282.24	20
Min. -													
21	283.39	282.95	282.29	284.38	284.70	285.02	285.45	285.80	283.71		283.53	282.25	21
22	283.37	282.94	282.26	284.69	285.50	284.99	284.58	285.74	283.50		283.44	282.24	22
23	283.33	282.92	282.25	284.76	285.84	284.98 -	284.55	285.75	283.36		283.36	282.21	23
24	283.30	282.90	282.24	284.81	286.04	285.31	284.45	285.70	283.21		283.28	282.18	24
25	283.26	282.87	282.21	284.84 +	286.14	285.58	284.44	286.00			283.20	282.14	25
26	283.22	282.85	282.18	284.61	286.22	285.39	285.35	286.10			283.14	282.11	26
27	283.19	282.85	282.15	284.30	286.25 +	285.37	285.84	285.97			283.09	282.09	27
28	283.19	282.88	282.12	283.77	285.42	285.57	285.86 +	285.76			283.03	282.08	28
29	283.16		282.09	283.56	284.53	285.57	285.77	285.60			282.97	282.08	29
30	283.11		282.07	283.42	284.39	285.68	285.62	285.10			282.91	282.07	30
31	283.06 -		282.04 -		285.15		285.25	284.52				282.05 -	31
Monatsmittel	283.36	282.87	282.45	284.00	284.70	285.44	284.78	285.62 +	284.53		283.77	282.32 -	
Maximum	283.60	283.03	282.89	284.86	286.30	285.87	285.89	286.46 +	285.46		284.63	282.88 -	
Datum	06.01	01.02	01.03	26.04	27.05	17.06	28.07	15.08	03.09		11.11	01.12	
Amplitude	0.56	0.37	0.86	2.88	3.14	0.92	2.45	2.24	2.31		1.74	0.83	
Jahr 2014	Mittel	283.98 m ü.M.		Maximum	286.46 (15.Aug)		Minimum	281.98 (02.Apr)		Amplitude	4.48 m		



Periode	2003 - 2014												
Monatsmittel	284.20	283.79	283.89	284.44	284.38	284.82	284.83 +	284.65	284.72	284.72	283.89	283.65 -	
Maximum	286.42	286.06	286.45	286.68	286.48	287.83 +	286.27	287.63	286.53	287.03	286.03 -	286.30	
Jahr	2003	2003	2006	2009	2013	2013	2013	2007	2007	2006	2007	2012	
Minimum	282.55 +	281.99	282.03	281.98	281.89	282.43	282.33	281.90	281.83	282.51	281.86	281.42 -	
Jahr	2009	2012	2014	2014	2004	2008	2005	2003	2003	2009	2006	2003	
Amplitude	2.67 -	3.13	3.30	3.76 +	3.43	3.06	3.30	2.96	3.20	3.75	3.65	3.71	
Jahr	2013	2008	2009	2010	2013	2007	2005	2007	2006	2006	2011	2006	
Periode	Mittel	284.33 m ü.M.		Maximum	287.83 (19.Jun 2013)		Minimum	281.42 (16.Dez 2003)		Amplitude	6.41 m		

Darstellung der letzten 12 Jahre

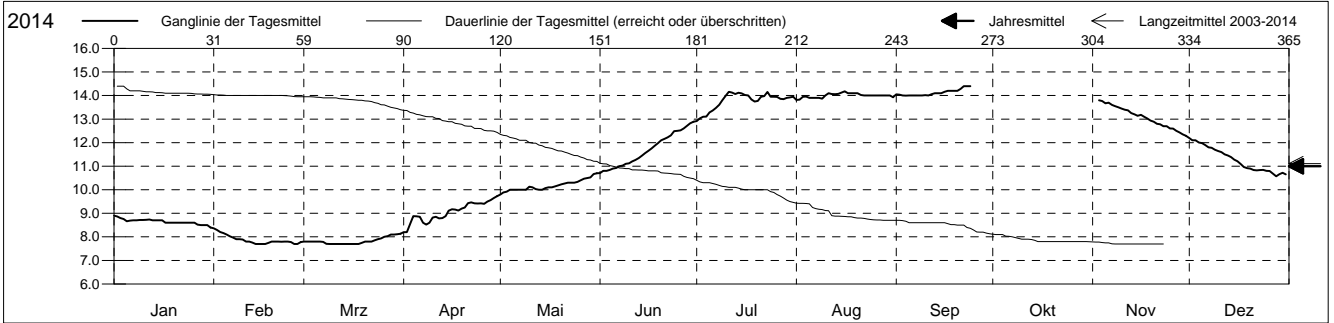


Grundwassertemperatur

Birstal
 Aesch 11.J.1 Streif
 Abstichpunkt: 0.00 m ü.M.
 OK Terrain: 0.00 m ü.M.

Amt für Umweltschutz und Energie
Kanton Basel-Landschaft
 Koordinaten: 0.00 / 0.00

2014	Januar	Februar	März	April	Mai	Juni	Juli	August	September	Oktober	November	Dezember	
1	8.9 +	8.4 +	7.8	8.2 -	9.8 -	10.7 -	12.9 -	13.8 -	14.1			12.2 +	1
2	8.9 +	8.3	7.8	8.2 -	9.9	10.8	13.0	13.8 -	14.0			12.1	2
3	8.8	8.2	7.8	8.6	9.9	10.8	13.1	13.9	14.0		13.8 +	12.1	3
4	8.8	8.2	7.8	8.9	10.0	10.8	13.1	14.0	14.0		13.8 +	12.0	4
5	8.7	8.1	7.8	8.9	10.0	10.9	13.3	13.9	14.0		13.7	12.0	5
Tagesmittel													
6	8.7	8.0	7.8	8.9	10.0	10.9	13.4	13.9	14.0		13.7	11.9	6
7	8.7	8.0	7.8	8.6	10.0	11.0	13.5	13.9	14.0		13.6	11.8	7
8	8.7	7.9	7.7 -	8.5	10.0	11.0	13.6	13.9	14.0		13.5	11.8	8
9	8.7	7.9	7.7 -	8.6	10.0	11.1	13.8	13.9	14.0		13.5	11.7	9
10	8.7	7.9	7.7 -	8.8	10.1	11.1	14.0	14.0	14.0		13.4	11.6	10
11	8.7	7.8	7.7 -	8.9	10.1	11.2	14.2 +	14.1	14.0		13.4	11.6	11
12	8.7	7.8	7.7 -	8.8	10.0	11.3	14.1	14.1	14.1		13.4	11.5	12
13	8.7	7.8	7.7 -	8.8	10.0	11.3	14.1	14.1	14.1		13.3	11.5	13
14	8.7	7.7 -	7.7 -	8.9	10.0	11.4	14.1	14.1	14.1		13.2	11.4	14
15	8.7	7.7 -	7.7 -	9.1	10.1	11.6	14.1	14.1	14.1		13.1	11.3	15
Max. +													
16	8.7	7.7 -	7.7 -	9.2	10.1	11.6	14.0	14.2 +	14.2		13.2	11.2	16
17	8.6	7.7 -	7.7 -	9.2	10.1	11.8	14.0	14.1	14.2		13.1	11.1	17
18	8.6	7.7 -	7.7 -	9.1	10.1	11.9	13.8	14.1	14.2		13.0	11.0	18
19	8.6	7.8	7.7 -	9.2	10.2	12.0	13.7	14.1	14.2		12.9	10.9	19
20	8.6	7.8	7.8	9.3	10.2	12.1	13.8	14.1	14.2		12.9	10.9	20
Min. -													
21	8.6	7.8	7.8	9.4	10.3	12.2	13.9	14.0	14.3		12.8	10.8	21
22	8.6	7.8	7.8	9.5	10.3	12.2	14.0	14.0	14.4 +		12.8	10.8	22
23	8.6	7.8	7.9	9.4	10.3	12.3	14.1	14.0	14.4 +		12.7	10.8	23
24	8.6	7.8	7.9	9.4	10.3	12.5	13.9	14.0	14.4 +		12.7	10.8	24
25	8.6	7.8	7.9	9.4	10.3	12.5	13.9	14.0			12.6	10.8	25
26	8.6	7.7 -	8.0	9.4	10.4	12.5	13.9	14.0			12.6	10.8	26
27	8.5	7.7 -	8.0	9.5	10.5	12.6	13.9	14.0			12.5	10.7	27
28	8.5	7.8	8.1 +	9.6	10.5	12.7	13.8	14.0			12.4	10.6 -	28
29	8.5		8.1 +	9.6	10.5	12.8	13.9	14.0			12.4	10.7	29
30	8.5		8.1 +	9.7 +	10.7 +	12.9 +	13.9	14.0			12.3	10.7	30
31	8.4 -		8.1 +		10.7 +		13.9	13.9				10.6 -	31
Monatsmittel	8.7	7.9	7.8 -	9.0	10.2	11.7	13.8	14.0	14.1 +		13.1	11.3	
Maximum	8.9	8.4	8.2 -	9.8	10.8	12.9	14.3	14.2	14.4 +		13.8	12.3	
Datum	01.01	01.02	30.03	30.04	31.05	29.06	11.07	15.08	21.09		03.11	01.12	
Minimum	8.4	7.7 -	7.7 -	8.2	9.8	10.7	12.9	13.8	13.9 +		12.2	10.5	
Datum	31.01	13.02	07.03	01.04	01.05	01.06	01.07	01.08	04.09		30.11	27.12	
Amplitude	0.5	0.7	0.5	1.6	1.0	2.2	1.4	0.4	0.5		1.6	1.8	
Jahr 2014	Mittel	11.0 °C		Maximum	14.4 (21.Sep)		Minimum	7.7 (13.Feb)		Amplitude	6.7 °C		



Periode	2003 - 2014												
Monatsmittel	8.4	7.3	7.2 -	8.3	10.0	11.8	13.6	14.7	14.8 +	14.0	12.2	10.0	
Maximum	10.2	9.3	8.9 -	9.9	12.6	14.4	15.7	16.3	16.7 +	15.8	14.2	13.0	
Jahr	2006	2007	2007	2007	2011	2011	2011	2008	2012	2009	2011	2005	
Minimum	5.6 -	5.6 -	5.8	6.9	7.6	9.1	11.4	12.8	13.5 +	12.2	9.6	7.8	
Jahr	2009	2009	2009	2013	2008	2008	2006	2005	2005	2008	2007	2010	
Amplitude	2.3	2.1	1.4 -	2.3	2.8	3.0	3.1	2.7	2.2	1.9	2.9	3.2 +	
Jahr	2009	2012	2009	2011	2011	2008	2010	2007	2008	2008	2012	2011	
Periode	Mittel	11.1 °C		Maximum	16.7 (02.Sep 2012)		Minimum	5.6 (23.Jan 2009)		Amplitude	11.1 °C		

Darstellung der letzten 12 Jahre

