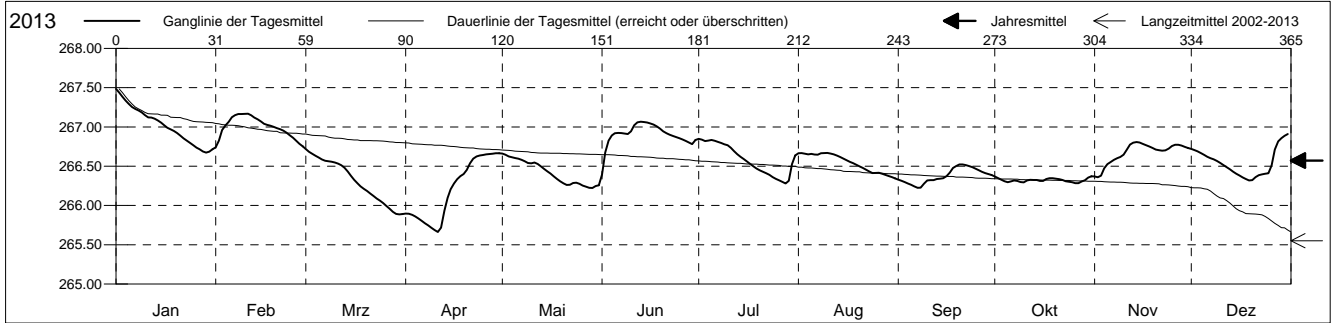


**Grundwasserstände**

Ergolzthal  
 Pratteln 41.J.1 Hülfen  
 Abstichpunkt: 0.00 m ü.M.  
 OK Terrain: 0.00 m ü.M.

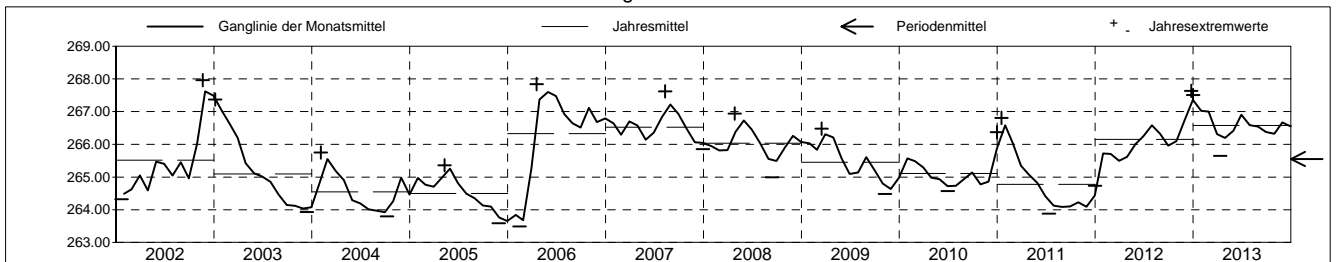
**Amt für Umweltschutz und Energie**  
**Kanton Basel-Landschaft**  
 Koordinaten: 0.00 / 0.00

2013	Januar	Februar	März	April	Mai	Juni	Juli	August	September	Oktober	November	Dezember	
1	267.49 +	266.74 -	266.72 +	265.90	266.66 +	266.39 -	266.85 +	266.67 +	266.33	266.37 +	266.37	266.72	1
2	267.44	266.83	266.68	265.89	266.65	266.68	266.84	266.67 +	266.32	266.35	266.36 -	266.71	2
3	267.38	266.96	266.66	265.88	266.62	266.83	266.82	266.66	266.30	266.33	266.38	266.69	3
4	267.34	267.02	266.63	265.86	266.61	266.89	266.83	266.65	266.28	266.31	266.47	266.67	4
5	267.29	267.07	266.61	265.83	266.60	266.92	266.83	266.66	266.26	266.30	266.53	266.65	5
Tagesmittel													
6	267.25	267.12	266.59	265.80	266.59	266.92	266.82	266.65	266.24	266.31	266.55	266.62	6
7	267.23	267.15	266.57	265.77	266.58	266.92	266.81	266.65	266.22 -	266.32	266.58	266.60	7
8	267.21	267.16	266.56	265.75	266.56	266.92	266.80	266.66	266.23	266.31	266.60	266.59	8
9	267.18	267.16	266.56	265.72	266.54	266.91	266.78	266.67 +	266.28	266.30	266.62	266.57	9
10	267.15	267.17 +	266.55	265.69	266.54	266.94	266.77	266.67 +	266.32	266.29	266.65	266.54	10
11	267.12	267.17 +	266.53	265.66 -	266.55	267.02	266.73	266.66	266.32	266.32	266.71	266.51	11
12	267.12	267.15	266.51	265.72	266.53	267.06	266.69	266.65	266.32	266.33	266.77	266.49	12
13	267.11	267.12	266.48	265.93	266.50	267.07 +	266.65	266.63	266.34	266.32	266.80	266.46	13
14	267.08	267.10	266.43	266.10	266.47	267.06	266.62	266.62	266.34	266.32	266.81 +	266.43	14
15	267.06	267.07	266.38	266.21	266.44	267.06	266.59	266.59	266.35	266.31	266.80	266.40	15
Max. +													
16	267.02	267.04	266.33	266.28	266.41	267.04	266.56	266.58	266.37	266.31	266.78	266.38	16
17	266.99	267.03	266.28	266.33	266.37	267.03	266.53	266.55	266.42	266.34	266.77	266.36	17
18	266.97	267.01	266.24	266.37	266.34	267.01	266.50	266.54	266.48	266.35	266.75	266.34	18
19	266.95	267.00	266.21	266.40	266.31	266.98	266.47	266.52	266.50	266.35	266.73	266.32 -	19
20	266.92	266.99	266.18	266.45	266.28	266.95	266.45	266.50	266.52 +	266.34	266.71	266.32 -	20
Min. -													
21	266.89	266.97	266.15	266.54	266.26	266.92	266.43	266.48	266.52 +	266.33	266.70	266.36	21
22	266.85	266.95	266.12	266.60	266.26	266.90	266.41	266.46	266.51	266.33	266.70	266.39	22
23	266.83	266.92	266.09	266.62	266.29	266.89	266.39	266.43	266.50	266.31	266.70	266.40	23
24	266.80	266.89	266.06	266.64	266.29	266.87	266.36	266.41	266.49	266.30	266.72	266.41	24
25	266.77	266.86	266.03	266.64	266.27	266.86	266.34	266.42	266.47	266.30	266.76	266.41	25
26	266.74	266.82	266.00	266.65	266.25	266.84	266.32	266.42	266.45	266.28 -	266.77	266.51	26
27	266.71	266.79	265.96	266.65	266.24	266.82	266.30	266.40	266.43	266.28 -	266.77	266.71	27
28	266.69	266.75	265.92	266.66 +	266.22 -	266.80	266.28 -	266.39	266.41	266.31	266.76	266.82	28
29	266.67 -		265.89 -	266.66 +	266.22 -	266.78	266.32	266.38	266.40	266.32	266.75	266.86	29
30	266.69		265.89 -	266.66 +	266.25	266.83	266.53	266.36	266.39	266.36	266.73	266.89	30
31	266.71		265.89 -		266.26		266.64	266.34 -		266.37 +		266.91 +	31
Monatsmittel	267.02 +	267.00	266.31	266.20 -	266.42	266.90	266.59	266.55	266.38	266.32	266.67	266.55	
Maximum	267.50 +	267.17	266.74	266.67	266.66	267.07	266.85	266.67	266.53	266.38 -	266.81	266.92	
Datum	01.01	10.02	01.03	29.04	01.05	13.06	01.07	10.08	20.09	01.10	15.11	31.12	
Amplitude	0.84	0.44	0.85	1.02	0.45	0.79	0.58	0.34	0.31	0.10	0.46	0.60	
Jahr 2013	Mittel	266.57 m ü.M.		Maximum	267.50 (01.Jan)		Minimum	265.65 (12.Apr)		Amplitude	1.86 m		



Periode	2002 - 2013												
Monatsmittel	265.72 +	265.62	265.64	265.69	265.70	265.59	265.45	265.43	265.24 -	265.35	265.53	265.65	
Maximum	267.50	267.17	266.85 -	267.84	267.73	267.69	267.22	267.62	267.20	267.25	267.96 +	267.80	
Jahr	2013	2013	2007	2006	2006	2006	2006	2007	2007	2006	2002	2002	
Minimum	263.63	263.49 -	263.80	264.47 +	264.06	264.04	263.88	263.86	263.82	263.80	263.59	263.60	
Jahr	2006	2006	2006	2004	2004	2004	2011	2004	2004	2004	2005	2005	
Amplitude	1.77	0.83	2.66 +	1.38	1.28	0.80 -	0.97	0.87	0.91	1.60	1.09	1.36	
Jahr	2004	2011	2006	2006	2002	2007	2009	2007	2008	2004	2002	2010	
Periode	Mittel	265.55 m ü.M.		Maximum	267.96 (20.Nov 2002)		Minimum	263.49 (14.Feb 2006)		Amplitude	4.47 m		

Darstellung der letzten 12 Jahre

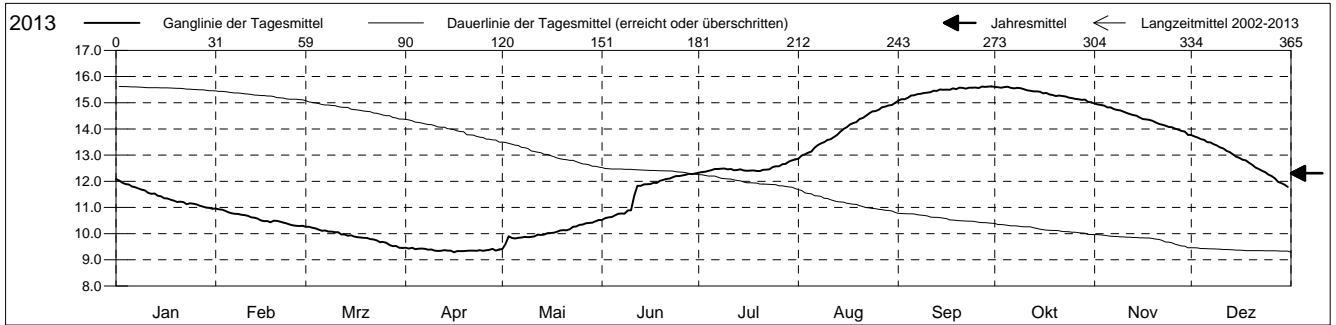


**Grundwassertemperatur**

Ergolzthal  
 Pratteln 41.J.1 Hülften  
 Abstichpunkt: 0.00 m ü.M.  
 OK Terrain: 0.00 m ü.M.

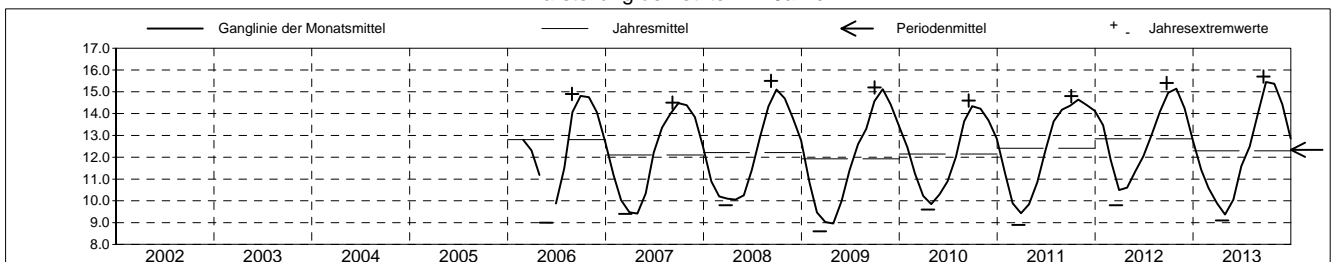
**Amt für Umweltschutz und Energie**  
**Kanton Basel-Landschaft**  
 Koordinaten: 0.00 / 0.00

2013	Januar	Februar	März	April	Mai	Juni	Juli	August	September	Oktober	November	Dezember	
1	12.1 +	11.0 +	10.3 +	9.5 +	9.4 -	10.5 -	12.3 -	12.9 -	15.1 -	15.6 +	15.0 +	13.8 +	1
2	12.0	10.9	10.3 +	9.4	9.6	10.6	12.4	13.0	15.1 -	15.6 +	14.9	13.7	2
3	11.9	10.9	10.2	9.5 +	9.9	10.6	12.4	13.0	15.1 -	15.6 +	14.9	13.7	3
4	11.9	10.9	10.2	9.4	9.8	10.6	12.4	13.1	15.2	15.6 +	14.9	13.6	4
5	11.9	10.8	10.2	9.4	9.8	10.7	12.4	13.1	15.3	15.6 +	14.8	13.6	5
Tagesmittel													
6	11.8	10.8	10.1	9.4	9.8	10.8	12.5	13.3	15.3	15.6 +	14.8	13.5	6
7	11.8	10.8	10.1	9.4	9.8	10.8	12.5	13.4	15.3	15.6 +	14.8	13.5	7
8	11.7	10.8	10.1	9.4	9.9	10.8	12.5	13.4	15.3	15.6 +	14.7	13.4	8
9	11.7	10.7	10.1	9.4	9.9	10.9	12.5	13.5	15.4	15.6 +	14.7	13.4	9
10	11.6	10.7	10.1	9.4	9.9	10.9	12.5	13.6	15.4	15.5	14.7	13.3	10
11	11.6	10.7	10.1	9.3 -	9.9	11.4	12.5	13.6	15.4	15.5	14.6	13.3	11
12	11.5	10.6	10.0	9.3 -	10.0	11.8	12.4	13.7	15.5	15.5	14.6	13.2	12
13	11.5	10.6	10.0	9.4	9.9	11.8	12.4	13.8	15.5	15.4	14.5	13.1	13
14	11.4	10.6	9.9	9.3 -	10.0	11.9	12.5	13.9	15.5	15.4	14.5	13.0	14
15	11.4	10.5	9.9	9.4	10.0	11.9	12.4	14.0	15.5	15.4	14.4	12.9	15
Max. +													
16	11.3	10.5	9.9	9.3 -	10.0	11.9	12.4	14.1	15.5	15.4	14.4	12.9	16
17	11.3	10.5	9.9	9.3 -	10.0	11.9	12.4	14.2	15.5	15.4	14.4	12.8	17
18	11.3	10.4	9.9	9.3 -	10.1	11.9	12.4	14.2	15.6 +	15.3	14.3	12.8	18
19	11.3	10.5	9.8	9.3 -	10.1	12.0	12.4	14.3	15.5	15.3	14.3	12.7	19
20	11.2	10.5	9.8	9.3 -	10.1	12.1	12.4	14.4	15.6 +	15.3	14.2	12.6	20
Min. -													
21	11.2	10.5	9.8	9.4	10.1	12.1	12.4	14.4	15.6 +	15.3	14.2	12.5	21
22	11.2	10.4	9.8	9.3 -	10.2	12.1	12.4	14.5	15.5	15.3	14.2	12.5	22
23	11.1	10.4	9.7	9.3 -	10.3	12.2	12.5	14.6	15.6 +	15.2	14.1	12.4	23
24	11.2	10.3 -	9.7	9.4	10.3	12.2	12.5	14.7	15.6 +	15.2	14.1	12.3	24
25	11.1	10.3 -	9.7	9.3 -	10.3	12.2	12.6	14.7	15.6 +	15.2	14.1	12.3	25
26	11.1	10.3 -	9.6	9.4	10.3	12.2	12.6	14.7	15.6 +	15.1	14.0	12.2	26
27	11.1	10.3 -	9.6	9.4	10.4	12.3 +	12.7	14.8	15.6 +	15.1	14.0	12.1	27
28	11.0 -	10.3 -	9.5 -	9.4	10.4	12.3 +	12.7	14.9	15.6 +	15.1	13.9	12.0	28
29	11.0 -		9.5 -	9.4	10.4	12.3 +	12.8 +	14.9	15.6 +	15.1	13.9	11.9	29
30	11.0 -		9.5 -	9.4	10.5 +	12.3 +	12.8 +	14.9	15.6 +	15.0 -	13.8 -	11.9	30
31	11.0 -		9.5 -		10.5 +		12.8 +	15.0 +		15.0 -		11.8 -	31
Monatsmittel	11.4	10.6	9.9	9.4 -	10.1	11.6	12.5	14.0	15.4 +	15.4 +	14.4	12.9	
Maximum	12.3	11.0	10.4	9.6 -	10.6	12.4	13.0	15.1	15.7 +	15.7 +	15.1	13.9	
Datum	01.01	01.02	01.03	01.04	29.05	28.06	30.07	31.08	20.09	01.10	01.11	01.12	
Minimum	10.8	10.1	9.3	9.1 -	9.2	10.4	12.2	12.7	14.9 +	14.8	13.7	11.6	
Datum	30.01	27.02	29.03	19.04	02.05	01.06	01.07	01.08	01.09	31.10	30.11	31.12	
Amplitude	1.5	0.9	1.1	0.5	1.4	2.0	0.8	2.4	0.8	0.9	1.4	2.3	
Jahr 2013	Mittel	12.3 °C		Maximum	15.7 (20.Sep)		Minimum	9.1 (19.Apr)		Amplitude	6.6 °C		



Periode	2002 - 2013												
Monatsmittel	11.6	10.8	10.1	9.9 -	10.5	11.5	12.7	14.0	14.8 +	14.8 +	14.1	13.0	
Maximum	14.1	12.9	12.7	11.8 -	11.9	13.5	14.3	15.1	15.7 +	15.7 +	15.1	14.5	
Jahr	2012	2006	2006	2006	2012	2011	2011	2013	2013	2013	2013	2011	
Minimum	9.9	8.9	8.6 -	8.7	9.0	9.3	10.4	12.6	13.6	13.9 +	13.1	11.6	
Jahr	2009	2009	2009	2009	2006	2006	2006	2010	2009	2010	2008	2009	
Amplitude	2.2	1.9	1.3	1.2	1.9	2.1	2.4 +	2.4 +	1.6	1.1 -	1.6	2.3	
Jahr	2011	2012	2012	2006	2007	2011	2006	2013	2009	2008	2012	2013	
Periode	Mittel	12.3 °C		Maximum	15.7 (20.Sep 2013)		Minimum	8.6 (10.Mrz 2009)		Amplitude	7.1 °C		

Darstellung der letzten 12 Jahre

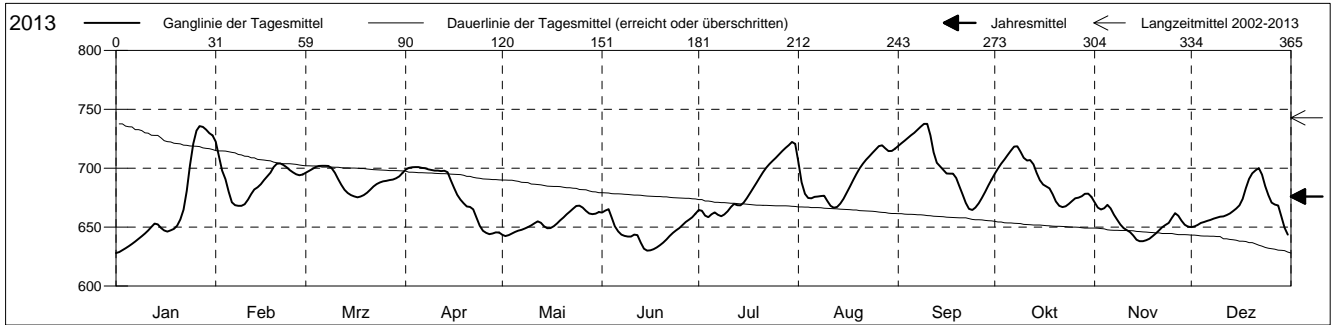


**Leitfähigkeit**

Ergolztal  
 Pratteln 41.J.1 Hülfen  
 Abstichpunkt: 0.00 m ü.M.  
 OK Terrain: 0.00 m ü.M.

**Amt für Umweltschutz und Energie**  
**Kanton Basel-Landschaft**  
 Koordinaten: 0.00 / 0.00

2013	Januar	Februar	März	April	Mai	Juni	Juli	August	September	Oktober	November	Dezember	
1	628 -	723 +	696	699	643	662	664	705	719	695	671 +	650	1
2	629	710	698	700	642 -	664	664	688	721	700	667	651	2
3	630	698	699	701 +	643	665 +	660	678	723	704	665	652	3
4	632	691	701	701 +	645	658	659 -	675	726	707	666	653	4
5	634	680	702 +	701 +	646	651	661	674	728 +	711	669	654	5
6	636	671	702 +	700	647	646	663	676	730	715	666	655	6
7	638	669	702 +	700	648	644	660	676	733	718	660	656	7
8	640	668 -	702 +	699	649	642	659 -	676	735	719 +	656	657	8
9	642	668 -	700	699	650	642	661	677	738 +	714	652	658	9
10	645	669	696	698	651	642	663	672	738 +	709	649	659	10
11	647	673	691	698	653	644	667	668	728	707	647	659	11
12	650	678	686	698	655	643	670	666 -	713	707	646	660	12
13	653	682	682	698	654	637	669	667	705	703	643	662	13
14	652	684	679	697	651	632	668	670	702	696	639	664	14
15	649	686	677	690	649	630 -	671	674	699	690	638 -	666	15
16	647	690	676	683	649	630 -	675	679	696	686	638 -	668	16
17	646	693	675 -	677	651	631	679	684	695	685	639	674	17
18	647	696	676	673	653	633	683	690	695	683	640	683	18
19	649	701	677	670	656	635	688	695	692	678	642	691	19
20	651	704	679	668	658	637	692	700	685	672	645	696	20
21	657	704	682	667	661	639	697	704	678	668	647	698	21
22	665	703	685	665	663	642	700	707	671	667 -	650	700 +	22
23	681	701	687	658	666	645	703	710	666	668	652	695	23
24	702	698	688	651	668 +	647	706	713	664 -	670	654	685	24
25	721	696	689	647	668 +	649	709	716	667	672	658	677	25
26	732	695	689	645	667	652	712	719 +	670	674	662	671	26
27	736 +	694	690	644 -	664	654	715	719 +	675	675	660	669	27
28	735	695	690	645	662	656	717	717	680	676	655	668	28
29	733		691	646	661	658	720	715	685	678	652	659	29
30	730		693	645	661	661	722 +	715	690	678	650	649	30
31	728		696		663		721	717		676		644 -	31
Monatsmittel	667	690	690	679	655	646 -	684	692	701 +	690	653	667	
Maximum	736	726	703	701	669	667 -	723	720	739 +	720	674	701	
Datum	27.01	01.02	06.03	02.04	24.05	03.06	30.07	26.08	09.09	07.10	01.11	22.12	
Minimum	628 -	668 +	675 +	644	642	630	658	666	664	667	638	642	
Datum	01.01	07.02	17.03	26.04	02.05	14.06	04.07	12.08	23.09	21.10	14.11	31.12	
Amplitude	108	58	28	57	27	37	65	54	75	53	36	59	
Jahr 2013	Mittel	676		Maximum	739 (09.Sep)		Minimum	628 (01.Jan)		Amplitude	111		



Periode	2002 - 2013												
Monatsmittel	714	739	722	708 -	728	741	751	754	767	787 +	753	745	
Maximum	856	815	797	789 -	879	883	851	854	901	911	923	942 +	
Jahr	2012	2012	2010	2010	2011	2011	2010	2011	2011	2009	2011	2011	
Minimum	628 -	668 +	654	630	631	630	643	658	664	665	638	628 -	
Jahr	2013	2013	2009	2008	2008	2013	2012	2012	2013	2012	2013	2012	
Amplitude	168 +	118	103	89	114	94	115	108	123	81 -	136	139	
Jahr	2012	2012	2008	2009	2011	2012	2010	2010	2009	2008	2009	2010	
Periode	Mittel	743		Maximum	942 (06.Dez 2011)		Minimum	628 (30.Dez 2012)		Amplitude	314		

Darstellung der letzten 12 Jahre

