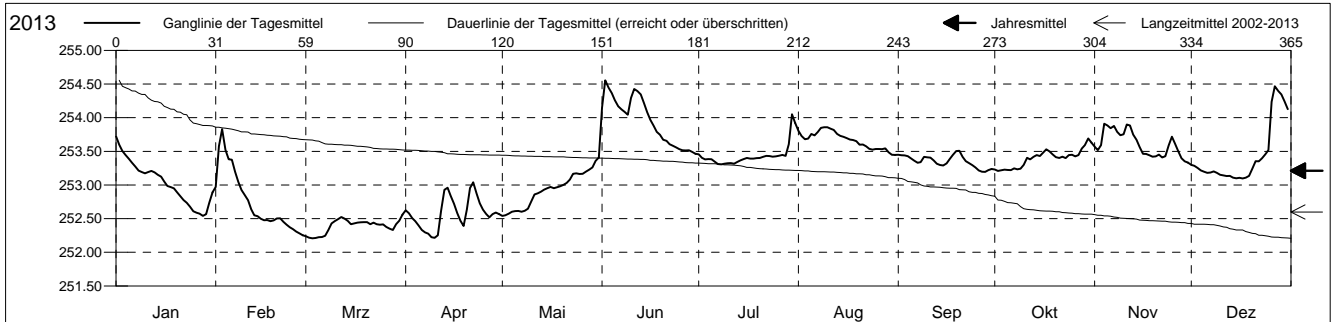


Grundwasserstände

Birstal
 Muttentz 21.J.01 Asprain
 Abstichpunkt: 0.00 m ü.M.
 OK Terrain: 0.00 m ü.M.

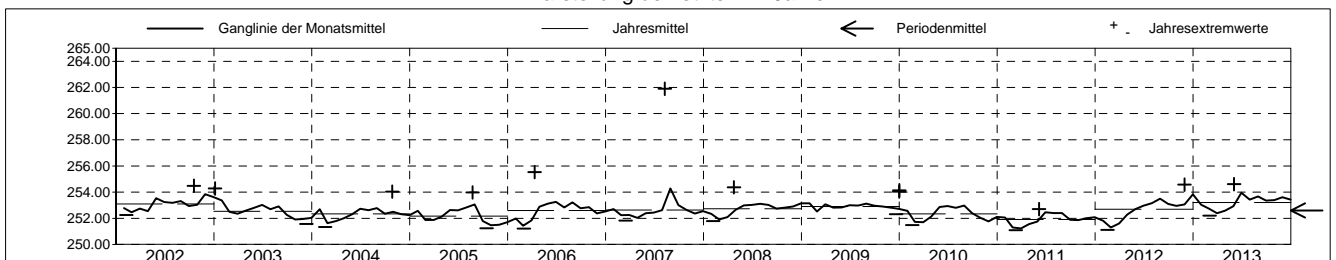
Amt für Umweltschutz und Energie
Kanton Basel-Landschaft
 Koordinaten: 0.00 / 0.00

2013	Januar	Februar	März	April	Mai	Juni	Juli	August	September	Oktober	November	Dezember	
1	253.72 +	252.97	252.24	252.62	252.54 -	254.15	253.46	253.81	253.45	253.23	253.57	253.30	1
2	253.60	253.57	252.22	252.58	252.55	254.55 +	253.40	253.73	253.44	253.21 -	253.52	253.28	2
3	253.50	253.83 +	252.21 -	252.51	252.57	254.45	253.38	253.68	253.44	253.22	253.59	253.25	3
4	253.45	253.52	252.21 -	252.46	252.60	254.36	253.39	253.69	253.43	253.23	253.91 +	253.22	4
5	253.39	253.38	252.22	252.40	252.61	254.26	253.38	253.76	253.40	253.22	253.88	253.20	5
Tagesmittel													
6	253.33	253.38	252.23	252.33	252.61	254.17	253.35	253.74	253.36	253.22	253.84	253.18	6
7	253.28	253.20	252.24	252.30	252.60	254.12	253.31 -	253.79	253.33	253.25	253.88	253.18	7
8	253.21	253.05	252.33	252.28	252.62	254.09	253.31 -	253.85	253.34	253.23	253.79	253.20	8
9	253.19	252.93	252.43	252.22 -	252.65	254.04	253.32	253.86 +	253.42	253.24	253.74	253.18	9
10	253.17	252.85	252.47	252.22 -	252.76	254.29	253.32	253.86 +	253.41	253.30	253.75	253.15	10
11	253.19	252.77	252.49	252.25	252.86	254.43	253.33	253.84	253.41	253.41	253.90	253.14	11
12	253.21	252.64	252.52	252.61	252.88	254.40	253.32	253.82	253.37	253.38	253.89	253.13	12
13	253.19	252.55	252.50	252.93	252.90	254.34	253.34	253.76	253.32	253.42	253.75	253.14	13
14	253.15	252.54	252.47	252.96	252.93	254.22	253.37	253.73	253.30	253.44	253.67	253.11	14
Max. +	253.12	252.50	252.42	252.84	252.95	254.08	253.39	253.71	253.29	253.43	253.56	253.10 -	15
16	253.05	252.48	252.43	252.72	252.97	253.97	253.40	253.70	253.32	253.48	253.46	253.11	16
17	252.98	252.48	252.44	252.58	252.95	253.88	253.39	253.67	253.39	253.53	253.46	253.10 -	17
18	252.97	252.46	252.44	252.47	252.97	253.79	253.39	253.67	253.45	253.50	253.44	253.11	18
19	252.95	252.47	252.45	252.39	252.98	253.75	253.40	253.65	253.50	253.45	253.42	253.14	19
20	252.89	252.50	252.45	252.63	253.00	253.67	253.40	253.60	253.51 +	253.41	253.42	253.24	20
Min. -													
21	252.83	252.51	252.42	252.96	253.03	253.66	253.42	253.60	253.42	253.40	253.45	253.35	21
22	252.78	252.45	252.44	253.04 +	253.08	253.61	253.43	253.58	253.35	253.42	253.41	253.35	22
23	252.74	252.41	252.42	252.87	253.17	253.58	253.43	253.54	253.33	253.40	253.43	253.40	23
24	252.68	252.37	252.41	252.73	253.17	253.56	253.42	253.52	253.30	253.44	253.59	253.45	24
25	252.61	252.34	252.42	252.63	253.16	253.53	253.43	253.53	253.26	253.45	253.72	253.52	25
26	252.59	252.31	252.38	252.57	253.17	253.52	253.44	253.54	253.22	253.43	253.61	254.24	26
27	252.57	252.28	252.35	252.52	253.20	253.51	253.45	253.53	253.20 -	253.44	253.50	254.47 +	27
28	252.54 -	252.25 -	252.33	252.57	253.23	253.52	253.43	253.54	253.20 -	253.54	253.40	254.40	28
29	252.57		252.42	252.59	253.26	253.49	253.61	253.49	253.22	253.59	253.35	254.35	29
30	252.74		252.47	252.57	253.36	253.46	253.46	253.45 -	253.24	253.69 +	253.33 -	254.24	30
31	252.89		252.56 +		253.41 +		253.92	253.45 -		253.63		254.13	31
Monatsmittel	253.04	252.75	252.39 -	252.58	252.93	253.95 +	253.43	253.67	253.35	253.40	253.61	253.43	
Maximum	253.79	253.96	252.61 -	253.07	253.63	254.61 +	254.09	253.87	253.56	253.71	253.94	254.48	
Datum	01.01	02.02	31.03	22.04	31.05	02.06	30.07	08.08	19.09	30.10	04.11	27.12	
Amplitude	1.25	1.72	0.41	0.87	1.09	1.15	0.80	0.44	0.37	0.51	0.64	1.39	
Jahr 2013	Mittel	253.21 m ü.M.		Maximum	254.61 (02.Jun)		Minimum	252.20 (03.Mrz)		Amplitude	2.41 m		



Periode	2002 - 2013												
Monatsmittel	252.59	251.97 -	252.08	252.35	252.74	252.97	252.89	253.19 +	252.63	252.53	252.54	252.67	
Maximum	254.28	253.96 -	254.22	255.53	254.40	254.61	254.09	261.90 +	254.43	254.48	254.57	254.48	
Jahr	2003	2013	2006	2006	2002	2013	2013	2007	2006	2002	2012	2013	
Minimum	251.34	251.11	251.09 -	251.33	251.64	252.09	252.18 +	252.13	251.30	251.24	251.39	251.34	
Jahr	2012	2012	2011	2011	2011	2007	2011	2011	2005	2005	2005	2005	
Amplitude	2.26	1.72	3.01	4.13	1.64	1.15 -	1.18	9.34 +	2.25	2.03	2.05	1.73	
Jahr	2010	2013	2006	2006	2010	2013	2002	2007	2006	2002	2012	2010	
Periode	Mittel	252.60 m ü.M.		Maximum	261.90 (10.Aug 2007)		Minimum	251.09 (11.Mrz 2011)		Amplitude	10.81 m		

Darstellung der letzten 12 Jahre

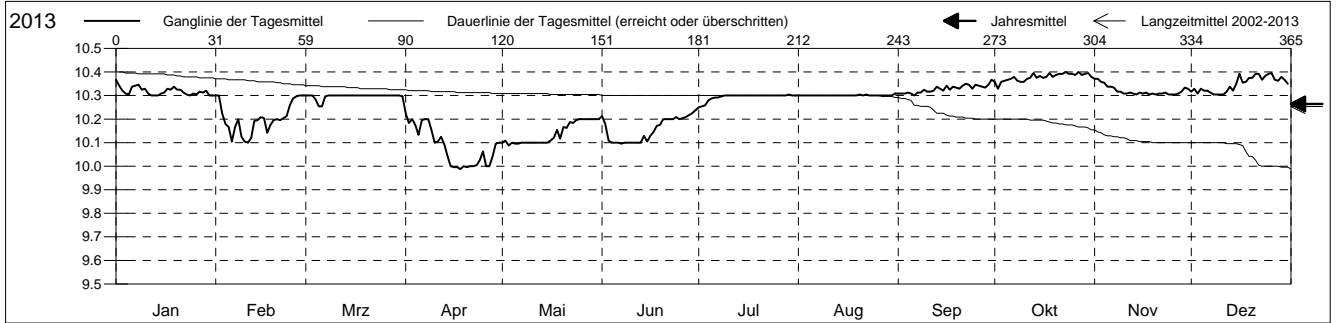


Grundwassertemperatur

Birstal
 Muttentz 21.J.01 Asprain
 Abstichpunkt: 0.00 m ü.M.
 OK Terrain: 0.00 m ü.M.

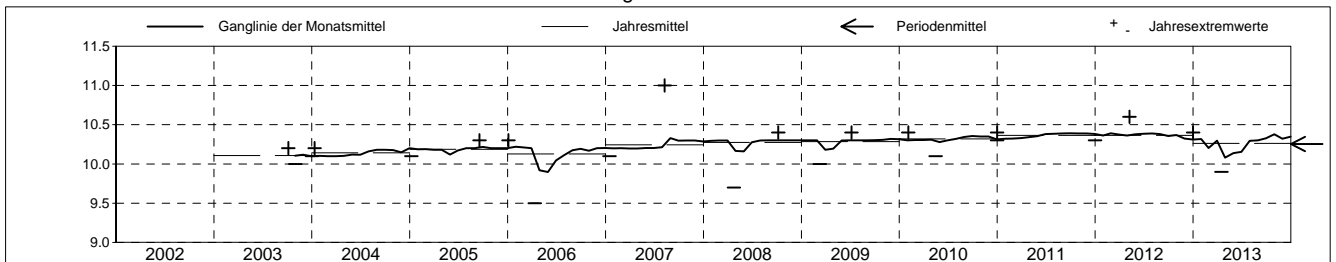
Amt für Umweltschutz und Energie
Kanton Basel-Landschaft
 Koordinaten: 0.00 / 0.00

2013	Januar	Februar	März	April	Mai	Juni	Juli	August	September	Oktober	November	Dezember	
1	10.4 +	10.3 +	10.3 +	10.2 +	10.1 -	10.2 +	10.3 +	10.3 +	10.3 -	10.4 +	10.4 +	10.3 -	1
2	10.3 -	10.3 +	10.3 +	10.2 +	10.1 -	10.2 +	10.3 +	10.3 +	10.3 -	10.3 -	10.4 +	10.3 -	2
3	10.3 -	10.2	10.3 +	10.2 +	10.1 -	10.1 -	10.3 +	10.3 +	10.3 -	10.4 +	10.4 +	10.3 -	3
4	10.3 -	10.2	10.3 +	10.2 +	10.1 -	10.1 -	10.3 +	10.3 +	10.3 -	10.4 +	10.4 +	10.3 -	4
5	10.3 -	10.2	10.3 +	10.1	10.1 -	10.1 -	10.3 +	10.3 +	10.3 -	10.4 +	10.3 -	10.3 -	5
Tagesmittel													
6	10.3 -	10.1 -	10.3 +	10.2 +	10.1 -	10.1 -	10.3 +	10.3 +	10.3 -	10.4 +	10.3 -	10.3 -	6
7	10.3 -	10.2	10.3 +	10.2 +	10.1 -	10.1 -	10.3 +	10.3 +	10.3 -	10.4 +	10.3 -	10.3 -	7
8	10.3 -	10.2	10.3 +	10.2 +	10.1 -	10.1 -	10.3 +	10.3 +	10.3 -	10.4 +	10.3 -	10.3 -	8
9	10.3 -	10.1 -	10.3 +	10.2 +	10.1 -	10.1 -	10.3 +	10.3 +	10.3 -	10.4 +	10.3 -	10.3 -	9
10	10.3 -	10.1 -	10.3 +	10.1	10.1 -	10.1 -	10.3 +	10.3 +	10.3 -	10.4 +	10.3 -	10.3 -	10
11	10.3 -	10.1 -	10.3 +	10.1	10.1 -	10.1 -	10.3 +	10.3 +	10.3 -	10.4 +	10.3 -	10.3 -	11
12	10.3 -	10.1 -	10.3 +	10.1	10.1 -	10.1 -	10.3 +	10.3 +	10.3 -	10.4 +	10.3 -	10.3 -	12
13	10.3 -	10.2	10.3 +	10.1	10.1 -	10.1 -	10.3 +	10.3 +	10.3 -	10.4 +	10.3 -	10.3 -	13
14	10.3 -	10.2	10.3 +	10.0 -	10.1 -	10.1 -	10.3 +	10.3 +	10.3 -	10.4 +	10.3 -	10.3 -	14
15	10.3 -	10.2	10.3 +	10.0 -	10.1 -	10.1 -	10.3 +	10.3 +	10.3 -	10.4 +	10.3 -	10.4 +	15
Max. +													
16	10.3 -	10.2	10.3 +	10.0 -	10.1 -	10.1 -	10.3 +	10.3 +	10.3 -	10.4 +	10.3 -	10.4 +	16
17	10.3 -	10.1 -	10.3 +	10.0 -	10.1 -	10.1 -	10.3 +	10.3 +	10.3 -	10.4 +	10.3 -	10.4 +	17
18	10.3 -	10.2	10.3 +	10.0 -	10.2 +	10.2 +	10.3 +	10.3 +	10.3 -	10.4 +	10.3 -	10.4 +	18
19	10.3 -	10.2	10.3 +	10.0 -	10.1 -	10.2 +	10.3 +	10.3 +	10.3 -	10.4 +	10.3 -	10.4 +	19
20	10.3 -	10.2	10.3 +	10.0 -	10.2 +	10.2 +	10.3 +	10.3 +	10.3 -	10.4 +	10.3 -	10.4 +	20
Min. -													
21	10.3 -	10.2	10.3 +	10.0 -	10.2 +	10.2 +	10.3 +	10.3 +	10.3 -	10.4 +	10.3 -	10.4 +	21
22	10.3 -	10.2	10.3 +	10.0 -	10.2 +	10.2 +	10.3 +	10.3 +	10.4 +	10.4 +	10.3 -	10.4 +	22
23	10.3 -	10.2	10.3 +	10.0 -	10.2 +	10.2 +	10.3 +	10.3 +	10.3 -	10.4 +	10.3 -	10.4 +	23
24	10.3 -	10.3 +	10.3 +	10.0 -	10.2 +	10.2 +	10.3 +	10.3 +	10.3 -	10.4 +	10.3 -	10.4 +	24
25	10.3 -	10.3 +	10.3 +	10.1	10.2 +	10.2 +	10.3 +	10.3 +	10.3 -	10.4 +	10.3 -	10.4 +	25
26	10.3 -	10.3 +	10.3 +	10.0 -	10.2 +	10.2 +	10.3 +	10.3 +	10.3 -	10.4 +	10.3 -	10.4 +	26
27	10.3 -	10.3 +	10.3 +	10.0 -	10.2 +	10.2 +	10.3 +	10.3 +	10.3 -	10.4 +	10.3 -	10.4 +	27
28	10.3 -	10.3 +	10.3 +	10.0 -	10.2 +	10.2 +	10.3 +	10.3 +	10.3 -	10.4 +	10.3 -	10.4 +	28
29	10.3 -		10.3 +	10.1	10.2 +	10.2 +	10.3 +	10.3 +	10.3 -	10.4 +	10.3 -	10.4 +	29
30	10.3 -		10.3 +	10.1	10.2 +	10.2 +	10.3 +	10.3 +	10.4 +	10.4 +	10.3 -	10.4 +	30
31	10.3 -		10.3 +		10.2 +		10.3 +	10.3 +		10.4 +		10.4 +	31
Monatsmittel	10.3	10.2	10.3	10.1 -	10.1 -	10.2	10.3	10.3	10.3	10.4 +	10.3	10.3	
Maximum	10.4 +	10.3	10.3	10.3	10.2 -	10.3	10.4 +	10.4 +	10.4 +	10.4 +	10.4 +	10.4 +	
Datum	01.01	01.02	01.03	01.04	02.05	01.06	29.07	20.08	01.09	01.10	01.11	01.12	
Minimum	10.3 +	10.0	10.2	9.9 -	10.0	10.0	10.2	10.3 +	10.3 +	10.3 +	10.3 +	10.3 +	
Datum	01.01	10.02	04.03	16.04	02.05	07.06	01.07	01.08	01.09	01.10	01.11	01.12	
Amplitude	0.1	0.3	0.1	0.4	0.2	0.3	0.2	0.1	0.1	0.1	0.1	0.1	
Jahr 2013	Mittel	10.3 °C		Maximum	10.4 (01.Jan)		Minimum	9.9 (16.Apr)		Amplitude		0.5 °C	



Periode	2002 - 2013												
Monatsmittel	10.3 +	10.3 +	10.2 -	10.2 -	10.2 -	10.2 -	10.3 +	10.3 +	10.3 +	10.3 +	10.3 +	10.3 +	10.3 +
Maximum	10.4 -	10.4 -	10.4 -	10.4 -	10.6	10.4 -	10.4 -	11.0 +	10.4 -	10.4 -	10.4 -	10.4 -	10.4 -
Jahr	2011	2010	2010	2010	2012	2010	2009	2007	2009	2008	2009	2009	2009
Minimum	10.1 +	10.0	10.0	9.5 -	9.7	10.0	10.1 +	10.1 +	10.1 +	10.0	10.1 +	10.1 +	10.1 +
Jahr	2004	2013	2009	2006	2006	2006	2004	2004	2003	2003	2003	2003	2003
Amplitude	0.2	0.3	0.3	0.7	0.3	0.3	0.2	0.8 +	0.2	0.2	0.1 -	0.2	0.2
Jahr	2007	2013	2009	2006	2006	2013	2013	2007	2006	2003	2007	2006	2006
Periode	Mittel	10.3 °C		Maximum	11.0 (09.Aug 2007)		Minimum	9.5 (11.Apr 2006)		Amplitude		1.5 °C	

Darstellung der letzten 12 Jahre

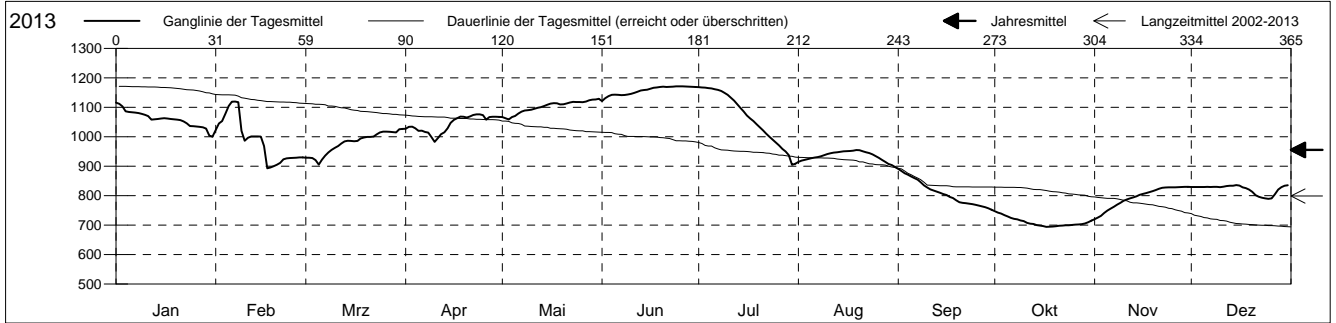


Leitfähigkeit

Birstal
 Muttenz 21.J.01 Asprain
 Abstichpunkt: 0.00 m ü.M.
 OK Terrain: 0.00 m ü.M.

Amt für Umweltschutz und Energie
Kanton Basel-Landschaft
 Koordinaten: 0.00 / 0.00

2013	Januar	Februar	März	April	Mai	Juni	Juli	August	September	Oktober	November	Dezember	
1	1116 +	1023	929	1027	1067	1121 -	1168 +	915	891 +	747 +	720 -	829	1
2	1112	1045	928	1034	1063	1131	1168 +	919	883	742	726	829	2
3	1103	1053	928	1034	1059 -	1138	1167	922	876	739	732	829	3
4	1086	1079	921	1029	1067	1142	1165	924	871	734	741	829	4
5	1084	1105	905 -	1020	1071	1143	1164	927	865	729	750	829	5
6	1083	1119	922	1020	1079	1142	1162	929	860	724	756	830	6
7	1082	1120 +	936	1016	1085	1141	1160	931	854	721	763	829	7
8	1080	1117	947	1014	1089	1142	1155	934	846	719	769	830	8
9	1078	1020	955	999	1090	1144	1149	937	835	716	775	830	9
10	1074	986	962	983 -	1092	1146	1142	941	828	713	783	829	10
11	1070	997	968	995	1095	1149	1133	944	821	707	787	830	11
12	1058	1001	977	1009	1098	1153	1123	946	817	705	791	833	12
13	1059	1001	984	1015	1100	1157	1110	948	813	704	794	834	13
14	1060	1001	987	1029	1105	1159	1098	949	810	700	798	834	14
15	1062	1001	986	1047	1109	1160	1086	951	806	698	802	836 +	15
16	1063	968	985	1058	1112	1163	1072	951	802	697	806	834	16
17	1062	893 -	986	1063	1114	1166	1062	952	796	694 -	809	828	17
18	1061	896	994	1068	1113	1167	1053	953	792	694 -	812	826	18
19	1059	900	997	1068	1110	1169	1042	955 +	784	695	815	820	19
20	1058	905	999	1065	1110	1170	1032	954	778	696	819	813	20
21	1056	911	999	1069	1113	1169	1022	951	775	698	823	801	21
22	1052	923	1000	1074	1117	1170	1011	948	775	698	826	796	22
23	1046	926	1008	1076 +	1118	1170	1000	945	773	699	828	793	23
24	1037	928	1014	1076 +	1118	1171 +	990	940	771	699	828	791	24
25	1036	928	1018	1073	1118	1171 +	980	934	769	700	828	789 -	25
26	1035	928	1017	1058	1118	1171 +	970	928	766	702	828	791	26
27	1034	930	1017	1067	1120	1171 +	959	921	764	702	829	804	27
28	1032	930	1016	1068	1124	1170	950	915	761	703	829	821	28
29	1028	930	1015	1068	1126	1170	937	908	757	706	830 +	829	29
30	1004	1025	1025	1068	1126	1169	905 -	904	752 -	710	830 +	834	30
31	1001 -		1027 +		1129 +		908	897 -		715		835	31
Monatsmittel	1060	987	979	1043	1102	1157 +	1066	935	810	710 -	794	821	
Maximum	1117	1123	1029	1077	1130	1171 +	1169	957	900	752 -	832	839	
Datum	01.01	06.02	30.03	23.04	31.05	23.06	01.07	19.08	01.09	01.10	30.11	16.12	
Minimum	983	882	896	978	1053	1117 +	895	891	747	691 -	718	783	
Datum	30.01	17.02	04.03	09.04	02.05	01.06	30.07	31.08	30.09	16.10	01.11	26.12	
Amplitude	134	241	133	99	77	54	274	66	153	61	114	56	
Jahr 2013	Mittel	955 µs/cm		Maximum	1171 (23.Jun)		Minimum	691 (16.Okt)		Amplitude	480 µs/cm		



Periode	2002 - 2013												
Monatsmittel	812	831	880	926 +	907	847	777	726	719	703 -	720	761	
Maximum	1117	1123	1068	1116	1141	1171 +	1169	1072	1041	1043	906 -	1122	
Jahr	2013	2013	2007	2005	2005	2013	2013	2007	2007	2006	2012	2012	
Minimum	680	703	716	720 +	672	619	618	587 -	587 -	597	601	609	
Jahr	2006	2006	2008	2012	2011	2011	2011	2010	2011	2008	2009	2011	
Amplitude	158	241	247	322	313	239	274	356 +	170	208	131 -	244	
Jahr	2004	2013	2006	2008	2010	2005	2013	2007	2006	2007	2006	2012	
Periode	Mittel	799 µs/cm		Maximum	1171 (23.Jun 2013)		Minimum	587 (15.Aug 2010)		Amplitude	584 µs/cm		

Darstellung der letzten 12 Jahre

