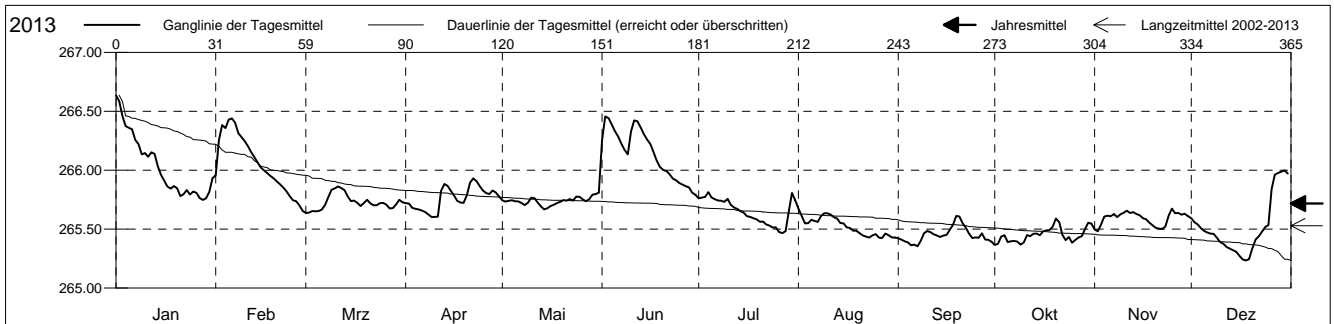


Grundwasserstände

Birstal
 Münchenstein 20.K.4 Hofmatt
 Abstichpunkt: 0.00 m ü.M.
 OK Terrain: 0.00 m ü.M.

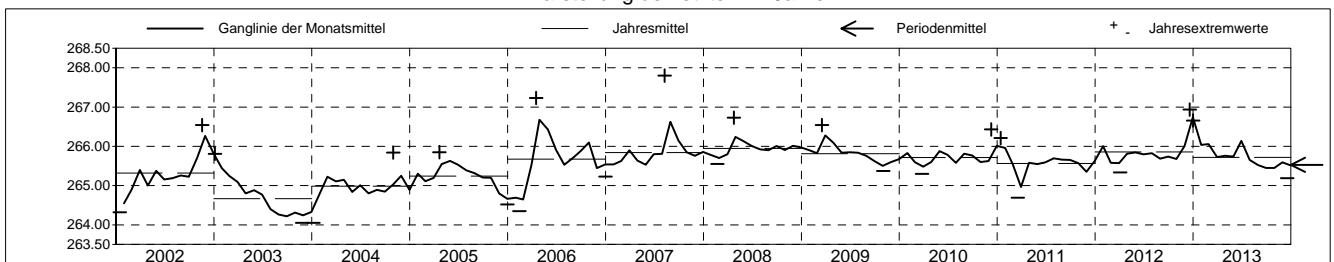
Amt für Umweltschutz und Energie
Kanton Basel-Landschaft
 Koordinaten: 0.00 / 0.00

2013	Januar	Februar	März	April	Mai	Juni	Juli	August	September	Oktober	November	Dezember	
1	266.64 +	265.96	265.64 -	265.72	265.74	266.25	265.76	265.68 +	265.42	265.37 -	265.50	265.59	1
2	266.59	266.26	265.64 -	265.72	265.73	266.46 +	265.77	265.61	265.41	265.37 -	265.48 -	265.56	2
3	266.46	266.38	265.65	265.68	265.74	266.44	265.77	265.55	265.40	265.44	265.54	265.54	3
4	266.38	266.36	265.65	265.67	265.74	266.39	265.81 +	265.55	265.39	265.45	265.61	265.51	4
5	266.36	266.43	265.65	265.67	265.74	266.33	265.77	265.58	265.36	265.39	265.61	265.49	5
Tagesmittel													
6	266.35	266.44 +	265.67	265.66	265.73	266.29	265.75	265.57	265.37	265.40	265.61	265.47	6
7	266.26	266.40	265.71	265.64	265.72	266.22	265.74	265.56	265.35 -	265.40	265.63	265.46	7
8	266.22	266.32	265.77	265.63	265.70	266.17	265.74	265.61	265.40	265.39	265.60	265.46	8
9	266.13	266.28	265.83	265.60 -	265.72	266.13	265.73	265.63	265.46	265.37 -	265.62	265.43	9
10	266.15	266.25	265.85	265.60 -	265.77	266.33	265.76	265.63	265.48	265.39	265.64	265.39	10
11	266.11	266.20	265.86 +	265.61	265.76	266.42	265.70	265.62	265.47	265.45	265.66	265.38	11
12	266.15	266.15	265.85	265.82	265.73	266.42	265.68	265.60	265.46	265.44	265.64	265.35	12
13	266.14	266.11	265.83	265.88	265.69	266.36	265.67	265.59	265.45	265.46	265.64	265.33	13
14	266.03	266.06	265.78	265.87	265.67 -	266.30	265.65	265.55	265.43	265.46	265.63	265.32	14
15	265.96	266.02	265.74	265.83	265.68	266.26	265.64	265.55	265.44	265.45	265.62	265.31	15
Max. +													
16	265.91	266.00	265.74	265.78	265.70	266.22	265.61	265.52	265.45	265.48	265.59	265.27	16
17	265.86	265.98	265.72	265.74	265.71	266.15	265.60	265.51	265.49	265.49	265.58	265.24	17
18	265.84	265.95	265.70	265.73	265.72	266.08	265.59	265.49	265.54	265.49	265.55	265.23 -	18
19	265.87	265.93	265.72	265.72	265.73	266.03	265.58	265.49	265.61 +	265.52	265.53	265.24	19
20	265.85	265.90	265.75	265.79	265.75	266.00	265.56	265.47	265.61 +	265.59 +	265.51	265.34	20
Min. -													
21	265.78	265.88	265.72	265.89	265.74	265.99	265.56	265.45	265.55	265.56	265.50	265.41	21
22	265.80	265.85	265.70	265.93 +	265.76	265.97	265.54	265.44	265.51	265.45	265.50	265.44	22
23	265.83	265.82	265.70	265.91	265.74	265.93	265.53	265.43	265.46	265.41	265.52	265.48	23
24	265.79	265.78	265.72	265.86	265.78	265.91	265.51	265.45	265.42	265.43	265.62	265.52	24
25	265.82	265.74	265.72	265.83	265.77	265.89	265.51	265.46	265.43	265.38	265.67 +	265.53	25
26	265.81	265.74	265.71	265.81	265.75	265.88	265.48	265.43	265.43	265.41	265.63	265.84	26
27	265.76	265.70	265.67	265.80	265.74	265.86	265.47 -	265.42 -	265.46	265.43	265.64	265.96	27
28	265.75 -	265.65 -	265.68	265.83	265.75	265.85	265.48	265.46	265.41	265.44	265.62	265.98	28
29	265.76		265.71	265.81	265.79	265.81	265.65	265.45	265.41	265.50	265.63	265.99	29
30	265.82		265.75	265.78	265.80	265.79 -	265.81 +	265.43	265.39	265.55	265.61	266.00 +	30
31	265.93		265.73		265.81 +		265.74	265.43	265.55	265.55		265.97	31
Monatsmittel	266.04	266.06	265.73	265.76	265.74	266.14 +	265.65	265.52	265.45 -	265.45 -	265.59	265.52	
Maximum	266.66 +	266.49	265.93	266.02	265.96	266.52	265.88	265.74	265.67	265.62 -	265.73	266.05	
Datum	01.01	06.02	11.03	22.04	31.05	02.06	04.07	01.08	20.09	31.10	25.11	29.12	
Amplitude	0.96	0.94	0.42	0.54	0.42	0.82	0.51	0.34	0.34	0.29	0.30	0.87	
Jahr 2013	Mittel	265.72 m ü.M.		Maximum	266.66 (01.Jan)		Minimum	265.19 (18.Dez)		Amplitude	1.47 m		



Periode	2002 - 2013												
Monatsmittel	265.48	265.42 -	265.50	265.66 +	265.64	265.61	265.47	265.53	265.48	265.49	265.50	265.55	
Maximum	266.66	266.49	266.54	267.23	266.73	266.52	266.15 -	267.80 +	266.71	266.57	266.76	266.94	
Jahr	2013	2013	2009	2006	2006	2013	2008	2007	2007	2006	2012	2012	
Minimum	264.05 -	264.35	264.69	264.68	264.72 +	264.45	264.23	264.15	264.06	264.08	264.05 -	264.17	
Jahr	2004	2006	2011	2003	2003	2003	2003	2003	2003	2003	2003	2003	
Amplitude	1.33	0.94	1.31	1.28	0.95	0.82	0.72 -	2.18 +	0.93	1.22	1.17	0.99	
Jahr	2004	2013	2006	2006	2002	2013	2002	2007	2002	2004	2012	2010	
Periode	Mittel	265.53 m ü.M.		Maximum	267.80 (09.Aug 2007)		Minimum	264.05 (26.Nov 2003)		Amplitude	3.75 m		

Darstellung der letzten 12 Jahre

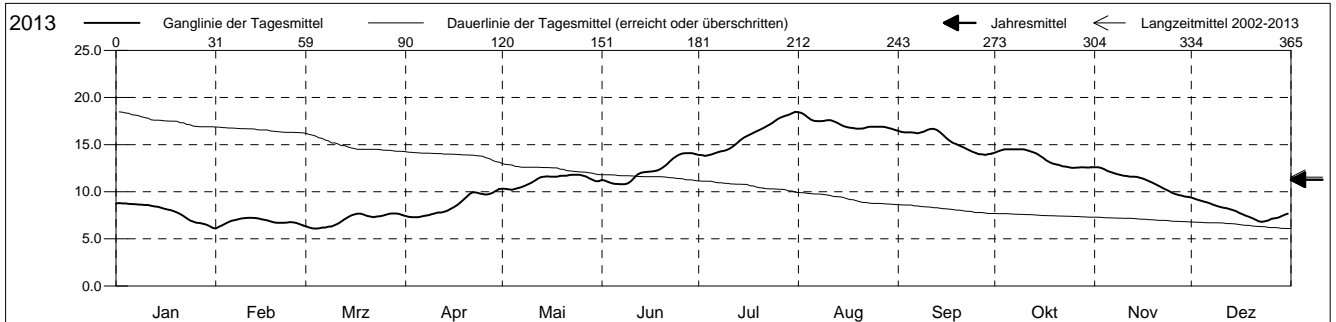


Grundwassertemperatur

Birstal
 Münchenstein 20.K.4 Hofmatt
 Abstichpunkt: 0.00 m ü.M.
 OK Terrain: 0.00 m ü.M.

Amt für Umweltschutz und Energie
Kanton Basel-Landschaft
 Koordinaten: 0.00 / 0.00

2013	Januar	Februar	März	April	Mai	Juni	Juli	August	September	Oktober	November	Dezember	
1	8.8 +	6.1 -	6.3	7.4	10.3	11.3	13.9	18.4 +	16.5	14.1	12.6 +	9.4 +	1
2	8.8 +	6.3	6.2	7.3 -	10.3	11.2	13.9	18.4 +	16.4	14.3	12.6 +	9.3	2
3	8.8 +	6.4	6.1 -	7.3 -	10.3	11.0	13.8 -	18.1	16.3	14.4	12.5	9.1	3
4	8.8 +	6.6	6.1 -	7.3 -	10.2 -	10.9	13.9	17.9	16.3	14.5 +	12.4	9.0	4
5	8.7	6.8	6.1 -	7.3 -	10.3	10.8 -	14.0	17.6	16.3	14.5 +	12.2	8.9	5
Tagesmittel	8.7	6.9	6.2	7.4	10.4	10.8 -	14.1	17.5	16.3	14.5 +	12.1	8.9	6
6	8.7	7.0	6.2	7.5	10.5	10.8 -	14.2	17.5	16.2	14.5 +	12.0	8.8	7
7	8.6	7.1	6.3	7.5	10.6	10.8 -	14.3	17.5	16.3	14.5 +	11.9	8.6	8
8	8.6	7.2 +	6.3	7.6	10.8	10.9	14.4	17.5	16.4	14.5 +	11.8	8.5	9
9	8.6	7.2 +	6.5	7.7	11.0	11.1	14.5	17.6	16.5	14.5 +	11.7	8.4	10
10	8.6	7.2 +	6.6	7.8	11.2	11.5	14.7	17.6	16.7 +	14.4	11.7	8.3	11
11	8.5	7.2 +	6.8	7.8	11.4	11.8	14.9	17.5	16.7 +	14.3	11.6	8.3	12
12	8.4	7.2 +	7.1	7.9	11.6	12.0	15.2	17.3	16.5	14.2	11.6	8.1	13
13	8.4	7.2 +	7.3	8.0	11.6	12.1	15.5	17.1	16.3	14.0	11.6	8.0	14
14	8.3	7.1	7.5	8.2	11.6	12.1	15.7	17.0	16.0	13.8	11.5	7.9	15
Max. +	8.2	7.0	7.6	8.4	11.6	12.1	15.9	16.9	15.7	13.6	11.4	7.8	16
16	8.1	7.0	7.7 +	8.6	11.6	12.2	16.1	16.8	15.4	13.3	11.3	7.6	17
17	8.1	6.9	7.7 +	8.9	11.6	12.3	16.3	16.8	15.2	13.1	11.1	7.5	18
18	7.9	6.8	7.6	9.2	11.7	12.4	16.4	16.7	15.1	13.0	11.0	7.3	19
19	7.8	6.7	7.4	9.5	11.7	12.6	16.6	16.7	14.9	12.9	10.8	7.2	20
Min. -	7.6	6.7	7.4	9.8	11.7	12.9	16.8	16.7	14.8	12.8	10.6	7.0	21
21	7.4	6.7	7.3	10.0	11.8 +	13.2	16.9	16.8	14.6	12.7	10.4	6.9	22
22	7.2	6.7	7.4	9.9	11.8 +	13.5	17.1	16.9	14.4	12.7	10.3	6.8	23
23	7.0	6.8	7.4	9.8	11.8 +	13.8	17.3	16.9	14.3	12.6	10.1	6.9	24
24	6.8	6.7	7.5	9.7	11.8 +	13.9	17.6	16.9	14.1	12.5 -	9.9	7.0	25
25	6.7	6.7	7.6	9.7	11.7	14.1 +	17.8	16.9	14.0	12.5 -	9.8	7.1	26
26	6.7	6.6	7.7 +	9.8	11.6	14.1 +	18.0	16.9	14.0	12.6	9.7	7.2	27
27	6.6	6.4	7.7 +	9.9	11.4	14.1 +	18.1	16.9	13.9 -	12.6	9.6	7.3	28
28	6.5	6.4	7.7 +	10.1	11.3	14.1 +	18.2	16.8	14.0	12.6	9.5 -	7.4	29
29	6.4	6.4	7.6	10.3 +	11.1	14.0	18.3	16.7	14.0	12.6	9.5 -	7.6	30
30	6.2 -	7.5	7.5	11.1	11.1	14.0	18.5 +	16.6 -	12.6	12.6	9.5 -	7.7	31
31	6.2 -	7.5	7.5	11.1	11.1	14.0	18.5 +	16.6 -	12.6	12.6	9.5 -	7.7	31
Monatsmittel	7.9	6.8 -	7.0	8.6	11.2	12.3	15.9	17.2 +	15.5	13.5	11.1	7.9	
Maximum	8.9	7.3 -	7.7	10.3	11.8	14.1	18.5 +	18.5 +	16.7	14.5	12.6	9.4	
Datum	03.01	10.02	17.03	30.04	22.05	26.06	31.07	01.08	11.09	03.10	01.11	01.12	
Minimum	6.1 -	6.1 -	6.1 -	7.3	10.2	10.7	13.8	16.5 +	13.9	12.5	9.4	6.8	
Datum	31.01	01.02	03.03	02.04	03.05	07.06	02.07	31.08	27.09	25.10	30.11	22.12	
Amplitude	2.8	1.2	1.6	3.0	1.6	3.4	4.7	2.0	2.8	2.0	3.2	2.6	
Jahr 2013	Mittel	11.3 °C	Maximum	18.5 (31.Jul)	Minimum	6.1 (31.Jan)	Amplitude	12.4 °C					



Periode	2002 - 2013												
Monatsmittel	7.1	6.3 -	7.5	9.7	12.7	14.6	16.4	16.7 +	15.4	13.2	10.3	8.2	
Maximum	9.2	8.3 -	9.4	13.4	16.8	17.1	18.7	19.3 +	19.1	16.0	12.9	10.4	
Jahr	2007	2007	2012	2007	2011	2009	2010	2011	2011	2009	2006	2006	
Minimum	4.0	3.9 -	5.7	7.3	9.5	10.7	13.7 +	13.1	12.8	10.1	7.1	5.4	
Jahr	2009	2012	2012	2008	2008	2013	2007	2007	2008	2010	2007	2007	
Amplitude	2.8 -	3.8	3.7	4.9 +	4.5	3.4	4.9 +	4.0	4.2	4.8	3.2	3.0	
Jahr	2013	2012	2012	2007	2009	2013	2010	2011	2011	2009	2013	2007	
Periode	Mittel	11.6 °C	Maximum	19.3 (30.Aug 2011)	Minimum	3.9 (18.Feb 2012)	Amplitude	15.4 °C					

Darstellung der letzten 12 Jahre

