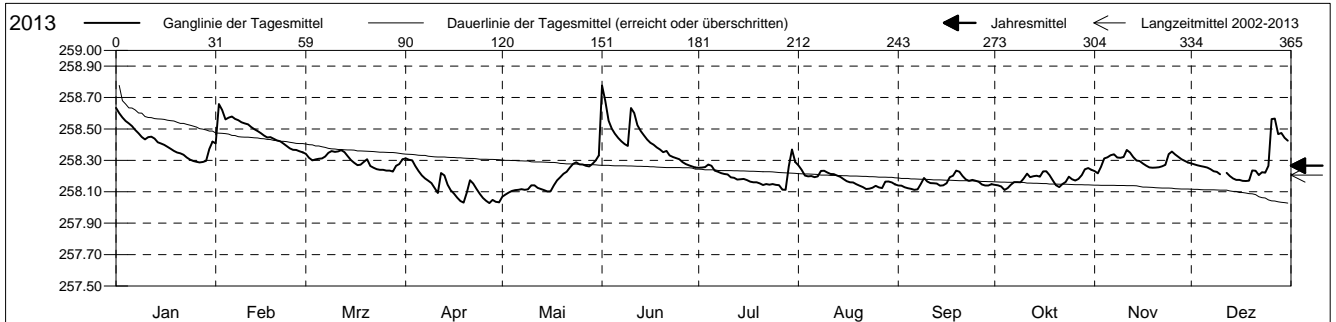


Grundwasserstände

Birstal
 Münchenstein 20.J.90 Grün80
 Abstichpunkt: 0.00 m ü.M.
 OK Terrain: 0.00 m ü.M.

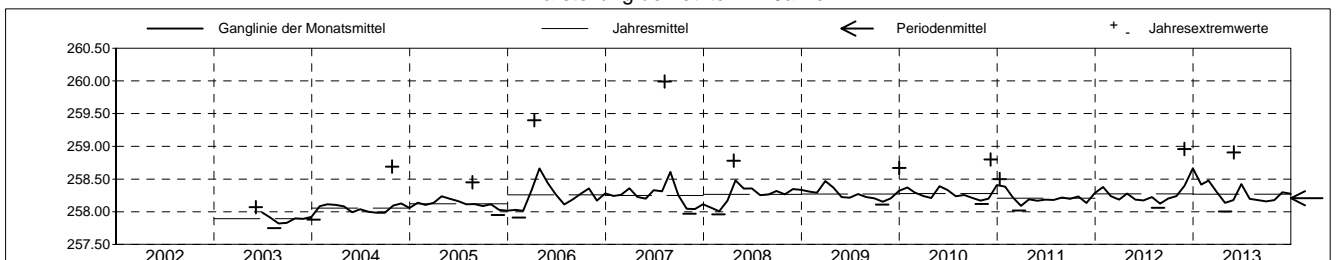
Amt für Umweltschutz und Energie
Kanton Basel-Landschaft
 Koordinaten: 0.00 / 0.00

2013	Januar	Februar	März	April	Mai	Juni	Juli	August	September	Oktober	November	Dezember	
1	258.63 +	258.41	258.34	258.31 +	258.07 -	258.78 +	258.25	258.27 +	258.14	258.14	258.23	258.28	1
2	258.60	258.66 +	258.32	258.30	258.08	258.68	258.25	258.24	258.14	258.14	258.22 -	258.27	2
3	258.57	258.62	258.30	258.30	258.09	258.55	258.26	258.20	258.13	258.13	258.26	258.27	3
4	258.55	258.56	258.31	258.26	258.11	258.50	258.27	258.20	258.12	258.11 -	258.31	258.26	4
5	258.54	258.57	258.31	258.23	258.11	258.47	258.27	258.20	258.12	258.12	258.32	258.26	5
6	258.52	258.58	258.31	258.20	258.11	258.44	258.23	258.19	258.11 -	258.14	258.33	258.25	6
7	258.49	258.56	258.32	258.19	258.12	258.42	258.23	258.20	258.11 -	258.16	258.34	258.24	7
8	258.47	258.56	258.35	258.17	258.11	258.40	258.22	258.23	258.15	258.16	258.32	258.23	8
9	258.45	258.54	258.36 +	258.16	258.12	258.39	258.21	258.23	258.19	258.16	258.32	258.23	9
10	258.43	258.54	258.35	258.12	258.14	258.63	258.21	258.22	258.17	258.18	258.32	258.21	10
11	258.45	258.53	258.36 +	258.09	258.14	258.60	258.19	258.21	258.16	258.22	258.37 +		11
12	258.45	258.51	258.36 +	258.22	258.12	258.52	258.19	258.21	258.15	258.19	258.35	258.22	12
13	258.44	258.50	258.35	258.20	258.12	258.49	258.18	258.20	258.15	258.20	258.32	258.20	13
14	258.42	258.49	258.33	258.14	258.11	258.46	258.18	258.20	258.14	258.20	258.30	258.19	14
15	258.41	258.47	258.30	258.11	258.10	258.43	258.18	258.18	258.14	258.20	258.30	258.18	15
16	258.40	258.46	258.28	258.09	258.10	258.41	258.17	258.17	258.15	258.23	258.28	258.18	16
17	258.39	258.45	258.27	258.06	258.14	258.40	258.16	258.16	258.19	258.23	258.27	258.17	17
18	258.37	258.45	258.27	258.04	258.17	258.38	258.16	258.16	258.20	258.21	258.26	258.17	18
19	258.36	258.44	258.29	258.03 -	258.19	258.37	258.16	258.15	258.24 +	258.17	258.25	258.17	19
20	258.35	258.43	258.31	258.10	258.21	258.35	258.15	258.14	258.23	258.14	258.25	258.24	20
21	258.34	258.42	258.26	258.17	258.23	258.36	258.14	258.13	258.20	258.13	258.26	258.23	21
22	258.34	258.41	258.25	258.15	258.25	258.33	258.15	258.12 -	258.18	258.15	258.26	258.21	22
23	258.32	258.39	258.24	258.12	258.28	258.32	258.14	258.12 -	258.17	258.16	258.27	258.22	23
24	258.30	258.38	258.24	258.09	258.29	258.31	258.15	258.13	258.18	258.20	258.34	258.22	24
25	258.30	258.37	258.24	258.06	258.27	258.31	258.14	258.14	258.17	258.18	258.36	258.26	25
26	258.29 -	258.37	258.23 -	258.04	258.27	258.29	258.14	258.13	258.16	258.17	258.34	258.56	26
27	258.29 -	258.36	258.23 -	258.03 -	258.27	258.28	258.11 -	258.12 -	258.15	258.18	258.32	258.57 +	27
28	258.29 -	258.35 -	258.23 -	258.05	258.26	258.27	258.11 -	258.16	258.14	258.21	258.31	258.47	28
29	258.30		258.27	258.04	258.28	258.26	258.26	258.17	258.14	258.24	258.30	258.47	29
30	258.37		258.28	258.03 -	258.30	258.25 -	258.37 +	258.16	258.15	258.25 +	258.29	258.44	30
31	258.42		258.31		258.33 +		258.29	258.15		258.24		258.43	31
Monatsmittel	258.41	258.48 +	258.30	258.14 -	258.18	258.42	258.20	258.18	258.16	258.18	258.30	258.28	
Maximum	258.66	258.77	258.39	258.34	258.54	258.91 +	258.46	258.30	258.27 -	258.29	258.40	258.67	
Datum	01.01	02.02	11.03	01.04	31.05	01.06	29.07	01.08	19.09	29.10	11.11	26.12	
Amplitude	0.39	0.44	0.20	0.34	0.50	0.67	0.36	0.19	0.18	0.20	0.20	0.52	
Jahr 2013	Mittel	258.27 m ü.M.		Maximum	258.91 (01.Jun)		Minimum	258.01 (30.Apr)		Amplitude		0.90 m	



Periode	2002 - 2013												
Monatsmittel	258.24	258.20	258.24	258.29 +	258.23	258.22	258.16 -	258.18	258.16 -	258.16 -	258.17	258.24	
Maximum	258.66	258.77	258.79	258.40	258.60	258.91	258.46 -	259.99 +	259.02	258.71	258.96	258.88	
Jahr	2013	2013	2006	2006	2006	2013	2013	2007	2006	2006	2012	2012	
Minimum	257.88	257.91	257.96	257.98 +	257.94	257.90	257.82	257.75 -	257.77	257.78	257.83	257.85	
Jahr	2004	2006	2008	2004	2004	2003	2003	2003	2003	2003	2003	2003	
Amplitude	0.44	0.44	0.75	1.00	0.50	0.67	0.36 -	1.77 +	0.92	0.75	0.73	0.65	
Jahr	2004	2013	2006	2006	2013	2013	2013	2007	2006	2004	2012	2010	
Periode	Mittel	258.21 m ü.M.		Maximum	259.99 (09.Aug 2007)		Minimum	257.75 (14.Aug 2003)		Amplitude		2.24 m	

Darstellung der letzten 12 Jahre

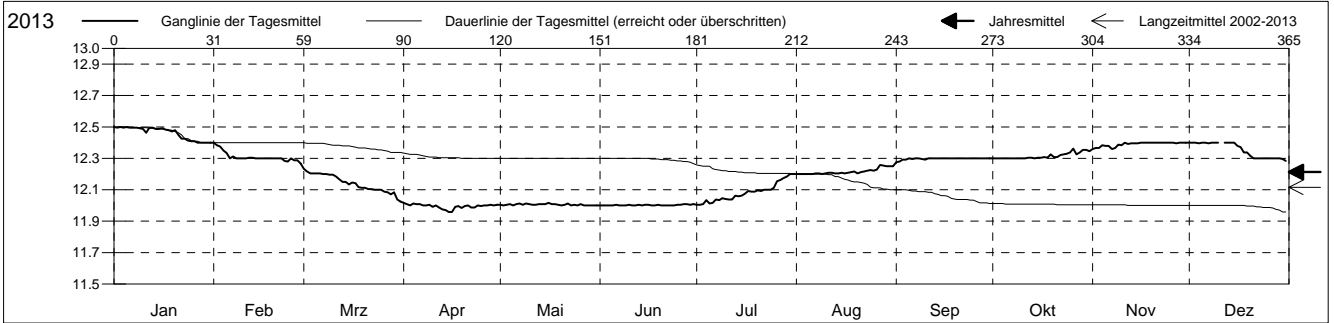


Grundwassertemperatur

Birstal
 Münchenstein 20.J.90 Grün80
 Abstichpunkt: 0.00 m ü.M.
 OK Terrain: 0.00 m ü.M.

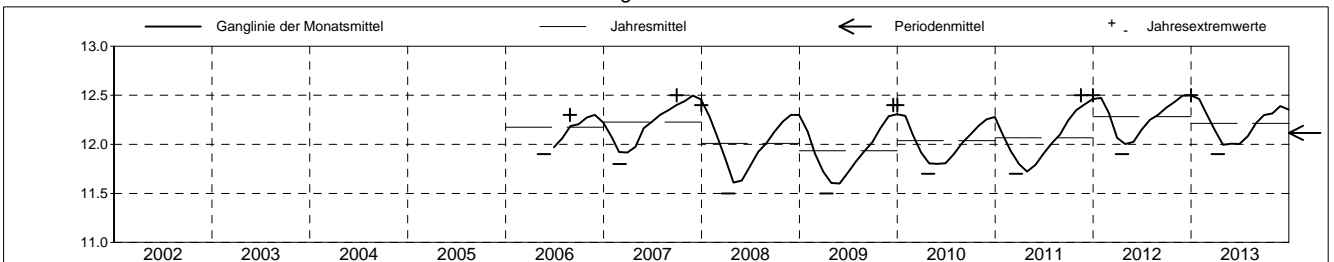
Amt für Umweltschutz und Energie
Kanton Basel-Landschaft
 Koordinaten: 0.00 / 0.00

2013	Januar	Februar	März	April	Mai	Juni	Juli	August	September	Oktober	November	Dezember	
1	12.5 +	12.4 +	12.2 +	12.0 +	12.0 +	12.0 +	12.0 -	12.2 -	12.3 +	12.3 -	12.4 +	12.4 +	1
2	12.5 +	12.4 +	12.2 +	12.0 +	12.0 +	12.0 +	12.0 -	12.2 -	12.3 +	12.3 -	12.4 +	12.4 +	2
3	12.5 +	12.4 +	12.2 +	12.0 +	12.0 +	12.0 +	12.0 -	12.2 -	12.3 +	12.3 -	12.4 +	12.4 +	3
4	12.5 +	12.4 +	12.2 +	12.0 +	12.0 +	12.0 +	12.0 -	12.2 -	12.3 +	12.3 -	12.4 +	12.4 +	4
5	12.5 +	12.3 -	12.2 +	12.0 +	12.0 +	12.0 +	12.0 -	12.2 -	12.3 +	12.3 -	12.4 +	12.4 +	5
Tagesmittel													
6	12.5 +	12.3 -	12.2 +	12.0 +	12.0 +	12.0 +	12.0 -	12.2 -	12.3 +	12.3 -	12.4 +	12.4 +	6
7	12.5 +	12.3 -	12.2 +	12.0 +	12.0 +	12.0 +	12.0 -	12.2 -	12.3 +	12.3 -	12.4 +	12.4 +	7
8	12.5 +	12.3 -	12.2 +	12.0 +	12.0 +	12.0 +	12.0 -	12.2 -	12.3 +	12.3 -	12.4 +	12.4 +	8
9	12.5 +	12.3 -	12.2 +	12.0 +	12.0 +	12.0 +	12.0 -	12.2 -	12.3 +	12.3 -	12.4 +	12.4 +	9
10	12.5 +	12.3 -	12.2 +	12.0 +	12.0 +	12.0 +	12.0 -	12.2 -	12.3 +	12.3 -	12.4 +	12.4 +	10
11	12.5 +	12.3 -	12.2 +	12.0 +	12.0 +	12.0 +	12.0 -	12.2 -	12.3 +	12.3 -	12.4 +		11
12	12.5 +	12.3 -	12.2 +	12.0 +	12.0 +	12.0 +	12.0 -	12.2 -	12.3 +	12.3 -	12.4 +	12.4 +	12
13	12.5 +	12.3 -	12.1	12.0 +	12.0 +	12.0 +	12.1	12.2 -	12.3 +	12.3 -	12.4 +	12.4 +	13
14	12.5 +	12.3 -	12.1	12.0 +	12.0 +	12.0 +	12.1	12.2 -	12.3 +	12.3 -	12.4 +	12.4 +	14
15	12.5 +	12.3 -	12.1	12.0 +	12.0 +	12.0 +	12.1	12.2 -	12.3 +	12.3 -	12.4 +	12.4 +	15
Max. +													
16	12.5 +	12.3 -	12.1	12.0 +	12.0 +	12.0 +	12.1	12.2 -	12.3 +	12.3 -	12.4 +	12.4 +	16
17	12.5 +	12.3 -	12.1	12.0 +	12.0 +	12.0 +	12.1	12.2 -	12.3 +	12.3 -	12.4 +	12.4 +	17
18	12.5 +	12.3 -	12.1	12.0 +	12.0 +	12.0 +	12.1	12.2 -	12.3 +	12.3 -	12.4 +	12.4 +	18
19	12.5 +	12.3 -	12.1	12.0 +	12.0 +	12.0 +	12.1	12.2 -	12.3 +	12.3 -	12.4 +	12.3	19
20	12.5 +	12.3 -	12.1	12.0 +	12.0 +	12.0 +	12.1	12.2 -	12.3 +	12.3 -	12.4 +	12.3	20
Min. -													
21	12.4 -	12.3 -	12.1	12.0 +	12.0 +	12.0 +	12.1	12.2 -	12.3 +	12.3 -	12.4 +	12.3	21
22	12.4 -	12.3 -	12.1	12.0 +	12.0 +	12.0 +	12.1	12.2 -	12.3 +	12.3 -	12.4 +	12.3	22
23	12.4 -	12.3 -	12.1	12.0 +	12.0 +	12.0 +	12.1	12.2 -	12.3 +	12.3 -	12.4 +	12.3	23
24	12.4 -	12.3 -	12.1	12.0 +	12.0 +	12.0 +	12.1	12.2 -	12.3 +	12.3 -	12.4 +	12.3	24
25	12.4 -	12.3 -	12.1	12.0 +	12.0 +	12.0 +	12.1	12.2 -	12.3 +	12.3 -	12.4 +	12.3	25
26	12.4 -	12.3 -	12.1	12.0 +	12.0 +	12.0 +	12.2 +	12.2 -	12.3 +	12.4 +	12.4 +	12.3	26
27	12.4 -	12.3 -	12.1	12.0 +	12.0 +	12.0 +	12.2 +	12.3 +	12.3 +	12.3 -	12.4 +	12.3	27
28	12.4 -	12.3 -	12.1	12.0 +	12.0 +	12.0 +	12.2 +	12.3 +	12.3 +	12.3 -	12.4 +	12.3	28
29	12.4 -		12.1	12.0 +	12.0 +	12.0 +	12.2 +	12.3 +	12.3 +	12.4 +	12.4 +	12.3	29
30	12.4 -		12.0 -	12.0 +	12.0 +	12.0 +	12.2 +	12.3 +	12.3 +	12.4 +	12.4 +	12.3	30
31	12.4 -		12.0 -		12.0 +		12.2 +	12.3 +		12.3 -		12.3	31
Monatsmittel	12.5 +	12.3	12.1	12.0 -	12.0 -	12.0 -	12.1	12.2	12.3	12.3	12.4	12.4	
Maximum	12.5 +	12.4	12.3	12.1 -	12.1 -	12.1 -	12.2	12.3	12.3	12.4	12.4	12.4	
Datum	01.01	01.02	01.03	01.04	01.05	06.06	21.07	07.08	01.09	12.10	01.11	01.12	
Minimum	12.4 +	12.2	12.0	11.9 -	12.0	12.0	12.0	11.9	12.2	12.3	12.3	12.2	
Datum	02.01	23.02	26.03	10.04	01.05	01.06	01.07	01.08	01.09	01.10	01.11	30.12	
Amplitude	0.1	0.2	0.3	0.2	0.1	0.1	0.2	0.1	0.1	0.1	0.1	0.2	
Jahr 2013	Mittel	12.2 °C		Maximum	12.5 (01.Jan)		Minimum	11.9 (10.Apr)		Amplitude	0.6 °C		



Periode	2002 - 2013												
Monatsmittel	12.3	12.1	11.9	11.8 -	11.9	11.9	12.0	12.1	12.2	12.3	12.4 +	12.4 +	
Maximum	12.5 +	12.5 +	12.3	12.1 -	12.3	12.3	12.3	12.4	12.5 +	12.5 +	12.5 +	12.5 +	
Jahr	2012	2012	2013	2007	2007	2007	2007	2007	2007	2007	2007	2007	
Minimum	11.9	11.8	11.6	11.5 -	11.5 -	11.6	11.7	11.8	11.9	12.1	12.2 +	12.1	
Jahr	2007	2009	2008	2008	2008	2008	2009	2009	2009	2009	2006	2006	
Amplitude	0.3	0.4 +	0.4 +	0.2 -	0.3	0.3	0.3	0.2 -	0.2 -	0.2 -	0.2 -	0.2 -	
Jahr	2007	2010	2008	2007	2007	2008	2006	2006	2009	2009	2008	2006	
Periode	Mittel	12.1 °C		Maximum	12.5 (30.Sep 2007)		Minimum	11.5 (09.Apr 2008)		Amplitude	1.0 °C		

Darstellung der letzten 12 Jahre

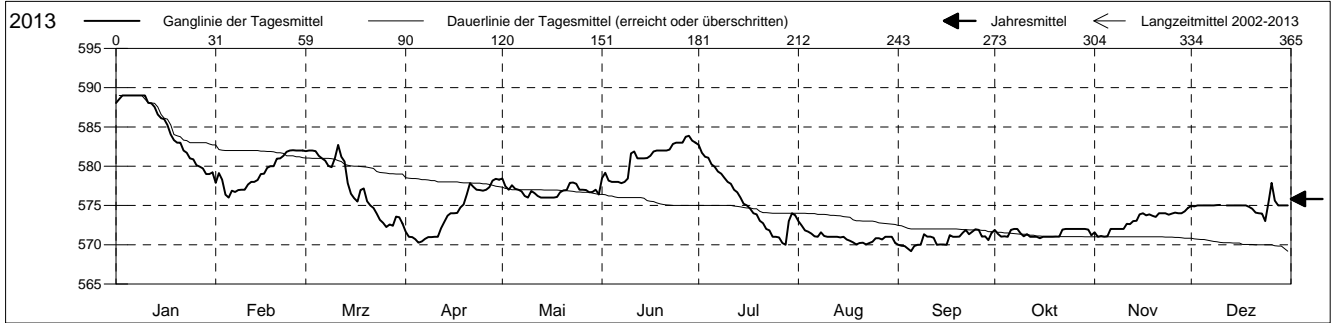


Leitfähigkeit

Birstal
 Münchenstein 20.J.90 Grün80
 Abstichpunkt: 0.00 m ü.M.
 OK Terrain: 0.00 m ü.M.

Amt für Umweltschutz und Energie
Kanton Basel-Landschaft
 Koordinaten: 0.00 / 0.00

2013	Januar	Februar	März	April	Mai	Juni	Juli	August	September	Oktober	November	Dezember	
1	588	578	582	572	578 +	578 -	583 +	573 +	570	572 +	572	575	1
2	589 +	579	582	571	577	579	582	572	570	571 -	571 -	575	2
3	589 +	578	582	571	577	578 -	581	572	570	571 -	571 -	575	3
4	589 +	576 -	582	571	578 +	578 -	581	572	570	571 -	571 -	575	4
5	589 +	576 -	581	570 -	577	578 -	580	571	569 -	571 -	571 -	575	5
Tagesmittel													
6	589 +	577	581	570 -	577	578 -	580	571	570	572 +	572	575	6
7	589 +	577	581	571	577	578 -	579	571	570	572 +	572	575	7
8	589 +	577	580	571	576 -	578 -	579	572	570	572 +	572	575	8
9	589 +	577	580	571	576 -	578 -	579	571	571	571 -	572	575	9
10	589 +	577	581	571	577	582	578	571	571	571 -	572	575	10
11	588	578	583 +	571	577	582	578	571	571	571 -	573		11
12	588	578	581	572	576 -	581	577	571	571	571 -	573	575	12
13	588	578	581	573	576 -	581	577	571	570	571 -	573	575	13
14	587	578	578	574	576 -	581	576	571	570	571 -	573	575	14
15	586	579	577	574	576 -	581	575	571	570	571 -	574	575	15
Max. +													
16	586	579	576	574	576 -	581	575	571	570	571 -	574	575	16
17	585	580	576	574	576 -	582	575	571	571	571 -	574	575	17
18	584	580	577	575	576 -	582	574	570 -	571	571 -	574	575	18
19	583	580	577	575	577	582	574	570 -	571	571 -	574	575	19
20	583	581	576	576	577	582	573	570 -	571	571 -	574	575	20
Min. -													
21	583	581	575	578 +	577	582	573	570 -	572 +	571 -	574	574	21
22	582	581	575	577	578 +	582	572	570 -	572 +	572 +	574	574	22
23	582	582 +	574	577	578 +	583	572	570 -	571	572 +	574	574	23
24	581	582 +	573	577	578 +	583	571	570 -	572 +	572 +	574	573	24
25	581	582 +	573	577	577	583	571	571	572 +	572 +	574	575	25
26	580	582 +	572 -	577	577	583	571	571	572 +	572 +	574	578 +	26
27	580	582 +	573	577	577	584 +	570 -	571	571	572 +	574	576	27
28	580	582 +	572 -	578 +	577	584 +	570 -	571	571	572 +	574	575	28
29	579 -		574	578 +	577	583	573	571	571	572 +	574	575	29
30	579 -		574	578 +	577	583	574	571	572 +	572 +	575 +	575	30
31	579 -		573		576 -		574	570 -		571 -		575	31
Monatsmittel	585 +	579	577	574	577	581	576	571 -	571 -	571 -	573	575	
Maximum	589 +	583	584	579	579	584	583	574	572 -	572 -	576	580	
Datum	01.01	25.02	11.03	28.04	01.05	27.06	01.07	01.08	09.09	01.10	26.11	25.12	
Minimum	578 +	576	572	570	575	575	570	570	561 -	567	568	573	
Datum	31.01	04.02	25.03	03.04	21.05	07.06	26.07	14.08	29.09	15.10	19.11	23.12	
Amplitude	11	7	12	9	4	9	13	4	11	5	8	7	
Jahr 2013	Mittel	576 µs/cm	Maximum	589 (01.Jan)	Minimum	561 (29.Sep)	Amplitude	28 µs/cm					



Periode	2002 - 2013											
Monatsmittel	561	560	558	553 -	553 -	555	556	558	557	557	558	562 +
Maximum	589	583	584	579	579	584	583	612 +	575 -	576	581	591
Jahr	2013	2013	2013	2013	2013	2013	2013	2007	2006	2006	2012	2012
Minimum	543 +	542	539	534	528	531	525 -	532	531	536	539	538
Jahr	2008	2008	2008	2009	2009	2009	2008	2008	2008	2008	2008	2008
Amplitude	13	11 -	13	19	11 -	12	14	61 +	15	15	14	19
Jahr	2009	2009	2011	2009	2010	2009	2008	2007	2007	2006	2012	2008
Periode	Mittel	557 µs/cm	Maximum	612 (10.Aug 2007)	Minimum	525 (20.Jul 2008)	Amplitude	87 µs/cm				

Darstellung der letzten 12 Jahre

