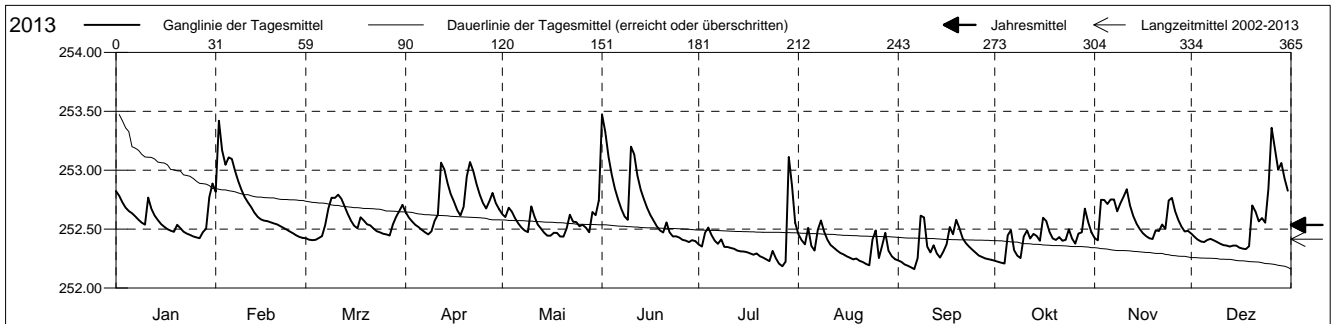


Grundwasserstände

Birstal
 Birsfelden 17.J.01 Hagnau
 Abstichpunkt: 0.00 m ü.M.
 OK Terrain: 0.00 m ü.M.

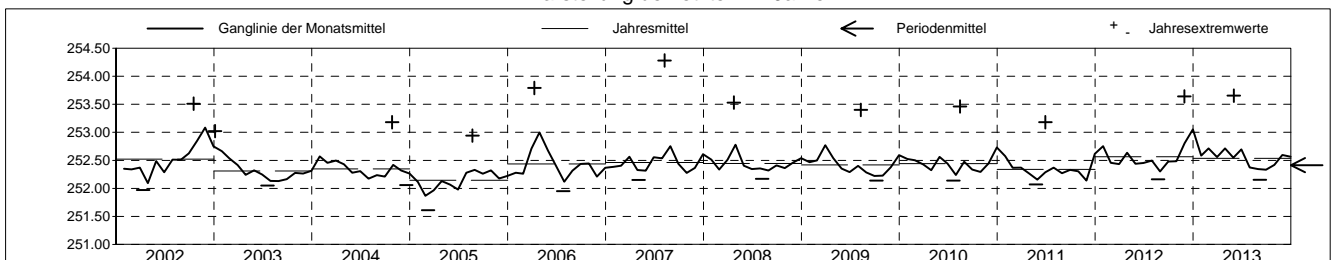
Amt für Umweltschutz und Energie
Kanton Basel-Landschaft
 Koordinaten: 0.00 / 0.00

2013	Januar	Februar	März	April	Mai	Juni	Juli	August	September	Oktober	November	Dezember	
1	252.82	252.82	252.42	252.64	252.63	253.47 +	252.37	252.46	252.23	252.23	252.42	252.46	1
2	252.78	253.42 +	252.41 -	252.60	252.60	253.33	252.35	252.41	252.22	252.22	252.41 -	252.44	2
3	252.73	253.17	252.41 -	252.56	252.68	253.11	252.47	252.37	252.20	252.21 -	252.75	252.41	3
4	252.68	253.05	252.41 -	252.54	252.65	252.96	252.51	252.51	252.19	252.21 -	252.75	252.39	4
5	252.65	253.11	252.42	252.52	252.59	252.85	252.45	252.36	252.17	252.45	252.71	252.39	5
Tagesmittel													
6	252.63	253.09	252.44	252.49	252.55	252.75	252.40	252.32	252.16 -	252.49	252.75	252.41	6
7	252.61	252.99	252.53	252.47	252.51	252.67	252.38	252.49	252.25	252.32	252.75	252.42	7
8	252.58	252.91	252.67	252.46 -	252.49	252.61	252.41	252.57 +	252.61 +	252.27	252.65	252.40	8
9	252.55	252.83	252.77	252.48	252.47	252.58	252.35	252.48	252.60	252.25	252.72	252.39	9
10	252.54	252.77	252.77	252.57	252.69	253.20	252.35	252.41	252.35	252.44	252.78	252.38	10
11	252.77	252.73	252.79 +	252.62	252.61	253.13	252.34	252.37	252.30	252.49	252.84 +	252.36	11
12	252.67	252.69	252.76	253.06	252.54	252.96	252.33	252.34	252.36	252.42	252.70	252.36	12
13	252.62	252.64	252.69	253.00	252.51	252.83	252.32	252.32	252.29	252.46	252.61	252.35	13
14	252.58	252.60	252.63	252.89	252.47	252.75	252.31	252.30	252.26	252.44	252.55	252.36	14
15	252.54	252.58	252.57	252.80	252.44 -	252.68	252.31	252.28	252.31	252.40	252.50	252.36	15
16	252.52	252.57	252.53	252.73	252.44 -	252.62	252.30	252.27	252.37	252.60	252.46	252.34	16
17	252.50	252.57	252.51	252.66	252.47	252.57	252.29	252.26	252.52	252.57	252.44	252.33 -	17
18	252.49	252.56	252.60	252.62	252.47	252.52	252.28	252.24	252.46	252.48	252.42	252.33 -	18
19	252.48	252.55	252.57	252.69	252.44 -	252.49	252.29	252.25	252.58	252.42	252.42	252.35	19
20	252.54	252.54	252.54	252.95	252.44 -	252.47	252.27	252.23	252.51	252.41	252.49	252.70	20
21	252.51	252.53	252.53	253.07 +	252.51	252.56	252.26	252.22	252.42	252.43	252.48	252.65	21
22	252.48	252.51	252.50	252.99	252.62	252.47	252.24	252.20	252.38	252.40	252.54	252.56	22
23	252.46	252.50	252.48	252.88	252.56	252.44	252.23	252.19 -	252.35	252.41	252.50	252.59	23
24	252.45	252.48	252.47	252.79	252.56	252.44	252.32	252.41	252.32	252.50	252.74	252.55	24
25	252.44	252.46	252.46	252.72	252.52	252.43	252.25	252.49	252.30	252.42	252.76	252.84	25
26	252.43	252.45	252.45	252.67	252.54	252.41	252.21	252.25	252.28	252.38	252.65	253.36 +	26
27	252.42 -	252.43	252.45	252.74	252.51	252.40	252.18 -	252.36	252.26	252.46	252.58	253.19	27
28	252.47	252.42 -	252.54	252.81	252.47	252.39 -	252.22	252.25	252.25	252.47	252.52	253.00	28
29	252.50		252.60	252.72	252.64	252.41	253.11 +	252.32	252.24	252.67 +	252.48	253.06	29
30	252.77		252.65	252.67	252.62	252.40	252.87	252.27	252.24	252.56	252.49	252.93	30
31	252.89 +		252.71		252.74 +		252.55	252.24	252.47	252.47		252.83	31
Monatsmittel	252.58	252.71 +	252.56	252.71 +	252.55	252.70	252.37	252.34	252.33 -	252.42	252.60	252.57	
Maximum	252.92	253.59	252.81 -	253.10	253.17	253.65 +	253.33	252.88	252.91	252.82	252.95	253.44	
Datum	31.01	02.02	11.03	12.04	31.05	01.06	29.07	27.08	08.09	29.10	10.11	26.12	
Amplitude	0.50	1.17	0.40	0.66	0.74	1.28	1.15	0.70	0.76	0.62	0.55	1.11	
Jahr 2013	Mittel	252.53 m ü.M.		Maximum	253.65 (01.Jun)		Minimum	252.15 (07.Sep)		Amplitude	1.50 m		



Periode	2002 - 2013												
Monatsmittel	252.48	252.39	252.47	252.46	252.38	252.36	252.33 -	252.36	252.35	252.39	252.44	252.55 +	
Maximum	253.26	253.59	253.25	253.79	253.17 -	253.65	253.38	254.28 +	253.52	253.51	253.64	253.54	
Jahr	2010	2013	2006	2006	2013	2013	2012	2007	2008	2002	2012	2012	
Minimum	251.73	251.66	251.61 -	251.85	251.96	251.79	251.95	252.07	252.10	252.13 +	252.09	252.06	
Jahr	2005	2005	2005	2005	2005	2005	2006	2003	2003	2003	2011	2004	
Amplitude	1.00	1.17	1.01	1.16	0.99 -	1.28	1.15	1.95 +	1.34	1.03	1.23	1.13	
Jahr	2005	2013	2006	2006	2002	2013	2013	2007	2008	2012	2012	2010	
Periode	Mittel	252.41 m ü.M.		Maximum	254.28 (09.Aug 2007)		Minimum	251.61 (10.Mrz 2005)		Amplitude	2.67 m		

Darstellung der letzten 12 Jahre

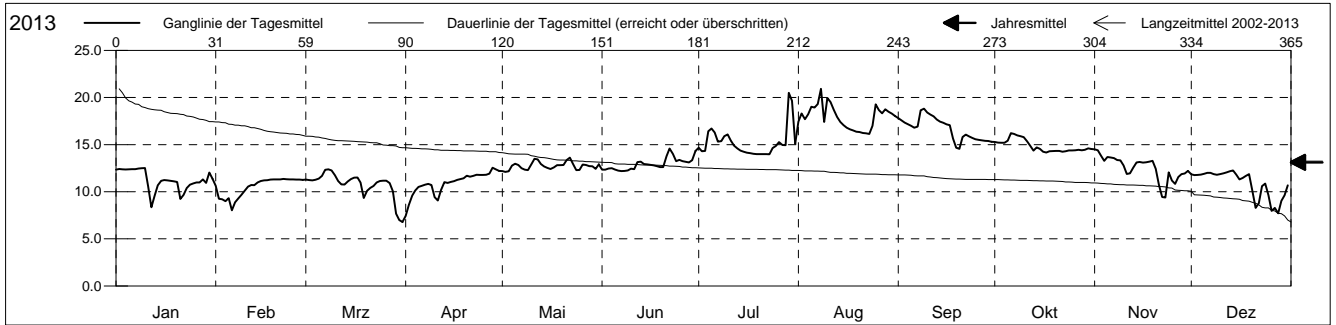


Grundwassertemperatur

Birstal
 Birsfelden 17.J.01 Hagnau
 Abstichpunkt: 0.00 m ü.M.
 OK Terrain: 0.00 m ü.M.

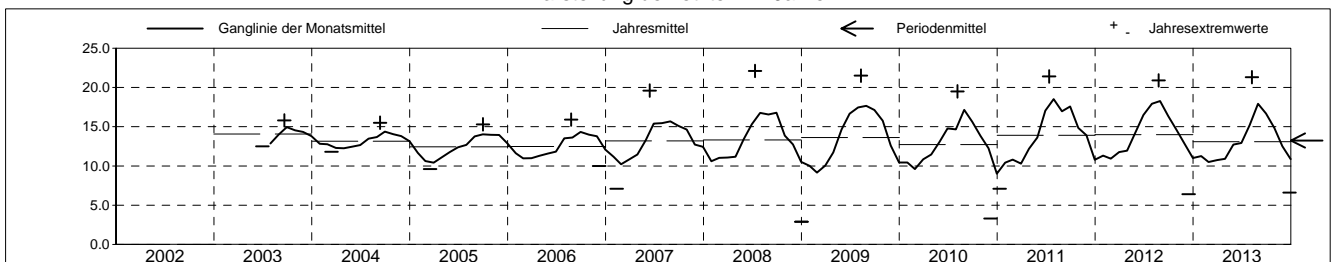
Amt für Umweltschutz und Energie
Kanton Basel-Landschaft
 Koordinaten: 0.00 / 0.00

2013	Januar	Februar	März	April	Mai	Juni	Juli	August	September	Oktober	November	Dezember	
1	12.4	10.6	11.3	7.4 -	12.2	12.4	14.7	17.4	17.8	15.3	14.5 +	11.9	1
2	12.4	9.2	11.2	8.6	12.1 -	12.3	14.3	18.3	17.6	15.2	14.4	11.8	2
3	12.4	9.2	11.2	9.6	12.2	12.5	14.3	17.7	17.3	15.2	13.8	11.8	3
4	12.4	9.0	11.3	10.1	12.8	12.5	16.4	18.2	17.2	15.2	13.3	11.8	4
5	12.4	9.3	11.4	10.5	13.0	12.4	16.7	19.0	17.0	15.4	13.7	11.9	5
Tagesmittel													
6	12.4	8.0 -	11.7	10.6	12.8	12.3	16.3	18.9	16.8	16.2 +	13.6	12.0	6
7	12.4	8.9	12.3	10.8	12.5	12.2 -	15.3	19.3	16.9	16.1	13.6	12.0	7
8	12.5 +	9.3	12.4 +	10.8	12.3	12.2 -	15.4	20.9 +	18.6	16.0	13.4	11.9	8
9	12.5 +	9.7	12.3	10.7	12.3	12.3	15.9	17.4	18.8 +	15.9	13.3	11.8	9
10	12.5 +	10.1	11.8	9.4	12.9	12.4	16.1	20.0	18.4	15.8	12.8	11.9	10
11	10.6	10.5	11.1	9.1	13.5	12.4	15.4	19.5	18.2	15.4	11.9	12.0	11
12	8.4 -	10.7	10.8	10.2	13.4	13.1	14.9	18.7	18.0	14.9	11.9	12.1	12
13	9.6	10.7	10.8	11.0	12.9	13.2	14.6	17.9	17.7	14.4	12.5	12.2	13
14	10.7	11.0	11.1	10.9	12.7	12.9	14.4	17.4	17.4	14.7	13.1	12.3 +	14
15	11.1	11.1	11.3	11.0	12.5	12.9	14.2	17.1	17.3	14.5	13.2	11.8	15
Max. +													
16	11.3	11.2	11.5	11.1	12.4	12.9	14.1	16.8	17.2	14.2 -	13.1	11.3	16
17	11.2	11.2	11.5	11.3	12.6	12.8	14.1	16.6	17.1	14.2 -	13.1	11.5	17
18	11.1	11.3	11.0	11.3	12.8	12.7	14.0 -	16.5	15.7	14.3	13.2	11.7	18
19	11.1	11.3	9.3	11.4	12.8	12.6	14.0 -	16.4	14.7	14.3	13.3	11.9	19
20	11.0	11.3	10.1	11.7	12.8	12.6	14.0 -	16.3	14.5 -	14.3	12.4	10.1	20
Min. -													
21	9.2	11.3	10.4	11.6	13.4	13.8	14.0 -	16.2	15.8	14.3	10.7	8.3	21
22	9.7	11.4 +	10.6	11.7	13.6 +	14.6 +	14.0 -	16.2	16.1	14.2 -	9.4 -	8.8	22
23	10.4	11.3	11.0	11.8	12.9	14.0	14.0 -	16.1 -	15.9	14.3	9.4 -	10.6	23
24	10.7	11.3	11.1	11.8	12.3	13.2	14.6	17.0	15.7	14.4	12.1	10.9	24
25	10.9	11.3	11.2	11.8	12.3	13.4	14.9	19.3	15.6	14.4	11.2	9.7	25
26	11.0	11.3	11.2	11.8	12.9	13.3	15.3	18.7	15.5	14.4	10.8	8.0	26
27	11.0	11.3	10.9	11.9	12.8	13.2	15.0	18.3	15.5	14.5	11.6	8.3	27
28	11.3	11.3	10.1	12.5 +	12.7	13.1	14.9	18.7	15.4	14.4	11.9	7.7 -	28
29	10.9	7.7	12.4	12.7	13.3	20.5 +	18.5	15.4	14.4	11.9	9.0	29	29
30	12.0	7.0	12.2	12.4	14.3	19.6	18.3	15.3	14.6	12.2	9.6	30	30
31	11.4	6.8 -	12.9	15.1	18.0								31
Monatsmittel	11.3	10.5 -	10.8	10.9	12.7	12.9	15.2	17.9 +	16.7	14.8	12.5	10.9	
Maximum	12.6	11.4 -	12.5	12.7	13.9	14.7	21.0	21.3 +	19.1	16.4	14.6	12.4	
Datum	10.01	19.02	07.03	28.04	22.05	21.06	29.07	08.08	08.09	06.10	01.11	14.12	
Minimum	8.2	7.6	6.7	7.0	12.1	12.2	13.8	14.3	14.4 +	14.0	8.8	6.6 -	
Datum	12.01	02.02	30.03	01.04	01.05	06.06	03.07	01.08	20.09	13.10	23.11	26.12	
Amplitude	4.4	3.8	5.8	5.7	1.8	2.5	7.2	7.0	4.7	2.4	5.8	5.8	
Jahr 2013	Mittel	13.1 °C		Maximum	21.3 (08.Aug)		Minimum	6.6 (26.Dez)		Amplitude	14.7 °C		



Periode	2002 - 2013												
Monatsmittel	11.1	10.7 -	10.9	11.5	13.1	14.5	15.3	15.9 +	15.7	14.4	13.2	11.6	
Maximum	13.5	13.0	12.8	12.7 -	18.5	21.3	22.1 +	21.5	21.0	17.4	14.7	14.1	
Jahr	2004	2004	2004	2013	2009	2011	2008	2009	2011	2009	2009	2003	
Minimum	2.9 -	5.3	5.6	7.0	11.3	11.7	12.2	12.9	13.5 +	7.9	8.8	2.9 -	
Jahr	2009	2009	2009	2013	2005	2006	2006	2005	2005	2008	2013	2008	
Amplitude	9.3	6.1	6.0	5.7 -	6.3	6.6	8.4	7.0	6.3	7.2	5.8	10.1 +	
Jahr	2009	2009	2009	2013	2009	2011	2008	2013	2011	2008	2013	2008	
Periode	Mittel	13.2 °C		Maximum	22.1 (11.Jul 2008)		Minimum	2.9 (31.Dez 2008)		Amplitude	19.2 °C		

Darstellung der letzten 12 Jahre

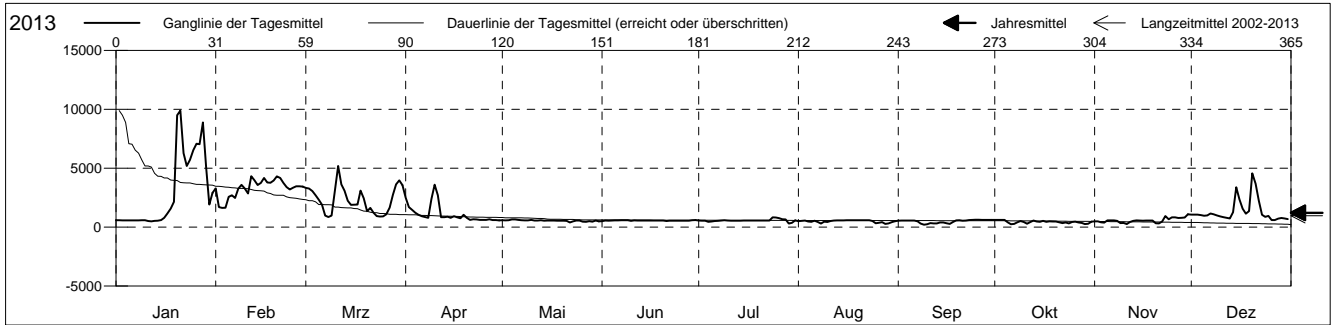


Leitfähigkeit

Birstal
 Birsfelden 17.J.01 Hagnau
 Abstichpunkt: 0.00 m ü.M.
 OK Terrain: 0.00 m ü.M.

Amt für Umweltschutz und Energie
Kanton Basel-Landschaft
 Koordinaten: 0.00 / 0.00

2013	Januar	Februar	März	April	Mai	Juni	Juli	August	September	Oktober	November	Dezember	
1	584	3291	3325	2493	584	505 -	558	505	542	614 +	486	1060	1
2	581	1690	3269	1693	575	551	549	530	556	613	495	1062	2
3	575	1631 -	3063	1453	582	548	544	559	556	613	407	1059	3
4	573	1646	2703	1220	656 +	555	452	478	557	613	379	1020	4
5	572	2558	2330	1039	653	568	473	452	558	399	571	965	5
6	571	2699	1909	917	609	577	513	550	558	244 -	574	986	6
7	569	2474	983	855	589	581	534	425	495	275	574	1158	7
8	574	3253	853 -	795	571	581	563	293	295	403	535	1084	8
9	580	3579	977	2396	570	579	578	465	203 -	511	332	990	9
10	580	3286	3128	3592 +	612	533	550	435	245	426	343	906	10
11	517	2847	5190 +	2707	561	572	548	517	342	284	255 -	838	11
12	487 -	4313 +	3622	842	563	557	548	557	313	423	437	778	12
13	533	4003	3079	837	579	557	548	568	317	556	533	728	13
14	544	3572	2240	880	548	554	549	573	389	482	569	1264	14
15	590	3750	1894	791	553	557	550	575	383	445	562	3386	15
Max. +	793	4167	1900	921	560	561	551	577	322	535	550	2344	16
17	1153	3786	1919	827	559	562	552	577	271	449	554	1565	17
18	1573	3763	3103	747	549	561	554	578	431	494	558	1147	18
19	2143	3952	2441	1049	541	560	555	577	568	482	553	1354	19
20	9499	4297	1341	783	542	556	556	579	587	478	322	4562 +	20
Min. -	9891 +	4169	1628	614	533	521	557	580 +	543	404	310	3684	21
22	6276	3745	1225	660	395 -	542	558	579	556	343	478	2246	22
23	5194	3397	941	652	485	547	560	577	590	395	931	1044	23
24	5700	3193	902	610	554	550	837 +	515	611	314	664	867	24
25	6531	3346	910	608	552	548	820	327	618 +	430	826	952	25
26	7083	3470	1086	608	466	547	753	364	618 +	461	826	597	26
27	7042	3468	1658	660	452	547	664	416	616	383	773	591 -	27
28	8883	3437	2731	592	501	548	650	266 -	614	346	779	713	28
29	5103	3630	593	462	462	581	299 -	315	614	256	815	766	29
30	1917	3961	573 -	553	594 +	360	420	615	290	1086 +	724	30	30
31	2899	3560	484				574	504	461		680		31
Monatsmittel	2907	3314 +	2306	1100	548	557	563	491	483	433 -	569	1327	
Maximum	12318 +	4696	6459	4517	692	622	982	659	620	615 -	1377	4963	
Datum	20.01	12.02	10.03	09.04	05.05	29.06	24.07	24.08	26.09	01.10	30.11	20.12	
Minimum	433	1005 +	677	572	360	438	190 -	252	191	218	203	393	
Datum	11.01	02.02	08.03	30.04	22.05	10.06	29.07	28.08	09.09	06.10	11.11	26.12	
Amplitude	11885	3691	5782	3945	332	184	792	407	429	397	1174	4570	
Jahr 2013	Mittel	1205		Maximum	12318 (20.Jan)		Minimum	190 (29.Jul)		Amplitude	12128		



Periode	2002 - 2013												
Monatsmittel	2113	2314 +	1325	726	557	499	483	478	476 -	482	662	1688	
Maximum	21169	27841 +	9725	4517	1560	770	982	659	620 -	861	9911	19000	
Jahr	2010	2012	2010	2013	2010	2011	2013	2013	2013	2012	2010	2010	
Minimum	431	562 +	346	415	210	187	155	133	115 -	115 -	153	163	
Jahr	2010	2012	2009	2011	2010	2010	2009	2010	2008	2008	2010	2009	
Amplitude	20738	27279 +	9003	3945	1350	561	792	451 -	457	717	9758	18361	
Jahr	2010	2012	2010	2013	2010	2011	2013	2010	2008	2012	2010	2010	
Periode	Mittel	961		Maximum	27841 (15.Feb 2012)		Minimum	115 (14.Sep 2008)		Amplitude	27726		

Darstellung der letzten 12 Jahre

