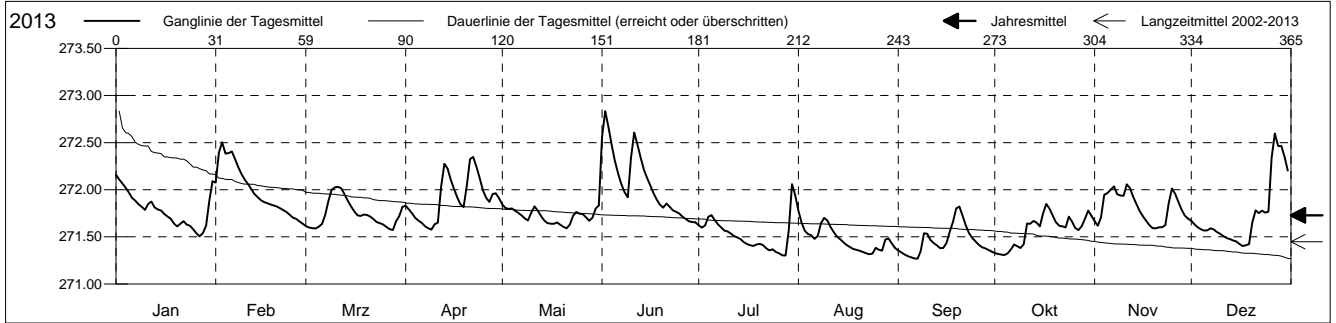


Grundwasserstände

Birstal
 Arlesheim 13.C.20 Widenhof
 Abstichpunkt: 0.00 m ü.M.
 OK Terrain: 0.00 m ü.M.

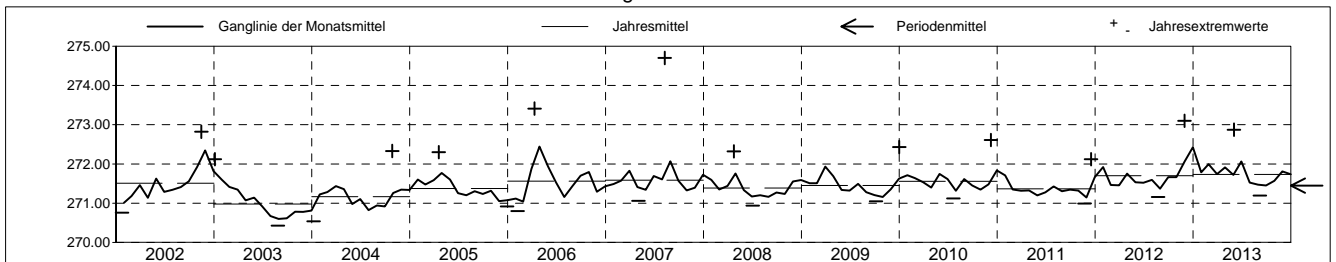
Amt für Umweltschutz und Energie
Kanton Basel-Landschaft
 Koordinaten: 0.00 / 0.00

2013	Januar	Februar	März	April	Mai	Juni	Juli	August	September	Oktober	November	Dezember	
1	272.16 +	272.08	271.61	271.83	271.84 +	272.56	271.62	271.78 +	271.35	271.33	271.67	271.67	1
2	272.11	272.39	271.60	271.79	271.81	272.84 +	271.60	271.65	271.33	271.32	271.62	271.64	2
3	272.07	272.51 +	271.59	271.75	271.80	272.66	271.62	271.56	271.31	271.31 -	271.71	271.60	3
4	272.02	272.38	271.59	271.70	271.80	272.47	271.71	271.53	271.30	271.31 -	271.94	271.58	4
5	271.97	272.39	271.61	271.67	271.78	272.31	271.73	271.52	271.28	271.33	271.96	271.57	5
Tagesmittel													
6	271.91	272.41	271.64	271.65	271.75	272.17	271.68	271.48	271.27 -	271.37	272.00	271.57	6
7	271.88	272.33	271.73	271.61	271.73	272.06	271.63	271.51	271.27 -	271.42	272.04	271.59	7
8	271.85	272.24	271.88	271.59	271.70	271.97	271.60	271.64	271.35	271.40	271.95	271.58	8
9	271.82	272.17	272.00	271.58 -	271.67	271.92	271.57	271.70	271.54	271.38	271.94	271.55	9
10	271.79	272.11	272.02	271.63	271.76	272.34	271.56	271.67	271.53	271.42	271.93	271.53	10
11	271.85	272.06	272.03 +	271.65	271.82	272.61	271.53	271.61	271.47	271.64	272.06 +	271.51	11
12	271.87	272.01	272.01	272.03	271.78	272.48	271.51	271.55	271.43	271.64	272.02	271.49	12
13	271.81	271.96	271.95	272.28	271.72	272.34	271.49	271.50	271.41	271.67	271.93	271.48	13
14	271.79	271.92	271.89	272.22	271.67	272.21	271.48	271.47	271.38	271.65	271.85	271.46	14
15	271.78	271.89	271.82	272.11	271.65	272.12	271.45	271.44	271.38	271.61	271.78	271.45	15
Max. +													
16	271.74	271.87	271.77	272.01	271.64	272.04	271.43	271.41	271.44	271.75	271.72	271.42	16
17	271.72	271.86	271.73	271.92	271.64	271.96	271.41	271.39	271.56	271.85 +	271.67	271.40 -	17
18	271.69	271.84	271.72	271.85	271.65	271.90	271.40	271.37	271.66	271.80	271.62	271.41	18
19	271.64	271.83	271.74	271.82	271.63	271.84	271.42	271.36	271.80	271.73	271.59 -	271.42	19
20	271.61	271.82	271.73	272.04	271.61	271.81	271.43	271.35	271.82 +	271.66	271.59 -	271.65	20
Min. -													
21	271.64	271.80	271.71	272.32	271.59 -	271.85	271.41	271.34	271.72	271.62	271.60	271.78	21
22	271.67	271.78	271.69	272.35 +	271.63	271.82	271.38	271.33	271.62	271.61	271.60	271.75	22
23	271.63	271.76	271.66	272.24	271.72	271.78	271.36	271.32 -	271.54	271.60	271.62	271.78	23
24	271.62	271.73	271.65	272.12	271.76	271.77	271.37	271.32 -	271.49	271.71	271.86	271.76	24
25	271.58	271.70	271.63	271.99	271.75	271.75	271.34	271.38	271.45	271.66	272.01	271.77	25
26	271.54	271.69	271.61	271.91	271.74	271.71	271.33	271.36	271.42	271.59	271.96	272.34	26
27	271.51 -	271.66	271.58	271.87	271.71	271.69	271.30 -	271.35	271.39	271.57	271.87	272.60 +	27
28	271.54	271.64 -	271.57 -	271.95	271.67	271.66	271.30 -	271.47	271.38	271.61	271.79	272.46	28
29	271.62		271.67	271.96	271.70	271.66	271.58	271.48	271.36	271.69	271.73	272.46	29
30	271.88		271.72	271.91	271.80	271.65 -	272.06 +	271.43	271.34	271.78	271.70	272.35	30
31	272.09		271.82	271.83	271.83	271.83	271.94	271.38	271.38	271.72	271.72	272.20	31
Monatsmittel	271.79	271.99	271.74	271.91	271.72	272.06 +	271.52	271.47	271.45 -	271.57	271.81	271.74	
Maximum Datum	272.20 01.01	272.58 02.02	272.07 11.03	272.41 21.04	272.01 31.05	272.87 + 02.06	272.10 30.07	271.81 - 01.08	271.89 19.09	271.87 16.10	272.10 11.11	272.62 27.12	
Amplitude	0.77	0.99	0.57	0.90	0.48	1.30	0.88	0.57	0.69	0.63	0.57	1.28	
Jahr 2013	Mittel	271.73 m ü.M.		Maximum	272.87 (02.Jun)		Minimum	271.19 (07.Sep)		Amplitude	1.68 m		



Periode	2002 - 2013												
Monatsmittel	271.52	271.44	271.58	271.59 +	271.46	271.40	271.28 -	271.33	271.33	271.39	271.47	271.59 +	
Maximum Jahr	272.49 2010	272.58 2013	272.60 2006	273.41 2006	272.46 2002	272.87 2013	272.17 - 2002	274.70 + 2007	273.20 2006	272.76 2002	273.10 2012	272.91 2012	
Minimum Jahr	270.54 2004	270.80 2006	271.00 2006	271.02 + 2002	270.78 2004	270.69 2003	270.54 2003	270.43 - 2003	270.50 2003	270.60 2003	270.67 2003	270.67 2003	
Amplitude Jahr	1.29 2004	0.99 - 2013	1.60 2006	1.56 2012	1.36 2002	1.30 2013	1.10 2002	3.46 + 2007	2.10 2006	1.55 2004	1.56 2012	1.33 2010	
Periode	Mittel	271.45 m ü.M.		Maximum	274.70 (10.Aug 2007)		Minimum	270.43 (27.Aug 2003)		Amplitude	4.27 m		

Darstellung der letzten 12 Jahre

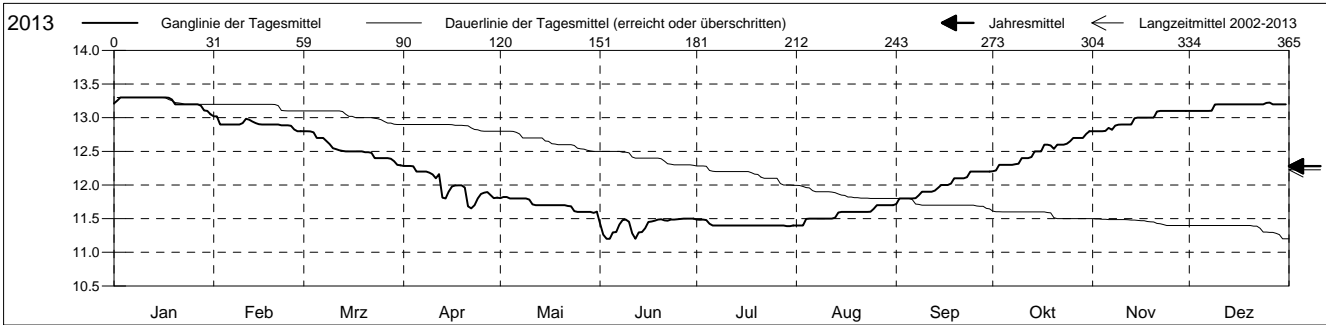


Grundwassertemperatur

Birstal
 Arlesheim 13.C.20 Widenhof
 Abstichpunkt: 0.00 m ü.M.
 OK Terrain: 0.00 m ü.M.

Amt für Umweltschutz und Energie
Kanton Basel-Landschaft
 Koordinaten: 0.00 / 0.00

2013	Januar	Februar	März	April	Mai	Juni	Juli	August	September	Oktober	November	Dezember	
1	13.2	13.0 +	12.8 +	12.3 +	11.8 +	11.4	11.5 +	11.4 -	11.7 -	12.2 -	12.8 -	13.1 -	1
2	13.3 +	13.0 +	12.8 +	12.3 +	11.8 +	11.3	11.5 +	11.4 -	11.8	12.2 -	12.8 -	13.1 -	2
3	13.3 +	12.9	12.8 +	12.3 +	11.8 +	11.2 -	11.5 +	11.4 -	11.8	12.3	12.8 -	13.1 -	3
4	13.3 +	12.9	12.8 +	12.3 +	11.8 +	11.2 -	11.5 +	11.5	11.8	12.3	12.8 -	13.1 -	4
5	13.3 +	12.9	12.7	12.2	11.8 +	11.3	11.4 -	11.5	11.8	12.3	12.8 -	13.1 -	5
Tagesmittel													
6	13.3 +	12.9	12.7	12.2	11.8 +	11.3	11.4 -	11.5	11.8	12.3	12.9	13.1 -	6
7	13.3 +	12.9	12.7	12.2	11.8 +	11.4	11.4 -	11.5	11.8	12.3	12.8 -	13.1 -	7
8	13.3 +	12.9	12.7	12.2	11.8 +	11.5 +	11.4 -	11.5	11.8	12.3	12.9	13.1 -	8
9	13.3 +	12.9	12.6	12.2	11.8 +	11.5 +	11.4 -	11.5	11.9	12.3	12.9	13.2 +	9
10	13.3 +	12.9	12.5	12.2	11.8 +	11.5 +	11.4 -	11.5	11.9	12.4	12.9	13.2 +	10
11	13.3 +	13.0 +	12.5	12.1	11.7	11.3	11.4 -	11.5	11.9	12.4	12.9	13.2 +	11
12	13.3 +	13.0 +	12.5	12.2	11.7	11.2 -	11.4 -	11.5	11.9	12.4	12.9	13.2 +	12
13	13.3 +	12.9	12.5	11.8	11.7	11.3	11.4 -	11.5	11.9	12.4	12.9	13.2 +	13
14	13.3 +	12.9	12.5	11.8	11.7	11.3	11.4 -	11.6	12.0	12.5	13.0	13.2 +	14
15	13.3 +	12.9	12.5	11.9	11.7	11.4	11.4 -	11.6	12.0	12.5	13.0	13.2 +	15
Max. +													
16	13.3 +	12.9	12.5	12.0	11.7	11.4	11.4 -	11.6	12.0	12.5	13.0	13.2 +	16
17	13.3 +	12.9	12.5	12.0	11.7	11.5 +	11.4 -	11.6	12.0	12.6	13.0	13.2 +	17
18	13.3 +	12.9	12.5	12.0	11.7	11.5 +	11.4 -	11.6	12.0	12.6	13.0	13.2 +	18
19	13.3 +	12.9	12.5	12.0	11.7	11.5 +	11.4 -	11.6	12.1	12.6	13.0	13.2 +	19
20	13.2	12.9	12.5	12.0	11.7	11.5 +	11.4 -	11.6	12.1	12.5	13.0	13.2 +	20
Min. -													
21	13.2	12.9	12.5	11.7 -	11.7	11.5 +	11.4 -	11.6	12.1	12.6	13.1 +	13.2 +	21
22	13.2	12.9	12.5	11.7 -	11.7	11.5 +	11.4 -	11.6	12.1	12.6	13.1 +	13.2 +	22
23	13.2	12.9	12.4	11.7 -	11.7	11.5 +	11.4 -	11.6	12.1	12.6	13.1 +	13.2 +	23
24	13.2	12.9	12.4	11.8	11.6 -	11.5 +	11.4 -	11.6	12.2 +	12.6	13.1 +	13.2 +	24
25	13.2	12.9	12.4	11.9	11.6 -	11.5 +	11.4 -	11.6	12.2 +	12.6	13.1 +	13.2 +	25
26	13.2	12.8 -	12.4	11.9	11.6 -	11.5 +	11.4 -	11.7 +	12.2 +	12.7	13.1 +	13.2 +	26
27	13.2	12.8 -	12.4	11.9	11.6 -	11.5 +	11.4 -	11.7 +	12.2 +	12.7	13.1 +	13.2 +	27
28	13.2	12.8 -	12.4	11.8	11.6 -	11.5 +	11.4 -	11.7 +	12.2 +	12.7	13.1 +	13.2 +	28
29	13.1 -		12.4	11.8	11.6 -	11.5 +	11.4 -	11.7 +	12.2 +	12.7	13.1 +	13.2 +	29
30	13.1 -		12.3 -	11.8	11.6 -	11.5 +	11.4 -	11.7 +	12.2 +	12.8 +	13.1 +	13.2 +	30
31	13.1 -		12.3 -		11.6 -		11.4 -	11.7 +		12.8 +		13.2 +	31
Monatsmittel	13.2 +	12.9	12.5	12.0	11.7	11.4 -	11.4 -	11.6	12.0	12.5	13.0	13.2 +	
Maximum	13.3	13.2	12.8	12.4	11.9	11.7	11.5 -	11.7	12.2	12.8	13.1	13.5 +	
Datum	01.01	02.02	01.03	12.04	01.05	01.06	01.07	24.08	23.09	30.10	21.11	26.12	
Minimum	13.0	12.8	12.2	11.6	11.5	11.2 -	11.2 -	11.4	11.7	12.2	12.8	13.1 +	
Datum	31.01	22.02	31.03	21.04	30.05	01.06	29.07	01.08	01.09	01.10	01.11	01.12	
Amplitude	0.3	0.4	0.6	0.8	0.4	0.5	0.3	0.3	0.5	0.6	0.3	0.4	
Jahr 2013	Mittel	12.3 °C		Maximum	13.5 (26.Dez)		Minimum	11.2 (01.Jun)		Amplitude	2.3 °C		



Periode	2002 - 2013												
Monatsmittel	13.3 +	12.9	12.4	11.7	11.3	11.1 -	11.2	11.5	12.0	12.6	13.1	13.3 +	
Maximum	13.6	13.4	12.9	12.4	11.9 -	12.2	12.5	12.6	12.8	13.1	13.5	13.7 +	
Jahr	2009	2009	2009	2013	2013	2009	2009	2007	2009	2007	2008	2008	
Minimum	12.9 +	12.4	11.7	11.1	10.5	10.4 -	10.4 -	10.6	10.8	11.7	12.5	12.9 +	
Jahr	2011	2008	2008	2008	2009	2009	2011	2008	2006	2006	2006	2006	
Amplitude	0.3 -	0.6	1.0	0.8	0.7	1.8 +	0.6	1.0	1.1	0.8	0.6	0.4	
Jahr	2008	2008	2009	2009	2009	2009	2009	2007	2008	2006	2008	2013	
Periode	Mittel	12.2 °C		Maximum	13.7 (16.Dez 2008)		Minimum	10.4 (03.Jun 2009)		Amplitude	3.3 °C		

Darstellung der letzten 12 Jahre

