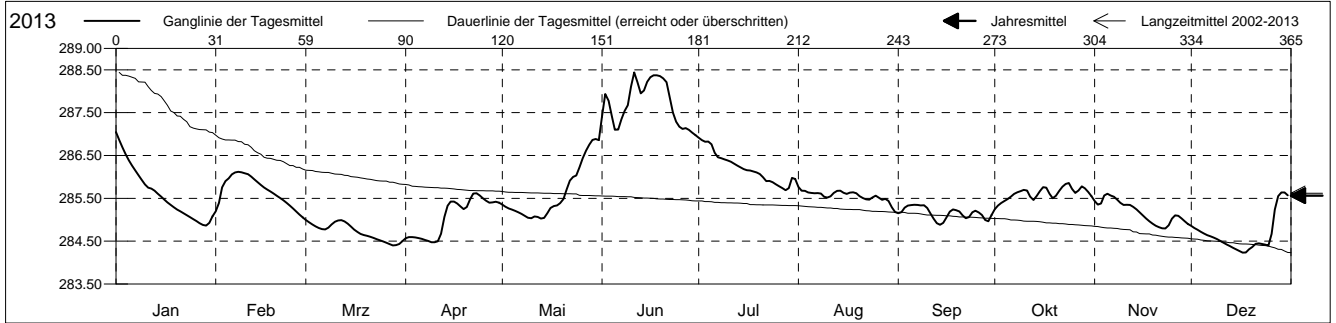


**Grundwasserstände**

Birstal  
 Aesch 11.J.2 Bahnhof  
 Abstichpunkt: 0.00 m ü.M.  
 OK Terrain: 0.00 m ü.M.

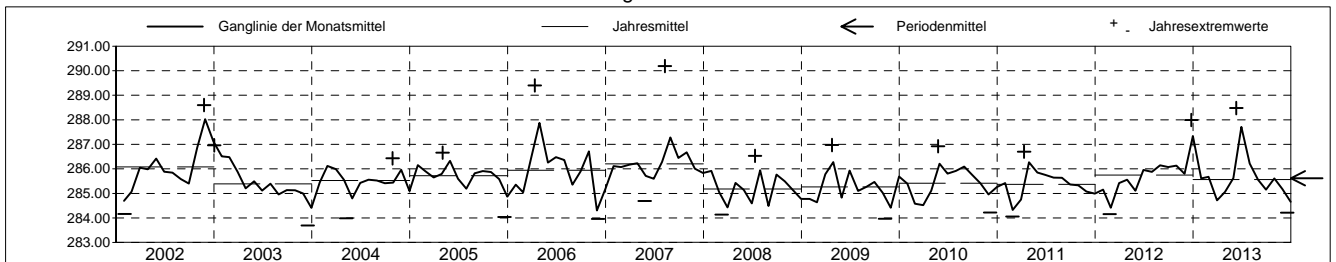
**Amt für Umweltschutz und Energie**  
**Kanton Basel-Landschaft**  
 Koordinaten: 0.00 / 0.00

2013	Januar	Februar	März	April	Mai	Juni	Juli	August	September	Oktober	November	Dezember	
1	287.05 +	285.20	285.00 +	284.57	285.35	287.42	286.92 +	285.77 +	285.15	285.24 -	285.44	284.86	1
2	286.86	285.39	284.94	284.60	285.31	287.94	286.86	285.68	285.18	285.33	285.35	284.81	2
3	286.69	285.75	284.89	284.60	285.26	287.78	286.82	285.67	285.28	285.39	285.38	284.76	3
4	286.53	285.90	284.84	284.59	285.24	287.42	286.82	285.64	285.33	285.44	285.57	284.72	4
5	286.39	285.96	284.81	284.57	285.21	287.10	286.76	285.63	285.34	285.48	285.61 +	284.68	5
Tagesmittel													
6	286.27	286.06	284.78	284.55	285.17	287.10	286.56	285.62	285.35 +	285.54	285.56	284.64	6
7	286.15	286.10	284.77	284.53	285.13	287.35	286.46	285.62	285.35 +	285.60	285.53	284.61	7
8	286.04	286.12 +	284.81	284.50	285.09	287.54	286.44	285.61	285.33	285.64	285.47	284.58	8
9	285.93	286.11	284.89	284.48	285.05	287.67	286.41	285.53	285.34	285.67	285.39	284.55	9
10	285.82	286.09	284.95	284.47 -	285.04	288.10	286.39	285.52	285.28	285.70	285.35	284.51	10
11	285.75	286.06	284.98	284.50	285.08	288.44 +	286.35	285.55	285.15	285.68	285.35	284.47	11
12	285.73	286.01	284.99	284.67	285.07	288.21	286.31	285.62	285.03	285.54	285.35	284.42	12
13	285.68	285.94	284.96	285.07	285.03 -	287.95	286.26	285.67	284.92	285.46	285.30	284.38	13
14	285.61	285.88	284.91	285.33	285.04	288.02	286.22	285.68	284.88 -	285.55	285.24	284.34	14
15	285.54	285.81	284.84	285.42	285.15	288.22	286.18	285.63	284.93	285.67	285.17	284.31	15
Max. +													
16	285.47	285.75	284.77	285.42	285.27	288.33	286.15	285.60	285.06	285.76	285.10	284.27	16
17	285.41	285.70	284.71	285.38	285.32	288.37	286.15	285.63	285.19	285.75	285.03	284.23 -	17
18	285.35	285.66	284.67	285.31	285.33	288.37	286.13	285.64	285.24	285.61	284.97	284.24	18
19	285.29	285.61	284.64	285.25	285.39	288.35	286.10	285.62	285.22	285.50	284.91	284.31	19
20	285.24	285.56	284.62	285.30	285.48	288.30	286.07	285.55	285.19	285.56	284.86	284.36	20
Min. -													
21	285.20	285.51	284.60	285.47	285.71	288.21	285.99	285.51	285.10	285.67	284.83	284.44	21
22	285.15	285.46	284.57	285.61	285.91	287.88	285.90	285.48	285.03	285.77	284.80 -	284.45	22
23	285.11	285.40	284.54	285.62 +	286.00	287.50	285.91	285.47	285.06	285.83	284.80 -	284.44	23
24	285.06	285.33	284.52	285.57	286.03	287.29	285.88	285.52	285.17	285.86 +	284.87	284.42	24
25	285.01	285.26	284.49	285.50	286.22	287.17	285.83	285.56	285.21	285.72	285.02	284.40	25
26	284.97	285.19	284.46	285.44	286.43	287.12	285.78	285.51	285.17	285.63	285.10	284.67	26
27	284.92	285.12	284.43	285.40	286.61	287.14	285.74	285.46	285.11	285.68	285.09	285.24	27
28	284.88	285.05 -	284.40 -	285.41	286.75	287.10	285.69 -	285.49	285.00	285.78	285.03	285.55	28
29	284.86 -		284.41	285.42	286.86	287.04	285.74	285.44	284.96	285.73	284.96	285.64 +	29
30	284.93		284.44	285.40	286.88 +	286.98 -	285.98	285.29	285.11	285.65	284.90	285.64 +	30
31	285.08		284.50		286.86		285.95	285.18 -		285.55		285.57	31
Monatsmittel	285.61	285.68	284.72	285.06	285.62	287.71 +	286.22	285.56	285.16	285.61	285.18	284.66 -	
Maximum	287.13	286.12	285.02 -	285.63	286.98	288.48 +	286.94	285.86	285.35	285.88	285.62	285.66	
Datum	01.01	08.02	01.03	23.04	31.05	11.06	01.07	01.08	06.09	24.10	05.11	29.12	
Amplitude	2.28	1.10	0.63	1.17	1.97	1.53	1.27	0.70	0.48	0.69	0.83	1.44	
Jahr 2013	Mittel	285.56 m ü.M.		Maximum	288.48 (11.Jun)		Minimum	284.21 (18.Dez)		Amplitude	4.26 m		



Periode	2002 - 2013											
Monatsmittel	285.55	285.28 -	285.49	285.86 +	285.65	285.82	285.78	285.64	285.65	285.81	285.45	285.43
Maximum	287.13	286.72 -	287.41	289.40	287.14	288.48	286.94	290.19 +	287.13	288.10	288.60	288.32
Jahr	2013	2003	2006	2006	2006	2013	2013	2007	2006	2002	2002	2002
Minimum	284.30	284.06	284.14	284.24	283.99	284.35	284.38 +	284.06	284.00	284.29	283.97	283.69 -
Jahr	2002	2011	2008	2010	2004	2008	2005	2003	2003	2009	2009	2003
Amplitude	2.28	1.81	2.41	3.22	1.97	1.62 -	1.77	4.21 +	2.46	2.75	2.18	2.20
Jahr	2013	2008	2006	2006	2013	2007	2005	2007	2006	2006	2012	2002
Periode	Mittel	285.62 m ü.M.		Maximum	290.19 (10.Aug 2007)		Minimum	283.69 (17.Dez 2003)		Amplitude	6.50 m	

Darstellung der letzten 12 Jahre

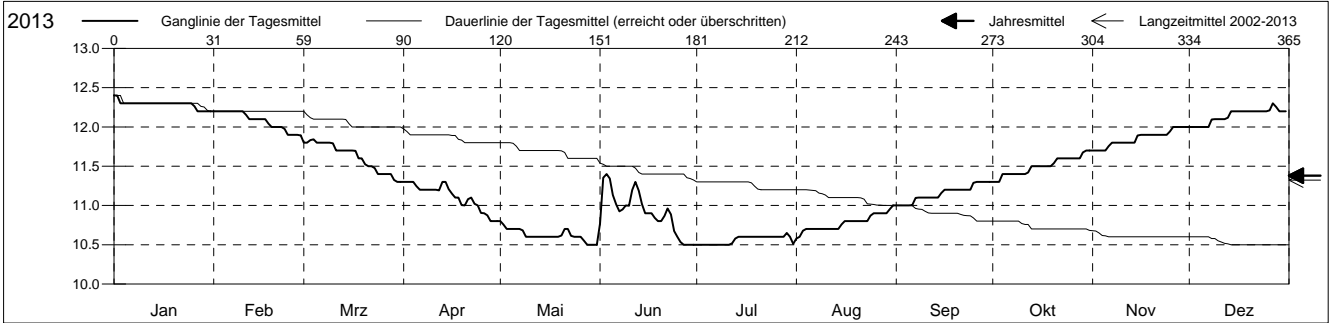


**Grundwassertemperatur**

Birstal  
 Aesch 11.J.2 Bahnhof  
 Abstichpunkt: 0.00 m ü.M.  
 OK Terrain: 0.00 m ü.M.

**Amt für Umweltschutz und Energie**  
**Kanton Basel-Landschaft**  
 Koordinaten: 0.00 / 0.00

2013	Januar	Februar	März	April	Mai	Juni	Juli	August	September	Oktober	November	Dezember	
1	12.4 +	12.2 +	11.8 +	11.3 +	10.8 +	10.8	10.5 -	10.6 -	11.0 -	11.3 -	11.7 -	12.0 -	1
2	12.4 +	12.2 +	11.8 +	11.3 +	10.8 +	11.4 +	10.5 -	10.6 -	11.0 -	11.3 -	11.7 -	12.0 -	2
3	12.3	12.2 +	11.8 +	11.3 +	10.7	11.4 +	10.5 -	10.7	11.0 -	11.3 -	11.7 -	12.0 -	3
4	12.3	12.2 +	11.8 +	11.3 +	10.7	11.3	10.5 -	10.7	11.0 -	11.4	11.7 -	12.0 -	4
5	12.3	12.2 +	11.8 +	11.2	10.7	11.1	10.5 -	10.7	11.0 -	11.4	11.7 -	12.0 -	5
6	12.3	12.2 +	11.8 +	11.2	10.7	11.0	10.5 -	10.7	11.0 -	11.4	11.8	12.0 -	6
7	12.3	12.2 +	11.8 +	11.2	10.7	10.9	10.5 -	10.7	11.1	11.4	11.8	12.0 -	7
8	12.3	12.2 +	11.8 +	11.2	10.7	10.9	10.5 -	10.7	11.1	11.4	11.8	12.1	8
9	12.3	12.2 +	11.8 +	11.2	10.6	11.0	10.5 -	10.7	11.1	11.4	11.8	12.1	9
10	12.3	12.2 +	11.8 +	11.2	10.6	11.0	10.5 -	10.7	11.1	11.4	11.8	12.1	10
11	12.3	12.2 +	11.7	11.2	10.6	11.2	10.5 -	10.7	11.1	11.4	11.8	12.1	11
12	12.3	12.1	11.7	11.2	10.6	11.3	10.5 -	10.7	11.1	11.4	11.8	12.1	12
13	12.3	12.1	11.7	11.3 +	10.6	11.2	10.6 +	10.7	11.1	11.5	11.8	12.1	13
14	12.3	12.1	11.7	11.3 +	10.6	11.0	10.6 +	10.7	11.1	11.5	11.8	12.2	14
15	12.3	12.1	11.7	11.2	10.6	10.9	10.6 +	10.8	11.2	11.5	11.9	12.2	15
16	12.3	12.1	11.7	11.1	10.6	10.9	10.6 +	10.8	11.2	11.5	11.9	12.2	16
17	12.3	12.1	11.7	11.1	10.6	10.9	10.6 +	10.8	11.2	11.5	11.9	12.2	17
18	12.3	12.0	11.6	11.1	10.6	10.8	10.6 +	10.8	11.2	11.5	11.9	12.2	18
19	12.3	12.0	11.6	11.0	10.6	10.8	10.6 +	10.8	11.2	11.5	11.9	12.2	19
20	12.3	12.0	11.5	11.0	10.6	10.8	10.6 +	10.8	11.2	11.5	11.9	12.2	20
21	12.3	12.0	11.5	11.1	10.7	10.9	10.6 +	10.8	11.2	11.6	11.9	12.2	21
22	12.3	12.0	11.5	11.1	10.7	11.0	10.6 +	10.8	11.2	11.6	11.9	12.2	22
23	12.3	12.0	11.5	11.0	10.6	10.9	10.6 +	10.8	11.2	11.6	11.9	12.2	23
24	12.3	11.9 -	11.4	11.0	10.6	10.7	10.6 +	10.9	11.2	11.6	11.9	12.2	24
25	12.3	11.9 -	11.4	10.9	10.6	10.6	10.6 +	10.9	11.3 +	11.6	11.9	12.2	25
26	12.3	11.9 -	11.4	10.9	10.6	10.5 -	10.6 +	10.9	11.3 +	11.6	12.0 +	12.2	26
27	12.2 -	11.9 -	11.4	10.9	10.6	10.5 -	10.6 +	10.9	11.3 +	11.6	12.0 +	12.3 +	27
28	12.2 -	11.9 -	11.4	10.8 -	10.5 -	10.5 -	10.6 +	10.9	11.3 +	11.6	12.0 +	12.3 +	28
29	12.2 -		11.3 -	10.8 -	10.5 -	10.5 -	10.6 +	10.9	11.3 +	11.7 +	12.0 +	12.2	29
30	12.2 -		11.3 -	10.8 -	10.5 -	10.5 -	10.6 +	11.0 +	11.3 +	11.7 +	12.0 +	12.2	30
31	12.2 -		11.3 -		10.5 -		10.5 -	11.0 +		11.7 +		12.2	31
Monatsmittel	12.3 +	12.1	11.6	11.1	10.6 -	10.9	10.6 -	10.8	11.2	11.5	11.9	12.1	
Maximum	12.4 +	12.2	11.9	11.3	10.8	11.4	10.7 -	11.0	11.3	11.7	12.0	12.3	
Datum	01.01	01.02	03.03	01.04	01.05	02.06	29.07	30.08	25.09	29.10	25.11	26.12	
Minimum	12.2 +	11.8	11.3	10.8	10.5 -	10.5 -	10.5 -	10.5 -	11.0	11.3	11.7	12.0	
Datum	26.01	28.02	29.03	27.04	27.05	01.06	01.07	01.08	01.09	01.10	01.11	01.12	
Amplitude	0.2	0.4	0.6	0.5	0.3	0.9	0.2	0.5	0.3	0.4	0.3	0.3	
Jahr 2013	Mittel	11.4 °C		Maximum	12.4 (01.Jan)		Minimum	10.5 (27.Mai)		Amplitude	1.9 °C		



Periode	2002 - 2013												
Monatsmittel	12.1	11.7	11.2	10.7	10.3 -	10.4	10.6	11.0	11.4	11.8	12.2	12.3 +	
Maximum	12.6	12.3	12.1	11.8	10.9 -	11.4	11.2	12.9	12.4	12.9	13.4 +	12.6	
Jahr	2010	2012	2006	2012	2007	2013	2007	2007	2011	2011	2011	2010	
Minimum	11.5	10.7	10.3	9.8	9.7 -	9.8	10.1	10.3	10.8	10.8	11.6	11.9 +	
Jahr	2008	2008	2008	2008	2008	2008	2006	2006	2006	2006	2006	2007	
Amplitude	0.6	0.8	1.1	1.2	0.7	0.9	0.7	1.7 +	0.7	0.8	1.1	0.4 -	
Jahr	2010	2008	2006	2012	2006	2013	2011	2007	2010	2006	2011	2005	
Periode	Mittel	11.3 °C		Maximum	13.4 (16.Nov 2011)		Minimum	9.7 (20.Mai 2008)		Amplitude	3.7 °C		

Darstellung der letzten 12 Jahre

