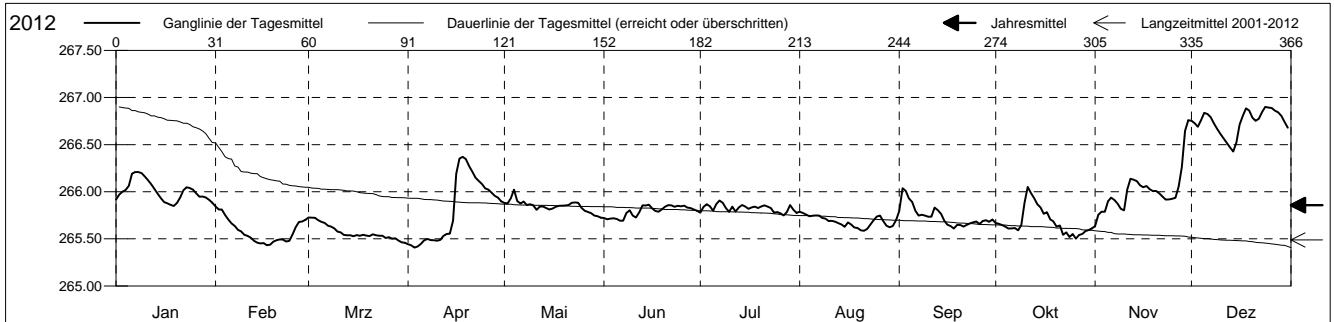


Grundwasserstände

Birstal
 Münchenstein 20.K.4 Hofmatt
 Abstichpunkt: 270.00 m ü.M.
 OK Terrain: 269.42 m ü.M.

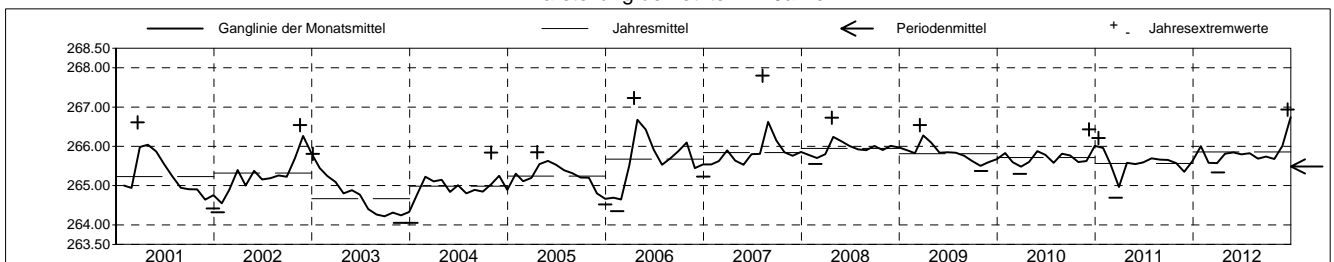
Amt für Umweltschutz und Energie
Kanton Basel-Landschaft
 Koordinaten: 0.00 / 0.00

2012	Januar	Februar	März	April	Mai	Juni	Juli	August	September	Oktober	November	Dezember	
1	265.92	265.84 +	265.73 +	265.44	265.88	265.72	265.78	265.79 +	265.80	265.67	265.64 -	266.75	1
2	265.97	265.81	265.73 +	265.43	265.88	265.71	265.84	265.78	266.04 +	265.66	265.76	266.73	2
3	266.00	265.81	265.72	265.41 -	265.93	265.71	265.87	265.76	266.01	265.65	265.79	266.69	3
4	266.02	265.75	265.70	265.42	266.02 +	265.72	265.85	265.74	265.93	265.63	265.79	266.76	4
5	266.06	265.70	265.68	265.45	265.90	265.71	265.80	265.74	265.89	265.61	265.90	266.84	5
Tagesmittel													
6	266.19	265.66	265.67	265.48	265.87	265.69 -	265.87	265.75	265.80	265.61	265.94	266.82	6
7	266.21 +	265.64	265.64	265.50	265.90	265.69 -	265.91 +	265.75	265.75	265.61	265.91	266.79	7
8	266.21 +	265.60	265.63	265.49	265.86	265.77	265.88	265.72	265.76	265.59	265.87	266.73	8
9	266.20	265.58	265.61	265.49	265.87	265.80	265.83	265.71	265.75	265.65	265.82	266.67	9
10	266.16	265.54	265.58	265.48	265.86	265.75	265.79	265.69	265.73	265.88	265.80	266.62	10
11	266.12	265.53	265.57	265.49	265.81	265.73	265.84	265.69	265.73	266.05 +	266.02	266.57	11
12	266.08	265.51	265.54	265.53	265.84	265.78	265.79	265.68	265.83	265.99	266.14	266.52	12
13	266.03	265.48	265.54	265.55	265.84	265.86 +	265.83	265.67	265.80	265.93	266.13	266.47	13
14	265.98	265.46	265.54	265.56	265.83	265.85	265.86	265.65	265.76	265.87	266.11	266.43 -	14
15	265.93	265.45	265.53	265.69	265.81	265.86 +	265.84	265.63	265.69	265.83	266.07	266.52	15
Max. +													
16	265.89	265.45	265.54	266.19	265.82	265.82	265.82	265.67	265.65	265.77	266.05	266.71	16
17	265.88	265.43 -	265.53	266.35	265.84	265.80	265.83	265.65	265.64	265.78	266.06	266.81	17
18	265.86	265.44	265.54	266.37 +	265.85	265.79	265.84	265.62	265.61 -	265.71	266.03	266.88	18
19	265.85 -	265.47	265.53	266.35	265.85	265.81	265.83	265.61	265.65	265.69	266.01	266.86	19
20	265.88	265.48	265.53	266.27	265.85	265.84	265.84	265.59	265.65	265.63	266.01	266.79	20
Min. -													
21	265.94	265.49	265.55	266.22	265.86	265.86 +	265.86	265.58 -	265.63	265.64	265.98	266.75	21
22	266.02	265.49	265.54	266.15	265.88	265.86 +	265.84	265.61	265.65	265.54	265.95	266.78	22
23	266.05	265.47	265.53	266.12	265.89	265.84	265.83	265.65	265.66	265.57	265.92	266.85	23
24	266.04	265.48	265.53	266.08	265.88	265.85	265.78	265.70	265.68	265.52	265.92	266.90 +	24
25	266.02	265.55	265.51	266.04	265.83	265.85	265.78	265.74	265.68	265.55	265.93	266.89	25
26	265.98	265.62	265.52	266.02	265.80	265.85	265.77	265.75	265.66	265.50 -	265.93	266.89	26
27	265.95	265.68	265.50	265.99	265.79	265.83	265.75 -	265.69	265.69	265.54	266.05	266.86	27
28	265.95	265.68	265.51	265.96	265.77	265.83	265.78	265.64	265.70	265.55	266.26	266.84	28
29	265.94	265.70	265.48	265.94	265.75	265.81	265.86	265.62	265.68	265.58	266.65	266.81	29
30	265.91		265.46 -	265.90	265.74	265.80	265.81	265.64	265.70	265.59	266.76 +	266.74	30
31	265.89		265.46 -		265.73 -		265.78	265.70		265.61		266.68	31
Monatsmittel	266.00	265.58	265.57 -	265.81	265.85	265.79	265.82	265.68	265.74	265.68	266.01	266.74 +	
Maximum	266.21	265.87	265.79 -	266.41	266.10	265.91	266.00	265.83	266.09	266.09	266.76	266.94 +	
Datum	06.01	01.02	02.03	18.04	04.05	13.06	07.07	01.08	02.09	11.10	30.11	19.12	
Amplitude	0.37	0.51	0.40	1.07	0.43	0.29	0.35	0.32	0.54	0.69	1.17	0.52	
Jahr 2012	Mittel	265.86 m ü.M.		Maximum	266.94 (19.Dez)		Minimum	265.34 (03.Apr)		Amplitude	1.60 m		



Periode	2001 - 2012												
Monatsmittel	265.40	265.33 -	265.52	265.68 +	265.65	265.56	265.43	265.48	265.44	265.45	265.42	265.49	
Maximum	266.26	266.02 -	266.61	267.23	266.73	266.24	266.15	267.80 +	266.71	266.57	266.76	266.94	
Jahr	2010	2009	2001	2006	2006	2006	2008	2007	2007	2006	2012	2012	
Minimum	264.05 -	264.35	264.69	264.68	264.72 +	264.45	264.23	264.15	264.06	264.08	264.05 -	264.17	
Jahr	2004	2006	2011	2003	2003	2003	2003	2003	2003	2003	2003	2003	
Amplitude	1.33	0.82	1.87	1.28	0.95	0.60 -	0.72	2.18 +	0.93	1.22	1.17	0.99	
Jahr	2004	2011	2001	2006	2002	2006	2002	2007	2002	2004	2012	2010	
Periode	Mittel	265.49 m ü.M.		Maximum	267.80 (09.Aug 2007)		Minimum	264.05 (26.Nov 2003)		Amplitude	3.75 m		

Darstellung der letzten 12 Jahre

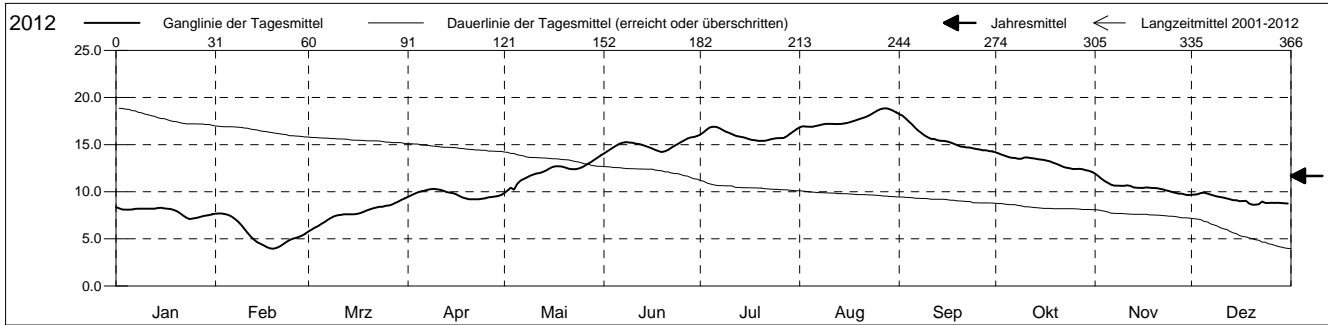


Grundwassertemperatur

Birstal
 Münchenstein 20.K.4 Hofmatt
 Abstichpunkt: 270.00 m ü.M.
 OK Terrain: 269.42 m ü.M.

Amt für Umweltschutz und Energie
Kanton Basel-Landschaft
 Koordinaten: 0.00 / 0.00

2012	Januar	Februar	März	April	Mai	Juni	Juli	August	September	Oktober	November	Dezember	
1	8.4 +	7.7 +	5.8 -	9.4	9.9 -	14.1 -	16.1	16.9 -	18.2 +	14.2 +	11.9 +	9.7	1
2	8.2	7.7 +	6.0	9.6	10.1	14.3	16.3	16.9 -	18.1	14.1	11.7	9.7	2
3	8.1	7.7 +	6.2	9.8	10.4	14.5	16.6	16.9 -	17.8	13.9	11.4	9.7	3
4	8.1	7.6	6.4	9.9	10.2	14.7	16.8	16.9 -	17.5	13.8	11.1	9.9 +	4
5	8.1	7.5	6.6	10.0	10.8	14.9	16.9 +	16.9 -	17.1	13.7	10.9	9.9 +	5
6	8.1	7.4	6.8	10.1	11.2	15.1	16.9 +	17.0	16.8	13.6	10.7	9.8	6
7	8.2	7.1	7.0	10.2	11.4	15.2	16.8	17.1	16.5	13.6	10.6	9.7	7
8	8.2	6.8	7.2	10.3 +	11.5	15.3	16.5	17.1	16.2	13.5	10.6	9.6	8
9	8.2	6.5	7.4	10.3 +	11.7	15.2	16.4	17.2	15.9	13.5	10.6	9.5	9
10	8.2	6.1	7.5	10.3 +	11.8	15.2	16.3	17.2	15.8	13.6	10.6	9.4	10
11	8.2	5.6	7.5	10.2	11.9	15.1	16.1	17.2	15.6	13.6	10.7	9.4	11
12	8.2	5.2	7.6	10.1	12.0	15.1	15.9	17.2	15.6	13.6	10.6	9.3	12
13	8.2	4.9	7.6	10.0	12.1	15.0	15.9	17.2	15.5	13.5	10.5	9.2	13
14	8.3	4.7	7.6	9.9	12.3	14.8	15.8	17.2	15.4	13.5	10.4	9.1	14
15	8.3	4.5	7.6	9.8	12.5	14.7	15.7	17.2	15.4	13.4	10.4	9.1	15
16	8.2	4.3	7.6	9.7	12.6	14.6	15.6	17.3	15.3	13.4	10.4	9.0	16
17	8.2	4.1	7.7	9.6	12.7	14.4	15.5	17.4	15.2	13.3	10.5	9.0	17
18	8.2	4.0 -	7.9	9.4	12.7	14.3	15.5	17.5	15.1	13.2	10.4	9.0	18
19	8.1	4.0 -	8.0	9.3	12.7	14.2	15.4 -	17.6	14.9	13.1	10.4	8.8	19
20	7.9	4.0 -	8.1	9.2 -	12.6	14.3	15.4 -	17.8	14.8	13.0	10.4	8.6 -	20
21	7.7	4.2	8.2	9.2 -	12.5	14.4	15.4 -	17.9	14.7	12.8	10.3	8.6 -	21
22	7.5	4.4	8.3	9.2 -	12.4	14.7	15.5	18.0	14.7	12.7	10.2	8.7	22
23	7.2	4.7	8.4	9.2 -	12.4	14.9	15.6	18.2	14.7	12.6	10.2	9.0	23
24	7.1 -	4.9	8.4	9.3	12.4	15.1	15.6	18.4	14.6	12.5	10.1	8.8	24
25	7.2	5.0	8.5	9.3	12.6	15.3	15.7	18.6	14.5	12.4	10.0	8.8	25
26	7.2	5.1	8.5	9.4	12.8	15.5	15.7	18.8	14.5	12.4	9.9	8.8	26
27	7.3	5.2	8.6	9.4	13.0	15.6	15.7	18.8	14.4	12.4	9.8	8.8	27
28	7.4	5.3	8.8	9.5	13.2	15.8	15.9	18.9 +	14.4	12.4	9.8	8.8	28
29	7.5	5.6	9.0	9.5	13.4	15.8	16.2	18.8	14.3 -	12.3	9.7	8.8	29
30	7.5		9.1	9.7	13.6	15.9 +	16.4	18.6	14.3 -	12.2	9.6 -	8.8	30
31	7.6		9.3 +		13.9 +		16.6	18.4		12.1 -		8.7	31
Monatsmittel	7.9	5.6 -	7.7	9.7	12.1	14.9	16.0	17.6 +	15.6	13.2	10.5	9.2	
Maximum	8.4	7.7 -	9.4	10.3	14.0	16.0	16.9	18.9 +	18.3	14.2	12.0	10.0	
Datum	01.01	01.02	31.03	08.04	31.05	30.06	04.07	27.08	01.09	01.10	01.11	04.12	
Minimum	7.1	3.9 -	5.7	9.2	9.8	14.0	15.3	16.7 +	14.2	12.0	9.6	8.3	
Datum	24.01	18.02	01.03	19.04	01.05	01.06	21.07	01.08	30.09	31.10	30.11	20.12	
Amplitude	1.3	3.8	3.7	1.1	4.2	2.0	1.6	2.2	4.1	2.2	2.4	1.7	
Jahr 2012	Mittel	11.7 °C		Maximum	18.9 (27.Aug)		Minimum	3.9 (18.Feb)		Amplitude	15.0 °C		



Periode	2001 - 2012												
Monatsmittel	7.0	6.3 -	7.6	9.9	12.9	15.0	16.5	16.7 +	15.4	13.1	10.2	8.2	
Maximum	9.2	8.3 -	9.4	13.4	16.8	17.1	18.7	19.3 +	19.1	16.0	12.9	10.4	
Jahr	2007	2007	2012	2007	2011	2009	2010	2011	2011	2009	2006	2006	
Minimum	4.0	3.9 -	5.7	7.3	9.5	12.5	13.7 +	13.1	12.8	10.1	7.1	5.4	
Jahr	2009	2012	2012	2008	2008	2010	2007	2007	2008	2010	2007	2007	
Amplitude	2.7 -	3.8	3.7	4.9 +	4.5	3.1	4.9 +	4.0	4.2	4.8	3.2	3.0	
Jahr	2009	2012	2012	2007	2009	2008	2010	2011	2011	2009	2011	2007	
Periode	Mittel	11.6 °C		Maximum	19.3 (30.Aug 2011)		Minimum	3.9 (18.Feb 2012)		Amplitude	15.4 °C		

Darstellung der letzten 12 Jahre

