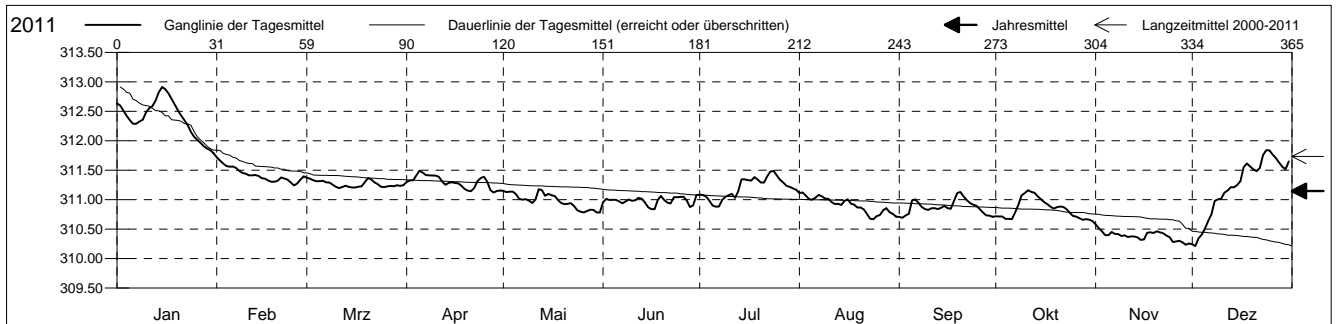


Grundwasserstände

Ergolzthal
Liestal 39.R.10 Sportplatz Gitterli
Abstichpunkt: 322.12 m ü.M.
OK Terrain: 322.36 m ü.M.

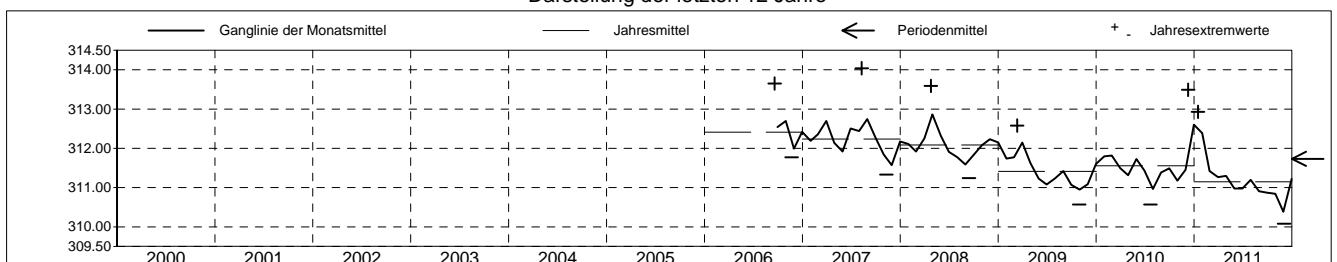
Amt für Umweltschutz und Energie
Kanton Basel-Landschaft
Koordinaten: 0.00 / 0.00

2011	Januar	Februar	März	April	Mai	Juni	Juli	August	September	Oktober	November	Dezember	
1	312.64	311.72 +	311.37 +	311.30	311.15	310.96	311.08	311.11	310.70	310.72	310.58 +	310.24	1
2	312.60	311.67	311.35	311.33	311.13	311.01	311.08	311.12 +	310.69 -	310.71	310.51	310.21 -	2
3	312.51	311.61	311.33	311.33	311.14	310.99	311.05	311.07	310.73	310.71	310.46	310.34	3
4	312.42	311.57	311.31	311.41	311.14	311.00	310.98	311.01	310.76	310.67	310.40	310.41	4
5	312.35	311.56	311.32	311.49 +	311.09	311.00	310.90	311.00	310.99	310.67	310.40	310.51	5
6	312.29	311.56	311.32	311.46	311.01	310.97	310.88 -	311.04	311.00	310.67	310.45	310.64	6
7	312.29	311.54	311.29	311.42	311.00	310.94	310.88 -	311.08	310.94	310.78	310.42	310.75	7
8	312.33	311.49	311.29	311.41	311.01	310.97	311.00	311.05	310.88	310.91	310.42	310.98	8
9	312.36	311.45	311.26	311.41	310.98	311.00	311.05	311.02	310.84	311.07	310.38	311.01	9
10	312.48	311.44	311.22	311.41	310.94	310.98	311.08	311.01	310.83	311.11	310.39	311.01	10
11	312.55	311.41	311.19 -	311.39	311.00	310.99	311.10	310.96	310.85	311.16 +	310.37	311.12	11
12	312.59	311.41	311.21	311.31	311.18 +	311.03	311.03	310.93	310.86	311.13	310.38	311.15	12
13	312.68	311.42	311.24	311.25	311.16	311.02	311.14	310.93	310.84	311.12	310.37	311.21	13
14	312.82	311.40	311.22	311.28	311.07	310.95	311.34	310.91	310.86	311.06	310.36	311.21	14
15	312.91 +	311.36	311.21	311.30	311.10	310.87	311.35	310.98	310.89	311.01	310.32	311.25	15
16	312.88	311.36	311.21	311.28	311.07	310.84 -	311.33	311.01	310.85	310.96	310.32	311.32	16
17	312.81	311.32	311.22	311.28	311.06	310.84 -	311.32	310.93	310.85	310.92	310.44	311.55	17
18	312.71	311.30	311.23	311.24	310.99	310.99	311.38	310.92	310.98	310.88	310.45	311.61	18
19	312.61	311.30	311.30	311.18	310.94	311.06	311.34	310.87	311.11	310.85	310.43	311.57	19
20	312.51	311.32	311.37 +	311.15	310.92	310.99	311.29	310.87	311.13 +	310.87	310.46	311.52	20
21	312.42	311.38	311.34	311.14	310.93	310.95	311.29	310.83	311.05	310.88	310.45	311.48	21
22	312.34	311.36	311.29	311.20	310.94	310.93	311.40	310.75	310.99	310.88	310.43	311.54	22
23	312.26	311.34	311.26	311.32	310.89	311.04	311.48	310.67 -	310.94	310.84	310.39	311.75	23
24	312.15	311.29	311.22	311.37	310.82	311.04	311.49 +	310.67 -	310.91	310.77	310.36	311.84 +	24
25	312.06	311.24 -	311.21	311.39	310.80	311.05	311.41	310.72	310.90	310.72	310.28	311.84 +	25
26	312.01	311.27	311.22	311.31	310.78 -	311.05	311.34	310.74	310.84	310.71	310.29	311.77	26
27	311.97	311.34	311.23	311.16	310.81	310.99	311.29	310.82	310.78	310.68	310.30	311.71	27
28	311.91	311.39	311.23	311.12 -	310.83	310.88	311.23	310.86	310.73	310.66	310.27	311.63	28
29	311.87		311.24	311.15	310.83	310.90	311.22	310.79	310.73	310.67	310.23 -	311.56	29
30	311.84		311.23	311.16	310.78 -	311.08 +	311.19	310.76	310.71	310.66	310.26	311.52	30
31	311.79 -		311.25		310.78 -		311.17	310.71		310.64 -		311.65	31
Monatsmittel	312.39 +	311.42	311.26	311.30	310.98	310.98	311.20	310.91	310.87	310.84	310.39 -	311.22	
Maximum	312.93 +	311.77	311.44	311.56	311.24	311.20	311.54	311.18	311.20	311.23	310.70 -	311.90	
Datum	15.01	01.02	01.03	05.04	13.05	30.06	23.07	01.08	20.09	10.10	01.11	24.12	
Amplitude	1.24	0.64	0.36	0.55	0.63	0.52	0.79	0.65	0.66	0.72	0.59	1.82	
Jahr 2011	Mittel	311.15 m ü.M.		Maximum	312.93 (15.Jan)		Minimum	310.08 (02.Dez)		Amplitude	2.85 m		



Periode	2000 - 2011												
Monatsmittel	312.04 +	311.86	311.97	311.85	311.63	311.58	311.52	311.61	311.68	311.60	311.45 -	312.03	
Maximum	312.93	312.72 -	313.27	313.59	312.97	313.16	312.79	314.04 +	313.65	313.60	313.16	313.49	
Jahr	2011	2007	2007	2008	2008	2007	2007	2007	2006	2006	2008	2010	
Minimum	311.27 +	311.13	311.08	310.90	310.61	310.68	310.57	310.53	310.54	310.51	310.11	310.08 -	
Jahr	2009	2011	2011	2010	2011	2011	2010	2011	2011	2011	2011	2011	
Amplitude	1.40	0.81 -	1.05	1.34	1.39	1.17	1.37	2.16	1.85	1.88	1.48	2.20 +	
Jahr	2010	2009	2007	2008	2010	2007	2009	2007	2006	2008	2008	2010	
Periode	Mittel	311.73 m ü.M.		Maximum	314.04 (09.Aug 2007)		Minimum	310.08 (02.Dez 2011)		Amplitude	3.96 m		

Darstellung der letzten 12 Jahre



Grundwassertemperatur

Ergolzthal

Liestal

Abstichpunkt:

OK Terrain:

39.R.10

322.12

322.36

Sportplatz Gitterli

m ü.M.

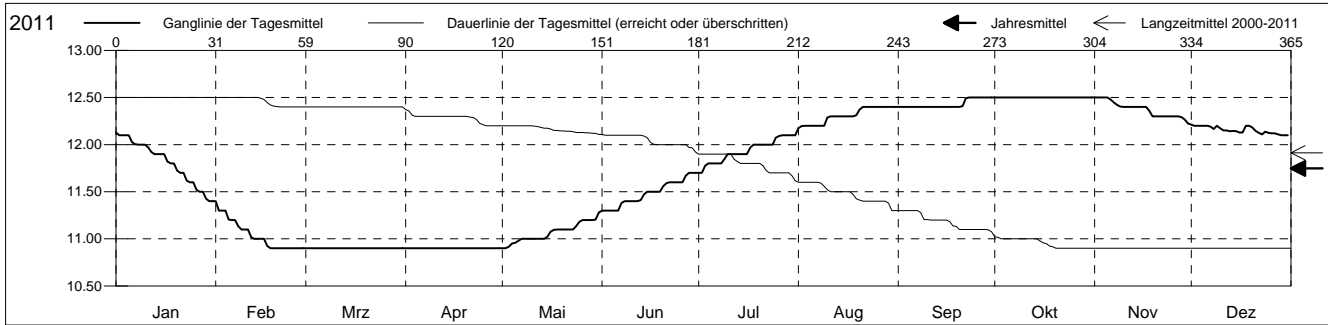
m ü.M.

Amt für Umweltschutz und Energie

Kanton Basel-Landschaft

Koordinaten: 0.00 / 0.00

2011	Januar	Februar	März	April	Mai	Juni	Juli	August	September	Oktober	November	Dezember	
1	12.1 +	11.4 +	10.9 +	10.9 +	10.9 -	11.3 -	11.7 -	12.2 -	12.4 -	12.5 +	12.5 +	12.2 +	1
2	12.1 +	11.3	10.9 +	10.9 +	10.9 -	11.3 -	11.7 -	12.2 -	12.4 -	12.5 +	12.5 +	12.2 +	2
3	12.1 +	11.3	10.9 +	10.9 +	10.9 -	11.3 -	11.8	12.2 -	12.4 -	12.5 +	12.5 +	12.2 +	3
4	12.1 +	11.3	10.9 +	10.9 +	10.9 -	11.3 -	11.8	12.2 -	12.4 -	12.5 +	12.5 +	12.2 +	4
5	12.1 +	11.2	10.9 +	10.9 +	11.0	11.3 -	11.8	12.2 -	12.4 -	12.5 +	12.5 +	12.2 +	5
Tagesmittel													
6	12.0	11.2	10.9 +	10.9 +	11.0	11.3 -	11.8	12.2 -	12.4 -	12.5 +	12.5 +	12.2 +	6
7	12.0	11.2	10.9 +	10.9 +	11.0	11.4	11.8	12.2 -	12.4 -	12.5 +	12.4	12.2 +	7
8	12.0	11.1	10.9 +	10.9 +	11.0	11.4	11.8	12.2 -	12.4 -	12.5 +	12.4	12.2 +	8
9	12.0	11.1	10.9 +	10.9 +	11.0	11.4	11.8	12.2 -	12.4 -	12.5 +	12.4	12.2 +	9
10	12.0	11.1	10.9 +	10.9 +	11.0	11.4	11.9	12.3	12.4 -	12.5 +	12.4	12.2 +	10
11	12.0	11.1	10.9 +	10.9 +	11.0	11.4	11.9	12.3	12.4 -	12.5 +	12.4	12.1 -	11
12	11.9	11.0	10.9 +	10.9 +	11.0	11.4	11.9	12.3	12.4 -	12.5 +	12.4	12.1 -	12
13	11.9	11.0	10.9 +	10.9 +	11.0	11.4	11.9	12.3	12.4 -	12.5 +	12.4	12.1 -	13
14	11.9	11.0	10.9 +	10.9 +	11.0	11.5	11.9	12.3	12.4 -	12.5 +	12.4	12.1 -	14
15	11.9	11.0	10.9 +	10.9 +	11.0	11.5	11.9	12.3	12.4 -	12.5 +	12.4	12.1 -	15
Max. +													
16	11.9	11.0	10.9 +	10.9 +	11.1	11.5	11.9	12.3	12.4 -	12.5 +	12.4	12.1 -	16
17	11.8	10.9 -	10.9 +	10.9 +	11.1	11.5	12.0	12.3	12.4 -	12.5 +	12.4	12.1 -	17
18	11.8	10.9 -	10.9 +	10.9 +	11.1	11.5	12.0	12.3	12.4 -	12.5 +	12.4	12.2 +	18
19	11.8	10.9 -	10.9 +	10.9 +	11.1	11.5	12.0	12.3	12.4 -	12.5 +	12.3	12.2 +	19
20	11.7	10.9 -	10.9 +	10.9 +	11.1	11.6	12.0	12.4 +	12.4 -	12.5 +	12.3	12.2 +	20
Min. -													
21	11.7	10.9 -	10.9 +	10.9 +	11.1	11.6	12.0	12.4 +	12.4 -	12.5 +	12.3	12.1 -	21
22	11.7	10.9 -	10.9 +	10.9 +	11.1	11.6	12.0	12.4 +	12.5 +	12.5 +	12.3	12.1 -	22
23	11.6	10.9 -	10.9 +	10.9 +	11.1	11.6	12.0	12.4 +	12.5 +	12.5 +	12.3	12.1 -	23
24	11.6	10.9 -	10.9 +	10.9 +	11.1	11.6	12.0	12.4 +	12.5 +	12.5 +	12.3	12.1 -	24
25	11.6	10.9 -	10.9 +	10.9 +	11.2	11.6	12.1 +	12.4 +	12.5 +	12.5 +	12.3	12.1 -	25
26	11.5	10.9 -	10.9 +	10.9 +	11.2	11.6	12.1 +	12.4 +	12.5 +	12.5 +	12.3	12.1 -	26
27	11.5	10.9 -	10.9 +	10.9 +	11.2	11.7 +	12.1 +	12.4 +	12.5 +	12.5 +	12.3	12.1 -	27
28	11.5	10.9 -	10.9 +	10.9 +	11.2	11.7 +	12.1 +	12.4 +	12.5 +	12.5 +	12.3	12.1 -	28
29	11.4 -		10.9 +	10.9 +	11.2	11.7 +	12.1 +	12.4 +	12.5 +	12.5 +	12.3	12.1 -	29
30	11.4 -		10.9 +	10.9 +	11.2	11.7 +	12.1 +	12.4 +	12.5 +	12.5 +	12.2 -	12.1 -	30
31	11.4 -		10.9 +		11.3 +		12.1 +	12.4 +		12.5 +		12.1 -	31
Monatsmittel	11.8	11.0	10.9 -	10.9 -	11.1	11.5	11.9	12.3	12.4	12.5 +	12.4	12.2	
Maximum	12.2	11.4	10.9 -	10.9 -	11.3	11.7	12.1	12.4	12.5 +	12.5 +	12.5 +	12.3	
Datum	01.01	01.02	01.03	01.04	30.05	27.06	25.07	19.08	21.09	01.10	01.11	01.12	
Minimum	11.4	10.9 -	10.9 -	10.9 -	10.9 -	11.3	11.7	12.1	12.4	12.5 +	12.2	12.1	
Datum	29.01	17.02	01.03	01.04	01.05	01.06	01.07	01.08	01.09	01.10	28.11	07.12	
Amplitude	0.8	0.5	0.0 +	0.0 +	0.4	0.4	0.4	0.3	0.1	0.0 +	0.3	0.2	
Jahr 2011	Mittel	11.7 °C		Maximum	12.5 (21.Sep)		Minimum	10.9 (17.Feb)		Amplitude	1.6 °C		



Periode	2000 - 2011												
Monatsmittel	11.7	11.1	10.8	10.7 -	10.8	11.3	12.0	12.6	13.0	13.1 +	12.8	12.4	
Maximum	12.3	11.8	12.3	11.3 -	11.3 -	12.1	12.7	13.7	14.2	14.3 +	14.0	14.0	
Jahr	2007	2010	2007	2008	2007	2007	2007	2007	2006	2006	2008	2010	
Minimum	10.9	10.1	9.9 -	9.9 -	10.0	10.3	11.4	12.1	12.3	12.5 +	12.2	11.8	
Jahr	2008	2008	2008	2008	2008	2008	2008	2009	2010	2009	2011	2007	
Amplitude	1.0	0.8	1.5	1.4	0.7 -	1.1	1.3	1.5	1.8 +	1.0	1.3	1.8 +	
Jahr	2009	2008	2007	2008	2009	2008	2008	2007	2006	2006	2008	2010	
Periode	Mittel	11.9 °C		Maximum	14.3 (03.Okt 2006)		Minimum	9.9 (30.Mrz 2008)		Amplitude	4.4 °C		

Darstellung der letzten 12 Jahre

