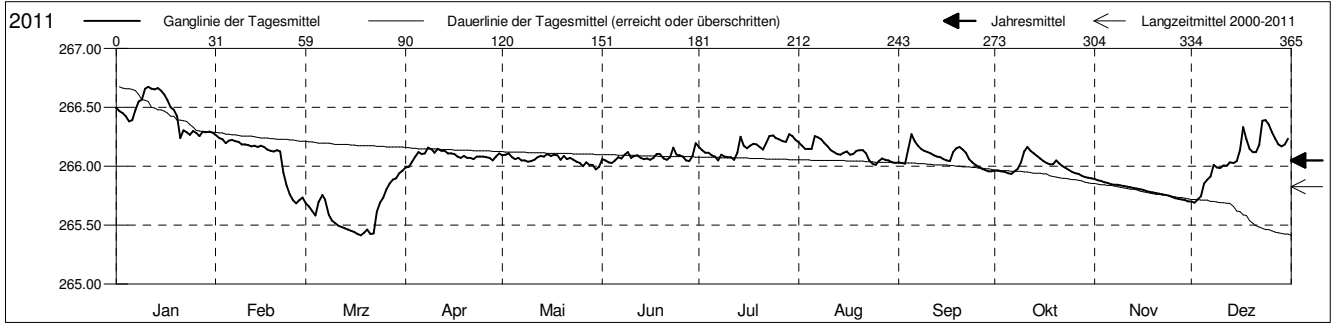


Grundwasserstände

Birstal
 Münchenstein 20.K.60 SBB-Birsbrücke
 Abstichpunkt: 271.91 m ü.M.
 OK Terrain: 271.51 m ü.M.

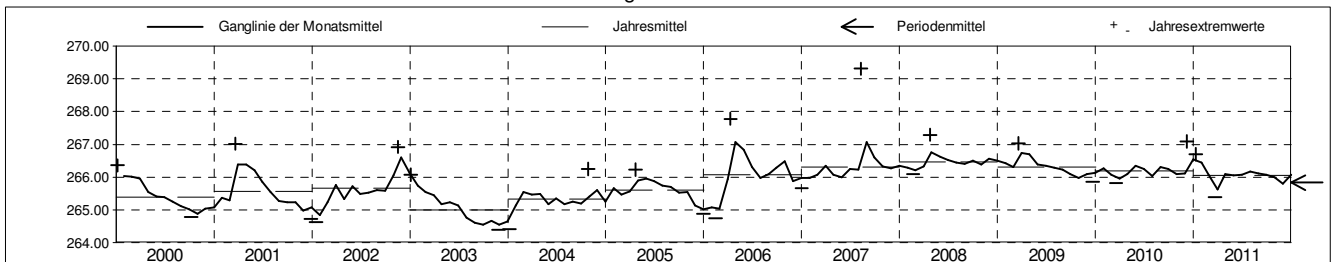
Amt für Umweltschutz und Energie
Kanton Basel-Landschaft
 Koordinaten: 613521.19 / 263022.47

2011	Januar	Februar	März	April	Mai	Juni	Juli	August	September	Oktober	November	Dezember	
1	266.49	266.27 +	265.69	265.99 -	266.09	266.06	266.16	266.20	266.03	265.96	265.89 +	265.70	1
2	266.47	266.24	265.66	265.99 -	266.10	266.05	266.14	266.17	266.03	265.96	265.88	265.69 -	2
3	266.45	266.23	265.62	266.04	266.11 +	266.03 -	266.11	266.15	266.02	265.96	265.87	265.72	3
4	266.42	266.20	265.58	266.08	266.08	266.03 -	266.11	266.15	266.15	265.95	265.87	265.75	4
5	266.38	266.22	265.69	266.12	266.06	266.05	266.09	266.14	266.27 +	265.94	265.86	265.85	5
Tagesmittel													
6	266.39	266.22	265.76	266.10	266.07	266.08	266.08	266.26 +	266.21	265.94	265.85	265.89	6
7	266.48	266.21	265.72	266.11	266.05	266.07	266.05 -	266.24	266.17	265.96	265.84	265.92	7
8	266.55	266.21	265.59	266.16 +	266.05	266.10	266.10	266.23	266.15	265.98	265.84	266.01	8
9	266.57	266.19	265.54	266.14	266.04	266.12	266.08	266.20	266.13	266.04	265.84	265.99	9
10	266.66	266.19	265.52	266.11	266.04	266.07	266.08	266.17	266.12	266.12	265.83	265.98	10
11	266.68 +	266.18	265.50	266.15	266.05	266.09	266.08	266.14	266.11	266.16 +	265.83	266.01	11
12	266.66	266.17	265.49	266.13	266.07	266.09	266.05 -	266.12	266.09	266.13	265.82	266.01	12
13	266.65	266.17	265.47	266.13	266.09	266.07	266.11	266.10	266.08	266.11	265.82	266.03	13
14	266.66	266.16	265.46	266.11	266.08	266.06	266.25	266.10	266.08	266.09	265.81	266.03	14
15	266.64	266.17	265.45	266.11	266.10	266.07	266.17	266.12	266.06	266.07	265.80	266.05	15
Max. +													
16	266.61	266.16	265.44	266.10	266.09	266.05	266.15	266.13	266.05	266.04	265.80	266.13	16
17	266.56	266.14	265.43	266.08	266.10	266.07	266.17	266.10	266.05	266.03	265.79	266.33	17
18	266.50	266.13	265.42 -	266.07	266.09	266.11	266.19	266.11	266.12	266.02	265.78	266.23	18
19	266.48	266.13	265.43	266.09	266.05	266.10	266.18	266.13	266.15	266.02	265.78	266.15	19
20	266.43	266.13	265.46	266.07	266.09	266.06	266.16	266.14	266.16	266.05	265.77	266.12	20
Min. -													
21	266.24 -	266.12	265.42 -	266.07	266.06	266.06	266.14	266.14	266.14	266.02	265.77	266.12	21
22	266.30	265.94	265.43	266.06	266.07	266.08	266.20	266.11	266.11	266.00	265.76	266.18	22
23	266.29	265.84	265.61	266.08	266.05	266.16	266.25	266.05	266.06	265.98	265.76	266.38	23
24	266.27	265.76	265.69	266.08	266.04	266.10	266.26	266.02	266.03	265.97	265.75	266.39 +	24
25	266.30	265.71	265.74	266.08	266.03	266.09	266.24	266.01 -	266.01	265.95	265.74	266.36	25
26	266.28	265.68 -	265.80	266.07	266.00	266.08	266.23	266.05	265.99	265.94	265.73	266.29	26
27	266.26	265.71	265.85	266.07	266.03	266.05	266.21	266.06	265.98	265.93	265.72	266.24	27
28	266.29	265.73	265.89	266.05	266.01	266.04	266.21	266.06	265.92	265.92	265.72	266.18	28
29	266.29		265.90	266.08	266.01	266.09	266.27 +	266.05	265.96 -	265.91	265.71	266.17	29
30	266.29		265.94	266.11	265.97 -	266.20 +	266.26	266.04	265.96 -	265.90 -	265.70 -	266.19	30
31	266.28		265.96 +		265.99		266.22	266.03		265.90 -		266.24	31
Monatsmittel	266.45 +	266.08	265.62 -	266.09	266.06	266.08	266.16	266.12	266.08	266.00	265.80	266.07	
Maximum	266.70 +	266.29	265.99	266.18	266.15	266.22	266.29	266.30	266.30	266.19	265.89 -	266.40	
Datum	10.01	01.02	31.03	09.04	03.05	30.06	24.07	06.08	05.09	10.10	01.11	23.12	
Amplitude	0.52	0.61	0.60	0.25	0.22	0.25	0.28	0.33	0.35	0.29	0.19	0.71	
Jahr 2011	Mittel	266.05 m ü.M.		Maximum	266.70 (10.Jan)		Minimum	265.40 (22.Mrz)		Amplitude	1.30 m		



Periode	2000 - 2011												
Monatsmittel	265.77	265.74	265.96	266.05 +	265.99	265.90	265.76	265.81	265.74	265.76	265.72 -	265.73	
Maximum	266.75	266.56 -	267.03	267.78	267.15	266.66	266.71	269.31 +	267.27	266.99	266.92	267.10	
Jahr	2010	2009	2009	2006	2006	2006	2008	2007	2008	2006	2002	2010	
Minimum	264.42	264.75	265.09	265.09	265.10 +	264.93	264.62	264.54	264.42	264.42	264.38 -	264.52	
Jahr	2004	2006	2001	2003	2003	2003	2003	2003	2003	2003	2003	2003	
Amplitude	1.28	0.65	1.93	1.50	0.93	0.62 -	0.64	3.25 +	1.18	1.21	0.96	1.15	
Jahr	2004	2002	2001	2006	2002	2007	2002	2007	2006	2004	2004	2010	
Periode	Mittel	265.83 m ü.M.		Maximum	269.31 (09.Aug 2007)		Minimum	264.38 (27.Nov 2003)		Amplitude	4.93 m		

Darstellung der letzten 12 Jahre

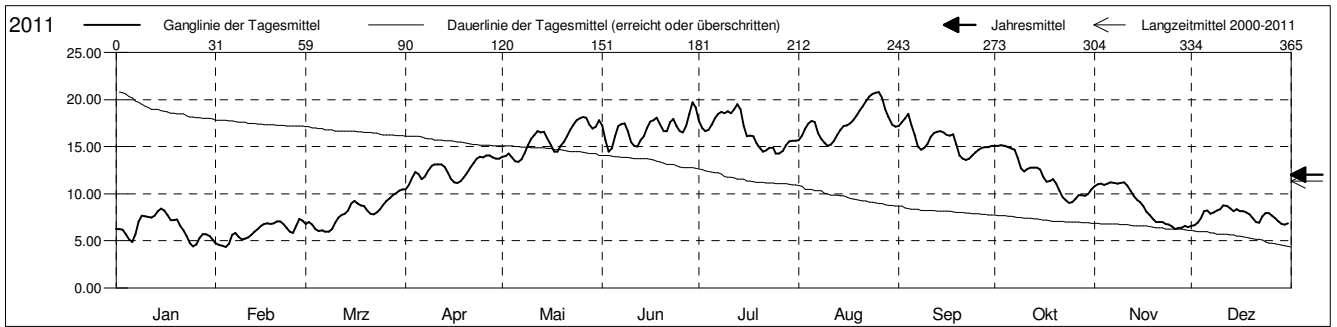


Grundwassertemperatur

Birstal
 Münchenstein 20.K.60 SBB-Birsbrücke
 Abstichpunkt: 271.91 m ü.M.
 OK Terrain: 271.51 m ü.M.

Amt für Umweltschutz und Energie
Kanton Basel-Landschaft
 Koordinaten: 613521.19 / 263022.47

2011	Januar	Februar	März	April	Mai	Juni	Juli	August	September	Oktober	November	Dezember	
1	6.3	4.8	6.8	10.5 -	13.9	17.3	17.8	15.7	17.2	15.1 +	10.8	6.6 -	1
2	6.3	4.6	7.0	11.0	14.0	15.7	17.0	16.1	17.6	15.1 +	11.0	6.7	2
3	6.2	4.5	6.7	11.7	14.3	14.5 -	16.6	16.9	18.0	15.1 +	11.0	6.9	3
4	5.7	4.4 -	6.2	12.3	13.9	14.8	16.8	17.4	18.5 +	15.1 +	11.0	7.4	4
5	5.2	4.7	6.0 -	12.1	13.5	16.1	17.3	17.8	17.2	15.0	11.1	8.1	5
6	4.9	5.6	6.1	11.6	13.4 -	17.2	18.0	17.6	16.2	14.8	11.2 +	8.2	6
7	5.7	5.8	6.0 -	11.8	13.7	17.4	18.5	16.5	15.0	14.6	11.1	7.9	7
8	7.1	5.5	6.0 -	12.5	14.3	17.5	18.7	15.8	14.7	13.8	11.1	8.0	8
9	7.7	5.2	6.2	13.0	15.1	16.7	18.6	15.4	14.9	12.7	11.2 +	8.2	9
10	7.6	5.3	6.9	13.1	15.8	15.5	18.8	15.1 -	15.3	12.3	11.2 +	8.4	10
11	7.5	5.4	7.5	13.1	16.2	15.1	18.6	15.2	16.0	12.7	10.9	8.7 +	11
12	7.5	5.6	7.8	13.1	16.7	15.0	18.9	15.6	16.4	12.8	10.3	8.7 +	12
13	7.7	6.0	7.9	12.8	16.5	15.7	19.5 +	16.2	16.6	12.8	9.8	8.5	13
14	8.1	6.3	8.2	12.3	16.5	16.1	18.9	16.8	16.7	12.8	9.4	8.1	14
15	8.4 +	6.6	9.0	11.5	15.9	17.0	17.2	17.2	16.5	12.6	9.1	8.3	15
16	8.2	6.8	9.2	11.2	15.1	17.7	16.1	17.3	16.3	11.8	8.7	8.2	16
17	7.7	6.9	9.0	11.1	14.5	17.8	16.2	17.5	16.2	11.3	8.1	8.2	17
18	7.2	6.8	8.8	11.3	14.5	18.1	16.1	17.8	16.3	11.4	7.7	8.0	18
19	7.2	6.9	8.7	11.8	15.1	17.4	15.4	18.3	15.2	11.6	7.3	7.8	19
20	7.2	7.1	8.2	12.2	15.5	16.6	14.9	18.8	14.1	11.1	7.0	7.4	20
21	6.6	7.1	7.9	12.8	16.1	16.6	14.5	19.3	13.7	10.3	7.0	7.0	21
22	6.1	6.8	7.8	13.3	16.8	17.6	14.6	19.8	13.6 -	9.7	7.0	7.0	22
23	5.5	6.4	8.0	13.7	17.3	17.9	14.9	20.3	13.8	9.3	6.8	7.6	23
24	4.8	6.0	8.4	13.9	17.8	17.2	14.9	20.6	14.1	9.1 -	6.8	7.9	24
25	4.4 -	5.9	8.9	13.9	18.0	16.7	14.3 -	20.8 +	14.4	9.1 -	6.5	8.0	25
26	4.7	6.6	9.3	14.0	18.2 +	16.5	14.3 -	20.8 +	14.7	9.5	6.3 -	7.7	26
27	5.3	7.3 +	9.5	14.1 +	18.1	17.2	14.6	20.2	14.9	9.9	6.4	7.4	27
28	5.7	7.1	9.8	13.8	17.3	18.5	15.1	19.0	14.9	9.9	6.4	7.1	28
29	5.7		10.0	13.7	17.0	19.7 +	15.6	18.1	15.0	9.8	6.6	6.8	29
30	5.5		10.3	13.7	17.1	19.2	15.6	17.3	15.1	10.0	6.5	6.7	30
31	5.1		10.5 +		17.8		15.6	17.1		10.4		6.8	31
Monatsmittel	6.4	6.0 -	8.0	12.6	15.8	16.9	16.6	17.7 +	15.6	12.0	8.8	7.7	
Maximum	8.5	7.4 -	10.5	14.2	18.3	20.3	19.8	21.0 +	18.8	15.3	11.3	8.8	
Datum	15.01	27.02	30.03	26.04	26.05	29.06	13.07	25.08	04.09	01.10	06.11	11.12	
Minimum	4.3 -	4.3 -	5.8	10.4	13.1	14.3	14.1	14.8 +	13.5	8.9	6.2	6.5	
Datum	25.01	04.02	07.03	01.04	05.05	03.06	25.07	10.08	22.09	24.10	26.11	01.12	
Amplitude	4.2	3.1	4.7	3.8	5.2	6.0	5.7	6.2	5.3	6.4	5.1	2.3	
Jahr 2011	Mittel	12.0 °C		Maximum	21.0 (25.Aug)		Minimum	4.3 (25.Jan)		Amplitude		16.7 °C	



Periode	2000 - 2011												
Monatsmittel	6.0 -	6.0 -	7.7	10.4	13.4	15.1	17.1 +	16.4	14.6	11.9	8.9	6.7	
Maximum	9.6	8.3 -	11.9	15.1	18.5	20.3	20.5	21.0 +	18.8	15.3	12.4	9.8	
Jahr	2007	2007	2006	2007	2009	2011	2006	2011	2011	2009	2006	2006	
Minimum	2.1 -	3.8	4.0	7.5	9.9	10.5	12.8	13.1 +	11.5	8.4	4.5	3.1	
Jahr	2009	2010	2010	2006	2010	2006	2007	2007	2008	2010	2007	2010	
Amplitude	5.2	4.1 -	7.2 +	6.6	7.1	6.0	6.4	6.2	6.0	6.4	6.2	5.7	
Jahr	2007	2008	2006	2007	2009	2011	2009	2011	2008	2009	2010	2009	
Periode	Mittel	11.3 °C		Maximum	21.0 (25.Aug 2011)		Minimum	2.1 (17.Jan 2009)		Amplitude		18.9 °C	

Darstellung der letzten 12 Jahre

