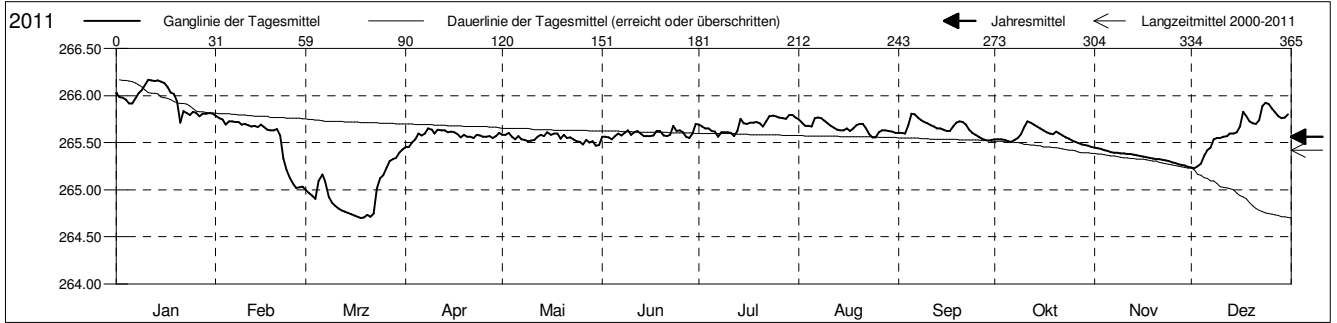


Grundwasserstände

Birstal
 Münchenstein 20.K.4 Hofmatt
 Abstichpunkt: 270.00 m ü.M.
 OK Terrain: 269.42 m ü.M.

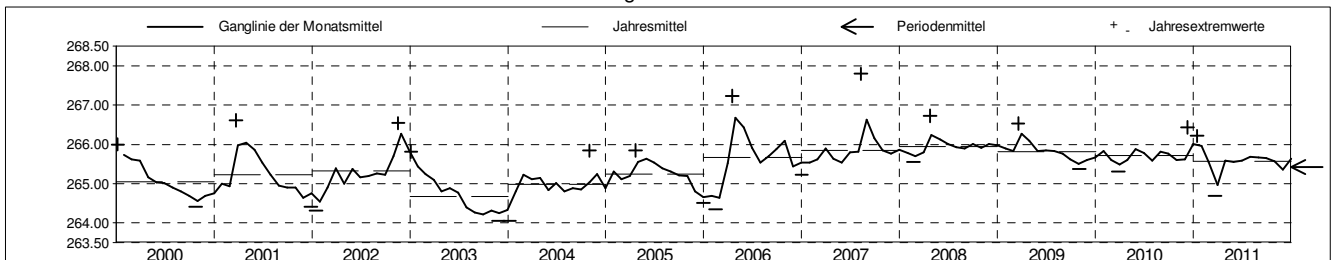
Amt für Umweltschutz und Energie
Kanton Basel-Landschaft
 Koordinaten: 613490.56 / 263079.84

2011	Januar	Februar	März	April	Mai	Juni	Juli	August	September	Oktober	November	Dezember	
1	266.02	265.79 +	265.00	265.45 -	265.58	265.56	265.69	265.75	265.60	265.53	265.45 +	265.24	1
2	265.98	265.76	264.97	265.45 -	265.58	265.57	265.67	265.71	265.60	265.53	265.44	265.23 -	2
3	265.98	265.75	264.94	265.51	265.60	265.56	265.65	265.68	265.59	265.53	265.43	265.25	3
4	265.96	265.69	264.90	265.54	265.56	265.54 -	265.65	265.68	265.69	265.53	265.42	265.27	4
5	265.91	265.73	265.10	265.60	265.54	265.57	265.63	265.67	265.81 +	265.52	265.41	265.36	5
Tagesmittel													
6	265.92	265.72	265.16	265.58	265.57	265.60	265.61	265.76	265.80	265.51	265.40	265.42	6
7	265.97	265.72	265.10	265.60	265.53	265.57	265.56 -	265.77 +	265.77	265.53	265.39	265.45	7
8	266.02	265.72	264.93	265.65 +	265.53	265.60	265.61	265.76	265.74	265.55	265.39	265.54	8
9	266.06	265.69	264.86	265.64	265.51	265.63	265.61	265.73	265.72	265.59	265.39	265.55	9
10	266.11	265.70	264.83	265.60	265.52	265.58	265.61	265.71	265.70	265.67	265.38	265.55	10
11	266.17 +	265.69	264.80	265.64	265.53	265.61	265.60	265.68	265.69	265.72 +	265.38	265.57	11
12	266.16	265.67	264.78	265.63	265.56	265.62	265.57	265.66	265.67	265.71	265.38	265.57	12
13	266.16	265.68	264.77	265.63	265.58	265.60	265.62	265.66	265.65	265.69	265.37	265.60	13
14	266.16	265.66	264.75	265.61	265.57	265.57	265.75	265.63	265.65	265.67	265.36	265.60	14
15	266.15	265.69	264.74	265.62	265.61 +	265.57	265.70	265.63	265.64	265.65	265.36	265.61	15
Max. +													
16	266.13	265.67	264.73	265.61	265.58	265.57	265.70	265.65	265.63	265.63	265.35	265.67	16
17	266.10	265.64	264.71	265.59	265.59	265.58	265.72	265.62	265.62	265.61	265.35	265.83	17
18	266.03	265.63	264.70 -	265.56	265.60	265.63	265.72	265.65	265.67	265.60	265.34	265.78	18
19	266.02	265.63	264.71	265.58	265.54	265.62	265.72	265.69	265.71	265.59	265.33	265.73	19
20	265.94	265.64	264.73	265.56	265.58	265.58	265.70	265.70	265.73	265.62	265.33	265.70	20
Min. -													
21	265.71 -	265.58	264.71	265.56	265.55	265.57	265.67	265.70	265.72	265.60	265.32	265.70	21
22	265.83	265.33	264.75	265.55	265.56	265.58	265.73	265.65	265.69	265.58	265.32	265.74	22
23	265.82	265.21	265.01	265.58	265.53	265.68	265.78	265.59	265.64	265.56	265.31	265.89	23
24	265.79	265.13	265.12	265.58	265.51	265.63	265.79 +	265.56	265.61	265.54	265.30	265.92 +	24
25	265.82	265.07	265.16	265.57	265.51	265.63	265.78	265.55 -	265.58	265.52	265.29	265.91	25
26	265.81	265.02 -	265.23	265.57	265.48	265.61	265.77	265.61	265.56	265.51	265.28	265.86	26
27	265.78	265.02 -	265.31	265.57	265.53	265.57	265.76	265.63	265.55	265.50	265.27	265.82	27
28	265.81	265.03	265.33	265.55	265.50	265.55	265.75	265.63	265.53	265.48	265.26	265.78	28
29	265.80		265.34	265.57	265.51	265.60	265.79 +	265.62	265.52 -	265.47	265.26	265.76	29
30	265.81		265.39	265.61	265.46 -	265.70 +	265.79 +	265.61	265.53	265.46 -	265.25 -	265.77	30
31	265.81		265.42 +		265.48		265.76	265.61		265.46 -		265.80	31
Monatsmittel	265.96 +	265.55	264.97 -	265.58	265.55	265.59	265.69	265.66	265.65	265.57	265.35	265.63	
Maximum	266.21 +	265.83	265.46	265.70	265.67	265.76	265.84	265.82	265.83	265.73	265.45 -	265.93	
Datum	14.01	01.02	31.03	11.04	02.05	30.06	30.07	06.08	05.09	11.10	01.11	24.12	
Amplitude	0.59	0.82	0.78	0.34	0.27	0.28	0.34	0.34	0.31	0.27	0.21	0.70	
Jahr 2011	Mittel	265.56 m ü.M.		Maximum	266.21 (14.Jan)		Minimum	264.69 (22.Mrz)		Amplitude	1.53 m		



Periode	2000 - 2011												
Monatsmittel	265.38	265.33	265.53	265.63 +	265.58	265.50	265.36	265.41	265.35	265.35	265.31 -	265.33	
Maximum	266.26	266.02 -	266.61	267.23	266.73	266.24	266.15	267.80 +	266.71	266.57	266.54	266.43	
Jahr	2010	2009	2001	2006	2006	2006	2008	2007	2007	2006	2002	2010	
Minimum	264.05 -	264.35	264.69	264.68	264.72 +	264.45	264.23	264.15	264.06	264.08	264.05 -	264.17	
Jahr	2004	2006	2011	2003	2003	2003	2003	2003	2003	2003	2003	2003	
Amplitude	1.33	0.82	1.87	1.28	0.95	0.60 -	0.72	2.18 +	0.93	1.22	0.99	1.00	
Jahr	2004	2011	2001	2006	2002	2006	2002	2007	2002	2004	2004	2010	
Periode	Mittel	265.42 m ü.M.		Maximum	267.80 (09.Aug 2007)		Minimum	264.05 (26.Nov 2003)		Amplitude	3.75 m		

Darstellung der letzten 12 Jahre

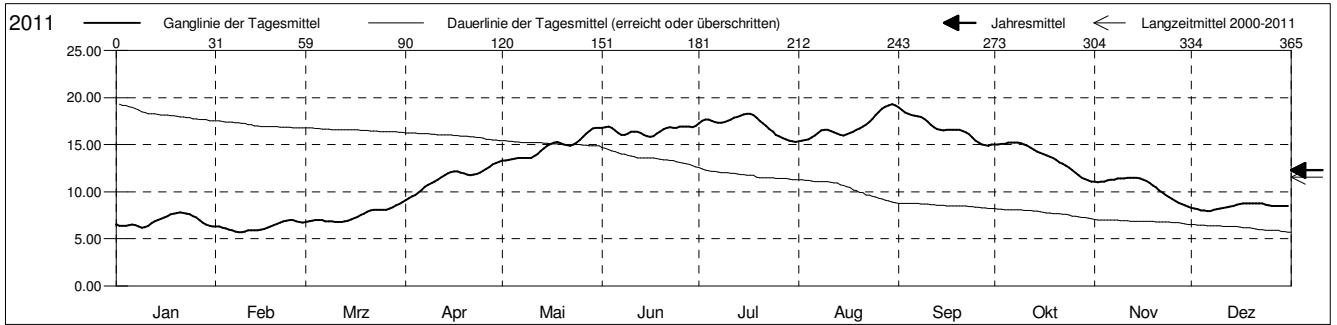


Grundwassertemperatur

Birstal
 Münchenstein 20.K.4 Hofmatt
 Abstichpunkt: 270.00 m ü.M.
 OK Terrain: 269.42 m ü.M.

Amt für Umweltschutz und Energie
Kanton Basel-Landschaft
 Koordinaten: 613490.56 / 263079.84

2011	Januar	Februar	März	April	Mai	Juni	Juli	August	September	Oktober	November	Dezember	
1	6.5	6.3	6.8 -	9.1 -	13.3 -	16.8	17.3	15.4 -	19.0 +	15.0	11.1	8.3	1
2	6.4	6.3	6.9	9.3	13.3 -	16.8	17.5	15.4 -	18.7	15.0	11.0	8.2	2
3	6.4	6.2	7.0	9.5	13.4	16.9	17.7	15.5	18.5	15.1	11.1	8.1	3
4	6.4	6.1	7.0	9.7	13.5	16.8	17.7	15.6	18.3	15.1	11.1	8.1	4
5	6.4	6.0	7.0	9.9	13.5	16.5	17.6	15.7	18.1	15.2 +	11.2	8.0	5
6	6.5	5.9	7.0	10.2	13.6	16.2	17.4	16.0	18.1	15.2 +	11.3	7.9 -	6
7	6.4	5.8	6.9	10.5	13.6	16.0	17.3	16.3	18.0	15.2 +	11.3	8.0	7
8	6.3	5.7 -	6.9	10.7	13.6	16.1	17.3	16.5	17.9	15.2 +	11.4	8.1	8
9	6.2 -	5.7 -	6.8 -	10.9	13.6	16.2	17.4	16.6	17.7	15.2 +	11.4	8.1	9
10	6.2 -	5.8	6.8 -	11.1	13.6	16.3	17.5	16.6	17.5	15.0	11.4	8.2	10
11	6.4	5.9	6.8 -	11.3	13.8	16.4	17.7	16.5	17.2	14.9	11.5 +	8.3	11
12	6.6	5.9	6.8 -	11.5	14.0	16.4	17.8	16.3	16.9	14.7	11.5 +	8.4	12
13	6.9	5.9	6.8 -	11.8	14.3	16.2	18.0	16.1	16.7	14.5	11.5 +	8.4	13
14	7.0	5.9	6.9	12.0	14.6	16.0	18.1	16.0	16.6	14.3	11.5 +	8.5	14
15	7.1	6.0	7.1	12.1	14.9	15.9	18.2	16.0	16.5	14.1	11.4	8.6	15
16	7.3	6.1	7.2	12.2	15.1	15.8 -	18.3 +	16.1	16.6	14.0	11.3	8.7	16
17	7.4	6.2	7.4	12.2	15.2	15.9	18.3 +	16.2	16.6	13.9	11.1	8.8 +	17
18	7.6	6.3	7.5	12.1	15.3	16.1	18.1	16.4	16.6	13.7	10.9	8.8 +	18
19	7.7	6.5	7.7	11.9	15.2	16.4	17.9	16.6	16.6	13.6	10.7	8.8 +	19
20	7.7	6.6	7.9	11.8	15.0	16.6	17.6	16.7	16.6	13.4	10.4	8.8 +	20
21	7.8 +	6.7	8.0	11.8	14.9	16.8	17.3	16.9	16.5	13.1	10.2	8.8 +	21
22	7.8 +	6.8	8.1	11.8	14.9	16.8	17.0	17.1	16.3	13.0	9.9	8.8 +	22
23	7.7	6.9	8.1	11.9	15.0	16.8	16.7	17.4	16.1	12.8	9.6	8.8 +	23
24	7.6	7.0 +	8.1	12.0	15.2	16.8	16.4	17.8	15.8	12.6	9.4	8.7	24
25	7.4	7.0 +	8.1	12.2	15.5	16.9	16.1	18.1	15.5	12.3	9.2	8.6	25
26	7.2	6.9	8.1	12.4	15.9	16.9	15.9	18.5	15.2	12.0	9.0	8.5	26
27	7.0	6.8	8.2	12.7	16.1	16.9	15.7	18.8	15.0	11.8	8.9	8.5	27
28	6.8	6.7	8.4	12.9	16.5	16.9	15.5	19.0	15.0	11.5	8.7	8.5	28
29	6.5	6.5	8.5	13.1	16.7	16.9	15.4	19.2	14.9 -	11.3	8.6	8.5	29
30	6.4	6.4	8.7	13.2 +	16.8 +	17.0 +	15.3 -	19.3 +	15.0	11.2	8.4 -	8.5	30
31	6.3	6.3	8.9 +	13.2 +	16.8 +	17.0 +	15.3 -	19.2	15.0	11.1 -	8.4 -	8.5	31
Monatsmittel	6.9	6.3 -	7.5	11.5	14.7	16.5	17.1 +	16.9	16.8	13.7	10.5	8.4	
Maximum	7.8	7.0 -	9.0	13.2	16.8	17.1	18.3	19.3 +	19.1	15.2	11.5	8.8	
Datum	19.01	23.02	31.03	30.04	29.05	30.06	15.07	30.08	01.09	04.10	10.11	17.12	
Minimum	6.2	5.7 -	6.8	9.0	13.3	15.8 +	15.3	15.3	14.9	11.1	8.3	7.9	
Datum	08.01	07.02	01.03	01.04	01.05	15.06	30.07	01.08	28.09	31.10	30.11	06.12	
Amplitude	1.6	1.3	2.2	4.2	3.5	1.3	3.0	4.0	4.2	4.1	3.2	0.9	
Jahr 2011	Mittel	12.3 °C		Maximum	19.3 (30.Aug)		Minimum	5.7 (07.Feb)		Amplitude	13.6 °C		



Periode	2000 - 2011												
Monatsmittel	6.8	6.4 -	7.6	9.9	13.1	15.0	16.6 +	16.5	15.3	13.1	10.1	8.1	
Maximum	9.2	8.3 -	9.2	13.4	16.8	17.1	18.7	19.3 +	19.1	16.0	12.9	10.4	
Jahr	2007	2007	2007	2007	2011	2009	2010	2011	2011	2009	2006	2006	
Minimum	4.0 -	5.3	5.8	7.3	9.5	12.5	13.7 +	13.1	12.8	10.1	7.1	5.4	
Jahr	2009	2010	2009	2008	2008	2010	2007	2007	2008	2010	2007	2007	
Amplitude	2.7	1.5 -	2.7	4.9 +	4.5	3.1	4.9 +	4.0	4.2	4.8	3.2	3.0	
Jahr	2009	2008	2010	2007	2009	2008	2010	2011	2011	2009	2011	2007	
Periode	Mittel	11.6 °C		Maximum	19.3 (30.Aug 2011)		Minimum	4.0 (19.Jan 2009)		Amplitude	15.3 °C		

Darstellung der letzten 12 Jahre

