

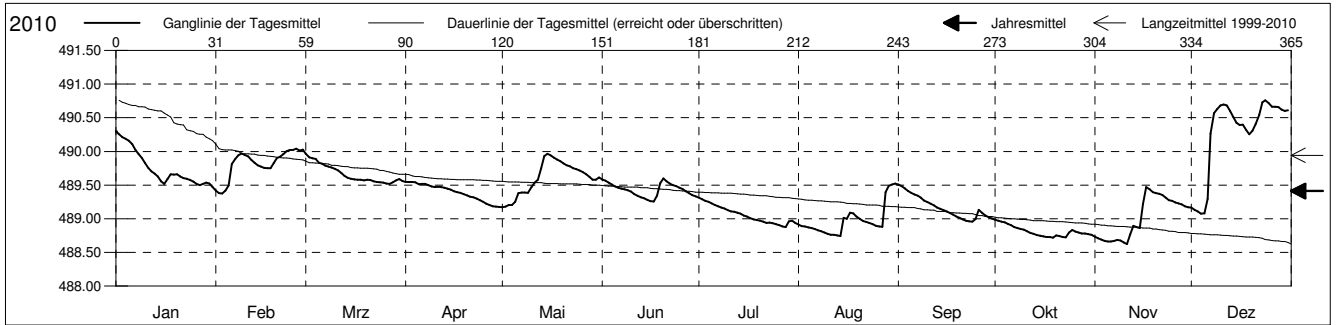
Grundwasserstände



Frenketal
 Oberdorf 92.J.02 Sekundarschule
 Abstichpunkt: 499.66 m ü.M.
 OK Terrain: 500.26 m ü.M.

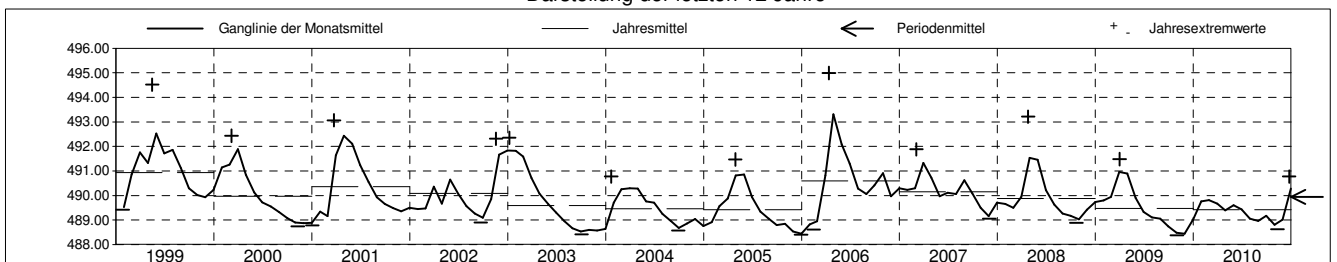
Amt für Umweltschutz und Energie
 Kanton Basel-Landschaft
 Koordinaten: 623726.25 / 249322.64

2010	Januar	Februar	März	April	Mai	Juni	Juli	August	September	Oktober	November	Dezember	
1	490.30 +	489.42	489.96 +	489.55 +	489.17 -	489.58	489.31 +	488.91	489.51 +	488.99 +	488.73	489.17	1
2	490.25	489.38	489.91	489.55 +	489.18	489.56	489.29	488.89	489.49	488.97	488.71	489.13	2
3	490.21	489.37 -	489.90	489.55 +	489.21	489.54	489.26	488.88	489.45	488.96	488.69	489.11	3
4	490.19	489.42	489.89	489.54	489.20	489.51	489.25	488.87	489.42	488.95	488.67	489.07 -	4
5	490.16	489.50	489.83	489.51	489.25	489.48	489.23	488.86	489.38	488.92	488.66	489.08	5
Tagesmittel													
6	490.11	489.81	489.82	489.52	489.38	489.46	489.20	488.85	489.36	488.90	488.66	489.30	6
7	490.02	489.88	489.79	489.52	489.39	489.45	489.18	488.83	489.34	488.87	488.67	490.27	7
8	489.96	489.94	489.78	489.50	489.39	489.44	489.17	488.81	489.31	488.86	488.69	490.57	8
9	489.90	489.97	489.76	489.48	489.39	489.42	489.15	488.80	489.27	488.85	488.68	490.63	9
10	489.82	489.94	489.74	489.47	489.47	489.40	489.13	488.78	489.25	488.84	488.65	490.68	10
11	489.75	489.92	489.72	489.47	489.54	489.37	489.11	488.76	489.22	488.82	488.63 -	490.70	11
12	489.70	489.87	489.68	489.47	489.58	489.34	489.10	488.76	489.20	488.79	488.77	490.68	12
13	489.67	489.83	489.64	489.46	489.74	489.32	489.09	488.75	489.16	488.78	488.90	490.60	13
14	489.63	489.80	489.61	489.44	489.93	489.30	489.08	488.74 -	489.15	488.76	488.87	490.51	14
15	489.56	489.77	489.59	489.43	489.97 +	489.28	489.05	489.01	489.13	488.75	488.86	490.43	15
Max. +													
16	489.52	489.76	489.58	489.41	489.94	489.26 -	489.03	489.00	489.11	488.74	489.22	490.39	16
17	489.59	489.75	489.58	489.39	489.91	489.26 -	489.01	489.09	489.08	488.73	489.47 +	490.40	17
18	489.66	489.75	489.58	489.39	489.88	489.34	488.99	489.08	489.06	488.73	489.44	490.32	18
19	489.66	489.83	489.57	489.37	489.85	489.52	488.98	489.03	489.03	488.72 -	489.39	490.26	19
20	489.66	489.90	489.58	489.35	489.82	489.60 +	488.97	489.00	489.01	488.75	489.38	490.31	20
Min. -													
21	489.63	489.92	489.57	489.33	489.79	489.56	488.96	488.97	488.99	488.74	489.37	490.41	21
22	489.61	489.96	489.56	489.32	489.78	489.52	488.94	488.95	488.97	488.73	489.35	490.54	22
23	489.60	490.00	489.55	489.30	489.75	489.50	488.94	488.94	488.96 -	488.72 -	489.31	490.73	23
24	489.58	490.02	489.54	489.28	489.74	489.48	488.93	488.92	488.96 -	488.79	489.28	490.76 +	24
25	489.55	490.02	489.54	489.25	489.72	489.46	488.92	488.90	489.00	488.83	489.27	490.72	25
26	489.52	490.04 +	489.52 -	489.23	489.69	489.44	488.90	488.88	489.13	488.81	489.24	490.67	26
27	489.50	490.01	489.52 -	489.20	489.66	489.41	488.89	488.88	489.09	488.80	489.23	490.67	27
28	489.52	490.03	489.54	489.19	489.62	489.38	488.88 -	489.39	489.05	488.78	489.21	490.66	28
29	489.54		489.57	489.18 -	489.58	489.35	488.96	489.49	489.02	488.78	489.19	490.62	29
30	489.52		489.59	489.18 -	489.58	489.33	488.97	489.51	489.01	488.77	489.17	490.60	30
31	489.47 -		489.56		489.61		488.94	489.52 +		488.76		490.61	31
Monatsmittel	489.75	489.82	489.66	489.39	489.60	489.43	489.06	488.97	489.17	488.81 -	489.01	490.28 +	
Maximum	490.32	490.05	489.98	489.56	489.97	489.62	489.32	489.54	489.51	488.99 -	489.49	490.77 +	
Datum	01.01	26.02	01.03	02.04	15.05	19.06	01.07	30.08	01.09	01.10	17.11	24.12	
Amplitude	0.88	0.69	0.48	0.39	0.80	0.37	0.46	0.80	0.56	0.28	0.87	1.71	
Jahr 2010	Mittel	489.41 m ü.M.		Maximum	490.77 (24.Dez)		Minimum	488.62 (10.Nov)		Amplitude	2.15 m		



Periode	1999 - 2010												
Monatsmittel	489.85	490.05	490.77	490.94 +	490.72	490.17	489.77	489.52	489.31	489.27 -	489.33	489.61	
Maximum	492.35	492.95	493.07	494.99 +	494.52	492.34	492.60	491.69	491.51	491.42 -	492.31	492.14	
Jahr	2003	1999	2001	2006 +	1999	1999	1999	1999	2006	2006	2002	2002	
Minimum	488.61	488.61	489.01	489.17 +	489.17 +	489.05	488.83	488.55	488.43	488.37 -	488.37 -	488.40	
Jahr	2004	2006	2001	2010	2010	2006	2003	2003	2003	2009	2009	2005	
Amplitude	2.16	3.26	4.06 +	3.70	3.52	2.71	1.57	1.74	1.69	1.10 -	2.12	1.81	
Jahr	2004	1999	2001	2006	1999	2006	1999	2007	2006	2002	2002	1999	
Periode	Mittel	489.94 m ü.M.		Maximum	494.99 (12.Apr 2006)		Minimum	488.37 (31.Okt 2009)		Amplitude	6.62 m		

Darstellung der letzten 12 Jahre



Grundwassertemperatur



Frenketal

Oberdorf

Abstichpunkt:

OK Terrain:

92.J.02

499.66

500.26

Sekundarschule

m ü.M.

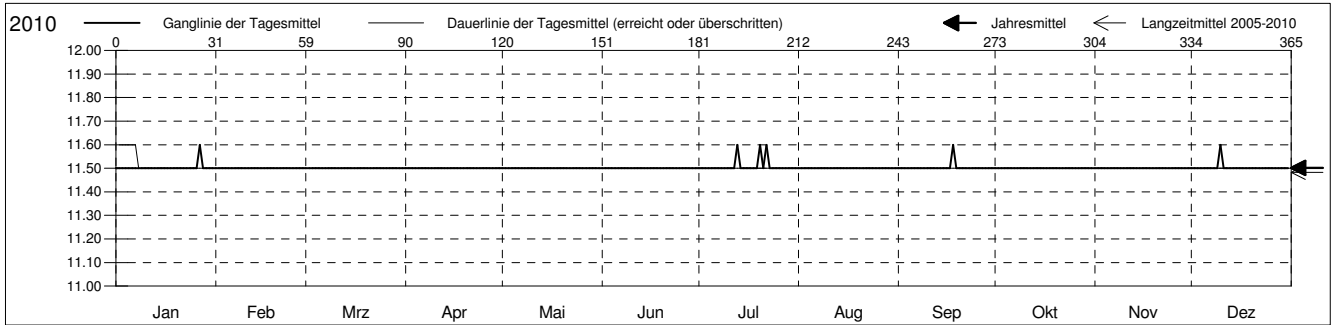
m ü.M.

Amt für Umweltschutz und Energie

Kanton Basel-Landschaft

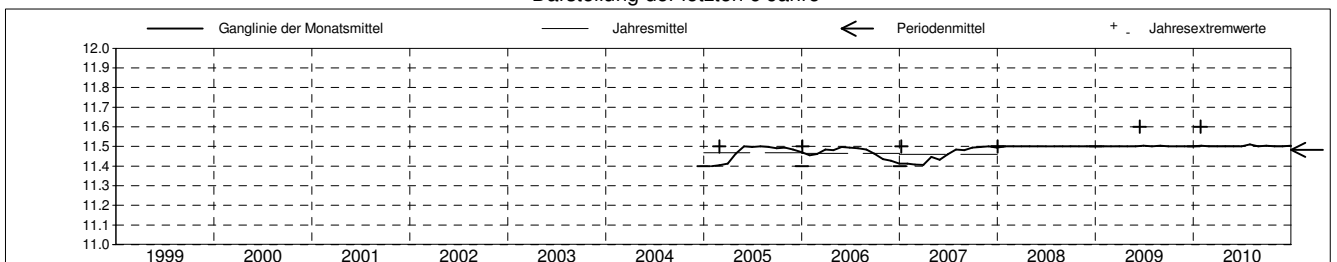
Koordinaten: 623726.25 / 249322.64

2010	Januar	Februar	März	April	Mai	Juni	Juli	August	September	Oktober	November	Dezember	
1	11.5 -	11.5 +	11.5 +	11.5 +	11.5 +	11.5 +	11.5 -	11.5 +	11.5 -	11.5 +	11.5 +	11.5 -	1
2	11.5 -	11.5 +	11.5 +	11.5 +	11.5 +	11.5 +	11.5 -	11.5 +	11.5 -	11.5 +	11.5 +	11.5 -	2
3	11.5 -	11.5 +	11.5 +	11.5 +	11.5 +	11.5 +	11.5 -	11.5 +	11.5 -	11.5 +	11.5 +	11.5 -	3
4	11.5 -	11.5 +	11.5 +	11.5 +	11.5 +	11.5 +	11.5 -	11.5 +	11.5 -	11.5 +	11.5 +	11.5 -	4
5	11.5 -	11.5 +	11.5 +	11.5 +	11.5 +	11.5 +	11.5 -	11.5 +	11.5 -	11.5 +	11.5 +	11.5 -	5
Tagesmittel													
6	11.5 -	11.5 +	11.5 +	11.5 +	11.5 +	11.5 +	11.5 -	11.5 +	11.5 -	11.5 +	11.5 +	11.5 -	6
7	11.5 -	11.5 +	11.5 +	11.5 +	11.5 +	11.5 +	11.5 -	11.5 +	11.5 -	11.5 +	11.5 +	11.5 -	7
8	11.5 -	11.5 +	11.5 +	11.5 +	11.5 +	11.5 +	11.5 -	11.5 +	11.5 -	11.5 +	11.5 +	11.5 -	8
9	11.5 -	11.5 +	11.5 +	11.5 +	11.5 +	11.5 +	11.5 -	11.5 +	11.5 -	11.5 +	11.5 +	11.5 -	9
10	11.5 -	11.5 +	11.5 +	11.5 +	11.5 +	11.5 +	11.5 -	11.5 +	11.5 -	11.5 +	11.5 +	11.6 +	10
11	11.5 -	11.5 +	11.5 +	11.5 +	11.5 +	11.5 +	11.5 -	11.5 +	11.5 -	11.5 +	11.5 +	11.5 -	11
12	11.5 -	11.5 +	11.5 +	11.5 +	11.5 +	11.5 +	11.5 -	11.5 +	11.5 -	11.5 +	11.5 +	11.5 -	12
13	11.5 -	11.5 +	11.5 +	11.5 +	11.5 +	11.5 +	11.6 +	11.5 +	11.5 -	11.5 +	11.5 +	11.5 -	13
14	11.5 -	11.5 +	11.5 +	11.5 +	11.5 +	11.5 +	11.5 -	11.5 +	11.5 -	11.5 +	11.5 +	11.5 -	14
15	11.5 -	11.5 +	11.5 +	11.5 +	11.5 +	11.5 +	11.5 -	11.5 +	11.5 -	11.5 +	11.5 +	11.5 -	15
Max. +													
16	11.5 -	11.5 +	11.5 +	11.5 +	11.5 +	11.5 +	11.5 -	11.5 +	11.5 -	11.5 +	11.5 +	11.5 -	16
17	11.5 -	11.5 +	11.5 +	11.5 +	11.5 +	11.5 +	11.5 -	11.5 +	11.5 -	11.5 +	11.5 +	11.5 -	17
18	11.5 -	11.5 +	11.5 +	11.5 +	11.5 +	11.5 +	11.5 -	11.5 +	11.6 +	11.5 +	11.5 +	11.5 -	18
19	11.5 -	11.5 +	11.5 +	11.5 +	11.5 +	11.5 +	11.5 -	11.5 +	11.5 -	11.5 +	11.5 +	11.5 -	19
20	11.5 -	11.5 +	11.5 +	11.5 +	11.5 +	11.5 +	11.6 +	11.5 +	11.5 -	11.5 +	11.5 +	11.5 -	20
Min. -													
21	11.5 -	11.5 +	11.5 +	11.5 +	11.5 +	11.5 +	11.5 -	11.5 +	11.5 -	11.5 +	11.5 +	11.5 -	21
22	11.5 -	11.5 +	11.5 +	11.5 +	11.5 +	11.5 +	11.6 +	11.5 +	11.5 -	11.5 +	11.5 +	11.5 -	22
23	11.5 -	11.5 +	11.5 +	11.5 +	11.5 +	11.5 +	11.5 -	11.5 +	11.5 -	11.5 +	11.5 +	11.5 -	23
24	11.5 -	11.5 +	11.5 +	11.5 +	11.5 +	11.5 +	11.5 -	11.5 +	11.5 -	11.5 +	11.5 +	11.5 -	24
25	11.5 -	11.5 +	11.5 +	11.5 +	11.5 +	11.5 +	11.5 -	11.5 +	11.5 -	11.5 +	11.5 +	11.5 -	25
26	11.5 -	11.5 +	11.5 +	11.5 +	11.5 +	11.5 +	11.5 -	11.5 +	11.5 -	11.5 +	11.5 +	11.5 -	26
27	11.6 +	11.5 +	11.5 +	11.5 +	11.5 +	11.5 +	11.5 -	11.5 +	11.5 -	11.5 +	11.5 +	11.5 -	27
28	11.5 -	11.5 +	11.5 +	11.5 +	11.5 +	11.5 +	11.5 -	11.5 +	11.5 -	11.5 +	11.5 +	11.5 -	28
29	11.5 -	11.5 +	11.5 +	11.5 +	11.5 +	11.5 +	11.5 -	11.5 +	11.5 -	11.5 +	11.5 +	11.5 -	29
30	11.5 -	11.5 +	11.5 +	11.5 +	11.5 +	11.5 +	11.5 -	11.5 +	11.5 -	11.5 +	11.5 +	11.5 -	30
31	11.5 -	11.5 +	11.5 +	11.5 +	11.5 +	11.5 +	11.5 -	11.5 +	11.5 -	11.5 +	11.5 +	11.5 -	31
Monatsmittel	11.5 +	11.5 +	11.5 +	11.5 +	11.5 +	11.5 +	11.5 +	11.5 +	11.5 +	11.5 +	11.5 +	11.5 +	
Maximum	11.6 +	11.5 -	11.5 -	11.5 -	11.5 -	11.5 -	11.6 +	11.5 -	11.6 +	11.5 -	11.5 -	11.6 +	
Datum	27.01	01.02	01.03	01.04	01.05	01.06	13.07	01.08	18.09	01.10	01.11	10.12	
Minimum	11.5 +	11.5 +	11.5 +	11.5 +	11.5 +	11.5 +	11.5 +	11.5 +	11.5 +	11.5 +	11.5 +	11.5 +	
Datum	01.01	01.02	01.03	01.04	01.05	01.06	01.07	01.08	01.09	01.10	01.11	01.12	
Amplitude	0.1	0.0 +	0.0 +	0.0 +	0.0 +	0.0 +	0.1	0.0 +	0.1	0.0 +	0.0 +	0.1	
Jahr 2010	Mittel	11.5 °C		Maximum	11.6 (27.Jan)		Minimum	11.5 (01.Jan)		Amplitude	0.1 °C		



Periode	2005 - 2010												
Monatsmittel	11.5 +	11.5 +	11.5 +	11.5 +	11.5 +	11.5 +	11.5 +	11.5 +	11.5 +	11.5 +	11.5 +	11.5 +	11.5 +
Maximum	11.6 +	11.5 -	11.5 -	11.5 -	11.5 -	11.6 +	11.6 +	11.6 +	11.6 +	11.5 -	11.5 -	11.6 +	
Jahr	2010	2005	2005	2005	2005	2009	2010	2009	2010	2005	2005	2010	
Minimum	11.4 +	11.4 +	11.4 +	11.4 +	11.4 +	11.4 +	11.4 +	11.4 +	11.4 +	11.4 +	11.4 +	11.4 +	
Jahr	2005	2005	2005	2005	2006	2005	2006	2005	2005	2005	2005	2005	
Amplitude	0.1 +	0.1 +	0.1 +	0.1 +	0.1 +	0.1 +	0.1 +	0.1 +	0.1 +	0.1 +	0.1 +	0.1 +	
Jahr	2006	2005	2005	2005	2006	2005	2006	2005	2005	2005	2005	2005	
Periode	Mittel	11.5 °C		Maximum	11.6 (14.Jun 2009)		Minimum	11.4 (01.Jan 2005)		Amplitude	0.2 °C		

Darstellung der letzten 6 Jahre



Leitfähigkeit



Frenketal

Oberdorf

Abstichpunkt:

OK Terrain:

92.J.02

499.66

500.26

Sekundarschule

m ü.M.

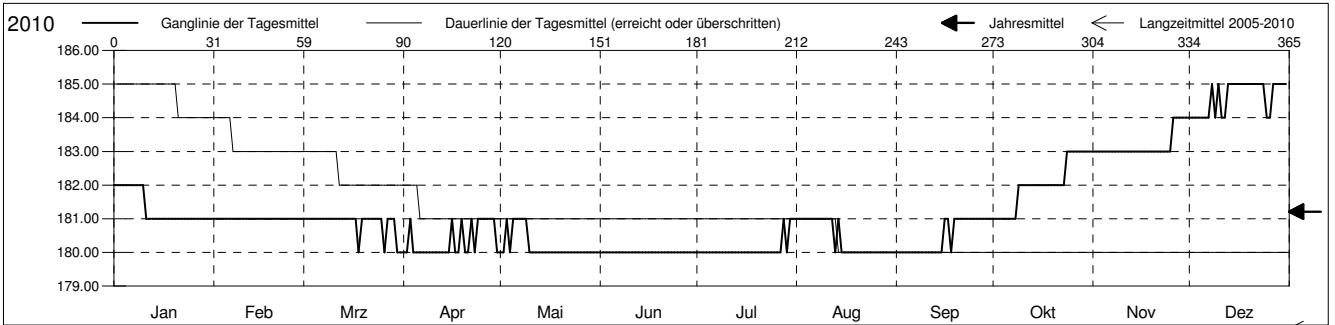
m ü.M.

Amt für Umweltschutz und Energie

Kanton Basel-Landschaft

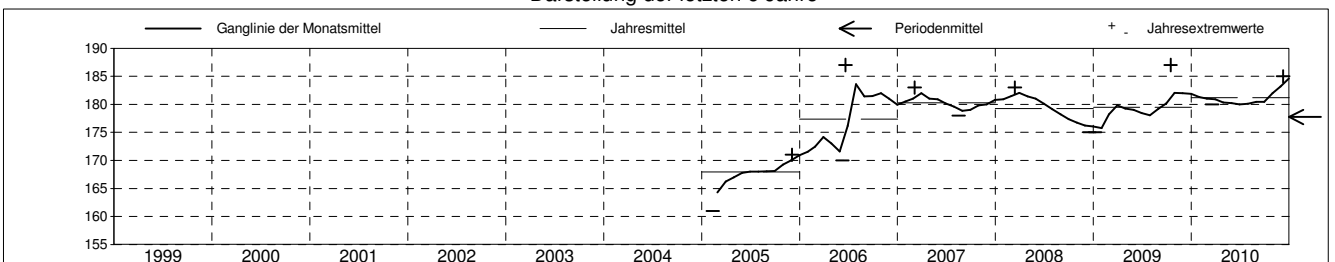
Koordinaten: 623726.25 / 249322.64

2010	Januar	Februar	März	April	Mai	Juni	Juli	August	September	Oktober	November	Dezember	
1	182 +	181 +	181 +	180 -	180 -	180 +	180 -	181 +	180 -	181 -	183 -	184 -	1
2	182 +	181 +	181 +	180 -	180 -	180 +	180 -	181 +	180 -	181 -	183 -	184 -	2
3	182 +	181 +	181 +	181 +	181 +	181 +	180 -	181 +	180 -	181 -	183 -	184 -	3
4	182 +	181 +	181 +	180 -	180 -	180 +	180 -	181 +	180 -	181 -	183 -	184 -	4
5	182 +	181 +	181 +	180 -	181 +	180 +	180 -	181 +	180 -	181 -	183 -	184 -	5
Tagesmittel													
6	182 +	181 +	181 +	180 -	181 +	180 +	180 -	181 +	180 -	181 -	183 -	184 -	6
7	182 +	181 +	181 +	180 -	181 +	180 +	180 -	181 +	180 -	181 -	183 -	184 -	7
8	182 +	181 +	181 +	180 -	181 +	180 +	180 -	181 +	180 -	181 -	183 -	185 +	8
9	182 +	181 +	181 +	180 -	181 +	180 +	180 -	181 +	180 -	182	183 -	184 -	9
10	182 +	181 +	181 +	180 -	180 -	180 +	180 -	181 +	180 -	182	183 -	185 +	10
11	181 -	181 +	181 +	180 -	180 -	180 +	180 -	181 +	180 -	182	183 -	184 -	11
12	181 -	181 +	181 +	180 -	180 -	180 +	180 -	181 +	180 -	182	183 -	184 -	12
13	181 -	181 +	181 +	180 -	180 -	180 +	180 -	180 -	180 -	182	183 -	185 +	13
14	181 -	181 +	181 +	180 -	180 -	180 +	180 -	181 +	180 -	182	183 -	185 +	14
15	181 -	181 +	181 +	180 -	180 -	180 +	180 -	180 -	180 -	182	183 -	185 +	15
Max. +													
16	181 -	181 +	181 +	181 +	180 -	180 +	180 -	180 -	181 +	182	183 -	185 +	16
17	181 -	181 +	181 +	180 -	180 -	180 +	180 -	180 -	181 +	182	183 -	185 +	17
18	181 -	181 +	180 -	180 -	180 -	180 +	180 -	180 -	180 -	182	183 -	185 +	18
19	181 -	181 +	181 +	181 +	180 -	180 +	180 -	180 -	181 +	182	183 -	185 +	19
20	181 -	181 +	181 +	180 -	180 -	180 +	180 -	180 -	181 +	182	183 -	185 +	20
Min. -													
21	181 -	181 +	181 +	180 -	180 -	180 +	180 -	180 -	181 +	182	183 -	185 +	21
22	181 -	181 +	181 +	181 +	180 -	180 +	180 -	180 -	181 +	182	183 -	185 +	22
23	181 -	181 +	181 +	180 -	180 -	180 +	180 -	180 -	181 +	182	183 -	185 +	23
24	181 -	181 +	181 +	181 +	180 -	180 +	180 -	180 -	181 +	183 +	183 -	185 +	24
25	181 -	181 +	181 +	181 +	180 -	180 +	180 -	180 -	181 +	183 +	183 -	184 -	25
26	181 -	181 +	180 -	181 +	180 -	180 +	180 -	180 -	181 +	183 +	184 +	184 -	26
27	181 -	181 +	181 +	181 +	180 -	180 +	180 -	180 -	181 +	183 +	184 +	185 +	27
28	181 -	181 +	181 +	181 +	180 -	180 +	181 +	180 -	181 +	183 +	184 +	185 +	28
29	181 -		181 +	181 +	180 -	180 +	180 -	180 -	181 +	183 +	184 +	185 +	29
30	181 -		180 -	180 -	180 -	180 +	181 +	180 -	181 +	183 +	184 +	185 +	30
31	181 -		180 -		180 -		181 +	180 -		183 +		185 +	31
Monatsmittel	181	181	181	180 -	180 -	180 -	180 -	180 -	180 -	182	183	185 +	
Maximum	182	181	181	181	181	180 -	181	181	181	183	184	185 +	
Datum	01.01	01.02	01.03	03.04	03.05	01.06	28.07	01.08	16.09	24.10	26.11	08.12	
Minimum	181	181	180 -	180 -	180 -	180 -	180 -	180 -	180 -	181	183	184 +	
Datum	11.01	01.02	18.03	01.04	01.05	01.06	01.07	13.08	01.09	01.10	01.11	01.12	
Amplitude	1	0 +	1	1	1	0 +	1	1	1	2	1	1	
Jahr 2010	Mittel	181 µs/cm	Maximum	185 (08.Dez)	Minimum	180 (18.Mrz)	Amplitude	5 µs/cm					



Periode	2005 - 2010												
Monatsmittel	178	176 -	178	177	177	177	178	178	178	179 +	179 +	179 +	
Maximum	182	182	183	182	181 -	187 +	184	183	182	187 +	184	185	
Jahr	2010	2008	2007	2007	2007	2006	2006	2006	2006	2009 +	2010	2010	
Minimum	171 +	161 -	165	167	167	168	168	168	167	169	170	170	
Jahr	2006	2005	2005	2005	2005	2005	2005	2005	2005	2005	2005	2005	
Amplitude	2	5	4	2	1 -	17 +	1 -	3	2	6	1 -	2	
Jahr	2009	2009	2006	2006	2005	2006	2006	2006	2005	2009	2006	2006	
Periode	Mittel	178 µs/cm	Maximum	187 (20.Jun 2006)	Minimum	161 (10.Feb 2005)	Amplitude	26 µs/cm					

Darstellung der letzten 6 Jahre



Grundwasserspiegel im Frenketal

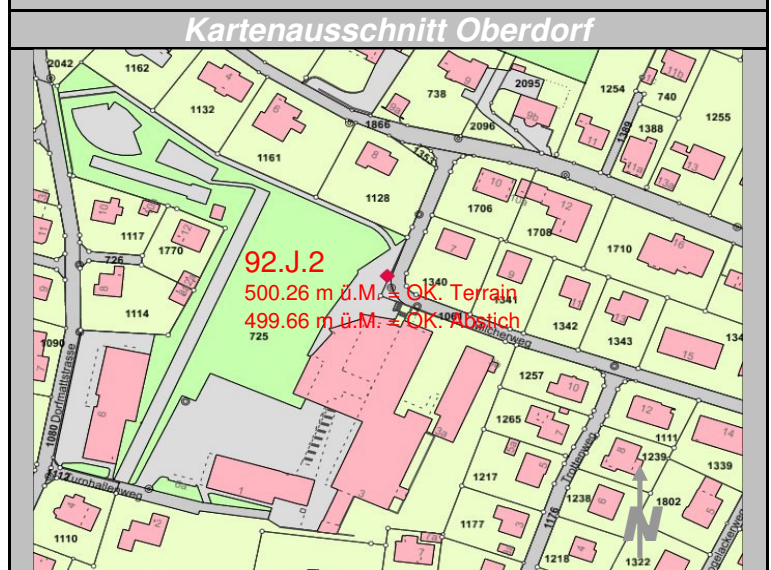
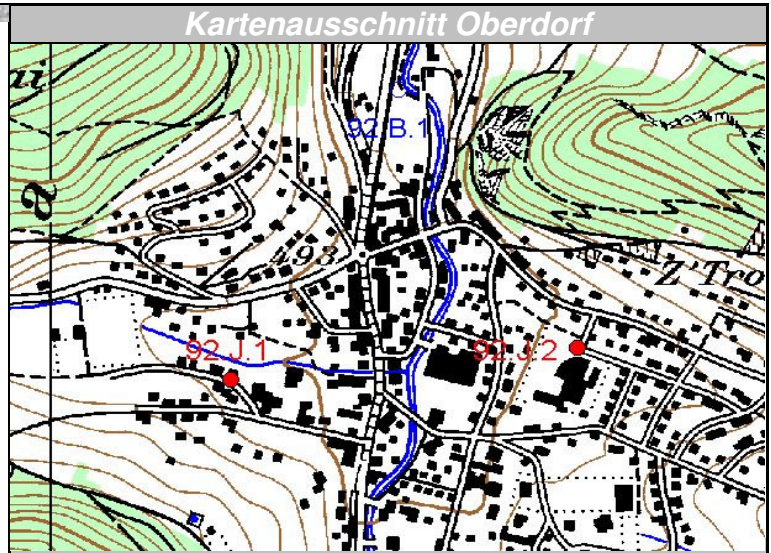
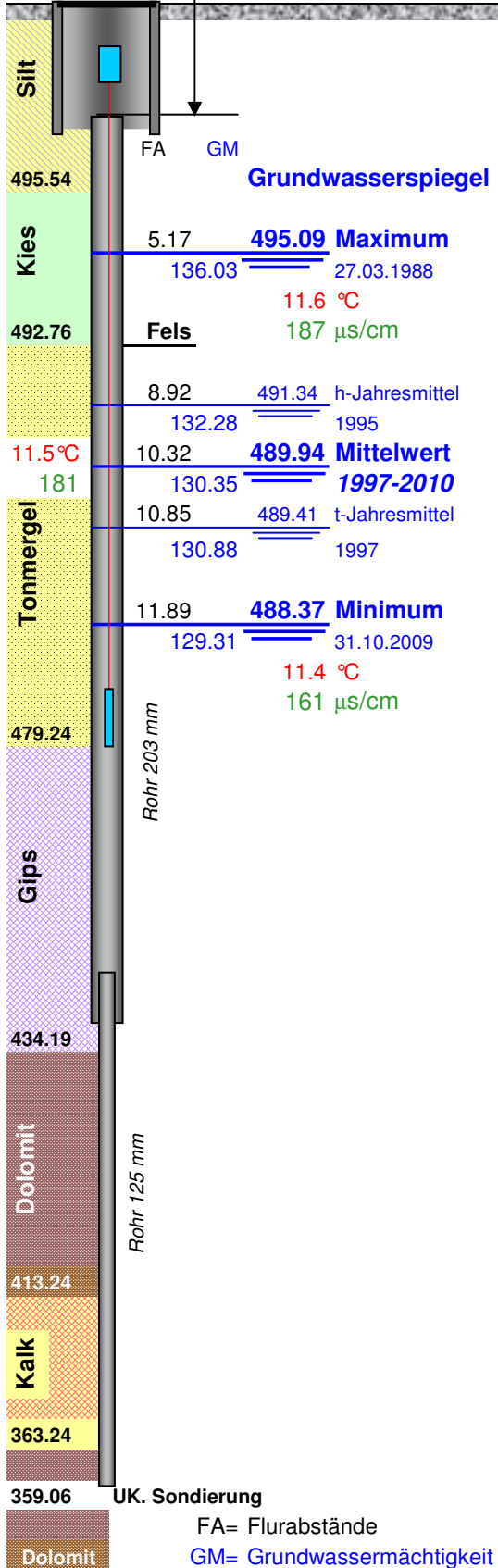
Station 92.J.2 Oberdorf
Felsgrundwasser

Sekundarschule

Koordinaten: 623'726.25 / 249'322.64

Messwerte: Grundwasserspiegel
Temperatur (ab 2005)
Leitfähigkeit (ab 2005)

OK. Abstich "Blechabdeckung"
499.66 m ü.M. OK. Terrain = Schulhausplatz
500.26 m ü.M.



FA= Flurabstände
GM= Grundwassermächtigkeit in m