

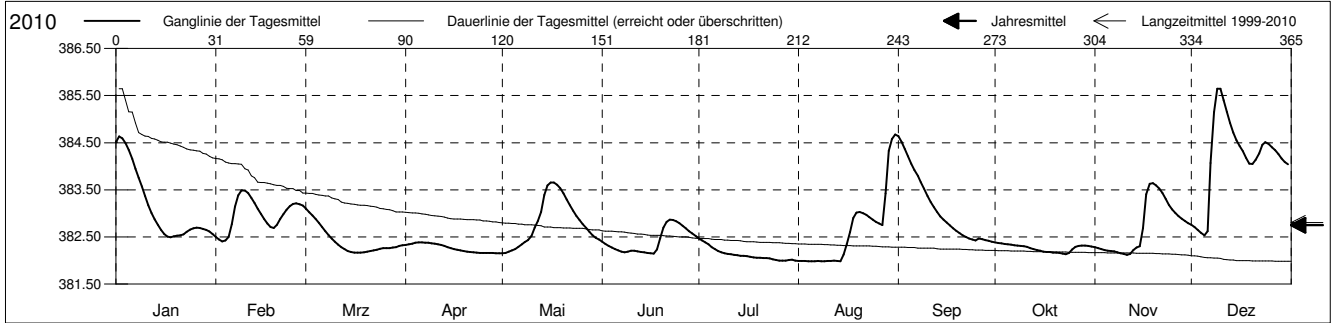
Grundwasserstände



Frenketal
 Bubendorf 33.J.2 St. Lampenberg
 Abstichpunkt: 391.83 m ü.M.
 OK Terrain: 390.71 m ü.M.

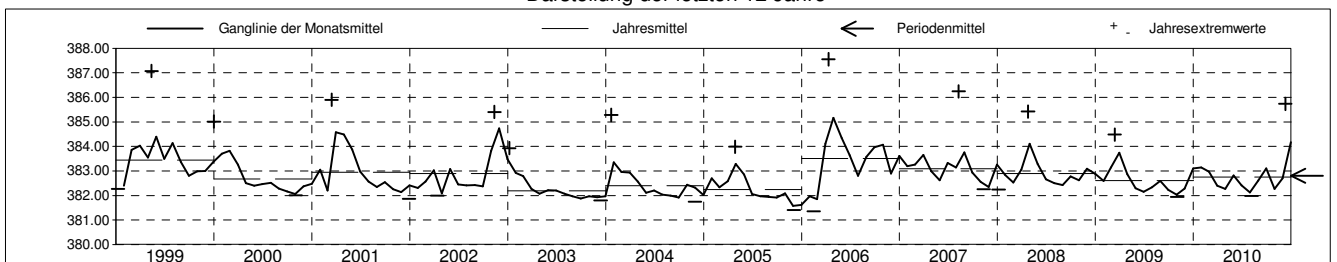
Amt für Umweltschutz und Energie
 Kanton Basel-Landschaft
 Koordinaten: 624098.56 / 254629.44

2010	Januar	Februar	März	April	Mai	Juni	Juli	August	September	Oktober	November	Dezember	
1	384.51	382.50	383.10 +	382.33	382.15 -	382.40	382.47 +	381.99	384.64 +	382.39 +	382.28	382.76	1
2	384.63 +	382.45	383.02	382.34	382.16	382.35	382.42	381.99	384.52	382.37	382.26	382.71	2
3	384.59	382.41 -	382.95	382.36	382.19	382.31	382.38	381.99	384.37	382.36	382.24	382.65	3
4	384.49	382.43	382.88	382.38	382.22	382.27	382.34	381.99	384.21	382.35	382.22	382.59	4
5	384.35	382.50	382.80	382.39 +	382.24	382.24	382.28	381.98 -	384.05	382.34	382.21	382.53 -	5
Tagesmittel													
6	384.16	382.77	382.71	382.38	382.29	382.21	382.24	381.98 -	383.92	382.33	382.20	382.62	6
7	383.95	383.14	382.62	382.38	382.34	382.19	382.20	381.99	383.79	382.32	382.19	384.07	7
8	383.76	383.38	382.54	382.38	382.39	382.17	382.17	381.99	383.66	382.31	382.18	385.15	8
9	383.57	383.49 +	382.47	382.37	382.43	382.19	382.16	381.99	383.52	382.31	382.16	385.65 +	9
10	383.37	383.49 +	382.40	382.36	382.52	382.21	382.14	381.99	383.37	382.30	382.14	385.64	10
11	383.18	383.43	382.34	382.35	382.70	382.21	382.13	381.99	383.24	382.29	382.12 -	385.40	11
12	383.01	383.33	382.28	382.33	382.84	382.20	382.12	381.99	383.13	382.26	382.14	385.16	12
13	382.87	383.22	382.24	382.31	383.03	382.18	382.11	381.99	383.03	382.24	382.22	384.92	13
14	382.76	383.10	382.20	382.28	383.39	382.17	382.10	381.98 -	382.93	382.22	382.28	384.72	14
15	382.65	382.99	382.18	382.26	383.59	382.16	382.10	382.13	382.86	382.21	382.30	384.55	15
Max. +													
16	382.56	382.88	382.17	382.24	383.66 +	382.15 -	382.09	382.35	382.80	382.19	382.68	384.43	16
17	382.51	382.79	382.16 -	382.23	383.65	382.15 -	382.08	382.60	382.74	382.18	383.40	384.32	17
18	382.49 -	382.71	382.17	382.21	383.61	382.23	382.07	382.90	382.69	382.18	383.63	384.18	18
19	382.51	382.69	382.18	382.20	383.53	382.47	382.06	383.02	382.63	382.16	383.64 +	384.05	19
20	382.53	382.76	382.19	382.19	383.42	382.70	382.06	383.03	382.58	382.16	383.59	384.05	20
Min. -													
21	382.53	382.88	382.20	382.18	383.29	382.82	382.05	383.01	382.54	382.16	383.53	384.14	21
22	382.55	382.98	382.21	382.17	383.17	382.86 +	382.05	382.97	382.50	382.15	383.43	384.27	22
23	382.61	383.08	382.23	382.17	383.05	382.86 +	382.04	382.92	382.47	382.14 -	383.31	384.45	23
24	382.66	383.15	382.25	382.16	382.95	382.83	382.03	382.86	382.44	382.16	383.18	384.51	24
25	382.68	383.20	382.26	382.16	382.86	382.79	382.01	382.82	382.43	382.23	383.08	384.47	25
26	382.69	383.21	382.27	382.16	382.77	382.74	382.00 -	382.78	382.46	382.29	383.01	384.41	26
27	382.69	383.19	382.26	382.16	382.69	382.68	382.00 -	382.75	382.45	382.31	382.94	384.34	27
28	382.67	383.17	382.27	382.16	382.61	382.63	382.00 -	383.42	382.43	382.32	382.88	384.26	28
29	382.65		382.28	382.15 -	382.54	382.57	382.01	384.33	382.42	382.32	382.84	384.16	29
30	382.62		382.31	382.15 -	382.48	382.52	382.02	384.57	382.40 -	382.31	382.79	384.09	30
31	382.56		382.32		382.44		382.00 -	384.67 +		382.30		384.04	31
Monatsmittel	383.14	382.97	382.40	382.26	382.81	382.42	382.13 -	382.61	383.11	382.26	382.70	384.17 +	
Maximum	384.64	383.50	383.14	382.39 -	383.66	382.87	382.49	384.68	384.68	382.39 -	383.65	385.73 +	
Datum	02.01	09.02	01.03	05.04	16.05	22.06	01.07	31.08	01.09	01.10	19.11	09.12	
Amplitude	2.15	1.10	0.98	0.23	1.51	0.73	0.50	2.70	2.29	0.26	1.54	3.23	
Jahr 2010	Mittel	382.75 m ü.M.		Maximum	385.73 (09.Dez)		Minimum	381.98 (06.Aug)		Amplitude	3.75 m		



Periode	1999 - 2010												
Monatsmittel	382.85	382.86	383.30 +	383.16	383.03	382.67	382.55 -	382.61	382.55 -	382.59	382.61	382.86	
Maximum	385.28	387.00	385.90	387.55 +	387.07	384.40 -	386.18	386.24	386.31	385.39	385.40	385.73	
Jahr	2004	1999	2001	2006 +	1999	2006	1999	2007	2006	2006	2002	2010	
Minimum	381.66	381.35 -	381.82	381.99 +	381.97	381.85	381.81	381.78	381.78	381.70	381.40	381.40	
Jahr	2006	2006	2005	2002	2004	2005	2005	2005	2005	2005	2005	2005	
Amplitude	3.51	4.39 +	3.95	3.27	3.98	1.69 -	3.27	3.57	3.47	2.71	2.43	3.23	
Jahr	2004	1999	2001	2006	1999	2007	1999	2007	2006	2004	2008	2010	
Periode	Mittel	382.80 m ü.M.		Maximum	387.55 (11.Apr 2006)		Minimum	381.35 (14.Feb 2006)		Amplitude	6.20 m		

Darstellung der letzten 12 Jahre



Grundwassertemperatur



Frenketal

Bubendorf

Abstichpunkt:

OK Terrain:

33.J.2

391.83

390.71

St. Lampenberg

m ü.M.

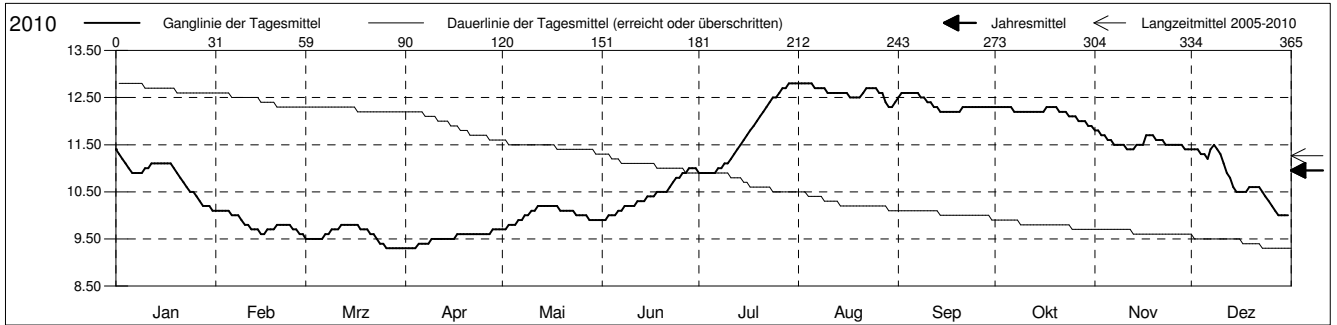
m ü.M.

Amt für Umweltschutz und Energie

Kanton Basel-Landschaft

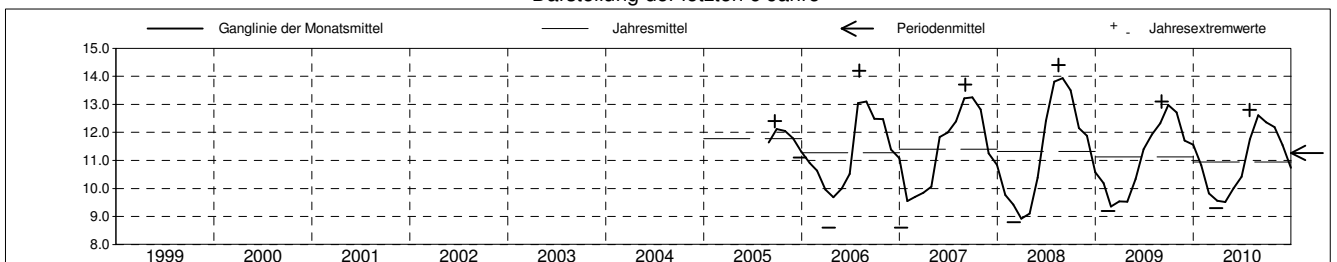
Koordinaten: 624098.56 / 254629.44

2010	Januar	Februar	März	April	Mai	Juni	Juli	August	September	Oktober	November	Dezember	
1	11.4 +	10.1 +	9.5	9.3 -	9.7 -	9.9 -	10.9 -	12.8 +	12.5	12.3 +	11.8 +	11.4	1
2	11.3	10.1 +	9.5	9.3 -	9.7 -	9.9 -	10.9 -	12.8 +	12.6 +	12.3 +	11.8 +	11.4	2
3	11.2	10.1 +	9.5	9.3 -	9.8	10.0	10.9 -	12.8 +	12.6 +	12.3 +	11.7	11.4	3
4	11.1	10.1 +	9.5	9.3 -	9.8	10.0	10.9 -	12.8 +	12.6 +	12.3 +	11.7	11.3	4
5	11.0	10.1 +	9.5	9.4	9.8	10.0	10.9 -	12.8 +	12.6 +	12.3 +	11.6	11.3	5
Tagesmittel													
6	10.9	10.0	9.5	9.4	9.9	10.1	10.9 -	12.7	12.6 +	12.3 +	11.6	11.2	6
7	10.9	10.0	9.6	9.4	9.9	10.1	11.0	12.7	12.6 +	12.2	11.5	11.4	7
8	10.9	10.0	9.6	9.4	10.0	10.2	11.0	12.7	12.5	12.2	11.5	11.5 +	8
9	10.9	9.9	9.7	9.5	10.0	10.2	11.1	12.7	12.5	12.2	11.5	11.4	9
10	11.0	9.8	9.7	9.5	10.1	10.2	11.1	12.6	12.4	12.2	11.5	11.3	10
11	11.0	9.8	9.7	9.5	10.1	10.2	11.2	12.6	12.4	12.2	11.4 -	11.1	11
12	11.1	9.7	9.8 +	9.5	10.2 +	10.3	11.3	12.6	12.3	12.2	11.4 -	10.9	12
13	11.1	9.7	9.8 +	9.5	10.2 +	10.3	11.4	12.6	12.3	12.2	11.4 -	10.8	13
14	11.1	9.7	9.8 +	9.5	10.2 +	10.3	11.5	12.6	12.2 -	12.2	11.5	10.6	14
15	11.1	9.6 -	9.8 +	9.5	10.2 +	10.4	11.6	12.6	12.2 -	12.2	11.5	10.5	15
Max. +													
16	11.1	9.6 -	9.8 +	9.5	10.2 +	10.4	11.7	12.6	12.2 -	12.2	11.5	10.5	16
17	11.1	9.7	9.8 +	9.6	10.2 +	10.4	11.8	12.5	12.2 -	12.3 +	11.7	10.5	17
18	11.1	9.7	9.7	9.6	10.2 +	10.5	11.9	12.5	12.2 -	12.3 +	11.7	10.5	18
19	11.0	9.7	9.7	9.6	10.1	10.5	12.0	12.5	12.2 -	12.3 +	11.7	10.6	19
20	10.9	9.8	9.7	9.6	10.1	10.5	12.1	12.5	12.2 -	12.3 +	11.6	10.6	20
Min. -													
21	10.8	9.8	9.6	9.6	10.1	10.5	12.2	12.6	12.3	12.2	11.6	10.6	21
22	10.7	9.8	9.6	9.6	10.1	10.6	12.3	12.7	12.3	12.2	11.6	10.6	22
23	10.6	9.8	9.5	9.6	10.1	10.7	12.4	12.7	12.3	12.2	11.5	10.5	23
24	10.5	9.8	9.4	9.6	10.0	10.8	12.5	12.7	12.3	12.1	11.5	10.4	24
25	10.5	9.7	9.4	9.6	10.0	10.8	12.5	12.7	12.3	12.1	11.5	10.3	25
26	10.4	9.7	9.3 -	9.6	10.0	10.9	12.6	12.6	12.3	12.1	11.5	10.2	26
27	10.3	9.6 -	9.3 -	9.6	10.0	10.9	12.7	12.6	12.3	12.0	11.5	10.1	27
28	10.2	9.6 -	9.3 -	9.7 +	9.9	11.0 +	12.7	12.4	12.3	12.0	11.5	10.0 -	28
29	10.2	9.7	9.3 -	9.7 +	9.9	11.0 +	12.8 +	12.3 -	12.3	12.0	11.4 -	10.0 -	29
30	10.2	9.7	9.3 -	9.7 +	9.9	11.0 +	12.8 +	12.3 -	12.3	11.9 -	11.4 -	10.0 -	30
31	10.1 -	9.7	9.3 -	9.7 +	9.9	11.0 +	12.8 +	12.4	12.3	11.9 -	11.4 -	10.0 -	31
Monatsmittel	10.8	9.8	9.6	9.5 -	10.0	10.4	11.8	12.6 +	12.4	12.2	11.6	10.7	
Maximum	11.4	10.1	9.8	9.7 -	10.2	11.0	12.8 +	12.8 +	12.6	12.3	11.8	11.5	
Datum	01.01	01.02	12.03	28.04	12.05	28.06	29.07	01.08	02.09	01.10	01.11	08.12	
Minimum	10.1	9.6	9.3 -	9.3 -	9.7	9.9	10.9	12.3 +	12.2	11.9	11.4	10.0	
Datum	31.01	15.02	26.03	01.04	01.05	01.06	01.07	29.08	14.09	30.10	11.11	28.12	
Amplitude	1.3	0.5	0.5	0.4	0.5	1.1	1.9	0.5	0.4	0.4	0.4	1.5	
Jahr 2010	Mittel	11.0 °C		Maximum	12.8 (29.Jul)		Minimum	9.3 (26.Mrz)		Amplitude	3.5 °C		



Periode	2005 - 2010												
Monatsmittel	10.3	9.8	9.6 -	9.6 -	10.5	11.4	12.6	12.8 +	12.8 +	12.4	11.6	11.0	
Maximum	11.4	10.8	10.2 -	11.1	12.1	12.9	14.3	14.4 +	13.9	13.1	12.6	11.7	
Jahr	2010	2006	2006	2007	2007	2008	2008	2008	2008	2007	2006	2005	
Minimum	8.6 -	8.9	8.8	8.6 -	9.3	9.9	10.9	11.3	11.8 +	11.8 +	10.6	9.5	
Jahr	2007	2008	2008	2006	2008	2010	2010	2005	2005	2005	2006	2007	
Amplitude	1.8	0.9	0.7 -	1.8	2.1 +	1.9	2.0	2.0	1.5	1.0	2.0	2.0	
Jahr	2007	2007	2007	2007	2008	2006	2006	2006	2008	2007	2006	2006	
Periode	Mittel	11.3 °C		Maximum	14.4 (15.Aug 2008)		Minimum	8.6 (11.Apr 2006)		Amplitude	5.8 °C		

Darstellung der letzten 6 Jahre



Grundwasserspiegel im Frenketal

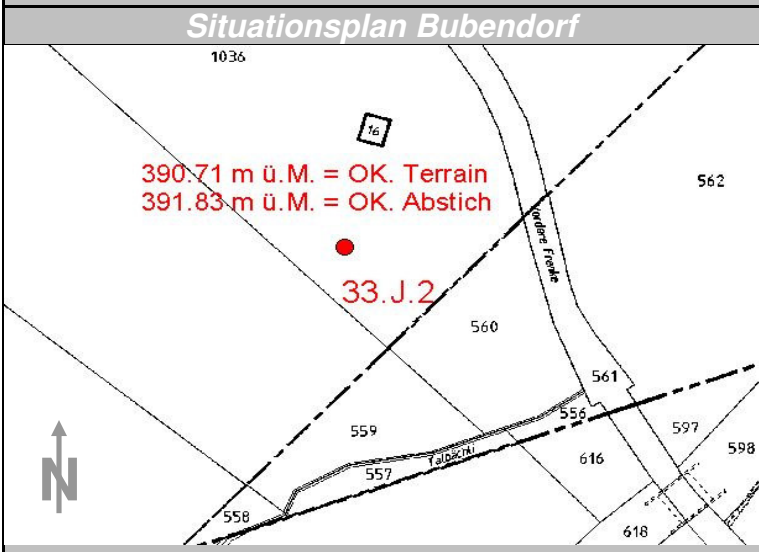
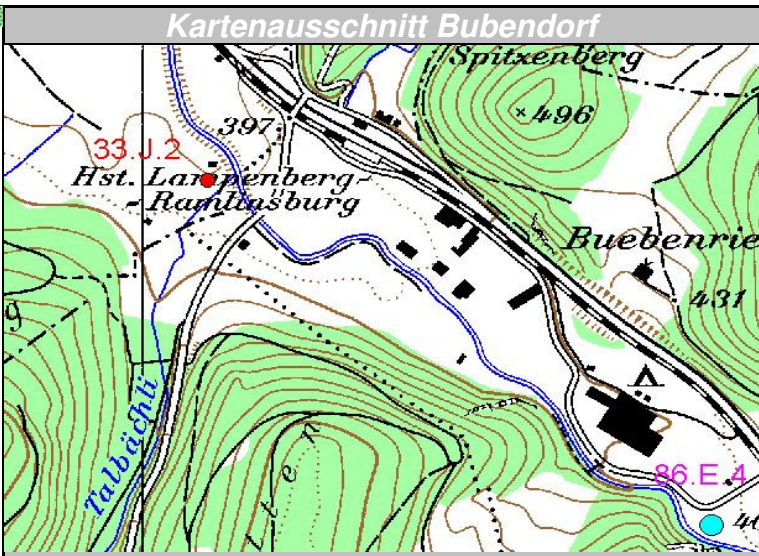
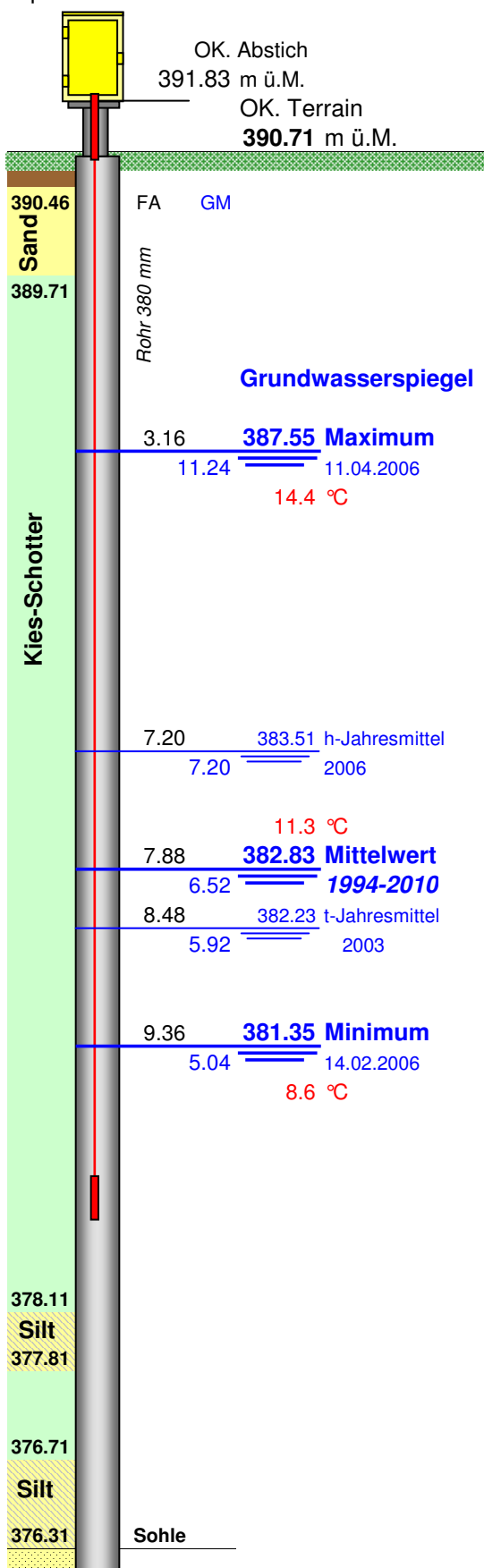
Station 33.J.2 Bubendorf

Opm 201353

Station Lampenberg

Koordinaten: 624'098.58 / 254'629.44

Messwerte: **Grundwasserspiegel**
Temperatur



375.01 UK. Sondierung
Callovien (Mergel) FA= Flurabstände GM= Grundwassermächtigkeit in m