

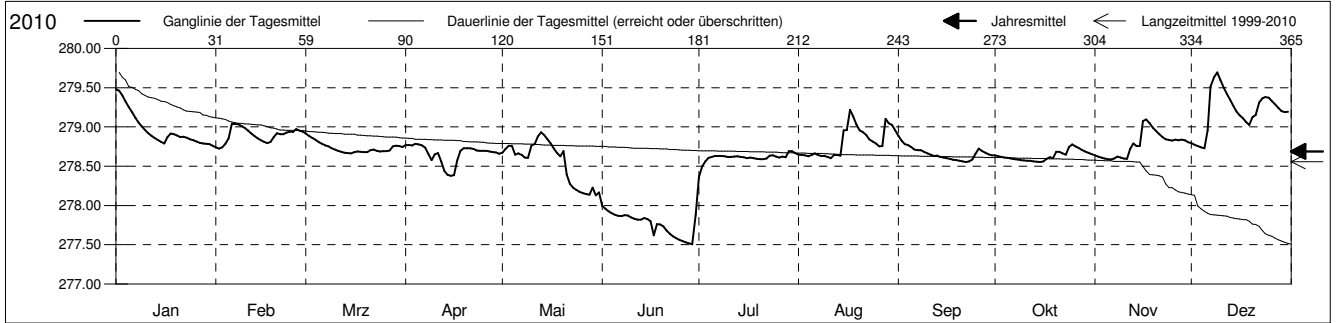
Grundwasserstände



Ergolzthal
 Füllinsdorf 35.J.07 Tennishalle
 Abstichpunkt: 288.50 m ü.M.
 OK Terrain: 287.81 m ü.M.

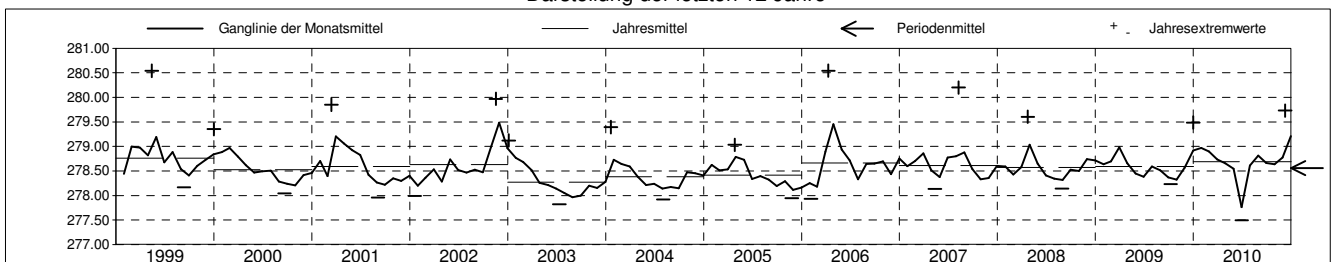
Amt für Umweltschutz und Energie
Kanton Basel-Landschaft
 Koordinaten: 621481.75 / 262056.70

2010	Januar	Februar	März	April	Mai	Juni	Juli	August	September	Oktober	November	Dezember	
1	279.48 +	278.74	278.91 +	278.77	278.67	278.00 +	278.36 -	278.65	278.89 +	278.64	278.64	278.79	1
2	279.46	278.72 -	278.88	278.77	278.72	277.96	278.50	278.64	278.83	278.63	278.62	278.78	2
3	279.40	278.74	278.86	278.77	278.76	277.93	278.56	278.64	278.78	278.62	278.61	278.76	3
4	279.32	278.78	278.84	278.78 +	278.76	277.90	278.61	278.63	278.77	278.61	278.60	278.74	4
5	279.25	278.86	278.81	278.78 +	278.65	277.88	278.62	278.64	278.74	278.61	278.59	278.73 -	5
Tagesmittel													
6	279.18	279.04 +	278.79	278.77	278.66	277.87	278.63	278.66	278.71	278.60	278.58 -	278.96	6
7	279.12	279.04 +	278.77	278.74	278.64	277.87	278.63	278.64	278.71	278.59	278.60	279.52	7
8	279.06	279.04 +	278.75	278.65	278.61	277.88	278.63	278.63	278.70	278.58	278.62	279.64	8
9	279.01	279.02	278.73	278.58	278.61	277.87	278.62	278.63	278.68	278.58	278.61	279.69 +	9
10	278.96	278.98	278.71	278.65	278.77	277.85	278.62	278.62	278.66	278.58	278.60	279.60	10
11	278.92	278.95	278.70	278.67	278.78	277.83	278.62	278.60 -	278.65	278.57	278.59	279.50	11
12	278.89	278.92	278.69	278.56	278.88	277.82	278.62	278.64	278.63	278.57	278.72	279.42	12
13	278.86	278.88	278.67	278.44	278.93 +	277.82	278.63	278.65	278.63	278.56	278.79	279.35	13
14	278.83	278.86	278.67	278.39	278.89	277.84	278.62	278.64	278.62	278.56	278.76	279.27	14
15	278.81	278.83	278.66 -	278.38 -	278.84	277.83	278.61	278.96	278.61	278.55 -	278.76	279.20	15
16	278.79	278.81	278.68	278.39	278.79	277.80	278.60	278.96	278.60	278.56	279.08	279.15	16
17	278.87	278.79	278.69	278.57	278.73	277.62	278.61	279.22 +	278.59	278.60	279.09 +	279.11	17
18	278.92	278.81	278.68	278.70	278.67	277.76	278.60	279.13	278.58	278.61	279.05	279.06	18
19	278.91	278.87	278.68	278.73	278.63	277.76	278.60	279.03	278.58	278.60	278.99	279.03	19
20	278.89	278.92	278.68	278.73	278.69	277.73	278.59	278.96	278.57	278.68	278.95	279.12	20
21	278.87	278.91	278.70	278.73	278.39	277.68	278.59	278.93	278.56 -	278.68	278.91	279.15	21
22	278.87	278.91	278.71	278.72	278.28	277.64	278.60	278.90	278.56 -	278.66	278.87	279.31	22
23	278.86	278.93	278.70	278.70	278.23	277.61	278.64	278.84	278.56 -	278.65	278.84	279.36	23
24	278.84	278.94	278.69	278.70	278.20	277.58	278.64	278.82	278.59	278.75	278.83	279.38	24
25	278.83	278.94	278.69	278.70	278.18	277.56	278.62	278.79	278.66	278.78 +	278.83	279.37	25
26	278.81	278.97	278.69	278.70	278.16	277.55	278.61	278.75	278.72	278.75	278.84	279.33	26
27	278.80	278.95	278.70	278.69	278.14	277.53	278.62	278.76	278.69	278.73	278.83	279.29	27
28	278.79	278.94	278.75	278.68	278.14	277.52	278.62	279.10	278.67	278.71	278.84	279.24	28
29	278.79		278.76	278.67	278.23	277.51 -	278.69 +	279.05	278.65	278.69	278.83	279.20	29
30	278.78		278.76	278.66	278.13 -	277.89	278.69 +	279.03	278.64	278.67	278.81	279.19	30
31	278.76 -		278.75		278.17		278.67	278.96		278.65		279.20	31
Monatsmittel	278.97	278.90	278.73	278.66	278.55	277.76 -	278.61	278.81	278.66	278.63	278.78	279.21 +	
Maximum Datum	279.49 01.01	279.04 07.02	278.93 01.03	278.79 04.04	278.99 10.05	278.24 30.06	278.73 29.07	279.27 17.08	278.92 01.09	278.79 24.10	279.15 16.11	279.73 + 09.12	
Amplitude	0.73	0.33	0.28	0.43	0.95	0.75	0.48	0.68	0.37	0.24	0.57	1.00	
Jahr 2010	Mittel	278.69 m ü.M.		Maximum	279.73 (09.Dez)		Minimum	277.50 (30.Jun)		Amplitude	2.23 m		



Periode	1999 - 2010												
Monatsmittel	278.62	278.62	278.77 +	278.71	278.62	278.44	278.46	278.44	278.37 -	278.47	278.54	278.64	
Maximum Jahr	279.49 2010	280.52 1999	279.85 2001	280.54 + 2006	280.54 + 1999	279.19 - 2007	279.58 1999	280.20 2007	279.62 2006	279.52 2002	279.97 2002	279.73 2010	
Minimum Jahr	277.99 2002	277.93 2006	278.06 2006	278.08 + 2002	278.00 2004	277.50 - 2010	277.82 2003	277.83 2003	277.85 2003	277.88 2003	277.91 2003	277.96 2005	
Amplitude Jahr	1.37 2004	2.16 + 1999	1.62 2001	1.62 2006	1.86 1999	0.80 - 2007	1.19 1999	1.82 2007	1.42 2006	1.11 2004	1.04 2002	1.13 1999	
Periode	Mittel	278.56 m ü.M.		Maximum	280.54 (10.Apr 2006)		Minimum	277.50 (30.Jun 2010)		Amplitude	3.05 m		

Darstellung der letzten 12 Jahre



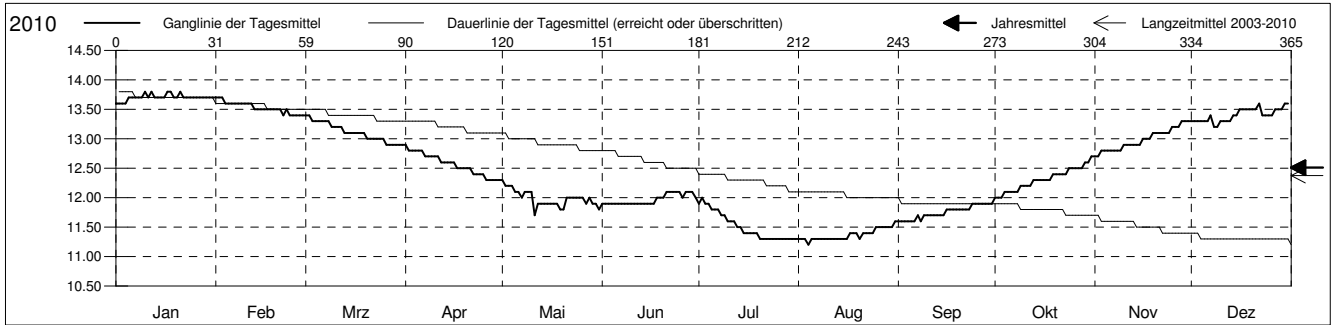
Grundwassertemperatur



Ergolzthal
 Füllinsdorf 35.J.07 Tennishalle
 Abstichpunkt: 288.50 m ü.M.
 OK Terrain: 287.81 m ü.M.

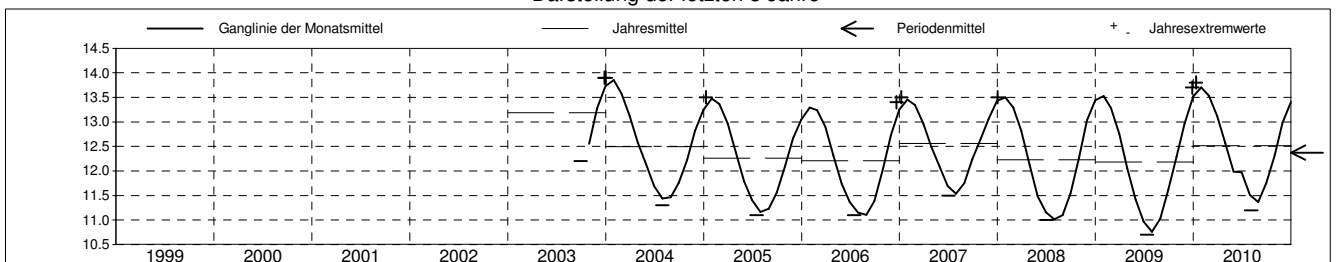
Amt für Umweltschutz und Energie
Kanton Basel-Landschaft
 Koordinaten: 621481.75 / 262056.70

2010	Januar	Februar	März	April	Mai	Juni	Juli	August	September	Oktober	November	Dezember	
1	13.6 -	13.7 +	13.4 +	12.9 +	12.3 +	11.9 -	11.9	11.3	11.6 -	12.0 -	12.7 -	13.3	1
2	13.6 -	13.7 +	13.4 +	12.8	12.2	11.9 -	12.0 +	11.3	11.6 -	12.0 -	12.7 -	13.3	2
3	13.6 -	13.7 +	13.3	12.8	12.2	11.9 -	11.9	11.3	11.6 -	12.0 -	12.8	13.3	3
4	13.6 -	13.6	13.3	12.8	12.2	11.9 -	11.9	11.2 -	11.6 -	12.1	12.8	13.3	4
5	13.7	13.6	13.3	12.8	12.1	11.9 -	11.8	11.3	11.6 -	12.1	12.8	13.3	5
6	13.7	13.6	13.3	12.8	12.1	11.9 -	11.8	11.3	11.6 -	12.1	12.8	13.3	6
7	13.7	13.6	13.3	12.7	12.0	11.9 -	11.8	11.3	11.7	12.1	12.8	13.4	7
8	13.7	13.6	13.3	12.7	12.1	11.9 -	11.7	11.3	11.6 -	12.1	12.8	13.2 -	8
9	13.7	13.6	13.2	12.7	12.1	11.9 -	11.7	11.3	11.7	12.2	12.8	13.2 -	9
10	13.8 +	13.6	13.2	12.7	12.1	11.9 -	11.6	11.3	11.7	12.2	12.9	13.3	10
11	13.7	13.6	13.2	12.7	11.7 -	11.9 -	11.6	11.3	11.7	12.2	12.9	13.3	11
12	13.8 +	13.6	13.2	12.6	11.9	11.9 -	11.6	11.3	11.7	12.2	12.9	13.3	12
13	13.7	13.5	13.1	12.6	11.9	11.9 -	11.5	11.3	11.7	12.3	12.9	13.3	13
14	13.7	13.5	13.1	12.6	11.9	11.9 -	11.5	11.3	11.7	12.3	12.9	13.4	14
15	13.7	13.5	13.1	12.6	11.9	11.9 -	11.4	11.3	11.7	12.3	12.9	13.4	15
16	13.7	13.5	13.1	12.6	11.9	11.9 -	11.4	11.3	11.8	12.3	13.0	13.5	16
17	13.8 +	13.5	13.1	12.5	11.9	11.9 -	11.4	11.4	11.8	12.3	13.0	13.5	17
18	13.8 +	13.5	13.1	12.5	11.9	12.0	11.4	11.4	11.8	12.3	13.0	13.5	18
19	13.7	13.5	13.1	12.5	11.8	12.0	11.4	11.4	11.8	12.4	13.1	13.5	19
20	13.7	13.5	13.0	12.5	11.8	12.0	11.3 -	11.3	11.8	12.4	13.1	13.5	20
21	13.8 +	13.5	13.0	12.5	12.0	12.1 +	11.3 -	11.4	11.8	12.4	13.1	13.5	21
22	13.7	13.4 -	13.0	12.4	12.0	12.1 +	11.3 -	11.4	11.8	12.4	13.1	13.6 +	22
23	13.7	13.5	13.0	12.4	12.0	12.1 +	11.3 -	11.4	11.8	12.4	13.1	13.4	23
24	13.7	13.4 -	13.0	12.4	12.0	12.1 +	11.3 -	11.4	11.9 +	12.5	13.1	13.4	24
25	13.7	13.4 -	13.0	12.4	12.0	12.1 +	11.3 -	11.5	11.9 +	12.5	13.2	13.4	25
26	13.7	13.4 -	12.9 -	12.3 -	12.0	12.0	11.3 -	11.5	11.9 +	12.5	13.2	13.4	26
27	13.7	13.4 -	12.9 -	12.3 -	11.9	12.1 +	11.3 -	11.5	11.9 +	12.5	13.2	13.5	27
28	13.7	13.4 -	12.9 -	12.3 -	12.0	12.1 +	11.3 -	11.5	11.9 +	12.5	13.3 +	13.5	28
29	13.7	13.4 -	12.9 -	12.3 -	11.9	12.1 +	11.3 -	11.5	11.9 +	12.6	13.3 +	13.5	29
30	13.7	13.4 -	12.9 -	12.3 -	11.9	12.0	11.3 -	11.5	11.9 +	12.6	13.3 +	13.6 +	30
31	13.7	13.4 -	12.9 -	12.3 -	11.8	12.0	11.3 -	11.6 +	11.9 +	12.7 +	13.3 +	13.6 +	31
Monatsmittel	13.7 +	13.5	13.1	12.6	12.0	12.0	11.5	11.4 -	11.8	12.3	13.0	13.4	
Maximum	13.8 +	13.7	13.4	12.9	12.3	12.1	12.0	11.6 -	11.9	12.7	13.3	13.6	
Datum	10.01	01.02	01.03	01.04	01.05	21.06	02.07	31.08	24.09	31.10	28.11	22.12	
Minimum	13.6 +	13.4	12.9	12.3	11.7	11.9	11.3	11.2 -	11.6	12.0	12.7	13.2	
Datum	01.01	22.02	26.03	26.04	11.05	01.06	20.07	04.08	01.09	01.10	01.11	08.12	
Amplitude	0.2	0.3	0.5	0.6	0.6	0.2	0.7	0.4	0.3	0.7	0.6	0.4	
Jahr 2010	Mittel	12.5 °C		Maximum	13.8 (10.Jan)		Minimum	11.2 (04.Aug)		Amplitude	2.6 °C		



Periode	2003 - 2010												
Monatsmittel	13.5 +	13.4	12.9	12.4	11.8	11.5	11.2 -	11.3	11.7	12.3	12.9	13.4	
Maximum	13.9 +	13.8	13.4	12.9	12.4	12.1	12.0 -	12.0 -	12.4	13.0	13.5	13.9 +	
Jahr	2004	2004	2004	2010	2004	2010	2010	2007	2007	2003	2003	2003	
Minimum	13.2 +	13.1	12.4	11.7	11.2	10.8	10.7 -	10.8	11.2	11.6	12.4	12.9	
Jahr	2006	2006	2009	2009	2009	2009	2009	2009	2006	2006	2005	2005	
Amplitude	0.2 -	0.4	0.7	0.7	0.6	0.4	0.7	0.5	0.6	0.8 +	0.7	0.4	
Jahr	2004	2004	2009	2008	2010	2006	2010	2009	2008	2003	2008	2010	
Periode	Mittel	12.4 °C		Maximum	13.9 (27.Dez 2003)		Minimum	10.7 (11.Jul 2009)		Amplitude	3.2 °C		

Darstellung der letzten 8 Jahre



Grundwasserspiegel im Ergolztal

Station 35.J.7
OP 165573

Füllinsdorf

Tennishalle

Koordinaten: 621'481.72 / 262'056.70

Messwerte: Grundwasserspiegel
Temperatur

