

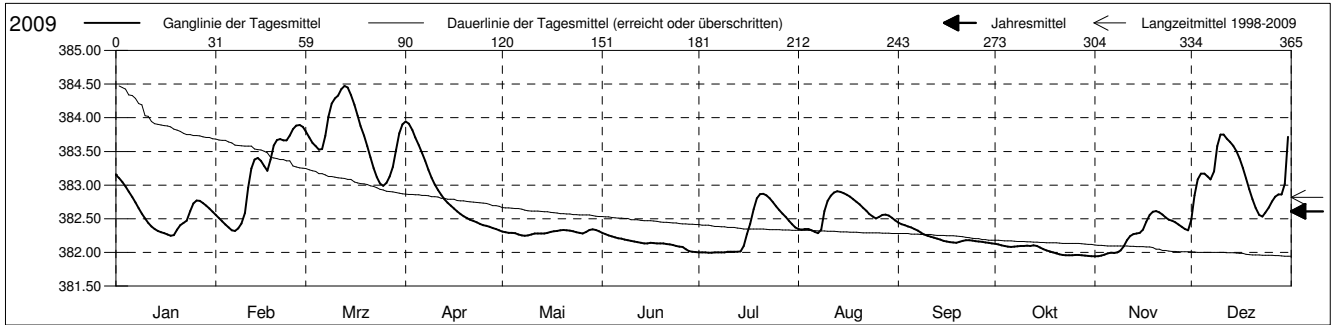
**Grundwasserstände**



Frenketal  
 Bubendorf 33.J.2 St. Lampenberg  
 Abstichpunkt: 391.83 m ü.M.  
 OK Terrain: 390.71 m ü.M.

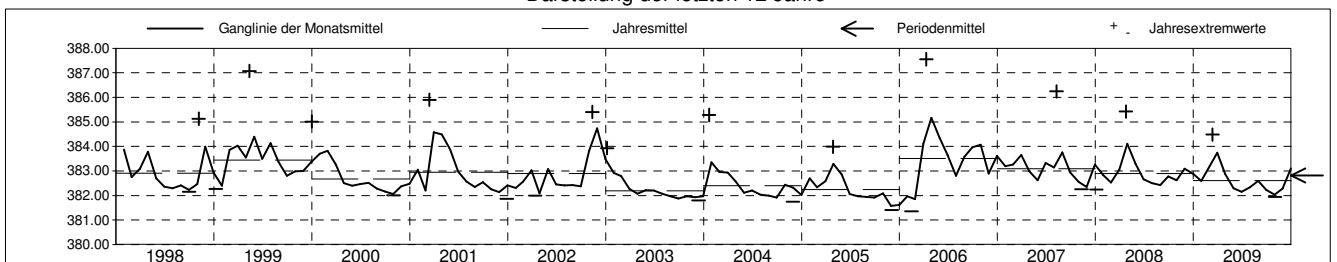
**Amt für Umweltschutz und Energie**  
**Kanton Basel-Landschaft**  
 Koordinaten: 624098.56 / 254629.44

2009	Januar	Februar	März	April	Mai	Juni	Juli	August	September	Oktober	November	Dezember	
1	383.15 +	382.56	383.80	383.95 +	382.31	382.29 +	382.00	382.35	382.44 +	382.13 +	381.94 -	382.48 -	1
2	383.10	382.51	383.71	383.91	382.30	382.27	382.00	382.34	382.42	382.12	381.94 -	382.84	2
3	383.05	382.46	383.63	383.82	382.29	382.25	382.00	382.34	382.40	382.11	381.95	383.09	3
4	382.98	382.41	383.58	383.71	382.29	382.24	382.00	382.34	382.38	382.10	381.97	383.17	4
5	382.90	382.37	383.53	383.59	382.28	382.22	381.99 -	382.33	382.37	382.09	381.99	383.17	5
Tagesmittel													
6	382.82	382.33	383.54	383.48	382.27	382.21	382.00	382.30	382.35	382.08	382.00	383.13	6
7	382.74	382.32 -	383.73	383.36	382.25 -	382.20	382.00	382.28 -	382.32	382.09	381.99	383.08	7
8	382.66	382.36	384.02	383.23	382.25 -	382.19	382.00	382.34	382.30	382.09	382.00	383.20	8
9	382.58	382.43	384.21	383.11	382.25 -	382.18	382.00	382.61	382.27	382.10	382.03	383.58	9
10	382.50	382.59	384.29	383.01	382.27	382.17	382.01	382.77	382.25	382.10	382.09	383.75 +	10
11	382.44	382.96	384.33	382.93	382.28	382.16	382.01	382.84	382.23	382.10	382.18	383.75 +	11
12	382.38	383.24	384.42	382.85	382.28	382.15	382.01	382.89	382.22	382.10	382.24	383.69	12
13	382.35	383.38	384.48 +	382.79	382.28	382.14	382.01	382.91 +	382.20	382.10	382.27	383.64	13
14	382.32	383.40	384.45 +	382.74	382.28	382.14	382.01	382.90	382.19	382.09	382.28	383.58	14
Max. +	382.30	383.36	384.34	382.69	382.29	382.13	382.09	382.88	382.17	382.07	382.29	383.50	15
16	382.29	383.28	384.19	382.65	382.30	382.14	382.27	382.85	382.16	382.05	382.34	383.39	16
17	382.26	383.21	384.03	382.61	382.32	382.14	382.42	382.83	382.15	382.03	382.45	383.25	17
18	382.25 -	383.38	383.88	382.57	382.32	382.13	382.64	382.79	382.15	382.02	382.56	383.10	18
19	382.26	383.59	383.74	382.54	382.33	382.13	382.80	382.75	382.14	382.00	382.61 +	382.94	19
Min. -	382.34	383.67	383.58	382.51	382.33	382.13	382.87 +	382.71	382.16	381.99	382.61 +	382.79	20
21	382.40	383.68	383.41	382.49	382.33	382.12	382.87 +	382.66	382.17	381.97	382.59	382.66	21
22	382.44	383.66	383.25	382.47	382.32	382.12	382.85	382.62	382.18	381.96	382.56	382.56	22
23	382.47	383.66	383.12	382.45	382.31	382.11	382.80	382.57	382.18	381.96	382.52	382.53	23
24	382.61	383.74	383.02	382.42	382.30	382.09	382.75	382.53	382.17	381.96	382.49	382.59	24
25	382.73	383.83	382.99 -	382.40	382.29	382.08	382.68	382.50	382.17	381.96	382.47	382.67	25
26	382.77	383.88	383.03	382.39	382.28	382.08	382.63	382.53	382.16	381.96	382.44	382.76	26
27	382.76	383.89 +	383.13	382.38	382.30	382.05	382.58	382.56	382.16	381.96	382.41	382.83	27
28	382.73	383.86	383.27	382.36	382.33	382.02	382.53	382.56	382.15	381.96	382.38	382.86	28
29	382.69		383.52	382.34	382.34 +	382.01 -	382.47	382.55	382.14	381.95	382.35	382.86	29
30	382.65		383.77	382.33 -	382.33	382.01 -	382.42	382.51	382.13 -	381.95	382.33	383.02	30
31	382.60		383.90		382.31		382.37	382.48		381.94 -		383.72	31
Monatsmittel	382.60	383.14	383.74 +	382.87	382.30	382.14	382.32	382.59	382.23	382.03 -	382.28	383.10	
Maximum	383.18	383.90	384.48 +	383.95	382.35	382.30	382.88	382.91	382.46	382.13 -	382.62	384.20	
Datum	01.01	27.02	13.03	01.04	29.05	01.06	20.07	13.08	01.09	01.10	19.11	31.12	
Amplitude	0.94	1.58	1.50	1.63	0.10	0.30	0.88	0.64	0.33	0.19	0.68	1.85	
Jahr 2009	Mittel	382.61 m ü.M.		Maximum	384.48 (13.Mrz)		Minimum	381.94 (01.Nov)			Amplitude	2.54 m	



Periode	1998 - 2009												
Monatsmittel	382.91	382.84	383.36 +	383.29	383.02	382.66	382.56	382.59	382.48 -	382.61	382.72	382.76	
Maximum	385.28	387.00	385.90	387.55 +	387.07	384.40 -	386.18	386.24	386.31	385.39	385.40	385.47	
Jahr	2004	1999	2001	2006 +	1999	2006	1999	2007	2006	2006	2002	1999	
Minimum	381.66	381.35 -	381.82	381.99 +	381.97	381.85	381.81	381.78	381.78	381.70	381.40	381.40	
Jahr	2006	2006	2005	2002	2004	2005	2005	2005	2005	2005	2005	2005	
Amplitude	3.51	4.39 +	3.95	3.27	3.98	1.69 -	3.27	3.57	3.47	2.71	2.43	3.07	
Jahr	2004	1999	2001	2006	1999	2007	1999	2007	2006	2004	2008	1999	
Periode	Mittel	382.82 m ü.M.		Maximum	387.55 (11.Apr 2006)		Minimum	381.35 (14.Feb 2006)			Amplitude	6.20 m	

Darstellung der letzten 12 Jahre



**Grundwassertemperatur**



Frenketal

Bubendorf

Abstichpunkt:

OK Terrain:

33.J.2

391.83

390.71

St. Lampenberg

m ü.M.

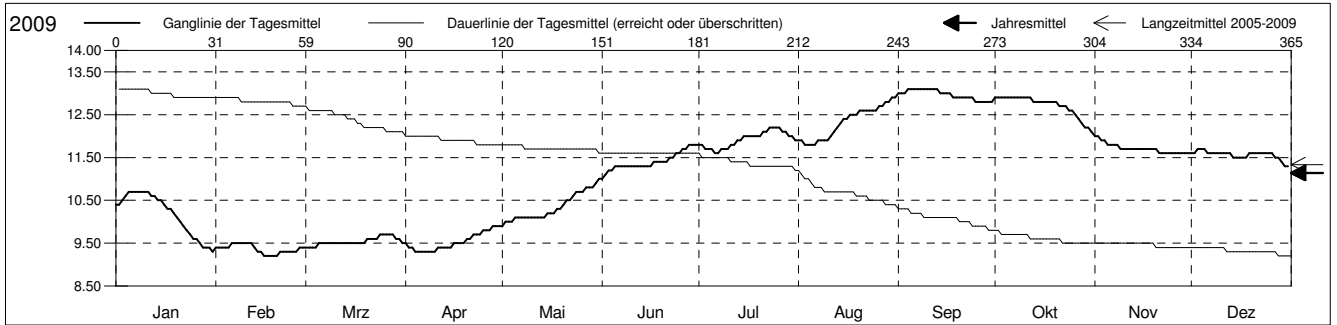
m ü.M.

**Amt für Umweltschutz und Energie**

**Kanton Basel-Landschaft**

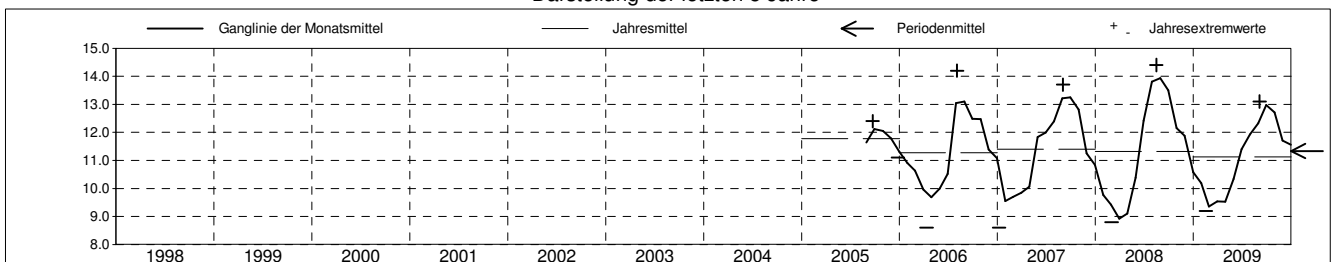
Koordinaten: 624098.56 / 254629.44

2009	Januar	Februar	März	April	Mai	Juni	Juli	August	September	Oktober	November	Dezember	
1	10.4	9.4	9.4 -	9.5	9.9 -	11.0 -	11.8	11.9	13.0	12.9 +	12.0 +	11.6	1
2	10.4	9.4	9.4 -	9.4	10.0	11.1	11.8	11.9	13.0	12.9 +	12.0 +	11.6	2
3	10.5	9.4	9.4 -	9.4	10.0	11.2	11.7	11.8 -	13.0	12.9 +	11.9	11.7 +	3
4	10.6	9.4	9.4 -	9.3 -	10.0	11.2	11.7	11.8 -	13.1 +	12.9 +	11.9	11.7 +	4
5	10.7 +	9.4	9.5	9.3 -	10.1	11.3	11.7	11.8 -	13.1 +	12.9 +	11.8	11.7 +	5
Tagesmittel													
6	10.7 +	9.5 +	9.5	9.3 -	10.1	11.3	11.6 -	11.8 -	13.1 +	12.9 +	11.8	11.6	6
7	10.7 +	9.5 +	9.5	9.3 -	10.1	11.3	11.6 -	11.9	13.1 +	12.9 +	11.8	11.6	7
8	10.7 +	9.5 +	9.5	9.3 -	10.1	11.3	11.7	11.9	13.1 +	12.9 +	11.8	11.6	8
9	10.7 +	9.5 +	9.5	9.3 -	10.1	11.3	11.7	11.9	13.1 +	12.9 +	11.7	11.6	9
10	10.7 +	9.5 +	9.5	9.3 -	10.1	11.3	11.7	11.9	13.1 +	12.9 +	11.7	11.6	10
11	10.7 +	9.5 +	9.5	9.4	10.1	11.3	11.8	12.0	13.1 +	12.9 +	11.7	11.6	11
12	10.6	9.5 +	9.5	9.4	10.1	11.3	11.8	12.1	13.1 +	12.9 +	11.7	11.6	12
13	10.6	9.4	9.5	9.4	10.1	11.3	11.9	12.2	13.1 +	12.8	11.7	11.6	13
14	10.5	9.3	9.5	9.4	10.1	11.3	11.9	12.3	13.0	12.8	11.7	11.5	14
15	10.5	9.3	9.5	9.4	10.2	11.3	12.0	12.4	13.0	12.8	11.7	11.5	15
Max. +													
16	10.4	9.2 -	9.5	9.5	10.2	11.3	12.0	12.4	13.0	12.8	11.7	11.5	16
17	10.3	9.2 -	9.5	9.5	10.2	11.4	12.0	12.5	13.0	12.8	11.7	11.5	17
18	10.3	9.2 -	9.5	9.5	10.3	11.4	12.0	12.5	12.9	12.8	11.7	11.5	18
19	10.2	9.2 -	9.5	9.5	10.3	11.4	12.0	12.5	12.9	12.8	11.7	11.6	19
20	10.1	9.2 -	9.6	9.6	10.4	11.4	12.0	12.6	12.9	12.8	11.7	11.6	20
Min. -													
21	10.0	9.3	9.6	9.6	10.5	11.4	12.1	12.6	12.9	12.7	11.6 -	11.6	21
22	9.9	9.3	9.6	9.7	10.5	11.5	12.1	12.6	12.9	12.7	11.6 -	11.6	22
23	9.8	9.3	9.6	9.7	10.6	11.5	12.2 +	12.6	12.9	12.7	11.6 -	11.6	23
24	9.7	9.3	9.7 +	9.7	10.7	11.6	12.2 +	12.6	12.9	12.6	11.6 -	11.6	24
25	9.6	9.3	9.7 +	9.8	10.7	11.6	12.2 +	12.6	12.8 -	12.6	11.6 -	11.6	25
26	9.6	9.3	9.7 +	9.8	10.7	11.7	12.2 +	12.7	12.8 -	12.5	11.6 -	11.6	26
27	9.5	9.4	9.7 +	9.8	10.8	11.7	12.1	12.7	12.8 -	12.4	11.6 -	11.5	27
28	9.4	9.4	9.7 +	9.9 +	10.8	11.8 +	12.1	12.8	12.8 -	12.3	11.6 -	11.5	28
29	9.4	9.6	9.9 +	9.9 +	10.8	11.8 +	12.0	12.8	12.8 -	12.2	11.6 -	11.4	29
30	9.4	9.6	9.9 +	9.9 +	10.9	11.8 +	12.0	12.9 +	12.8 -	12.2	11.6 -	11.3 -	30
31	9.3 -	9.5	9.5	11.0 +	11.0 +	11.9	12.9 +	12.9 +	12.1 -	11.3 -	11.3 -	11.3 -	31
Monatsmittel	10.2	9.4 -	9.5	9.5	10.3	11.4	11.9	12.3	13.0 +	12.7	11.7	11.6	
Maximum	10.7	9.5 -	9.7	9.9	11.0	11.8	12.2	12.9	13.1 +	12.9	12.0	11.7	
Datum	05.01	06.02	24.03	28.04	31.05	28.06	23.07	30.08	04.09	01.10	01.11	03.12	
Minimum	9.3	9.2 -	9.4	9.3	9.9	11.0	11.6	11.8	12.8 +	12.1	11.6	11.3	
Datum	31.01	16.02	01.03	04.04	01.05	01.06	06.07	03.08	25.09	31.10	21.11	30.12	
Amplitude	1.4	0.3	0.3	0.6	1.1	0.8	0.6	1.1	0.3	0.8	0.4	0.4	
Jahr 2009	Mittel	11.1 °C		Maximum	13.1 (04.Sep)		Minimum	9.2 (16.Feb)		Amplitude	3.9 °C		



Periode	2005 - 2009												
Monatsmittel	10.1	9.8	9.6 -	9.6 -	10.6	11.6	12.8	12.8	12.9 +	12.4	11.6	11.1	
Maximum	11.1	10.8	10.2 -	11.1	12.1	12.9	14.3	14.4 +	13.9	13.1	12.6	11.7	
Jahr	2006	2006	2006	2007	2007	2008	2008	2008	2008	2007	2006	2005	
Minimum	8.6 -	8.9	8.8	8.6 -	9.3	10.0	11.2	11.3	11.8 +	11.8 +	10.6	9.5	
Jahr	2007	2008	2008	2006	2008	2006	2005	2005	2005	2005	2006	2007	
Amplitude	1.8	0.9	0.7 -	1.8	2.1 +	1.9	2.0	2.0	1.5	1.0	2.0	2.0	
Jahr	2007	2007	2007	2007	2008	2006	2006	2006	2008	2007	2006	2006	
Periode	Mittel	11.3 °C		Maximum	14.4 (15.Aug 2008)		Minimum	8.6 (11.Apr 2006)		Amplitude	5.8 °C		

Darstellung der letzten 5 Jahre



# Grundwasserspiegel im Frenketal

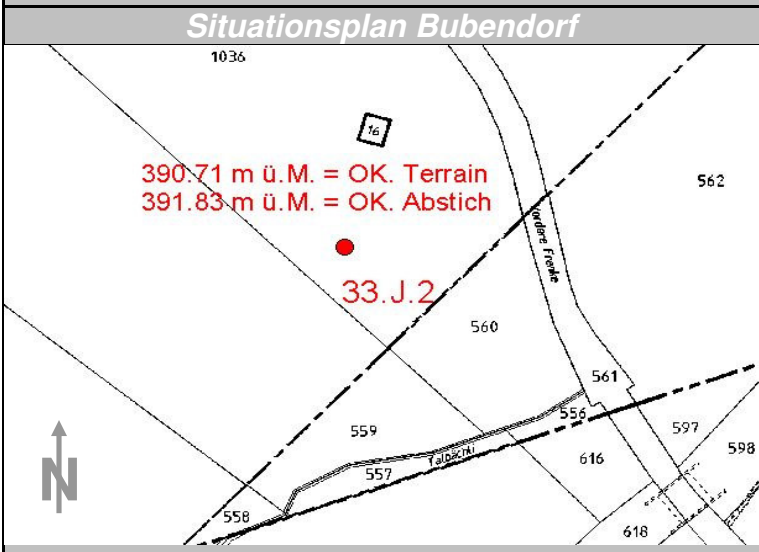
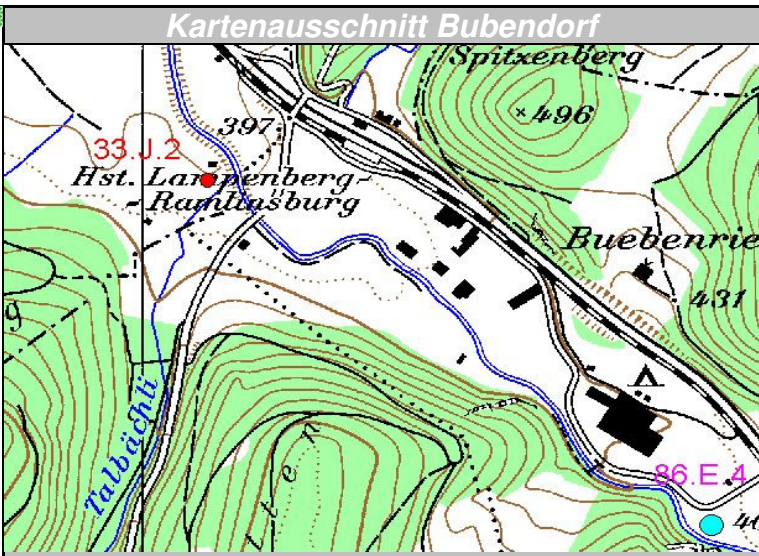
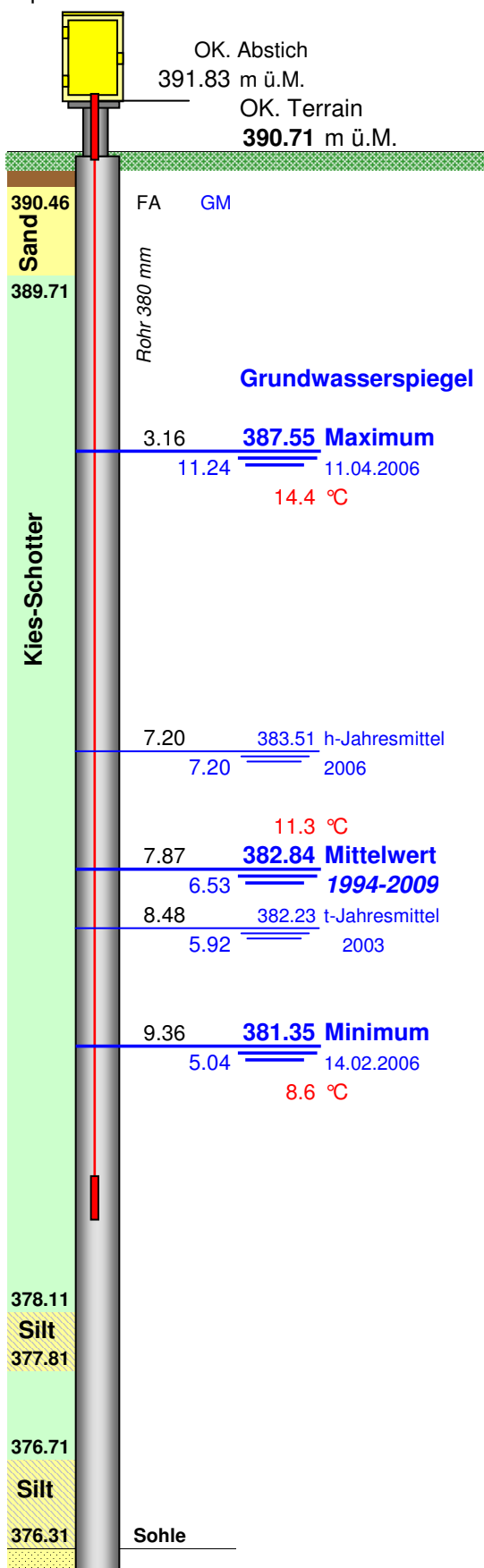
Station 33.J.2 Bubendorf

Opm 201353

Station Lampenberg

Koordinaten: 624'098.58 / 254'629.44

Messwerte: **Grundwasserspiegel**  
**Temperatur**



375.01 UK. Sondierung  
**Callovien (Mergel)** FA= Flurabstände GM= Grundwassermächtigkeit in m