

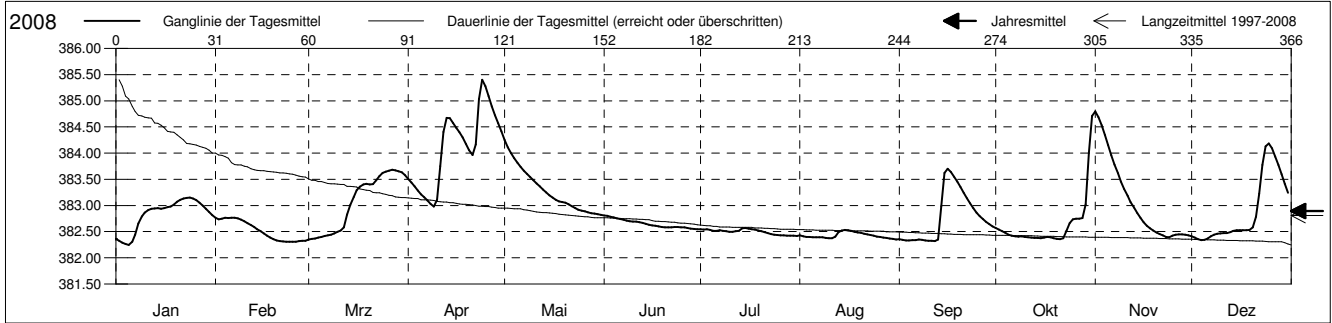
Grundwasserstände



Frenketal  
 Bubendorf 33.J.2 St. Lampenberg  
 Abstichpunkt: 391.83 m ü.M.  
 OK Terrain: 390.71 m ü.M.

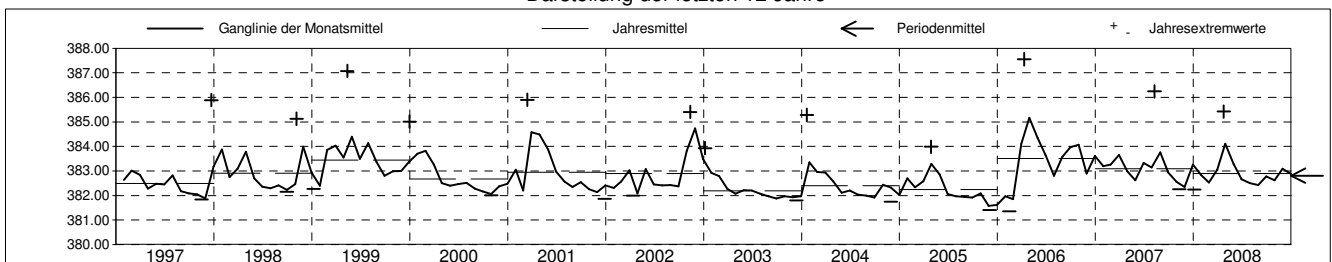
Amt für Umweltschutz und Energie  
 Kanton Basel-Landschaft  
 Koordinaten: 624098.56 / 254629.44

2008	Januar	Februar	März	April	Mai	Juni	Juli	August	September	Oktober	November	Dezember	
1	382.36	382.77 +	382.35 -	383.50	384.25 +	382.81 +	382.54	382.43	382.36	382.57	384.80 +	382.41	1
2	382.32	382.74	382.36	383.44	384.12	382.80	382.54	382.41	382.34	382.54	384.69	382.39	2
3	382.29	382.75	382.37	383.37	384.00	382.79	382.54	382.40	382.33	382.51	384.53	382.36	3
4	382.26	382.77 +	382.39	383.28	383.91	382.77	382.53	382.40	382.33	382.48	384.35	382.34 -	4
5	382.24 -	382.76	382.40	383.21	383.82	382.76	382.52	382.39	382.34	382.44	384.15	382.34 -	5
Tagesmittel													
6	382.31	382.77 +	382.42	383.16	383.74	382.74	382.51	382.39	382.34	382.42	383.96	382.37	6
7	382.44	382.77 +	382.43	383.09	383.67	382.73	382.53	382.39	382.35	382.41	383.78	382.41	7
8	382.66	382.75	382.45	383.03	383.60	382.71	382.52	382.39	382.34	382.41	383.61	382.44	8
9	382.79	382.73	382.47	382.98 -	383.54	382.70	382.51	382.38	382.33	382.41	383.46	382.46	9
10	382.86	382.70	382.49	383.11	383.48	382.69	382.50	382.38	382.33	382.40	383.32	382.47	10
11	382.91	382.66	382.52	383.75	383.42	382.69	382.50	382.37	382.32 -	382.39	383.19	382.47	11
12	382.94	382.63	382.58	384.41	383.36	382.68	382.51	382.41	382.32 -	382.38	383.07	382.48	12
13	382.95	382.59	382.83	384.67	383.30	382.67	382.52	382.49	382.35	382.38	382.96	382.49	13
14	382.95	382.55	383.01	384.67	383.25	382.65	382.57 +	382.52	382.99	382.38	382.86	382.52	14
15	382.94	382.51	383.17	384.57	383.20	382.63	382.57 +	382.53 +	383.62	382.38	382.77	382.53	15
Max. +													
16	382.95	382.47	383.29	384.48	383.15	382.62	382.56	382.53 +	383.70 +	382.38	382.68	382.53	16
17	382.97	382.43	383.36	384.40	383.11	382.61	382.55	382.52	383.64	382.40	382.61	382.53	17
18	382.98	382.39	383.40	384.30	383.08	382.60	382.54	382.50	383.55	382.39	382.56	382.53	18
19	383.02	382.36	383.42	384.18	383.06	382.59	382.52	382.49	383.45	382.37	382.52	382.53	19
20	383.07	382.33	383.40	384.06	383.05	382.58	382.51	382.48	383.35	382.36 -	382.49	382.58	20
Min. -													
21	383.11	382.32	383.41	383.96	383.02	382.58	382.49	382.46	383.25	382.36 -	382.46	382.78	21
22	383.13	382.31 -	383.48	384.17	382.98	382.58	382.47	382.45	383.14	382.38	382.43	383.23	22
23	383.15 +	382.31 -	383.56	385.03	382.95	382.59	382.45	382.43	383.04	382.52	382.40	383.78	23
24	383.15 +	382.31 -	383.62	385.40 +	382.92	382.59	382.44	382.42	382.95	382.66	382.39 -	384.13	24
25	383.13	382.31 -	383.65	385.28	382.90	382.58	382.43	382.41	382.87	382.74	382.42	384.19 +	25
26	383.10	382.31 -	383.67	385.09	382.89	382.58	382.43	382.40	382.80	382.75	382.44	384.09	26
27	383.05	382.32	383.69 +	384.90	382.87	382.57	382.43	382.39	382.74	382.75	382.45	383.94	27
28	383.00	382.32	383.67	384.72	382.85	382.56	382.43	382.38	382.69	382.76	382.45	383.77	28
29	382.94	382.33	383.65	384.57	382.84	382.55 -	382.42 -	382.37	382.64	383.02	382.44	383.60	29
30	382.88		383.63	384.42	382.83	382.55 -	382.42 -	382.36	382.60	384.00	382.43	383.42	30
31	382.82		383.58		382.82 -		382.42 -	382.35 -		384.71 +		383.25	31
Monatsmittel	382.83	382.53	383.06	384.11 +	383.29	382.65	382.50	382.43 -	382.78	382.61	383.09	382.88	
Maximum	383.16	382.79	383.69	385.42 +	384.33	382.82	382.58	382.54 -	383.71	384.82	384.82	384.20	
Datum	24.01	01.02	27.03	24.04	01.05	01.06	14.07	15.08	16.09	31.10	01.11	25.12	
Amplitude	0.92	0.48	1.35	2.46	1.51	0.27	0.16	0.19	1.39	2.46	2.43	1.87	
Jahr 2008	Mittel	382.89 m ü.M.		Maximum	385.42 (24.Apr)		Minimum	382.24 (05.Jan)		Amplitude	3.18 m		



Periode	1997 - 2008												
Monatsmittel	382.91	382.83	383.29 +	383.24	383.03	382.69	382.60	382.55	382.46 -	382.61	382.69	382.77	
Maximum	385.28	387.00	385.90	387.55 +	387.07	384.40 -	386.18	386.24	386.31	385.39	385.40	385.89	
Jahr	2004	1999	2001	2006 +	1999	2006	1999	2007	2006	2006	2002	1997	
Minimum	381.66	381.35 -	381.82	381.99 +	381.97	381.85	381.81	381.78	381.78	381.70	381.40	381.40	
Jahr	2006	2006	2005	2002	2004	2005	2005	2005	2005	2005	2005	2005	
Amplitude	3.51	4.39 +	3.95	3.27	3.98	1.69 -	3.27	3.57	3.47	2.71	2.43	4.00	
Jahr	2004	1999	2001	2006	1999	2007	1999	2007	2006	2004	2008	1997	
Periode	Mittel	382.81 m ü.M.		Maximum	387.55 (11.Apr 2006)		Minimum	381.35 (14.Feb 2006)		Amplitude	6.20 m		

Darstellung der letzten 12 Jahre



**Grundwassertemperatur**



Frenketal

Bubendorf

Abstichpunkt:

OK Terrain:

33.J.2

391.83

390.71

St. Lampenberg

m ü.M.

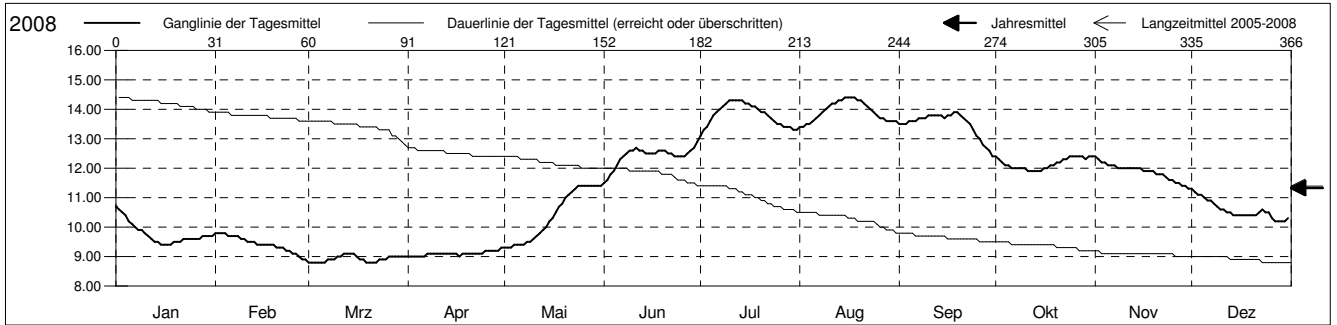
m ü.M.

**Amt für Umweltschutz und Energie**

**Kanton Basel-Landschaft**

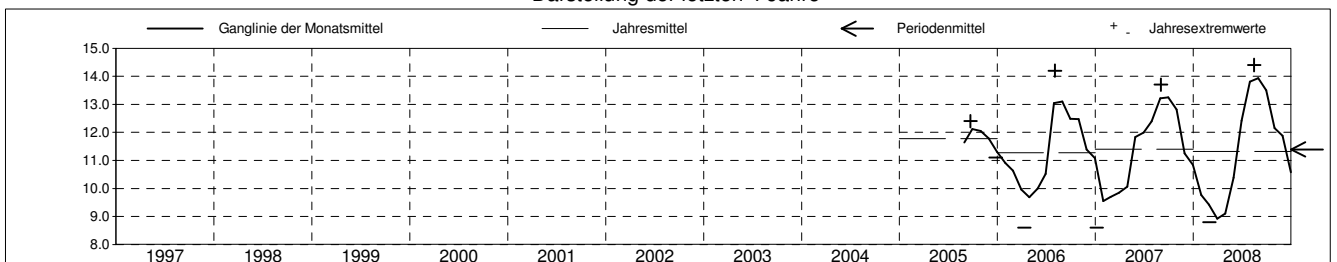
Koordinaten: 624098.56 / 254629.44

2008	Januar	Februar	März	April	Mai	Juni	Juli	August	September	Oktober	November	Dezember	
1	10.7 +	9.8 +	8.8 -	9.0 -	9.3 -	11.5 -	13.1 -	13.4 -	13.5	12.4 +	12.4 +	11.3 +	1
2	10.6	9.8 +	8.8 -	9.0 -	9.3 -	11.6	13.3	13.4 -	13.5	12.3	12.3	11.2	2
3	10.5	9.8 +	8.8 -	9.0 -	9.3 -	11.8	13.4	13.5	13.5	12.2	12.2	11.1	3
4	10.4	9.8 +	8.8 -	9.0 -	9.4	11.9	13.6	13.5	13.6	12.1	12.2	11.1	4
5	10.2	9.7	8.8 -	9.0 -	9.4	12.1	13.8	13.6	13.6	12.1	12.1	11.0	5
6	10.1	9.7	8.8 -	9.0 -	9.4	12.3	13.9	13.7	13.6	12.0	12.1	10.9	6
7	10.0	9.7	8.9	9.1	9.4	12.4	14.0	13.8	13.7	12.0	12.1	10.9	7
8	9.9	9.7	8.9	9.1	9.5	12.5	14.1	13.9	13.7	12.0	12.0	10.8	8
9	9.9	9.6	8.9	9.1	9.5	12.6	14.2	14.0	13.7	12.0	12.0	10.7	9
10	9.8	9.6	9.0	9.1	9.6	12.6	14.3 +	14.1	13.8	12.0	12.0	10.6	10
11	9.7	9.5	9.0	9.1	9.7	12.7	14.3 +	14.2	13.8	11.9 -	12.0	10.6	11
12	9.6	9.5	9.1 +	9.1	9.8	12.6	14.3 +	14.2	13.8	11.9 -	12.0	10.5	12
13	9.5	9.5	9.1 +	9.1	9.9	12.6	14.3 +	14.3	13.8	11.9 -	12.0	10.5	13
14	9.5	9.4	9.1 +	9.1	10.0	12.5	14.3 +	14.3	13.8	11.9 -	12.0	10.4	14
15	9.4 -	9.4	9.1 +	9.1	10.2	12.5	14.2	14.4 +	13.7	11.9 -	12.0	10.4	15
16	9.4 -	9.4	9.0	9.1	10.3	12.5	14.2	14.4 +	13.8	12.0	11.9	10.4	16
17	9.4 -	9.4	8.9	9.0 -	10.5	12.5	14.1	14.4 +	13.8	12.0	11.9	10.4	17
18	9.4 -	9.4	8.9	9.1	10.7	12.6	14.1	14.4 +	13.9 +	12.1	11.9	10.4	18
19	9.5	9.4	8.8 -	9.1	10.8	12.6	14.0	14.3	13.9 +	12.1	11.9	10.4	19
20	9.5	9.3	8.8 -	9.1	11.0	12.6	13.9	14.3	13.8	12.2	11.8	10.4	20
21	9.5	9.3	8.8 -	9.1	11.1	12.5	13.9	14.2	13.7	12.2	11.8	10.4	21
22	9.6	9.3	8.8 -	9.1	11.2	12.5	13.8	14.1	13.6	12.3	11.8	10.5	22
23	9.6	9.2	8.9	9.1	11.3	12.4	13.7	14.0	13.5	12.3	11.7	10.6	23
24	9.6	9.2	8.9	9.1	11.4 +	12.4	13.6	13.9	13.3	12.4 +	11.6	10.5	24
25	9.6	9.1	8.9	9.2	11.4 +	12.4	13.5	13.8	13.1	12.4 +	11.6	10.5	25
26	9.6	9.1	9.0	9.2	11.4 +	12.4	13.5	13.7	13.0	12.4 +	11.5	10.3	26
27	9.6	9.0	9.0	9.2	11.4 +	12.5	13.4	13.7	12.8	12.4 +	11.5	10.2 -	27
28	9.7	8.9 -	9.0	9.2	11.4 +	12.6	13.4	13.6	12.7	12.4 +	11.4	10.2 -	28
29	9.7	8.9 -	9.0	9.2	11.4 +	12.7	13.4	13.6	12.6	12.3	11.4	10.2 -	29
30	9.7		9.0	9.3 +	11.4 +	12.9 +	13.3	13.6	12.4 -	12.4 +	11.3 -	10.2 -	30
31	9.7		9.0		11.4 +		13.3	13.6		12.4 +		10.3	31
Monatsmittel	9.8	9.4	8.9 -	9.1	10.4	12.4	13.8	13.9 +	13.5	12.2	11.9	10.6	
Maximum	10.7	9.8	9.1 -	9.3	11.4	12.9	14.3	14.4 +	13.9	12.4	12.4	11.3	
Datum	01.01	01.02	12.03	30.04	24.05	30.06	10.07	15.08	18.09	01.10	01.11	01.12	
Minimum	9.4	8.9	8.8 -	9.0	9.3	11.5	13.1	13.4 +	12.4	11.9	11.3	10.2	
Datum	15.01	28.02	01.03	01.04	01.05	01.06	01.07	01.08	30.09	11.10	30.11	27.12	
Amplitude	1.3	0.9	0.3	0.3	2.1	1.4	1.2	1.0	1.5	0.5	1.1	1.1	
Jahr 2008	Mittel	11.3 °C		Maximum	14.4 (15.Aug)		Minimum	8.8 (01.Mrz)		Amplitude	5.6 °C		



Periode	2005 - 2008												
Monatsmittel	10.1	9.9	9.6 -	9.6 -	10.7	11.6	13.1 +	13.0	12.8	12.4	11.6	11.0	
Maximum	11.1	10.8	10.2 -	11.1	12.1	12.9	14.3	14.4 +	13.9	13.1	12.6	11.7	
Jahr	2006	2006	2006	2007	2007	2008	2008	2008	2008	2007	2006	2005	
Minimum	8.6 -	8.9	8.8	8.6 -	9.3	10.0	11.2	11.3	11.8 +	11.8 +	10.6	9.5	
Jahr	2007	2008	2008	2006	2008	2006	2005	2005	2005	2005	2006	2007	
Amplitude	1.8	0.9	0.7 -	1.8	2.1 +	1.9	2.0	2.0	1.5	1.0	2.0	2.0	
Jahr	2007	2007	2007	2007	2008	2006	2006	2006	2008	2007	2006	2006	
Periode	Mittel	11.4 °C		Maximum	14.4 (15.Aug 2008)		Minimum	8.6 (11.Nov 2006)		Amplitude	5.8 °C		

Darstellung der letzten 4 Jahre



# Grundwasserspiegel im Frenketal

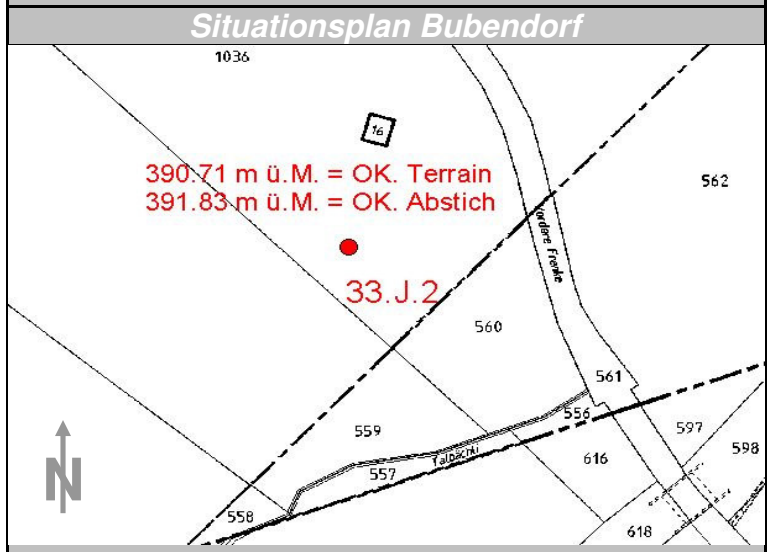
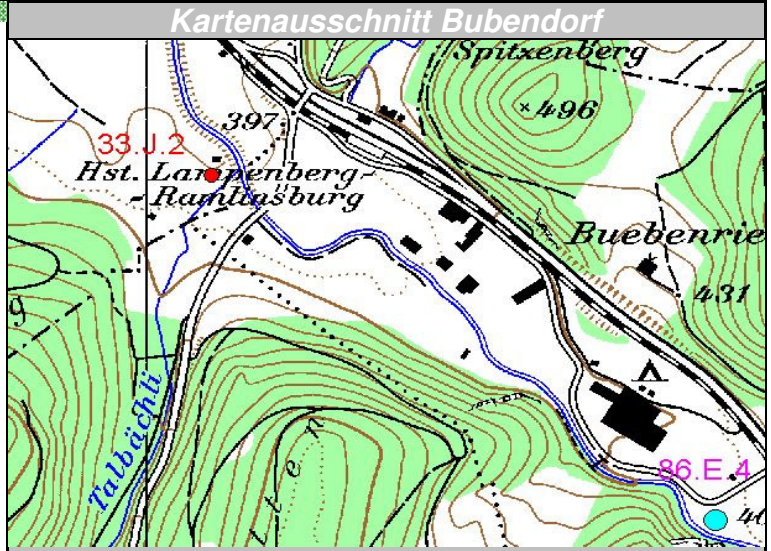
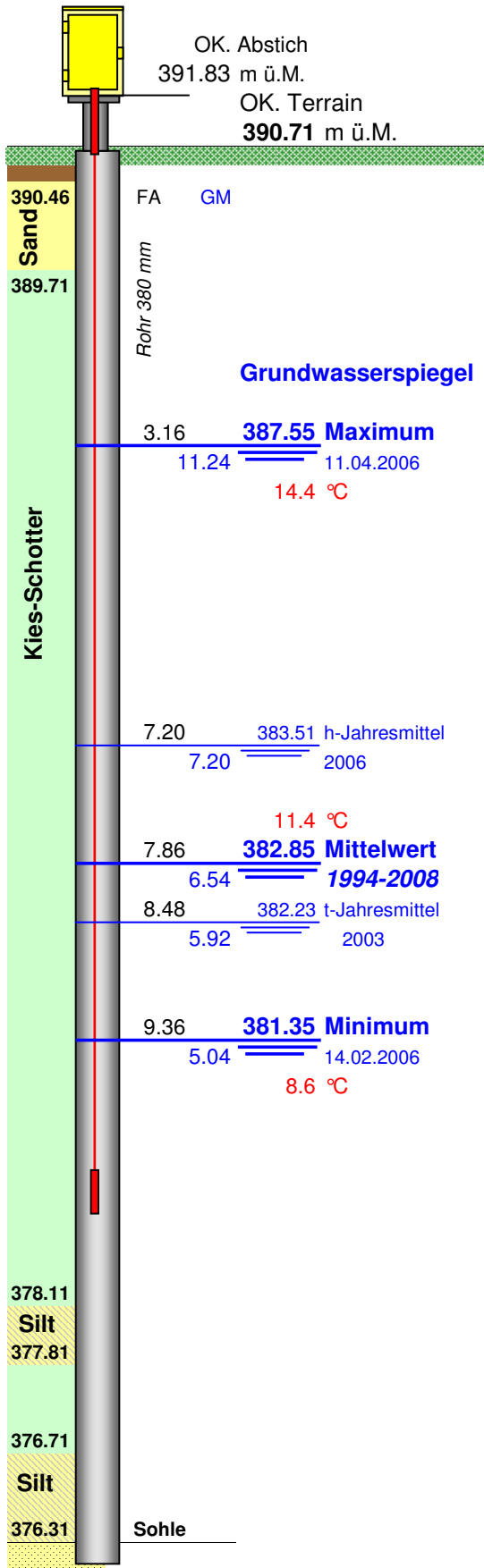
Station 33.J.2 Bubendorf

Opm 201353

Station Lampenberg

Koordinaten: 624'098.58 / 254'629.44

Messwerte: **Grundwasserspiegel**  
**Temperatur**



375.01 UK. Sondierung  
Callovien (Mergel) FA= Flurabstände GM= Grundwassermächtigkeit in m