

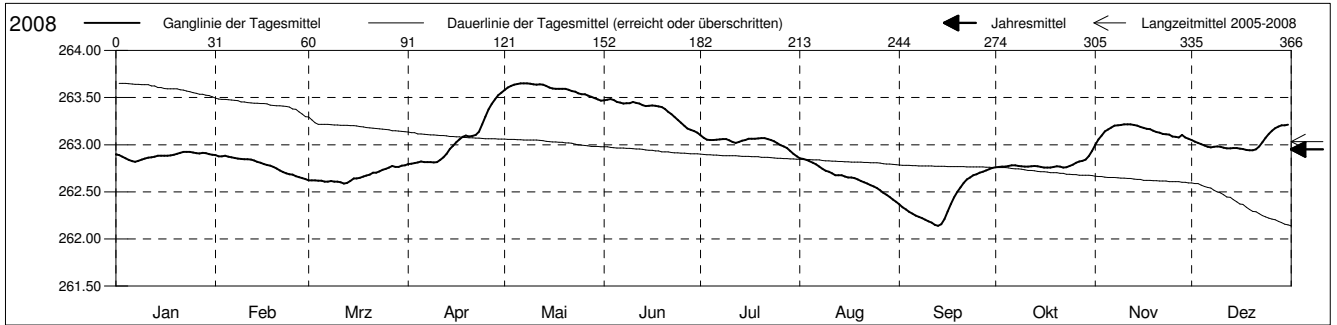
Grundwasserstände



Ergolzthal
 Pratteln 41.J.15 Löli
 Abstichpunkt: 274.58 m ü.M.
 OK Terrain: 273.73 m ü.M.

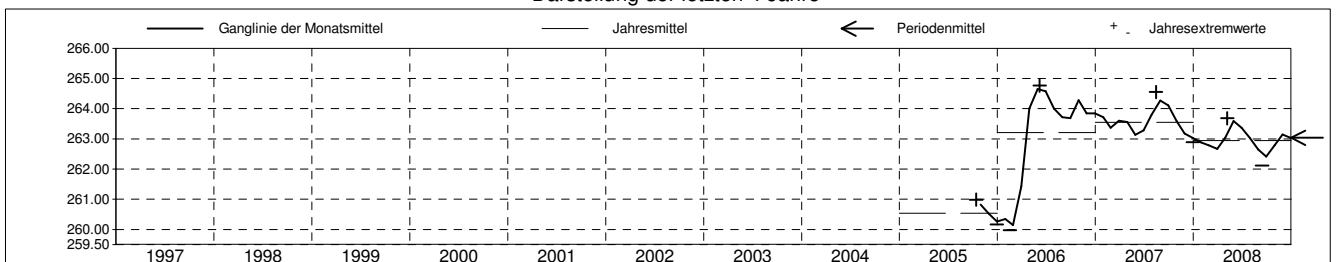
Amt für Umweltschutz und Energie
 Kanton Basel-Landschaft
 Koordinaten: 620381.38 / 263992.53

2008	Januar	Februar	März	April	Mai	Juni	Juli	August	September	Oktober	November	Dezember	
1	262.90	262.89 +	262.62	262.80 -	263.58	263.47	263.10 +	262.85 +	262.36	262.76 -	263.00 -	263.05	1
2	262.89	262.88	262.62	262.80 -	263.61	263.48 +	263.07	262.85 +	262.34	262.76 -	263.05	263.03	2
3	262.87	262.88	262.62	262.81	263.62	263.48 +	263.05	262.84	262.31	262.77	263.10	263.02	3
4	262.86	262.88	262.62	262.81	263.64	263.47	263.05	262.83	262.29	262.77	263.14	263.01	4
5	262.84	262.87	262.62	262.82	263.65 +	263.46	263.05	262.81	262.27	262.78	263.16	262.99	5
Tagesmittel													
6	262.82 -	262.87	262.61	262.81	263.65 +	263.45	263.05	262.79	262.25	262.78	263.18	262.98	6
7	262.82 -	262.86	262.61	262.81	263.65 +	263.44	263.06	262.77	262.23	262.78	263.20	262.97	7
8	262.83	262.85	262.61	262.81	263.65 +	263.44	263.06	262.74	262.22	262.78	263.21	262.98	8
9	262.84	262.85	262.61	262.81	263.65 +	263.44	263.06	262.72	262.20	262.77	263.21	262.98	9
10	262.85	262.85	262.61	262.82	263.64	263.45	263.05	262.71	262.19	262.77	263.22 +	262.98	10
11	262.86	262.85	262.60	262.84	263.64	263.44	263.03	262.70	262.17	262.77	263.22 +	262.97	11
12	262.87	262.84	262.59 -	262.86	263.64	263.44	263.02	262.68	262.15	262.77	263.21	262.96	12
13	262.87	262.83	262.59 -	262.90	263.64	263.42	263.03	262.68	262.14 -	262.77	263.21	262.96	13
14	262.88	262.82	262.62	262.95	263.62	263.41	263.04	262.67	262.16	262.77	263.20	262.96	14
15	262.88	262.81	262.64	262.99	263.61	263.41	263.05	262.66	262.21	262.76 -	263.19	262.96	15
Max. +													
16	262.88	262.79	262.64	263.03	263.60	263.42	263.06	262.65	262.29	262.76 -	263.18	262.96	16
17	262.88	262.79	262.65	263.06	263.59	263.41	263.06	262.65	262.37	262.76 -	263.17	262.96	17
18	262.89	262.78	262.66	263.08	263.59	263.41	263.06	262.65	262.44	262.76 -	263.16	262.94 -	18
19	262.89	262.76	262.67	263.10	263.59	263.40	263.06	262.63	262.50	262.76 -	263.15	262.94 -	19
20	262.90	262.75	262.68	263.09	263.59	263.38	263.07	262.62	262.55	262.77	263.13	262.94 -	20
Min. -													
21	262.91	262.73	262.70	263.09	263.58	263.35	263.07	262.60	262.59	262.77	263.13	262.95	21
22	262.92 +	262.71	262.70	263.10	263.57	263.32	263.06	262.59	262.63	262.76 -	263.11	262.98	22
23	262.92 +	262.70	262.72	263.14	263.56	263.29	263.05	262.57	262.65	262.76 -	263.11	263.03	23
24	262.92 +	262.69	262.73	263.21	263.55	263.26	263.04	262.56	262.67	262.76 -	263.11	263.07	24
25	262.92 +	262.68	262.74	263.30	263.53	263.23	263.02	262.54	262.69	262.79	263.09	263.11	25
26	262.91	262.67	262.76	263.37	263.53	263.20	262.99	262.52	262.70	262.81	263.08	263.15	26
27	262.91	262.66	262.77	263.43	263.52	263.17	262.98	262.49	262.71	262.82	263.08	263.17	27
28	262.91	262.65	262.76	263.48	263.51	263.16	262.97	262.47	262.73	262.83	263.10	263.19	28
29	262.91	262.64 -	262.76	263.52	263.49	263.14	262.93	262.45	262.74	262.84	263.07	263.20	29
30	262.90		262.78 +	263.55 +	263.48	263.13 -	262.90	262.42	262.75 +	262.88	263.06	263.21 +	30
31	262.89		262.78 +		263.47 -		262.88 -	262.39 -		262.93 +		263.21 +	31
Monatsmittel	262.88	262.79	262.67	263.04	263.59 +	263.37	263.03	262.65	262.42 -	262.78	263.14	263.03	
Maximum	262.95	262.92	262.81	263.58	263.68 +	263.51	263.13	262.88	262.78 -	262.98	263.24	263.23	
Datum	22.01	01.02	30.03	30.04	07.05	03.06	01.07	01.08	30.09	31.10	10.11	31.12	
Amplitude	0.15	0.30	0.24	0.81	0.24	0.40	0.28	0.51	0.67	0.25	0.29	0.32	
Jahr 2008	Mittel	262.95 m ü.M.		Maximum	263.68 (07.Mai)		Minimum	262.11 (14.Sep)		Amplitude	1.57 m		



Periode	2005 - 2008												
Monatsmittel	262.32	262.10 -	262.57	263.53	263.79 +	263.74	263.61	263.54	263.40	262.87	262.67	262.54	
Maximum	263.85	263.51 -	263.76	264.69	264.72	264.76 +	264.35	264.55	264.36	264.43	264.10	264.02	
Jahr	2007	2007	2007	2006	2006	2006	2006	2007	2007	2006	2006	2006	
Minimum	260.17	259.98 -	260.24	262.77	263.05 +	263.05 +	262.85	262.37	262.11	260.66	260.31	260.17	
Jahr	2006	2006	2006	2008	2007	2007	2008	2008	2008	2005	2005	2005	
Amplitude	0.37	0.33	2.60 +	1.89	0.24 -	0.59	0.74	0.75	0.67	0.49	0.44	0.40	
Jahr	2007	2006	2006	2006	2008	2007	2006	2007	2008	2007	2006	2006	
Periode	Mittel	263.03 m ü.M.		Maximum	264.76 (07.Jun 2006)		Minimum	259.98 (17.Feb 2006)		Amplitude	4.78 m		

Darstellung der letzten 4 Jahre



Grundwassertemperatur



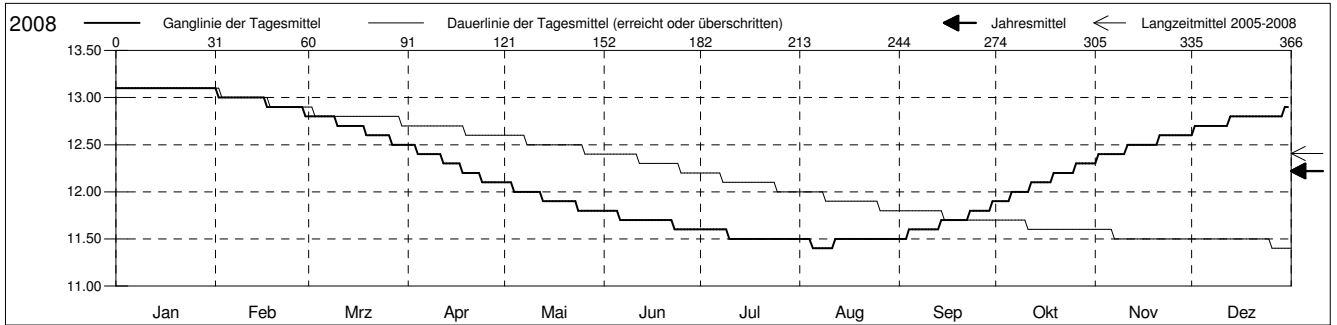
Ergolzthal

Pratteln 41.J.15 Löli
 Abstichpunkt: 274.58 m ü.M.
 OK Terrain: 273.73 m ü.M.

Amt für Umweltschutz und Energie

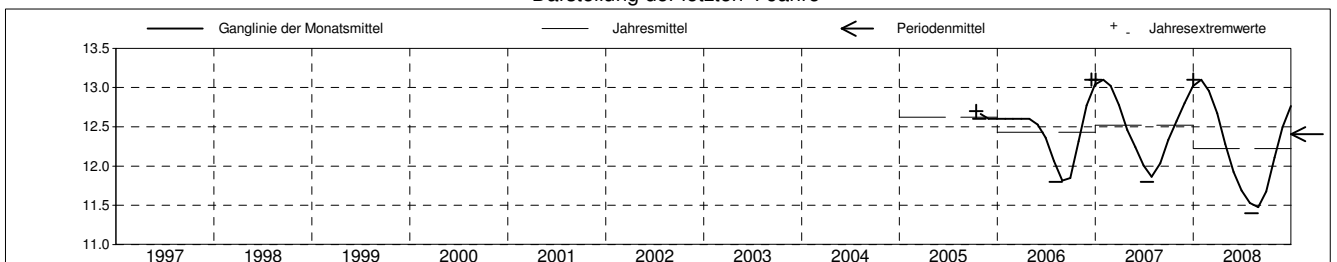
Kanton Basel-Landschaft
 Koordinaten: 620381.38 / 263992.53

2008	Januar	Februar	März	April	Mai	Juni	Juli	August	September	Oktober	November	Dezember	
1	13.1 +	13.1 +	12.8 +	12.5 +	12.1 +	11.8 +	11.6 +	11.5 +	11.5 -	11.9 -	12.3 -	12.6 -	1
2	13.1 +	13.0	12.8 +	12.5 +	12.1 +	11.8 +	11.6 +	11.5 +	11.5 -	11.9 -	12.4	12.7	2
3	13.1 +	13.0	12.8 +	12.5 +	12.1 +	11.8 +	11.6 +	11.5 +	11.5 -	11.9 -	12.4	12.7	3
4	13.1 +	13.0	12.8 +	12.4	12.0	11.8 +	11.6 +	11.5 +	11.6	11.9 -	12.4	12.7	4
5	13.1 +	13.0	12.8 +	12.4	12.0	11.8 +	11.6 +	11.4 -	11.6	11.9 -	12.4	12.7	5
6	13.1 +	13.0	12.8 +	12.4	12.0	11.7	11.6 +	11.4 -	11.6	12.0	12.4	12.7	6
7	13.1 +	13.0	12.8 +	12.4	12.0	11.7	11.6 +	11.4 -	11.6	12.0	12.4	12.7	7
8	13.1 +	13.0	12.8 +	12.4	12.0	11.7	11.6 +	11.4 -	11.6	12.0	12.4	12.7	8
9	13.1 +	13.0	12.8 +	12.4	12.0	11.7	11.6 +	11.4 -	11.6	12.0	12.4	12.7	9
10	13.1 +	13.0	12.7	12.4	12.0	11.7	11.5 -	11.4 -	11.6	12.0	12.4	12.7	10
11	13.1 +	13.0	12.7	12.4	12.0	11.7	11.5 -	11.4 -	11.6	12.0	12.5	12.7	11
12	13.1 +	13.0	12.7	12.3	12.0	11.7	11.5 -	11.5 +	11.6	12.1	12.5	12.7	12
13	13.1 +	13.0	12.7	12.3	11.9	11.7	11.5 -	11.5 +	11.6	12.1	12.5	12.8	13
14	13.1 +	13.0	12.7	12.3	11.9	11.7	11.5 -	11.5 +	11.7	12.1	12.5	12.8	14
15	13.1 +	13.0	12.7	12.3	11.9	11.7	11.5 -	11.5 +	11.7	12.1	12.5	12.8	15
16	13.1 +	13.0	12.7	12.3	11.9	11.7	11.5 -	11.5 +	11.7	12.1	12.5	12.8	16
17	13.1 +	12.9	12.7	12.3	11.9	11.7	11.5 -	11.5 +	11.7	12.1	12.5	12.8	17
18	13.1 +	12.9	12.7	12.2	11.9	11.7	11.5 -	11.5 +	11.7	12.1	12.5	12.8	18
19	13.1 +	12.9	12.6	12.2	11.9	11.7	11.5 -	11.5 +	11.7	12.2	12.5	12.8	19
20	13.1 +	12.9	12.6	12.2	11.9	11.7	11.5 -	11.5 +	11.7	12.2	12.5	12.8	20
21	13.1 +	12.9	12.6	12.2	11.9	11.7	11.5 -	11.5 +	11.7	12.2	12.6 +	12.8	21
22	13.1 +	12.9	12.6	12.2	11.9	11.7	11.5 -	11.5 +	11.7	12.2	12.6 +	12.8	22
23	13.1 +	12.9	12.6	12.2	11.9	11.6 -	11.5 -	11.5 +	11.8	12.2	12.6 +	12.8	23
24	13.1 +	12.9	12.6	12.1 -	11.8 -	11.6 -	11.5 -	11.5 +	11.8	12.2	12.6 +	12.8	24
25	13.1 +	12.9	12.6	12.1 -	11.8 -	11.6 -	11.5 -	11.5 +	11.8	12.2	12.6 +	12.8	25
26	13.1 +	12.9	12.6	12.1 -	11.8 -	11.6 -	11.5 -	11.5 +	11.8	12.3 +	12.6 +	12.8	26
27	13.1 +	12.9	12.5 -	12.1 -	11.8 -	11.6 -	11.5 -	11.5 +	11.8	12.3 +	12.6 +	12.8	27
28	13.1 +	12.9	12.5 -	12.1 -	11.8 -	11.6 -	11.5 -	11.5 +	11.8	12.3 +	12.6 +	12.8	28
29	13.1 +	12.8 -	12.5 -	12.1 -	11.8 -	11.6 -	11.5 -	11.5 +	11.8	12.3 +	12.6 +	12.8	29
30	13.1 +		12.5 -	12.1 -	11.8 -	11.6 -	11.5 -	11.5 +	11.9 +	12.3 +	12.6 +	12.9 +	30
31	13.1 +		12.5 -		11.8 -		11.5 -	11.5 +		12.3 +		12.9 +	31
Monatsmittel	13.1 +	13.0	12.7	12.3	11.9	11.7	11.5 -	11.5 -	11.7	12.1	12.5	12.8	
Maximum	13.1 +	13.1 +	12.8	12.5	12.1	11.8	11.6	11.5 -	11.9	12.3	12.6	12.9	
Datum	01.01	01.02	01.03	01.04	01.05	01.06	01.07	01.08	30.09	26.10	21.11	30.12	
Minimum	13.1 +	12.8	12.5	12.1	11.8	11.6	11.5	11.4 -	11.5	11.9	12.3	12.6	
Datum	01.01	29.02	27.03	24.04	24.05	23.06	10.07	05.08	01.09	01.10	01.11	01.12	
Amplitude	0.0 +	0.3	0.3	0.4	0.3	0.2	0.1	0.1	0.4	0.4	0.3	0.3	
Jahr 2008	Mittel	12.2 °C		Maximum	13.1 (01.Jan)		Minimum	11.4 (05.Aug)		Amplitude	1.7 °C		



Periode	2005 - 2008												
Monatsmittel	12.9 +	12.9 +	12.7	12.4	12.2	12.0	11.8 -	11.8 -	12.0	12.4	12.7	12.9 +	
Maximum	13.1 +	13.1 +	12.9	12.6	12.6	12.5	12.2 -	12.2 -	12.5	12.7	12.9	13.1 +	
Jahr	2007	2007	2007	2006	2006	2006	2006	2007	2007	2005	2006	2006	
Minimum	12.6 +	12.6 +	12.5	12.1	11.8	11.6	11.5	11.4 -	11.5	11.9	12.3	12.6 +	
Jahr	2006	2006	2008	2008	2008	2008	2008	2008	2008	2008	2008	2005	
Amplitude	0.0 -	0.3	0.3	0.4	0.3	0.3	0.3	0.3	0.4	0.6 +	0.3	0.3	
Jahr	2006	2008	2008	2008	2008	2006	2006	2007	2008	2006	2008	2008	
Periode	Mittel	12.4 °C		Maximum	13.1 (17.Dez 2006)		Minimum	11.4 (05.Aug 2008)		Amplitude	1.7 °C		

Darstellung der letzten 4 Jahre



Grundwasserspiegel im Ergolztal

Station 41.J.15

Pratteln

Löli

Koordinaten: 620'381.37 / 263'992.53

Opm

Messwerte: Grundwasserspiegel
Temperatur

