

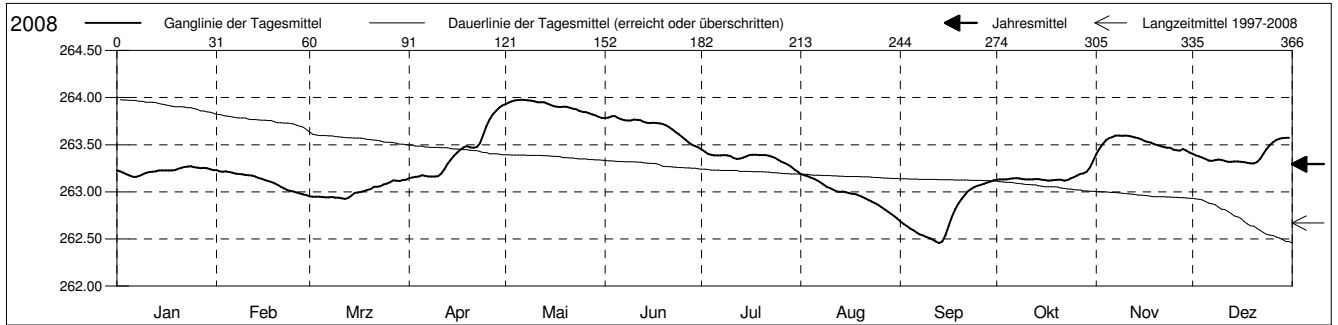
Grundwasserstände



Ergolzthal
 Pratteln 41.J.14 Löli - Remeli
 Abstichpunkt: 278.15 m ü.M.
 OK Terrain: 277.23 m ü.M.

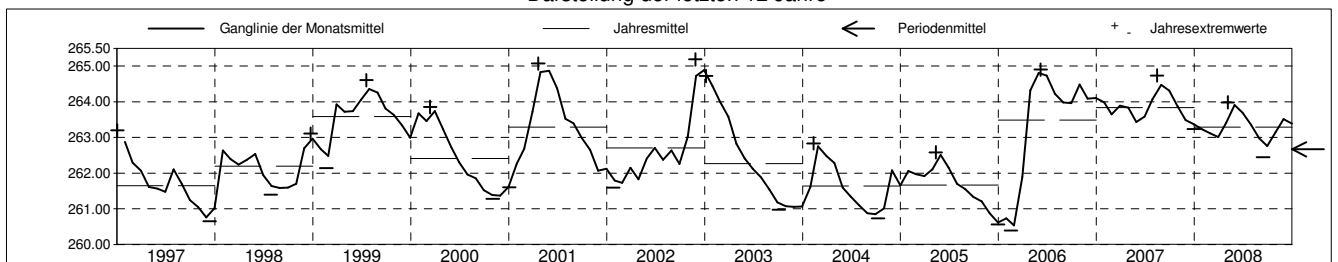
Amt für Umweltschutz und Energie
 Kanton Basel-Landschaft
 Koordinaten: 620545.75 / 264047.00

2008	Januar	Februar	März	April	Mai	Juni	Juli	August	September	Oktober	November	Dezember	
1	263.23	263.23 +	262.95	263.14 -	263.93	263.78	263.45 +	263.19 +	262.69	263.13	263.40 -	263.40	1
2	263.22	263.22	262.95	263.15	263.95	263.79	263.43	263.18	262.66	263.13	263.46	263.39	2
3	263.20	263.21	262.95	263.16	263.96	263.80	263.40	263.17	262.64	263.13	263.51	263.38	3
4	263.19	263.22	262.95	263.16	263.97	263.81 +	263.39	263.15	262.61	263.13	263.55	263.36	4
5	263.17	263.21	262.95	263.18	263.97	263.78	263.39	263.14	262.59	263.14	263.57	263.35	5
Tagesmittel													
6	263.16 -	263.20	262.94	263.17	263.98 +	263.77	263.39	263.12	262.57	263.14	263.58	263.33	6
7	263.16 -	263.19	262.94	263.16	263.97	263.76	263.39	263.10	262.55	263.14	263.60 +	263.33	7
8	263.17	263.19	262.94	263.16	263.97	263.76	263.39	263.08	262.54	263.14	263.60 +	263.34	8
9	263.19	263.18	262.94	263.16	263.97	263.76	263.39	263.05	262.52	263.13	263.59	263.34	9
10	263.20	263.18	262.94	263.17	263.96	263.77	263.38	263.04	262.51	263.13	263.60 +	263.34	10
11	263.21	263.18	262.93	263.19	263.95	263.76	263.36	263.02	262.49	263.13	263.59	263.33	11
12	263.21	263.17	262.92 -	263.24	263.95	263.76	263.35	263.00	262.47	263.13	263.59	263.32	12
13	263.22	263.16	262.93	263.30	263.95	263.74	263.35	263.00	262.46 -	263.14	263.58	263.32	13
14	263.22	263.15	262.96	263.34	263.94	263.73	263.36	263.00	262.47	263.13	263.57	263.32	14
Max. +	263.23	263.14	262.99	263.38	263.92	263.73	263.38	262.99	262.54	263.13	263.56	263.32	15
16	263.23	263.12	262.99	263.42	263.91	263.73	263.39	262.98	262.64	263.12 -	263.54	263.32	16
17	263.23	263.11	263.00	263.45	263.90	263.73	263.39	262.98	262.73	263.12 -	263.53	263.32	17
18	263.23	263.10	263.01	263.47	263.90	263.72	263.39	262.97	262.81	263.12 -	263.52	263.31	18
19	263.23	263.09	263.02	263.48	263.90	263.72	263.39	262.96	262.87	263.12 -	263.51	263.30 -	19
20	263.24	263.07	263.03	263.47	263.90	263.70	263.39	262.95	262.92	263.13	263.49	263.30 -	20
Min. -													
21	263.25	263.05	263.05	263.47	263.89	263.68	263.39	262.93	262.97	263.13	263.49	263.31	21
22	263.26	263.04	263.05	263.47	263.88	263.66	263.38	262.92	263.00	263.12 -	263.47	263.35	22
23	263.27 +	263.02	263.06	263.52	263.87	263.63	263.37	262.90	263.03	263.12 -	263.47	263.40	23
24	263.27 +	263.01	263.08	263.60	263.86	263.61	263.36	262.88	263.05	263.14	263.47	263.45	24
25	263.26	263.00	263.09	263.69	263.85	263.58	263.34	262.86	263.06	263.15	263.45	263.50	25
26	263.26	262.99	263.10	263.77	263.84	263.55	263.32	262.84	263.07	263.17	263.44	263.53	26
27	263.25	262.98	263.12	263.82	263.84	263.52	263.30	262.82	263.09	263.19	263.44	263.55	27
28	263.25	262.97	263.12	263.86	263.82	263.50	263.29	262.79	263.10	263.20	263.46	263.56	28
29	263.25	262.96 -	263.11	263.89	263.81	263.48	263.27	262.77	263.11	263.21	263.44	263.57 +	29
30	263.24		263.13 +	263.92 +	263.80	263.47 -	263.24	262.74	263.12 +	263.26	263.42	263.57 +	30
31	263.23		263.13 +		263.78 -		263.21 -	262.72 -		263.33 +		263.57 +	31
Monatsmittel	263.22	263.12	263.01	263.41	263.91 +	263.69	263.36	262.98	262.76 -	263.15	263.52	263.39	
Maximum	263.28	263.24	263.14	263.93	263.98 +	263.81	263.46	263.20	263.13 -	263.37	263.60	263.58	
Datum	24.01	01.02	30.03	30.04	05.05	04.06	01.07	01.08	30.09	31.10	08.11	31.12	
Amplitude	0.13	0.28	0.22	0.79	0.21	0.35	0.26	0.50	0.68	0.25	0.24	0.29	
Jahr 2008	Mittel	263.29 m ü.M.		Maximum	263.98 (05.Mai)		Minimum	262.45 (14.Sep)		Amplitude	1.54 m		



Periode	1997 - 2008												
Monatsmittel	262.67	262.59	262.88	263.03	263.04 +	262.87	262.69	262.57	262.32 -	262.35	262.51	262.48	
Maximum	264.72	264.11 -	264.72	265.07	265.02	264.90	264.61	264.74	264.53	264.61	265.19 +	265.17	
Jahr	2003	2003	2001	2001	2001	2006	1999	2007	2007	2006	2002	2002	
Minimum	260.57	260.39 -	260.67	261.42 +	261.33	261.21	260.98	260.79	260.77	260.73	260.66	260.57	
Jahr	2006	2006	2006	1997	2004	2004	2004	2004	2004	2004	1997	2005	
Amplitude	1.58	1.35	2.61 +	1.58	1.19	0.96	0.61 -	0.83	0.68	1.54	1.22	1.54	
Jahr	2004	1999	2006	2006	2002	2001	2006	1997	2008	2002	2002	1998	
Periode	Mittel	262.67 m ü.M.		Maximum	265.19 (27.Nov 2002)		Minimum	260.39 (17.Feb 2006)		Amplitude	4.80 m		

Darstellung der letzten 12 Jahre



Grundwassertemperatur



Ergolzthal

Pratteln

Abstichpunkt:

OK Terrain:

41.J.14

278.15

277.23

Löli - Remeli

m ü.M.

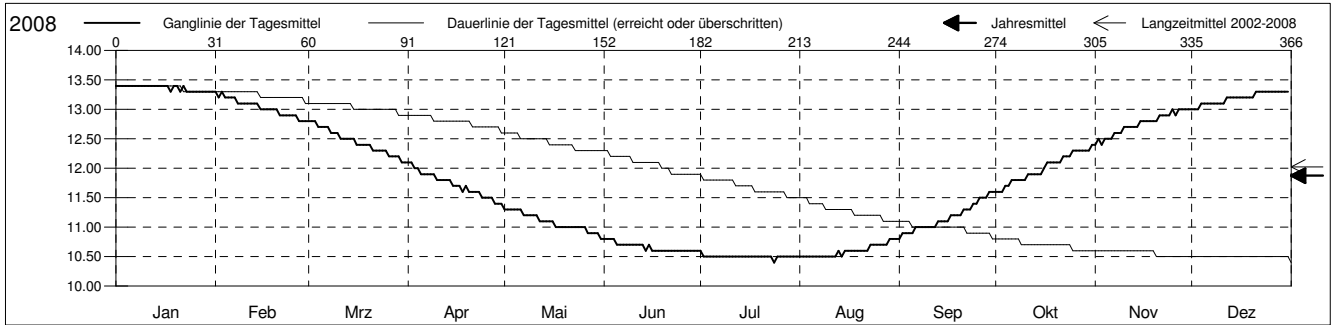
m ü.M.

Amt für Umweltschutz und Energie

Kanton Basel-Landschaft

Koordinaten: 620545.75 / 264047.00

2008	Januar	Februar	März	April	Mai	Juni	Juli	August	September	Oktober	November	Dezember	
1	13.4 +	13.3 +	12.8 +	12.1 +	11.3 +	10.8 +	10.6 +	10.5 -	10.8 -	11.6 -	12.4 -	13.0 -	1
2	13.4 +	13.2	12.8 +	12.1 +	11.3 +	10.8 +	10.5	10.5 -	10.9	11.6 -	12.5	13.0 -	2
3	13.4 +	13.3 +	12.8 +	12.0	11.3 +	10.8 +	10.5	10.5 -	10.9	11.6 -	12.4 -	13.0 -	3
4	13.4 +	13.2	12.7	12.0	11.3 +	10.8 +	10.5	10.5 -	10.9	11.7	12.5	13.1	4
5	13.4 +	13.2	12.7	11.9	11.3 +	10.7	10.5	10.5 -	10.9	11.7	12.5	13.1	5
Tagesmittel													
6	13.4 +	13.2	12.7	11.9	11.3 +	10.7	10.5	10.5 -	11.0	11.8	12.5	13.1	6
7	13.4 +	13.2	12.7	11.9	11.2	10.7	10.5	10.5 -	11.0	11.8	12.6	13.1	7
8	13.4 +	13.1	12.6	11.9	11.2	10.7	10.5	10.5 -	11.0	11.8	12.6	13.1	8
9	13.4 +	13.1	12.6	11.9	11.2	10.7	10.5	10.5 -	11.0	11.8	12.6	13.1	9
10	13.4 +	13.1	12.6	11.8	11.2	10.7	10.5	10.5 -	11.0	11.8	12.7	13.1	10
11	13.4 +	13.1	12.5	11.8	11.2	10.7	10.5	10.5 -	11.0	11.9	12.7	13.1	11
12	13.4 +	13.1	12.5	11.8	11.1	10.7	10.5	10.5 -	11.0	11.9	12.7	13.2	12
13	13.4 +	13.1	12.5	11.8	11.1	10.7	10.5	10.6	11.1	11.9	12.7	13.2	13
14	13.4 +	13.1	12.5	11.8	11.1	10.6 -	10.5	10.5 -	11.1	11.9	12.7	13.2	14
15	13.4 +	13.0	12.5	11.7	11.1	10.7	10.5	10.6	11.1	11.9	12.8	13.2	15
Max. +													
16	13.4 +	13.0	12.4	11.7	11.1	10.6 -	10.5	10.6	11.1	12.0	12.8	13.2	16
17	13.4 +	13.0	12.4	11.7	11.0	10.6 -	10.5	10.6	11.2	12.1	12.8	13.2	17
18	13.3 -	13.0	12.4	11.6	11.0	10.6 -	10.5	10.6	11.2	12.1	12.8	13.2	18
19	13.4 +	13.0	12.4	11.7	11.0	10.6 -	10.5	10.6	11.2	12.1	12.8	13.2	19
20	13.4 +	13.0	12.4	11.6	11.0	10.6 -	10.5	10.6	11.2	12.1	12.8	13.2	20
Min. -													
21	13.3 -	12.9	12.3	11.6	11.0	10.6 -	10.5	10.6	11.3	12.1	12.9	13.3 +	21
22	13.4 +	12.9	12.3	11.6	11.0	10.6 -	10.5	10.6	11.3	12.2	12.9	13.3 +	22
23	13.3 -	12.9	12.3	11.6	11.0	10.6 -	10.5	10.7	11.3	12.2	12.9	13.3 +	23
24	13.3 -	12.9	12.3	11.5	11.0	10.6 -	10.4 -	10.7	11.4	12.2	12.9	13.3 +	24
25	13.3 -	12.9	12.3	11.5	11.0	10.6 -	10.5	10.7	11.4	12.3	13.0 +	13.3 +	25
26	13.3 -	12.9	12.2	11.5	11.0	10.6 -	10.5	10.7	11.5	12.3	12.9	13.3 +	26
27	13.3 -	12.8 -	12.2	11.5	10.9	10.6 -	10.5	10.7	11.5	12.3	13.0 +	13.3 +	27
28	13.3 -	12.8 -	12.2	11.4 -	10.9	10.6 -	10.5	10.7	11.5	12.3	13.0 +	13.3 +	28
29	13.3 -	12.8 -	12.2	11.4 -	10.9	10.6 -	10.5	10.8 +	11.6 +	12.3	13.0 +	13.3 +	29
30	13.3 -		12.1 -	11.4 -	10.9	10.6 -	10.5	10.8 +	11.6 +	12.3	13.0 +	13.3 +	30
31	13.3 -		12.1 -		10.8 -		10.5	10.8 +		12.4 +		13.3 +	31
Monatsmittel	13.4 +	13.0	12.5	11.7	11.1	10.7	10.5 -	10.6	11.2	12.0	12.7	13.2	
Maximum	13.4 +	13.3	12.8	12.1	11.3	10.8	10.6 -	10.8	11.6	12.4	13.0	13.3	
Datum	01.01	01.02	01.03	01.04	01.05	01.06	01.07	29.08	29.09	31.10	25.11	21.12	
Minimum	13.3 +	12.8	12.1	11.4	10.8	10.6	10.4 -	10.5	10.8	11.6	12.4	13.0	
Datum	18.01	27.02	30.03	28.04	31.05	14.06	24.07	01.08	01.09	01.10	01.11	01.12	
Amplitude	0.1	0.5	0.7	0.7	0.5	0.2	0.2	0.3	0.8	0.8	0.6	0.3	
Jahr 2008	Mittel	11.9 °C		Maximum	13.4 (01.Jan)		Minimum	10.4 (24.Jul)		Amplitude	3.0 °C		



Periode	2002 - 2008												
Monatsmittel	12.7 +	12.6	12.4	12.1	11.7	11.4	11.2 -	11.3	11.6	12.0	12.5	12.7 +	
Maximum	13.6 +	13.4	12.9	12.6	12.5	12.3	12.1	12.0 -	12.3	12.9	13.5	13.6 +	
Jahr	2007	2007	2007	2004	2004	2004	2004	2004	2007	2006	2006	2006	
Minimum	12.1	12.2 +	11.9	11.4	10.8	10.5	10.4 -	10.5	10.8	11.3	11.8	12.1	
Jahr	2006	2006	2003	2008	2008	2003	2008	2003	2003	2003	2003	2004	
Amplitude	0.2 -	0.5	0.7	0.7	0.6	0.6	0.5	0.6	0.8	1.1 +	0.6	0.3	
Jahr	2004	2008	2008	2008	2003	2006	2006	2007	2008	2006	2006	2008	
Periode	Mittel	12.0 °C		Maximum	13.6 (08.Dez 2006)		Minimum	10.4 (24.Jul 2008)		Amplitude	3.2 °C		

Darstellung der letzten 7 Jahre

