

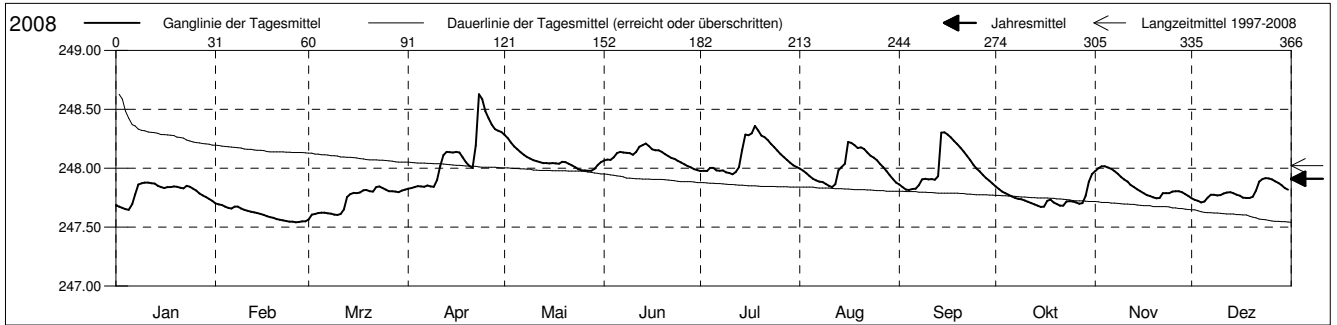
Grundwasserstände



Birstal
 Birsfelden 17.N.35 Rheinparkstrasse
 Abstichpunkt: 256.56 m ü.M.
 OK Terrain: 256.00 m ü.M.

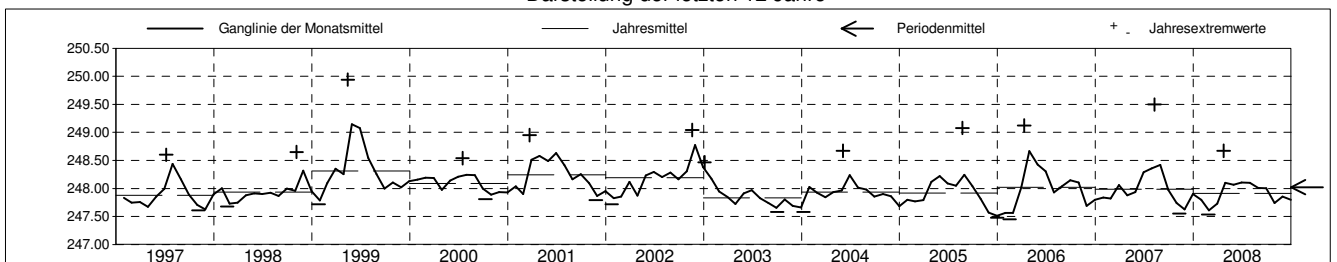
Amt für Umweltschutz und Energie
Kanton Basel-Landschaft
 Koordinaten: 614032.50 / 267370.97

2008	Januar	Februar	März	April	Mai	Juni	Juli	August	September	Oktober	November	Dezember	
1	247.69	247.70 +	247.57 -	247.83 -	248.28 +	248.06	247.98	248.00	247.86	247.85	247.98	247.75	1
2	247.67	247.69	247.61	247.83 -	248.25	248.07	247.98	247.98	247.84	247.82	248.00	247.73	2
3	247.66	247.69	247.61	247.84	248.22	248.07	247.98	247.96	247.82	247.80	248.02 +	247.72	3
4	247.65 -	247.67	247.62	247.85	248.19	248.09	248.00	247.94	247.81 -	247.79	248.02 +	247.71 -	4
5	247.65 -	247.66	247.62	247.85	248.16	248.13	248.00	247.91	247.82	247.78	248.01	247.72	5
Tagesmittel													
6	247.70	247.66	247.62	247.84	248.14	248.14	247.98	247.90	247.83	247.76	247.99	247.75	6
7	247.78	247.67	247.62	247.85	248.11	248.13	247.98	247.89	247.86	247.75	247.98	247.78	7
8	247.86	247.67	247.62	247.85	248.10	248.13	247.98	247.88	247.90	247.74	247.95	247.77	8
9	247.87	247.66	247.61	247.84	248.08	248.13	247.97	247.87	247.91	247.74	247.93	247.77	9
10	247.88 +	247.65	247.60	247.90	248.07	248.12	247.96	247.85	247.91	247.73	247.91	247.77	10
11	247.88 +	247.64	247.61	248.02	248.06	248.14	247.95 -	247.84 -	247.91	247.72	247.89	247.78	11
12	247.87	247.63	247.65	248.11	248.05	248.18	247.97	247.86	247.90	247.70	247.86	247.79	12
13	247.87	247.63	247.76	248.14	248.04	248.20	248.01	247.98	247.93	247.69	247.84	247.80	13
14	247.85	247.62	247.78	248.14	248.04	248.21 +	248.16	248.01	248.30 +	247.68	247.82	247.79	14
15	247.84	247.61	247.79	248.13	248.04	248.19	248.29	248.04	248.30 +	247.67 -	247.80	247.78	15
Max. +													
16	247.83	247.60	247.79	248.14	248.04	248.16	248.28	248.22 +	248.29	247.67 -	247.79	247.77	16
17	247.84	247.59	247.79	248.13	248.04	248.15	248.30	248.21	248.26	247.72	247.77	247.75	17
18	247.84	247.58	247.81	248.09	248.04	248.15	248.36 +	248.20	248.23	247.73	247.76	247.75	18
19	247.85	247.58	247.82	248.05	248.06	248.14	248.32	248.17	248.20	247.71	247.75 -	247.75	19
20	247.84	247.57	247.81	248.02	248.05	248.12	248.28	248.18	248.17	247.69	247.75 -	247.76	20
Min. -													
21	247.84	247.56	247.80	248.00	248.04	248.10	248.26	248.16	248.14	247.68	247.75 -	247.81	21
22	247.83	247.56	247.84	248.19	248.03	248.09	248.24	248.13	248.11	247.68	247.79	247.89	22
23	247.85	247.55	247.85 +	248.63 +	248.01	248.08	248.21	248.11	248.07	247.72	247.79	247.91	23
24	247.84	247.55	247.83	248.59	247.99	248.06	248.18	248.09	248.03	247.72	247.79	247.92 +	24
25	247.83	247.55	247.82	248.49	247.98 -	248.05	248.15	248.07	248.00	247.72	247.80	247.91	25
26	247.81	247.54 -	247.80	248.43	247.98 -	248.03	248.12	248.03	247.97	247.71	247.81	247.90	26
27	247.78	247.54 -	247.80	248.37	247.98 -	248.02	248.10	248.01	247.94	247.70	247.80	247.89	27
28	247.77	247.55	247.80	248.33	247.98 -	248.01	248.07	247.97	247.92	247.70	247.80	247.87	28
29	247.76	247.55	247.80	248.32	247.99	247.99	248.05	247.94	247.89	247.77	247.78	247.86	29
30	247.74		247.81	248.31	248.03	247.98 -	248.02	247.91	247.87	247.89	247.76	247.83	30
31	247.72		247.82		248.05		248.01	247.88		247.95 +		247.82	31
Monatsmittel	247.80	247.61 -	247.73	248.10 +	248.07	248.10 +	248.10 +	248.01	248.00	247.74	247.86	247.80	
Maximum	247.88	247.71 -	247.85	248.67 +	248.29	248.22	248.37	248.27	248.37	247.97	248.02	247.92	
Datum	11.01	01.02	23.03	23.04	01.05	14.06	18.07	16.08	14.09	31.10	04.11	24.12	
Amplitude	0.24	0.18	0.30	0.85	0.32	0.24	0.43	0.43	0.56	0.30	0.28	0.21	
Jahr 2008	Mittel	247.91 m ü.M.		Maximum	248.67 (23.Apr)		Minimum	247.54 (26.Feb)		Amplitude	1.13 m		



Periode	1997 - 2008												
Monatsmittel	247.90	247.85 -	248.00	248.06	248.19	248.26 +	248.17	248.12	248.00	247.93	247.90	247.88	
Maximum	248.60	249.03	248.95	249.12	249.94 +	249.38	248.79	249.50	248.63	248.51 -	249.04	248.62	
Jahr	2004	1999	2001	2006	1999	1999	1999	2007	2002	2002	2002	2002	
Minimum	247.51	247.45 -	247.55	247.62	247.72	247.74	247.76 +	247.69	247.58	247.58	247.50	247.48	
Jahr	2006	2006	2008	1997	2003	1998	2003	2003	2003	2003	2005	2005	
Amplitude	1.02	1.25	1.15	0.85	1.64 +	0.77	0.51 -	1.42	0.70	0.63	0.74	0.57	
Jahr	2004	1999	2001	2008	1999	1999	2000	2007	2005	2006	2002	1997	
Periode	Mittel	248.02 m ü.M.		Maximum	249.94 (15.Mai 1999)		Minimum	247.45 (15.Feb 2006)		Amplitude	2.49 m		

Darstellung der letzten 12 Jahre



Grundwassertemperatur



Birstal

Birsfelden

Abstichpunkt:

OK Terrain:

17.N.35

256.56

256.00

Rheinparkstrasse

m ü.M.

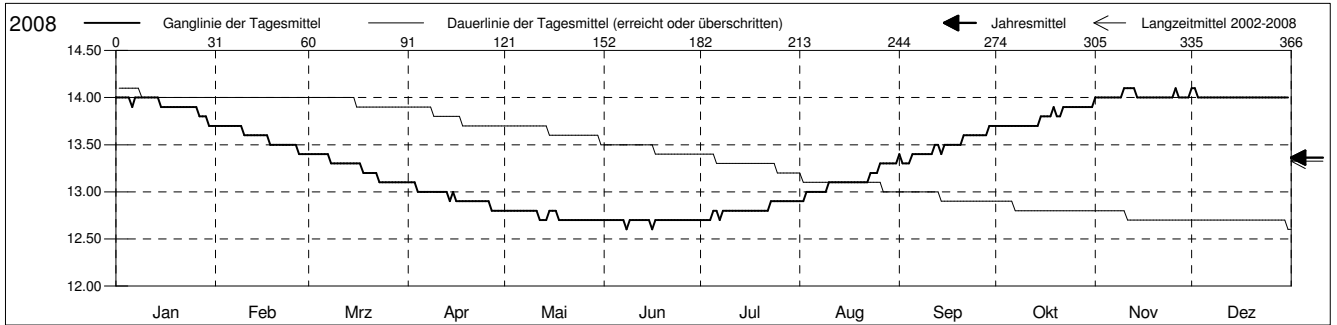
m ü.M.

Amt für Umweltschutz und Energie

Kanton Basel-Landschaft

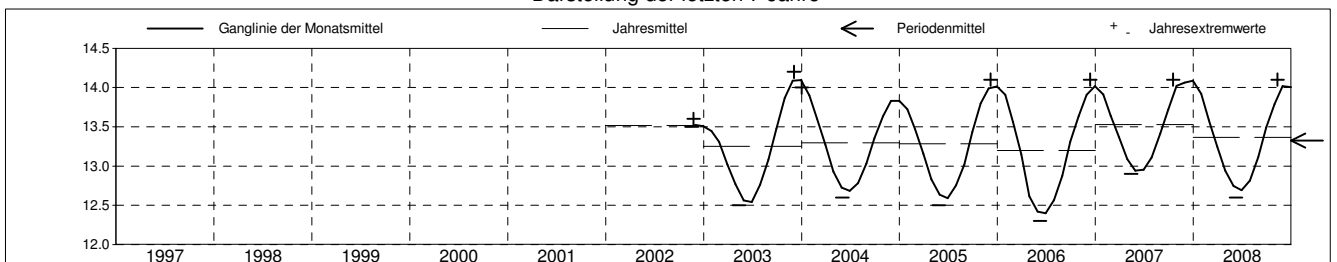
Koordinaten: 614032.50 / 267370.97

2008	Januar	Februar	März	April	Mai	Juni	Juli	August	September	Oktober	November	Dezember	
1	14.0 +	13.7 +	13.4 +	13.1 +	12.8 +	12.7 +	12.7 -	12.9 -	13.4	13.7 -	14.0 -	14.1 +	1
2	14.0 +	13.7 +	13.4 +	13.1 +	12.8 +	12.7 +	12.7 -	12.9 -	13.3 -	13.7 -	14.0 -	14.1 +	2
3	14.0 +	13.7 +	13.4 +	13.1 +	12.8 +	12.7 +	12.7 -	13.0	13.3 -	13.7 -	14.0 -	14.0 -	3
4	14.0 +	13.7 +	13.4 +	13.0	12.8 +	12.7 +	12.7 -	13.0	13.3 -	13.7 -	14.0 -	14.0 -	4
5	14.0 +	13.7 +	13.4 +	13.0	12.8 +	12.7 +	12.8	13.0	13.4	13.7 -	14.0 -	14.0 -	5
Tagesmittel													
6	13.9	13.7 +	13.4 +	13.0	12.8 +	12.7 +	12.8	13.0	13.4	13.7 -	14.0 -	14.0 -	6
7	14.0 +	13.7 +	13.4 +	13.0	12.8 +	12.7 +	12.7 -	13.0	13.4	13.7 -	14.0 -	14.0 -	7
8	14.0 +	13.7 +	13.3	13.0	12.8 +	12.6 -	12.8	13.0	13.4	13.7 -	14.0 -	14.0 -	8
9	14.0 +	13.7 +	13.3	13.0	12.8 +	12.7 +	12.8	13.0	13.4	13.7 -	14.0 -	14.0 -	9
10	14.0 +	13.6	13.3	13.0	12.8 +	12.7 +	12.8	13.1	13.4	13.7 -	14.1 +	14.0 -	10
11	14.0 +	13.6	13.3	13.0	12.8 +	12.7 +	12.8	13.1	13.4	13.7 -	14.1 +	14.0 -	11
12	14.0 +	13.6	13.3	13.0	12.7 -	12.7 +	12.8	13.1	13.5	13.7 -	14.1 +	14.0 -	12
13	14.0 +	13.6	13.3	13.0	12.7 -	12.7 +	12.8	13.1	13.5	13.7 -	14.1 +	14.0 -	13
14	14.0 +	13.6	13.3	12.9	12.7 -	12.7 +	12.8	13.1	13.4	13.7 -	14.0 -	14.0 -	14
15	13.9	13.6	13.3	13.0	12.8 +	12.7 +	12.8	13.1	13.5	13.8	14.0 -	14.0 -	15
Max. +													
16	13.9	13.6	13.3	12.9	12.8 +	12.6 -	12.8	13.1	13.5	13.8	14.0 -	14.0 -	16
17	13.9	13.6	13.3	12.9	12.8 +	12.7 +	12.8	13.1	13.5	13.8	14.0 -	14.0 -	17
18	13.9	13.5	13.2	12.9	12.7 -	12.7 +	12.8	13.1	13.5	13.8	14.0 -	14.0 -	18
19	13.9	13.5	13.2	12.9	12.7 -	12.7 +	12.8	13.1	13.5	13.9 +	14.0 -	14.0 -	19
20	13.9	13.5	13.2	12.9	12.7 -	12.7 +	12.8	13.1	13.5	13.8	14.0 -	14.0 -	20
Min. -													
21	13.9	13.5	13.2	12.9	12.7 -	12.7 +	12.8	13.1	13.6	13.8	14.0 -	14.0 -	21
22	13.9	13.5	13.2	12.9	12.7 -	12.7 +	12.8	13.1	13.6	13.9 +	14.0 -	14.0 -	22
23	13.9	13.5	13.1 -	12.9	12.7 -	12.7 +	12.9 +	13.2	13.6	13.9 +	14.0 -	14.0 -	23
24	13.9	13.5	13.1 -	12.9	12.7 -	12.7 +	12.9 +	13.2	13.6	13.9 +	14.0 -	14.0 -	24
25	13.9	13.5	13.1 -	12.9	12.7 -	12.7 +	12.9 +	13.2	13.6	13.9 +	14.0 -	14.0 -	25
26	13.9	13.5	13.1 -	12.9	12.7 -	12.7 +	12.9 +	13.3 +	13.6	13.9 +	14.1 +	14.0 -	26
27	13.8	13.4 -	13.1 -	12.8 -	12.7 -	12.7 +	12.9 +	13.3 +	13.6	13.9 +	14.0 -	14.0 -	27
28	13.8	13.4 -	13.1 -	12.8 -	12.7 -	12.7 +	12.9 +	13.3 +	13.6	13.9 +	14.0 -	14.0 -	28
29	13.8	13.4 -	13.1 -	12.8 -	12.7 -	12.7 +	12.9 +	13.3 +	13.7 +	13.9 +	14.0 -	14.0 -	29
30	13.7 -		13.1 -	12.8 -	12.7 -	12.7 +	12.9 +	13.3 +	13.7 +	13.9 +	14.0 -	14.0 -	30
31	13.7 -		13.1 -		12.7 -		12.9 +	13.3 +		13.9 +		14.0 -	31
Monatsmittel	13.9	13.6	13.2	12.9	12.7 -	12.7 -	12.8	13.1	13.5	13.8	14.0 +	14.0 +	
Maximum	14.0	13.7	13.4	13.1	12.8	12.7 -	12.9	13.3	13.7	13.9	14.1 +	14.1 +	
Datum	01.01	01.02	01.03	01.04	01.05	01.06	23.07	26.08	29.09	19.10	10.11	01.12	
Minimum	13.7	13.4	13.1	12.8	12.7	12.6 -	12.7	12.9	13.3	13.7	14.0 +	14.0 +	
Datum	30.01	27.02	23.03	27.04	12.05	08.06	01.07	01.08	02.09	01.10	01.11	03.12	
Amplitude	0.3	0.3	0.3	0.3	0.1	0.1	0.2	0.4	0.4	0.2	0.1	0.1	
Jahr 2008	Mittel	13.4 °C		Maximum	14.1 (10.Nov)		Minimum	12.6 (08.Jun)		Amplitude	1.5 °C		



Periode	2002 - 2008												
Monatsmittel	13.8	13.5	13.2	12.9	12.7	12.6 -	12.8	13.1	13.5	13.8	13.9 +	13.9 +	
Maximum	14.0	13.8	13.5	13.2	13.0 -	13.0 -	13.3	13.6	13.9	14.1	14.1	14.2 +	
Jahr	2004	2007	2004	2007	2007	2007	2007	2007	2007	2007	2007	2003	2003
Minimum	13.4	13.2	12.9	12.4	12.4	12.3 -	12.4	12.7	13.1	13.5 +	13.5 +	13.5 +	
Jahr	2003	2003	2003	2006	2006	2006	2006	2006	2004	2004	2002	2002	
Amplitude	0.3	0.3	0.5 +	0.5 +	0.2 -	0.2 -	0.3	0.4	0.5 +	0.4	0.2 -	0.2 -	
Jahr	2004	2006	2006	2006	2003	2005	2006	2003	2005	2003	2004	2003	
Periode	Mittel	13.3 °C		Maximum	14.2 (04.Dez 2003)		Minimum	12.3 (08.Jun 2006)		Amplitude	1.9 °C		

Darstellung der letzten 7 Jahre



Grundwasserspiegel im Birstal

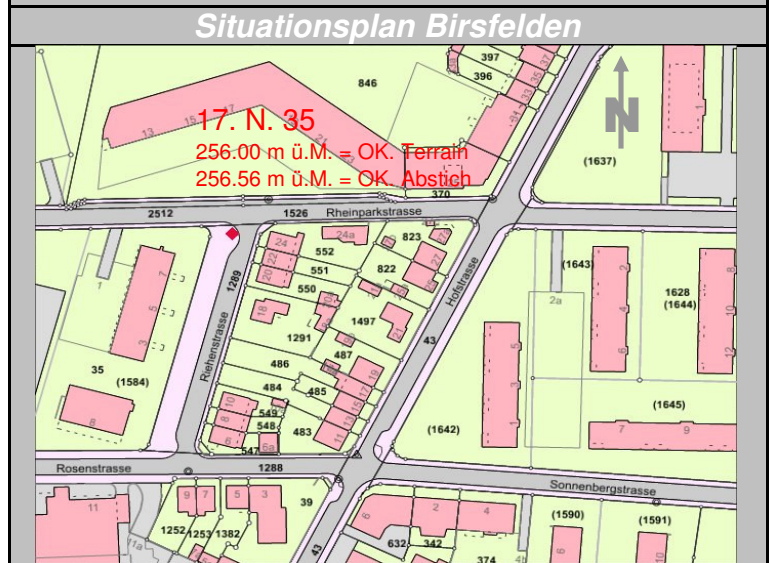
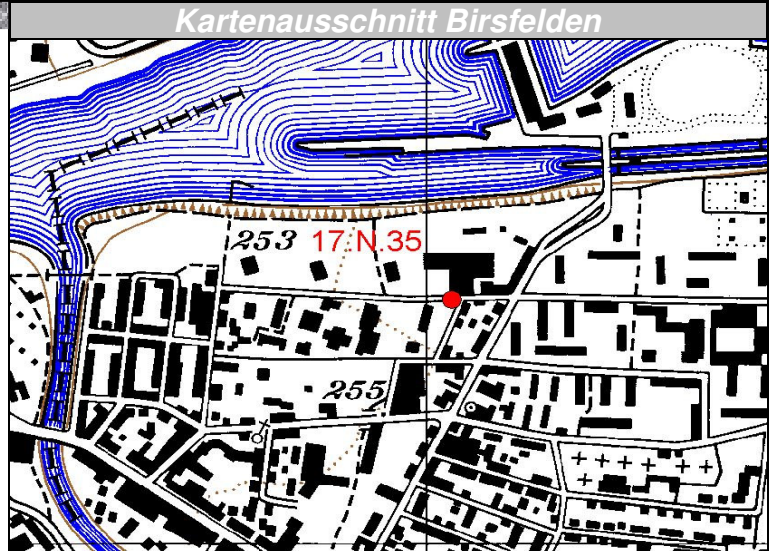
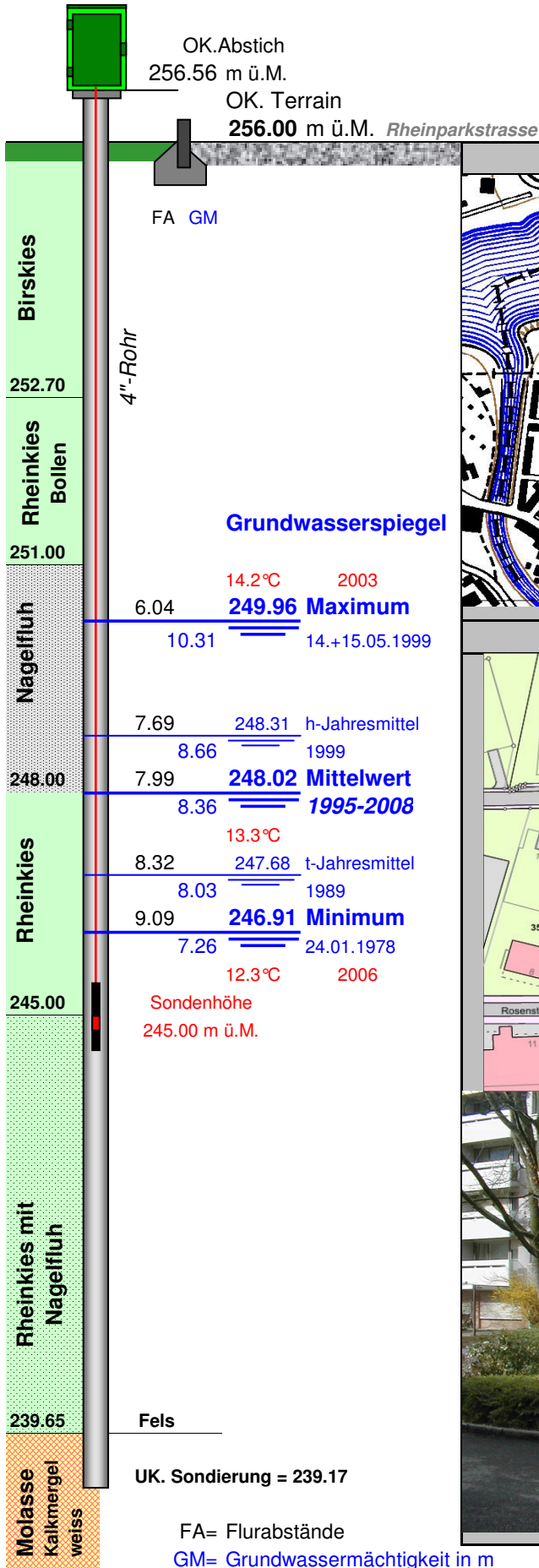
Station 17.N.35 Birsfelden BL 272

Rheinparkstrasse

OP 165540

Koordinaten: 614'032.52 / 267'370.98

Messwerte: Grundwasserspiegel
Temperatur



FA= Flurabstände
GM= Grundwassermächtigkeit in m