

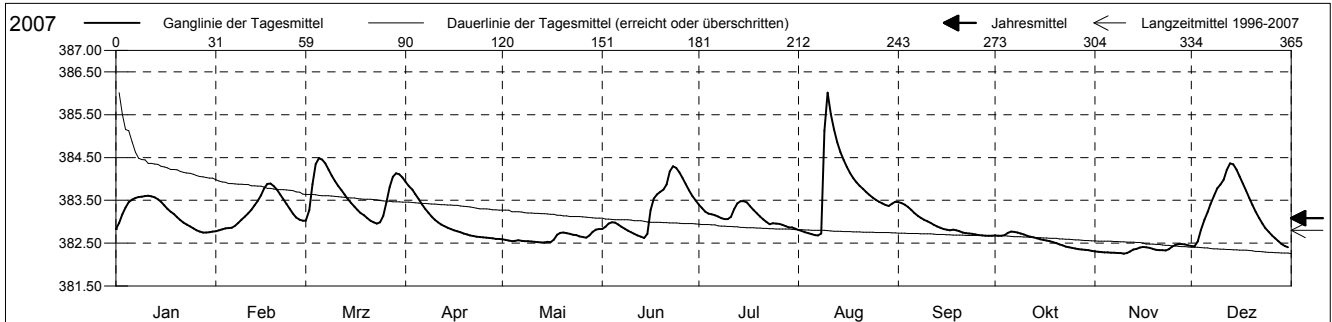
**Grundwasserstände**



Frenketal  
 Bubendorf 33.J.2 St. Lampenberg  
 Abstichpunkt: 391.83 m ü.M.  
 OK Terrain: 390.71 m ü.M.

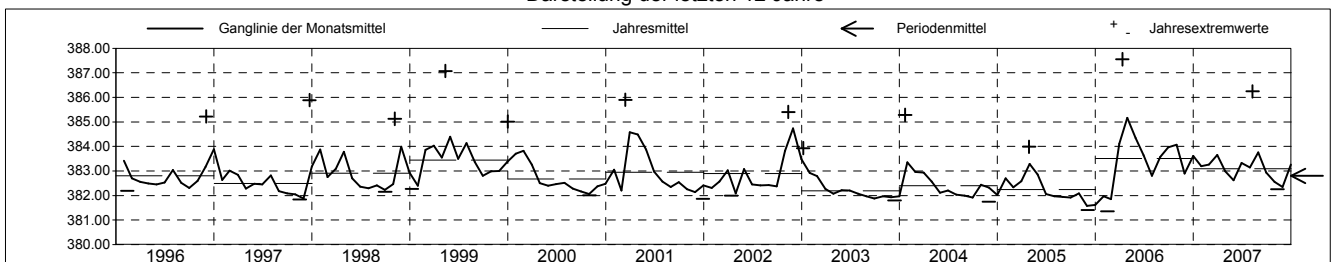
**Amt für Umweltschutz und Energie**  
**Kanton Basel-Landschaft**  
 Koordinaten: 624098.56 / 254629.44

2007	Januar	Februar	März	April	Mai	Juni	Juli	August	September	Oktober	November	Dezember	
1	382.83	382.78 -	383.03	383.93 +	382.59	382.84	383.40	382.81	383.46 +	382.68	382.31	382.44	1
2	382.97	382.80	383.27	383.84	382.58	382.89	383.31	382.79	383.43	382.68	382.30	382.43	2
3	383.17	382.82	383.87	383.75	382.56	382.95	383.23	382.76	383.40	382.68	382.29	382.54	3
4	383.34	382.84	384.35	383.65	382.55	382.99	383.19	382.73	383.35	382.69	382.29	382.81	4
5	383.46	382.85	384.48 +	383.52	382.55	382.98	383.18	382.71	383.28	382.74	382.29	383.05	5
Tagesmittel													
6	383.52	382.86	384.45	383.41	382.57	382.93	383.16	382.69	383.20	382.77 +	382.28	383.23	6
7	383.55	382.90	384.36	383.30	382.56	382.88	383.12	382.68 -	383.14	382.77 +	382.27	383.41	7
8	383.58	382.97	384.22	383.21	382.55	382.84	383.08	382.73	383.09	382.75	382.27	383.61	8
9	383.59	383.04	384.08	383.12	382.55	382.79	383.06	385.12	383.05	382.72	382.27	383.78	9
10	383.60 +	383.12	383.95	383.05	382.54	382.76	383.06	386.02 +	383.01	382.70	382.26 -	383.87	10
11	383.60 +	383.20	383.84	382.99	382.53	382.72	383.12	385.52	382.97	382.68	382.27	383.98	11
12	383.59	383.28	383.74	382.94	382.52 -	382.68	383.29	385.15	382.93	382.65	382.31	384.21	12
13	383.57	383.39	383.64	382.90	382.52 -	382.65	383.43	384.85	382.89	382.63	382.35	384.36 +	13
14	383.52	383.49	383.54	382.86	382.52 -	382.62 -	383.48 +	384.62	382.86	382.61	382.37	384.34	14
15	383.46	383.61	383.45	382.83	382.53	382.72	383.48 +	384.44	382.83	382.59	382.40	384.22	15
Max. +													
16	383.39	383.78	383.36	382.80	382.53	383.27	383.45	384.28	382.81	382.58	382.42	384.06	16
17	383.30	383.88	383.27	382.78	382.58	383.54	383.36	384.14	382.80	382.56	382.41	383.89	17
18	383.23	383.89 +	383.20	382.76	382.70	383.64	383.27	384.02	382.82	382.55	382.39	383.73	18
19	383.18	383.84	383.15	382.73	382.74	383.70	383.19	383.92	382.80	382.53	382.37	383.56	19
20	383.11	383.75	383.08	382.70	382.75	383.75	383.12	383.84	382.78	382.50	382.34	383.39	20
Min. -													
21	383.04	383.64	383.03	382.68	382.74	383.87	383.05	383.77	382.75	382.47	382.34	383.24	21
22	382.98	383.53	382.99	382.67	382.72	384.18	383.00	383.69	382.74	382.45	382.33	383.09	22
23	382.93	383.41	382.96 -	382.65	382.70	384.30 +	382.95	383.63	382.73	382.42	382.33	382.96	23
24	382.89	383.30	382.99	382.64	382.69	384.26	382.96	383.57	382.72	382.40	382.36	382.85	24
25	382.84	383.19	383.14	382.64	382.66	384.16	382.96	383.51	382.71	382.39	382.42	382.76	25
26	382.80	383.10	383.46	382.63	382.65	384.02	382.95	383.47	382.69	382.38	382.46	382.68	26
27	382.77	383.05	383.81	382.62	382.63	383.88	382.93	383.43	382.68	382.36	382.48 +	382.61	27
28	382.75 -	383.03	384.05	382.61	382.68	383.74	382.90	383.39	382.68	382.36	382.48 +	382.55	28
29	382.75 -		384.13	382.60 -	382.76	383.61	382.87	383.37	382.67 -	382.35	382.47	382.48	29
30	382.76		384.11	382.60 -	382.82	383.50	382.87	383.42	382.68	382.34	382.45	382.43	30
31	382.77		384.03		382.83 +		382.84 -	383.47		382.32 -		382.40 -	31
Monatsmittel	383.19	383.26	383.65	382.98	382.63	383.32	383.14	383.76 +	382.93	382.56	382.35 -	383.26	
Maximum	383.61	383.90	384.48	383.98	382.83	384.30	383.49	386.24 +	383.47	382.77	382.48 -	384.38	
Datum	11.01	18.02	05.03	01.04	31.05	23.06	14.07	09.08	01.09	06.10	28.11	13.12	
Amplitude	0.86	1.13	1.53	1.38	0.32	1.69	0.66	3.57	0.80	0.46	0.23	2.00	
Jahr 2007	Mittel	383.09 m ü.M.		Maximum	386.24 (09.Aug)		Minimum	382.26 (10.Nov)		Amplitude	3.99 m		



Periode	1996 - 2007												
Monatsmittel	382.96	382.84	383.24 +	383.10	382.96	382.68	382.65	382.56	382.42 -	382.61	382.70	382.85	
Maximum	385.28	387.00	385.90	387.55 +	387.07	384.40 -	386.18	386.24	386.31	385.39	385.40	385.89	
Jahr	2004	1999	2001	2006	1999	2006	1999	2007	2006	2006	2002	1997	
Minimum	381.66	381.35 -	381.82	381.99 +	381.97	381.85	381.81	381.78	381.78	381.70	381.40	381.40	
Jahr	2006	2006	2005	2002	2004	2005	2005	2005	2005	2005	2005	2005	
Amplitude	3.51	4.39 +	3.95	3.27	3.98	1.69 -	3.27	3.57	3.47	2.71	2.48	4.00	
Jahr	2004	1999	2001	2006	1999	2007	1999	2007	2006	2004	1996	1997	
Periode	Mittel	382.80 m ü.M.		Maximum	387.55 (11.Apr 2006)		Minimum	381.35 (14.Feb 2006)		Amplitude	6.20 m		

Darstellung der letzten 12 Jahre



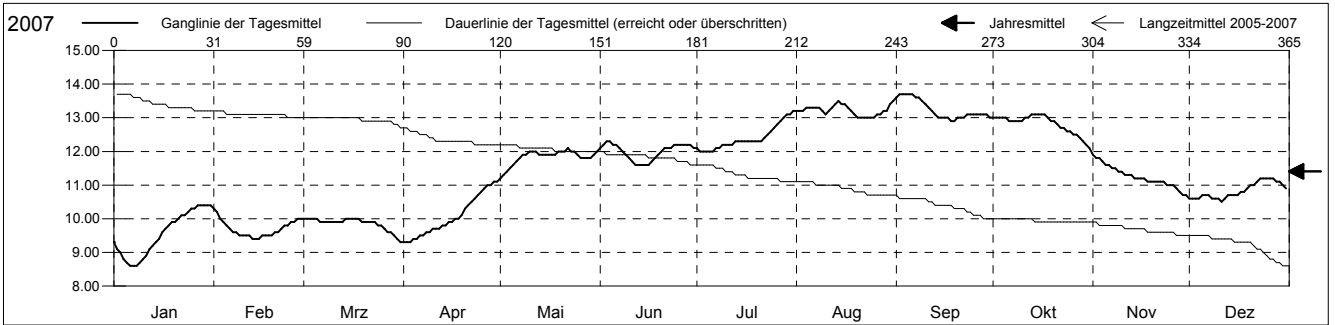
**Grundwassertemperatur**



Frenketal  
 Bubendorf 33.J.2 St. Lampenberg  
 Abstichpunkt: 391.83 m ü.M.  
 OK Terrain: 390.71 m ü.M.

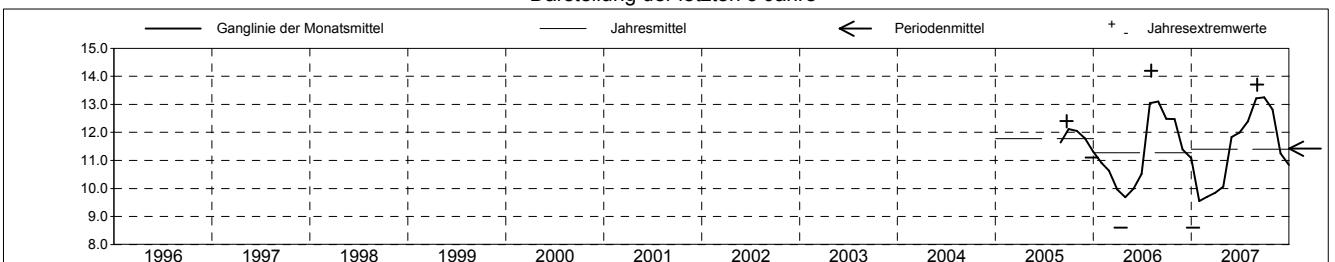
**Amt für Umweltschutz und Energie**  
**Kanton Basel-Landschaft**  
 Koordinaten: 624098.56 / 254629.44

2007	Januar	Februar	März	April	Mai	Juni	Juli	August	September	Oktober	November	Dezember	
1	9.3	10.3 +	10.0 +	9.3 -	11.2 -	12.1	12.1	13.2	13.6	13.0	11.9 +	10.6	1
2	9.1	10.2	10.0 +	9.3 -	11.3	12.2	12.0 -	13.2	13.7 +	13.0	11.8	10.6	2
3	9.0	10.0	10.0 +	9.3 -	11.4	12.3 +	12.0 -	13.2	13.7 +	13.0	11.8	10.6	3
4	8.8	9.9	10.0 +	9.4	11.5	12.3 +	12.0 -	13.3	13.7 +	13.0	11.7	10.6	4
5	8.7	9.8	10.0 +	9.4	11.6	12.2	12.0 -	13.3	13.7 +	13.0	11.6	10.7	5
Tagesmittel													
6	8.6 -	9.7	9.9	9.5	11.7	12.2	12.0 -	13.3	13.7 +	12.9	11.6	10.7	6
7	8.6 -	9.6	9.9	9.5	11.8	12.1	12.1	13.3	13.6	12.9	11.5	10.7	7
8	8.6 -	9.6	9.9	9.6	11.9	12.0	12.1	13.3	13.6	12.9	11.5	10.6	8
9	8.7	9.5	9.9	9.6	11.9	11.9	12.2	13.2	13.5	12.9	11.4	10.6	9
10	8.8	9.5	9.9	9.7	12.0	11.8	12.2	13.1	13.4	12.9	11.4	10.6	10
11	8.9	9.5	9.9	9.7	12.0	11.7	12.2	13.2	13.3	13.0	11.3	10.5 -	11
12	9.1	9.5	9.9	9.7	12.0	11.6 -	12.2	13.3	13.2	13.0	11.3	10.6	12
13	9.2	9.4 -	9.9	9.8	11.9	11.6 -	12.3	13.4	13.1	13.1 +	11.3	10.7	13
14	9.3	9.4 -	10.0 +	9.8	11.9	11.6 -	12.3	13.5 +	13.0	13.1 +	11.2	10.7	14
15	9.4	9.4 -	10.0 +	9.9	11.9	11.6 -	12.3	13.4	13.0	13.1 +	11.2	10.7	15
Max. +													
16	9.6	9.5	10.0 +	9.9	11.9	11.6 -	12.3	13.4	13.0	13.1 +	11.2	10.7	16
17	9.7	9.5	10.0 +	10.0	11.9	11.7	12.3	13.3	13.0	13.1 +	11.2	10.8	17
18	9.8	9.5	10.0 +	10.0	11.9	11.8	12.3	13.2	12.9 -	13.0	11.1	10.8	18
19	9.9	9.5	9.9	10.1	12.0	11.9	12.3	13.1	12.9 -	12.9	11.1	10.9	19
20	9.9	9.6	9.9	10.3	12.0	12.0	12.3	13.0 -	13.0	12.9	11.1	11.0	20
Min. -													
21	10.0	9.6	9.9	10.4	12.0	12.1	12.3	13.0 -	13.0	12.8	11.1	11.0	21
22	10.1	9.7	9.9	10.5	12.1 +	12.1	12.4	13.0 -	13.0	12.7	11.1	11.1	22
23	10.1	9.8	9.9	10.6	12.0	12.1	12.5	13.0 -	13.1	12.7	11.1	11.2 +	23
24	10.2	9.8	9.8	10.7	12.0	12.2	12.6	13.0 -	13.1	12.6	11.0	11.2 +	24
25	10.3	9.9	9.8	10.8	11.9	12.2	12.7	13.0 -	13.1	12.6	11.0	11.2 +	25
26	10.3	9.9	9.7	10.9	11.8	12.2	12.8	13.1	13.1	12.5	11.0	11.2 +	26
27	10.4 +	10.0	9.6	11.0	11.8	12.2	12.9	13.1	13.1	12.5	10.9	11.2 +	27
28	10.4 +	10.0	9.6	11.0	11.8	12.2	13.0	13.2	13.1	12.4	10.8	11.1	28
29	10.4 +		9.5	11.1 +	11.8	12.2	13.1	13.2	13.1	12.3	10.7 -	11.1	29
30	10.4 +		9.4	11.1 +	11.9	12.1	13.1	13.4	13.0	12.2	10.7 -	11.0	30
31	10.4 +		9.3 -		12.0		13.2 +	13.5 +		12.1 -		10.9	31
Monatsmittel	9.5 -	9.7	9.9	10.1	11.8	12.0	12.4	13.2 +	13.2 +	12.8	11.3	10.8	
Maximum	10.4	10.3	10.0 -	11.1	12.1	12.3	13.2	13.5	13.7 +	13.1	11.9	11.2	
Datum	27.01	01.02	01.03	29.04	22.05	03.06	31.07	14.08	02.09	13.10	01.11	23.12	
Minimum	8.6 -	9.4	9.3	9.3	11.2	11.6	12.0	13.0 +	12.9	12.1	10.7	10.5	
Datum	06.01	13.02	31.03	01.04	01.05	12.06	02.07	20.08	18.09	31.10	29.11	11.12	
Amplitude	1.8	0.9	0.7	1.8	0.9	0.7	1.2	0.5	0.8	1.0	1.2	0.7	
Jahr 2007	Mittel	11.4 °C		Maximum	13.7 (02.Sep)		Minimum	8.6 (06.Jan)		Amplitude	5.1 °C		



Periode	2005 - 2007												
Monatsmittel	10.2	10.2	9.9 -	9.9 -	10.9	11.3	12.7 +	12.6	12.6	12.4	11.5	11.1	
Maximum	11.1	10.8	10.2 -	11.1	12.1	12.3	14.0	14.2 +	13.7	13.1	12.6	11.7	
Jahr	2006	2006	2006	2007	2007	2007	2006	2006	2007	2007	2006	2005	
Minimum	8.6 -	9.4	9.3	8.6 -	9.9	10.0	11.2	11.3	11.8 +	11.8 +	10.6	9.5	
Jahr	2007	2007	2007	2006	2006	2006	2005	2005	2005	2005	2006	2007	
Amplitude	1.8	0.9	0.7 -	1.8	0.9	1.9	2.0 +	2.0 +	0.8	1.0	2.0 +	2.0 +	
Jahr	2007	2007	2007	2007	2007	2006	2006	2006	2007	2007	2006	2006	
Periode	Mittel	11.4 °C		Maximum	14.2 (03.Aug 2006)		Minimum	8.6 (11.Apr 2006)		Amplitude	5.6 °C		

Darstellung der letzten 3 Jahre



# Grundwasserspiegel im Frenketal

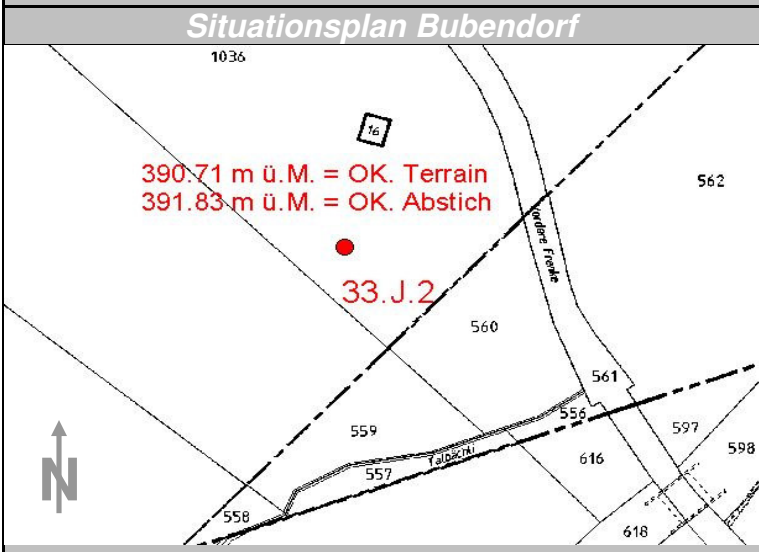
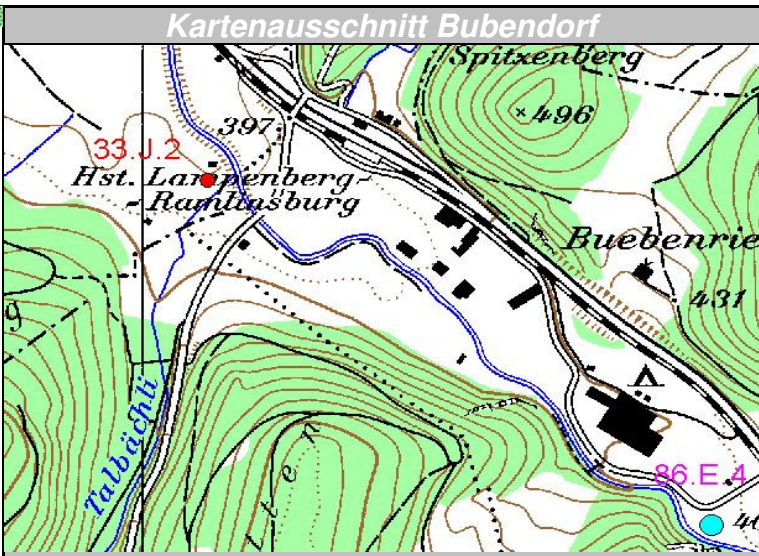
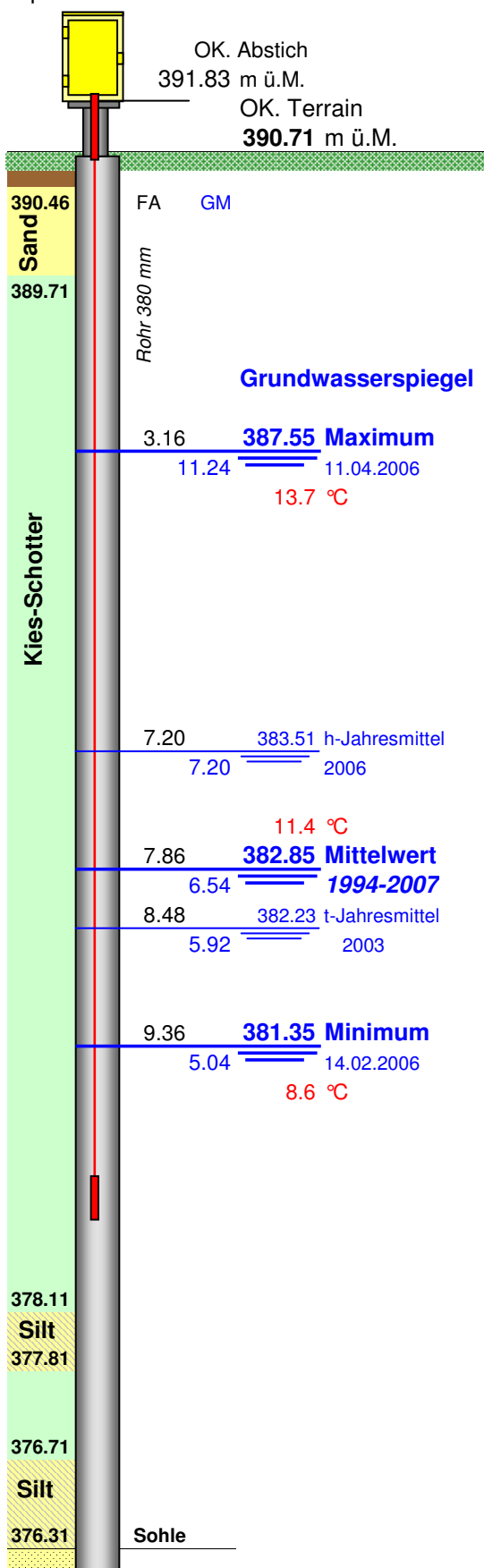
Station 33.J.2 Bubendorf

Opm 201353

Station Lampenberg

Koordinaten: 624'098.58 / 254'629.44

Messwerte: **Grundwasserspiegel**  
**Temperatur**



375.01 UK. Sondierung  
Callovien (Mergel) FA= Flurabstände GM= Grundwassermächtigkeit in m