

Grundwasserstände



Ergolzthal

Böckten

Abstichpunkt:

OK Terrain:

52.K.09

382.41

381.50

Bruggmatt

m ü.M.

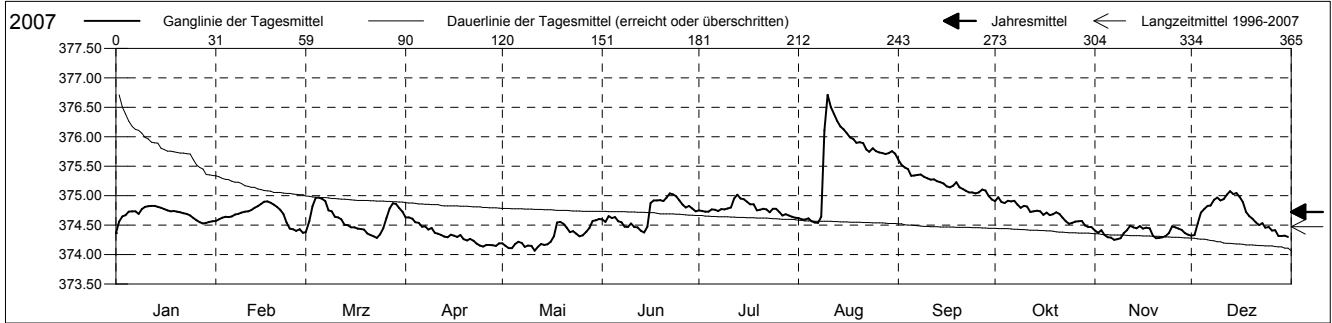
m ü.M.

Amt für Umweltschutz und Energie

Kanton Basel-Landschaft

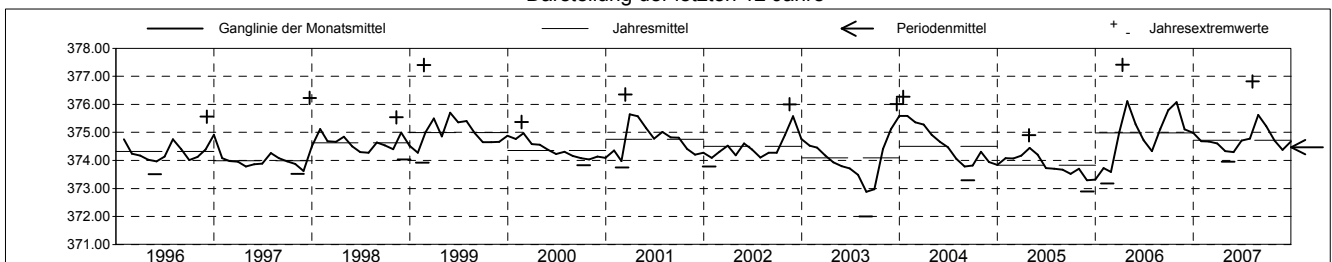
Koordinaten: 629280.00 / 256847.50

2007		Januar	Februar	März	April	Mai	Juni	Juli	August	September	Oktober	November	Dezember	
1		374.36 -	374.57	374.38	374.63 +	374.19	374.60	374.75	374.62	375.61 +	374.91	374.41	374.32	1
2		374.56	374.60	374.57	374.63 +	374.15	374.56	374.74	374.60	375.52	374.98 +	374.37	374.33	2
3		374.64	374.63	374.82	374.61	374.11	374.65	374.73	374.59	375.48	374.89	374.41	374.53	3
4		374.67	374.64	374.97 +	374.55	374.11	374.62	374.73	374.61	375.45	374.88	374.33	374.71	4
5	Tagesmittel	374.73	374.64	374.97 +	374.54	374.18	374.64	374.77	374.57	375.34	374.92	374.30	374.78	5
6		374.73	374.65	374.95	374.47	374.22	374.57	374.76	374.55	375.34	374.90	374.29	374.83	6
7		374.73	374.68	374.91	374.48	374.20	374.55	374.74	374.54 -	375.35	374.92	374.25 -	374.83	7
8		374.69	374.69	374.75	374.42	374.13	374.47	374.77	374.64	375.36	374.85	374.26	374.93	8
9		374.77	374.71	374.73	374.45	374.15	374.47	374.77	376.11	375.32	374.79	374.28	374.97	9
10		374.81	374.73	374.64	374.37	374.14	374.53	374.78	376.71 +	375.29	374.83	374.37	374.92	10
11		374.82	374.73	374.63	374.35	374.07 -	374.47	374.80	376.51	375.27	374.81	374.41	374.94	11
12		374.83 +	374.76	374.60	374.34	374.13	374.46	374.95	376.39	375.28	374.72	374.49 +	375.01	12
13		374.83 +	374.80	374.51	374.30	374.18	374.40	375.02 +	376.27	375.24	374.73	374.46	375.08 +	13
14		374.81	374.82	374.50	374.29	374.17	374.38 -	374.95	376.18	375.23	374.75	374.45	375.03	14
15	Max. +	374.80	374.86	374.46	374.34	374.18	374.47	374.94	376.12	375.21	374.74	374.49 +	375.04	15
16		374.77	374.90 +	374.46	374.32	374.22	374.88	374.90	376.06	375.16	374.67	374.44	374.98	16
17		374.75	374.90 +	374.44	374.30	374.31	374.92	374.85	375.99	375.14	374.72	374.46	374.89	17
18		374.73	374.88	374.44	374.33	374.54	374.92	374.86	375.97	375.17	374.67	374.45	374.72	18
19		374.74	374.85	374.42	374.26	374.56	374.92	374.75	375.90	375.23	374.68	374.32	374.65	19
20	Min. -	374.73	374.81	374.36	374.24	374.52	374.91	374.76	375.91	375.14	374.72	374.28	374.61	20
21		374.72	374.76	374.33	374.27	374.46	374.97	374.78	375.89	375.12	374.69	374.28	374.55	21
22		374.70	374.69	374.31	374.24	374.38	375.04 +	374.77	375.78	375.08	374.63	374.30	374.50	22
23		374.69	374.55	374.28 -	374.19	374.40	375.02	374.72	375.75	375.06	374.57	374.31	374.53	23
24		374.66	374.44	374.34	374.15	374.36	374.99	374.78	375.80	375.06	374.52	374.36	374.46	24
25		374.62	374.43	374.45	374.14 -	374.31	374.92	374.78	375.75	375.04	374.54	374.48	374.47	25
26		374.58	374.41	374.62	374.16	374.33	374.85	374.72	375.73	375.06	374.56	374.46	374.41	26
27		374.55	374.43	374.79	374.16	374.38	374.80	374.66	375.72	375.11	374.57	374.44	374.42	27
28		374.53	374.37 -	374.87	374.16	374.45	374.83	374.68	375.71	375.08	374.57	374.42	374.32	28
29		374.54		374.86	374.15	374.57	374.78	374.66	375.72	374.99	374.49	374.37	374.31	29
30		374.56		374.79	374.19	374.58	374.73	374.64	375.76	374.94 -	374.47 -	374.34	374.32	30
31		374.57		374.73		374.63 +		374.63 -	375.71		374.47 -		374.30 -	31
Monatsmittel		374.68	374.68	374.61	374.33	374.30 -	374.71	374.78	375.62 +	375.22	374.71	374.38	374.67	
Maximum		374.83	374.91	375.05	374.70	374.62	375.12	375.07	376.82 +	375.63	375.01	374.58 -	375.14	
Datum		12.01	17.02	04.03	01.04	29.05	22.06	13.07	09.08	01.09	02.10	12.11	13.12	
Amplitude		0.65	0.68	0.89	0.67	0.66	0.88	0.55	2.37	0.84	0.64	0.42	0.93	
Jahr 2007		Mittel	374.73 m ü.M.			Maximum	376.82 (09.Aug)		Minimum	373.96 (11.Mai)			Amplitude	2.86 m



Periode		1996 - 2007												
Monatsmittel		374.50	374.44	374.69 +	374.63	374.53	374.37	374.37	374.37	374.30 -	374.47	374.45	374.53	
Maximum		376.27	377.40	376.45	377.41 +	377.36	375.74 -	376.24	376.82	377.39	376.97	376.00	376.23	
Jahr		2004	1999	1999	2006	1999	1999	1999	2007	2006	2006	2002	1997	
Minimum		373.40	373.18	373.46	373.67 +	373.51	373.20	373.02	372.01 -	372.67	372.55	372.95	372.89	
Jahr		2006	2006	2006	1997	1996	2003	2003	2003	2003	2003	2005	2005	
Amplitude		1.25	3.48 +	2.90	2.54	2.90	0.99 -	1.28	2.37	2.43	3.23	1.51	2.70	
Jahr		1996	1999	2006	2006	1999	2004	1999	2007	2006	2003	2003	1997	
Periode		Mittel	374.47 m ü.M.			Maximum	377.41 (11.Apr 2006)		Minimum	372.01 (28.Aug 2003)			Amplitude	5.40 m

Darstellung der letzten 12 Jahre



Grundwassertemperatur



Ergolzthal

Böckten

Abstichpunkt:

OK Terrain:

52.K.09

382.41

381.50

Bruggmatt

m ü.M.

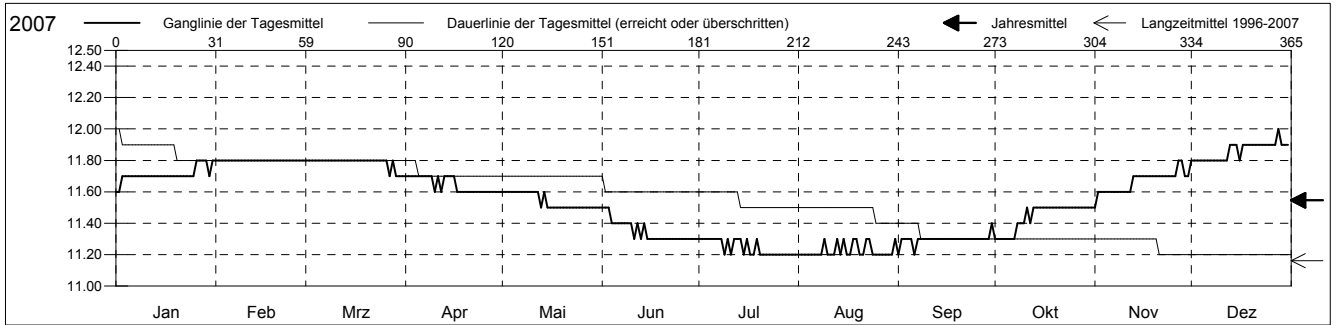
m ü.M.

Amt für Umweltschutz und Energie

Kanton Basel-Landschaft

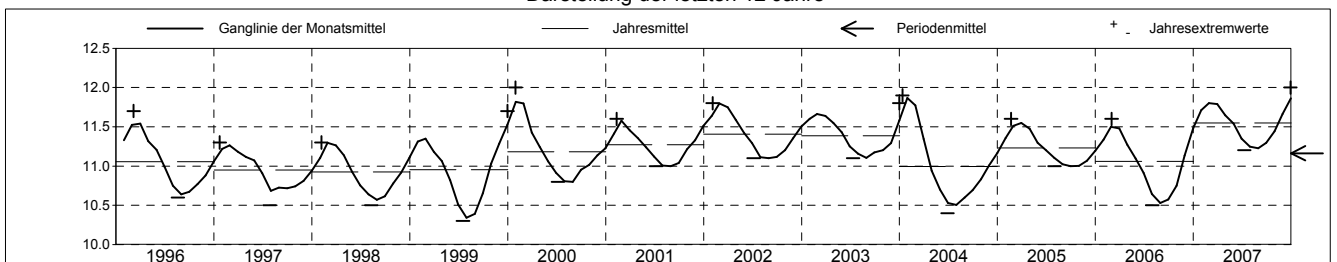
Koordinaten: 629280.00 / 256847.50

2007	Januar	Februar	März	April	Mai	Juni	Juli	August	September	Oktober	November	Dezember	
1	11.6 -	11.8 +	11.8 +	11.7 +	11.6 +	11.5 +	11.3 +	11.2 -	11.2 -	11.3 -	11.5 -	11.8 -	1
2	11.6 -	11.8 +	11.8 +	11.7 +	11.6 +	11.5 +	11.3 +	11.2 -	11.3 -	11.3 -	11.6 -	11.8 -	2
3	11.7	11.8 +	11.8 +	11.7 +	11.6 +	11.5 +	11.3 +	11.2 -	11.3 -	11.3 -	11.6 -	11.8 -	3
4	11.7	11.8 +	11.8 +	11.7 +	11.6 +	11.4	11.3 +	11.2 -	11.3 -	11.3 -	11.6 -	11.8 -	4
5	11.7	11.8 +	11.8 +	11.7 +	11.6 +	11.4	11.3 +	11.2 -	11.3 -	11.3 -	11.6 -	11.8 -	5
Tagesmittel													
6	11.7	11.8 +	11.8 +	11.7 +	11.6 +	11.4	11.3 +	11.2 -	11.2 -	11.3 -	11.6 -	11.8 -	6
7	11.7	11.8 +	11.8 +	11.7 +	11.6 +	11.4	11.3 +	11.2 -	11.3 -	11.3 -	11.6 -	11.8 -	7
8	11.7	11.8 +	11.8 +	11.7 +	11.6 +	11.4	11.3 +	11.2 -	11.3 -	11.4	11.6 -	11.8 -	8
9	11.7	11.8 +	11.8 +	11.7 +	11.6 +	11.4	11.2 -	11.3 +	11.3	11.4	11.6 -	11.8 -	9
10	11.7	11.8 +	11.8 +	11.6 -	11.6 +	11.4	11.3 +	11.2 -	11.3 -	11.4	11.6 -	11.8 -	10
11	11.7	11.8 +	11.8 +	11.7 +	11.6 +	11.3 -	11.2 -	11.2 -	11.3 -	11.5 +	11.6 -	11.8 -	11
12	11.7	11.8 +	11.8 +	11.6 -	11.6 +	11.4	11.3 +	11.2 -	11.3 -	11.4	11.6 -	11.8 -	12
13	11.7	11.8 +	11.8 +	11.7 +	11.5 -	11.3 -	11.3 +	11.3 +	11.3	11.5 +	11.7	11.9	13
14	11.7	11.8 +	11.8 +	11.7 +	11.6 +	11.4	11.3 +	11.2 -	11.3 -	11.5 +	11.7	11.9	14
15	11.7	11.8 +	11.8 +	11.7 +	11.5 -	11.3 -	11.2 -	11.3 +	11.3	11.5 +	11.7	11.9	15
Max. +													
16	11.7	11.8 +	11.8 +	11.7 +	11.5 -	11.3 -	11.3 +	11.2 -	11.3 -	11.5 +	11.7	11.8 -	16
17	11.7	11.8 +	11.8 +	11.6 -	11.5 -	11.3 -	11.2 -	11.2 -	11.3 -	11.5 +	11.7	11.9	17
18	11.7	11.8 +	11.8 +	11.6 -	11.5 -	11.3 -	11.2 -	11.3 +	11.3 -	11.5 +	11.7	11.9	18
19	11.7	11.8 +	11.8 +	11.6 -	11.5 -	11.3 -	11.3 +	11.3 +	11.3	11.5 +	11.7	11.9	19
20	11.7	11.8 +	11.8 +	11.6 -	11.5 -	11.3 -	11.2 -	11.2 -	11.3 -	11.5 +	11.7	11.9	20
Min. -													
21	11.7	11.8 +	11.8 +	11.6 -	11.5 -	11.3 -	11.2 -	11.2 -	11.3 -	11.5 +	11.7	11.9	21
22	11.7	11.8 +	11.8 +	11.6 -	11.5 -	11.3 -	11.2 -	11.3 +	11.3 -	11.5 +	11.7	11.9	22
23	11.7	11.8 +	11.8 +	11.6 -	11.5 -	11.3 -	11.2 -	11.3 +	11.3 -	11.5 +	11.7	11.9	23
24	11.7	11.8 +	11.8 +	11.6 -	11.5 -	11.3 -	11.2 -	11.2 -	11.3 -	11.5 +	11.7	11.9	24
25	11.7	11.8 +	11.8 +	11.6 -	11.5 -	11.3 -	11.2 -	11.2 -	11.3 -	11.5 +	11.7	11.9	25
26	11.8 +	11.8 +	11.8 +	11.6 -	11.5 -	11.3 -	11.2 -	11.2 -	11.3 -	11.5 +	11.7	11.9	26
27	11.8 +	11.8 +	11.7 -	11.6 -	11.5 -	11.3 -	11.2 -	11.2 -	11.3 -	11.5 +	11.8 +	11.9	27
28	11.8 +	11.8 +	11.8 +	11.6 -	11.5 -	11.3 -	11.2 -	11.2 -	11.3 -	11.5 +	11.8 +	12.0 +	28
29	11.8 +		11.7 -	11.6 -	11.5 -	11.3 -	11.2 -	11.2 -	11.3 -	11.5 +	11.7	11.9	29
30	11.7		11.7 -	11.6 -	11.5 -	11.3 -	11.2 -	11.2 -	11.4 +	11.5 +	11.7	11.9	30
31	11.8 +		11.7 -		11.5 -		11.2 -	11.3 +		11.5 +		11.9	31
Monatsmittel	11.7	11.8	11.8	11.6	11.5	11.4	11.2 -	11.2 -	11.3	11.4	11.7	11.9 +	
Maximum	11.8	11.8	11.8	11.7	11.6	11.5	11.3 -	11.3 -	11.4	11.5	11.8	12.0 +	
Datum	26.01	01.02	01.03	01.04	01.05	01.06	01.07	09.08	30.09	11.10	27.11	28.12	
Minimum	11.6	11.8 +	11.7	11.6	11.5	11.3	11.2 -	11.2 -	11.2 -	11.3	11.5	11.8 +	
Datum	01.01	01.02	27.03	10.04	13.05	11.06	09.07	01.08	01.09	01.10	01.11	01.12	
Amplitude	0.2	0.0 +	0.1	0.1	0.1	0.2	0.1	0.1	0.2	0.2	0.3	0.2	
Jahr 2007	Mittel	11.5 °C		Maximum	12.0 (28.Dez)		Minimum	11.2 (09.Jul)		Amplitude	0.8 °C		



Periode	1996 - 2007												
Monatsmittel	11.5	11.6 +	11.5	11.3	11.2	11.0	10.8 -	10.8 -	10.9	11.0	11.2	11.3	
Maximum	12.0 +	12.0 +	11.8	11.7	11.6	11.5	11.3 -	11.3 -	11.4	11.5	11.8	12.0 +	
Jahr	2000	2000	2002	2002	2007	2007	2007	2007	2007	2007	2007	2007	
Minimum	11.0	11.2 +	11.1	10.8	10.6	10.4	10.3 -	10.3 -	10.5	10.6	10.8	10.9	
Jahr	1998	1997	1997	2004	1999	1999	1999	1999	1999	2006	1996	1997	
Amplitude	0.3	0.4	0.5 +	0.4	0.4	0.2 -	0.3	0.2 -	0.3	0.3	0.4	0.4	
Jahr	2000	2000	2004	2006	1999	1996	1997	1999	1999	1999	2006	2003	
Periode	Mittel	11.2 °C		Maximum	12.0 (29.Jan 2000)		Minimum	10.3 (17.Jul 1999)		Amplitude	1.7 °C		

Darstellung der letzten 12 Jahre



Grundwasserspiegel im Ergolztal

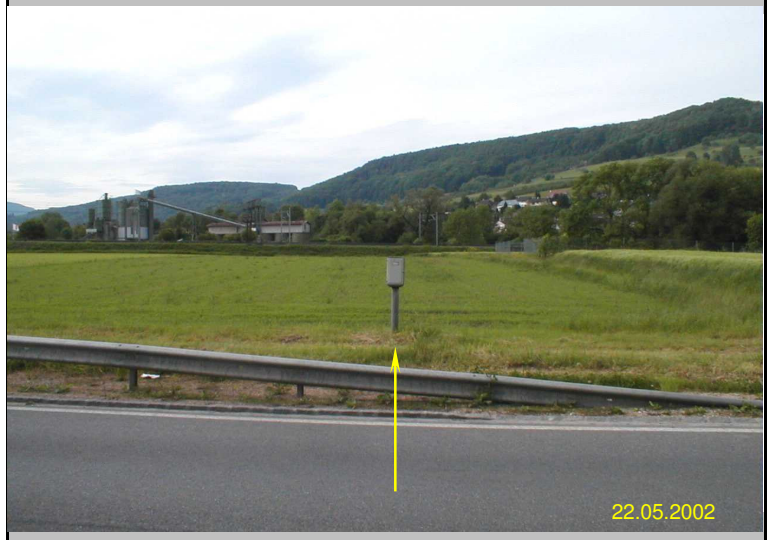
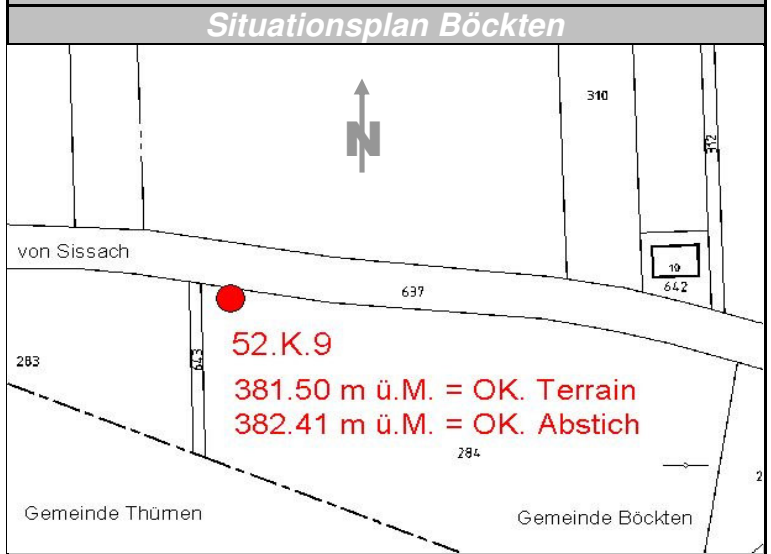
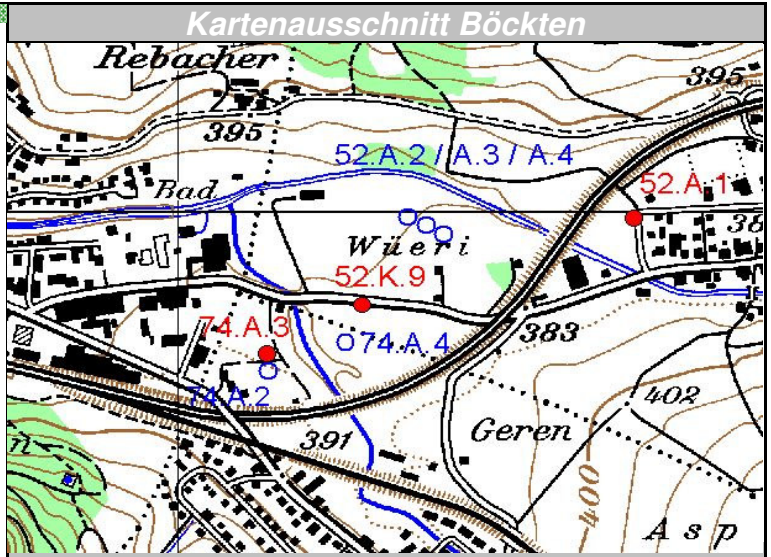
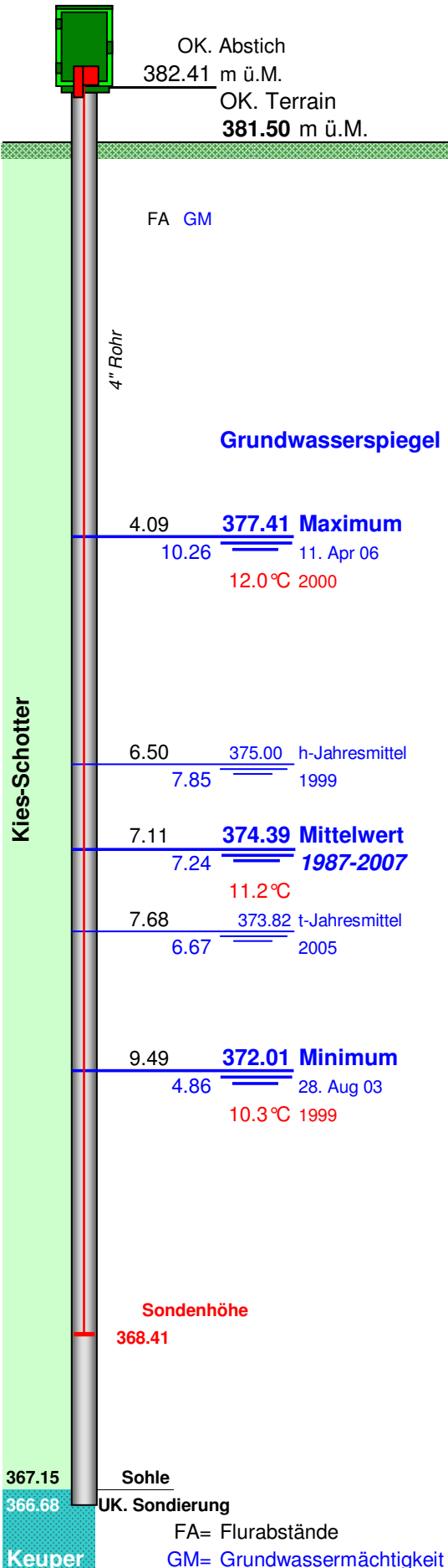
Station 52.K.9
OP 165553

Böckten BL 279

Bruggmatt

Koordinaten: 629'279.98 / 256'847.49

Messwerte: Grundwasserspiegel
Temperatur



FA= Flurabstände
GM= Grundwassermächtigkeit in m