

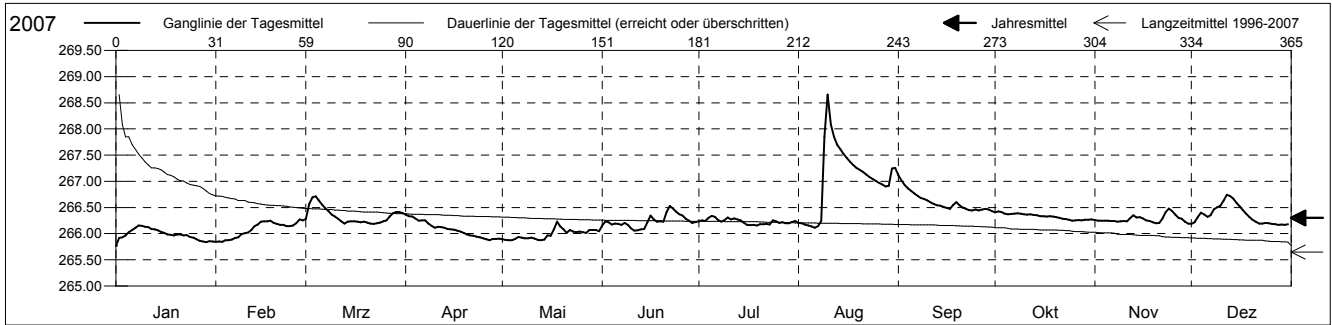
**Grundwasserstände**



**Birstal**  
 Münchenstein 20.K.60 SBB-Birsbrücke  
 Abstichpunkt: 271.91 m ü.M.  
 OK Terrain: 271.51 m ü.M.

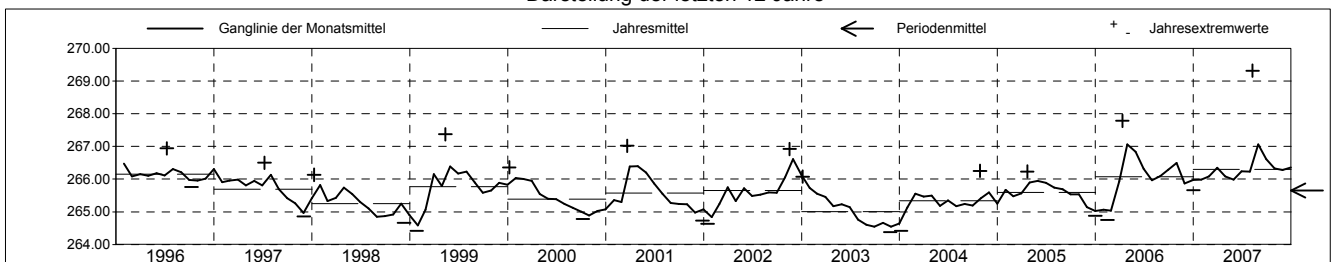
**Amt für Umweltschutz und Energie**  
**Kanton Basel-Landschaft**  
 Koordinaten: 613521.19 / 263022.47

2007	Januar	Februar	März	April	Mai	Juni	Juli	August	September	Oktober	November	Dezember	
1	265.77 -	265.84 -	266.28	266.37 +	265.89	266.15	266.23	266.20	267.12 +	266.41	266.26	266.19	1
2	265.92	265.85	266.58	266.33	265.88	266.23	266.25	266.20	267.01	266.43 +	266.25	266.22	2
3	265.93	265.84 -	266.70	266.33	265.88	266.22	266.24	266.18	266.93	266.41	266.25	266.31	3
4	265.97	265.87	266.71 +	266.29	265.87 -	266.17	266.30	266.15	266.86	266.38	266.25	266.40	4
5	266.03	265.87	266.63	266.25	265.90	266.19	266.34 +	266.14	266.82	266.37	266.25	266.36	5
Tagesmittel													
6	266.07	265.89	266.55	266.26	265.94	266.19	266.32	266.12 -	266.77	266.38	266.24	266.32	6
7	266.11	265.92	266.49	266.25	265.92	266.17	266.26	266.15	266.72	266.38	266.24	266.35	7
8	266.15 +	265.93	266.43	266.19	265.91	266.20	266.23	266.24	266.68	266.39	266.23	266.46	8
9	266.15 +	265.99	266.36	266.15	265.91	266.17	266.26	267.85	266.67	266.38	266.24	266.51	9
10	266.13	266.01	266.33	266.11	265.92	266.10	266.31	268.66 +	266.63	266.37	266.24	266.54	10
11	266.13	266.02	266.28	266.13	265.90	266.06 -	266.27	268.09	266.60	266.36	266.24	266.63	11
12	266.09	266.07	266.24	266.12	265.88	266.06 -	266.29	267.85	266.57	266.37	266.30	266.74 +	12
13	266.08	266.14	266.19	266.11	265.88	266.08	266.27	267.70	266.54	266.36	266.35	266.72	13
14	266.07	266.18	266.23	266.09	265.89	266.09	266.25	267.61	266.54	266.35	266.31	266.67	14
Max. +	266.03	266.23	266.23	266.08	265.97	266.22	266.21	267.52	266.51	266.33	266.32	266.59	15
16	266.02	266.23	266.23	266.08	265.96	266.35	266.17	267.44	266.50	266.33	266.29	266.52	16
17	265.98	266.24	266.23	266.06	266.08	266.27	266.16	267.37	266.47	266.33	266.25	266.45	17
18	265.98	266.24	266.22	266.04	266.23 +	266.23	266.17	267.31	266.55	266.34	266.24	266.38	18
19	265.97	266.20	266.23	266.02	266.14	266.23	266.15 -	267.26	266.60	266.33	266.22	266.32	19
Min. -	265.98	266.18	266.21	265.99	266.08	266.23	266.18	267.22	266.54	266.31	266.20	266.27	20
20													
21	265.99	266.17	266.19	265.96	266.02	266.41	266.18	267.18	266.50	266.30	266.20	266.23	21
22	265.97	266.17	266.18 -	265.96	266.07	266.53 +	266.19	267.13	266.48	266.29	266.29	266.19	22
23	265.97	266.14	266.20	265.94	266.04	266.48	266.17	267.09	266.45	266.28	266.41	266.20	23
24	265.94	266.15	266.21	265.93	266.03	266.42	266.25	267.04	266.44	266.27	266.48 +	266.20	24
25	265.92	266.15	266.24	265.91	266.04	266.37	266.23	267.00	266.46	266.25 -	266.43	266.20	25
26	265.89	266.20	266.26	265.89	266.03	266.34	266.21	266.97	266.44	266.26	266.37	266.19	26
27	265.86	266.27 +	266.33	265.87 -	266.02	266.29	266.22	266.94	266.46	266.26	266.30	266.18	27
28	265.85	266.25	266.39	265.90	266.07	266.25	266.20	266.91	266.48	266.26	266.28	266.17 -	28
29	265.84		266.41	265.90	266.07	266.21	266.20	266.91	266.46	266.27	266.23	266.17 -	29
30	265.85		266.42	265.90	266.07	266.22	266.22	267.24	266.43 -	266.27	266.19 -	266.17 -	30
31	265.85		266.39		266.05		266.24	267.26		266.27		266.18	31
Monatsmittel	265.98 -	266.08	266.34	266.08	265.98 -	266.24	266.23	267.06 +	266.61	266.33	266.28	266.36	
Maximum	266.19 -	266.29	266.78	266.38	266.27	266.63	266.38	269.31 +	267.15	266.45	266.52	266.77	
Datum	08.01	27.02	03.03	01.04	18.05	21.06	05.07	09.08	01.09	02.10	24.11	12.12	
Amplitude	0.53	0.50	0.64	0.56	0.45	0.62	0.27	3.25	0.73	0.23	0.37	0.65	
Jahr 2007	Mittel	266.30 m ü.M.		Maximum	269.31 (09.Aug)		Minimum	265.66 (01.Jan)		Amplitude	3.65 m		



Periode	1996 - 2007												
Monatsmittel	265.55	265.55	265.88 +	265.87	265.88 +	265.75	265.66	265.61	265.49 -	265.53	265.51	265.50	
Maximum	266.81	266.29 -	267.02	267.78	267.37	266.66	266.94	269.31 +	267.15	266.99	266.92	266.77	
Jahr	1996	2007	2001	2006	1999	2006	1996	2007	2007	2006	2002	2007	
Minimum	264.42	264.52	265.09	265.09	265.10 +	264.93	264.62	264.54	264.42	264.42	264.38 -	264.52	
Jahr	2004	1999	2001	2003	2003	2003	2003	2003	2003	2003	2003	2003	
Amplitude	1.28	1.70	1.93	1.50	1.72	0.62 -	0.93	3.25 +	1.18	1.21	0.96	1.25	
Jahr	2004	1999	2001	2006	1999	2007	1996	2007	2006	2004	2004	1997	
Periode	Mittel	265.65 m ü.M.		Maximum	269.31 (09.Aug 2007)		Minimum	264.38 (27.Nov 2003)		Amplitude	4.93 m		

Darstellung der letzten 12 Jahre



**Grundwassertemperatur**



Birstal

Münchenstein

20.K.60

SBB-Birsbrücke

**Amt für Umweltschutz und Energie**

**Kanton Basel-Landschaft**

Abstichpunkt:

271.91

m ü.M.

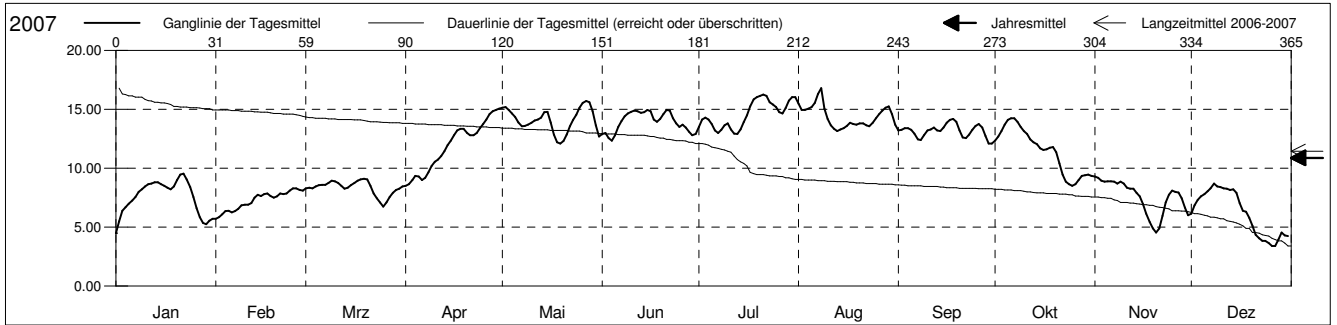
Koordinaten: 613521.19 / 263022.47

OK Terrain:

271.51

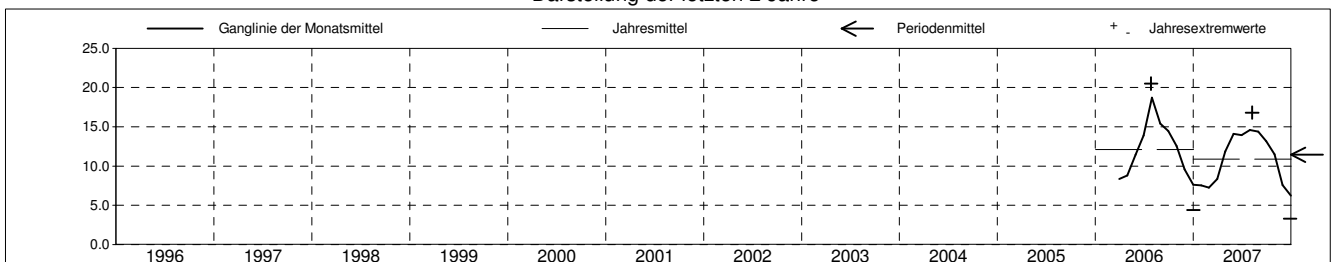
m ü.M.

2007	Januar	Februar	März	April	Mai	Juni	Juli	August	September	Oktober	November	Dezember	
1	4.5 -	5.7 -	8.3	8.5 -	15.1	12.9	13.5	15.5	13.2	12.4	9.3 +	6.2	1
2	5.5	5.9	8.4	8.6	15.2	13.0	14.1	14.9	13.3	12.7	9.2	6.8	2
3	6.4	6.1	8.3	9.0	14.9	12.5	14.3	14.9	13.4	13.1	8.9	7.3	3
4	6.7	6.4	8.4	9.4	14.6	12.4 -	14.1	15.1	13.4	13.7	8.9	7.6	4
5	7.0	6.4	8.6	9.3	14.4	12.8	13.8	15.2	13.3	14.1	8.9	7.8	5
Tagesmittel													
6	7.3	6.3	8.6	9.0	13.9	13.5	13.2	15.5	12.9	14.3 +	8.9	8.1	6
7	7.6	6.4	8.6	9.2	13.6	14.0	13.0	16.3	12.5	14.3 +	8.9	8.3	7
8	8.0	6.6	8.8	9.6	13.6	14.4	13.3	16.8 +	12.4	14.0	8.7	8.7 +	8
9	8.2	6.9	8.9	10.2	13.7	14.6	13.6	15.0	12.8	13.5	8.9	8.4	9
10	8.4	6.9	8.9	10.6	13.9	14.8	13.8	14.2	13.2	13.1	8.7	8.4	10
11	8.6	6.9	8.8	10.8	14.1	14.9	13.3	13.6	13.3	12.9	8.4	8.3	11
12	8.7	7.1	8.5	11.0	14.1	14.9	12.9 -	13.4	13.4	12.5	8.3	8.3	12
13	8.8	7.5	8.3	11.5	14.3	14.7	12.9 -	13.1 -	13.2	12.2	8.3	8.1	13
14	8.8	7.8	8.4	12.0	14.8	14.8	13.3	13.3	13.1	12.1	7.9	8.2	14
15	8.6	7.6	8.6	12.4	14.8	15.0 +	13.9	13.4	13.4	11.7	7.6	7.9	15
Max. +													
16	8.5	7.8	8.8	12.8	13.9	14.9	14.5	13.6	13.9	11.6	6.9	7.1	16
17	8.4	7.9	8.9	13.2	12.9	14.1	15.3	13.9	14.1	11.6	6.2	6.4	17
18	8.2	7.6	9.1 +	13.4	12.2	13.9	15.9	13.8	14.2 +	11.8	5.4	6.3	18
19	8.5	7.5	9.1 +	13.4	12.1 -	14.2	16.0	13.7	14.0	11.8	4.9	5.8	19
20	9.0	7.6	9.1 +	13.0	12.3	14.6	16.2	13.8	13.2	11.4	4.6 -	5.1	20
Min. -													
21	9.4	7.9	8.5	12.8	12.9	14.9	16.3 +	13.8	12.6	10.4	4.9	4.3	21
22	9.6 +	7.8	7.8	12.8	13.6	14.9	16.2	13.6	12.6	9.4	5.9	4.1	22
23	9.0	7.9	7.4	13.0	14.1	14.3	15.6	13.6	12.9	8.9	7.1	3.8	23
24	8.4	8.1	7.1	13.4	14.5	13.8	15.4	13.9	13.3	8.6	7.8	3.8	24
25	7.6	8.3 +	6.8 -	13.8	15.1	13.5	15.2	14.3	13.6	8.5 -	8.1	3.7	25
26	6.6	8.3 +	7.1	14.1	15.6	13.7	14.8	14.6	13.8	8.6	8.0	3.4 -	26
27	5.8	8.1	7.6	14.6	15.7 +	13.4	14.6	14.9	13.5	9.0	7.9	3.4 -	27
28	5.4	8.1	7.9	14.9	15.6	13.1	15.1	15.1	12.8	9.4	7.4	3.9	28
29	5.3	8.1	8.1	14.9	14.9	12.8	15.8	15.3	12.1 -	9.4	6.7	4.6	29
30	5.6	8.3	15.1 +	13.6	12.9	16.0	14.6	14.6	12.1 -	9.4	6.0	4.3	30
31	5.7	8.4	8.4	12.7			16.0	13.7		9.4		4.3	31
Monatsmittel	7.5	7.3	8.3	11.9	14.1	13.9	14.6 +	14.4	13.2	11.5	7.6	6.2 -	
Maximum	9.6	8.3 -	9.1	15.1	15.7	15.1	16.3	16.8 +	14.2	14.3	9.3	8.8	
Datum	22.01	25.02	18.03	30.04	27.05	15.06	21.07	08.08	18.09	06.10	01.11	08.12	
Minimum	4.4	5.7	6.7	8.5	12.0	12.3	12.8	13.1 +	12.0	8.5	4.5	3.3 -	
Datum	01.01	01.02	25.03	01.04	19.05	04.06	13.07	13.08	30.09	25.10	20.11	27.12	
Amplitude	5.2	2.6	2.4	6.6	3.7	2.8	3.5	3.7	2.2	5.8	4.8	5.5	
Jahr 2007	Mittel	10.9 °C		Maximum	16.8 (08.Aug)		Minimum	3.3 (27.Dez)		Amplitude	13.5 °C		



Periode	2006 - 2007												
Monatsmittel	7.5	7.3	8.3	10.3	12.8	13.9	16.6 +	14.9	13.8	12.0	8.6	6.9 -	
Maximum	9.6	8.3 -	11.9	15.1	15.7	16.1	20.5 +	19.3	16.0	14.3	12.4	9.8	
Jahr	2007	2007	2006	2007	2007	2006	2006	2006	2006	2007	2006	2006	
Minimum	4.4	5.7	4.7	7.5	10.3	10.5	12.8	13.1 +	12.0	8.5	4.5	3.3 -	
Jahr	2007	2006	2006	2006	2006	2006	2007	2007	2007	2007	2007	2007	
Amplitude	5.2	2.6 -	7.2 +	6.6	3.7	5.6	4.2	5.7	2.9	5.8	4.8	5.5	
Jahr	2007	2007	2006	2007	2007	2006	2006	2006	2006	2007	2007	2007	
Periode	Mittel	11.4 °C		Maximum	20.5 (27.Jul 2006)		Minimum	3.3 (27.Dez 2007)		Amplitude	17.2 °C		

Darstellung der letzten 2 Jahre



# Grundwasserspiegel im Birstal

Station 20.K.60 Münchenstein

SBB-Birsbrücke

Koordinaten: 613'521.18 / 263'022.47

Messwerte: Grundwasserspiegel  
Temperatur

