

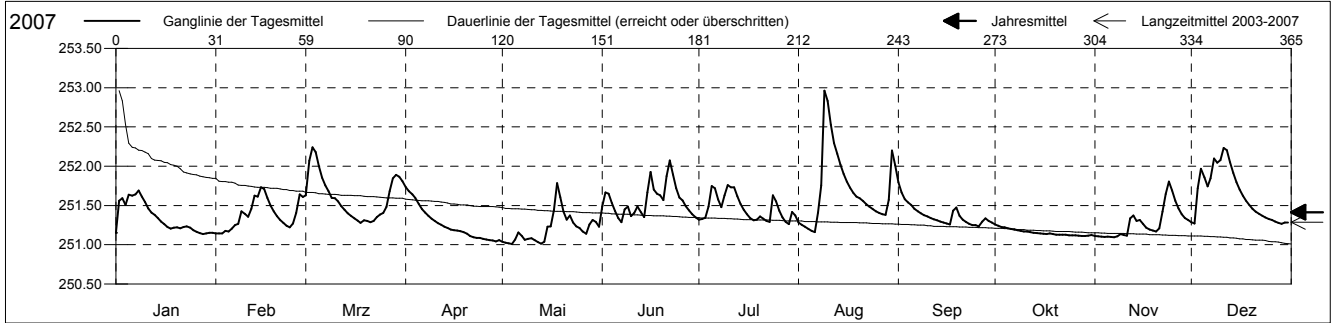
**Grundwasserstände**



**Birstal**  
 Birsfelden 17.O.01 Fröschenweg  
 Abstichpunkt: 256.11 m ü.M.  
 OK Terrain: 255.50 m ü.M.

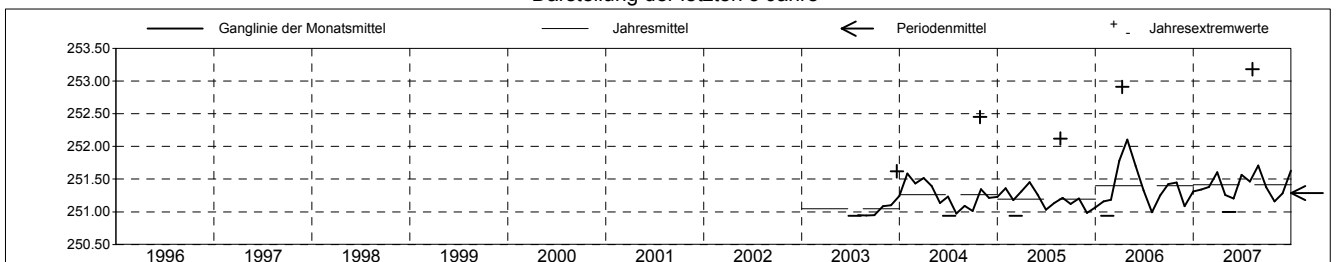
**Amt für Umweltschutz und Energie**  
**Kanton Basel-Landschaft**  
 Koordinaten: 613917.00 / 266330.00

2007	Januar	Februar	März	April	Mai	Juni	Juli	August	September	Oktober	November	Dezember	
1	251.15	251.14 -	251.63	251.73 +	251.04	251.49	251.32	251.29	251.80 +	251.26 +	251.11	251.29	1
2	251.56	251.14 -	252.07	251.68	251.03	251.67	251.33	251.25	251.67	251.24	251.11	251.27	2
3	251.59	251.14 -	252.24 +	251.64	251.02	251.65	251.34	251.23	251.58	251.23	251.10 -	251.72	3
4	251.51	251.18	252.18	251.59	251.01 -	251.53	251.49	251.20	251.54	251.22	251.10 -	251.97	4
5	251.64	251.17	252.00	251.52	251.07	251.43	251.75	251.18	251.51	251.21	251.10 -	251.86	5
Tagesmittel													
6	251.63	251.20	251.85	251.46	251.15	251.34	251.72	251.16 -	251.46	251.20	251.10 -	251.75	6
7	251.64	251.25	251.76	251.41	251.11	251.29 -	251.58	251.41	251.43	251.19	251.10 -	251.85	7
8	251.69 +	251.27	251.68	251.37	251.06	251.45	251.48	251.76	251.40	251.18	251.11	252.10	8
9	251.61	251.42	251.60	251.33	251.07	251.49	251.63	252.96 +	251.37	251.18	251.13	252.04	9
10	251.54	251.39	251.59	251.30	251.08	251.36	251.76 +	252.83	251.36	251.17	251.12	252.08	10
11	251.46	251.36	251.55	251.28	251.06	251.40	251.73	252.53	251.34	251.17	251.12	252.23 +	11
12	251.41	251.46	251.49	251.25	251.03	251.49	251.73	252.30	251.32	251.16	251.34	252.20	12
13	251.38	251.62	251.44	251.23	251.01 -	251.41	251.62	252.16	251.31	251.15	251.37	252.05	13
14	251.34	251.61	251.40	251.21	251.04	251.35	251.52	252.02	251.29	251.15	251.30	251.91	14
Max. +	251.30	251.73 +	251.37	251.20	251.23	251.66	251.45	251.90	251.28	251.14	251.32	251.80	15
16	251.26	251.71	251.34	251.19	251.23	251.93	251.39	251.81	251.27	251.14	251.27	251.70	16
17	251.23	251.60	251.31	251.18	251.44	251.70	251.34	251.73	251.26	251.14	251.22	251.62	17
18	251.20	251.50	251.28 -	251.17	251.78 +	251.65	251.31	251.66	251.43	251.14	251.19	251.56	18
19	251.22	251.43	251.31	251.16	251.61	251.63	251.32	251.61	251.48	251.14	251.18	251.51	19
Min. -	251.22	251.37	251.30	251.14	251.42	251.57	251.36	251.59	251.37	251.13	251.17	251.46	20
21	251.21	251.32	251.29	251.11	251.32	251.87	251.33	251.56	251.32	251.13	251.21	251.42	21
22	251.22	251.28	251.30	251.09	251.37	252.07 +	251.30	251.52	251.29	251.13	251.42	251.39	22
23	251.23	251.24	251.35	251.09	251.28	251.90	251.29	251.49	251.27	251.13	251.65	251.37	23
24	251.22	251.22	251.38	251.09	251.24	251.72	251.63	251.45	251.25	251.12	251.81 +	251.35	24
25	251.19	251.27	251.41	251.08	251.21	251.60	251.55	251.43	251.25	251.12	251.69	251.33	25
26	251.16	251.40	251.48	251.07	251.17	251.56	251.43	251.40	251.24 -	251.12	251.56	251.31	26
27	251.15	251.64	251.68	251.06	251.14	251.49	251.35	251.39	251.30	251.11 -	251.46	251.30	27
28	251.14 -	251.61	251.84	251.06	251.26	251.44	251.29	251.38	251.34	251.11 -	251.39	251.28	28
29	251.14 -		251.89	251.04 -	251.32	251.39	251.26 -	251.57	251.30	251.11 -	251.34	251.26 -	29
30	251.15		251.87	251.06	251.29	251.35	251.42	252.20	251.28	251.12	251.31	251.28	30
31	251.15		251.81	251.23	251.23	251.35	251.37	252.01	251.28	251.13	251.31	251.28	31
Monatsmittel	251.34	251.38	251.60	251.26	251.20	251.56	251.46	251.71 +	251.38	251.16 -	251.28	251.63	
Maximum	251.72	251.79	252.30	251.77	251.82	252.16	251.79	253.18 +	251.89	251.27 -	251.82	252.28	
Datum	07.01	15.02	03.03	01.04	18.05	21.06	05.07	09.08	01.09	01.10	23.11	11.12	
Amplitude	0.69	0.65	1.03	0.73	0.82	0.89	0.54	2.03	0.66	0.16	0.73	1.03	
Jahr 2007	Mittel	251.42 m ü.M.		Maximum	253.18 (09.Aug)		Minimum	251.00 (14.Mai)		Amplitude	2.18 m		



Periode	2003 - 2007												
Monatsmittel	251.36	251.29	251.55 +	251.55 +	251.33	251.29	251.10 -	251.24	251.18	251.25	251.13	251.30	
Maximum	252.36	251.83	252.46	252.91	252.21	252.16	251.79 -	253.18 +	252.49	252.45	251.82	252.28	
Jahr	2004	2005	2006	2006	2006	2007	2007	2007	2006	2004	2007	2007	
Minimum	251.00	250.94 -	250.94 -	251.04 +	251.00	250.94 -	250.94 -	250.94 -	250.94 -	250.94 -	250.94 -	250.94 -	
Jahr	2004	2006	2005	2007	2007	2005	2003	2003	2003	2003	2005	2005	
Amplitude	1.36	0.87	1.34	1.27	0.86	1.00	0.54 -	2.03 +	1.49	1.51	0.73	1.03	
Jahr	2004	2006	2006	2006	2006	2004	2007	2007	2006	2004	2007	2007	
Periode	Mittel	251.29 m ü.M.		Maximum	253.18 (09.Aug 2007)		Minimum	250.94 (18.Jul 2003)		Amplitude	2.24 m		

Darstellung der letzten 5 Jahre



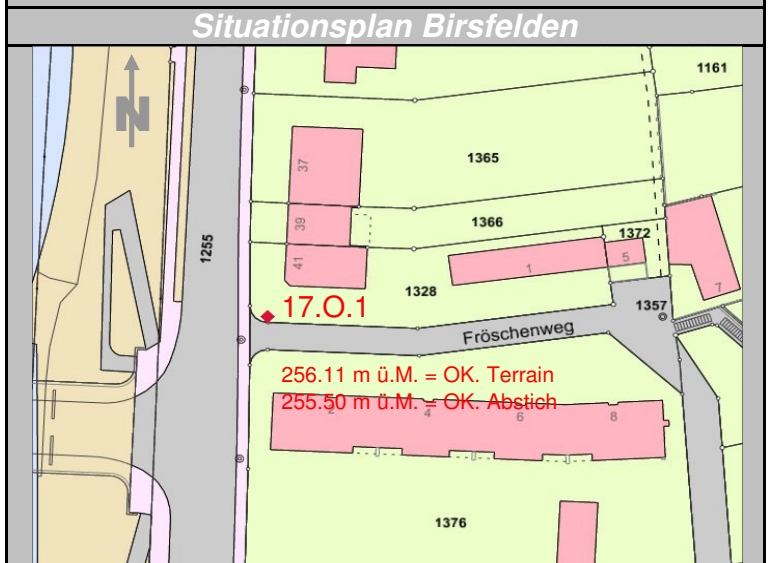
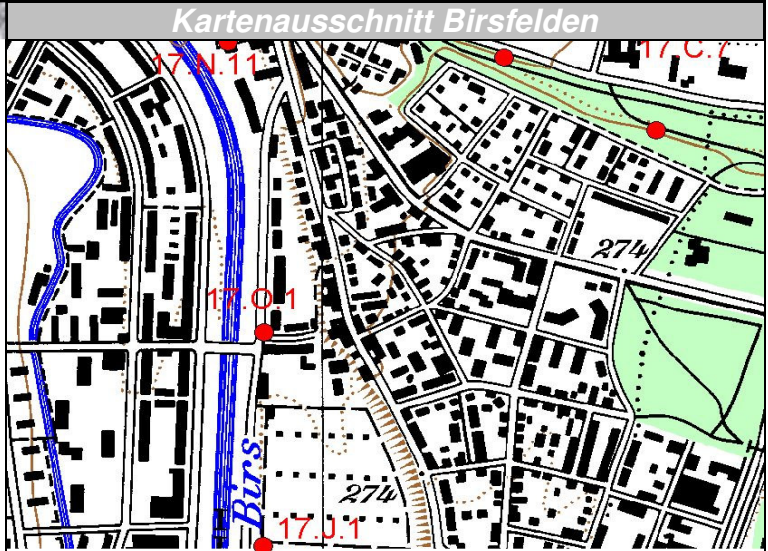
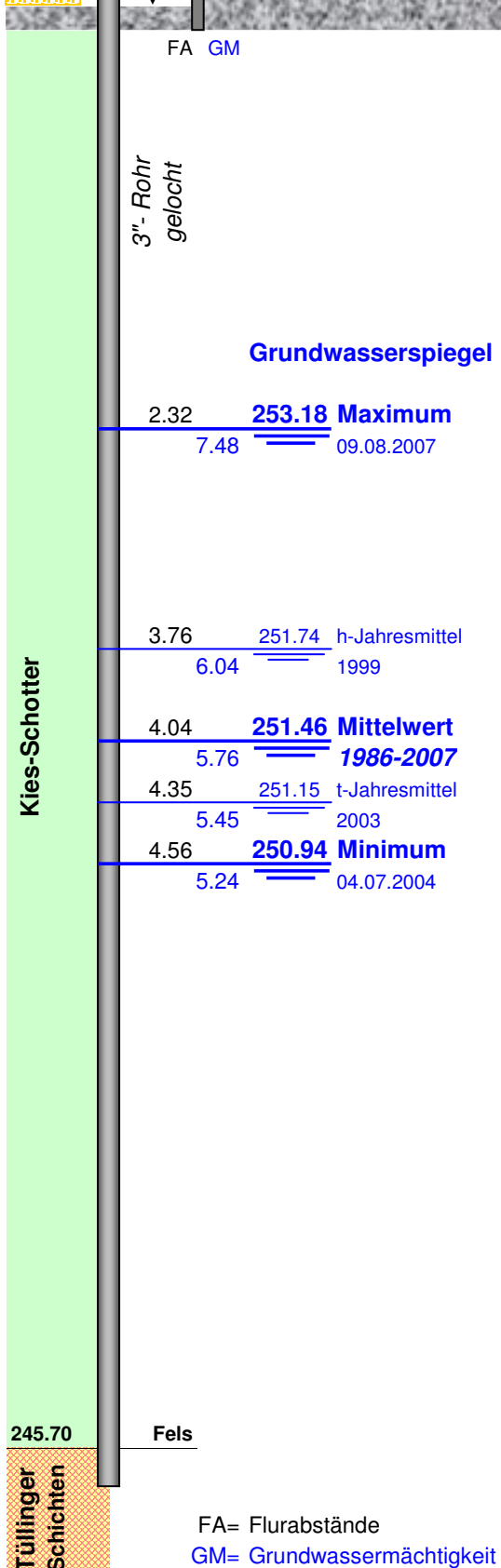
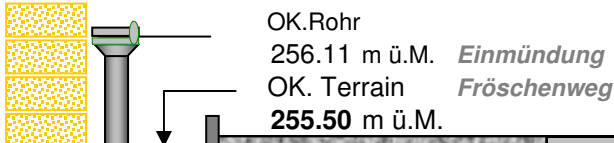
# Grundwasserspiegel im Birstal

Station 17.O.1 Birsfelden

Fröschenweg

Koordinaten: 613'917 / 266'330

Messwerte: Grundwasserspiegel



FA= Flurabstände  
GM= Grundwassermächtigkeit in m