

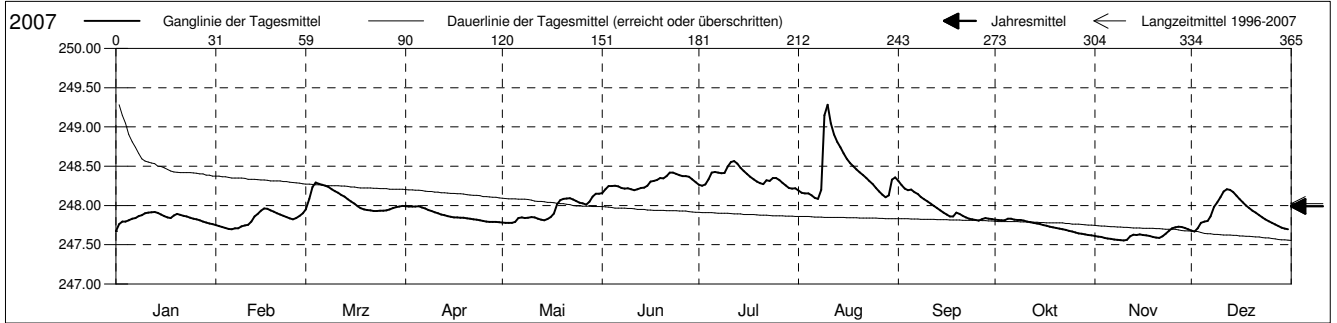
Grundwasserstände



Birstal
 Birsfelden 17.N.35 Rheinparkstrasse
 Abstichpunkt: 256.56 m ü.M.
 OK Terrain: 256.00 m ü.M.

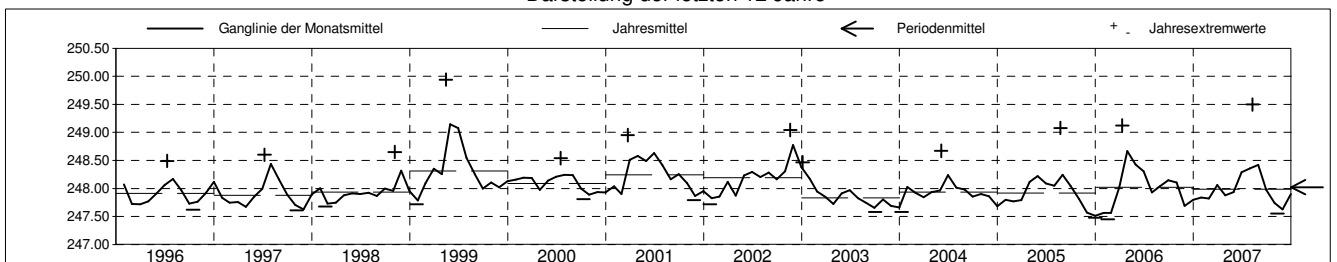
Amt für Umweltschutz und Energie
Kanton Basel-Landschaft
 Koordinaten: 614032.50 / 267370.97

| 2007 | Januar | Februar | März | April | Mai | Juni | Juli | August | September | Oktober | November | Dezember | |
|--------------|----------|---------------|----------|----------|-----------------|----------|----------|-----------------|-----------|-----------|----------|----------|----|
| 1 | 247.67 - | 247.75 | 247.95 | 247.99 + | 247.79 | 248.16 - | 248.27 | 248.19 | 248.31 + | 247.82 | 247.61 | 247.68 | 1 |
| 2 | 247.76 | 247.74 | 248.09 | 247.99 + | 247.78 - | 248.21 | 248.25 | 248.16 | 248.26 | 247.82 | 247.60 | 247.67 - | 2 |
| 3 | 247.79 | 247.72 | 248.24 | 247.99 + | 247.78 - | 248.25 | 248.27 | 248.15 | 248.22 | 247.81 | 247.60 | 247.71 | 3 |
| 4 | 247.80 | 247.71 | 248.29 + | 247.99 + | 247.78 - | 248.25 | 248.33 | 248.16 | 248.20 | 247.81 | 247.59 | 247.78 | 4 |
| 5 | 247.81 | 247.70 - | 248.28 | 247.99 + | 247.79 | 248.25 | 248.42 | 248.13 | 248.20 | 247.83 + | 247.58 | 247.80 | 5 |
| Tagesmittel | | | | | | | | | | | | | |
| 6 | 247.83 | 247.70 - | 248.26 | 247.98 | 247.84 | 248.24 | 248.43 | 248.10 | 248.17 | 247.83 + | 247.57 | 247.80 | 6 |
| 7 | 247.84 | 247.71 | 248.25 | 247.96 | 247.85 | 248.22 | 248.42 | 248.08 - | 248.14 | 247.82 | 247.57 | 247.86 | 7 |
| 8 | 247.86 | 247.71 | 248.23 | 247.94 | 247.84 | 248.21 | 248.41 | 248.20 | 248.11 | 247.82 | 247.56 | 247.98 | 8 |
| 9 | 247.88 | 247.73 | 248.21 | 247.93 | 247.85 | 248.22 | 248.41 | 249.15 | 248.08 | 247.81 | 247.56 | 248.04 | 9 |
| 10 | 247.90 | 247.75 | 248.18 | 247.91 | 247.85 | 248.21 | 248.50 | 249.28 + | 248.05 | 247.81 | 247.55 - | 248.11 | 10 |
| 11 | 247.91 | 247.76 | 248.16 | 247.90 | 247.85 | 248.19 | 248.55 | 249.05 | 248.02 | 247.80 | 247.56 | 248.18 | 11 |
| 12 | 247.91 | 247.79 | 248.14 | 247.89 | 247.83 | 248.21 | 248.57 + | 248.91 | 247.99 | 247.79 | 247.61 | 248.21 + | 12 |
| 13 | 247.92 + | 247.86 | 248.11 | 247.88 | 247.82 | 248.22 | 248.54 | 248.81 | 247.97 | 247.78 | 247.63 | 248.20 | 13 |
| 14 | 247.91 | 247.89 | 248.08 | 247.87 | 247.81 | 248.23 | 248.48 | 248.74 | 247.94 | 247.77 | 247.62 | 248.17 | 14 |
| Max. + | 247.88 | 247.93 | 248.05 | 247.86 | 247.83 | 248.25 | 248.44 | 248.66 | 247.91 | 247.76 | 247.63 | 248.13 | 15 |
| 16 | 247.86 | 247.96 + | 248.02 | 247.85 | 247.85 | 248.31 | 248.40 | 248.60 | 247.88 | 247.75 | 247.63 | 248.08 | 16 |
| 17 | 247.85 | 247.96 + | 247.99 | 247.85 | 247.90 | 248.31 | 248.36 | 248.54 | 247.86 | 247.74 | 247.62 | 248.04 | 17 |
| 18 | 247.84 | 247.94 | 247.97 | 247.85 | 248.02 | 248.33 | 248.33 | 248.50 | 247.86 | 247.73 | 247.61 | 248.00 | 18 |
| 19 | 247.87 | 247.92 | 247.95 | 247.84 | 248.07 | 248.35 | 248.31 | 248.46 | 247.91 | 247.72 | 247.60 | 247.97 | 19 |
| Min. - | 247.89 | 247.90 | 247.94 | 247.84 | 248.08 | 248.35 | 248.28 | 248.42 | 247.89 | 247.71 | 247.59 | 247.94 | 20 |
| 21 | 247.88 | 247.89 | 247.94 | 247.83 | 248.09 | 248.38 | 248.27 | 248.38 | 247.87 | 247.70 | 247.59 | 247.91 | 21 |
| 22 | 247.87 | 247.87 | 247.93 - | 247.82 | 248.09 | 248.42 + | 248.32 | 248.35 | 247.85 | 247.70 | 247.61 | 247.88 | 22 |
| 23 | 247.86 | 247.85 | 247.93 - | 247.82 | 248.08 | 248.42 + | 248.31 | 248.31 | 247.83 | 247.69 | 247.64 | 247.85 | 23 |
| 24 | 247.85 | 247.84 | 247.93 - | 247.81 | 248.06 | 248.40 | 248.35 | 248.27 | 247.82 | 247.68 | 247.68 | 247.82 | 24 |
| 25 | 247.83 | 247.82 | 247.94 | 247.80 | 248.04 | 248.39 | 248.35 | 248.22 | 247.81 - | 247.67 | 247.71 | 247.80 | 25 |
| 26 | 247.82 | 247.84 | 247.94 | 247.80 | 248.03 | 248.37 | 248.32 | 248.18 | 247.81 - | 247.66 | 247.72 | 247.78 | 26 |
| 27 | 247.81 | 247.87 | 247.95 | 247.79 - | 248.01 | 248.37 | 248.29 | 248.14 | 247.83 | 247.65 | 247.73 + | 247.76 | 27 |
| 28 | 247.80 | 247.90 | 247.97 | 247.79 - | 248.05 | 248.36 | 248.26 | 248.11 | 247.84 | 247.64 | 247.73 + | 247.74 | 28 |
| 29 | 247.78 | | 247.98 | 247.79 - | 248.11 | 248.34 | 248.22 | 248.13 | 247.83 | 247.63 | 247.71 | 247.72 | 29 |
| 30 | 247.77 | | 247.99 | 247.79 - | 248.15 + | 248.30 | 248.21 - | 248.33 | 247.83 | 247.62 - | 247.70 | 247.71 | 30 |
| 31 | 247.76 | | 247.99 | 248.15 + | 248.15 + | | 248.22 | 248.36 | 247.83 | 247.62 - | | 247.70 | 31 |
| Monatsmittel | 247.84 | 247.82 | 248.06 | 247.88 | 247.94 | 248.29 | 248.36 | 248.42 + | 247.98 | 247.74 | 247.62 - | 247.90 | |
| Maximum | 247.92 | 247.96 | 248.30 | 247.99 | 248.16 | 248.43 | 248.58 | 249.50 + | 248.34 | 247.83 | 247.73 - | 248.22 | |
| Datum | 13.01 | 16.02 | 04.03 | 01.04 | 30.05 | 22.06 | 11.07 | 09.08 | 01.09 | 05.10 | 27.11 | 12.12 | |
| Amplitude | 0.27 | 0.27 | 0.38 | 0.21 | 0.38 | 0.28 | 0.38 | 1.42 | 0.54 | 0.22 | 0.18 | 0.55 | |
| Jahr 2007 | Mittel | 247.99 m ü.M. | | Maximum | 249.50 (09.Aug) | | Minimum | 247.55 (10.Nov) | | Amplitude | 1.95 m | | |



| Periode | 1996 - 2007 | | | | | | | | | | | | |
|--------------|-------------|---------------|--------|---------|----------------------|----------|----------|----------------------|--------|-----------|--------|--------|--|
| Monatsmittel | 247.93 | 247.86 - | 248.00 | 248.03 | 248.18 | 248.25 + | 248.18 | 248.11 | 247.98 | 247.93 | 247.91 | 247.91 | |
| Maximum | 248.60 | 249.03 | 248.95 | 249.12 | 249.94 + | 249.38 | 248.79 | 249.50 | 248.63 | 248.51 - | 249.04 | 248.62 | |
| Jahr | 2004 | 1999 | 2001 | 2006 | 1999 | 1999 | 1999 | 2007 | 2002 | 2002 | 2002 | 2002 | |
| Minimum | 247.51 | 247.45 - | 247.58 | 247.62 | 247.72 | 247.74 | 247.76 + | 247.69 | 247.58 | 247.58 | 247.50 | 247.48 | |
| Jahr | 2006 | 2006 | 2006 | 1997 | 2003 | 1998 | 2003 | 2003 | 2003 | 2003 | 2005 | 2005 | |
| Amplitude | 1.02 | 1.25 | 1.15 | 0.66 | 1.64 + | 0.77 | 0.56 - | 1.42 | 0.70 | 0.63 | 0.74 | 0.57 | |
| Jahr | 2004 | 1999 | 2001 | 2006 | 1999 | 1999 | 1996 | 2007 | 2005 | 2006 | 2002 | 1997 | |
| Periode | Mittel | 248.02 m ü.M. | | Maximum | 249.94 (15.Mai 1999) | | Minimum | 247.45 (15.Feb 2006) | | Amplitude | 2.49 m | | |

Darstellung der letzten 12 Jahre



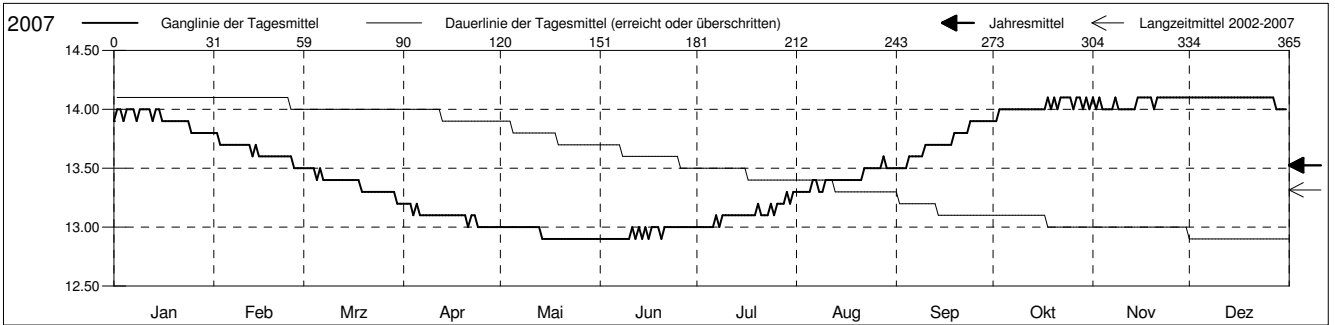
Grundwassertemperatur



Birstal
 Birsfelden 17.N.35 Rheinparkstrasse
 Abstichpunkt: 256.56 m ü.M.
 OK Terrain: 256.00 m ü.M.

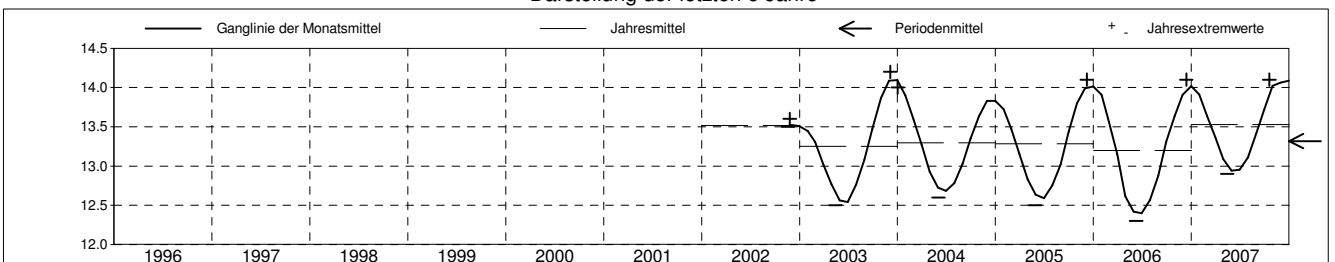
Amt für Umweltschutz und Energie
Kanton Basel-Landschaft
 Koordinaten: 614032.50 / 267370.97

| 2007 | Januar | Februar | März | April | Mai | Juni | Juli | August | September | Oktober | November | Dezember | |
|--------------|--------|---------|--------|---------|---------------|--------|---------|---------------|-----------|-----------|----------|----------|----|
| 1 | 13.9 | 13.8 + | 13.5 + | 13.2 + | 13.0 + | 12.9 - | 13.0 - | 13.3 - | 13.5 - | 13.9 - | 14.1 + | 14.1 + | 1 |
| 2 | 14.0 + | 13.8 + | 13.5 + | 13.2 + | 13.0 + | 12.9 - | 13.0 - | 13.3 - | 13.5 - | 13.9 - | 14.0 + | 14.1 + | 2 |
| 3 | 14.0 + | 13.7 | 13.5 + | 13.2 + | 13.0 + | 12.9 - | 13.0 - | 13.3 - | 13.5 - | 14.0 | 14.1 + | 14.1 + | 3 |
| 4 | 13.9 | 13.7 | 13.5 + | 13.1 | 13.0 + | 12.9 - | 13.0 - | 13.3 - | 13.5 - | 14.0 | 14.0 - | 14.1 + | 4 |
| 5 | 14.0 + | 13.7 | 13.4 | 13.2 + | 13.0 + | 12.9 - | 13.0 - | 13.3 - | 13.6 | 14.0 | 14.0 - | 14.1 + | 5 |
| Tagesmittel | | | | | | | | | | | | | |
| 6 | 14.0 + | 13.7 | 13.5 + | 13.1 | 13.0 + | 12.9 - | 13.0 - | 13.4 | 13.6 | 14.0 | 14.0 - | 14.1 + | 6 |
| 7 | 14.0 + | 13.7 | 13.4 | 13.1 | 13.0 + | 12.9 - | 13.1 | 13.4 | 13.6 | 14.0 | 14.0 - | 14.1 + | 7 |
| 8 | 13.9 | 13.7 | 13.4 | 13.1 | 13.0 + | 12.9 - | 13.0 - | 13.3 - | 13.6 | 14.0 | 14.1 + | 14.1 + | 8 |
| 9 | 14.0 + | 13.7 | 13.4 | 13.1 | 13.0 + | 12.9 - | 13.1 | 13.3 - | 13.6 | 14.0 | 14.0 - | 14.1 + | 9 |
| 10 | 14.0 + | 13.7 | 13.4 | 13.1 | 13.0 + | 12.9 - | 13.1 | 13.4 | 13.7 | 14.0 | 14.0 - | 14.1 + | 10 |
| 11 | 14.0 + | 13.7 | 13.4 | 13.1 | 13.0 + | 13.0 + | 13.1 | 13.4 | 13.7 | 14.0 | 14.0 - | 14.1 + | 11 |
| 12 | 14.0 + | 13.7 | 13.4 | 13.1 | 13.0 + | 12.9 - | 13.1 | 13.4 | 13.7 | 14.0 | 14.0 - | 14.1 + | 12 |
| 13 | 13.9 | 13.6 | 13.4 | 13.1 | 13.0 + | 13.0 + | 13.1 | 13.4 | 13.7 | 14.0 | 14.0 - | 14.1 + | 13 |
| 14 | 14.0 + | 13.7 | 13.4 | 13.1 | 12.9 - | 12.9 - | 13.1 | 13.4 | 13.7 | 14.0 | 14.0 - | 14.1 + | 14 |
| 15 | 14.0 + | 13.6 | 13.4 | 13.1 | 12.9 - | 13.0 + | 13.1 | 13.4 | 13.7 | 14.0 | 14.1 + | 14.1 + | 15 |
| Max. + | | | | | | | | | | | | | |
| 16 | 13.9 | 13.6 | 13.4 | 13.1 | 12.9 - | 12.9 - | 13.1 | 13.4 | 13.7 | 14.0 | 14.1 + | 14.1 + | 16 |
| 17 | 13.9 | 13.6 | 13.4 | 13.1 | 12.9 - | 13.0 + | 13.1 | 13.4 | 13.7 | 14.0 | 14.1 + | 14.1 + | 17 |
| 18 | 13.9 | 13.6 | 13.4 | 13.1 | 12.9 - | 13.0 + | 13.1 | 13.4 | 13.7 | 14.1 + | 14.1 + | 14.1 + | 18 |
| 19 | 13.9 | 13.6 | 13.3 | 13.1 | 12.9 - | 13.0 + | 13.1 | 13.4 | 13.8 | 14.0 | 14.1 + | 14.1 + | 19 |
| 20 | 13.9 | 13.6 | 13.3 | 13.1 | 12.9 - | 12.9 - | 13.2 | 13.4 | 13.8 | 14.1 + | 14.0 - | 14.1 + | 20 |
| Min. - | | | | | | | | | | | | | |
| 21 | 13.9 | 13.6 | 13.3 | 13.0 - | 12.9 - | 13.0 + | 13.1 | 13.4 | 13.8 | 14.0 | 14.1 + | 14.1 + | 21 |
| 22 | 13.9 | 13.6 | 13.3 | 13.1 | 12.9 - | 13.0 + | 13.1 | 13.5 | 13.8 | 14.1 + | 14.1 + | 14.1 + | 22 |
| 23 | 13.9 | 13.6 | 13.3 | 13.1 | 12.9 - | 13.0 + | 13.1 | 13.5 | 13.8 | 14.1 + | 14.1 + | 14.1 + | 23 |
| 24 | 13.9 | 13.6 | 13.3 | 13.0 - | 12.9 - | 13.0 + | 13.2 | 13.5 | 13.9 + | 14.1 + | 14.1 + | 14.1 + | 24 |
| 25 | 13.8 - | 13.6 | 13.3 | 13.0 - | 12.9 - | 13.0 + | 13.1 | 13.5 | 13.9 + | 14.1 + | 14.1 + | 14.1 + | 25 |
| 26 | 13.8 - | 13.5 - | 13.3 | 13.0 - | 12.9 - | 13.0 + | 13.2 | 13.5 | 13.9 + | 14.0 | 14.1 + | 14.1 + | 26 |
| 27 | 13.8 - | 13.5 - | 13.3 | 13.0 - | 12.9 - | 13.0 + | 13.2 | 13.5 | 13.9 + | 14.1 + | 14.1 + | 14.1 + | 27 |
| 28 | 13.8 - | 13.5 - | 13.3 | 13.0 - | 12.9 - | 13.0 + | 13.2 | 13.6 + | 13.9 + | 14.1 + | 14.1 + | 14.0 - | 28 |
| 29 | 13.8 - | | 13.3 | 13.0 - | 12.9 - | 13.0 + | 13.3 + | 13.5 | 13.9 + | 14.0 | 14.1 + | 14.0 - | 29 |
| 30 | 13.8 - | | 13.2 - | 13.0 - | 12.9 - | 13.0 + | 13.2 | 13.5 | 13.9 + | 14.1 + | 14.1 + | 14.0 - | 30 |
| 31 | 13.8 - | | 13.2 - | | 12.9 - | | 13.3 + | 13.5 | | 14.0 | | 14.0 - | 31 |
| Monatsmittel | 13.9 | 13.6 | 13.4 | 13.1 | 12.9 - | 13.0 | 13.1 | 13.4 | 13.7 | 14.0 | 14.1 + | 14.1 + | |
| Maximum | 14.0 | 13.8 | 13.5 | 13.2 | 13.0 - | 13.0 - | 13.3 | 13.6 | 13.9 | 14.1 + | 14.1 + | 14.1 + | |
| Datum | 02.01 | 01.02 | 01.03 | 01.04 | 01.05 | 11.06 | 29.07 | 28.08 | 24.09 | 18.10 | 01.11 | 01.12 | |
| Minimum | 13.8 | 13.5 | 13.2 | 13.0 | 12.9 - | 12.9 - | 13.0 | 13.3 | 13.5 | 13.9 | 14.0 + | 14.0 + | |
| Datum | 25.01 | 26.02 | 30.03 | 21.04 | 14.05 | 01.06 | 01.07 | 01.08 | 01.09 | 01.10 | 02.11 | 28.12 | |
| Amplitude | 0.2 | 0.3 | 0.3 | 0.2 | 0.1 | 0.1 | 0.3 | 0.3 | 0.4 | 0.2 | 0.1 | 0.1 | |
| Jahr 2007 | Mittel | 13.5 °C | | Maximum | 14.1 (18.Okt) | | Minimum | 12.9 (14.Mai) | | Amplitude | 1.2 °C | | |



| Periode | 2002 - 2007 | | | | | | | | | | | | |
|--------------|-------------|---------|-------|---------|--------------------|--------|---------|--------------------|-------|-----------|--------|--------|------|
| Monatsmittel | 13.8 | 13.5 | 13.2 | 12.8 | 12.7 | 12.6 - | 12.8 | 13.1 | 13.5 | 13.8 | 13.9 + | 13.9 + | |
| Maximum | 14.0 | 13.8 | 13.5 | 13.2 | 13.0 - | 13.0 - | 13.3 | 13.6 | 13.9 | 14.1 | 14.1 | 14.2 + | |
| Jahr | 2004 | 2007 | 2004 | 2007 | 2007 | 2007 | 2007 | 2007 | 2007 | 2007 | 2007 | 2003 | 2003 |
| Minimum | 13.4 | 13.2 | 12.9 | 12.4 | 12.4 | 12.3 - | 12.4 | 12.7 | 13.1 | 13.5 + | 13.5 + | 13.5 + | |
| Jahr | 2003 | 2003 | 2003 | 2006 | 2006 | 2006 | 2006 | 2006 | 2004 | 2004 | 2002 | 2002 | |
| Amplitude | 0.3 | 0.3 | 0.5 + | 0.5 + | 0.2 - | 0.2 - | 0.3 | 0.4 | 0.5 + | 0.4 | 0.2 - | 0.2 - | |
| Jahr | 2004 | 2006 | 2006 | 2006 | 2003 | 2005 | 2006 | 2003 | 2005 | 2003 | 2004 | 2003 | |
| Periode | Mittel | 13.3 °C | | Maximum | 14.2 (04.Dez 2003) | | Minimum | 12.3 (08.Jun 2006) | | Amplitude | 1.9 °C | | |

Darstellung der letzten 6 Jahre



Grundwasserspiegel im Birstal

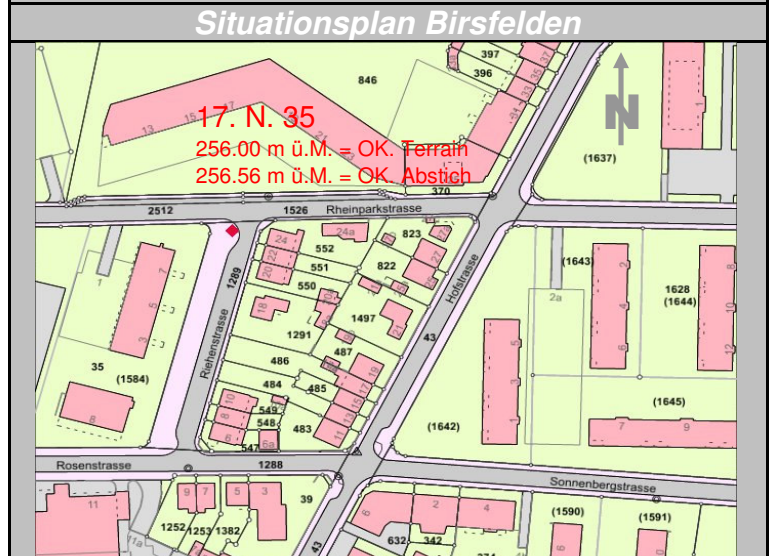
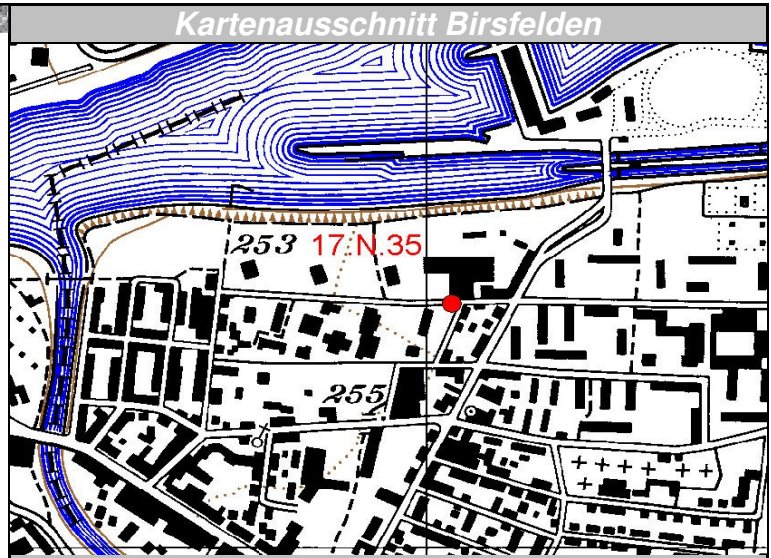
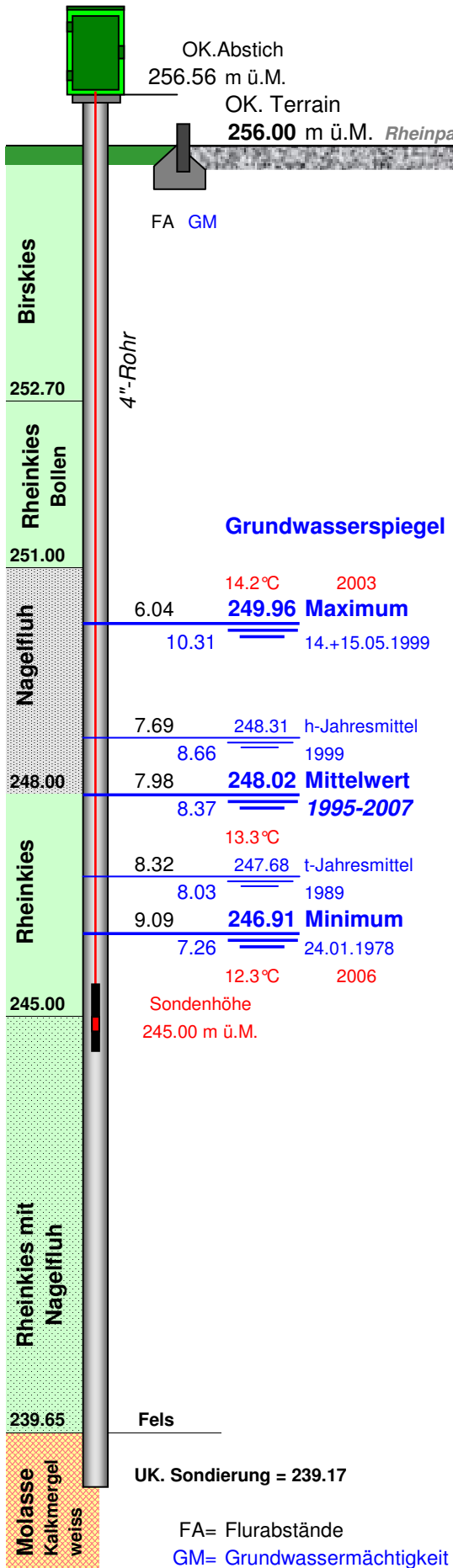
Station 17.N.35 Birsfelden

Rheinparkstrasse

BL 272

Koordinaten: 614'032.52 / 267'370.98

Messwerte: Grundwasserspiegel
Temperatur



FA= Flurabstände
GM= Grundwassermächtigkeit in m