

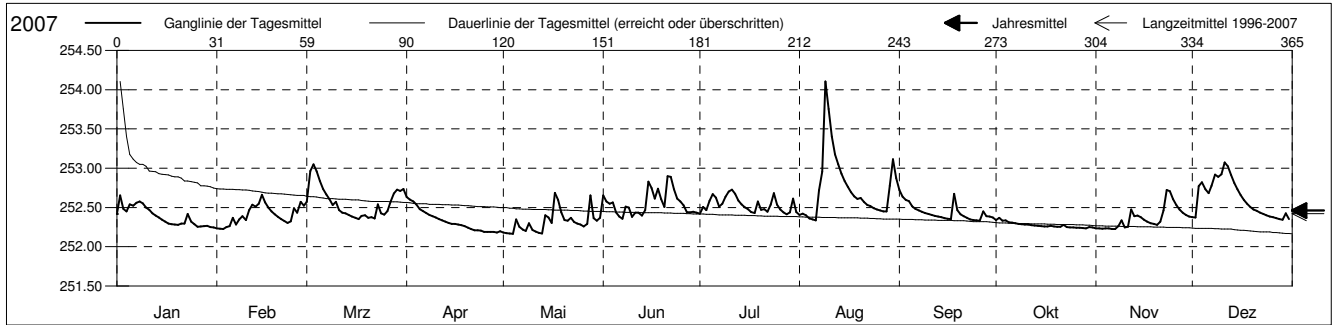
Grundwasserstände



Birstal
 Birsfelden 17.J.01 Hagnau
 Abstichpunkt: 255.96 m ü.M.
 OK Terrain: 255.09 m ü.M.

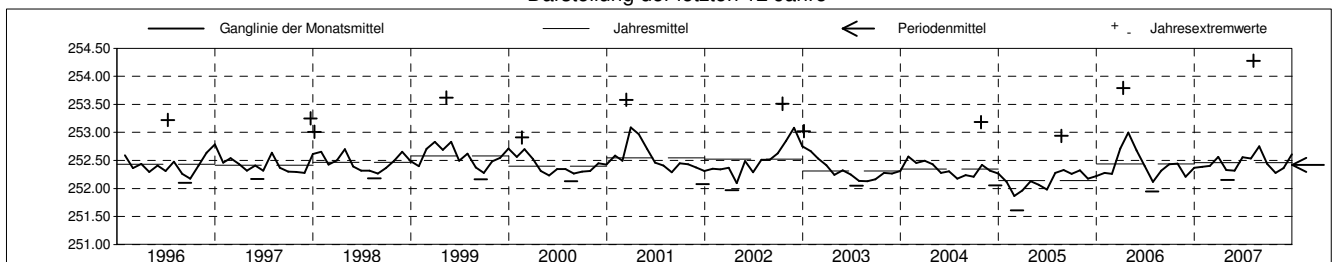
Amt für Umweltschutz und Energie
 Kanton Basel-Landschaft
 Koordinaten: 613914.75 / 266003.84

2007	Januar	Februar	März	April	Mai	Juni	Juli	August	September	Oktober	November	Dezember	
1	252.42	252.23 -	252.57	252.63 +	252.18	252.66	252.42 -	252.41	252.73 +	252.34	252.23 -	252.38	1
2	252.65 +	252.23 -	252.97	252.60	252.17 -	252.58	252.51	252.42	252.64	252.37 +	252.23 -	252.37	2
3	252.48	252.23 -	253.05 +	252.58	252.17 -	252.55	252.47	252.40	252.60	252.33	252.23 -	252.77	3
4	252.45	252.25	252.96	252.54	252.17 -	252.56	252.59	252.36	252.58	252.34	252.23 -	252.82	4
5	252.54	252.26	252.84	252.48	252.35	252.44	252.67	252.35	252.52	252.31	252.23 -	252.73	5
Tagesmittel													
6	252.52	252.37	252.74	252.45	252.25	252.38	252.63	252.34 -	252.48	252.31	252.23 -	252.68	6
7	252.56	252.28	252.67	252.43	252.22	252.36 -	252.51	252.72	252.46	252.30	252.23 -	252.78	7
8	252.58	252.35	252.60	252.41	252.20	252.51	252.55	252.95	252.45	252.29	252.26	252.92	8
9	252.55	252.39	252.53	252.39	252.30	252.50	252.64	254.10 +	252.43	252.29	252.34	252.89	9
10	252.50	252.34	252.57	252.37	252.21	252.38	252.70	253.75	252.42	252.28	252.24	252.92	10
11	252.47	252.47	252.47	252.35	252.19	252.43	252.73 +	253.41	252.40	252.28	252.25	253.07 +	11
12	252.42	252.54	252.44	252.34	252.18	252.43	252.67	253.18	252.39	252.28	252.47	253.02	12
13	252.40	252.51	252.42	252.32	252.17 -	252.40	252.59	253.05	252.39	252.27	252.39	252.91	13
14	252.37	252.55	252.41	252.31	252.40	252.47	252.54	252.93	252.38	252.27	252.40	252.82	14
Max. +	252.34	252.66 +	252.39	252.29	252.37	252.83	252.50	252.84	252.36	252.26	252.38	252.73	15
16	252.32	252.56	252.37	252.29	252.30	252.75	252.48	252.76	252.35	252.26	252.35	252.66	16
17	252.30	252.50	252.35 -	252.28	252.69 +	252.62	252.44	252.69	252.35	252.26	252.32	252.60	17
18	252.29	252.45	252.39	252.27	252.60	252.74	252.43	252.64	252.67	252.27	252.30	252.55	18
19	252.28	252.41	252.40	252.26	252.44	252.61	252.58	252.61	252.47	252.26	252.29	252.51	19
Min. -	252.28	252.38	252.37	252.24	252.34	252.51	252.47	252.62	252.41	252.26	252.28	252.47	20
21	252.29	252.35	252.38	252.23	252.33	252.90 +	252.48	252.57	252.39	252.25	252.32	252.46	21
22	252.30	252.33	252.36	252.21	252.37	252.89	252.45	252.53	252.37	252.28	252.46	252.43	22
23	252.42	252.30	252.54	252.21	252.32	252.73	252.54	252.52	252.35	252.25	252.72 +	252.42	23
24	252.32	252.32	252.42	252.21	252.30	252.61	252.68	252.49	252.34	252.25	252.71	252.40	24
25	252.29	252.49	252.41	252.19	252.28	252.58	252.54	252.48	252.34	252.24 -	252.61	252.39	25
26	252.25	252.43	252.45	252.19	252.26	252.53	252.48	252.46	252.33 -	252.24 -	252.53	252.38	26
27	252.26	252.57	252.58	252.19	252.29	252.44	252.44	252.45	252.45	252.24 -	252.47	252.36	27
28	252.26	252.53	252.68	252.19	252.65	252.44	252.42 -	252.45	252.39	252.24 -	252.43	252.35 -	28
29	252.27		252.73	252.18 -	252.37	252.45	252.44	252.78	252.39	252.24 -	252.41	252.35 -	29
30	252.25		252.71	252.20	252.33	252.43	252.61	253.11	252.37	252.25	252.39	252.42	30
31	252.24 -		252.74		252.37		252.44	252.87		252.25		252.35 -	31
Monatsmittel	252.38	252.40	252.56	252.33	252.31	252.56	252.54	252.75 +	252.44	252.28 -	252.36	252.61	
Maximum	252.90	252.94	253.12	252.66	253.05	253.08	253.05	254.28 +	253.03	252.46 -	252.81	253.11	
Datum	02.01	25.02	03.03	01.04	31.05	01.06	23.07	09.08	18.09	02.10	23.11	11.12	
Amplitude	0.72	0.72	0.79	0.48	0.90	0.74	0.66	1.95	0.70	0.23	0.59	0.78	
Jahr 2007	Mittel	252.46 m ü.M.		Maximum	254.28 (09.Aug)		Minimum	252.15 (04.Mai)		Amplitude	2.13 m		



Periode	1996 - 2007												
Monatsmittel	252.47	252.42	252.53 +	252.46	252.43	252.34	252.38	252.34	252.33 -	252.42	252.45	252.49	
Maximum	253.04 -	253.50	253.58	253.79	253.62	253.08	253.22	254.28 +	253.38	253.51	253.40	253.25	
Jahr	2004	1999	2001	2006	1999	2007	1996	2007	2002	2002	2002	1997	
Minimum	251.73	251.66	251.61 -	251.85	251.96	251.79	251.95	252.07	252.10	252.13 +	252.12	252.06	
Jahr	2005	2005	2005	2005	2005	2005	2006	2003	1996	2003	2005	2004	
Amplitude	1.00	1.13	1.20	1.16	1.11	0.74	0.97	1.95 +	1.10	1.02	0.73 -	0.97	
Jahr	2005	1999	2001	2006	1999	2007	1996	2007	2002	2004	2002	1997	
Periode	Mittel	252.42 m ü.M.		Maximum	254.28 (09.Aug 2007)		Minimum	251.61 (10.Mrz 2005)		Amplitude	2.67 m		

Darstellung der letzten 12 Jahre



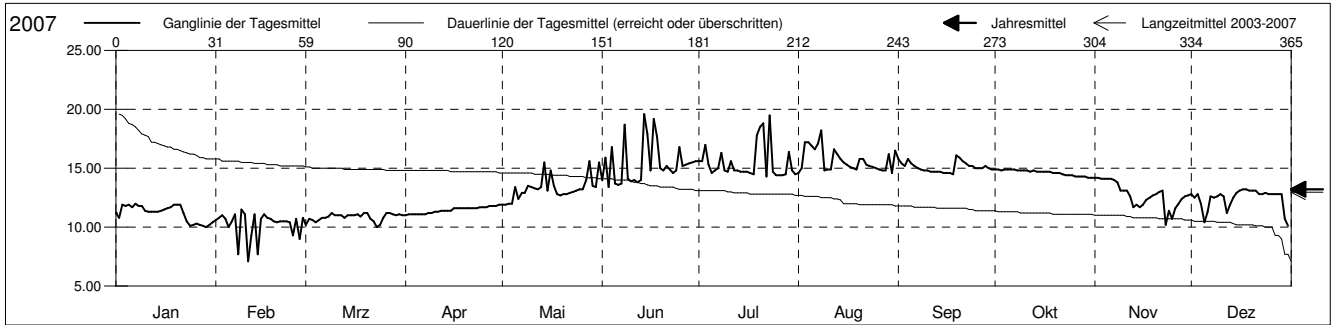
Grundwassertemperatur



Birstal
 Birsfelden 17.J.01 Hagnau
 Abstichpunkt: 255.96 m ü.M.
 OK Terrain: 255.09 m ü.M.

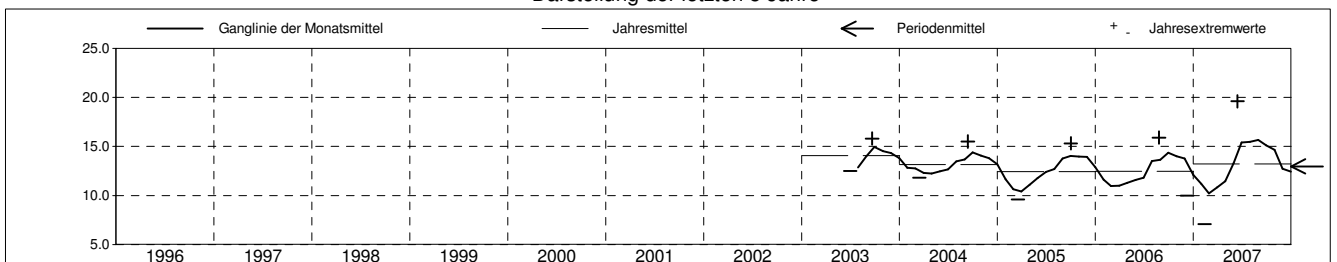
Amt für Umweltschutz und Energie
Kanton Basel-Landschaft
 Koordinaten: 613914.75 / 266003.84

2007	Januar	Februar	März	April	Mai	Juni	Juli	August	September	Oktober	November	Dezember	
1	11.2	10.6	10.2	11.0 -	11.9 -	14.0	15.6	14.6 -	15.8	14.9 +	14.2 +	12.8	1
2	10.8	10.8	10.7	11.1	11.9 -	15.9	15.6	15.0	15.4	14.9 +	14.2 +	12.5	2
3	11.9	11.0	10.6	11.1	12.0	13.4 -	17.0	17.2	15.2	14.8	14.1	12.8	3
4	11.8	10.7	10.4	11.1	12.0	16.8	15.3	17.2	15.8	14.9 +	14.1	12.0	4
5	11.9	10.0	10.6	11.1	13.4	13.7	14.6	16.9	15.4	14.9 +	14.1	10.4	5
Tagesmittel	6	11.7	10.5	10.8	11.1	12.4	13.6	16.6	15.2	14.9 +	14.1	11.3	6
7	12.0 +	11.1	10.8	11.1	12.9	13.7	15.0	17.1	15.0	14.9 +	14.0	12.6	7
8	11.8	7.7	10.9	11.2	12.9	18.7	16.3	18.2 +	14.9	14.8	13.8	12.5	8
9	11.8	11.5 +	11.2 +	11.2	13.5	14.1	14.8	14.8	14.8	14.8	13.1	12.6	9
10	11.4	11.1	11.0	11.3	13.4	13.9	14.7	14.9	14.8	14.8	13.1	12.8	10
11	11.3	7.1 -	11.0	11.3	13.3	14.0	15.6	14.9	14.7	14.8	13.1	12.6	11
12	11.3	9.3	11.0	11.4	13.2	13.8	14.8	16.6	14.7	14.7	12.6	11.2	12
13	11.3	11.1	10.8	11.4	13.4	14.0	14.8	16.2	14.7	14.8	11.7	11.9	13
14	11.3	7.7	11.0	11.4	15.5	19.6 +	14.7	15.8	14.7	14.7	11.9	12.5	14
Max. +	15	11.4	10.7	11.0	11.4	13.1	17.9	14.7	15.5	14.6	14.7	12.9	15
16	11.5	11.1	11.0	11.6	14.8	14.8	14.7	15.3	14.6	14.7	11.9	13.1	16
17	11.6	10.8	11.1	11.6	13.5	19.2	14.6	15.1	14.6	14.7	12.3	13.2 +	17
18	11.7	10.7	10.9	11.6	12.8	17.7	14.5	15.0	14.5 -	14.7	12.5	13.2 +	18
19	11.9	10.5	11.2 +	11.6	12.7	15.0	17.8	14.9	16.1 +	14.6	12.7	13.1	19
Min. -	20	11.9	10.4	11.2 +	11.6	12.8	14.8	18.5	15.8	15.9	14.6	12.8	20
21	11.9	10.5	10.7	11.6	12.8	15.2	18.8	15.8	15.6	14.6	13.0	13.1	21
22	11.2	10.5	10.5	11.6	12.9	14.9	14.3 -	15.3	15.4	14.5	13.1	12.8	22
23	10.5	10.5	10.0 -	11.6	13.0	14.6	19.5 +	15.2	15.2	14.4	10.2 -	12.8	23
24	10.1	10.4	10.2	11.7	13.1	14.8	14.7	15.1	15.2	14.4	11.4	12.9	24
25	10.2	9.3	10.8	11.7	13.2	16.8	14.4	15.0	15.0	14.4	10.7	12.8	25
26	10.3	10.7	11.2 +	11.7	13.2	15.2	14.4	14.9	15.0	14.3	11.6	12.8	26
27	10.2	9.0	11.2 +	11.8	14.0	15.3	14.4	14.8	15.0	14.3	12.0	12.8	27
28	10.1	10.8	11.1	11.8	15.6 +	15.4	14.5	14.8	15.2	14.3	12.4	12.8	28
29	10.0 -		11.0	11.8	13.5	15.5	16.4	16.2	15.0	14.3	12.6	12.8	29
30	10.2		11.1	11.9 +	13.4	15.6	14.8	14.6 -	14.9	14.2 -	12.7	10.7	30
31	10.4		11.0		15.5		14.5	16.5		14.2 -		10.1 -	31
Monatsmittel	11.2	10.2 -	10.8	11.4	13.3	15.4	15.5	15.7 +	15.1	14.6	12.7	12.4	
Maximum	12.0	11.5	11.2 -	11.9	15.6	19.6 +	19.5	18.2	16.1	14.9	14.2	13.2	
Datum	07.01	09.02	09.03	30.04	28.05	14.06	23.07	08.08	19.09	01.10	01.11	17.12	
Minimum	10.0	7.1 -	10.0	11.0	11.9	13.4	14.3	14.6 +	14.5	14.2	10.2	10.1	
Datum	29.01	11.02	23.03	01.04	01.05	03.06	22.07	01.08	18.09	30.10	23.11	31.12	
Amplitude	2.0	4.4	1.2	0.9	3.7	6.2	5.2	3.6	1.6	0.7	4.0	3.1	
Jahr 2007	Mittel	13.2 °C		Maximum	19.6 (14.Jun)		Minimum	7.1 (11.Feb)		Amplitude	12.5 °C		



Periode	2003 - 2007												
Monatsmittel	11.8	11.1 -	11.1 -	11.5	12.3	13.1	13.6	14.1	14.6 +	14.2	13.7	12.9	
Maximum	13.5	13.0	12.8	12.5 -	15.6	19.6 +	19.5	18.2	16.1	15.3	14.5	14.1	
Jahr	2004	2004	2004	2004	2007	2007	2007	2007	2007	2003	2003	2003	
Minimum	10.0	7.1 -	9.6	10.6	11.3	11.7	12.2	12.9	13.5 +	13.4	10.2	10.0	
Jahr	2007	2007	2005	2005	2005	2006	2006	2005	2005	2005	2007	2006	
Amplitude	2.1	4.4	1.4	0.9 -	3.7	6.2 +	5.2	3.6	2.0	1.8	4.0	3.2	
Jahr	2005	2007	2005	2007	2007	2007	2007	2007	2006	2004	2007	2006	
Periode	Mittel	13.0 °C		Maximum	19.6 (14.Jun 2007)		Minimum	7.1 (11.Feb 2007)		Amplitude	12.5 °C		

Darstellung der letzten 5 Jahre



Grundwasserspiegel im Birstal

Station 17.J.1

Birsfelden

Hagnau

OK. Deckel = 256.91

OK. Damm = 257.00 m ü.M.

Koordinaten: 613'914.72 / 266'003.83

Messwerte: Grundwasserspiegel
Temperatur
Leitfähigkeit ab August 2008

