

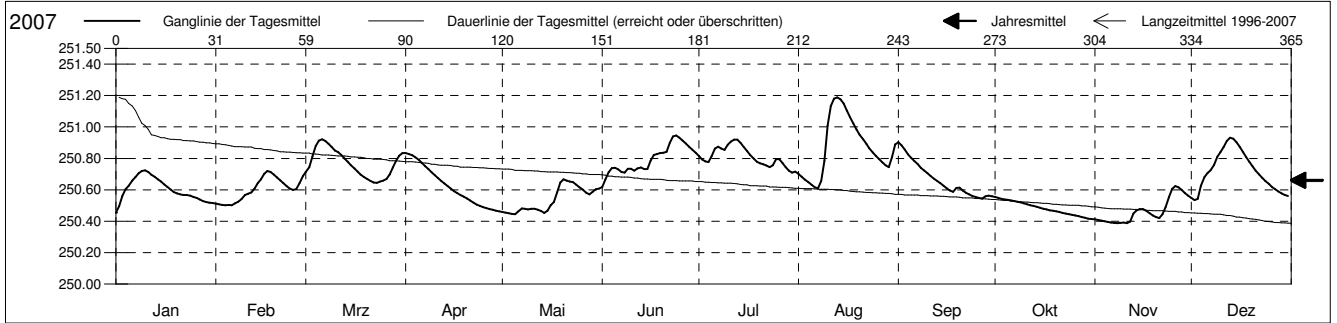
**Grundwasserstände**



**Birstal**  
 Birsfelden 17.C.8 Hardstrasse  
 Abstichpunkt: 261.03 m ü.M.  
 OK Terrain: 260.92 m ü.M.

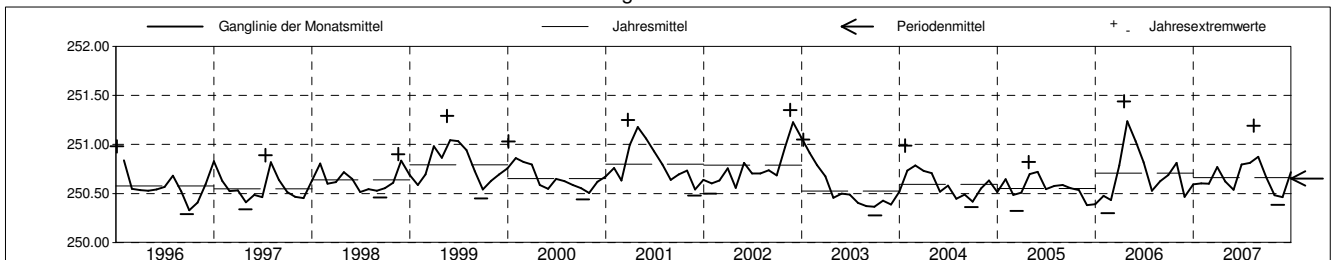
**Amt für Umweltschutz und Energie**  
**Kanton Basel-Landschaft**  
 Koordinaten: 614253.56 / 266747.78

2007	Januar	Februar	März	April	Mai	Juni	Juli	August	September	Oktober	November	Dezember	
1	250.46 -	250.51	250.71	250.83 +	250.46	250.62 -	250.82	250.70	250.90 +	250.55 +	250.41	250.55	1
2	250.50	250.51	250.74	250.83 +	250.45	250.67	250.79	250.68	250.88	250.55 +	250.41	250.53 -	2
3	250.56	250.50 -	250.81	250.82	250.45	250.71	250.78	250.66	250.86	250.54	250.40	250.54	3
4	250.60	250.50 -	250.88	250.81	250.45	250.74	250.78	250.65	250.83	250.54	250.40	250.63	4
5	250.63	250.50 -	250.91	250.79	250.44 -	250.74	250.82	250.63	250.80	250.54	250.40	250.68	5
Tagesmittel													
6	250.66	250.50 -	250.92 +	250.77	250.46	250.73	250.86	250.62	250.78	250.53	250.39 -	250.71	6
7	250.68	250.51	250.91	250.75	250.48	250.71	250.88	250.61 -	250.76	250.53	250.39 -	250.72	7
8	250.71	250.52	250.89	250.73	250.48	250.71	250.86	250.66	250.74	250.52	250.39 -	250.76	8
9	250.72 +	250.54	250.87	250.71	250.47	250.73	250.85	250.78	250.72	250.52	250.39 -	250.81	9
10	250.72 +	250.57	250.85	250.69	250.48	250.73	250.89	251.01	250.71	250.51	250.39 -	250.84	10
11	250.71	250.58	250.84	250.67	250.48	250.72	250.91	251.13	250.69	250.51	250.39 -	250.87	11
12	250.70	250.58	250.82	250.66	250.47	250.74	250.92 +	251.18	250.67	250.50	250.40	250.91	12
13	250.68	250.61	250.80	250.64	250.46	250.74	250.92 +	251.19 +	250.66	250.50	250.45	250.93 +	13
14	250.67	250.64	250.78	250.62	250.45	250.73	250.90	251.18	250.64	250.49	250.47	250.93 +	14
Max. +	250.65	250.67	250.76	250.61	250.47	250.73	250.87	251.15	250.62	250.49	250.48	250.90	15
16	250.63	250.70	250.74	250.59	250.50	250.78	250.85	251.11	250.61	250.48	250.48	250.87	16
17	250.62	250.72 +	250.71	250.58	250.52	250.82	250.82	251.06	250.59	250.48	250.47	250.87	17
18	250.60	250.71	250.70	250.57	250.58	250.83	250.80	251.02	250.59	250.47	250.45	250.81	18
19	250.59	250.70	250.68	250.56	250.65	250.83	250.78	250.98	250.61	250.47	250.44	250.78	19
20	250.58	250.68	250.67	250.54	250.67 +	250.84	250.77	250.95	250.61	250.46	250.43	250.75	20
Min. -													
21	250.57	250.66	250.66	250.53	250.66	250.84	250.76	250.92	250.60	250.46	250.42	250.72	21
22	250.57	250.64	250.65	250.52	250.65	250.90	250.75	250.89	250.58	250.45	250.44	250.70	22
23	250.57	250.62	250.64 -	250.51	250.65	250.94	250.74	250.86	250.57	250.45	250.49	250.68	23
24	250.56	250.61	250.65	250.50	250.63	250.95 +	250.76	250.84	250.56	250.44	250.55	250.66	24
25	250.56	250.60	250.66	250.49	250.62	250.93	250.80	250.82	250.55 -	250.44	250.61	250.64	25
26	250.55	250.60	250.67	250.48	250.60	250.91	250.80	250.79	250.55 -	250.44	250.62 +	250.62	26
27	250.54	250.64	250.70	250.48	250.58	250.89	250.77	250.77	250.55 -	250.43	250.62 +	250.60	27
28	250.53	250.69	250.74	250.47	250.57	250.88	250.74	250.76	250.56	250.43	250.60	250.59	28
29	250.52		250.79	250.47	250.59	250.86	250.72	250.74	250.56	250.42	250.58	250.58	29
30	250.52		250.82	250.46 -	250.60	250.84	250.71 -	250.81	250.56	250.42	250.56	250.57	30
31	250.52		250.83		250.61		250.72	250.89		250.41 -		250.56	31
Monatsmittel	250.60	250.60	250.77	250.62	250.54	250.79	250.81	250.87 +	250.66	250.48	250.46 -	250.72	
Maximum	250.73	250.72	250.92	250.84	250.67	250.95	250.92	251.19 +	250.91	250.56 -	250.63	250.93	
Datum	10.01	17.02	06.03	01.04	20.05	24.06	12.07	13.08	01.09	01.10	26.11	13.12	
Amplitude	0.27	0.22	0.28	0.38	0.23	0.35	0.22	0.59	0.36	0.14	0.24	0.41	
Jahr 2007	Mittel	250.66 m ü.M.		Maximum	251.19 (13.Aug)			Minimum	250.38 (11.Nov)			Amplitude	0.81 m



Periode	1996 - 2007												
Monatsmittel	250.70	250.63	250.72 +	250.71	250.70	250.67	250.66	250.61	250.55 -	250.59	250.61	250.67	
Maximum	251.05	251.02	251.25	251.44 +	251.29	251.12	251.10	251.19	250.98 -	251.12	251.35	251.23	
Jahr	2003	1999	2001	2006	1999	1999	1999	2007	2002	2002	2002	2002	
Minimum	250.38	250.30	250.32	250.34	250.40 +	250.38	250.37	250.34	250.28 -	250.28 -	250.33	250.32	
Jahr	2006	2006	2005	1997	2003	2003	2003	2003	2003	2003	2005	2005	
Amplitude	0.56	0.45	0.72 +	0.38	0.50	0.35 -	0.35 -	0.59	0.43	0.54	0.44	0.41	
Jahr	2004	1999	2001	2007	1999	2006	2002	2007	2002	2006	2004	2007	
Periode	Mittel	250.65 m ü.M.		Maximum	251.44 (17.Apr 2006)			Minimum	250.28 (01.Okt 2003)			Amplitude	1.16 m

Darstellung der letzten 12 Jahre



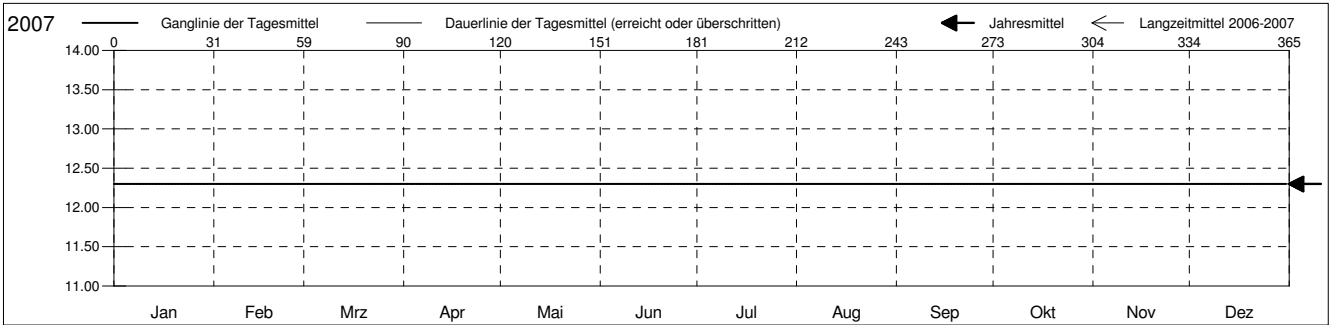
**Grundwassertemperatur**



**Birstal**  
 Birsfelden 17.C.8 Hardstrasse  
 Abstichpunkt: 261.03 m ü.M.  
 OK Terrain: 260.92 m ü.M.

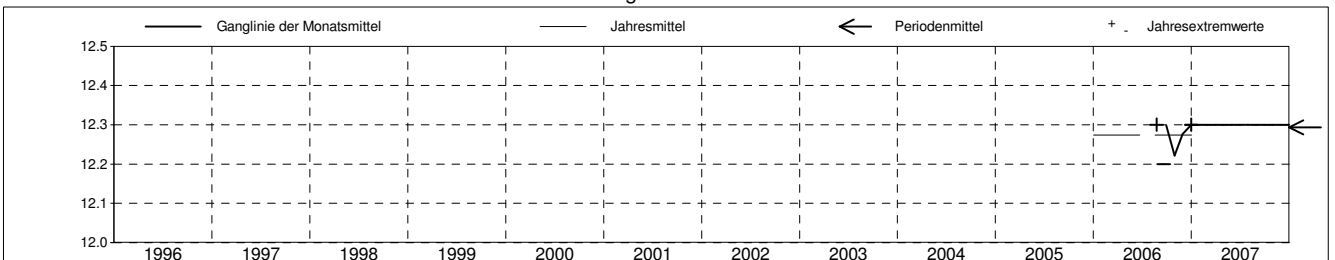
**Amt für Umweltschutz und Energie**  
**Kanton Basel-Landschaft**  
 Koordinaten: 614253.56 / 266747.78

2007	Januar	Februar	März	April	Mai	Juni	Juli	August	September	Oktober	November	Dezember	
1	12.3 +	12.3 +	12.3 +	12.3 +	12.3 +	12.3 +	12.3 +	12.3 +	12.3 +	12.3 +	12.3 +	12.3 +	1
2	12.3 +	12.3 +	12.3 +	12.3 +	12.3 +	12.3 +	12.3 +	12.3 +	12.3 +	12.3 +	12.3 +	12.3 +	2
3	12.3 +	12.3 +	12.3 +	12.3 +	12.3 +	12.3 +	12.3 +	12.3 +	12.3 +	12.3 +	12.3 +	12.3 +	3
4	12.3 +	12.3 +	12.3 +	12.3 +	12.3 +	12.3 +	12.3 +	12.3 +	12.3 +	12.3 +	12.3 +	12.3 +	4
5	12.3 +	12.3 +	12.3 +	12.3 +	12.3 +	12.3 +	12.3 +	12.3 +	12.3 +	12.3 +	12.3 +	12.3 +	5
Tagesmittel													
6	12.3 +	12.3 +	12.3 +	12.3 +	12.3 +	12.3 +	12.3 +	12.3 +	12.3 +	12.3 +	12.3 +	12.3 +	6
7	12.3 +	12.3 +	12.3 +	12.3 +	12.3 +	12.3 +	12.3 +	12.3 +	12.3 +	12.3 +	12.3 +	12.3 +	7
8	12.3 +	12.3 +	12.3 +	12.3 +	12.3 +	12.3 +	12.3 +	12.3 +	12.3 +	12.3 +	12.3 +	12.3 +	8
9	12.3 +	12.3 +	12.3 +	12.3 +	12.3 +	12.3 +	12.3 +	12.3 +	12.3 +	12.3 +	12.3 +	12.3 +	9
10	12.3 +	12.3 +	12.3 +	12.3 +	12.3 +	12.3 +	12.3 +	12.3 +	12.3 +	12.3 +	12.3 +	12.3 +	10
11	12.3 +	12.3 +	12.3 +	12.3 +	12.3 +	12.3 +	12.3 +	12.3 +	12.3 +	12.3 +	12.3 +	12.3 +	11
12	12.3 +	12.3 +	12.3 +	12.3 +	12.3 +	12.3 +	12.3 +	12.3 +	12.3 +	12.3 +	12.3 +	12.3 +	12
13	12.3 +	12.3 +	12.3 +	12.3 +	12.3 +	12.3 +	12.3 +	12.3 +	12.3 +	12.3 +	12.3 +	12.3 +	13
14	12.3 +	12.3 +	12.3 +	12.3 +	12.3 +	12.3 +	12.3 +	12.3 +	12.3 +	12.3 +	12.3 +	12.3 +	14
15	12.3 +	12.3 +	12.3 +	12.3 +	12.3 +	12.3 +	12.3 +	12.3 +	12.3 +	12.3 +	12.3 +	12.3 +	15
Max. +													
16	12.3 +	12.3 +	12.3 +	12.3 +	12.3 +	12.3 +	12.3 +	12.3 +	12.3 +	12.3 +	12.3 +	12.3 +	16
17	12.3 +	12.3 +	12.3 +	12.3 +	12.3 +	12.3 +	12.3 +	12.3 +	12.3 +	12.3 +	12.3 +	12.3 +	17
18	12.3 +	12.3 +	12.3 +	12.3 +	12.3 +	12.3 +	12.3 +	12.3 +	12.3 +	12.3 +	12.3 +	12.3 +	18
19	12.3 +	12.3 +	12.3 +	12.3 +	12.3 +	12.3 +	12.3 +	12.3 +	12.3 +	12.3 +	12.3 +	12.3 +	19
20	12.3 +	12.3 +	12.3 +	12.3 +	12.3 +	12.3 +	12.3 +	12.3 +	12.3 +	12.3 +	12.3 +	12.3 +	20
Min. -													
21	12.3 +	12.3 +	12.3 +	12.3 +	12.3 +	12.3 +	12.3 +	12.3 +	12.3 +	12.3 +	12.3 +	12.3 +	21
22	12.3 +	12.3 +	12.3 +	12.3 +	12.3 +	12.3 +	12.3 +	12.3 +	12.3 +	12.3 +	12.3 +	12.3 +	22
23	12.3 +	12.3 +	12.3 +	12.3 +	12.3 +	12.3 +	12.3 +	12.3 +	12.3 +	12.3 +	12.3 +	12.3 +	23
24	12.3 +	12.3 +	12.3 +	12.3 +	12.3 +	12.3 +	12.3 +	12.3 +	12.3 +	12.3 +	12.3 +	12.3 +	24
25	12.3 +	12.3 +	12.3 +	12.3 +	12.3 +	12.3 +	12.3 +	12.3 +	12.3 +	12.3 +	12.3 +	12.3 +	25
26	12.3 +	12.3 +	12.3 +	12.3 +	12.3 +	12.3 +	12.3 +	12.3 +	12.3 +	12.3 +	12.3 +	12.3 +	26
27	12.3 +	12.3 +	12.3 +	12.3 +	12.3 +	12.3 +	12.3 +	12.3 +	12.3 +	12.3 +	12.3 +	12.3 +	27
28	12.3 +	12.3 +	12.3 +	12.3 +	12.3 +	12.3 +	12.3 +	12.3 +	12.3 +	12.3 +	12.3 +	12.3 +	28
29	12.3 +	12.3 +	12.3 +	12.3 +	12.3 +	12.3 +	12.3 +	12.3 +	12.3 +	12.3 +	12.3 +	12.3 +	29
30	12.3 +	12.3 +	12.3 +	12.3 +	12.3 +	12.3 +	12.3 +	12.3 +	12.3 +	12.3 +	12.3 +	12.3 +	30
31	12.3 +	12.3 +	12.3 +	12.3 +	12.3 +	12.3 +	12.3 +	12.3 +	12.3 +	12.3 +	12.3 +	12.3 +	31
Monatsmittel	12.3 +	12.3 +	12.3 +	12.3 +	12.3 +	12.3 +	12.3 +	12.3 +	12.3 +	12.3 +	12.3 +	12.3 +	
Maximum	12.3 +	12.3 +	12.3 +	12.3 +	12.3 +	12.3 +	12.3 +	12.3 +	12.3 +	12.3 +	12.3 +	12.3 +	
Datum	01.01	01.02	01.03	01.04	01.05	01.06	01.07	01.08	01.09	01.10	01.11	01.12	
Minimum	12.3 +	12.3 +	12.3 +	12.3 +	12.3 +	12.3 +	12.3 +	12.3 +	12.3 +	12.3 +	12.3 +	12.3 +	
Datum	01.01	01.02	01.03	01.04	01.05	01.06	01.07	01.08	01.09	01.10	01.11	01.12	
Amplitude	0.0 +	0.0 +	0.0 +	0.0 +	0.0 +	0.0 +	0.0 +	0.0 +	0.0 +	0.0 +	0.0 +	0.0 +	
Jahr 2007	Mittel	12.3 °C		Maximum	12.3 (01.Jan)		Minimum	12.3 (01.Jan)		Amplitude	0.0 °C		



Periode	2006 - 2007												
Monatsmittel	12.3 +	12.3 +	12.3 +	12.3 +	12.3 +	12.3 +	12.3 +	12.3 +	12.3 +	12.3 +	12.3 +	12.3 +	12.3 +
Maximum	12.3 +	12.3 +	12.3 +	12.3 +	12.3 +	12.3 +	12.3 +	12.3 +	12.3 +	12.3 +	12.3 +	12.3 +	12.3 +
Jahr	2007	2007	2007	2007	2007	2007	2007	2006	2006	2006	2006	2006	2006
Minimum	12.3 +	12.3 +	12.3 +	12.3 +	12.3 +	12.3 +	12.3 +	12.3 +	12.2 -	12.2 -	12.2 -	12.3 +	12.3 +
Jahr	2007	2007	2007	2007	2007	2007	2007	2006	2006	2006	2006	2006	2006
Amplitude	0.0 -	0.0 -	0.0 -	0.0 -	0.0 -	0.0 -	0.0 -	0.0 -	0.1 +	0.1 +	0.1 +	0.0 -	0.0 -
Jahr	2007	2007	2007	2007	2007	2007	2007	2006	2006	2006	2006	2006	2006
Periode	Mittel	12.3 °C		Maximum	12.3 (24.Aug 2006)		Minimum	12.2 (19.Sep 2006)		Amplitude	0.1 °C		

Darstellung der letzten 2 Jahre



# Grundwasserspiegel im Birstal

Station 17.C.8 Birsfelden

Hardstrasse

Koordinaten: 614'253.59 / 266'747.77

Messwerte: Grundwasserspiegel  
Temperatur

