

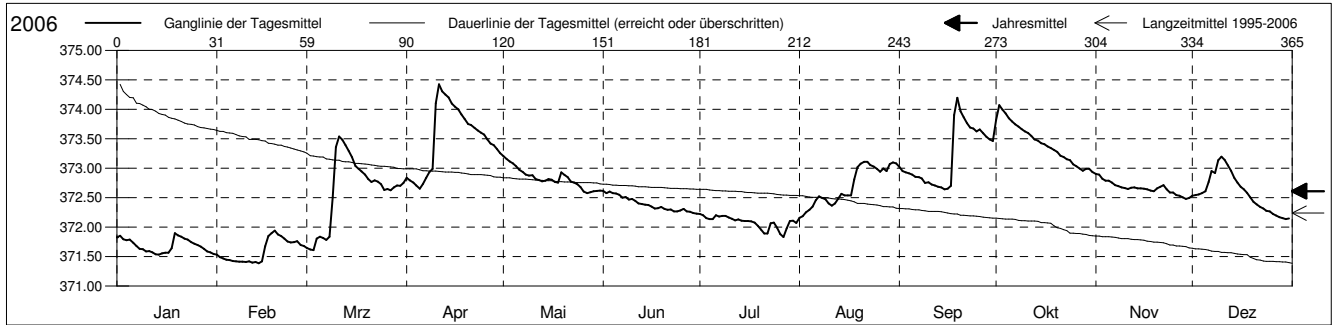
Grundwasserstände



Ergolzthal
 Thürnen 74.A.3 Leim
 Abstichpunkt: 384.90 m ü.M.
 OK Terrain: 384.13 m ü.M.

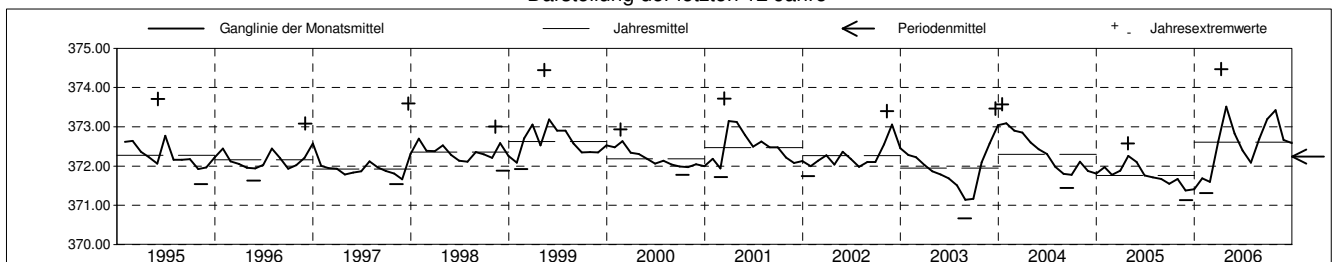
Amt für Umweltschutz und Energie
 Kanton Basel-Landschaft
 Koordinaten: 629135.00 / 256767.95

2006	Januar	Februar	März	April	Mai	Juni	Juli	August	September	Oktober	November	Dezember	
1	371.83	371.53	371.65	372.84	373.21 +	372.61 +	372.23 +	372.16 -	373.02	373.82	372.90 +	372.53	1
2	371.85	371.49	371.62	372.80	373.16	372.58	372.20	372.19	372.95	374.07 +	372.89	372.54	2
3	371.79	371.47	371.61 -	372.76	373.11	372.60	372.15	372.25	372.93	374.00	372.82	372.56	3
4	371.78	371.45	371.80	372.71	373.08	372.58	372.13	372.30	372.91	373.93	372.79	372.58	4
5	371.79	371.44	371.84	372.65 -	373.03	372.57	372.14	372.35	372.89	373.85	372.79	372.61	5
Tagesmittel													
6	371.73	371.43	371.82	372.73	372.97	372.55	372.20	372.46	372.85	373.79	372.75	372.77	6
7	371.68	371.42	371.79	372.84	372.94	372.50	372.18	372.52	372.85	373.75	372.71	372.95	7
8	371.63	371.42	371.84	372.94	372.89	372.51	372.19	372.49	372.83	373.71	372.70	372.92	8
9	371.63	371.42	372.51	372.99	372.87	372.47	372.19	372.48	372.75	373.67	372.67	373.14	9
10	371.58	371.41	373.36	374.10	372.88	372.48	372.16	372.40	372.76	373.63	372.66	373.20 +	10
11	371.59	371.42	373.54 +	374.43 +	372.81	372.45	372.14	372.36	372.73	373.60	372.65	373.14	11
12	371.57	371.40	373.48	374.30	372.80	372.40	372.12	372.40	372.71	373.55	372.67	373.05	12
13	371.54	371.41	373.39	374.25	372.78	372.39	372.13	372.48	372.68	373.49	372.67	372.96	13
14	371.53 -	371.39 -	373.29	374.20	372.79	372.38	372.11	372.57	372.67	373.47	372.66	372.84	14
Max. +	371.56	371.42	373.19	374.10	372.82	372.38	372.10	372.54	372.64 -	373.43	372.66	372.76	15
16	371.56	371.67	373.04	374.04	372.80	372.35	372.10	372.54	372.65	373.41	372.65	372.69	16
17	371.57	371.85	372.99	374.00	372.77	372.32	372.10	372.50	372.70	373.37	372.64	372.64	17
18	371.64	371.90	372.94	373.92	372.76	372.32	372.08	372.81	373.91	373.34	372.62	372.58	18
19	371.90 +	371.94 +	372.89	373.84	372.93	372.34	372.02	373.02	374.20 +	373.31	372.61	372.50	19
Min. -	371.86	371.88	372.82	373.75	372.89	372.31	371.96	373.08	373.97	373.28	372.66	372.43	20
21	371.84	371.85	372.77	373.74	372.85	372.29	371.89	373.11 +	373.87	373.21	372.69	372.38	21
22	371.81	371.80	372.80	373.68	372.77	372.30	371.89	373.11 +	373.77	373.19	372.71	372.34	22
23	371.79	371.76	372.77	373.64	372.76	372.27	372.07	373.06	373.69	373.15	372.64	372.31	23
24	371.75	371.74	372.73	373.61	372.73	372.27	372.08	373.03	373.67	373.14	372.59	372.28	24
25	371.72	371.75	372.63	373.57	372.68	372.29	371.99	372.99	373.63	373.07	372.59	372.27	25
26	371.70	371.76	372.65	373.49	372.60	372.31	371.88	372.94	373.66	373.03	372.55	372.22	26
27	371.67	371.70	372.63	373.42	372.57 -	372.27	371.83 -	372.99	373.59	373.00	372.53	372.20	27
28	371.63	371.68	372.67	373.39	372.59	372.26	371.98	372.95	373.53	372.96	372.51	372.17	28
29	371.59		372.71	373.33	372.61	372.24	372.10	373.07	373.49	372.99	372.48 -	372.15	29
30	371.57		372.70	373.26	372.61	372.23 -	372.11	373.10	373.46	372.99	372.50	372.13 -	30
31	371.55		372.75	372.62	372.62	372.23 -	372.07	373.08		372.93 -		372.15	31
Monatsmittel	371.68	371.60 -	372.62	373.51 +	372.83	372.39	372.08	372.69	373.20	373.42	372.66	372.58	
Maximum	371.94 -	371.97	373.55	374.47 +	373.24	372.64	372.24	373.14	374.46	374.09	372.93	373.21	
Datum	19.01	19.02	11.03	11.04	01.05	01.06	01.07	22.08	18.09	02.10	01.11	09.12	
Amplitude	0.49	0.66	2.02	1.93	0.73	0.45	0.46	1.07	1.89	1.22	0.52	1.14	
Jahr 2006	Mittel	372.61 m ü.M.		Maximum	374.47 (11.Apr)			Minimum	371.31 (14.Feb)		Amplitude	3.16 m	



Periode	1995 - 2006												
Monatsmittel	372.29	372.25	372.41 +	372.39	372.32	372.22	372.15	372.10	372.07 -	372.20	372.20	372.27	
Maximum	373.57	374.41	373.80	374.47 +	374.45	373.71	373.48	373.14 -	374.46	374.09	373.40	373.59	
Jahr	2004	1999	1999	2006	1999	1995	1999	2006	2006	2006	2002	1997	
Minimum	371.45	371.31	371.53	371.65 +	371.63	371.34	371.23	370.67 -	371.00	370.98	371.15	371.13	
Jahr	2006	2006	2006	1997	1996	2003	2003	2003	2003	2003	2005	2005	
Amplitude	1.57	2.49 +	2.02	1.93	2.12	1.57	0.98 -	1.23	1.89	2.13	1.21	2.02	
Jahr	1995	1999	2006	2006	1999	1995	1996	2003	2006	2003	2003	1997	
Periode	Mittel	372.24 m ü.M.		Maximum	374.47 (11.Apr 2006)			Minimum	370.67 (28.Aug 2003)		Amplitude	3.80 m	

Darstellung der letzten 12 Jahre



Grundwassertemperatur



Ergolzthal

Thürnen

Abstichpunkt:

OK Terrain:

74.A.3

384.90

384.13

Leim

m ü.M.

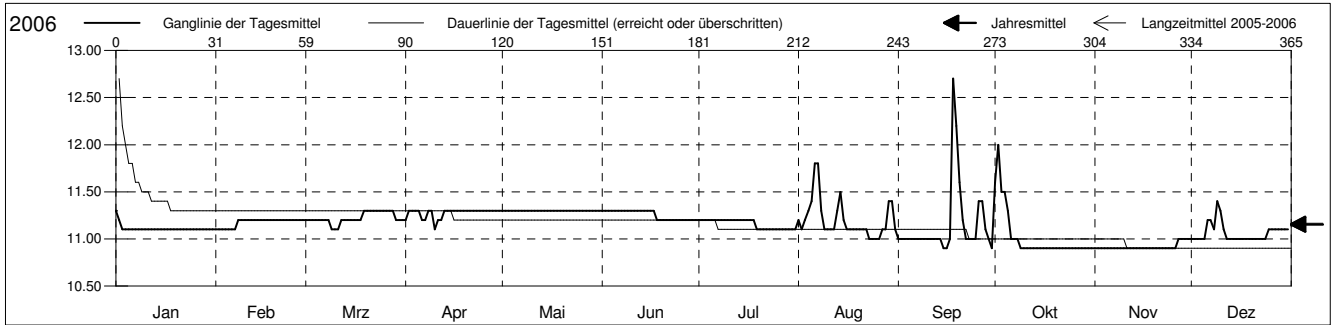
m ü.M.

Amt für Umweltschutz und Energie

Kanton Basel-Landschaft

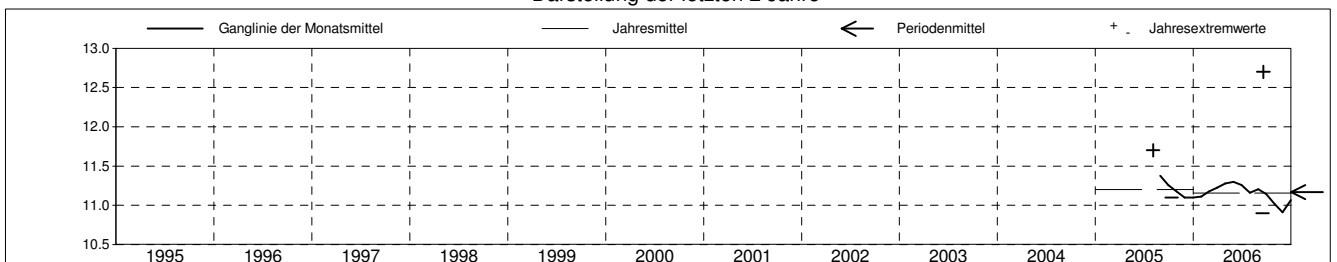
Koordinaten: 629135.00 / 256767.95

2006	Januar	Februar	März	April	Mai	Juni	Juli	August	September	Oktober	November	Dezember	
1	11.3 +	11.1 -	11.2	11.2	11.3 +	11.3 +	11.2 +	11.2	11.0	11.6	10.9 -	11.0 -	1
2	11.2	11.1 -	11.2	11.3 +	11.3 +	11.3 +	11.2 +	11.1	11.0	12.0 +	10.9 -	11.0 -	2
3	11.1 -	11.1 -	11.2	11.3 +	11.3 +	11.3 +	11.2 +	11.2	11.0	11.5	10.9 -	11.0 -	3
4	11.1 -	11.1 -	11.2	11.3 +	11.3 +	11.3 +	11.2 +	11.3	11.0	11.5	10.9 -	11.0 -	4
5	11.1 -	11.1 -	11.2	11.3 +	11.3 +	11.3 +	11.2 +	11.4	11.0	11.3	10.9 -	11.0 -	5
Tagesmittel													
6	11.1 -	11.1 -	11.2	11.2	11.3 +	11.3 +	11.2 +	11.8 +	11.0	11.0	10.9 -	11.2	6
7	11.1 -	11.1 -	11.2	11.2	11.3 +	11.3 +	11.2 +	11.8 +	11.0	11.0	10.9 -	11.2	7
8	11.1 -	11.2 +	11.2	11.3 +	11.3 +	11.3 +	11.2 +	11.3	11.0	11.0	10.9 -	11.1	8
9	11.1 -	11.2 +	11.1 -	11.3 +	11.3 +	11.3 +	11.2 +	11.1	11.0	10.9 -	10.9 -	11.4 +	9
10	11.1 -	11.2 +	11.1 -	11.1 -	11.3 +	11.3 +	11.2 +	11.1	11.0	10.9 -	10.9 -	11.3	10
11	11.1 -	11.2 +	11.1 -	11.2	11.3 +	11.3 +	11.2 +	11.1	11.0	10.9 -	10.9 -	11.1	11
12	11.1 -	11.2 +	11.2	11.2	11.3 +	11.3 +	11.2 +	11.1	11.0	10.9 -	10.9 -	11.0 -	12
13	11.1 -	11.2 +	11.2	11.3 +	11.3 +	11.3 +	11.2 +	11.3	11.0	10.9 -	10.9 -	11.0 -	13
14	11.1 -	11.2 +	11.2	11.3 +	11.3 +	11.3 +	11.2 +	11.5	11.0	10.9 -	10.9 -	11.0 -	14
15	11.1 -	11.2 +	11.2	11.3 +	11.3 +	11.3 +	11.2 +	11.2	10.9 -	10.9 -	10.9 -	11.0 -	15
Max. +													
16	11.1 -	11.2 +	11.2	11.3 +	11.3 +	11.3 +	11.2 +	11.1	10.9 -	10.9 -	10.9 -	11.0 -	16
17	11.1 -	11.2 +	11.2	11.3 +	11.3 +	11.3 +	11.2 +	11.1	11.0	10.9 -	10.9 -	11.0 -	17
18	11.1 -	11.2 +	11.2	11.3 +	11.3 +	11.2 -	11.2 +	11.1	12.7 +	10.9 -	10.9 -	11.0 -	18
19	11.1 -	11.2 +	11.3 +	11.3 +	11.3 +	11.2 -	11.1 -	11.1	12.2	10.9 -	10.9 -	11.0 -	19
20	11.1 -	11.2 +	11.3 +	11.3 +	11.3 +	11.2 -	11.1 -	11.1	11.6	10.9 -	10.9 -	11.0 -	20
Min. -													
21	11.1 -	11.2 +	11.3 +	11.3 +	11.3 +	11.2 -	11.1 -	11.1	11.2	10.9 -	10.9 -	11.0 -	21
22	11.1 -	11.2 +	11.3 +	11.3 +	11.3 +	11.2 -	11.1 -	11.1	11.0	10.9 -	10.9 -	11.0 -	22
23	11.1 -	11.2 +	11.3 +	11.3 +	11.3 +	11.2 -	11.1 -	11.0 -	11.0	10.9 -	10.9 -	11.0 -	23
24	11.1 -	11.2 +	11.3 +	11.3 +	11.3 +	11.2 -	11.1 -	11.0 -	11.0	10.9 -	10.9 -	11.0 -	24
25	11.1 -	11.2 +	11.3 +	11.3 +	11.3 +	11.2 -	11.1 -	11.0 -	11.0	10.9 -	10.9 -	11.1	25
26	11.1 -	11.2 +	11.3 +	11.3 +	11.3 +	11.2 -	11.1 -	11.0 -	11.4	10.9 -	10.9 -	11.1	26
27	11.1 -	11.2 +	11.3 +	11.3 +	11.3 +	11.2 -	11.1 -	11.1	11.4	10.9 -	11.0 +	11.1	27
28	11.1 -	11.2 +	11.3 +	11.3 +	11.3 +	11.2 -	11.1 -	11.1	11.1	10.9 -	11.0 +	11.1	28
29	11.1 -	11.2 +	11.2	11.3 +	11.3 +	11.2 -	11.1 -	11.4	11.0	10.9 -	11.0 +	11.1	29
30	11.1 -	11.2	11.2	11.3 +	11.3 +	11.2 -	11.1 -	11.4	10.9 -	10.9 -	11.0 +	11.1	30
31	11.1 -	11.2	11.2	11.3 +	11.3 +	11.2 -	11.1 -	11.1	10.9 -	10.9 -	11.0	11.1	31
Monatsmittel	11.1	11.2	11.2	11.3 +	11.3 +	11.3 +	11.2	11.2	11.1	11.0	10.9 -	11.1	
Maximum	11.3	11.2	11.3	11.3	11.3	11.3	11.2	11.8	12.7 +	12.0	11.0 -	11.4	
Datum	01.01	08.02	19.03	02.04	01.05	01.06	01.07	06.08	18.09	02.10	27.11	09.12	
Minimum	11.1	11.1	11.1	11.1	11.3 +	11.2	11.1	11.0	10.9 -	10.9 -	10.9 -	11.0	
Datum	03.01	01.02	09.03	10.04	01.05	18.06	19.07	23.08	15.09	09.10	01.11	01.12	
Amplitude	0.2	0.1	0.2	0.2	0.0 +	0.1	0.1	0.8	1.8	1.1	0.1	0.4	
Jahr 2006	Mittel	11.2 °C		Maximum	12.7 (18.Sep)		Minimum	10.9 (15.Sep)		Amplitude	1.8 °C		



Periode	2005 - 2006												
Monatsmittel	11.1	11.2	11.2	11.3 +	11.3 +	11.3 +	11.2	11.3 +	11.2	11.1	11.0 -	11.1	
Maximum	11.3	11.2	11.3	11.3	11.3	11.3	11.5	11.8	12.7 +	12.0	11.1 -	11.4	
Jahr	2006	2006	2006	2006	2006	2006	2005	2006	2006	2006	2005	2006	
Minimum	11.1	11.1	11.1	11.1	11.3 +	11.2	11.1	11.0	10.9 -	10.9 -	10.9 -	11.0	
Jahr	2006	2006	2006	2006	2006	2006	2006	2006	2006	2006	2006	2006	
Amplitude	0.2	0.1	0.2	0.2	0.0 -	0.1	0.1	0.8	1.8 +	1.1	0.1	0.4	
Jahr	2006	2006	2006	2006	2006	2006	2005	2006	2006	2006	2006	2006	
Periode	Mittel	11.2 °C		Maximum	12.7 (18.Sep 2006)		Minimum	10.9 (15.Sep 2006)		Amplitude	1.8 °C		

Darstellung der letzten 2 Jahre



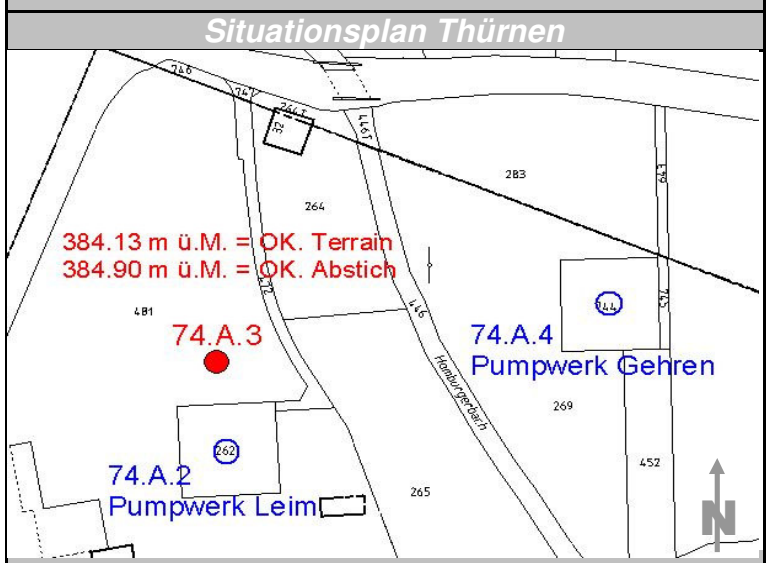
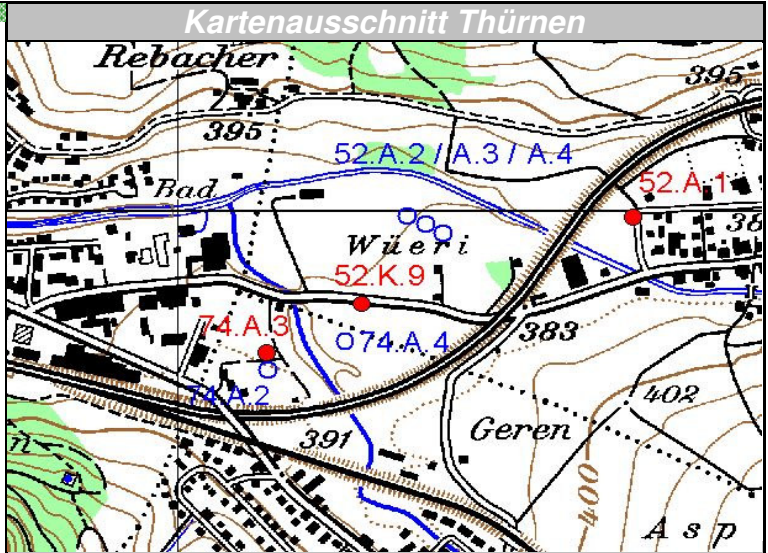
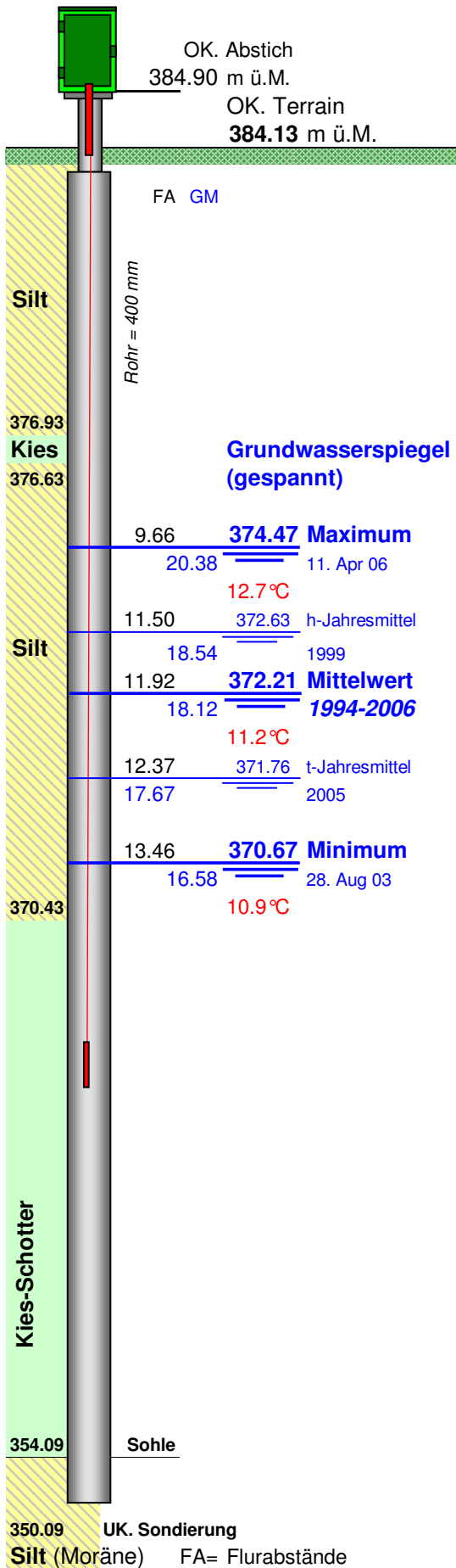
Grundwasserspiegel im Ergolztal

Station 74.A.3 Thürnen

Leim

Koordinaten: 629'134.97 / 256'767.96

Messwerte: Grundwasserspiegel
Temperatur



FA= Flurabstände
GM= Grundwassermächtigkeit in m