

**Grundwasserstände**



Ergolzthal

Böckten

Abstichpunkt:

OK Terrain:

52.K.09

382.41

381.50

Bruggmatt

m ü.M.

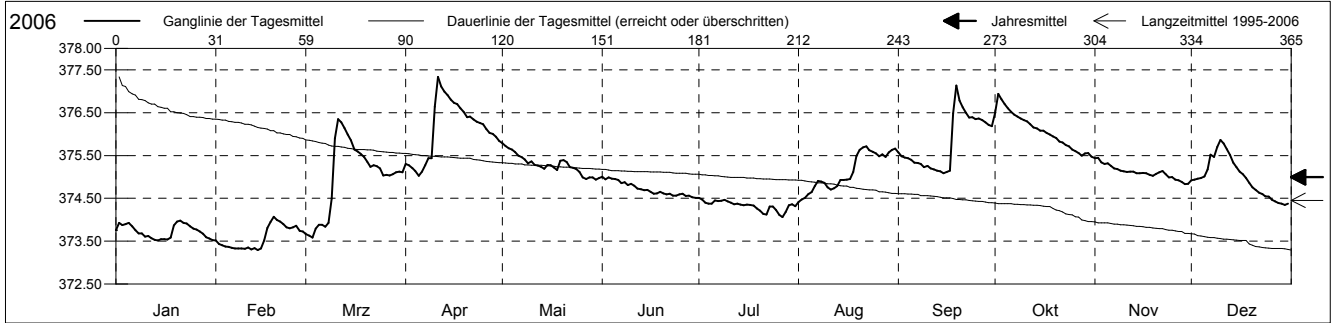
m ü.M.

**Amt für Umweltschutz und Energie**

**Kanton Basel-Landschaft**

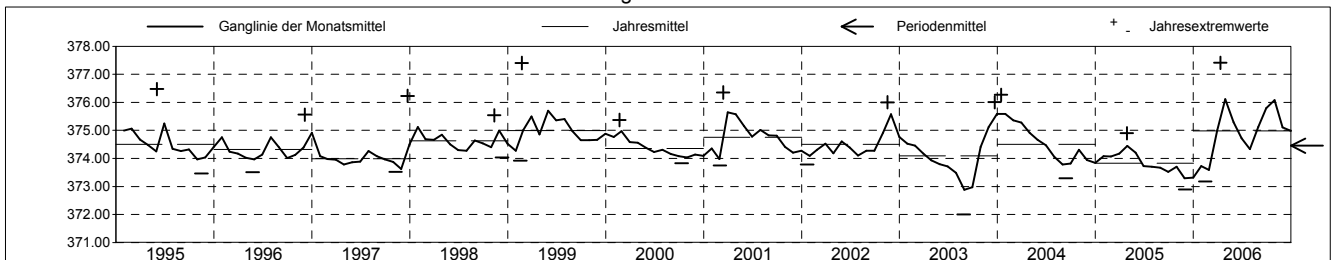
Koordinaten: 629280.00 / 256847.50

2006	Januar	Februar	März	April	Mai	Juni	Juli	August	September	Oktober	November	Dezember	
1	373.76	373.51	373.67	375.30	375.79 +	375.00 +	374.51 +	374.41 -	375.57	376.49	375.44 +	374.92	1
2	373.93	373.44	373.63	375.27	375.72	374.94	374.48	374.48	375.48	376.94 +	375.44 +	374.94	2
3	373.88	373.40	373.58 -	375.21	375.67	374.99	374.40	374.51	375.46	376.82	375.34	374.96	3
4	373.89	373.38	373.79	375.14	375.64	374.96	374.38	374.60	375.44	376.70	375.31	374.98	4
5	373.93	373.37	373.88	375.02 -	375.58	374.95	374.38	374.64	375.40	376.60	375.32	375.01	5
Tagesmittel													
6	373.84	373.34	373.88	375.12	375.50	374.93	374.45	374.79	375.33	376.52	375.26	375.18	6
7	373.76	373.33	373.84	375.27	375.46	374.85	374.44	374.91	375.33	376.46	375.20	375.52	7
8	373.68	373.33	373.93	375.44	375.41	374.88	374.45	374.89	375.31	376.41	375.18	375.47	8
9	373.68	373.33	374.49	375.44	375.32	374.81	374.47	374.86	375.23	376.37	375.15	375.70	9
10	373.61	373.32	375.90	376.64	375.36	374.84	374.43	374.76	375.26	376.32	375.13	375.86 +	10
11	373.62	373.35	376.35 +	377.33 +	375.28	374.80	374.40	374.71	375.20	376.30	375.12	375.78	11
12	373.57	373.31	376.27	377.11	375.27	374.72	374.36	374.74	375.18	376.23	375.12	375.65	12
13	373.53	373.34	376.14	376.99	375.23	374.71	374.38	374.79	375.14	376.15	375.13	375.51	13
14	373.51 -	373.29 -	375.99	376.91	375.19	374.69	374.35	374.93	375.13	376.13	375.09	375.34	14
Max. +	373.55	373.33	375.86	376.81	375.28	374.70	374.34	374.93	375.09 -	376.08	375.09	375.23	15
16	373.55	373.52	375.64	376.73	375.27	374.65	374.35	374.94	375.12	376.08	375.09	375.12	16
17	373.54	373.81	375.60	376.70	375.22	374.61	374.35	374.95	375.15	376.02	375.08	375.06	17
18	373.58	373.95	375.54	376.60	375.16	374.61	374.33	375.12	376.49	375.99	375.05	374.97	18
19	373.87	374.07 +	375.46	376.52	375.37	374.65	374.27	375.49	377.13 +	375.95	375.03	374.86	19
Min. -	373.96	373.99	375.36	376.39	375.39	374.61	374.21	375.63	376.78	375.91	375.07	374.76	20
21	373.98 +	373.96	375.24	376.41	375.35	374.60	374.14	375.70	376.63	375.82	375.11	374.69	21
22	373.93	373.90	375.27	376.35	375.23	374.61	374.12	375.71 +	376.50	375.81	375.14	374.63	22
23	373.91	373.82	375.25	376.29	375.22	374.56	374.31	375.62	376.39	375.75	375.06	374.60	23
24	373.85	373.80	375.20	376.26	375.19	374.57	374.31	375.59	376.39	375.71	374.99	374.55	24
25	373.80	373.82	375.04	376.23	375.12	374.59	374.23	375.55	376.35	375.64	375.00	374.54	25
26	373.77	373.86	375.05	376.12	374.99	374.61	374.12	375.48	376.36	375.60	374.94	374.47	26
27	373.73	373.74	375.03	376.03	374.95	374.56	374.06 -	375.53	376.33	375.56	374.92	374.43	27
28	373.67	373.73	375.06	376.00	374.99	374.56	374.18	375.47	376.27	375.50	374.88	374.39	28
29	373.59		375.11	375.94	374.99	374.53	374.34	375.57	376.22	375.55	374.83 -	374.37	29
30	373.57		375.12	375.84	374.94 -	374.51 -	374.36	375.63	376.18	375.56	374.84	374.35 -	30
31	373.53		375.11		374.98		374.32	375.66		375.48 -		374.37	31
Monatsmittel	373.73	373.58 -	375.01	376.11 +	375.29	374.72	374.33	375.12	375.79	376.08	375.11	374.97	
Maximum	374.05 -	374.14	376.37	377.41 +	375.83	375.05	374.54	375.75	377.39	376.97	375.49	375.87	
Datum	20.01	19.02	11.03	11.04	01.05	01.06	01.07	22.08	18.09	02.10	01.11	10.12	
Amplitude	0.65	0.96	2.90	2.54	1.05	0.61	0.60	1.50	2.43	1.60	0.79	1.64	
Jahr 2006	Mittel	374.99 m ü.M.		Maximum	377.41 (11.Apr)		Minimum	373.18 (14.Feb)		Amplitude	4.23 m		



Periode	1995 - 2006												
Monatsmittel	374.53	374.47	374.70 +	374.64	374.53	374.41	374.34	374.25	374.23 -	374.41	374.42	374.51	
Maximum	376.27	377.40	376.45	377.41 +	377.36	376.47	376.24	375.75 -	377.39	376.97	376.00	376.23	
Jahr	2004	1999	1999	2006	1999	1995	1999	2006	2006	2006	2002	1997	
Minimum	373.40	373.18	373.46	373.67 +	373.51	373.20	373.02	372.01 -	372.67	372.55	372.95	372.89	
Jahr	2006	2006	2006	1997	1996	2003	2003	2003	2003	2003	2005	2005	
Amplitude	1.90	3.48 +	2.90	2.54	2.90	2.02	1.28 -	2.09	2.43	3.23	1.51	2.70	
Jahr	1995	1999	2006	2006	1999	1995	1999	2003	2006	2003	2003	1997	
Periode	Mittel	374.45 m ü.M.		Maximum	377.41 (11.Apr 2006)		Minimum	372.01 (28.Aug 2003)		Amplitude	5.40 m		

Darstellung der letzten 12 Jahre



**Grundwassertemperatur**



Ergolzthal

Böckten

Abstichpunkt:

OK Terrain:

52.K.09

382.41

381.50

Bruggmatt

m ü.M.

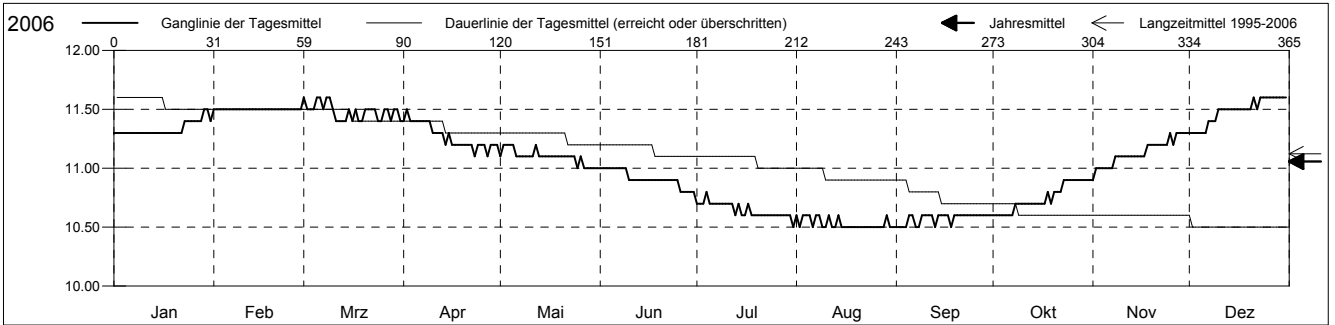
m ü.M.

**Amt für Umweltschutz und Energie**

**Kanton Basel-Landschaft**

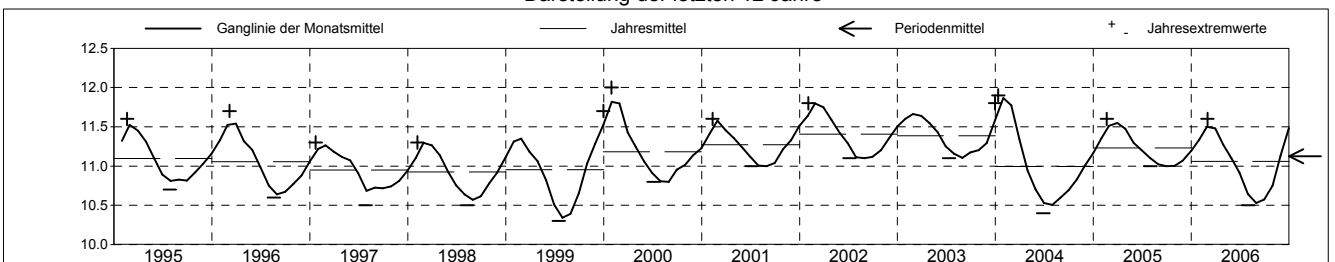
Koordinaten: 629280.00 / 256847.50

2006	Januar	Februar	März	April	Mai	Juni	Juli	August	September	Oktober	November	Dezember	
1	11.3 -	11.5 +	11.6 +	11.4	11.1	11.0 +	10.7	10.6 +	10.5 -	10.6 -	10.9 -	11.3 -	1
2	11.3 -	11.5 +	11.5	11.5 +	11.2 +	11.0 +	10.7	10.5 -	10.5 -	10.6 -	11.0	11.3 -	2
3	11.3 -	11.5 +	11.5	11.4	11.2 +	11.0 +	10.7	10.6 +	10.5 -	10.6 -	11.0	11.3 -	3
4	11.3 -	11.5 +	11.5	11.4	11.2 +	11.0 +	10.8 +	10.6 +	10.5 -	10.6 -	11.0	11.3 -	4
5	11.3 -	11.5 +	11.6 +	11.4	11.2 +	11.0 +	10.7	10.6 +	10.6 +	10.6 -	11.0	11.3 -	5
Tagesmittel													
6	11.3 -	11.5 +	11.6 +	11.4	11.1	11.0 +	10.7	10.5 -	10.6 +	10.6 -	11.0	11.3 -	6
7	11.3 -	11.5 +	11.5	11.4	11.1	11.0 +	10.7	10.6 +	10.5 -	10.6 -	11.0	11.4	7
8	11.3 -	11.5 +	11.6 +	11.4	11.1	11.0 +	10.7	10.6 +	10.5 -	10.7	11.1	11.4	8
9	11.3 -	11.5 +	11.6 +	11.4	11.1	11.0 +	10.7	10.5 -	10.6 +	10.7	11.1	11.4	9
10	11.3 -	11.5 +	11.5	11.3	11.1	10.9	10.7	10.5 -	10.6 +	10.7	11.1	11.5	10
11	11.3 -	11.5 +	11.4 -	11.3	11.1	10.9	10.7	10.6 +	10.6 +	10.7	11.1	11.5	11
12	11.3 -	11.5 +	11.4 -	11.3	11.2 +	10.9	10.7	10.5 -	10.6 +	10.7	11.1	11.5	12
13	11.3 -	11.5 +	11.4 -	11.3	11.1	10.9	10.6	10.5 -	10.5 -	10.7	11.1	11.5	13
14	11.3 -	11.5 +	11.4 -	11.2	11.1	10.9	10.7	10.6 +	10.6 +	10.7	11.1	11.5	14
15	11.3 -	11.5 +	11.5	11.3	11.1	10.9	10.6	10.5 -	10.6 +	10.7	11.1	11.5	15
Max. +													
16	11.3 -	11.5 +	11.4 -	11.2	11.1	10.9	10.6	10.5 -	10.6 +	10.7	11.1	11.5	16
17	11.3 -	11.5 +	11.5	11.2	11.1	10.9	10.7	10.5 -	10.6 +	10.7	11.1	11.5	17
18	11.3 -	11.5 +	11.4 -	11.2	11.1	10.9	10.6	10.5 -	10.5 -	10.8	11.2	11.5	18
19	11.3 -	11.5 +	11.4 -	11.2	11.1	10.9	10.6	10.5 -	10.6 +	10.7	11.2	11.5	19
20	11.3 -	11.5 +	11.5	11.2	11.1	10.9	10.6	10.5 -	10.6 +	10.8	11.2	11.5	20
Min. -													
21	11.3 -	11.5 +	11.5	11.2	11.1	10.9	10.6	10.5 -	10.6 +	10.8	11.2	11.6 +	21
22	11.3 -	11.5 +	11.5	11.2	11.1	10.9	10.6	10.5 -	10.6 +	10.8	11.2	11.5	22
23	11.4	11.5 +	11.5	11.1 -	11.1	10.9	10.6	10.5 -	10.6 +	10.9 +	11.2	11.6 +	23
24	11.4	11.5 +	11.4 -	11.2	11.1	10.9	10.6	10.5 -	10.6 +	10.9 +	11.2	11.6 +	24
25	11.4	11.5 +	11.4 -	11.2	11.0 -	10.9	10.6	10.5 -	10.6 +	10.9 +	11.3 +	11.6 +	25
26	11.4	11.5 +	11.5	11.2	11.1	10.8 -	10.6	10.5 -	10.6 +	10.9 +	11.2	11.6 +	26
27	11.4	11.5 +	11.5	11.1 -	11.0 -	10.8 -	10.6	10.5 -	10.6 +	10.9 +	11.3 +	11.6 +	27
28	11.4	11.5 +	11.4 -	11.2	11.0 -	10.8 -	10.6	10.5 -	10.6 +	10.9 +	11.3 +	11.6 +	28
29	11.5 +		11.5	11.2	11.0 -	10.8 -	10.6	10.6 +	10.6 +	10.9 +	11.3 +	11.6 +	29
30	11.5 +		11.5	11.2	11.0 -	10.8 -	10.6	10.5 -	10.6 +	10.9 +	11.3 +	11.6 +	30
31	11.4		11.4 -		11.0 -		10.5 -	10.5 -		10.9 +		11.6 +	31
Monatsmittel	11.3	11.5 +	11.5 +	11.3	11.1	10.9	10.6	10.5 -	10.6	10.7	11.1	11.5 +	
Maximum	11.5	11.5	11.6 +	11.5	11.2	11.0	10.8	10.6 -	10.6 -	10.9	11.3	11.6 +	
Datum	29.01	01.02	01.03	02.04	02.05	01.06	04.07	01.08	05.09	23.10	25.11	21.12	
Minimum	11.3	11.5 +	11.4	11.1	11.0	10.8	10.5 -	10.5 -	10.5 -	10.6	10.9	11.3	
Datum	01.01	01.02	11.03	23.04	25.05	26.06	31.07	02.08	01.09	01.10	01.11	01.12	
Amplitude	0.2	0.0 +	0.2	0.4	0.2	0.2	0.3	0.1	0.1	0.3	0.4	0.3	
Jahr 2006	Mittel	11.1 °C		Maximum	11.6 (01.Mrz)		Minimum	10.5 (31.Jul)		Amplitude	1.1 °C		



Periode	1995 - 2006												
Monatsmittel	11.4	11.5 +	11.4	11.3	11.1	10.9	10.8 -	10.8 -	10.8 -	11.0	11.1	11.3	
Maximum	12.0 +	12.0 +	11.8	11.7	11.5	11.4	11.2 -	11.2 -	11.2 -	11.3	11.4	11.8	
Jahr	2000	2000	2002	2002	2002	2002	2002	2003	2002	2001	1999	2003	
Minimum	11.0	11.2 +	11.1	10.8	10.6	10.4	10.3 -	10.3 -	10.5	10.6	10.8	10.9	
Jahr	1998	1997	1997	2004	1999	1999	1999	1999	1999	2006	1996	1997	
Amplitude	0.3	0.4	0.5 +	0.4	0.4	0.2 -	0.3	0.2 -	0.3	0.3	0.4	0.4	
Jahr	2000	2000	2004	2006	1999	1996	1997	1999	1999	1999	2006	2003	
Periode	Mittel	11.1 °C		Maximum	12.0 (29.Jan 2000)		Minimum	10.3 (17.Jul 1999)		Amplitude	1.7 °C		

Darstellung der letzten 12 Jahre



# Grundwasserspiegel im Ergolztal

Station 52.K.9 Bökten

Bruggmatt

BL 279

Koordinaten: 629'279.98 / 256'847.49

Messwerte: Grundwasserspiegel  
Temperatur

