

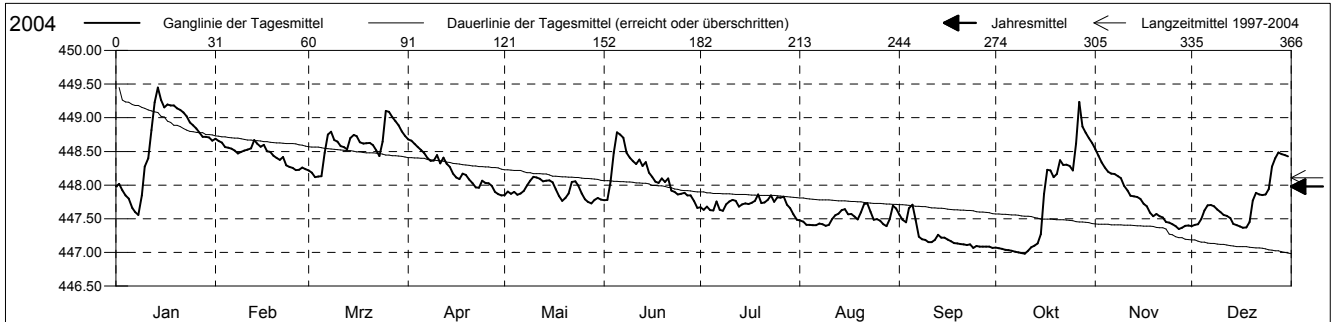
Grundwasserstände



Diegtertal
 Diegten 84.K.1 Hofmatt
 Abstichpunkt: 452.49 m ü.M.
 OK Terrain: 451.63 m ü.M.

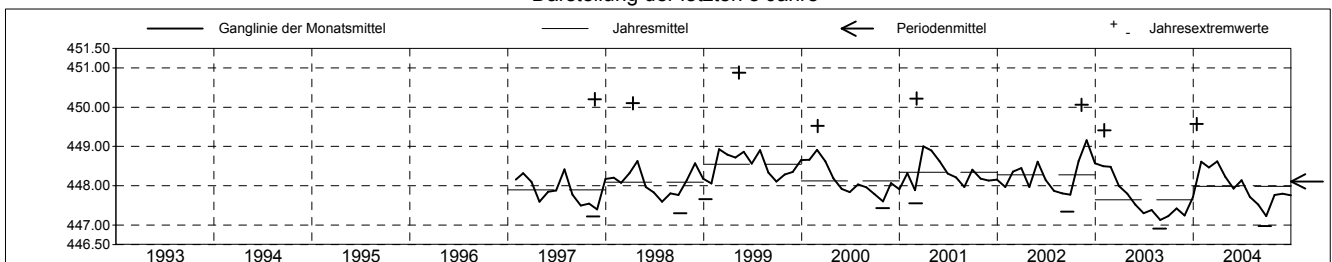
Amt für Umweltschutz und Energie
Kanton Basel-Landschaft
 Koordinaten: 628138.88 / 252415.63

2004	Januar	Februar	März	April	Mai	Juni	Juli	August	September	Oktober	November	Dezember	
1	447.98	448.69 +	448.22	448.68 +	447.85	447.77	447.67	447.48	447.56	447.07	448.54 +	447.39	1
2	448.02	448.66	448.18	448.66	447.90	447.78	447.63	447.46	447.48	447.06	448.44	447.41	2
3	447.92	448.63	448.12 -	448.61	447.87	448.05	447.68	447.41	447.44	447.05	448.33	447.42	3
4	447.85	448.57	448.13	448.56	447.90	448.48	447.63	447.41	447.65	447.04	448.26	447.49	4
5	447.80	448.55	448.13	448.52	447.86	448.78 +	447.62	447.40	447.71 +	447.03	448.20	447.62	5
Tagesmittel													
6	447.66	448.54	448.48	448.48	447.88	448.75	447.75	447.40	447.48	447.02	448.17	447.70	6
7	447.60	448.51	448.75	448.40	447.91	448.70	447.63	447.43	447.23	447.01	448.16	447.70	7
8	447.56 -	448.47	448.79	448.36	447.99	448.48	447.62	447.42	447.19	447.00	448.13	447.68	8
9	447.85	448.49	448.67	448.37	448.06	448.41	447.71	447.40	447.19	446.99	448.10	447.64	9
10	448.28	448.51	448.64	448.45	448.12 +	448.36	447.75	447.41	447.15	446.98 -	447.99	447.60	10
11	448.40	448.53	448.58	448.32	448.11	448.31	447.78	447.50	447.15	447.02	447.92	447.56	11
12	448.81	448.55	448.56	448.41	448.09	448.38	447.76	447.55	447.19	447.08	447.84	447.54	12
13	449.23	448.67	448.53	448.32	448.06	448.28	447.68	447.57	447.26	447.10	447.83	447.51	13
14	449.45 +	448.62	448.70	448.27	448.06	448.34	447.71	447.63	447.22	447.13	447.82	447.42	14
15	449.26	448.57	448.74	448.17	448.07	448.18	447.73	447.64	447.22	447.27	447.79	447.41	15
Max. +													
16	449.16	448.60	448.73	448.11	448.04	448.12	447.72	447.57	447.19	447.87	447.72	447.39	16
17	449.20	448.50	448.63	448.09	447.94	448.05	447.74	447.57	447.17	448.23	447.69	447.37 -	17
18	449.18	448.49	448.62	448.17	447.83	448.03	447.77	447.53	447.14	448.22	447.59	447.37 -	18
19	449.18	448.43	448.62	448.15	447.77	448.10	447.86 +	447.49	447.13	448.12	447.54	447.45	19
20	449.14	448.40	448.63	448.08	447.81	448.05	447.73	447.59	447.12	448.17	447.57	447.77	20
Min. -													
21	449.12	448.37	448.59	448.03	447.87	448.10	447.74	447.72	447.12	448.37	447.54	447.88	21
22	449.08	448.42	448.52	447.97	448.05	447.92	447.78	447.73 +	447.11	448.30	447.52	447.86	22
23	449.02	448.29	448.43	447.96	448.06	447.90	447.84	447.61	447.12	448.30	447.45	447.85	23
24	448.93	448.27	448.65	448.06	448.00	447.86	447.75	447.48	447.07 -	448.29	447.44	447.86	24
25	448.89	448.26	449.10 +	448.03	447.87	447.87	447.82	447.50	447.09	448.22	447.42	447.94	25
26	448.84	448.22 -	449.09	448.02	447.79	447.88	447.81	447.47	447.09	448.62	447.39	448.27	26
27	448.78	448.23	449.01	447.99	447.75	447.85	447.83	447.42	447.08	449.24 +	447.35 -	448.40	27
28	448.71	448.26	448.95	447.90	447.73 -	447.85	447.71	447.39 -	447.09	448.87	447.37	448.48 +	28
29	448.72	448.24	448.89	447.87	447.78	447.76	447.65	447.50	447.08	448.78	447.39	448.46	29
30	448.71		448.80	447.85 -	447.81	447.66 -	447.56	447.69	447.07 -	448.70	447.40	448.44	30
31	448.66		448.73		447.78		447.48 -	447.65		448.63		448.43	31
Monatsmittel	448.61	448.47	448.62 +	448.23	447.92	448.14	447.72	447.52	447.23 -	447.77	447.80	447.75	
Maximum	449.57 +	448.80	449.25	448.80	448.22	448.85	447.91	447.84	447.72 -	449.37	448.64	448.60	
Datum	14.01	01.02	25.03	01.04	11.05	05.06	23.07	30.08	05.09	27.10	01.11	28.12	
Amplitude	2.14	0.76	1.31	1.11	0.66	1.33	0.56	0.58	0.75	2.40	1.41	1.35	
Jahr 2004	Mittel	447.98 m ü.M.			Maximum	449.57 (14.Jan)		Minimum	446.97 (24.Sep)		Amplitude	2.60 m	



Periode	1997 - 2004												
Monatsmittel	448.31	448.43	448.48 +	448.25	448.16	448.00	448.02	447.79	447.72 -	447.94	448.09	448.13	
Maximum	449.96	450.49	450.22	450.10	450.88 +	449.20	449.94	448.60 -	449.67	449.95	450.20	449.91	
Jahr	2001	1999	2001	1998	1999	1999	1999	2002	2001	2002	1997	1997	
Minimum	447.43	447.57 +	447.55	447.37	447.33	447.02	447.06	446.91 -	446.96	446.98	447.05	447.06	
Jahr	2004	2001	2001	1997	2003	2003	2003	2003	2003	2004	2003	2003	
Amplitude	2.37	2.14	2.67	2.16	2.44	1.43	1.93	1.21 -	2.07	2.40	2.98 +	2.53	
Jahr	2001	1999	2001	1998	1999	1997	2001	2002	2002	2004	1997	1997	
Periode	Mittel	448.11 m ü.M.			Maximum	450.88 (13.Mai 1999)		Minimum	446.91 (29.Aug 2003)		Amplitude	3.97 m	

Darstellung der letzten 8 Jahre

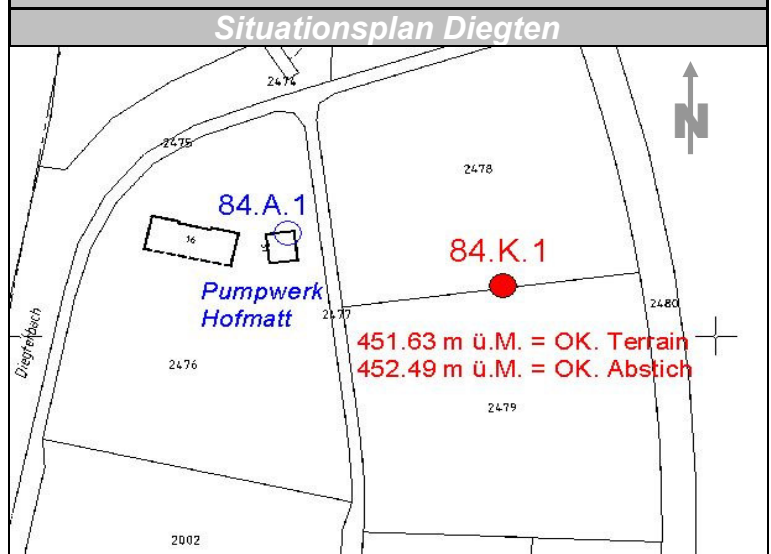
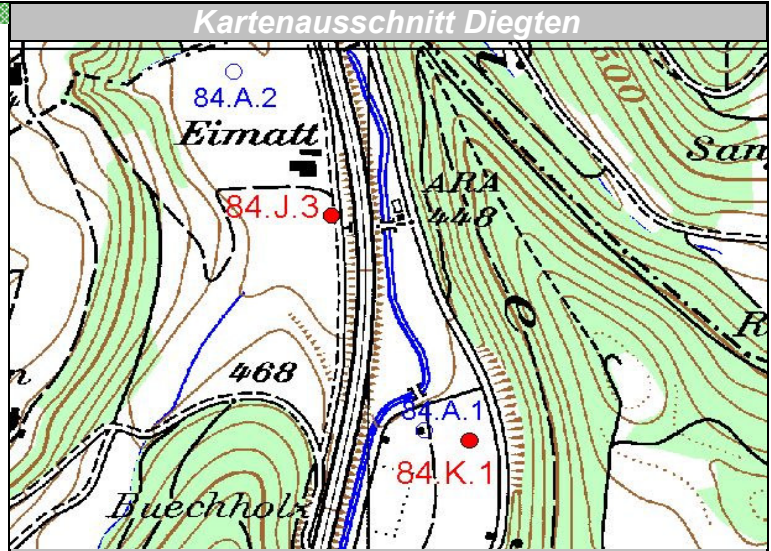
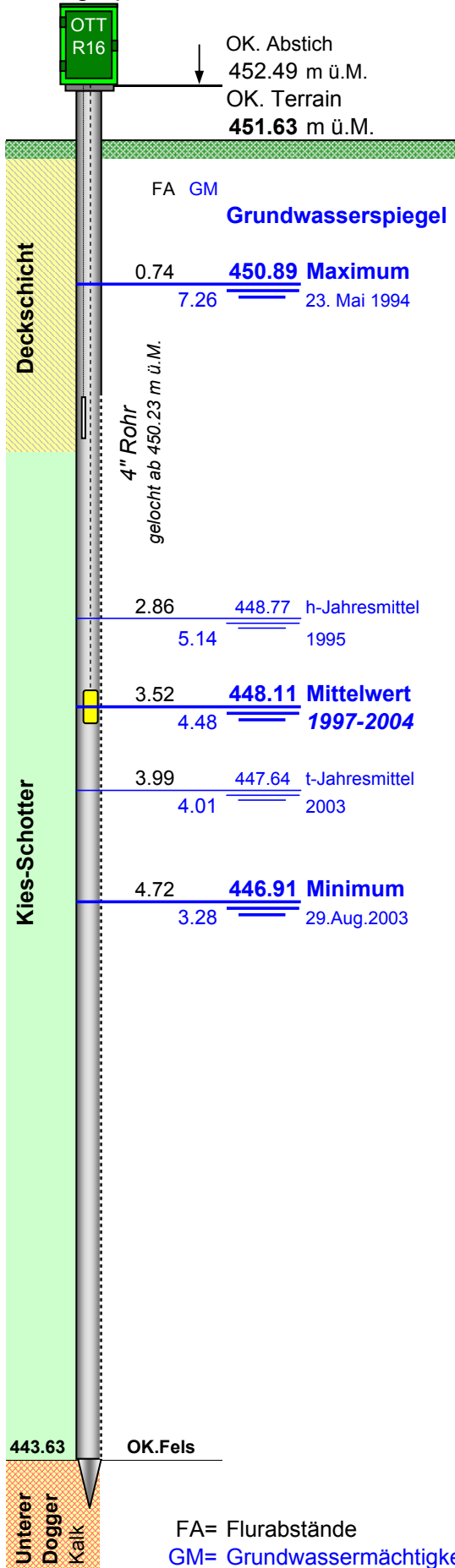


Grundwasserspiegel im Diegtertal

Station 84.K.1 Diegten
Limnigraph

Hofmatt
Koordinaten: 628'138.86 / 252'415.62

Messwerte: Grundwasserspiegel



FA= Flurabstände
GM= Grundwassermächtigkeit in m