

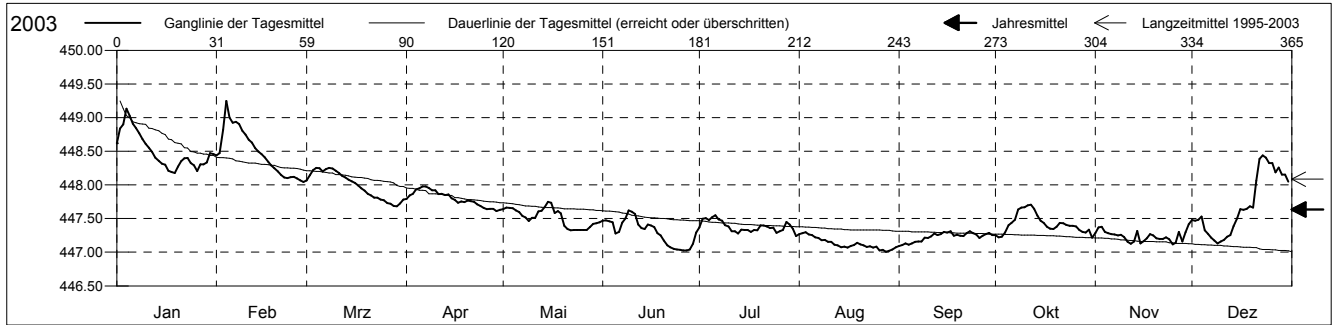
Grundwasserstände



Diegtertal
 Diegten 84.K.1 Hofmatt
 Abstichpunkt: 452.49 m ü.M.
 OK Terrain: 451.63 m ü.M.

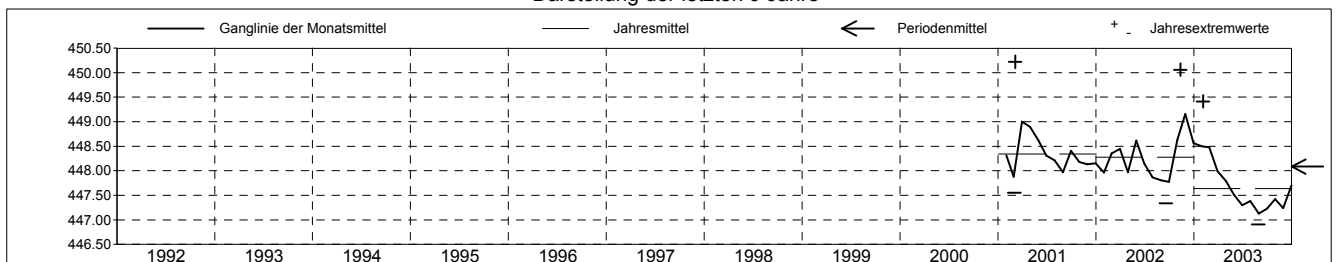
Amt für Umweltschutz und Energie
Kanton Basel-Landschaft
 Koordinaten: 628138.88 / 252415.63

2003	Januar	Februar	März	April	Mai	Juni	Juli	August	September	Oktober	November	Dezember	
1	448.62	448.44	448.07	447.79	447.64	447.47	447.37	447.27	447.09 -	447.25	447.28	447.48	1
2	448.84	448.47	448.14	447.84	447.66	447.47	447.50	447.28	447.11	447.22 -	447.37	447.47	2
3	448.90	448.82	448.22	447.87	447.66	447.46	447.50	447.30 +	447.13	447.23	447.38	447.48	3
4	449.13 +	449.25 +	448.25 +	447.93	447.65	447.44	447.48	447.26	447.11	447.29	447.30	447.53	4
5	449.03	449.00	448.25 +	447.95	447.62	447.28	447.52	447.26	447.13	447.40	447.28	447.32	5
Tagesmittel													
6	448.91	448.93	448.20	447.98 +	447.60	447.30	447.55 +	447.22	447.16	447.43	447.27	447.27	6
7	448.84	448.94	448.23	447.98 +	447.54	447.44	447.49	447.21	447.16	447.48	447.27	447.22	7
8	448.77	448.90	448.25 +	447.95	447.52	447.50	447.47	447.18	447.16	447.63	447.25	447.18	8
9	448.68	448.80	448.25 +	447.92	447.46	447.62 +	447.40	447.18	447.21	447.66	447.26	447.13 -	9
10	448.61	448.75	448.21	447.92	447.51	447.60	447.38	447.15	447.21	447.67	447.22	447.16	10
11	448.55	448.67	448.18	447.86	447.51	447.57	447.31	447.15	447.24	447.70	447.15	447.18	11
12	448.49	448.63	448.14	447.87	447.61	447.41	447.31	447.11	447.28	447.71 +	447.13	447.23	12
13	448.40	448.55	448.11	447.85	447.61	447.36	447.28	447.10	447.25	447.64	447.16	447.26	13
14	448.36	448.50	448.08	447.86	447.67	447.35	447.33	447.07	447.27	447.54	447.32	447.39	14
15	448.31	448.46	448.05	447.80	447.75 +	447.41	447.33	447.08	447.30	447.47	447.13	447.50	15
Max. +													
16	448.30	448.41	448.03	447.78	447.74	447.40	447.33	447.07	447.29	447.43	447.17	447.64	16
17	448.21	448.34	447.99	447.73	447.58	447.37	447.30	447.09	447.31 +	447.38	447.21	447.63	17
18	448.19	448.29	447.95	447.75	447.61	447.28	447.33	447.11	447.25	447.35	447.27	447.65	18
19	448.18 -	448.25	447.92	447.74	447.58	447.25	447.33	447.14	447.26	447.34	447.25	447.68	19
20	448.27	448.20	447.87	447.77	447.39	447.17	447.40	447.12	447.24	447.38	447.21	447.67	20
Min. -													
21	448.35	448.15	447.84	447.76	447.34	447.10	447.40	447.10	447.24	447.43	447.20	448.06	21
22	448.40	448.11	447.81	447.75	447.33 -	447.07	447.38	447.08	447.28	447.43	447.20	448.39	22
23	448.40	448.10	447.81	447.71	447.33 -	447.05	447.36	447.09	447.31 +	447.41	447.22	448.44 +	23
24	448.32	448.11	447.78	447.69	447.33 -	447.04	447.36	447.07	447.29	447.39	447.19	448.40	24
25	448.29	448.12	447.77	447.66	447.33 -	447.04	447.29	447.08	447.26	447.39	447.12 -	448.32	25
26	448.20	448.10	447.73	447.64	447.33 -	447.03	447.31	447.03	447.21	447.38	447.14	448.33	26
27	448.31	448.07	447.72	447.64	447.33 -	447.02 -	447.33	447.04	447.24	447.33	447.30	448.19	27
28	448.31	448.04 -	447.69	447.65	447.37	447.04	447.45	447.01 -	447.27	447.30	447.16	448.26	28
29	448.33		447.68 -	447.61 -	447.42	447.13	447.41	447.02	447.29	447.29	447.30	448.15	29
30	448.47		447.73	447.63	447.43	447.29	447.35	447.04	447.25	447.33	447.42 +	448.15	30
31	448.46		447.78	447.44	447.44	447.44	447.24 -	447.08	447.22 -	447.22 -	447.42 +	448.05	31
Monatsmittel	448.50 +	448.48	447.99	447.80	447.51	447.30	447.38	447.13 -	447.23	447.42	447.24	447.70	
Maximum	449.30	449.41 +	448.40	448.12	447.90	447.93	447.82	447.42 -	447.42 -	447.82	447.55	448.48	
Datum	04.01	04.02	04.03	06.04	16.05	09.06	06.07	03.08	16.09	11.10	30.11	22.12	
Amplitude	1.27	1.50	0.82	0.60	0.58	0.91	0.76	0.51	0.46	0.72	0.50	1.42	
Jahr 2003	Mittel	447.64 m ü.M.	Maximum	449.41 (04.Feb)	Minimum	446.91 (29.Aug)	Amplitude	2.50 m					



Periode	1995 - 2003												
Monatsmittel	448.26	448.24	448.48 +	448.22	448.25	447.92	447.82	447.63 -	447.80	448.08	448.18	448.14	
Maximum	449.96	449.41	450.22 +	449.77	449.84	449.07	449.73	448.60 -	449.67	449.95	450.06	448.99	
Jahr	2001	2003	2001	2001	2002	2001	2001	2002	2001	2002	2002	2001	
Minimum	447.59 +	447.57	447.55	447.52	447.33	447.02	447.06	446.91 -	446.96	447.10	447.05	447.06	
Jahr	2001	2001	2001	2003	2003	2003	2003	2003	2003	2003	2003	2003	
Amplitude	2.37	1.50	2.67 +	1.49	2.01	1.23	1.93	1.21 -	2.07	1.95	1.89	1.42	
Jahr	2001	2003	2001	2001	2002	2001	2001	2002	2002	2002	2002	2003	
Periode	Mittel	448.08 m ü.M.	Maximum	450.22 (05.Mrz 2001)	Minimum	446.91 (29.Aug 2003)	Amplitude	3.31 m					

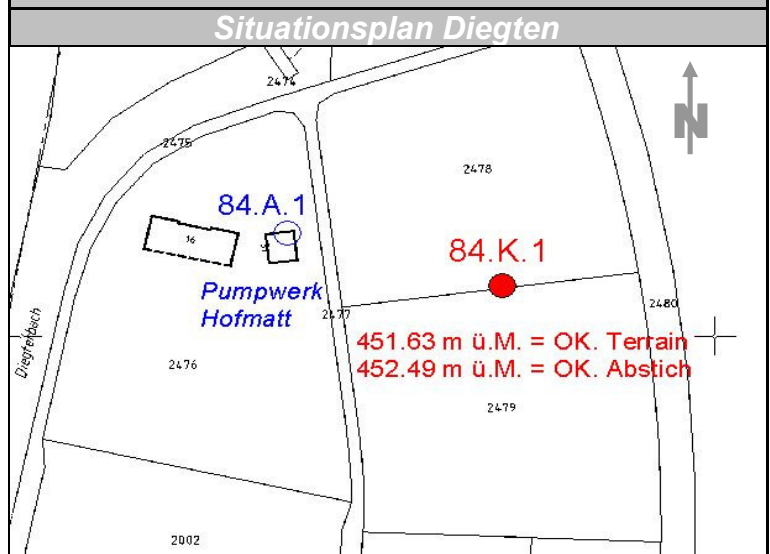
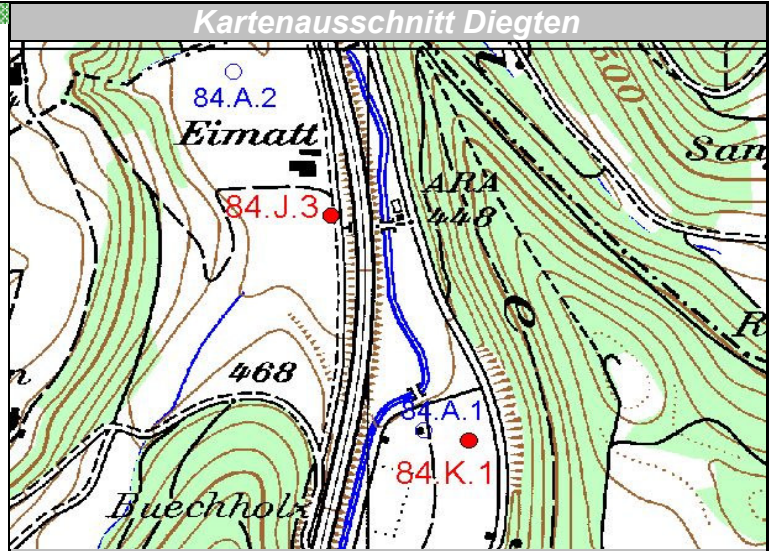
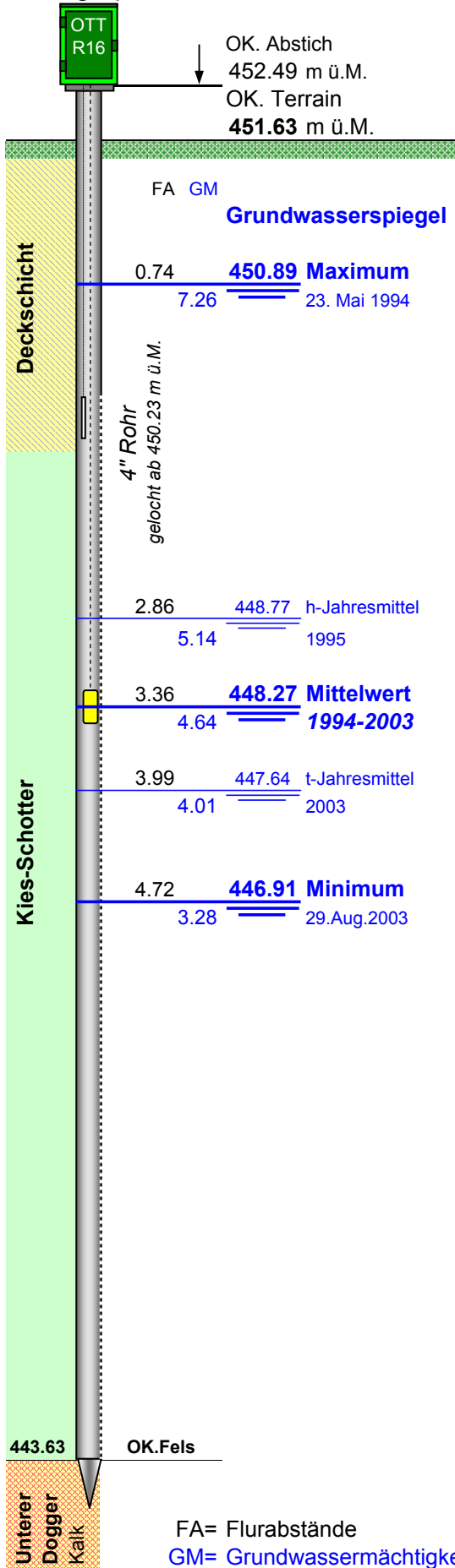
Darstellung der letzten 9 Jahre



Grundwasserspiegel im Diegtertal

Station 84.K.1 Diegten
Limnigraph

Hofmatt
Koordinaten: 628'138.86 / 252'415.62



FA= Flurabstände
GM= Grundwassermächtigkeit in m