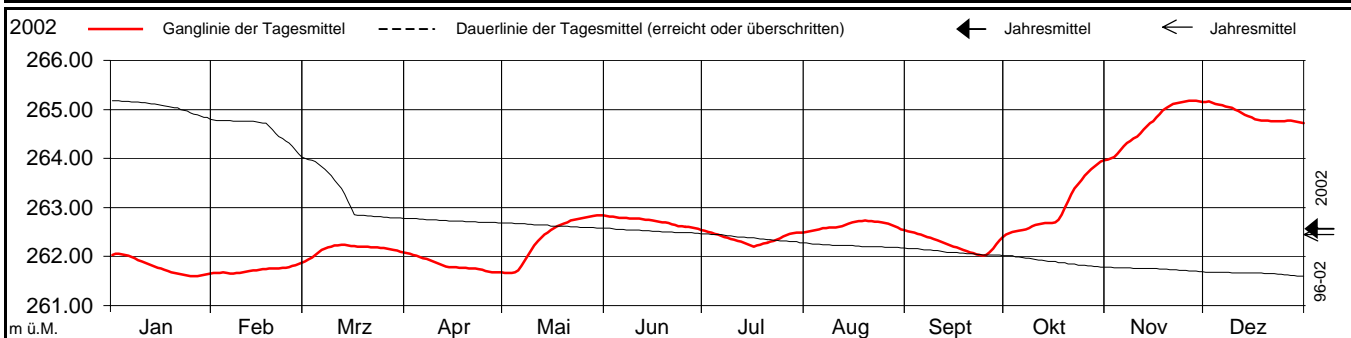
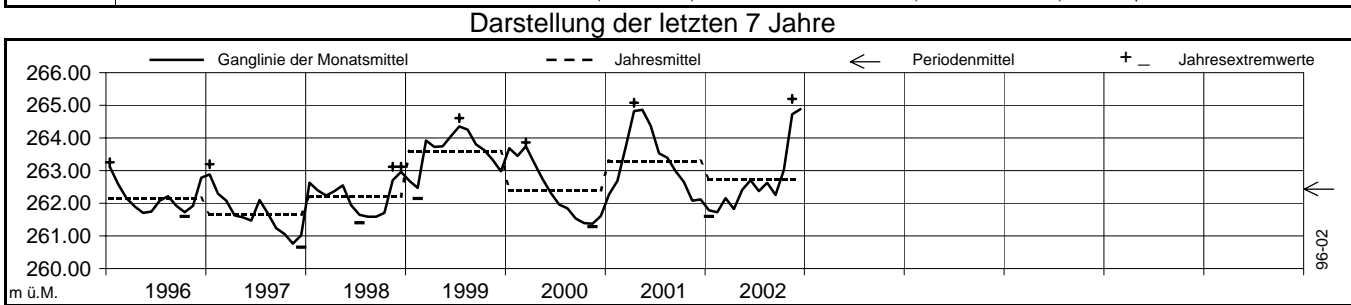


**Grundwasserstände** 41. J. 14 Pratteln Remeli / Löli Jahr 2002  
 Koordinaten: 620 545.73 / 264 047.01 OK. Terrain: 277.23 m ü.M. Abstichpunkt: 278.15 m ü.M.

2002	Januar	Februar	März	April	Mai	Juni	Juli	August	September	Oktober	November	Dezember	
1	262.04	261.66 -	261.90 -	262.07 +	261.67 -	262.83 +	262.52 +	262.50 -	262.52 +	262.45 -	263.98 -	265.15 +	1
2	262.05 +	261.67	261.93	262.06	261.67 -	262.82 +	262.50	262.51	262.51	262.48	264.00	265.16	2
3	262.06	261.67	261.98	262.04	261.67 -	262.81	262.48	262.52	262.49	262.50	264.03	265.14	3
4	262.05	261.67	262.04	262.02	261.68	262.80	262.46	262.54	262.47	262.52	264.10	265.12	4
Tagesmittel	262.03	261.67	262.09	261.99	261.72	262.79	262.44	262.56	262.45	262.52	264.18	265.10	5
6	262.01	261.66 -	262.13	261.97	261.80	262.79	262.42	262.58	262.42	262.54	264.25	265.08	6
7	261.99	261.66 -	262.16	261.95	261.91	262.78	262.40	262.58	262.40	262.55	264.31	265.07	7
8	261.96	261.66 -	262.19	261.92	262.02	262.78	262.38	262.60	262.38	262.59	264.36	265.05	8
9	261.93	261.67	262.21	261.90	262.12	262.78	262.36	262.60	262.36	262.62	264.41	265.03	9
interpol. x	261.90	261.68	262.22	261.87	262.23	262.77	262.34	262.59	262.33	262.64	264.45	265.00	10
11	261.87	261.69	262.23 +	261.85	262.32	262.77	262.32	262.60	262.31	262.66	264.52	264.97	11
12	261.84	261.70	262.24 +	261.82	262.38	262.76	262.30	262.62	262.28	262.67	264.58	264.93	12
13	261.82	261.71	262.24	261.80	262.44	262.76	262.28	262.64	262.26	262.68	264.66	264.89	13
14	261.80	261.72	262.23	261.78	262.49	262.75	262.25	262.67	262.23	262.69	264.72	264.86	14
Max. +	261.78	261.73	262.22	261.78	262.54	262.73	262.22	262.69	262.21	262.69	264.77	264.83	15
16	261.75	261.74	262.21	261.78	262.58	262.72	262.20 -	262.71	262.19	262.70	264.84	264.80	16
17	261.73	261.75	262.21	261.78	262.62	262.71	262.23	262.72	262.16	262.74	264.90	264.78	17
18	261.70	261.76	262.21	261.77	262.65	262.70	262.24	262.73 +	262.14	262.86	264.98	264.77	18
19	261.68	261.76	262.21	261.77	262.67	262.69	262.26	262.73 +	262.11	262.99	265.03	264.77	19
Min. -	261.67	261.76	262.20	261.76	262.70	262.68	262.28	262.72	262.09	263.13	265.07	264.77	20
21	261.65	261.76	262.19	261.76	262.73	262.66	262.30	262.72	262.07	263.27	265.12	264.76	21
22	261.63	261.77	262.19	261.76	262.75	262.64	262.32	262.71	262.05	263.38	265.13	264.76	22
23	261.62	261.78	262.18	261.74	262.76	262.63	262.35	262.70	262.03	263.48	265.14	264.77	23
24	261.61	261.79	262.18	261.73	262.77	262.61	262.38	262.69	262.02 -	263.56	265.15	264.76	24
25	261.61	261.81	262.18	261.71	262.79	262.61	262.41	262.68	262.03 -	263.65	265.17	264.76	25
26	261.60 -	261.83	262.17	261.69	262.80	262.60	262.43	262.67	262.08	263.71	265.17 +	264.77	26
27	261.61	261.85	262.15	261.68 -	262.82	262.59	262.46	262.64	262.17	263.79	265.18 +	264.77	27
28	261.62	261.87 +	262.14	261.68 -	262.83	262.58	262.48	262.62	262.25	263.84	265.18 +	264.76	28
29	261.63		262.12	261.68 -	262.84 +	262.56	262.49	262.59	262.33	263.89	265.17	264.74	29
30	261.64		262.10	261.67 -	262.84 +	262.54 -	262.49	262.56	262.40	263.93	265.15	264.74	30
31	261.65		262.08		262.83		262.49	262.54		263.96 +		264.72 -	31
Monatsmittel	261.79	261.73 -	262.15	261.83	262.41	262.71	262.37	262.63	262.26	263.02	264.72	264.89 +	
Maximum	262.07	261.89 -	262.25	262.08	262.85	262.83	262.53	262.74	262.53	263.97	265.19 +	265.18	
Datum	2.1.	28.2.	11.+ 12.3.	1.4.	29.+30.5.	1.+ 2.6.	1.7.	18.+19.8.	1.9.	31.10.	26.-28.11	1.12.	
Amplitude*	0.48	0.24 -	0.36	0.41	1.19	0.30	0.34	0.25	0.52	1.54 +	1.22	0.47	
Jahr 2002	Mittel	262.72	m ü.M.	Maximum	265.19	(26.-28.11.)	Minimum	261.59	(26. Jan. 2002)	Amplitude*	3.60	m	



Periode	1996 - 2002												
Monatsmittel	262.72	262.52	262.86 +	262.79	262.80	262.66	262.57	262.52	262.19	262.17 -	262.41	262.63	
Maximum	263.84	263.73 -	264.72	265.07	265.02	264.77	264.61	264.41	264.10	263.97	265.19 +	265.18	
Jahr	2000	2001	2001	2001	2001	2001	1999	1999	1999	2002	2002	2002	
Minimum	261.59	261.65	261.85 +	261.42	261.44	261.36	261.40	261.24	261.15	260.95	260.66	260.65 -	
Jahr	2002	2002	1997 +	1997	1997	1997	1998	1997	1997	1997	1997	1997	
Amplitude*	1.12	1.35	2.30	0.80	1.19	0.96	0.70	0.84	0.52 -	1.54 +	1.22	1.54 +	
Jahr	2001	1999	2001	1998	2002	2001	1996	1997	2002	2002	2002	1997	
Periode	Mittel	262.57	m ü.M.	Maximum	265.19	(26.-28.11.02)	Minimum	260.65	(12. Dezember 1997)	Amplitude*	4.54	m	

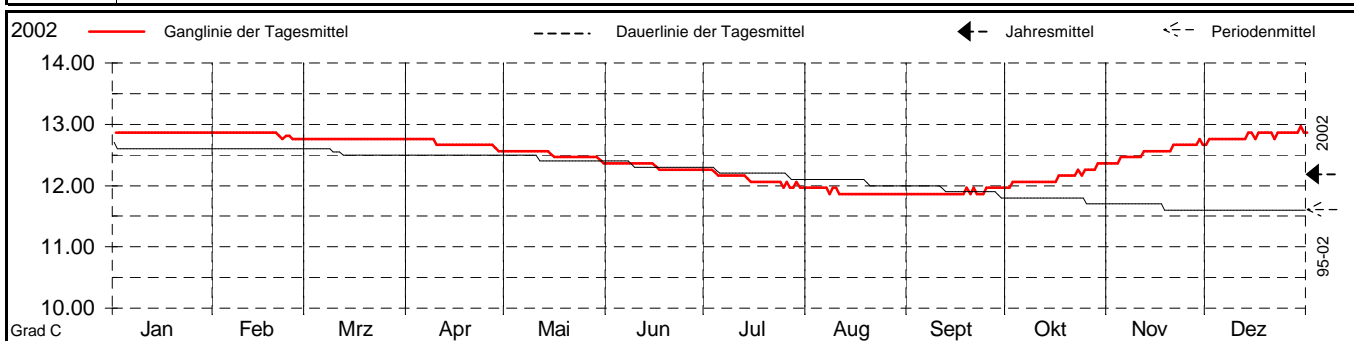


\* Die Amplituden sind aufgrund von Extremwerten berechnet

**Grundwasser-Temperaturen** 41.J.14 Pratteln Remeli / Löli Jahr 2002  
 OK. Terrain: 277.23 m ü.M. Höhe der Temperatursonde: 259.15 m ü.M.

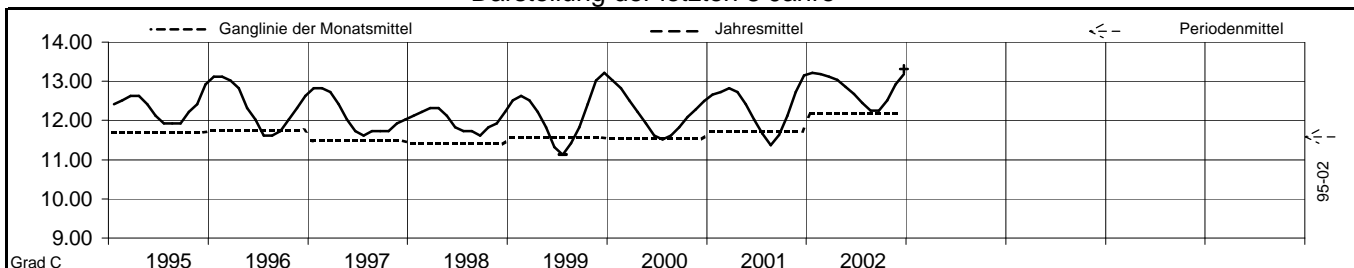
2002	Januar	Februar	März	April	Mai	Juni	Juli	August	September	Oktober	November	Dezember
1	12.60	12.60	12.50	12.50	12.30	12.10	12.00	11.70	11.60	11.70	12.10	12.50
2	12.60	12.60	12.50	12.50	12.30	12.10	12.00	11.70	11.60	11.80	12.10	12.50
3	12.60	12.60	12.50	12.50	12.30	12.10	11.95	11.70	11.60	11.80	12.10	12.50
4	12.60	12.60	12.50	12.50	12.30	12.10	11.90	11.70	11.60	11.80	12.20	12.50
Tagesmittel 5	12.60	12.60	12.50	12.50	12.30	12.10	11.90	11.70	11.60	11.80	12.20	12.50
6	12.60	12.60	12.50	12.50	12.30	12.10	11.90	11.70	11.60	11.80	12.20	12.50
7	12.60	12.60	12.50	12.50	12.30	12.10	11.90	11.60	11.60	11.80	12.20	12.50
8	12.60	12.60	12.50	12.50	12.30	12.10	11.90	11.70	11.60	11.80	12.20	12.50
9	12.60	12.60	12.50	12.40	12.30	12.10	11.90	11.70	11.60	11.80	12.20	12.50
10	12.60	12.60	12.50	12.40	12.30	12.10	11.90	11.60	11.60	11.80	12.20	12.50
11	12.60	12.60	12.50	12.40	12.30	12.10	11.90	11.60	11.60	11.80	12.30	12.50
12	12.60	12.60	12.50	12.40	12.30	12.10	11.90	11.60	11.60	11.80	12.30	12.50
13	12.60	12.60	12.50	12.40	12.30	12.10	11.85	11.60	11.60	11.80	12.30	12.60
14	12.60	12.60	12.50	12.40	12.25	12.10	11.80	11.60	11.60	11.80	12.30	12.60
in Grad C 15	12.60	12.60	12.50	12.40	12.20	12.05	11.80	11.60	11.60	11.80	12.30	12.50
16	12.60	12.60	12.50	12.40	12.20	12.00	11.80	11.60	11.60	11.90	12.30	12.60
17	12.60	12.60	12.50	12.40	12.20	12.00	11.80	11.60	11.60	11.90	12.30	12.60
18	12.60	12.60	12.50	12.40	12.20	12.00	11.80	11.60	11.70	11.90	12.30	12.60
19	12.60	12.60	12.50	12.40	12.20	12.00	11.80	11.60	11.60	11.90	12.30	12.60
20	12.60	12.55	12.50	12.40	12.20	12.00	11.80	11.60	11.70	11.90	12.40	12.60
21	12.60	12.50	12.50	12.40	12.20	12.00	11.80	11.60	11.60	11.90	12.40	12.50
22	12.60	12.55	12.50	12.40	12.20	12.00	11.80	11.60	11.60	12.00	12.40	12.60
23	12.60	12.55	12.50	12.40	12.20	12.00	11.80	11.60	11.60	11.90	12.40	12.60
24	12.60	12.50	12.50	12.40	12.20	12.00	11.70	11.60	11.70	12.00	12.40	12.60
25	12.60	12.50	12.50	12.40	12.20	12.00	11.80	11.60	11.70	12.00	12.40	12.60
26	12.60	12.50	12.50	12.40	12.20	12.00	11.70	11.60	11.70	12.00	12.40	12.60
27	12.60	12.50	12.50	12.35	12.20	12.00	11.70	11.60	11.70	12.00	12.40	12.60
28	12.60	12.50	12.50	12.30	12.20	12.00	11.80	11.60	11.70	12.10	12.50	12.60
29	12.60	12.50	12.50	12.30	12.15	12.00	11.70	11.60	11.70	12.10	12.40	12.70
30	12.60	12.50	12.50	12.30	12.10	12.00	11.70	11.60	11.70	12.10	12.40	12.60
31	12.60	12.50	12.50	12.40	12.10	12.00	11.70	11.60	11.60	12.10	12.40	12.60
Monatsmittel	12.60	12.57	12.50	12.42	12.24	12.05	11.83	11.63	11.63	11.89	12.30	12.56
Maximum	12.6	12.6	12.5	12.5	12.3	12.1	12.0	11.7	11.7	12.1	12.4	12.7
Minimum	12.6	12.5	12.5	12.3	12.1	12.0	11.7	11.6	11.6	11.7	12.1	12.5
Amplitude*	0.0	0.1	0.0	0.2	0.2	0.1	0.3	0.1	0.1	0.4	0.3	0.2

**Jahr 2002** Mittel 12.18 Grad C Maximum 12.7 (Juli +Aug.) Minimum 11.6 (Januar) Amplitude\* 1.1 °C



Periode	1995 - 2002											
Monatsmittel	12.12	12.14	12.09	11.93	11.62	11.29	11.08	11.09	11.19	11.50	11.82	12.11
Maximum	12.6	12.6	12.5	12.5	12.3	12.1	12.0	11.7	11.7	12.1	12.4	12.7
Jahr	2002	2002	2002	2002	2002	2002	2002	2002	2002	2002	99/01/02	2002
Minimum	11.5	11.6	11.7	11.6	11.2	10.7	10.5	10.7	10.8	11.1	11.3	11.4
Jahr	1998	1998	1998	99 / 00	1999	1999	1999	2001	2001	1997	97 / 98	1997
Amplitude*	1.1	1.0	0.8	0.9	1.1	1.4	1.5	1.0	0.9	1.0	1.1	1.3
Periode	Mittel	11.66	Grad C	Maximum	12.7	(August 1998)	Minimum	10.5	(Januar 2002)	Amplitude*	2.2	°C

Darstellung der letzten 8 Jahre

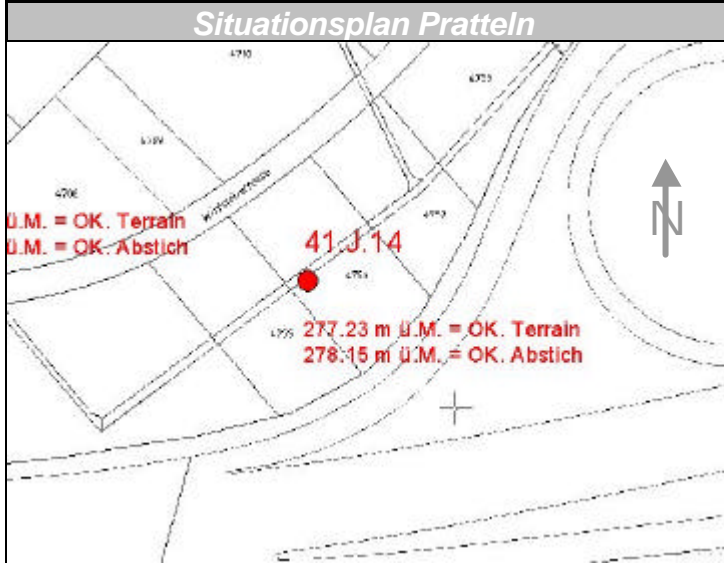
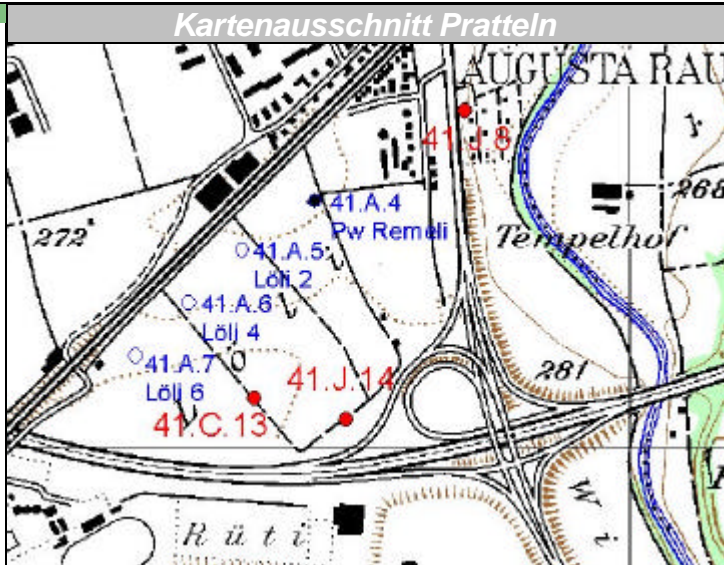
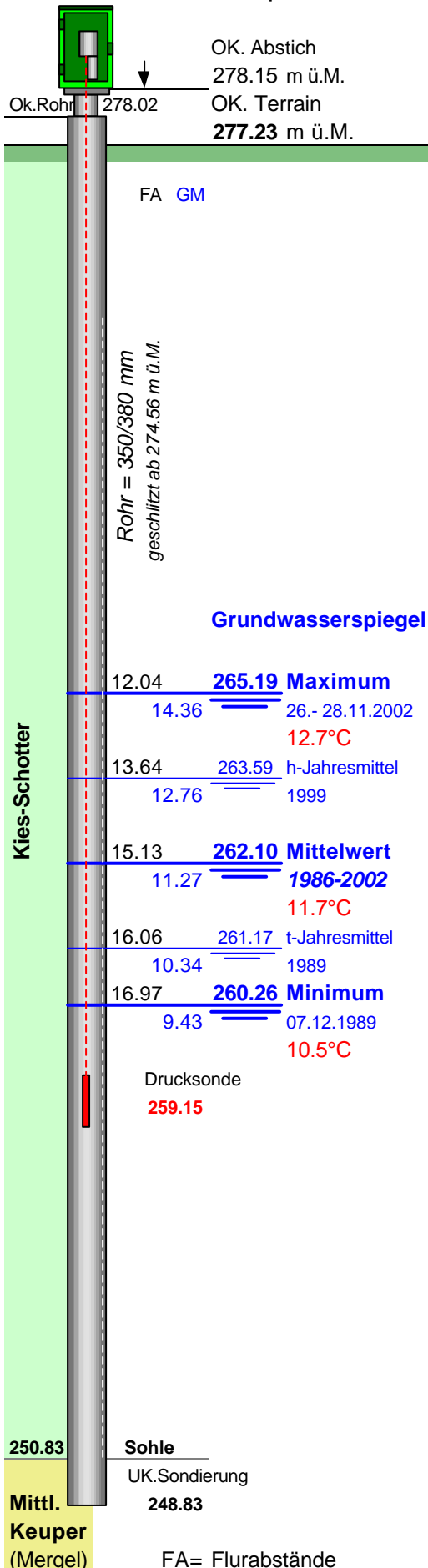


\* Die Amplituden sind aufgrund von Extremwerten berechnet

# Grundwasserspiegel im Ergolztal

Station 41.J.14 Pratteln  
Ott-Datensammler "Orpheus"

Remeli / Lölj  
Koordinaten: 620'545.73 / 264'047.01



FA= Flurabstände  
GM= Grundwassermächtigkeit in m