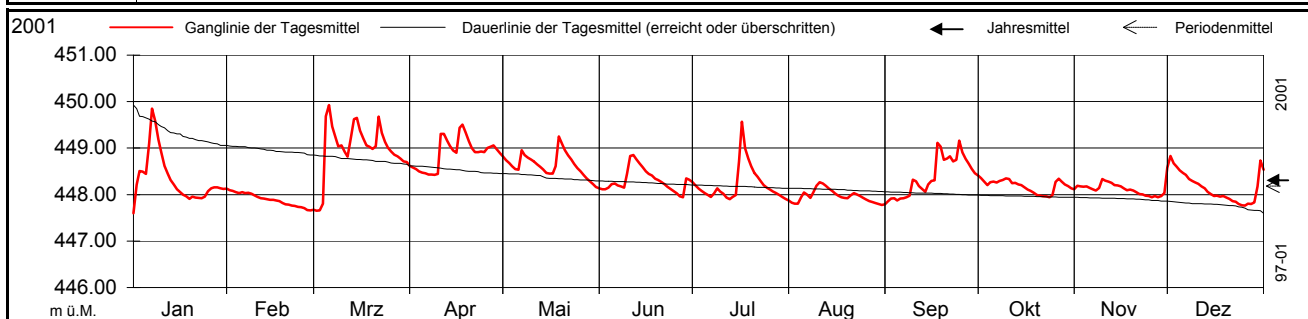


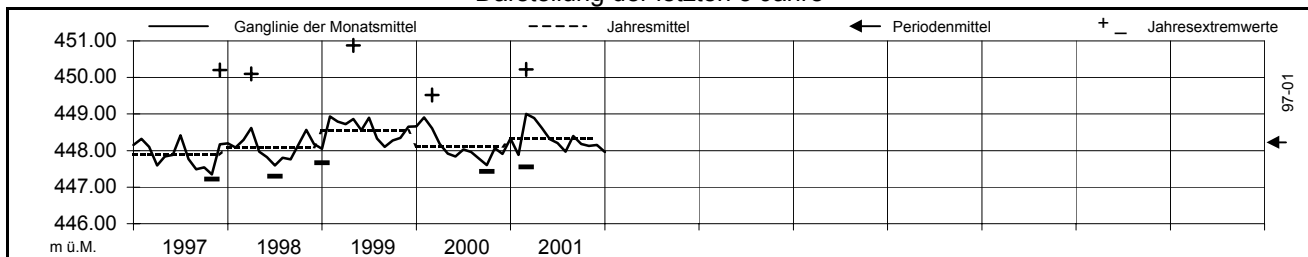
Grundwasserstände	84. K. 1	Diegten	Hofmatt	Jahr 2001
Koordinaten:	628 138.86 / 252 415.62	OK-Terrain:	451.63 m ü.M.	Abstichpunkt: 452.49 m ü.M.

2001	Januar	Februar	März	April	Mai	Juni	Juli	August	September	Oktober	November	Dezember	
1	447.60 -	448.10 +	447.65	448.58	448.74	448.12	448.20	447.82	447.85 -	448.35	448.19	448.83 +	1
2	448.21 -	448.08	447.66 -	448.55	448.68	448.11	448.13	447.81	447.92	448.28	448.17	448.67	2
3	448.50	448.05	447.81	448.50	448.61	448.15	448.08	447.80	447.92	448.21	448.17	448.60	3
4	448.49	448.03	449.68	448.47	448.55	448.23	448.03	447.94	447.88	448.26	448.17	448.52	4
Tagesmittel	448.45	448.05	449.92 +	448.46	448.54	448.24	447.99	448.05	447.91	448.28	448.14	448.47	5
6	449.10	448.03	449.46	448.43	448.95	448.20	447.95	447.99	447.92	448.26	448.11	448.42	6
7	449.85 +	448.04	449.24	448.43 -	448.85	448.18	448.03	447.93	447.94	448.29	448.09	448.33	7
8	449.58	448.02	449.04	448.43 -	448.80	448.15	448.14	448.04	447.98	448.31	448.14	448.30	8
9	449.18	447.98	449.06	448.44 -	448.76	448.44	448.07	448.19	448.32	448.35 +	448.34	448.26	9
interpol. x	448.91	447.95	448.92	449.30	448.71	448.83 +	448.02	448.26 +	448.29	448.33	448.30	448.23	10
11	448.62	447.92	448.82	449.30	448.65	448.85	447.93	448.24	448.18	448.24	448.28	448.18	11
12	448.45	447.92	449.21	449.16	448.60	448.76	447.90	448.19	448.12	448.25	448.25	448.13	12
13	448.31	447.90	449.62	449.04	448.54	448.68	447.95	448.13	448.06	448.22	448.20	448.06	13
14	448.22	447.89	449.65	448.95	448.47	448.59	447.99	448.08	448.22	448.20	448.19	448.01	14
Max. +	448.12	447.89	449.38	448.90	448.45	448.50	448.71	448.03	448.29	448.15	448.17	447.97	15
16	448.05	447.87	449.21	449.43 +	448.45	448.45	449.57 +	447.98	448.31	448.11	448.13	447.97	16
17	448.00	447.86	449.06	449.50	448.61	448.41	449.00	447.95	449.11 +	448.08	448.09	447.96	17
18	447.96	447.82	449.03	449.33	449.25 +	448.34	448.78	447.93	449.03	448.04	448.10	447.97	18
19	447.91	447.79	448.98	449.15	449.09	448.31	448.61	447.92	448.74	447.99	448.08	447.94	19
Min. -	447.96	447.78	449.03	449.01	448.95	448.28	448.46	447.99	448.77	447.98	448.05	447.91	20
21	447.93	447.76	449.68	448.91	448.84	448.23	448.38	448.03	448.82	447.97	448.01	447.86	21
22	447.93	447.76	449.32	448.91	448.76	448.17	448.28	448.01	448.71	447.96	448.00	447.85	22
23	447.92	447.74	449.14	448.92	448.66	448.12	448.20	447.97	448.75	447.94	447.98	447.80	23
24	447.96	447.73	449.01	448.91	448.57	448.07	448.15	447.93	449.16	447.98 -	447.97	447.77	24
25	448.07	447.71	448.93	449.01	448.50	448.02	448.11	447.89	448.91	448.27	447.94 -	447.77 -	25
26	448.13	447.67	448.86	449.03	448.42	447.96	448.06	447.86	448.77	448.34	447.97	447.81	26
27	448.15	447.66 -	448.82	449.06	448.35	447.94 -	448.03	447.84	448.68	448.28	447.94	447.79	27
28	448.16	447.67 -	448.78	448.97	448.28	448.35	447.99	447.82	448.55	448.22	447.97	447.83	28
29	448.13		448.72	448.89	448.23	448.32	447.95	447.80	448.46	448.19	448.03	448.18	29
30	448.12		448.70	448.82	448.16	448.27	447.91	447.78 -	448.41	448.14	448.57 +	448.73	30
31	448.12		448.61		448.14 -		447.87 -	447.79 -		448.12		448.53	31
Monatsmittel	448.33	447.88 -	449.00 +	448.89	448.62	448.31	448.21	447.97	448.40	448.18	448.13	448.15	
Maximum	449.96	448.26 -	450.22 +	449.77	449.54	449.07	449.73	448.44	449.67	448.51	448.96	448.99	
Datum	7.1.	1.2.	5.3.	16.4.	18.5.	10.6.	16.7.	10.8.	17.9.	9.10.	30.11.	1.12.	
Amplitude *	2.37	0.69 -	2.67 +	1.49	1.48	1.23	1.93	0.76	1.96	0.70	1.15	1.33	
Jahr 2001	Mittel	448.34	m ü.M.	Maximum	450.22	(5.März 2001)	Minimum	447.55	(2. März 2001)	Amplitude*	2.67	m	



Periode		1997 - 2001											
Monatsmittel		448.28	448.42	448.56 +	448.40	448.24	448.08	448.23	447.97	447.91 -	447.95	448.09	448.21
Maximum	Jahr	2001	1999	2001	1998	1999	1999	1999	1999	2001	1998	1998	1997
Minimum	Jahr	2001	97/2001	2001	1997	1997	1997	1997	1997	1997	1997	1997	1997
Amplitude *	Jahr	2001	1997	2001	1998	1999	1997	1999	1997	2001	1998	1998	1997
Periode	Mittel	448.20	m ü.M.	Maximum	450.88	(13.Mai 1999)	Minimum	447.22	(15. Nov. 1997)	Amplitude*	3.66	m	

Darstellung der letzten 5 Jahre

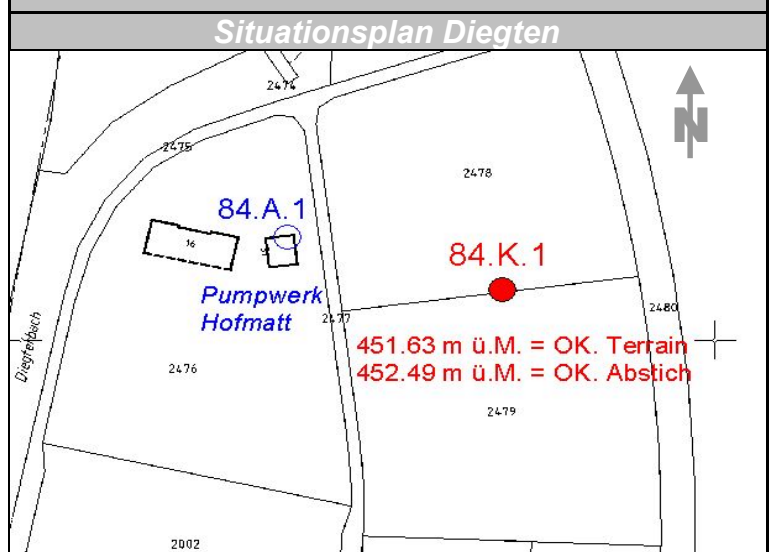
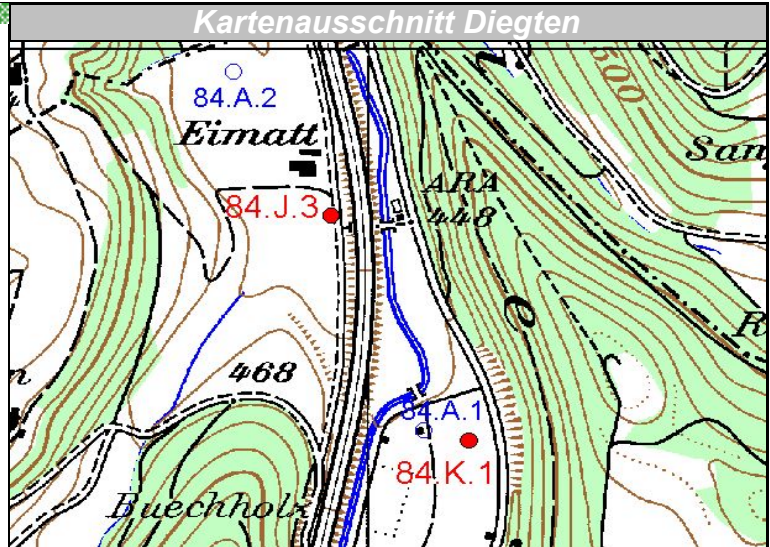
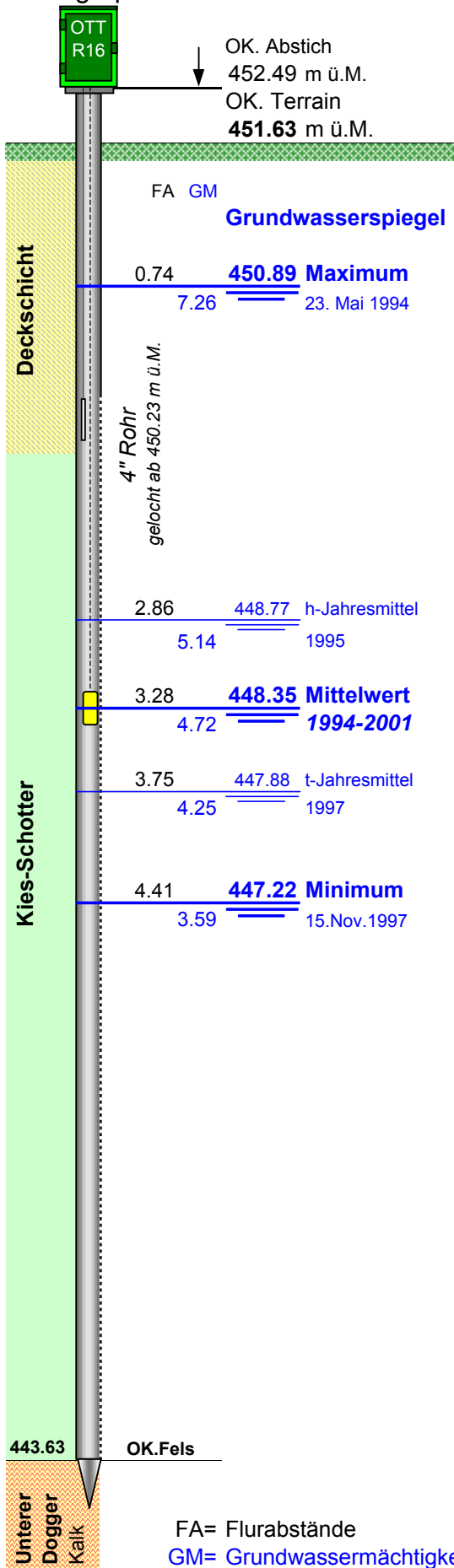


* Die Amplituden sind aufgrund von Extremwerten berechnet

Grundwasserspiegel im Diegtertal

Station 84.K.1 Diegten
Limnigraph

Hofmatt
Koordinaten: 628'138.86 / 252'415.62



FA= Flurabstände
GM= Grundwassermächtigkeit in m